

MEMOIRS OF THE
SOCIETY FOR AMERICAN ARCHAEOLOGY

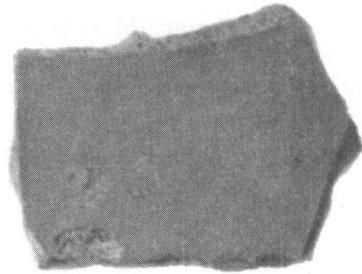
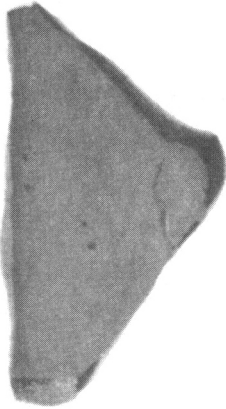
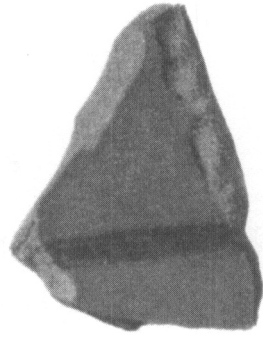
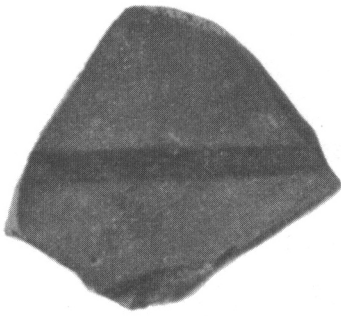
Number Twelve

RICHARD B. WOODBURY, *Editor*

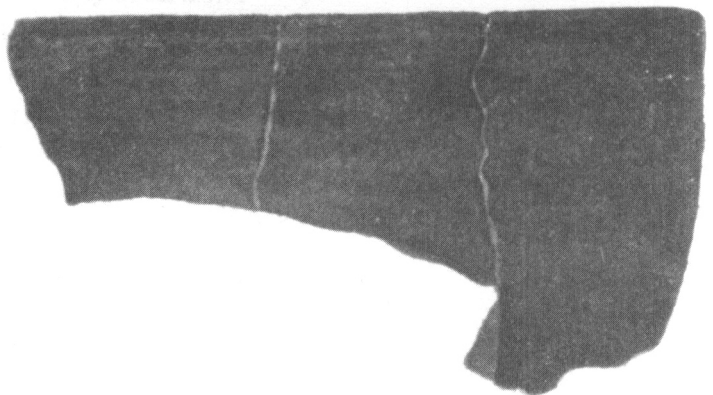
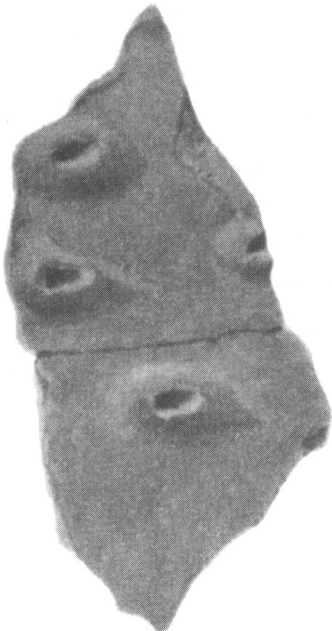
Supplement to

AMERICAN ANTIQUITY, Volume XXII,

Number 2, Part 3, October 1956



Sherds from mainland South America found in the Galápagos Islands. *Upper and middle*, Tiahuanacoid polychrome sherds (Cat. No. 50) from James Bay, Component K; *lower left*, San Nicolas Molded sherd (Cat. No. 46) from James Bay, Component J; *lower right*, Tomaval Plain sherd (Cat. No. 79) from Buccaneer Bay.



AMERICAN ANTIQUITY, Volume XXII, Number 2, Part 3, October, 1956

ARCHAEOLOGICAL EVIDENCE
OF PRE-SPANISH VISITS
TO THE GALÁPAGOS ISLANDS

BY
THOR HEYERDAHL
AND
ARNE SKJÖLSVOLD

Memoirs of the
Society for American Archaeology
Number 12 : 1956

PUBLISHED BY
THE SOCIETY FOR AMERICAN ARCHAEOLOGY

SALT LAKE CITY, UTAH, U.S.A.

KRAUS REPRINT CO.
Millwood, New York
1974

ACKNOWLEDGMENT

PUBLICATION OF THIS MEMOIR WAS MADE POSSIBLE BY A GENEROUS CONTRIBUTION FROM RAND McNALLY AND COMPANY, CHICAGO.

The illustrations are the work of Magne Galåen. For all rim profiles the vessels' interior are to the left.

Chapters 1, 2, and 3 are by Thor Heyerdahl. Arne Skölsvold is the author of chapter 4. Chapters 5, 6, 7, and 8 were written by the 2 authors jointly, and chapters 9 and 10 are by the senior author.

*Reprinted with the permission of
The Society for American Archaeology*

KRAUS REPRINT CO.

A U.S. Division of Kraus-Thomson Organization Limited

Printed in U.S.A.

TABLE OF CONTENTS

	Page
1. Geography	1
2. History	3
3. Objectives of the Norwegian Archaeological Expedition to the Galápagos.....	9
4. Archaeological Sites in the Galápagos Group.....	13
James Bay, Santiago Island.....	13
Buccaneer Bay, Santiago Island.....	19
Whale Bay, Santa Cruz Island.....	20
Black Beach, Floreana Island.....	21
5. Identification of Artifacts.....	22
James Bay, Santiago Island.....	22
Buccaneer Bay, Santiago Island.....	40
Whale Bay, Santa Cruz Island.....	41
Black Beach, Floreana Island.....	46
6. Additional Archaeological Evidence from the Galápagos.....	49
7. Summary	52
8. Conclusions	56
9. Discussion	59
10. Recapitulation	62
Appendix. Catalog of the Collection.....	63
References Cited	70

LIST OF ILLUSTRATIONS

Frontispiece. Sherds from mainland South America found in the Galápagos Islands	ii
FIG. 1. The Galápagos Islands and the coast of Ecuador, showing possible sailing routes.....	2
FIG. 2. Location of sites and settlements in the Galápagos Islands.....	4
FIG. 3. Components at the James Bay site, Santiago Island.....	14
FIG. 4. Sherds of glossy red-slipped unidentified type, James Bay, Component A.....	23
FIG. 5. Flint scraper, James Bay, Component A.....	24
FIG. 6. Sherds of San Juan Molded and of Queneto Polished Plain, James Bay, Component B.....	25
FIG. 7. Flint objects from James Bay, Component B.....	26
FIG. 8. Sherds of Tomaval Plain, James Bay, Component C.....	26
FIG. 9. Profiles of sherds, James Bay, Components D and E.....	27
FIG. 10. Sherd of possible Ecuadorian origin, James Bay, Component E.....	27
FIG. 11. Perforated disc of chalky stone, James Bay, Component F.....	27
FIG. 12. Jar neck of Castillo Plain, James Bay, Component G.....	28
FIG. 13. Sherds of Castillo Plain, James Bay, Component G.....	29
FIG. 14. Profiles of Castillo Plain and Tomaval Plain sherds, James Bay, Component G.....	30
FIG. 15. Sherd resembling Tomaval Plain, James Bay, Component G.....	30

	Page
FIG. 16. Profiles of sherds, probably Coastal Ecuadorian, James Bay, Components G and H.....	30
FIG. 17. Tomaval Plain sherd, James Bay, Component G.....	31
FIG. 18. Sherds of Queneto Polished Plain, James Bay, Component G.....	31
FIG. 19. Coast Ecuadorian sherd, James Bay, Component H.....	32
FIG. 20. Castillo Plain rims and handle lug, James Bay, Component I.....	33
FIG. 21. Profiles of Castillo Plain rims, James Bay, Component I.....	34
FIG. 22. San Nicolas Molded sherd, James Bay, Component J.....	34
FIG. 23. San Nicolas Molded sherd, compared with Peruvian vessel.....	35
FIG. 24. Red ware sherds of unidentified type, James Bay, Component J.....	36
FIG. 25. Tiahuanacoid polychrome sherds, James Bay, Component K.....	36
FIG. 26. Sherds of Queneto Polished Plain, James Bay, Component K.....	37
FIG. 27. Obsidian scraper, James Bay, Component K.....	38
FIG. 28. Profiles of Castillo Plain rims, James Bay, Component K.....	38
FIG. 29. Sherds of Castillo Plain, James Bay, Component K.....	38
FIG. 30. Sherds of unidentified glossy red-slipped ware, James Bay, Locality L.....	39
FIG. 31. Handle of unidentified glossy red-slipped ware, James Bay, Locality L.....	39
FIG. 32. Sherds of La Plata Molded, James Bay, Locality L.....	40
FIG. 33. Frog and other animal appliqués on La Plata Molded sherds, James Bay, Locality L.....	41
FIG. 34. La Plata Molded vessels from Peru with frog appliqués.....	42
FIG. 35. Coast Ecuadorian sherds, Buccaneer Bay.....	43
FIG. 36. Profiles of Coast Ecuadorian sherds, Buccaneer Bay.....	44
FIG. 37. Bowl Fragments of Tomaval Plain, Buccaneer Bay.....	44
FIG. 38. Profiles of Tomaval Plain sherds, Buccaneer Bay and Black Beach.....	45
FIG. 39. Rim profiles of sherds from Whale Bay, possibly Ecuadorian.....	45
FIG. 40. Rim profiles of sherds of unidentified type, Whale Bay.....	45
FIG. 41. Two flint chips from Whale Bay.....	45
FIG. 42. Rim profiles, probably Tomaval Plain, Black Beach.....	46
FIG. 43. Fragmentary pottery whistle, Black Beach.....	46
FIG. 44. Mochica whistle from Chicama Valley, Peru.....	46
FIG. 45. Tomaval Plain sherd, Cado Colorado.....	48
FIG. 46. Profile of sherd shown in Fig. 45.....	49
FIG. 47. Tomaval Plain sherd, Cado Colorado.....	50
FIG. 48. Profiles of 2 rim sherds of Tomaval Plain, Cabo Colorado.....	51

LIST OF TABLES

1. Summary of pottery types found at Galápagos sites.....	53
2. Probable chronological position of the Galápagos sites in terms of North Coast Peruvian cultural periods.....	54