

MagnaFire

No other camera even comes close

Superior light sensitivity

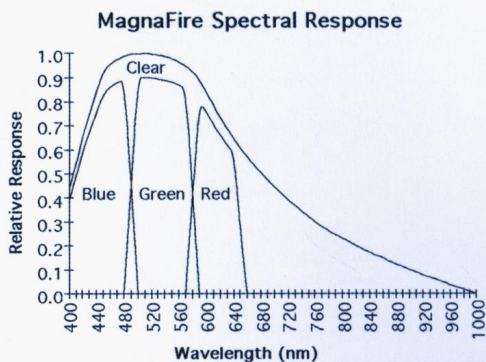
Unmatched ease-of-use

Unparalleled speed

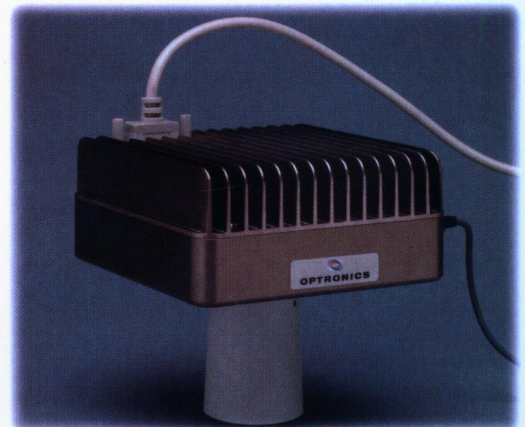
Outstanding resolution

Specifications

Sensor	Large format interline transfer CCD
Active pixels	1280 H x 1024 V
Image area	8.6 mm x 6.9 mm, megapixel CCD
Pixel dimensions	6.7 μm x 6.7 μm
Aspect ratio	3:2
CCD cooling	Thermoelectric (Peltier), 40°C below ambient temperature
Exposure control	Electronic shutter (no mechanical shutter)
Exposure time	100 microseconds to 20 minutes
Dynamic range	10 bits (30-bit multipass color)
Filter wheel	6 positions: IR cut, red, green, blue, clear (passes IR), black
Image readout rate	16.9 million pixels/sec
Frame rate	10 fps, full field, full resolution
Computer interface	IEEE-1394 (*Firewire™), 400 megabits/sec
Optical interface	C-mount with standard C-mount backfocus (17.5 mm)
Power requirements	Universal power input: 90 - 260 VAC, 50/60 Hz



*Firewire is a registered trademark of Apple Computer

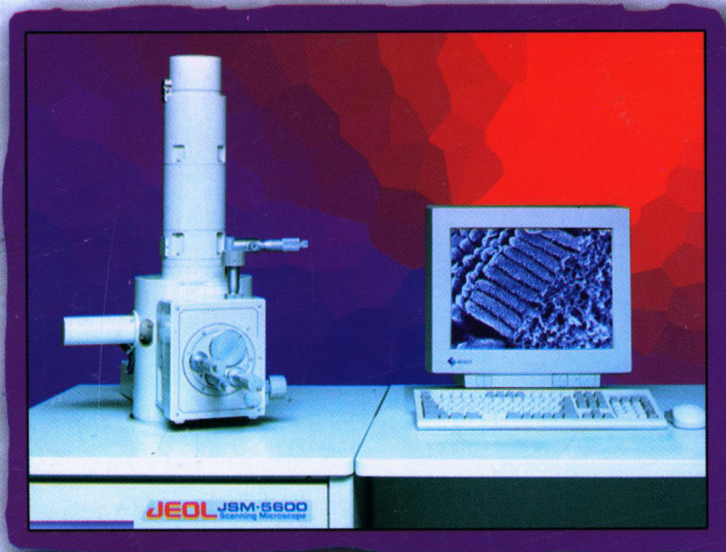


OPTRONICS

Picture This™

(800) 796-8909 www.optronics.com

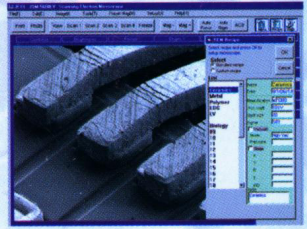
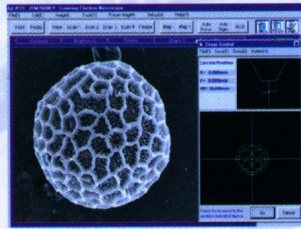
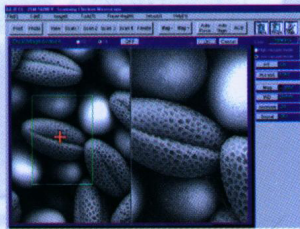
As Easy As It Looks



PC SEM

JSM-5600 & JSM-5600LV

Multi-Purpose and Low Vacuum Scanning Electron Microscope



All screens are clear and simple allowing easy system management and image optimization.

- ▶ **Based on a Simple PC Interface.**
- ▶ **Intuitive Operation with a Mouse Alone.**
- ▶ **No Nonsense Transition Between Conventional and Low Vacuum Modes.**
- ▶ **Built-in DTP System Allows Quick and Easy Report Generation and Printing.**
- ▶ **A Special High Sensitivity Detector Allows High Image Quality In All Modes.**

The new JSM-5600 and JSM-5600LV Scanning Electron Microscope was designed from the ground up as a PC SEM. This means that it can be controlled completely and efficiently from only the keyboard

and mouse. Keeping in mind the wide variety of preferences for controlling various aspects of an SEM we have also included an optional knobset for multitasking and fine control. You choose.

If you are currently in the market for a high end conventional or low vacuum SEM and need to combine state-of-the-art electronics with the versatility of computer control, we would like to invite you to come to our Applications Facility so that we can prove to you that it really is "As Easy As It Looks".

JEOL USA, Inc., 11 Dearborn Road, Peabody, MA 01960
Tel: 978/535-5900 • Fax: 978/536-2205
Email: eod@jeol.com • WEB: <http://www.jeol.com>

JEOL