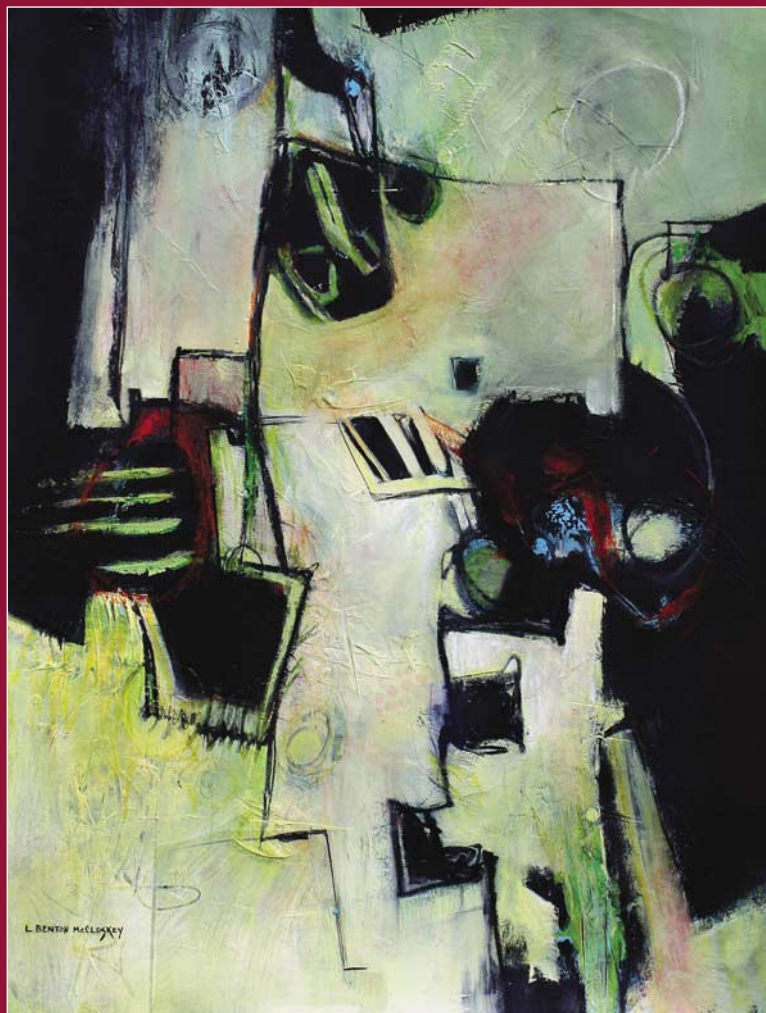


PREHOSPITAL and DISASTER MEDICINE

Volume 27, Number 3

June 2012



WADDEM

CAMBRIDGE
UNIVERSITY PRESS

The Official Journal of the
World Association for Disaster and Emergency Medicine



WADEM

WORLD ASSOCIATION FOR DISASTER AND EMERGENCY MEDICINE

SAVE THE DATE

The 4th Pan American Conference

The National Conference Center
Leesburg, Virginia, USA
October 15 - 17, 2012
www.wadem.org

Measuring Progress and Improving Preparedness in Disaster Management



Topics will include:

Consensus-building Workshops

- Disaster Terminology
- Foreign Medical Teams
- Accountability
- Assessments and Measurements

Discussions and Papers

- Uses of Social Media
- New Technology
- Safe Medical Facilities
- Forensics
- Psychosocial issues
- Roles of emergency, military, nursing, and medicine in disaster health

This conference will bring together individuals interested in disaster and emergency medicine/management to discuss developments in risk reduction, preparedness, and responses, and to build consensus on important related issues.

The conference will focus on risk reduction, improving preparedness, and assessing responses worldwide from prehospital care systems through post-event evaluations. There will be consensus-building workshops, debates, keynote addresses, as well as invited and free papers. Additionally, there will be several relevant pre- and post-conference workshops and courses.

Call for Papers

Only 50 papers related to the above topics will be accepted.

Abstract submission opens: March 1, 2012

Deadline for submission of abstracts: May 31, 2012



CONFERENCE
SECRETARIAT

International Conference Services Ltd.

2101-1177 West Hastings Street, Vancouver, BC, Canada V6E 2K3

P +1 (604) 681 2153 F +1 (604) 681 1049 E wadem@icsevents.com W www.wadem.org

Table of Contents

Editorial

- The Utstein-Style Template for Uniform Data Reporting of Acute Medical Response in Disasters** 219
Samuel J. Stratton, MD, MPH

Original Research

- Basic-Level Emergency Medical Technician Administration of Fluids and Glucose via Enzyme-Assisted Subcutaneous Infusion Access** 220
Olanrewaju A. Soremekun, MD; Melissa L. Shear, BS; Jay Connolly; Charles E. Stewart, MD, EMDM; Stephen H. Thomas, MD, MPH
- Predictors of Ambulance Transport in Patients with ST-Elevation Myocardial Infarction** 226
Tara M. Scherer, MD; Stephan Russ, MD, MPH; Cathy A. Jenkins, MS; Ian D. Jones, MD; Corey M. Slovis, MD; Brittany L. Cunningham, MSN; Tyler W. Barrett, MD, MSCI
- Red Blood Cell Transfusion: Experience in a Rural Aeromedical Transport Service** 231
George L. Higgins III, MD; Michael R. Baumann, MD; Kevin M. Kendall, MD; Michael A. Watts, MD; Tania D. Strout, PhD, RN, MS
- Evaluation of a Brief Training on Mental Health and Psychosocial Support in Emergencies: A Pre- and Post-assessment in Nepal.** 235
Mark J.D. Jordans, PhD; Nagendra P. Luitel, MA; Bhava Poudyal, MA; Wietse A. Tol, PhD; Ivan H. Komproe, PhD
- Simulation Training with Structured Debriefing Improves Residents' Pediatric Disaster Triage Performance** . . . 239
Mark X. Cicero, MD; Marc A. Auerbach, MD, MSci; Jason Zigmont, PhD; Antonio Riera, MD; Kevin Ching, MD; Carl R. Baum, MD
- High School Allied Health Students and Their Exposure to the Profession of EMS.** 245
Joshua B. Holloman, MHS; Michael W. Hubble, PhD
- The Accuracy of Emergency Medical Dispatcher-Assisted Layperson-Caller Pulse Check Using the Medical Priority Dispatch System Protocol** 252
Greg Scott, MBA; Jeff Clawson, MD; Mark Rector; Dave Massengale; Mike Thompson; Brett Patterson; Christopher H.O. Olola, PhD

Special Reports

- Identification of Current Priorities for Research in Humanitarian Action: Proceedings of the First Annual UN OCHA Policy and Research Conference** 260
Mark P. Foran, MD, MPH; Paul G. Greenough, MD, MPH; Andrew Thorw, PhD; Daniel Gilman, MA; Andreas Schütz, MRes; Rahul Chandran, MA; Allegra Baiocchi, MA
- The Development and Implementation of a Hospital Emergency Response Team (HERT) for Out-of-Hospital Surgical Care.** 267
Christopher Scott, MD; Brant Putnam, MD; Scott Bricker, MD; Laura Schneider, RN; Stephanie Raby, RN; William Koenig, MD; Marianne Gausche-Hill, MD
- Issues in the Assessment of Children's Coping in the Context of Mass Trauma** 272
Betty Pfefferbaum, MD, JD; Mary A. Noffsinger, PhD; Leslie H. Wind, PhD

Requirements for Independent Community-Based Quality Assessment and Accountability Practices in Humanitarian Assistance and Disaster Relief Activities.	280
<i>Thomas D. Kirsch, MD, MPH; Paul Perrin, MPH; Frederick M. Burkle, Jr., MD, MPH, DTM; William Canny; Susan Purdin; William Lin, PhD; Lauren Sauer, MS</i>	
Conference Reports	
Reports and Session Summaries of the 17th World Congress on Disaster and Emergency Medicine.	286
Brief Report	
A Human Factors Analysis of an EMS Crew's Exposure to Carbon Monoxide.	297
<i>Matthew J. Levy, DO, MSc; Kevin G. Seaman, MD; J. Lee Levy, MD, MSc</i>	
Case Report	
EMS Response to an Airliner Crash.	299
<i>Shwra Dasgupta, MBBS, MPH; Simone French, DM; Jean Williams-Johnson, DM; Rhonda Hutson, DM; Nicole Hart, DM; Mark Wong, DM; Eric Williams, DM; Kurdell Espinosa, DM; Celeste Maycock, DM; Romayne Edwards, DM; Trevor McCartney, FRCS (Ed); Shamir Cawich, DM; Ivor Crandon, FRCS</i>	
Letter to the Editor	
Rapidly-Deployed Small Tent Hospitals: Lessons from the Earthquake in Haiti	303
<i>Yitzhak Rosen, MD; Pablo Gurman, MD; Emmanuel Verna, MD; Noel Elman, PhD; Efraim Laor, PhD</i>	

Editorial Office
World Association for Disaster and Emergency
Medicine (WADEM), Madison,
Wisconsin USA

Editor-in-Chief
Samuel J. Stratton, MD, MPH

Development Editor
Mona Johnson

Editorial Assistant
Jackson Helmer

Publisher
Cambridge University Press
32 Avenue of the Americas
New York, NY 10013-2473 USA

Prehospital and Disaster Medicine (ISSN 1049-023X) is published bimonthly in the months of February, April, June, August, October, December, by Cambridge University Press for the World Association for Disaster and Emergency Medicine. Prehospital and Disaster Medicine incorporates the Journal of the World Association for Emergency and Disaster Medicine and the Journal of Prehospital Medicine.

Editorial Information: All manuscripts must be submitted through the Journal's online submission platform, ScholarOne Manuscripts: <http://mc.manuscriptcentral.com/pdm>.

2012 Subscription Information: Institutions print and electronic: US\$516.00 in the USA, Canada, and Mexico; UK£313.00+VAT elsewhere. Institutions electronic only: US\$375.00 in the USA, Canada, and Mexico; UK£227.00+VAT elsewhere. Individuals print and electronic: US\$153.00 in the USA, Canada, and Mexico; UK£93.00+VAT elsewhere. Individuals electronic only: US\$113.00 in the USA, Canada, and Mexico; UK£68.00+VAT elsewhere. Single Part: US\$94.00 in the USA, Canada, and Mexico; UK£57.00+VAT elsewhere. Prices include postage and insurance. Airmail or registered mail is extra. Back volume prices are available upon request. Claims of non-receipt or damaged issues must be filed within three months of cover date.

Comprehensively indexed by the National Library of Medicine (MEDLINE), Cumulative Index to Nursing and Allied Health (CINAHL) and Health Star Cumulative Index. The database is available online via BRS, Data-Star, and DIA-LOG, and on CD-ROM through CD Plus, Compact Cambridge and Silver Platter. Abstracts and search capability available on the Internet at <http://pdm.medicine.wisc.edu>.

Copyright © 2012 by the World Association for Disaster and Emergency Medicine.

Cover Artwork

Common Ground (acrylic on paper), by Linda Benton McCloskey

Artist Statement

One of my favorite quotes completely describes me: "I paint because not to paint is unthinkable. Painting completes me and truly is my life's passion."

My art is definitely influenced by the impulsive approach of the abstract expressionists de Kooning, Motherwell, Kline and Hofmann. Discovering creative ways of expression and keeping traditional rules of painting out of the picture are top priorities. Since I love to vary my palette of colors and take new approaches, my most recent works are experimental water media (abstract), watercolor, mixed media, and encaustic with lots of texture and exciting color. Since I begin a new work without a preconceived outcome, I simply begin painting and then intuition, love, desire, and experience take over. When I am in this state of mind, I give way to the process. Eventually, I begin to see images and shapes, and then develop them further. No matter what the result, the painting takes me to a new destination.

I am a member of various local, state, and national art associations and a teacher of experimental water media, abstract design, and encaustic painting. I have exhibited in numerous national and international juried shows, universities, cultural centers, galleries, museums, and in the rotunda of the Pennsylvania State Capitol. I've won numerous national and international awards and have earned signature memberships in the Pennsylvania Watercolor Society, Baltimore Watercolor Society, and am a Nautilus Fellow of the International Society of Experimental Artists. Most of my works are in private collections and universities.

For more information, please go to <http://lindabentonmccloskey.com>.

EDITOR-IN-CHIEF**Samuel Stratton, MD, MPH**

University of California-Los Angeles
Los Angeles, California, USA

EMERITUS EDITOR-IN-CHIEF**Marvin L. Birnbaum, MD, PhD**

University of Wisconsin-Madison
Madison, Wisconsin, USA

DEPUTY EDITORS**David A. Bradt, MD, MPH**

Royal Melbourne Hospital
Melbourne, Australia

Geert Seynaeve, MD

Brussels, Belgium

Darren Walter

University Hospital of South Manchester
Manchester, UK

ASSOCIATE EDITORS**Wolfgang F. Dick, MD, PhD**

Mainz, Germany

Kimball Maull, MD, FACS

Department of Surgery
Hamad General Hospital
Doha, Qatar

Steven Rottman, MD

University of California-Los Angeles
Los Angeles, California, USA

SECTION EDITOR*Humanitarian Affairs***Frederick M. Burkle, MD, MPH, DTM**

Senior Fellow and Scientist,
Harvard Humanitarian Initiative
Harvard University
Cambridge, Massachusetts, USA

Senior Public Policy Scholar
Woodrow Wilson International
Center for Scholars

EDITORIAL BOARD**Carol Amaratunga, PhD**

Adjunct Professor
School of Child and Youth
Development
University of Victoria Research
Associate of the Justice
Institute of British Columbia
Canada

Paul Arbon, PhD

School of Nursing and
Midwifery
Flinders University
Adelaide, South Australia

Frank Archer, MD

Monash University
Melbourne, Australia

Jeffery Arnold, MD

Department of Emergency
Medicine
Santa Clara Valley Medical
Center
San Jose, California, USA

Yaron Bar-Dayan, MD, MHA

Israeli Defense Forces Home
Front Command
Or-Yehuda, Israel

Joost Bierens, MD, PhD

Amsterdam, The Netherlands

Tareg Bey, MD

Department of Emergency
Medicine
University of California-Irvine,
Irvine, California, USA

Richard A. Bissell, PhD

University of
Maryland-Baltimore
Baltimore, Maryland, USA

Felipe Cruz-Vega, MD

Office of Social Security
Mexico City, Mexico

Robert A. De Lorenzo, MD, MSM, FACEP

Medical Corps
United States Army
San Antonio, Texas, USA

Claude de Ville de Goyet, MD

Brussels, Belgium

Judith Fisher, MD

Consultant
Washington, DC, USA

Erik S. Gault

George Washington University
Washington, DC, USA

Michael Gunderson

President
Integral Performance Solutions
Lakeland, Florida, USA

Keith Hotlermann, MD

George Washington University
Washington, DC, USA

Mark Johnson, MPA

Retired Chief of EMS
Juneau, Alaska, USA

Mark Keim, MD

Center for Disease Control
and Prevention
Atlanta, Georgia, USA

Todd J. LeDuc, EMT-P

Deputy Fire Chief
Broward Sheriff Fire Rescue
Ft. Lauderdale, Florida,
USA

Gloria Leon, PhD

Professor of Psychology
University of Minnesota
Minneapolis, Minnesota,
USA

Graeme McColl

Emergency Management Team
National Health Board
Ministry of Health
Christchurch, New Zealand

Andrew Milsten, MD, MS, FACEP

University of Massachusetts
Emergency Medicine
Baltimore, Maryland, USA

Jerry Overton

President/CEO
Chairman
IAED Emergency Clinical
Advice System & Standards
Board
Salt Lake City, Utah, USA

Paul Paris, MD

Center for Emergency Medicine
University of Pittsburgh
Pittsburgh, Pennsylvania, USA

Lynda Redwood-Campbell, MD, MPH

Department of Family
Medicine
McMaster University,
Hamilton, Ontario, Canada

Edward Ricci, PhD

University of Pittsburgh
Pittsburgh, Pennsylvania, USA

Leonid Roshal, MD

Institute of Pediatrics
Academy of Medical Sciences
Moscow, Russia

Don Schramm

University of Wisconsin-Madison
Madison, Wisconsin, USA

Knut Ole Sundnes, MD

Baerum Hospital
Oslo, Norway

Takashi Ukai, MD

Hyogo Emergency Medical
Center
Hyogo, Japan

Michael Van Rooyen, MD

Associate Professor, Harvard
Medical School, Brigham and
Women's Hospital
Boston, Massachusetts, USA

Aims and Scope: The mission of *Prehospital and Disaster Medicine* (PDM) is the distribution of information relevant to the practice of out-of-hospital and in-hospital emergency medical care, disaster health, and public health and safety. PDM provides an international forum for the reporting and discussion of scientific studies, both quantitative and qualitative, that have relevance to the above practices. The major objectives are: (1) the improvement of the types and quality of the care delivered to patients with perceived medical emergencies and to victims of multi-casualty accidents or disasters, including the public health and safety aspects of such events; and (2) the prevention and/or mitigation of the occurrence of such events and of the effects of these events upon the human population and environment.

Editorial Office: Prehospital and Disaster Medicine, 3330 University Avenue, Suite 130, Madison, Wisconsin 53705, USA. Telephone: (+1) (608) 819-6604; Facsimile (+1) (608) 819-6055; E-mail: pdm@wadem.org

Publishing, Production, and Advertising Office: Cambridge University Press, 32 Avenue of the Americas, New York, NY 10013-2473, United States.

Subscription Offices: (for USA, Canada, and Mexico) Cambridge University Press, 32 Avenue of the Americas, New York, NY 10013-2473, United States; (for UK and elsewhere) Cambridge University Press, The Edinburgh Building, Shaftesbury Road, Cambridge CB2 8RU, UK.

2012 Subscription Information: *Prehospital and Disaster Medicine* (Print ISSN 1049-023X; Electronic ISSN 1945-1938) is published bimonthly in the months of February, April, June, August, October, and December by Cambridge University Press, 32 Avenue of the Americas, New York, NY 10013-2473, United States/Cambridge University Press, The Edinburgh Building, Shaftesbury Road, Cambridge CB2 8RU, UK for the World Association for Disaster and Emergency Medicine. 2012 Annual subscription rates: Institutions print and electronic: US\$516.00 in the USA, Canada, and Mexico; UK£313.00+VAT elsewhere. Institutions electronic only: US\$375.00 in the USA, Canada, and Mexico; UK£227.00+VAT elsewhere. Individuals print and electronic: US\$153.00 in the USA, Canada, and Mexico; UK£93.00+VAT elsewhere. Individuals electronic only: US\$113.00 in the USA, Canada, and Mexico; UK£68.50+VAT elsewhere. Single Part: US\$94.00 in the USA, Canada, and Mexico; UK£57.00+VAT elsewhere. Prices include postage and insurance. Airmail or registered mail is extra. Back volume prices are available upon request.

Submissions: All manuscripts must be submitted through the Journal's online submission platform, ScholarOne Manuscripts, at <http://mc.manuscriptcentral.com/pdm>. Please review the Author Instructions and Author Checklist available online before finalizing a submission.

Indexing: National Library of Medicine (MEDLINE), Cumulative Index to Nursing and Allied Health (CINAHL), and Health Star Cumulative Index.

© World Association for Disaster and Emergency Medicine 2012. All rights reserved. No part of this publication may be reproduced, in any form or by any means, electronic, photocopying, or otherwise, without permission in writing from Cambridge University Press. Policies, request forms, and contacts are available at: <http://www.cambridge.org/rights/permissions/permission.htm>. Permission to copy (for users in the United States) is available from Copyright Clearance Center Transactional Reporting Service, 222 Rosewood Drive, Danvers, MA 01923, USA. <http://www.copyright.com>, email: info@copyright.com.

Printed in United States of America on acid-free paper.

Postmaster: Send address changes in the USA and Canada to *Prehospital and Disaster Medicine*, Subscription Department, Cambridge University Press, 100 Brook Hill Drive, West Nyack, NY 10994-2133, USA.

Periodical postage rate paid at New York, NY and additional mailing offices.

CAMBRIDGE

JOURNALS

Go Mobile

CJO Mobile (CJOm) is a streamlined
Cambridge Journals Online (CJO)
for smartphones and other
small mobile devices



- Use CJOm to access all journal content including *FirstView* articles which are published online ahead of print
- Access quickly and easily thanks to simplified design and low resolution images
- Register for content alerts or save searches and articles – they will be available on both CJO and CJOm
- Your device will be detected and automatically directed to CJOm via: journals.cambridge.org



CAMBRIDGE
UNIVERSITY PRESS