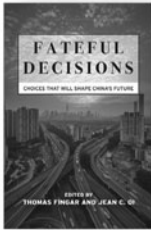




# STANFORD UNIVERSITY PRESS



**Fateful Decisions**  
*Choices That Will Shape China's Future*  
Edited by  
Thomas Fingar and  
Jean C. Oi  
STUDIES OF THE WALTER  
H. SHORENSTEIN  
ASIA-PACIFIC  
RESEARCH CENTER



**The Inconvenient  
Generation**  
*Migrant Youth  
Coming of Age on  
Shanghai's Edge*  
Minhua Ling



**Corporate Conquests**  
*Business, the State,  
and the Origins of  
Ethnic Inequality in  
Southwest China*  
C. Patterson Giersch



**Land Wars**  
*The Story of China's  
Agrarian Revolution*  
Brian DeMare



sup.org

stanfordpress.typepad.com



## TANG CENTER FOR EARLY CHINA

唐氏早期中國研究中心

COLUMBIA UNIVERSITY

The Tang Center for Early China at Columbia University was founded in 2015 through a generous endowment gift from Oscar Tang and Agnes Hsu-Tang. The Tang Center is dedicated to the advancement of the understanding of the richness and importance of early Chinese civilization as a part of a broader common human heritage. It is committed to doing so through both solid scholarship and broad public outreach. The Tang Center sponsors a variety of conferences, workshops as well as public lectures each year including the Columbia Early China Seminar. The Tang Center is especially interested in supporting research initiatives that aim to examine newly discovered paleographic and textual material as well as artifacts, and in promoting the role of archaeology as a path to understand the past.

### Call for Applications

#### The Tang Post-Doctoral Research Award in Early China Studies

The Tang Center for Early China offers one Post-Doctoral Research Award in the amount of \$15,000 each year in recognition of outstanding research projects in early Chinese civilization or in archaeology.

#### The Tang Visiting Scholar's Fellowship

The Tang Center offers Visiting Scholar's Fellowship each year to one scholar for an in-residence research period of 10 months at Columbia University, or to two scholars for a period of 5 months each, depending on the need of the proposed projects. The applicant must be non-US based.

#### Workshop and Conference Grants

The Tang Center offers grants in the amount of \$13,000 each to up to two workshop and/or conference proposals each academic year, depending on the scale. Each workshop or conference should have an identified central problem or theme on which the papers will focus. Alternatively, the workshop/conference can be centered on a newly discovered corpus of materials or manuscripts, or on an important archaeological site, or a region.

*Application deadline, November 30, for all programs.*

*For more information, please visit our website [www.tangcenter-columbia.org](http://www.tangcenter-columbia.org).*

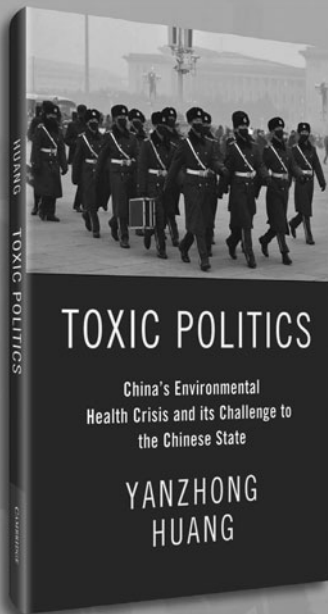
*Questions directed to: [info@tangcenter-columbia.org](mailto:info@tangcenter-columbia.org); or by phone: 212.854.5546.*

*509 Kent Hall, MC3907, 1140 Amsterdam Avenue, New York, NY 10027*

# TOXIC POLITICS

China's Environmental Health Crisis and  
its Challenge to the Chinese State

YANZHONG HUANG



“ In this astonishingly prescient analysis, Yanzhong Huang zeroes in on the vital link between China’s political health and its physical health. His tough, fair-minded, deeply knowledgeable book not only diagnoses grave problems lurking behind China’s environmental progress but also provides a cautionary note about China’s bid for global leadership. Anyone who wants to predict China’s growth prospects needs to read this. ”

Evan Osnos, author of *Age of Ambition*

## FOLLOW US ON SOCIAL MEDIA

- 📍 CambridgeUniversityPressPolitics
- 🐦 @CUP\_PoliSci
- 📍 cupacademic



## Instructions for Contributors

*The China Quarterly* welcomes the submission of manuscripts from scholars, including postgraduate students, on all aspects of contemporary China, including Taiwan, Hong Kong, Macau and Tibet. Submissions in the fields of religion, media, literature, or on China prior to 1978, will be considered if they engage with issues of wider significance in contemporary China.

*The China Quarterly* will consider two main types of submissions: regular articles (up to 9,000 words, including footnotes): in-depth and theoretical pieces which should present original research in combination with analytical argument; Research reports (up to 4,000 words, including footnotes): shorter pieces based on primary research and empirical evidence. We will not consider manuscripts that are under consideration elsewhere, or that have been published in any form in any language.

Article manuscripts should be submitted through the ScholarOne online submission and peer review system (<http://mc.manuscriptcentral.com/cqy>). If you experience technical difficulties, please contact the Editorial Office at [chinaq@soas.ac.uk](mailto:chinaq@soas.ac.uk). An abstract of 100–150 words, some keywords and a bibliography should also be provided.

All submissions should conform to the styling of *The China Quarterly*.

### Style

#### Romanization and Chinese characters

Use *pinyin* without tone/diacritical marks, except for Chiang Kai-shek, Sun Yat-sen, Taipei, Kuomintang, and names of people living outside mainland China. Give Chinese characters on the first occurrence of each Romanization.

Chinese characters are incorporated into article texts (ie. English (pinyin, characters)) so authors must provide Chinese characters for *all* Chinese used in the main text (not footnotes) on first appearance, **including** *pinyin* phrases, people's names and geographical locations.

#### Numbers

One to ten spelled out, 11 or more in figures; per cent in text, but % in footnotes. Dates: 2 March 1993. Page references: 324–26 but 324–336.

#### References in footnotes

Books, chapters and articles should be shortened to the author-date-page format as follows:

Smith 2010, 15.

Smith and Wang 2011, 55–57.

#### Bibliography

All bibliographical references should be included at the end of the article in alphabetical order. Examples:

O'Brien, Kevin, and Lianjiang Li. 2006. *Rightful Resistance in the Chinese Countryside*. New York: Cambridge University Press.

Chen, Peiai. 2008. *Zhongwai guanggao shi (A History of Advertising in China and Beyond)*. Beijing: Zhongguo yujia chubanshe.

Perry, Elizabeth, J. 2011. "From mass campaigns to managed campaigns: 'constructing a new socialist countryside'." In Sebastian Heilmann and Elizabeth J. Perry (eds.), *Mao's Invisible Hand: The Political Foundations of Adaptive Governance in China*. Cambridge, MA: Harvard University Press, 30–61.

Kong, Baohua. 2011. "Gongmin canyu he gongmin yishi" (Civic participation and civic consciousness). In Zhang Miaoqing et al. (eds.), *Aomen tequ xinxiang: shi nian fazhan yu bianhua (The New Face of Macao SAR: Ten Years of Development and Changes)*. Hong Kong: Zhongwen daxue Xianggang Yatai yanjiusuo, 339–362.

Jung, Chulho, Kerry Krutilla and Roy Boyd. 1996. "Incentives for advanced pollution abatement technology at the industry level: an evaluation of policy alternatives." *Journal of Environmental Economics and Management* 30 (1), 95–111.

Liu, Weikeng. 2006. "Lingnan shezhi zuizao de liu xian zhiyi – Sihui" (Sihui: one of the six counties set up the earliest in Lingnan's history). *Lingnan wenshi* 3, 12–14.

A more detailed style sheet is available on request and online at [journals.cambridge.org/CQY](http://journals.cambridge.org/CQY)

### Copyright

It is a condition of publication in the Journal that authors assign copyright to SOAS University of London. This ensures that requests from third parties to reproduce articles are handled efficiently and consistently and will also allow the article to be as widely disseminated as possible. In assigning copyright, authors may use their own material in other publications provided that the Journal is acknowledged as the original place of publication, and Cambridge University Press is notified in writing and in advance.

CAMBRIDGE UNIVERSITY PRESS

University Printing House, Cambridge CB2 8BS, United Kingdom

1 Liberty Plaza, Floor 20, New York, NY 10006, USA

477 Williamstown Road, Port Melbourne, VIC 3207, Australia

Ruiz de Alarcón 13, 28014 Madrid, Spain

# Contents

## Articles

- 611 Bureaucratic Slack in China: The Anti-corruption Campaign and the Decline of Patronage Networks in Developing Local Economies  
*Peng Wang and Xia Yan*
- 635 Maintaining Social Stability without Solving Problems: Emotional Repression in the Chinese Petition System  
*Rui Hou*
- 655 Shame, Face and Social Relations in Northern China: Ramifications for Social Assistance Provision  
*Lichao Yang, Robert Walker and Jian Xie*
- 676 Politics of Scale, Bargaining Power and Its Spatial Impacts: Planning for Intercity Railways in the Pearl River Delta, China  
*Mengmeng Zhang, Jiang Xu and Calvin King Lam Chung*
- 701 Chinese Outbound Investment in Australia: From State Control to Entrepreneurship  
*Wei Li and Hans Hendrichske*
- 737 The Paradox of Gender Reversal: Dance Hosts and the Pursuit of Gender Ideals in Contemporary China  
*Juan Chen*
- 757 More Than Half the Sky: Women and Urban Neighbourhood Workshops in China, 1958–1978  
*Hanchao Lu*
- 780 The Strength of a Weak Organization: The Communist Youth League as a Path to Power in Post-Mao China  
*Jérôme Doyon*
- 801 Not a Peasant Movement: The Livelihood Struggles of the Taiwanese Labouring Population under the Broken Promise of High-tech Development  
*You-Lin Tsai*

## Research Reports

- 823 Re-evaluating Political Trust: The Impact of Survey Nonresponse in Rural China  
*Kerry Ratigan and Leah Rabin*
- 839 Different Demands, Varying Responses: Local Government Responses to Workers' Collective Actions in South China  
*Yujeong Yang and Wei Chen*
- 855 Acquiring a Beijing *hukou*: Who Is Eligible and Who Is Successful?  
*Tao Liu and Qiuji Shi*

## 869 Book Reviews

PUBLISHED BY CAMBRIDGE UNIVERSITY PRESS ON BEHALF OF  
SOAS UNIVERSITY OF LONDON

Cambridge Core

For further information about this journal  
please go to the journal web site at:  
[cambridge.org/cqy](http://cambridge.org/cqy)



MIX  
Paper from  
responsible sources  
FSC® C007785

CAMBRIDGE  
UNIVERSITY PRESS