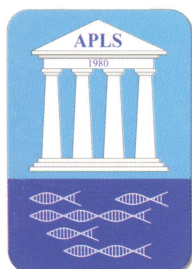
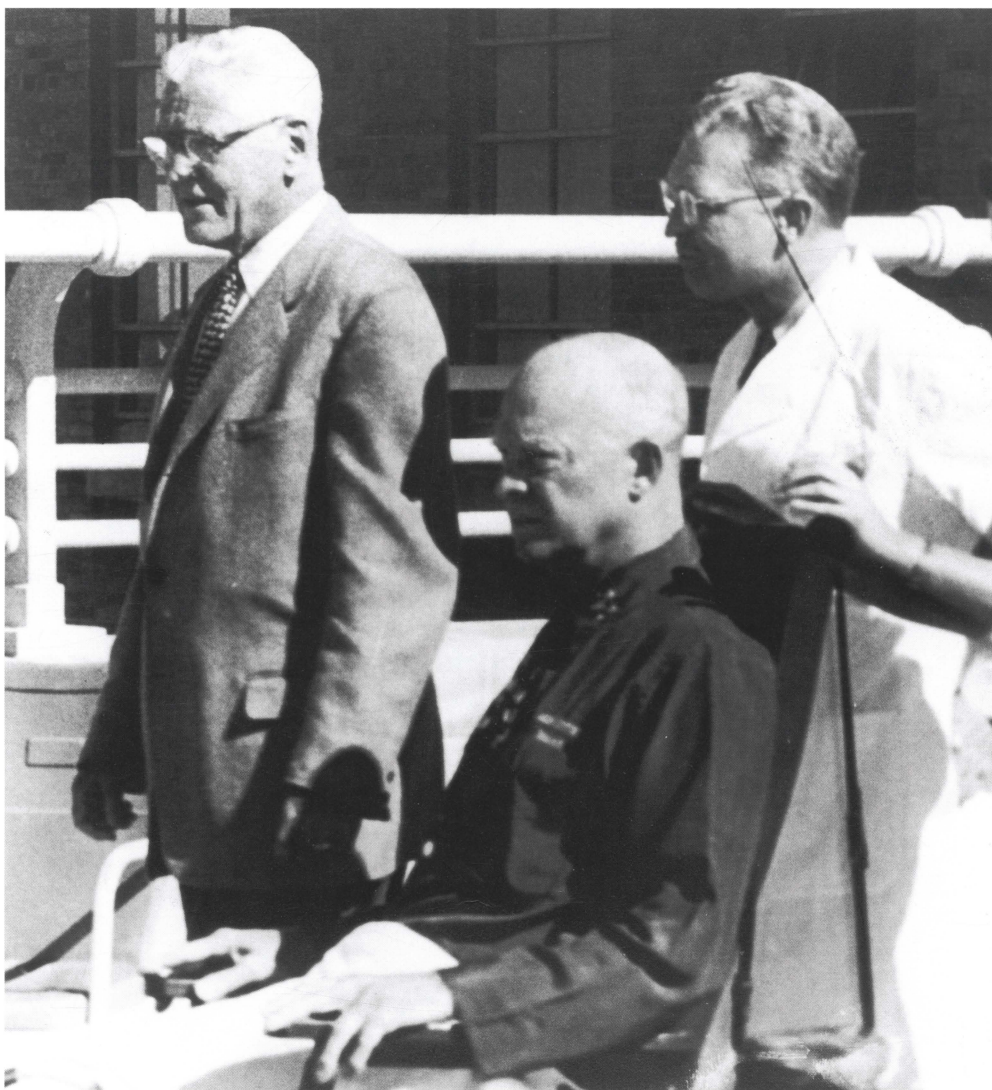


# POLITICS AND THE LIFE SCIENCES

A JOURNAL OF POLITICAL BEHAVIOR, ETHICS, AND POLICY

VOL. 31, NO. 1-2

SPRING/FALL 2012



PUBLISHED BY  
**THE ASSOCIATION FOR POLITICS AND THE LIFE SCIENCES**

[WWW.POLITICSANDTHELIFESCIENCES.ORG](http://WWW.POLITICSANDTHELIFESCIENCES.ORG)

[WWW.APLSNET.ORG](http://WWW.APLSNET.ORG)

# POLITICS AND THE LIFE SCIENCES

A JOURNAL OF POLITICAL BEHAVIOR, ETHICS, AND POLICY

## Editors, Advisors, and Officers

### Editor-in-Chief

**Erik P. Bucy, Ph.D.**  
College of Media and Communication  
Texas Tech University

### Contributing Editors

**Laurette T. Liesen, Ph.D.**  
Department of Political Science  
Lewis University, Contributing editor  
for submissions and peer review

**Robert Hunt Sprinkle, M.D., Ph.D.**  
School of Public Policy, University  
of Maryland, Contributing editor  
for electronic publishing

**Bradley A. Thayer, Ph.D.**  
Department of Political Science  
Utah State University, Contributing editor  
for book reviews

### Editorial Assistant

**Nichole M. Bauer M.A.**  
Department of Political Science  
Indiana University

### Former Editors-in-Chief

**Robert Hunt Sprinkle, M.D., Ph.D.**  
School of Public Policy  
University of Maryland  
2001–2008

**Gary R. Johnson, Ph.D.**  
Department of Political Science  
Lake Superior State University  
1991–2001

**Thomas C. Wiegale, Ph.D.**  
Department of Political Science  
Northern Illinois University  
1981–1991

### Editorial Advisory Board

**Laura Betzig, Ph.D.**  
Whitmore Lake, Michigan

**Ted Brader, Ph.D.**  
University of Michigan

**Eileen Burgin, Ph.D.**  
University of Vermont

**William P. Brandon, Ph.D., M.P.H.**  
University of North Carolina,  
Charlotte

**Lawrence D. Brown, Ph.D.**  
Columbia University

**Marie Isabelle Chevrier, Ph.D.**  
University of Texas at Dallas

**Mary E. Clark, Ph.D.**  
George Mason University

**Herman E. Daly, Ph.D.**  
University of Maryland

**John Hibbing, Ph.D.**  
University of Nebraska

**Kevin D. Hunt, Ph.D.**  
Indiana University

**Bartha Maria Knoppers,  
L.L.B., B.C.L., L.L.D.**  
McGill University

**Roger D. Masters, Ph.D.**  
Dartmouth College

**Glenn McGee, Ph.D.**  
Albany Medical College

**Janna Merrick, Ph.D.**  
University of South Florida

**Thomas H. Murray, Ph.D.**  
The Hastings Center

**John E. Newhagen, Ph.D.**  
University of Maryland

**John Orbell, Ph.D.**  
University of Oregon

**Erik Parens, Ph.D.**  
The Hastings Center

**Graham S. Pearson, Ph.D.**  
University of Bradford

**Steven A. Peterson, Ph.D.**  
Penn State Harrisburg

**Jerrold M. Post, M.D.**  
George Washington University

**Malcolm Potts, M.B., B.Chir., Ph.D.**  
University of California, Berkeley

**Bradley A. Thayer, Ph.D.**  
Utah State University

**Frans B. M. de Waal, Ph.D.**  
Emory University

**Susan Wright, Ph.D.**  
University of Michigan

### Executive Directors

#### ASSOCIATION FOR POLITICS AND THE LIFE SCIENCES

**David B. Goetze, Ph.D.**  
Utah State University, 2002–2010

**Gary R. Johnson, Ph.D.**  
Lake Superior State University, 1996–2001

**James N. Schubert, Ph.D.**  
Northern Illinois University, 1991–1996

**Thomas C. Wiegale, Ph.D.**  
Northern Illinois University, 1981–1991

### Executive Council

#### ASSOCIATION FOR POLITICS AND THE LIFE SCIENCES

**Rebecca C. Hannagan, Ph.D.**  
Northern Illinois University, *Vice Chair*

**Rebecca C. Harris, Ph.D.**  
Washington and Lee University

**Samuel M. Hines, Jr., Ph.D.**  
The Citadel

**Laurette Liesen, Ph.D.**  
Lewis University

**John Orbell, Ph.D.**  
University of Oregon

**Steven A. Peterson, Ph.D.**  
Pennsylvania State University, Harrisburg

**Robert Hunt Sprinkle,  
M.D., Ph.D.**  
University of Maryland, *Chair*

**Patrick Stewart, Ph.D.**  
University of Arkansas

**John Strate, Ph.D.**  
Wayne State University

**Bradley A. Thayer, Ph.D.**  
Utah State University

**Ronald F. White, Ph.D.**  
College of Mount St. Joseph, *Secretary*

### On the cover

This photo of a wheelchair-bound Dwight D. Eisenhower was taken on the grounds of Fitzsimons Army Hospital in Denver on October 25, 1955, about a month after Eisenhower experienced a massive heart attack while in office. Standing to Eisenhower's right is White House Physician, Dr. Howard Snyder, who attended to the president throughout his convalescence. On the pocket of Ike's shirt appears the phrase, "Much better, thanks"—an allusion for press photographers to how he was feeling. Reprinted with permission from the National Park Service, U.S. Army, and Dwight D. Eisenhower Presidential Library and Museum, Abilene, Kansas.

Welcome to <i>PLS</i>	ii
From the editor: Biopolitics—still descriptive?	1

### RESEARCH ARTICLES

The competing meanings of "biopolitics" in political science <i>Biological and postmodern approaches to politics</i> Laurette T. Liesen and Mary Barbara Walsh	2
The impact of presidential illness on the administration of Dwight D. Eisenhower Robert E. Gilbert	16
Public attitudes toward biofuels <i>Effects of knowledge, political partisanship, and media use</i> Michael A. Cacciatore, Andrew R. Binder, Dietram A. Scheufele, and Bret R. Shaw	36
Swine flu <i>Mexico's handling of A/H1N1 in comparative perspective</i> Sophal Ear	52
Research ethics and Institutional Review Boards <i>The influence of moral constraints on emotion research</i> Michael Sontag	67

### PERSPECTIVES

Hypernews, biological authenticity, and the mediation of what's important John E. Newhagen	80
News coverage of controversial emerging technologies <i>Evidence for the issue attention cycle in print and online media</i> Ashley A. Anderson, Dominique Brossard, and Dietram A. Scheufele	87

### BOOK REVIEWS

Martha A. Farah, <i>Neuroethics: An Introduction with Readings</i> , and Eric Racine, <i>Pragmatic Neuroethics: Improving Treatment and Understanding of the Mind-Brain</i> Reviewed by Adam Konopka and Michael Sontag	97
Robin Fox, <i>The Tribal Imagination: Civilization and the Savage Mind</i> Reviewed by Bradley A. Thayer	101
Mark van Vugt and Anjana Ahuja, <i>Naturally Selected: The Evolutionary Science of Leadership</i> Reviewed by Robert B. Affe	104

### IN MEMORIAM

Elinor Ostrom: Scholar, mentor	107
--------------------------------	-----

© Association for Politics and the Life Sciences, 2012