

## ARTICLES

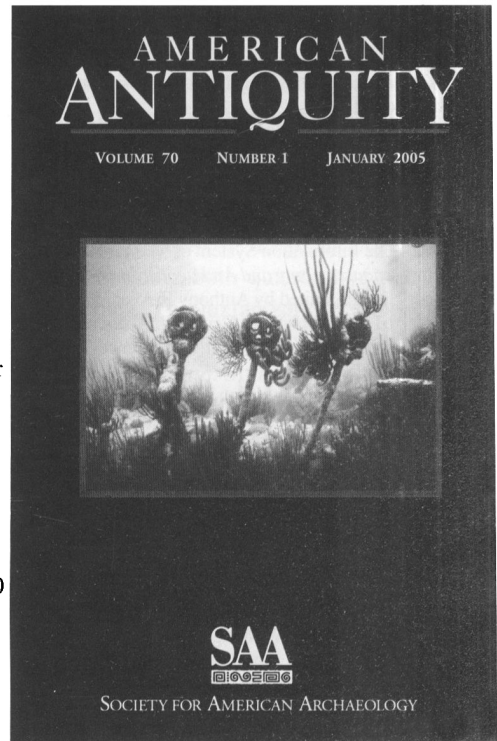
- 5 Communities, Settlements, Sites, and Surveys: Regional-Scale Analysis of Prehistoric Human Interaction  
*Peterson and Robert D. Drennan*
- 31 Reconsidering Spatial and Temporal Aspects of Prehistoric Cultural Identity:  
A Case Study from the American Southwest  
*Wesley Bernardini*
- 55 Culture Contact or Colonialism? Challenges in the Archaeology of Native North America  
*Stephen W. Silliman*
- 75 Does Size Matter? Body Size, Mass Collecting, and Their Implications for Understanding Prehistoric Foraging Behavior  
*Andrew Ugan*
- 91 The Effects of the Hypsithermal on Prehistoric Foraging Efficiency in Missouri  
*Steve Wolverton*
- 107 The Wreck of the Barque *North Carolina*, Bermuda, 1880: An Underwater Crime Scene?  
*Richard A. Gould*

## REPORTS

- 129 The Emerging Archaeology of Glaciers and Ice Patches: Examples from Alaska's Wrangell-St. Elias National Park and Preserve  
*E. James Dixon, William F. Manley, and Craig M. Lee*
- 144 Nineteenth-Century Arrow Wounds and Perceptions of Prehistoric Warfare  
*George R. Milner*
- 157 Publishing Archaeology in *Science* and *Scientific American*, 1940–2003  
*R. Lee Lyman, Michael J. O'Brien, and Michael Brian Schiffer*

## COMMENTS

- 169 The Emergence of Large Villages and Large Residential Corporate Group Structures among Complex Hunter-Gatherers at Keatley Creek  
*Brian Hayden*
- 175 The Emergence of Complex Hunter-Gatherers on the Canadian Plateau: A Response to Hayden  
*William C. Prentiss, Michael Lenert, Thomas A. Foor, and Nathan B. Goodale*
- 181 Ethnoarchaeology in Indonesia Illuminating the Ancient Past at Çatalhöyük?  
*Ron L. Adams*
- 189 Socialization and Feasting at Çatalhöyük: A Response to Adams  
*Ian Hodder*



## NOTICE TO AUTHORS

*Latin American Antiquity* publishes original papers on the archaeology, prehistory, and ethnohistory of Latin America, i.e., Mesoamerica, Central America, and South America, together with culturally affiliated adjacent regions. Papers may also treat more general theoretical and methodological issues with relevance to Latin America. Authors submit manuscripts to the editor for consideration as ARTICLES or REPORTS in English, Spanish, or Portuguese. Authors should submit an original and three copies of their manuscripts (including all figures, tables, references, and notes), along with an abstract in both English and Spanish. Detailed information on policy, style, and technical matters of manuscript preparation is given in English in the "Editorial Policy, Information for Authors, and Style Guide for *American Antiquity* and *Latin American Antiquity*," which appeared in September 1992 (vol. 3, no. 3) and in Spanish in "Código editorial, información para autores y guía estilística para *American Antiquity* and *Latin American Antiquity*," which appeared in July 1997 (vol. 8, no. 2). This information is also available in English through the World Wide Web at <http://www.saa.org/Publications/StyleGuide/styframe.html>. For additional information, updates, or clarification, consult the managing editor at the SAA office in Washington, D.C.

### BOARD OF DIRECTORS OF THE SOCIETY FOR AMERICAN ARCHAEOLOGY

#### *Officers*

*President:* LYNNE SEBASTIAN, SRI Foundation, 333 Rio Rancho Dr. NE, Suite 103, Rio Rancho, NM 87124

*President-Elect:* KENNETH M. AMES, Portland State University, Department of Anthropology, Portland, OR 97207

*Secretary:* DEAN SNOW, Department of Anthropology, Pennsylvania State University, 409 Carpenter Bldg., University Park, PA 16802

*Secretary-Elect:* LINDA CORDELL, CU Museum, Henderson Building CB 218, University of Colorado, Boulder, CO 80309-0001

*Treasurer:* GEORGE H. ODELL, 600 S College Ave., Department of Anthropology, University of Tulsa, Tulsa, OK 74104-3126

#### *Board Members-at-Large*

PATRICIA A GILMAN, Department of Anthropology, University of Oklahoma, Norman, OK 73019-0001

MADONNA MOSS, Department of Anthropology, 1218 University of Oregon, Eugene, OR 97403-1205

NELLY ROBLES GARCIA, Pino Suarez 715, Oaxaca OAX 68000, Mexico

SARAH H. SCHLANGER, NM Bureau of Land Management, PO Box 27115, NM 930, Santa Fe, NM 97502-0115

MIRIAM T. STARK, Department of Anthropology, University of Hawaii, 2424 Maile Way, Saunders 346, Honolulu, HI 96822-2223

JOE WATKINS, Department of Anthropology MSC01 1040, University of New Mexico, Albuquerque, NM 87131

#### *Ex-Officio Board Member*

TOBI A. BRIMSEK, Society for American Archaeology, 900 Second St NE, Suite 12

## ARTICLES

- 3 *Huayrachinas and Tocoimbos:*  
Traditional Smelting Technology of the Southern Andes  
*Mary Van Buren and Barbara H. Mills*
- 26 The Rise and Fall of an Ancient Maya Petty Royal Court  
*Gyles Iannone*
- 45 Distant Colonies and Explosive Collapse:  
The Two Stages of the Tiwanaku Diaspora in the Osmore Drainage  
*Bruce D. Owen*

## REPORTS

- 81 Agricultural Rhythms and Rituals:  
Ancient Maya Solar Observation in Hinterland Blue Creek, Northwestern Belize  
*Gregory Zaro and Jon C. Lohse*
- 99 How Can Spin, Ply, and Knot Direction Contribute to Understanding the Quipu Code?  
*Marcia Ascher*

*On the Cover:* Structure 38J-2nd, the penultimate temple, prior to courtyard burial. From "The Rise and Fall of an Ancient Maya Petty Royal Court" by Gyles Iannone, page 36.

© The paper used in this publication meets the requirements of ANSI/NISO Z39.48-1992  
(Permanence of Paper).