

# karrimor Rucksacks & Packs

**the international's choice**

Karrimor Equipment is selected for use by the majority of international Climbing Expeditions. Their Sacs, Frames, Tents, Gaiters, Overboots, Karrimats, etc. have achieved International acclaim because of the quality and reliability.



For further details write to: Mr.P.R. Creig.

**karrimor  
International Ltd.**

AVENUE PARADE ACCRINGTON LANCAS ENGLAND



## The Eskimos and Aleuts

DON E. DUMOND

Inhabitants of the vast Arctic regions of the frozen north, the Eskimos and Aleuts were in fact descended from immigrant groups from Asia. But when did these people arrive in the New World? How were they able to colonize such inhospitable regions? What accounts for the mixture of cultural diversity and homogeneity among their descendants? Marshalling the latest evidence from archaeology, anthropology and linguistics, Professor Dumond attempts to answer such fundamental questions in an engrossing and highly readable account.

50 illustrations, 25 line drawings and 10 maps  
8 x 5 $\frac{7}{8}$  ins *Ancient Peoples and Places* £6.50.

*Now available in paperback*

## Forces of Nature

EDITED BY SIR VIVIAN FUCHS

Sir Vivian Fuchs heads a team of eleven authors, each an expert in his field, in an excitingly written and spectacularly illustrated account of the major physical forces which threaten or control the destiny of man - hurricanes, lightning, avalanches, floods, earthquakes, and the slower-acting forces of glaciers, deserts and climatic changes.

'Could become a classic of its kind. It sets a standard of description of our physical environment that is unmatched at the present time.'

*The Guardian*

311 illustrations, 110 in colour, and 15 maps

10 $\frac{1}{2}$  x 8 $\frac{1}{2}$  ins. £4.75

*Prices apply in U.K. only*

 **Thames and Hudson**

# SIMPLE SURVEYING TECHNIQUES FOR SMALL EXPEDITIONS

by Dr. Keith Miller

This booklet gives comprehensive instruction in surveying by small expeditions. It describes predeparture preparation and planning on site. It gives detailed advice on the use of surveying instruments, particularly telescopic alidades, plane tables, theodolites and range finders. A section on field techniques explains tachometry, base lines, levelling, traversing plane tabelling and contouring. Final sections deal with computation of field data and give many special hints on map preparation. There is a short reading list and an appendix of instruments available on loan from the RGS. 52 pages, 2 plates, 16 diagrams, 9 tables. Price £1.50.

A list of the Society's other publications and maps is available on request.

Available from: Publications Department  
Royal Geographical Society  
1 Kensington Gore, London SW7 2AR




**BECK**

**CRAMPON STRAPS  
SNOWSHOE BINDINGS**

Handmade of neoprene nylon, the best iron buckles and copper belt rivets. Will not ice up. Will not stretch. No-time-limit guarantee. Makers of the famous Chouinard Crampion Straps.

Write for free catalog.  
DEPT. R  
**BECK OUTDOOR PROJECTS**  
BOX 1038, CRESCENT CITY, CA 95531



**Lighten  
the  
load**

The BMC Insurance Scheme provides for UK residents the security even the best gear cannot supply. It is worldwide. 12 months cover at a premium which every climber or walker can afford—and cannot afford to be without. From as little as £2.50 p.a., for instance we offer cover for rescue, medical, repatriation, personal accident, baggage and equipment, loss of deposits, public liability. Hut insurance and expedition cover is also available.

Crawford House  
Precinct Centre  
Booth Street East  
Manchester M13 9RZ  
Name \_\_\_\_\_  
Address \_\_\_\_\_  
\_\_\_\_\_

Please send me details of BMC Insurance Schemes (or telephone 061-273 5839)

SPR

# pointfive

WARM  
IN EXTREME COLD



warm  
clothing and  
sleeping bags

DOWN FEED & HOLOFILL

Banton & Co. Ltd. Meadow Lane, No. 1, Birmingham

## ROBERT LAWRIE LTD

ALPINE AND POLAR EQUIPMENT SPECIALISTS

*Showrooms and Offices:*

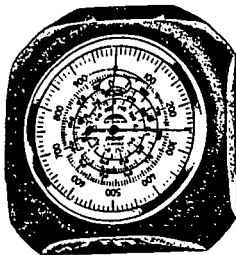
54 SEYMOUR STREET, MARBLE ARCH, LONDON, W1H 5WE  
Telephone 01-723-5252 Telegrams & Cablegrams: Alpinist, London W1

*Business hours:*

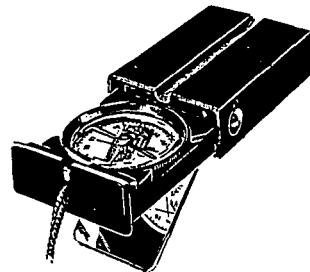
Mon. Tues. Wed. & Friday	9 am-5.30 pm
Late closing: Thursday	9 am-7.00 pm
Early closing: Saturday	9 am-12 noon
Lunch-time closing:	1.45 pm-3.00 pm



**RECTA**



Sole Agents for Swiss Jumar Stirrups; Thommen Altimeter/Barometers and Agents for Swiss Recta Compasses. Specialist makers and suppliers of climbing and mountaineering boots from stock and, when circumstances permit, to special order. General mountaineering equipment and clothing also from stock.



(General catalogue temporarily withdrawn due to present uncertainty of consistent supplies of materials and prices) Please write for details.

# Advertising rates

Advertising rates are as follows:

Whole page (191 × 134 mm)	£60 (US \$100)
Half page (191 × 67 mm or 134 × 95 mm)	£40 (US \$75)
Quarter page (95 × 67 mm)	£25 (US \$50)

There would be a negotiable reduction of these rates for standing orders of three issues or more.

All enquiries concerning advertising should be addressed to The Editor, *Polar Record*, Scott Polar Research Institute, Cambridge CB2 1ER, England.

**PUBLICATIONS FOR SALE AT THE  
SCOTT POLAR RESEARCH INSTITUTE**

**Polar Record**

Sets of *Polar Record*, Vols 1–10 (Nos 1–69), including indexes, are available at £175.00 (US\$350.00) a set.

Issues of *Polar Record*, Vols 11–17 (Nos 70–111) are available at £1.25 (US\$3.50) each.

Issues of *Polar Record* after No 111 are £2.50 (US\$7.00) each.

Indexes to Vols 11–16 are available at £1.25 (US\$3.50) each.

Indexes to each volume after Vol 16 are £2.50 (US\$7.00) each.

**Recent Polar Literature**

*Recent Polar Literature*. Published in January, May and September of each year. Annual subscription £7.50 (US \$21.00). Some back numbers available on request.

**Scott Polar Research Institute Special Publications**

No 2. *The Ross Sea Shore Party, 1914–17*, by R. W. Richards. 1962. £0.55 (US\$1.50).

No 3. *Russian settlement in the north*, by Terence Armstrong. 1965. £4.40 (US\$11.00).

No 4. *Illustrated glossary of snow and ice*, by Terence Armstrong, Brian Roberts and Charles Swithinbank, 2nd edition. 1973. £2.50 (US\$7.00).

**Scott Polar Research Institute Occasional Papers**

No 2. *Universal Decimal Classification for use in polar libraries*, compiled by Brian Roberts. Third edition revised 1976. £5.00 (US \$13.00).

---

*The Antarctic*, by H. G. R. King, London, Blandford Press, 1969. £2.75.

*Diary of the Discovery expedition to the Antarctic regions 1901–04*. By Edward Wilson. Edited from the original mss. in the Scott Polar Research Institute, Cambridge, by Ann Savours. London, Blandford Press, 1966. Reprinted 1975. £8.75.

*Diary of the Terra Nova expedition to the Antarctic, 1910–12*. By Edward Wilson. An account of Scott's last expedition edited from the original mss. in the Scott Polar Research Institute and the British Museum by H. G. R. King. London, Blandford Press, 1972. £7.50.

*Edward Wilson's birds of the Antarctic*. Edited by Brian Roberts from the original illustrations in the Scott Polar Research Institute, Cambridge. London, Blandford Press, 1967. £5.25.

*The Russians in the Arctic: Aspects of Soviet exploration and exploitation of the far north, 1937–57*, by Terence Armstrong. London, Methuen, 1958; reprint edition, Westport, Conn, Greenwood Press, 1972. £4.90.

*Radio echo sounding map of Antarctica (~90°E–180°)*. Series A, 3 sheets (1: Ice sheet surface relief; 2: Sub-ice relief; 3: Surface and sub-ice relief). Cambridge, Scott Polar Research Institute, 1974–75. £1.25 per sheet.

## SCAR publications available at the Scott Polar Research Institute

*International Symposium on Antarctic Glaciological Exploration (ISAGE)* [1968]. Edited by A. J. Gow, C. Keeler, C. C. Langway, and W. F. Weeks. Gentbrugge and Cambridge, ISAH and SCAR, 1970. 543p, illus. (IASH Publication No 86). [Proceedings of the International Symposium on Antarctic Glaciological Exploration (ISAGE), held in Hanover, New Hampshire, 3–7 September 1968, and organized by SCAR and the Commission of Snow and Ice of IASH.] £4.20 (US\$10.00).

*Symposium on Antarctic Oceanography* [1966]. Edited by R. I. Currie. Published by SPRI for SCAR, 1968. 268p, illus. [Proceedings of the Symposium on Antarctic Oceanography, held at Santiago, Chile, 13–16 September 1966, under the direction of H. Mosby and R. I. Currie, sponsored by SCAR, SCOR, IAPO and IUBS.] £2.25 (US\$5.00).

*Symposium on Antarctic Ice and Water Masses* [1970]. Edited by Sir George Deacon. SCAR, Cambridge, 1971. 113p, illus. [Proceedings of the Symposium on Antarctic Ice and Water Masses organized by SCAR in Tokyo, September 1970. Issued free of charge to recipients of *Symposium on Antarctic Oceanography* only.]

*Antarctic geology and geophysics* [1970]. Edited by Raymond J. Adie. Oslo, Universitetsforlaget 1972. 876p, illus. (International Union of Geological Sciences, Series B, Number 1). [Proceedings of the Symposium on Antarctic Geology and Solid Earth Geophysics, Oslo, 6–15 August 1970, organized by SCAR and sponsored by the International Union of Geological Sciences.] N Kr 390.00 (US\$65.00).

*Antarctic telecommunications* [1972]. Edited by A. H. Sheffield. Cambridge, Scientific Committee on Antarctic Research, 1972. 402p, illus. [Proceedings of the SCAR Symposium on Technical and Scientific Problems Affecting Antarctic Telecommunications, Sandefjord, Norway, 10 to 16 May 1972.] £4.20 (US\$10.00).

*SCAR Manual. Second edition.* Cambridge, Scientific Committee on Antarctic Research, 1972. 128p. £2.00 (US\$5.00).

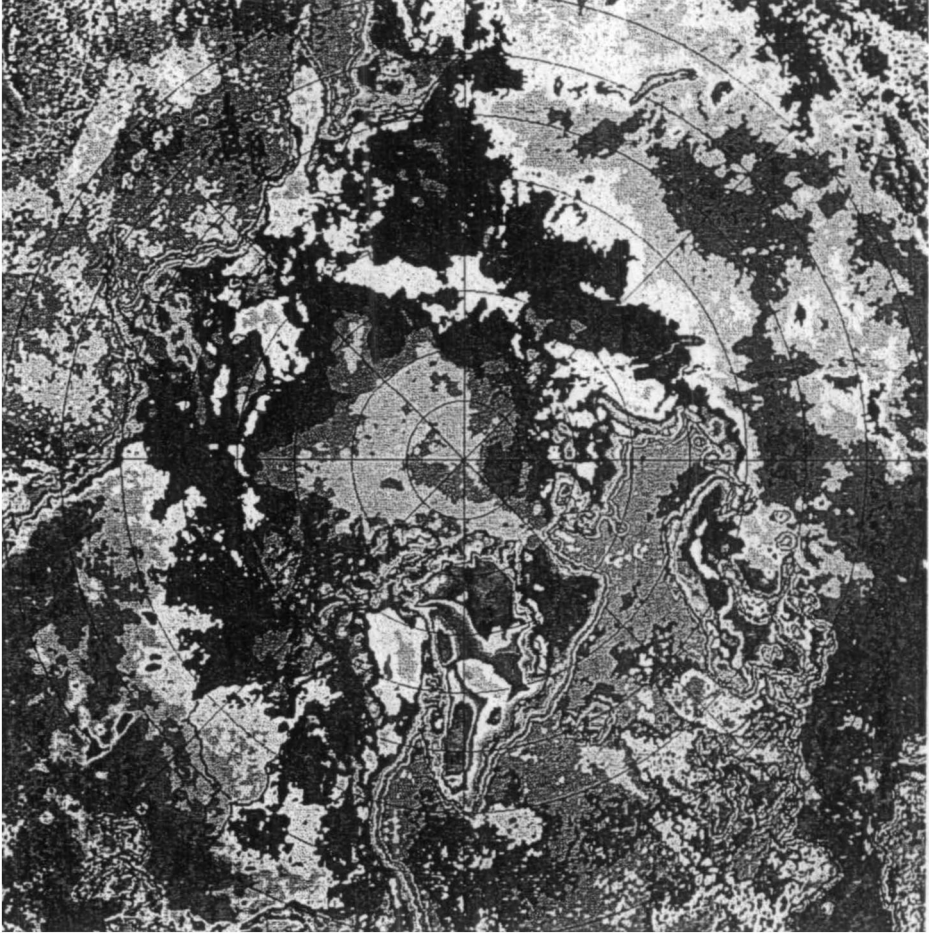
Prices of the works listed above are subject to change without notice.

## THE FRIENDS OF THE POLAR INSTITUTE

This association was established in March 1946 with two objects in view, and it has been successful in their realization. The objects are, first, to provide a means whereby persons interested in polar exploration and research may assist the Scott Polar Research Institute to promote these ends and, secondly, to keep such persons in communication with the Institute and aware of current polar activities. Members receive the annual report of the Friends' Committee, the annual report of the Scott Polar Research Institute, notice of public lectures given in the Institute, and various other communications.

Over the years, the Friends, both as a group and individually, have greatly assisted aspects of the Institute's work. Individuals have offered help or advice in particular problems, and subscriptions and contributions have gone mainly toward special accessions to the Archives, Library, and Museum, to the binding and repair of manuscripts and rare books, and to other needs that could not be met from the Institute's ordinary resources.

The minimum annual subscription is £1.05. Enquiries may be addressed to the Director's Secretary, Scott Polar Research Institute, Cambridge CB2 1ER.



## POLAR RECORD

The journal of the Scott Polar Research Institute, *Polar Record*, is published in January, May and September of each year. The subscription is £7.50 (US \$21.00) a year and £2.50 (US \$7.00) for a single copy. Individual subscribers are given a 10 per cent discount off the annual subscription charge. Subscriptions may be sent to the Scott Polar Research Institute, Cambridge CB2 1ER, England, or to any bookseller.

Contributions are invited on subjects of general or specialized polar interest, including accounts of field work. Intending authors are encouraged to write to the editor in the first instance. Authors of articles receive galley proofs for correction, but proofs of notes and reports of field work are not submitted unless they are especially requested. Authors of articles receive 25 reprints free, and additional copies may be had on order. Reprints of notes or other material are supplied only on request.

Place-names used in *Polar Record* are those authorized by the administrative authority of each area as recognized by the British Government. Names not yet so authorized are avoided, where possible, or placed in quotation marks. Russian names are transliterated by the system agreed in 1947 between the United States Board on Geographic Names and the Permanent Committee on Geographical Names for British Official Use (see *Polar Record*, Vol 6, No 44, 1952, p 546).

Persons wishing to send books and other publications for possible review or for listing in the Institute's bibliography, *Recent Polar Literature*, should send them to the editor at the address given above.

Front cover: Summer 1974–75 microwave image of the Antarctic continent and sea ice.

Back cover: Winter (January 1973) microwave image of the north polar region.

Reproduced with permission of the US National Aeronautics and Space Administration.

Price: £2.50 (US \$7.00)