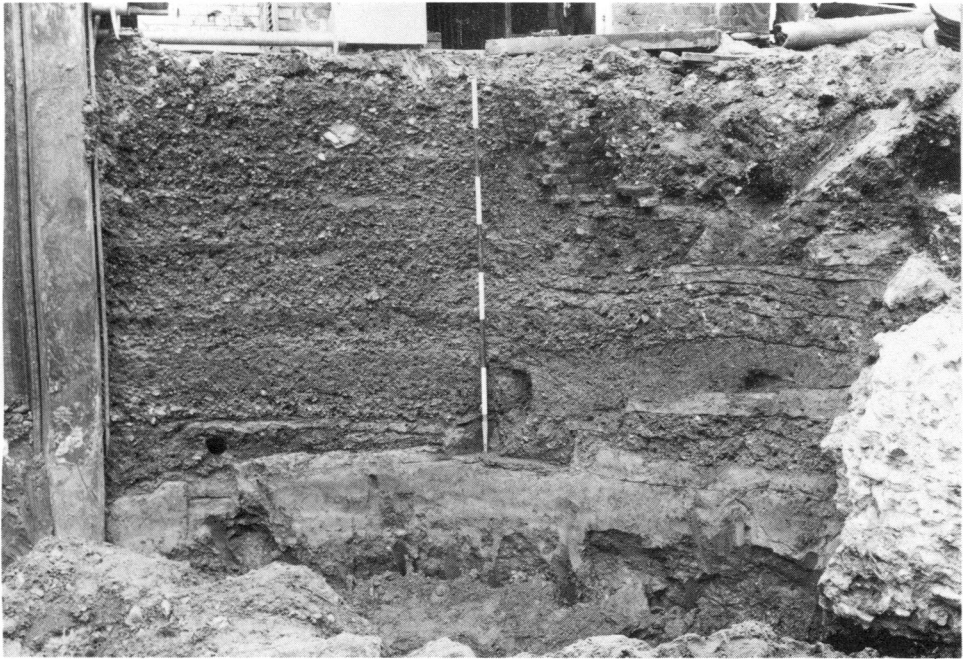
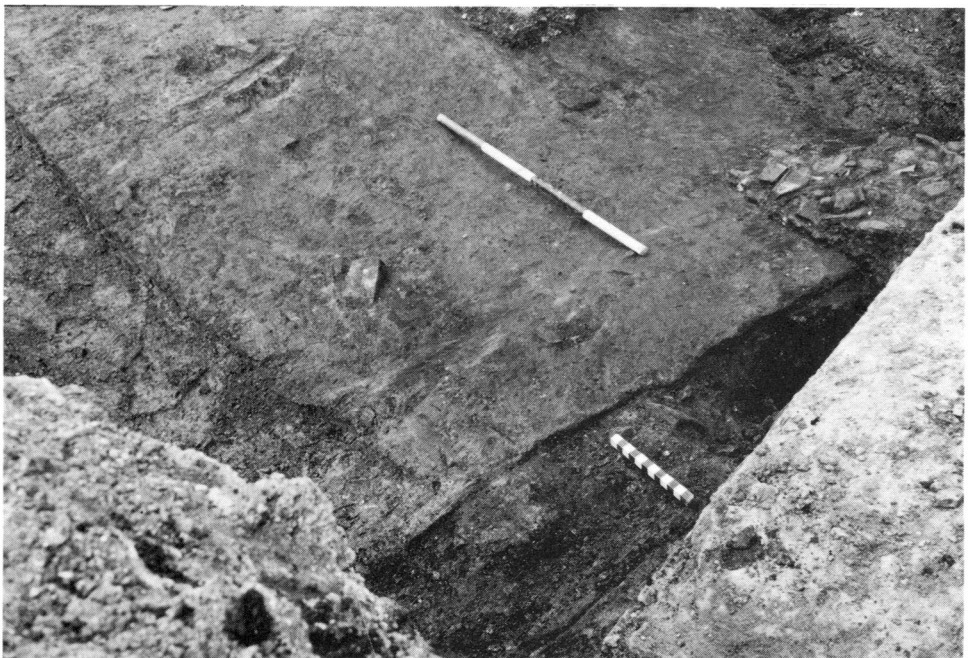


PLATE I



(Photo: B. J. Philp)

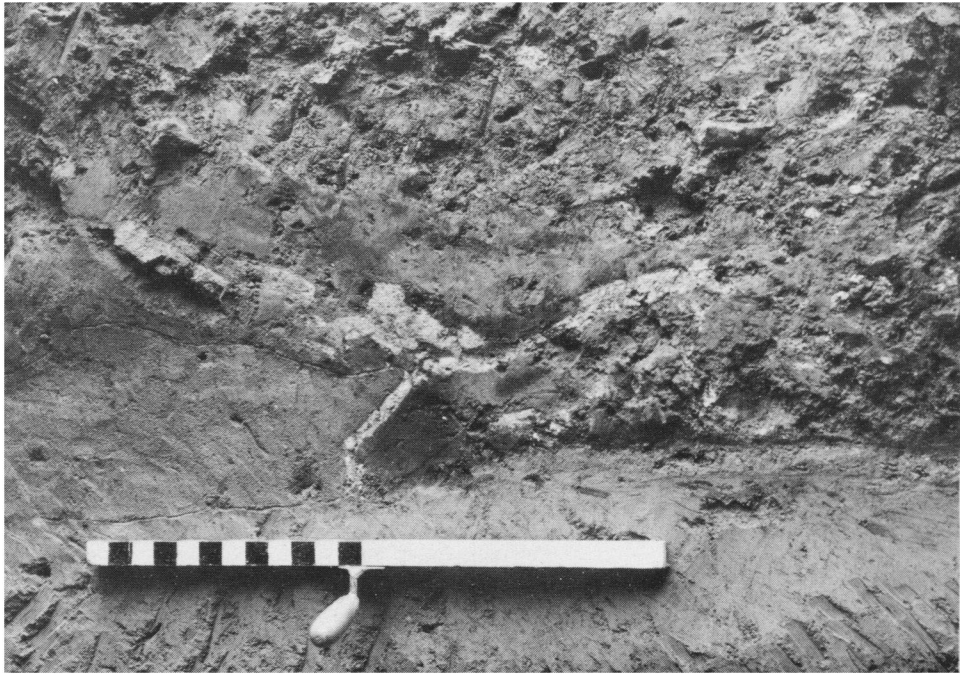
A. London, Forum Site. Successive layers of metalling of main east-west road (Periods I to V) (p. 25 f.). Scale in feet.



(Photo: B. J. Philp)

B. London, Forum Site. Burnt clay floor, fire-debris and foundation-trench (foreground) of 'South' Building (Period III), (p. 12). Scale in feet.

PLATE II



(Photo: B. J. Philp)

A. London, Forum Site. Section of collapsed plastered walls in fire-debris of 'North' building (Period III) (p. 15). Scale: 2 feet.



(Photo: B. J. Philp)

B. London, Forum Site. Ragstone block from 'South' Building (Period III) after extraction by



(Photo: B. J. Philp)

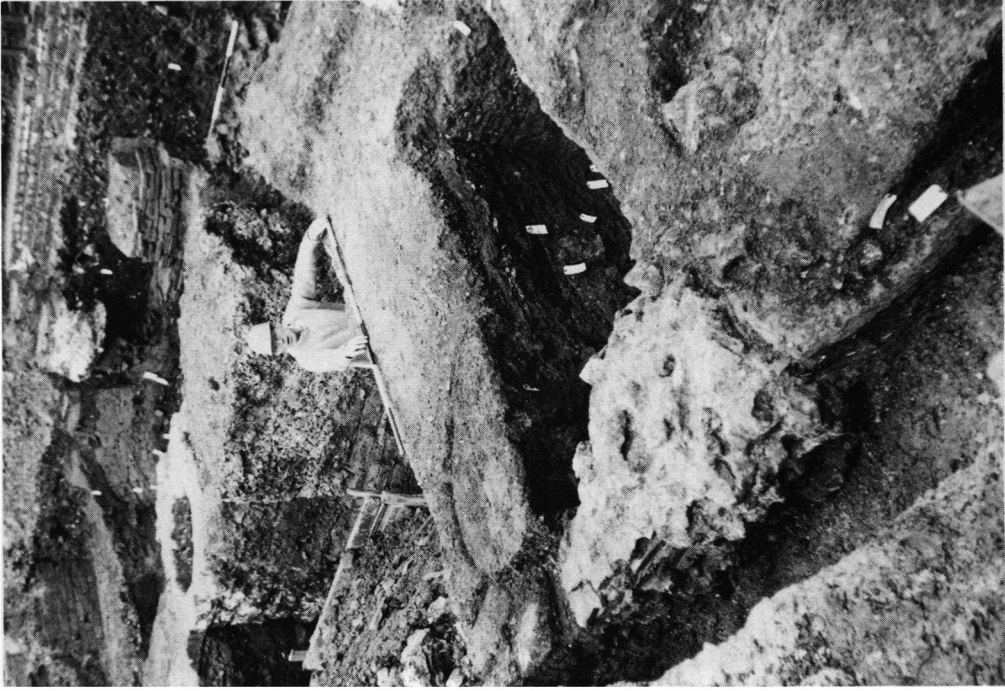
A. London, Forum Site. External south wall of proto-forum (Period IV) with (on left) inserted forum pier-base (Period V), p. 17). Scale in feet.



(Photo: B. J. Philp)

B. London, Forum Site. Internal east wall (right) of proto-forum (Period IV) with butted cross-wall (left), p. 18). Scale in feet.

PLATE IV



(Photo: B. J. Philp)

B. London, Forum Site. East street (under centre rod) and corner buttress of proto-forum (foreground: both Period IV), (pp. 17, 23). Scale in feet.



(Photo: B. J. Philp)

A. London, Forum Site. Range of three oven-bases in Bakehouse (Period IV) (p. 22). Scale in feet.

PLATE V



(Photo: B. J. Philp)

A. London, Forum site. South-centre foundation of South Range of Forum (Period V), (p. 24).
Scale in feet.



(Photo: B. J. Philp)

B. London, Forum Site. South foundation of South Range of Forum (Period V)

PLATE VI



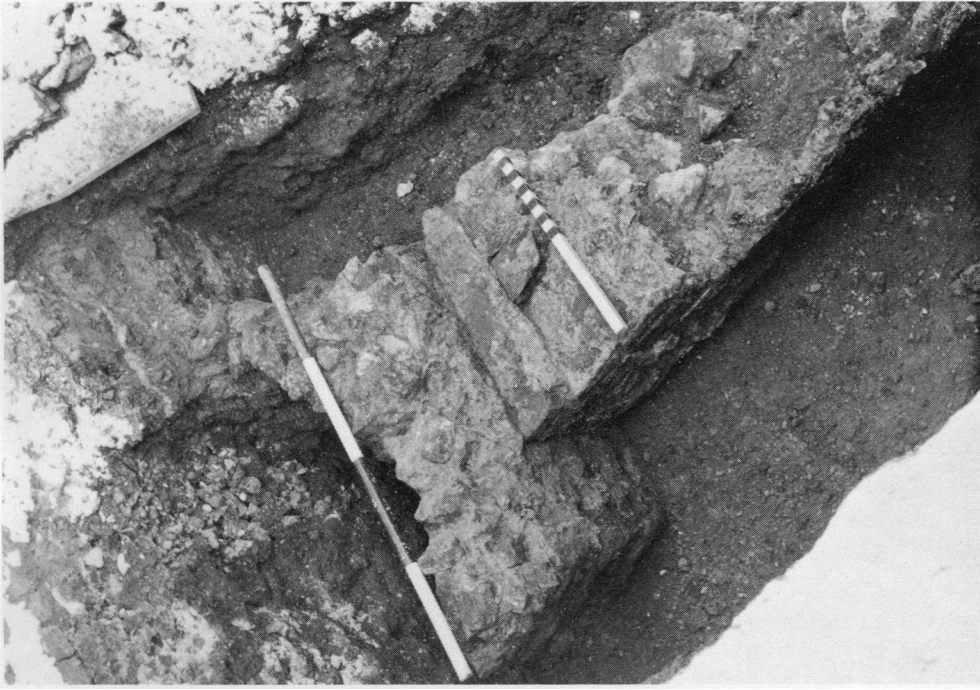
(Photo: B. J. Philp)

London, Forum Site. West-centre foundation of East Range of Forum (Period V), (p. 27).

Scale: feet.



(Photo: B. J. Philp)



(Photo: B. J. Philp)

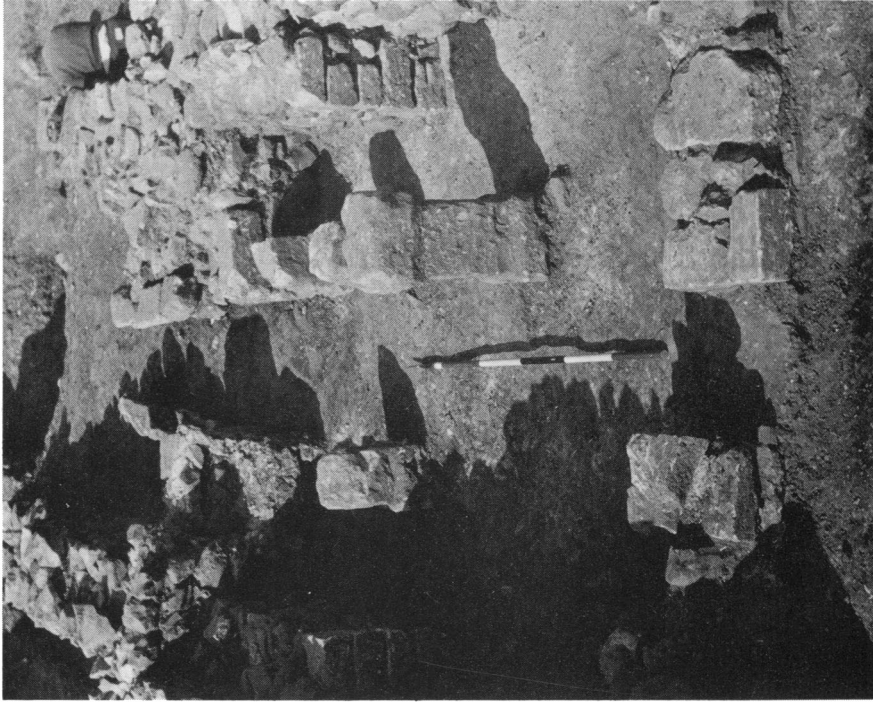
B. London, Forum Site. Pier 8 (Period V) cutting through wall of proto-forum (Period IV), (p. 29). Scale in feet.



(Photo: B. J. Philp)

A. London, Forum Site. Pier 7 (Period V) sliced through by contractor's trench (p. 28). Scale 2 feet.

PLATE VIII



(Photo: H. Miles)

B. Honeyditches villa. The Hot Room and Stoke-hole building, looking north (p. 118). Scale 6 feet.



(Photo: J. Lockett)

A. Colchester. Balkerne Gate: Area A (see p. 94 and FIG. 16) looking south east. Scale in feet.



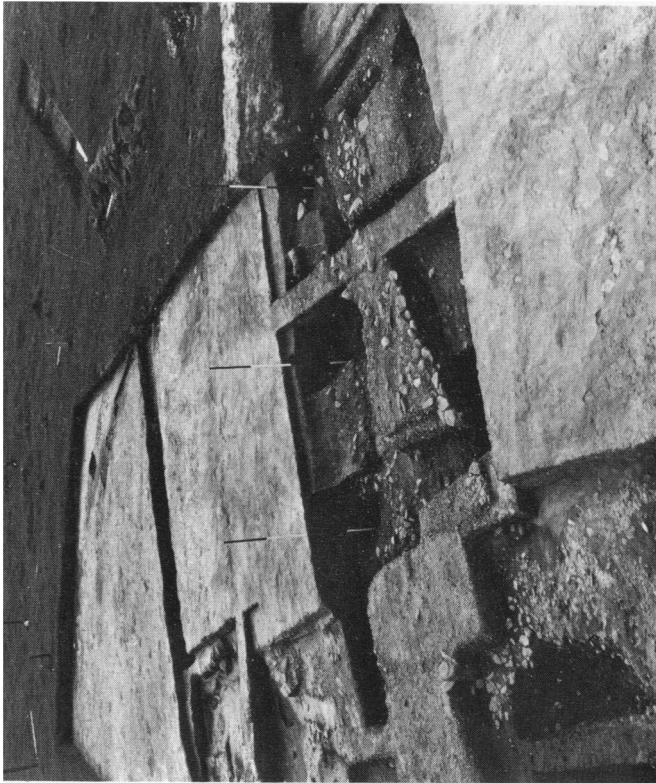
(Photo: H. Miles)

A. Honeyditches villa. The plaster-lined bath and part of the Hot Room, looking north (p. 118).
Scale 6 feet.



(Photo: H. Miles)

B. Honeyditches villa. Beer-stone ashlar quoins and chert walling on the outside of the bath
in the Hot Room, looking west (p. 118). Scale 6 feet.



(Photo: T. W. Potter)

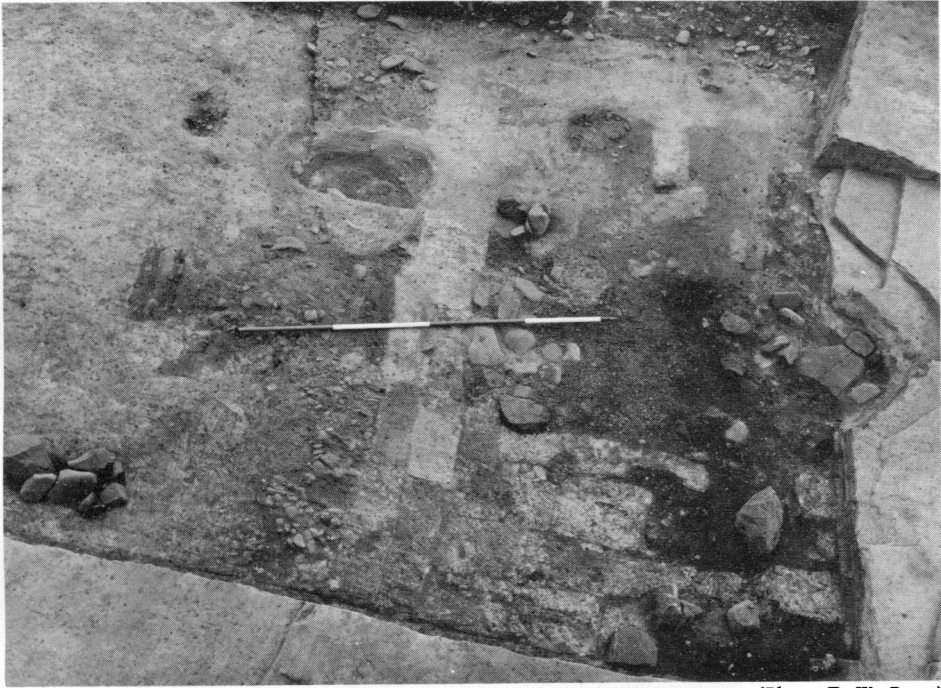
A. Biglands. The entrance, looking north-west (p. 155). Scale: 2 m.



(Photo: T. W. Potter)

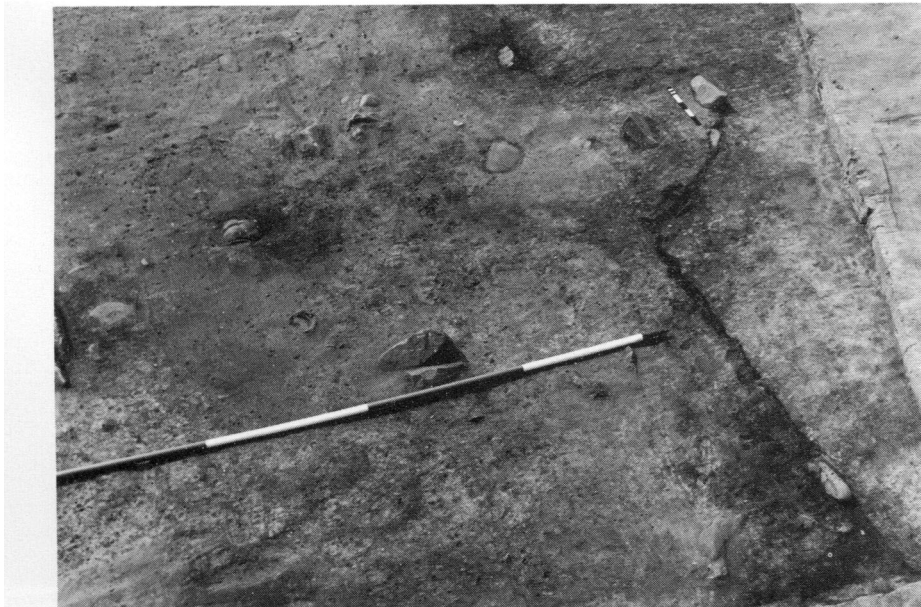
B. Biglands. Section across the south end of the entrance, showing the demolition deposit, underlying the roads of Phases II and III. Cf. p. 156, FIG. 4. Scale: 25 cm.

PLATE XI



(Photo: T. W. Potter)

A. Biglands. Turf wall enclosing cooking area, Phase I. Cf. p. 159, FIG. 6. Scale: 2 m.



(Photo: T. W. Potter)

PLATE XII



(Photo: T. W. Potter)

**A. Biglands. Hearth of Phase II, north-west corner (p. 164).
Note the rampart turves beyond. Scale: 25 cm.**



(Photo: T. W. Potter)

B. Biglands. The fortlet ditch. Scale: 2 m.

PLATE XIII



(Photo: University of Cambridge. Copyright reserved)

**Crop-marks of Roman fort at Well House, Stanway, Essex, looking north, photographed
16 June 1976 (p. 185)**



(Photo: D. N. Riley)

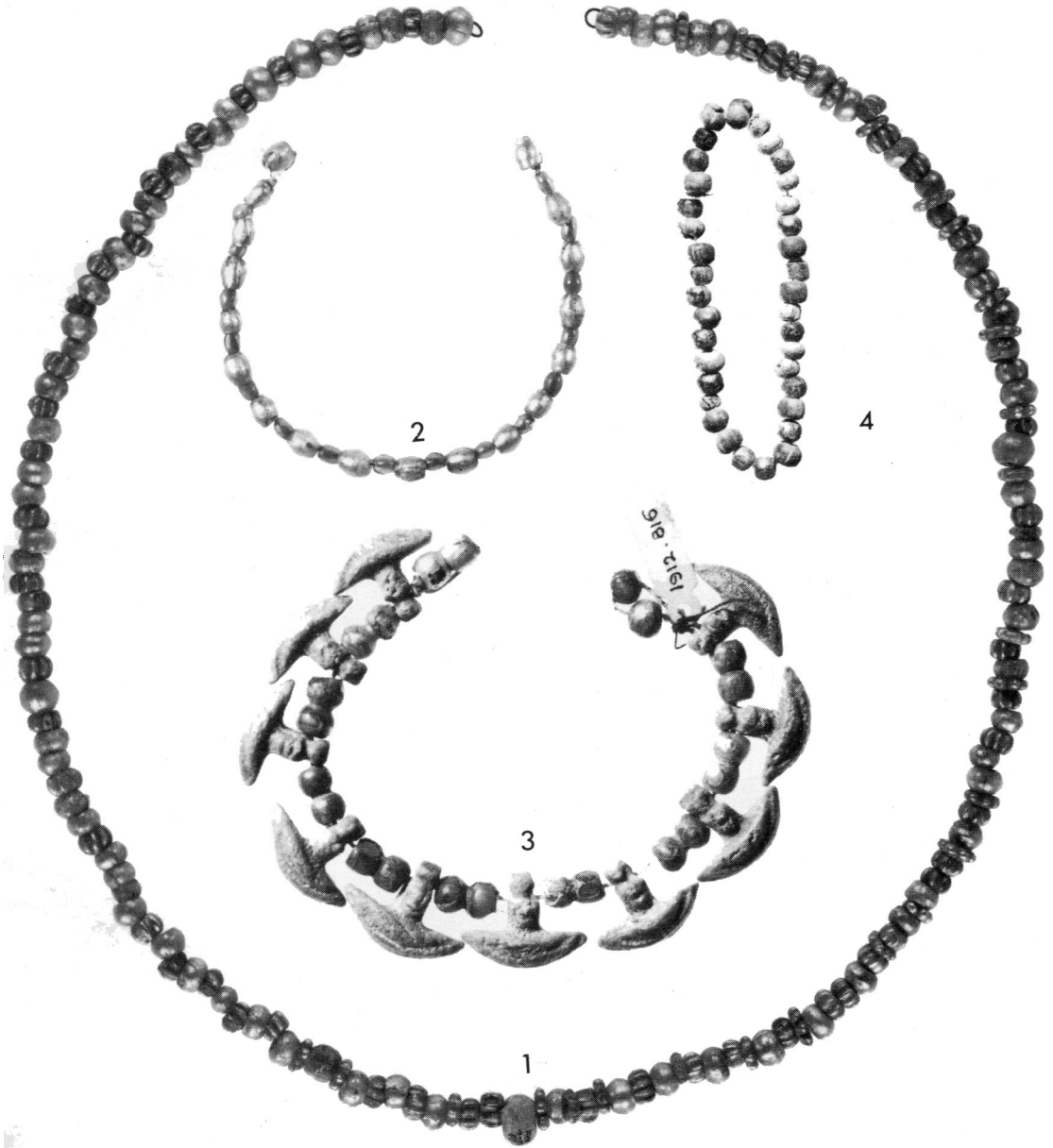
A. Kirmington, South Humberside. Crop-marks of settlement and possible fort (p. 189).



(Photo: B. Hill. Copyright reserved)

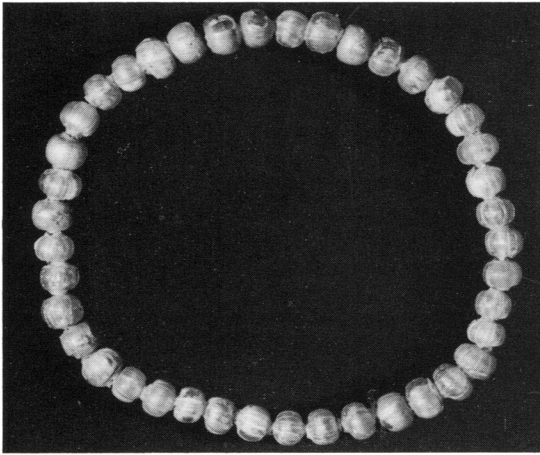
B. Lower Wanborough, Wiltshire. Crop-marks of the mansio and associated bath-house (p. 223).

PLATE XV

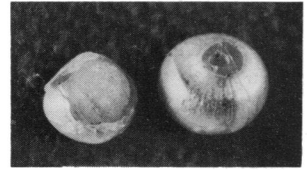


Gold- and (3) Silver-in-Glass Beads (p. 193). (1) *Egypt*, Ptolemaic, 5/8; (2) *Faras*, with cornelian beads, first century B.C., 1/1; (3) *Faras*, with turquoise frit drops, first century A.D., 1/1; (4) *Poienești*, with other beads, first century B.C., and about 1/2.

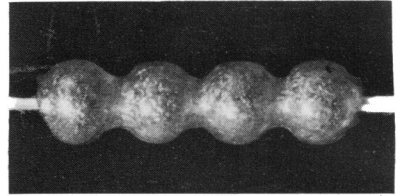
(By permission of the British Museum (1), the Ashmolean Museum (2-3) and the Institute of Archaeology, Bucarest (4)).



1



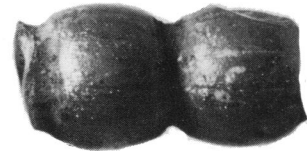
2



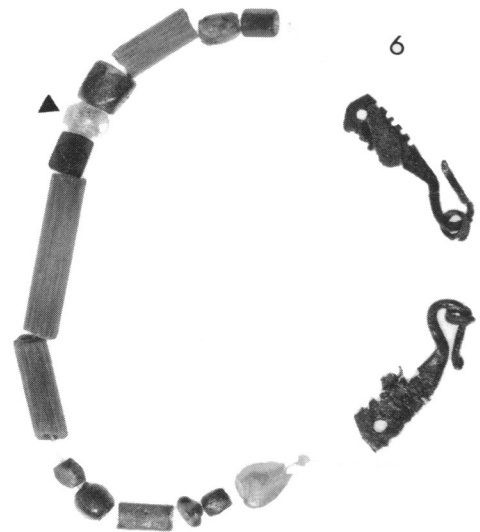
3



4



5



6

Gold- and (6) Silver-in-Glass Beads (p. 193). (1) *Baldock*, Antonine cremation-burial, 1/1; (2) *Caerleon*, Antonine-Severan, about 2/1; (3) *Dinas Powys*, fifth or six century, 4/1; (4) *Panti-capaeum*, second or third century, 4/1; (5) *Verulamium*, with blue and green glass and a jet bead, fourth-century inhumation-burial, 1/1; (6) *Winchester-Lankhills*, with blue and green glass beads and bronze hooks, fourth-century inhumation-burial, 1/1. (By permission of Letchworth Museum, photo Peter Hodge (1), the State Historical Museum, Moscow (4), Verulamium Museum (5) and Winchester Research Unit (6)).

PLATE XVII



1



2



3



4



5



6



7



8



9



10



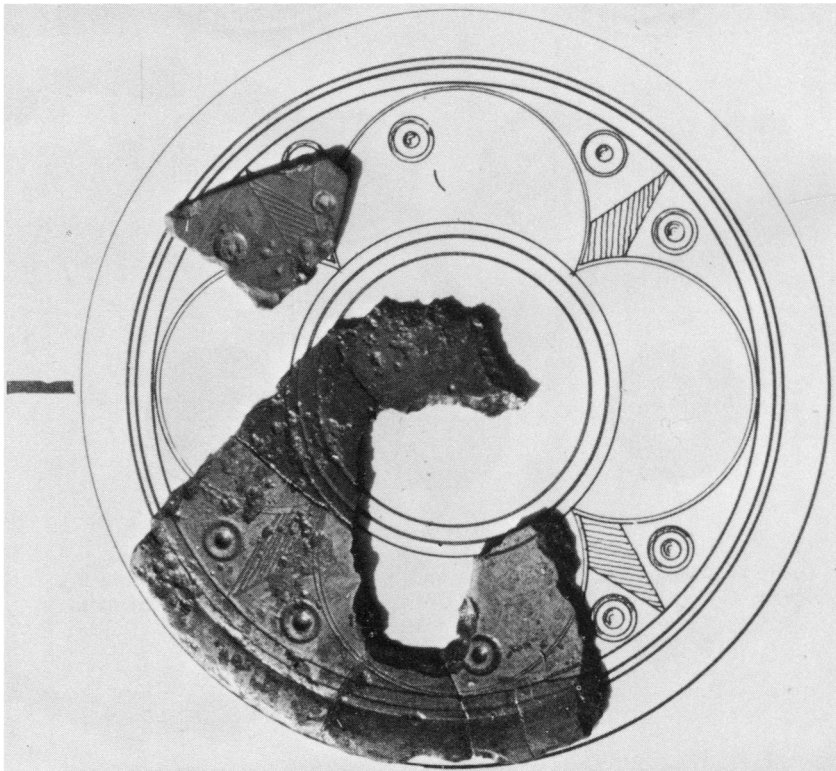
11

Coins and Medallion of Carausius and Allectus (scale 1:1) (pp. 284 ff.).
Nos. 1, 3-5, 10, by courtesy of the British Museum; No. 9 by that of the
Ashmolean Museum.



(Photo: G. Lloyd-Morgan)

A. Bronze mirror from Corbridge, Northumberland (p. 335).
Scale 1:1.



(Photo: G. Lloyd-Morgan)

B. Bronze mirror from Corbridge (p. 335). Scale 1:1.



(Photo: J. H. Money)

A. Garden Hill, East Sussex. General view, looking east, of stone platform of Building B (right foreground), Bath building (left foreground), and southern inturn of hill-fort entrance (extreme left middle ground). Scale in half metres (pp. 339 ff).



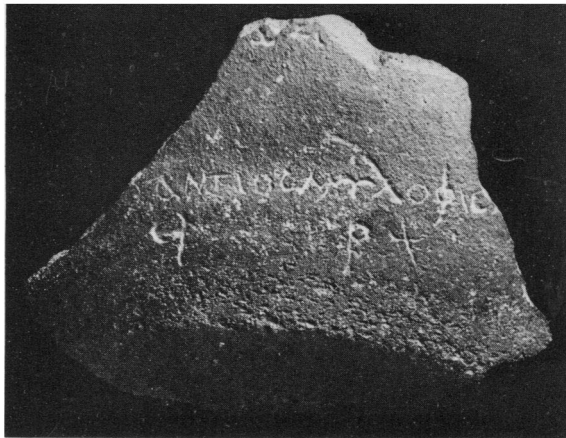
(Photo: J. H. Money)

B. Garden Hill. N.W. corner of cold room, showing rough masonry and remains of *opus signinum* which plastered the walls, quarter-moulding at junction of wall and floor, lead outlet pipe and sandstone floor (p. 346). Scale: 20 cm.



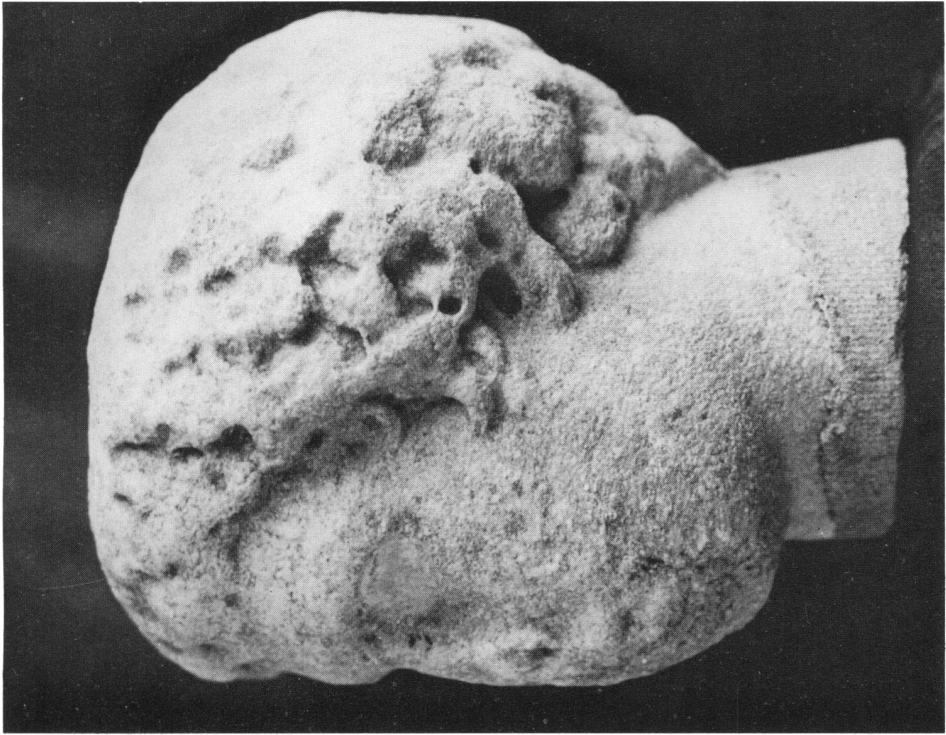
(Photo: J. H. Money)

A. Garden Hill, East Sussex. Cold plunge and cold room of bath building, showing rough stonework plastered with *opus signinum* and stone floor (p. 346). Scale: 1 m.



(Photo: R. L. Wilkins)

B. Inscribed sherd from River Thames at Amerden, Buckinghamshire (p. 279). Scale: 2:3.



(Photos: M. Millet)

Life-size marble head from Crondall Parish Church, Hants. (p. 35f).





(Photos: M. Millet)

A. Marble head from Crondall Parish Church (p. 351).



(Photo: T. Middlemass)

B. Caernarvon: relief panel showing Mars (p. 358). Scale: 1:2.



(Photo: Carlisle Museum)

A. Burgh by Sands, Cumbria: statue of a *Genius* (p. 376). Height: 495 mm.



(Photo: Dr V. A. Maxfield; Crown copyright)



(Photo: T. Ward)

A. Chester, Abbey Green: rampart-building of c. A.D. 100 on the site of a Flavian bread-oven. Newstead's rampart-building (2) is in background (pp. 386-7).



(Photo: A. Gregory)

B. Ellingham, Norfolk: oven floor of pottery-kiln, after removal of clay skin, looking north-west (p. 403).



(Photo: R. F. Smith)

A. Hibaldstow, S. Humberside: general view of the site looking north (p. 389).



(Photo: H. N. Hawley)

B. Lincoln, Cecil Street: north wall of the colonia uncovered in 1976 (pp. 389–90).



(Photo: J. S. Earp)

B. Southwark, 175-77 Borough High Street. First-century revetment for a stream. The stream lies to the left and was edged with posts supporting stout oak planks (p. 409).



(Photo: H. J. M. Green)

A. Godmanchester, Cambridgeshire: pottery-kiln from Park Lane (p. 398).



(Photo: H. N. Hawley for Lincoln Archaeological Trust; copyright reserved)

A. Lincoln, St. Martin's Church: inscribed tombstone
(p. 428, No. 9). Scale 1:6.



(Photo: J. S. Earp)

B. Southwark, 175-77 Borough High Street: *discus* of
first-century lamp showing a donkey-mill (p. 410).
Scale 2:1.



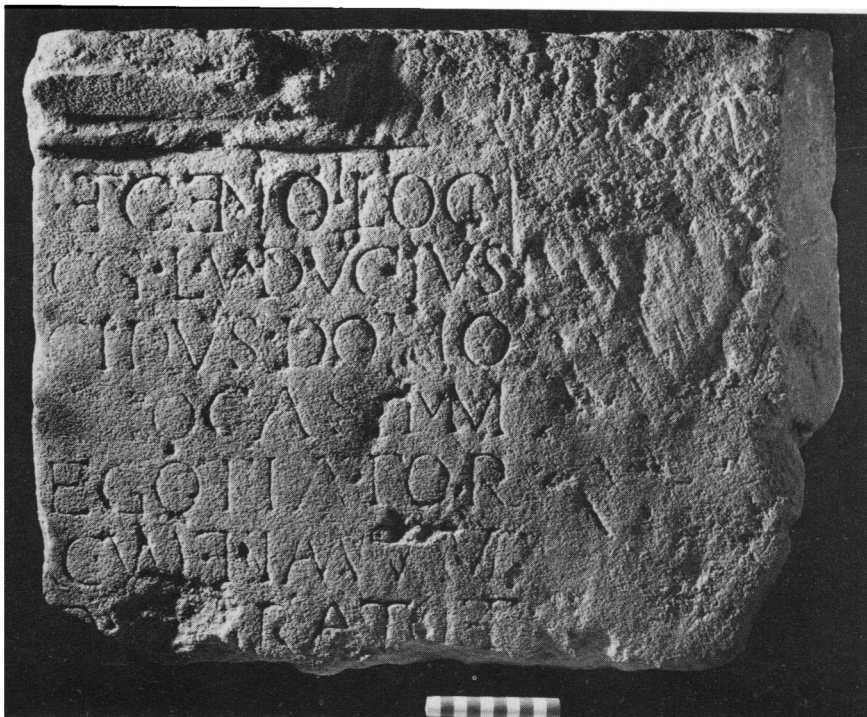
(Photo: C. W. Holby; copyright Colchester and Essex Museum)

C. Colchester, Temple 2: inscribed bronze plaque
(p. 427, No. 7). Scale 1:1



(Photo: T. E. Ward; copyright Grosvenor Museum)

A. Chester, Castle Street: inscribed altar (p. 429, No. 16). Scale: 1:6.



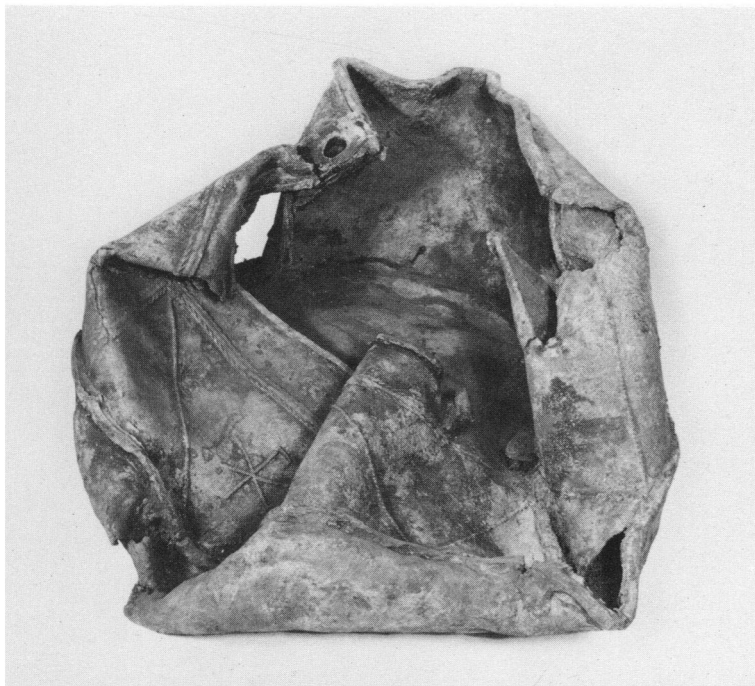
(Photo: M. S. Duffy; copyright, York Archaeological Trust)

B. York, Clementhorpe: dedication-slab of L. Viducius Placidus (p. 430, No. 18). Scale: 1:5.



(Photo: Dept. of the Environment, Scotland; copyright reserved)

A. New Kilpatrick, Bearsden: inscribed building-stone (p. 433, No. 32). Scale 1:2.



(Photo: H. N. Hawley; copyright reserved)

B. Aston, Northants: lead tank with Chi-Rho (p. 443, No. 97). Height of Rho, 11 cm.