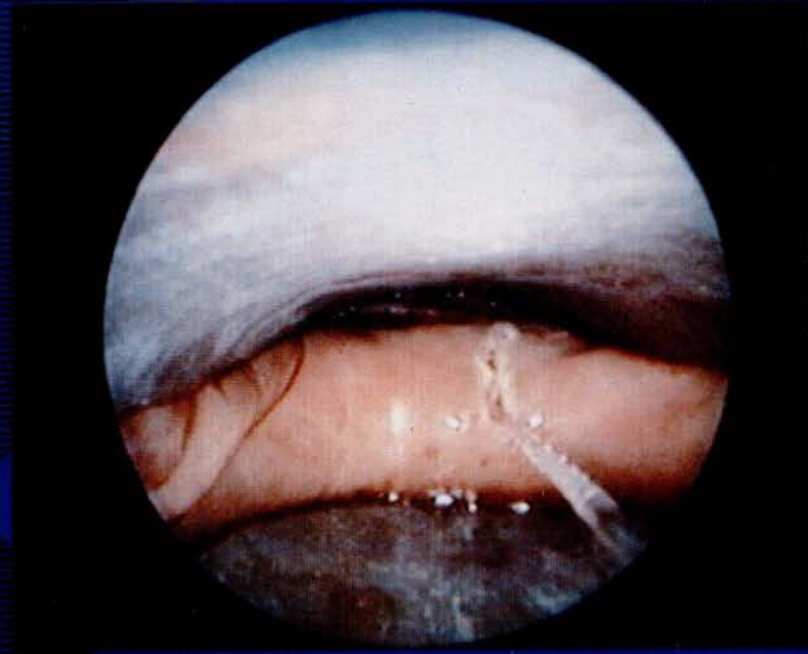


July
1997

The Journal of
**Laryngology
& Otology**

Founded in 1887
by Marshall Mackenzie & Norris Wolfenden



SAMPLES ONLY
PLEASE DO NOT
REMOVE

features:

Trends in randomized controlled
trials in ENT

Laryngeal tuberculosis

Lothrop procedure in chronic frontal
sinus disease

Laryngeal foreign body: unusual
complication of percutaneous
tracheostomy

Edited by Neil Weir
and Guy Kenyon

Assistant Editors
Carol Wengraf,
Richard Ramsden,
David Proops,
Valerie Lund,
Henry Grant,
Andrew Jones,
Michael Rothera,
Martin Bailey,
Liam Flood,
Patrick Bradley,
Nick Jones &
Iain Swan

Emeritus Advisor
in Pathology
Imrich Friedmann

Advisors in Pathology
Brian Manners,
Christopher Milroy &
Lesley Smallman

Advisor in Audiology
Linda Luxon

Advisors in Radiology
Glyn Lloyd &
Peter Phelps

Advisors in Statistics
Anthony Hughes,
Peter Kelly & Janine Gray

Production Editors
Gillian Goldfarb &
Jennifer Almond

V o l
1 1 1
No 7

Laryngoscopes from KARL STORZ:

For all anatomic Situations



Designed in collaborations with leading authorities, KARL STORZ laryngoscopes provide optimal site specific or panoramic visualization for even the most difficult anatomic situations. From neonate to adult, these lightweight stainless steel laryngoscopes have a unique handle for easy introduction. HOPKINS rod-lens telescopes from 0° to 120° will enhance the diagnostic capability of direct laryngoscopy.

KARL STORZ GmbH & Co.
Mittelstraße 8, D-78532 Tuttlingen/Germany
Postfach 230, D-78503 Tuttlingen/Germany
Telegramm: Endoskopie
Telefon: (0 74 61) 70 80, Telex: 762 656 storz d
Telefax: (0 74 61) 70 81 05

KARL STORZ Endoscopy-America, Inc.
600 Corporate Pointe
Culver City, CA 90230-7600, USA
Telephone: (310) 558 1500
(800) 421-0837
Telefax: (310) 410-5530

KARL STORZ Endoscopia Latino-America
815 N. W. 57 Av., Suite No. 480
Miami, FL 33126-2042, USA
Teléfono: (305) 262-89 80
Telefax: (305) 262-89 86

For more information please contact the New UK Office:

KARL STORZ Endoscopy (UK) Ltd
Suite G03 Exchange Tower
1 Harbour Exchange Square
London E14 9GB
Telephone: 0171 537 0137
Telefax: 0171 537 0237

For service & repairs contact the New UK Facility:

KARL STORZ Endoscopy (UK) Ltd
Thomas Wise Place
Dundee DD2 1UB
Telephone: 01382 647500
Telefax: 01382 644999

STORZ
KARL STORZ—ENDOSKOPE

To order by phone please call
+44 (0) 1233 623 131
or Fax to +44 (0) 1233 612345



Subscribe to
The Journal of Laryngology and Otology

Founded in 1887

Volume 111 1997 12 issues ISSN 0022-2151

- Individual £85 (U.S. \$195.50) Institutional £110 (U.S. \$250) Registrars, £45
- Cheque enclosed for (cheques in Sterling drawn on a London bank or US dollars on a US bank)

- Bill me
- Please charge to my

- Mastercard Visa
- Access Eurocard

Card Expiry date.....Signature

Name:

Address:

Postcode:

Tel:..... Fax:.....

Please allow up to 60 days for your order to be processed.

MONEY BACK GUARANTEE
The Journal of Laryngology and Otology will send you a full refund on the unexpired part of your subscription should you decide you do not wish to continue your subscription.

J497

ERA,
standing
d Editor
pr down.
'change
f printed
' section
rd(s) are
width is

To order by phone please call
+44 (0) 1233 623 131
or Fax to +44 (0) 1233 612345



Subscribe to
The Journal of Laryngology and Otology

Founded in 1887

Volume 111 1997 12 issues ISSN 0022-2151

- Individual £85 (U.S. \$195.50) Institutional £110 (U.S. \$250) Registrars, £45
- Cheque enclosed for (cheques in Sterling drawn on a London bank or US dollars on a US bank)

- Bill me
- Please charge to my

- Mastercard Visa
- Access Eurocard

Card Expiry date.....Signature

Name:

Address:

Postcode:

Tel:..... Fax:.....

Please allow up to 60 days for your order to be processed.

MONEY BACK GUARANTEE
The Journal of Laryngology and Otology will send you a full refund on the unexpired part of your subscription should you decide you do not wish to continue your subscription.

J497

or where
ournal of
ould be
ncouver
.33-38.
er of the
Ashford,
authors
es with a
rove the
n at least
returned
ne United
should be
rd, Kent
is. (Those
or mailing

To order by phone please call
+44 (0) 1233 623 131
or Fax to +44 (0) 1233 612345

Forward to your librarian

I recommend that the library subscribes to *The Journal of Laryngology and Otology*

Name

DeptSignature

FOR THE LIBRARIAN

- Please enter our subscription to the JLO
- £110 US\$250.00
- Cheque enclosed for (cheques in Sterling drawn on a London bank or US dollars on a US bank)

- Please charge to my

- Mastercard Visa
- Access Eurocard

Card Expiry date.....Signature

Name:

Address:

Postcode:

Tel:..... Fax:.....

Please allow up to 60 days for your order to be processed.

MONEY BACK GUARANTEE
The Journal of Laryngology and Otology will send you a full refund on the unexpired part of your subscription should you decide you do not wish to continue your subscription.

J497

ity on the
ether it be
herto less
has been
would be
le, a piece
applied to
case now
ity and to
al interest.
onthly or
partment,
o produce
ournal, an
tion. Such
in the rare

Place
Postage
here

The Journal of Laryngology and Otology
Headley Brothers Limited
The Invicta Press
Queens Road
ASHFORD,
Kent TN24 8HH
UNITED KINGDOM

Place
Postage
here

The Journal of Laryngology and Otology
Headley Brothers Limited
The Invicta Press
Queens Road
ASHFORD,
Kent TN24 8HH
UNITED KINGDOM

Place
Postage
here

The Journal of Laryngology and Otology
Headley Brothers Limited
The Invicta Press
Queens Road
ASHFORD,
Kent TN24 8HH
UNITED KINGDOM



The Journal of Laryngology and Otology

(Founded in 1887 by MORELL MACKENZIE and NORRIS WOLFENDEN)

Edited by NEIL WEIR and GUY KENYON

Assistant Editors CAROL WENGRAF, RICHARD RAMSDEN, DAVID PROOPS, VALERIE LUND, HENRY GRANT, ANDREW JONES, MICHAEL ROTHERA, MARTIN BAILEY, LIAM FLOOD, PATRICK BRADLEY, NICK JONES & IAIN SWAN

Production Editors GILLIAN GOLDFARB & JENNIFER ALMOND

INSTRUCTIONS FOR AUTHORS

1. Original articles which have not been published elsewhere are invited and should be sent to the Editor. They are considered for publication on the understanding that they are contributed to this *Journal* solely. Reproduction elsewhere in whole or in part, is not permitted without the previous written consent of the Author and Editor and the customary acknowledgement must be made. Normally an original main article should not exceed 7500 words.

Longer articles or theses will be considered for publication as *Supplements*, at the expense of the authors or their employing authorities.

2. Manuscripts should be **typewritten in duplicate** on one side of the paper only (A4 297 x 210 mm) and double spaced, with wide margins.

Begin each component on a new page in the following sequence: title page, abstract, text, acknowledgements, references, tables and legends.

(a) **Title page**—Titles should be short with names of the authors, higher degrees only. Details of the departments in which the authors work should be put lower down. An address for correspondence should be supplied together with the author who should receive this; this will ultimately appear beneath the list of references. Any change of address should be notified. If the paper was presented at a meeting, the details of this must be given and will be inserted at the bottom of the first page of printed script.

(b) **Abstract**—This should contain not more than 150 words and include a statement of the problem, the method of study, results and conclusions; a 'summary' section should **not** be included in the main manuscript. **No paper will be accepted without an abstract.**

(c) **Key Words**—Only those appearing as Medical Subject Headings (MeSH) in the supplement to the *Index Medicus* may be used; where no appropriate word(s) are listed those dictated by common sense/usage should be supplied.

(d) **Text**—Suggested outline—(1) introduction, (2) materials and methods, (3) results, (4) discussion, (5) conclusion.

(e) **Tables** are adjuncts to the text and should not repeat material already presented.

(f) **Illustrations**—Two sets of illustrations, one with each copy of the manuscript, must be submitted and all authors should remember that the single column width is 80mm. One set of illustrations should, therefore, not exceed this width and they should ensure that the essential features are illustrated within this dimension.

Coloured illustrations will be charged to authors, unless a special grant is authorized by the Editor.

Written permission from the publisher must be provided to the *Journal* in order to republish material with copyright elsewhere and also from the senior author where necessary. Consent to be obtained from a patient if a photograph of their face is to be reproduced.

(g) **Measurements** must be in metric units, with *Système Internationale* (SI) equivalents given in parentheses.

(h) **References**—For *Journal* articles, The Harvard system of recording references should be used, e.g. Green, C. and Brown, D. (1951) The tonsil problem. *Journal of Laryngology and Otology* 65: 33–38. A paper written by more than two authors should be abbreviated in the text, e.g. Green *et al.* (1951), but *all* the authors should be given in the list of references. The titles of all *Journals* should be given without abbreviation. **References should be listed in alphabetical order**; use of the Vancouver system will **not** be accepted.

For single-author books, the following style should be used: Green, C. (1951) *The tonsil problem*, 2nd Edition. vol. 1, Headley Brothers Ltd., Ashford, Kent, pp 33–38.

For papers in multi-books with one or more editors, the reference should include the title of the chapter and the names of the editors, together with the number of the edition as e.g. Brown, D. (1951) Examination of the ear. In *Diseases of the Ear, Nose and Throat*. 2nd Edition. (White, A., Black, B., eds.), Headley Brothers Ltd., Ashford, Kent, pp 33–38.

It is most important that authors should verify personally the accuracy of every reference before submitting a paper for publication. The names of authors cited in the References should be given in alphabetical order.

(i) **Drugs**—The proper names of drugs must be used. One reference can be made to the brand name if it is felt to be important to the study.

(j) **Financial disclosures**—In the submission letter to the Editor, the authors must list all affiliations with or financial involvement in, organizations or entities with a direct financial interest in the subject matter or material of the research discussed in the manuscript.

(k) **Declaration**. Each manuscript must be accompanied by a letter of declaration to be signed by each author to confirm that they have seen, read and approve the contribution bearing their name.

(l) **Rejections**—All manuscripts which are rejected will no longer be returned to the authors. Those submitting papers should, therefore, ensure that they retain at least one copy and the reference numbers, if any, of the illustrations. The only exception to this will be those manuscripts with colour illustrations which will be returned *automatically* by Surface Mail.

(m) **Facsimile (FAX)**—All authors should send a Facsimile number whenever possible to speed communication; this particularly applies to those outside the United Kingdom. Manuscripts with no visual illustrations (X-rays/pathology) may be sent by facsimile.

3. Page proofs are sent to authors for corrections, which should be kept to a minimum; they must be clearly marked, and no extra matter added. Proofs should be returned within 5 days.

4. **Orders for reprints must be sent when returning page proofs, and for this purpose special forms are supplied.**

5. Editorial communications may be addressed to **The Editor, Journal of Laryngology and Otology, c/o Headley Brothers Ltd., The Invicta Press, Ashford, Kent TN24 8HH, or sent by FAX (01483 451874).**

6. **The annual subscription is £110.00 Institutions & Libraries US\$250.00; £85.00 Individuals US\$195.50; £45.00 Registrars, Residents and Interns.** (Those in training should submit a certificate from The Head of the Department giving details of their appointment; those who qualify must supply their *home* address for mailing direct). Claims to be made for missing issues within 6 months of each publication date.

7. Single copies of current or back numbers (when available) will be on sale at £12.00 each (including postage).

8. **SUPPLEMENTS** published at 'irregular' intervals with subscription, available separately on request.

9. All subscriptions, advertising and business communications should be sent to the publishers, or subscription agents.

Instructions for Occasional Articles

Review Articles. Articles of this type, preferably not exceeding 3,000 words will be considered but the author(s) are expected to be a recognized authority on the topic and have carried out work of their own in the relevant field.

Historical Articles. Articles of this type are generally encouraged, but it is obvious that they have to provide some new information or interpretation, whether it be about a well-known person or for example an instrument associated with him, but those from within a Hospital's own department who have made a hitherto less well-known contribution would be welcome.

Audit Articles. Articles should be of general audit interest—not specifically departmental. It should always be demonstrated that the 'audit cycle' has been completed.

'Silence in Court'. Articles on medicolegal topics are welcome but a preliminary letter written beforehand is requested to ensure that the contribution would be appropriate.

Short Communications. This feature will be used on an occasional basis. Examples of material suitable for inclusion under this title would be, for example, a piece of work which was of clinical interest but had failed to produce findings which were of statistical significance; where an investigative technique has been applied to an allied field, not warranting a further in-depth description of its earlier application and methodology.

Radiology in Focus. Short reports on cases in which the radiology has been crucial in the making of the diagnosis or the management of a particular case now appear on a monthly or bimonthly basis. This spot is to encourage clinicians and radiologists to produce material of particular interest in the specialty and to encourage co-operation in this field. Only presentations with first-class illustrations can be accepted and these must emphasize a problem of unusual clinical interest.

Pathology in Focus. Articles which are of pathological interest with particular emphasis on the way the diagnosis was achieved now appear on a monthly or bimonthly basis. It is hoped that clinicians will involve their pathologists in these reports, and all illustrations must be of first-class quality. Where a department, particularly those overseas, may not have such specialized facilities. It may be possible, if a block or several unstained sections are provided for our Adviser to produce or supplement the illustration submitted. Only contributions of particular pathological interest will be accepted.

Oncology in Focus. This new feature is for papers concerned with oncological treatment and investigation.

Letters to the Editor. This feature has been re-introduced to give those who wish to comment about a paper previously published within the *Journal*, an opportunity to express their views. Wherever possible, the original author is asked to add his further comment, thereby adding to the value of the contribution. Such letters should be sent as soon as possible after publication of each month's issue of the *Journal* in the hope of including them early thereafter.

'Mini-papers', such as those which appear in the *British Medical Journal*, *Lancet*, or *New England Journal of Medicine*, will not be acceptable except on the rare occasion that they bring information of immediate interest to the reader.

HEADLEY BROTHERS LTD, THE INVICTA PRESS, ASHFORD, KENT

© *Journal of Laryngology and Otology Ltd.*, 1997 ISSN 0022-2151

Periodicals Postage Paid at Rahway N.J.

Postmaster: Send address corrections to *The Journal of Laryngology and Otology*, c/o Mercury

Airfreight International Ltd. Inc., 2323 Randolph Avenue, Avenel, N.J. 07001. Frequency of Publication: Monthly.



The University of Oxford



The Oxford-Bath Clinical ENT Course

**Level 2
for Calman and
European Specialist trainees
years 3 to 5**

3-6 November 1997

Course Organisers:

**Mr Martin Burton - The Radcliffe Infirmary, Oxford
Mr Richard Canter - The Royal United Hospital, Bath**

For further information please contact:

Venetia Hill-Perkins at the Centre for Continuing Professional
Development, OUDCE, 1 Wellington Square, Oxford OX1 2JA
Tel: 01865 280347/270318 Fax: 01865 270386
E-mail: venetia.hill-perkins@conted.ox.ac.uk

*We are an institution exempt under the
Charities Act 1993 Schedule 2.B*



NINTH FESS COURSE

AND

KTP/532 LASER WORKSHOP

CME Accredited by BAO-HNS (23 Points)

Approved by European Laser Association (ELA)

Tyrone County Hospital, Omagh, N. Ireland

16th-19th September 1997

A two day course in Functional Endoscopic Sinus Surgery with hands on nose-sinus endoscopy will instruct the participant with an in depth account of both morbid and endoscopic anatomy, pathophysiology, diagnosis including imaging techniques and surgical approach with post operative care. Complications and how to prevent them will be discussed in detail.

The course is aided by profuse illustrations, video presentations and live surgery.

The two day KTP/532 workshop aims to instruct the surgeons both basic concepts and the varied applications in E.N.T. & Head and Neck surgery including tissue interactions of various lasers. The latest techniques with KTP Laser. Tonsillectomy, Functional Endoscopic Sinus Surgery, UP3 and microlaryngeal surgery are discussed by didactic lectures and video presentations.

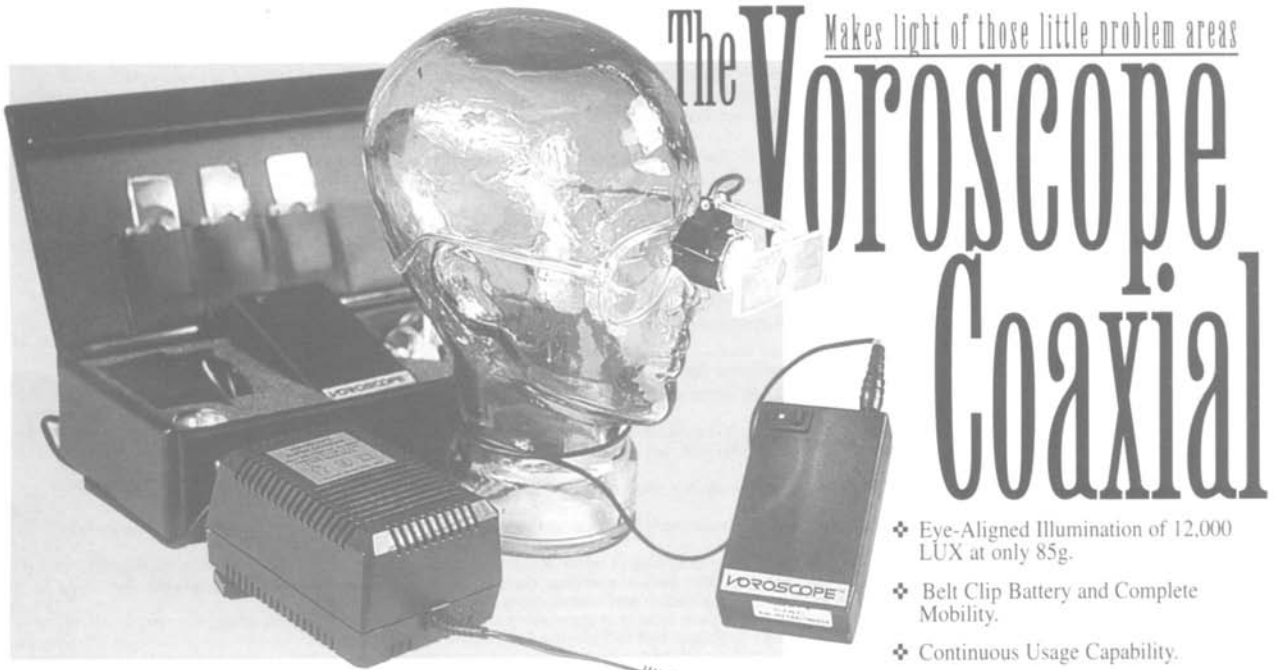
Live Tonsillectomy surgery will be performed with KTP/532 laser on several patients. The delegates will have 'Hands on' training with KTP/532 laser system with various animal tissues and Pig's larynx with micromanipulator.

The course has limited number of places and these will be allocated on a first come first served basis.

Course Director: S. K. Kaluskar, M.S., F.R.C.S., D.L.O.(Eng.)

**Further information from: Mrs. Martina Corrigan, Tyrone County
Hospital, Omagh, Co. Tyrone, N. Ireland.**

Telephone: (01662) 245211 Ext 2100, Fax: (01662) 246293.



Makes light of those little problem areas
**The Voroscope
Coaxial**

GARTH JESSAMINE HEALTH CARE

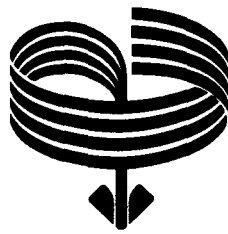
Unit 5, The Courtyard, Matthewsgreen Farm,
Matthewsgreen Road, Wokingham,
Berkshire, RG41 1JX

❖ Availability in
Either Black or White.

❖ Ideal for use in Theatre, Clinic, Ward
Consulting Room, Emergency and
Domiciliary Call

- ❖ Eye-Aligned Illumination of 12,000 LUX at only 85g.
- ❖ Belt Clip Battery and Complete Mobility.
- ❖ Continuous Usage Capability.
- ❖ Variable Magnification of X1.5, X1.75 and X2.25.
- ❖ Eye Strain and Fatigue Relief.
- ❖ Low Cost and Convenience.
- ❖ Prescription Lenses if Required.

Telephone: (01734) 786916 Fax: (01734) 774064



Brånemark System®

*“It’s simply a question
of quality of life”*

Bone Anchored Hearing Aid



BAHA Classic 300

The updated BAHA has **three main improvements**:

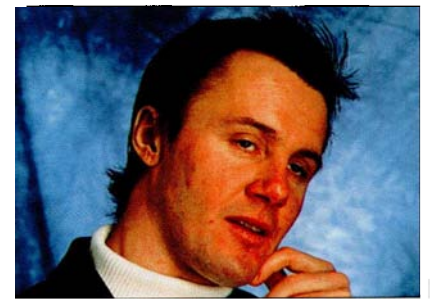
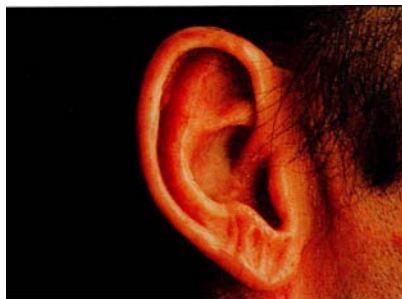
The first is the development of a **continuous base tone control** which has flexibility to cover the frequency response range of the four previous models. The second improvement is the adoption of ABS plastic for the hearing aid casing which offers a more **aesthetic moulded design**, greater strength and colour stability.

THE BAHA CLASSIC 300 ALSO COMES WITH A **FIVE YEAR WARRANTY** (UK Only).

Indications for the BAHA

- **Chronic Otitis Media** - with conductive or mixed hearing loss where the use of air conduction devices is contraindicated.
- **Congenital Malformation** - of the external or middle ear where an air conduction hearing aid cannot be used or is contraindicated.
- **Otosclerosis** - in some cases.

Craniofacial Rehabilitation



...a reliably retained prosthesis

For further information contact:

Nobel Biocare U.K. Limited
Nobel House, Grand Union Office Park
Packet Boat Lane, Uxbridge UB8 2GH, England
Tel: +44 (0)1895 430650 Fax: +44 (0)1895 430636

<http://www.jlo.co.uk/nobel.htm>

Nobel Biocare Norden AB
Box 5211, S-402 24
Gothenburg, Sweden
Tel: +46 (0) 31 35 49 00 Fax: +46 (0) 31 40 69 15

The difference is years of experience

 **Nobel Biocare**



UNIVERSITY OF CAMBRIDGE - DEPARTMENT OF ANATOMY
WEST SUFFOLK HOSPITAL NHS TRUST
UNITED STATES AIRFORCE HOSPITAL - LAKENHEATH

ENDOSCOPIC SINUS ANATOMY AND SURGERY INTENSIVE DISSECTION COURSE

16th-19th DECEMBER 1997

This course is aimed at surgical trainees and consultants wishing to obtain the basic knowledge and skills necessary to undertake endoscopic sinus surgery. Those experienced in sinus endoscopy will also find the course of value

- cadaver dissection with "before and after" CT documentation
- 2:1 delegate to trainer ratio
- live surgery including powered instrumentation
- basic and advanced techniques
- BAO-HNS accreditation for 24 hours of CME

Invited faculty:

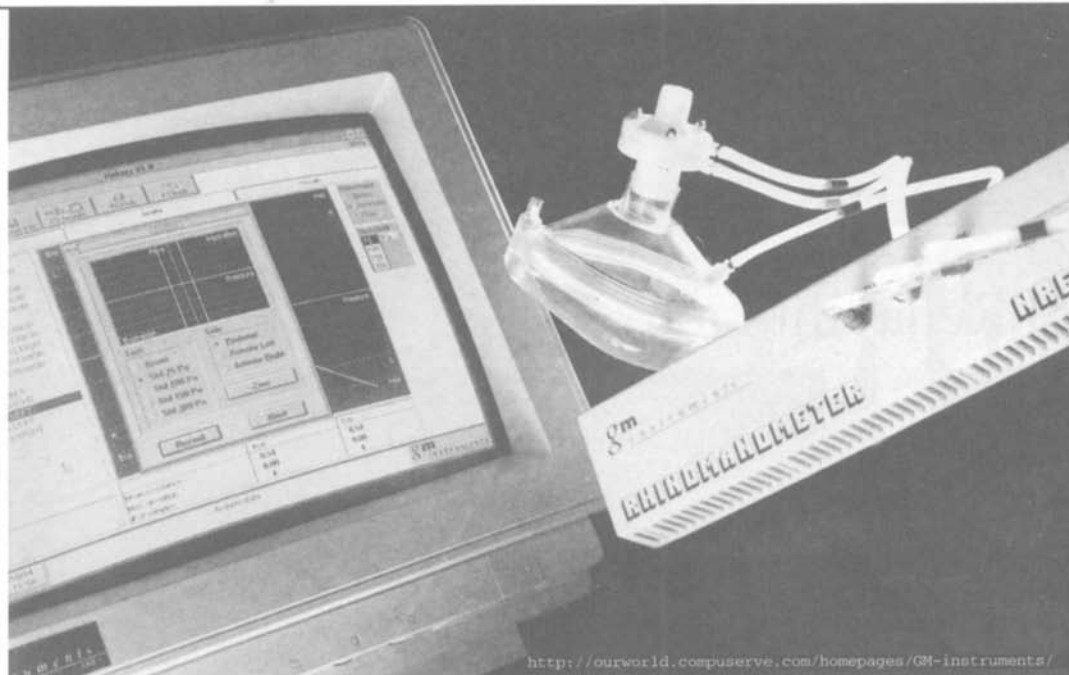
Michael Hawke (Canada), Theodore Banke (USA), Eric Mair (USA),
Kathryn Evans, David Gatland, Bari Logan, Bob Whittaker,
Robin Youngs, Matthew Yung

Course fee: £600 (to include all meals)

Number of delegates limited to 14

Further details from:

Postgraduate Medical Centre, West Suffolk Hospital NHS Trust, Hardwick Lane, Bury St Edmunds,
Suffolk IP33 2QZ. Tel: 01284 713342. Fax: 01284 712598



<http://ourworld.compuserve.com/homepages/GM-instruments/>

For information on the latest developments in

- ACOUSTIC RHINOMETRY
- RHINOMANOMETRY
- CALIBRATION EQUIPMENT AND ACCESSORIES

contact **Eric Greig of G M Instruments**

Unit 6, Ashgrove Road,
Kilwinning, KA13 6PU,
Scotland, UK
tel 01294 554664
fax 01294 551154
e-mail 100522.3225@compuserve.com

gm instruments Ltd

Tel: 0191 565 6256
Fax: 0191 569 9202



ENT Department
Woodford Williams Wing
Sunderland Royal Hospital
Kayll Road
Sunderland SR4 7TP

ADVANCED SYMPOSIUM AND WORKSHOP ON SURGICAL VOICE RESTORATION FOLLOWING LARYNGECTOMY

Professor E. Blom • Mr P. Samuel • Mr F. Stafford

Venue: Van Mildert College, Durham

19th and 20th September 1997

The Department of Head and Neck Surgery, City Hospital, Sunderland presents an intensive and comprehensive two day workshop on surgical voice restoration led by Professor Eric Blom, the world's leading exponent of valve voice restoration. Lectures, seminars and demonstrations on all aspects of surgical voice restoration and valve care will be presented. There will be an option to attend either or both of the days which comprise one day theory and one day 'hands-on'. This course is suitable for Otolaryngologists / Head and Neck Surgeons, Speech Therapists and Nurses involved in the management and care of laryngectomy patients with or without an established voice restoration service.

Detailed programmes are available on request.

Course fee (including course dinner):

	2 Day	1 Day
Surgeon / Speech Therapist team	£275.00	£200.00
Surgeon	£250.00	£150.00
Speech Therapist	£95.00	£60.00



Temporal Bone Surgical Dissection Course

presented by

GEORGIA EAR INSTITUTE

- Designed for practicing otolaryngologists and senior residents in training
- Includes lectures and temporal bone dissection
- All specimens and instruments provided

Courses - 1997

October 20-24

Courses - 1998

January 19-23, May 18-22,

September 14-18, November 16-20

Fee: Physicians - \$800 • Residents - \$350

CME Credits: 50 Hours

COURSE DIRECTORS:

M. MILES GOLDSMITH, MD, FACS

MALCOLM D. GRAHAM, MD, FACS

For further information, contact:

Shirley Johnson, RN, MSA • Medical Education Department

P.O. Box 23089 • Savannah, Georgia 31403-3089

912-350-7365 • Fax 912-350-8998

MEMORIAL
MEDICAL CENTER

SAVANNAH, GEORGIA USA

B.A.P.O.

British Association for
Paediatric Otorhinolaryngology

ANNUAL MEETING

Friday 10 October 1997

Nottingham

Cost: £25 (to include £15 to Fellowship Fund)

Meeting and Membership enquiries:

David Albert

234 Great Portland Street, London W1N 5PH

Telephone: 0171-390 8300

Abstracts to:

Kevin Gibbin

Queens Medical Centre, Nottingham NG7 2UH

Telephone: 0115-970 9275

Deadline: 31 July

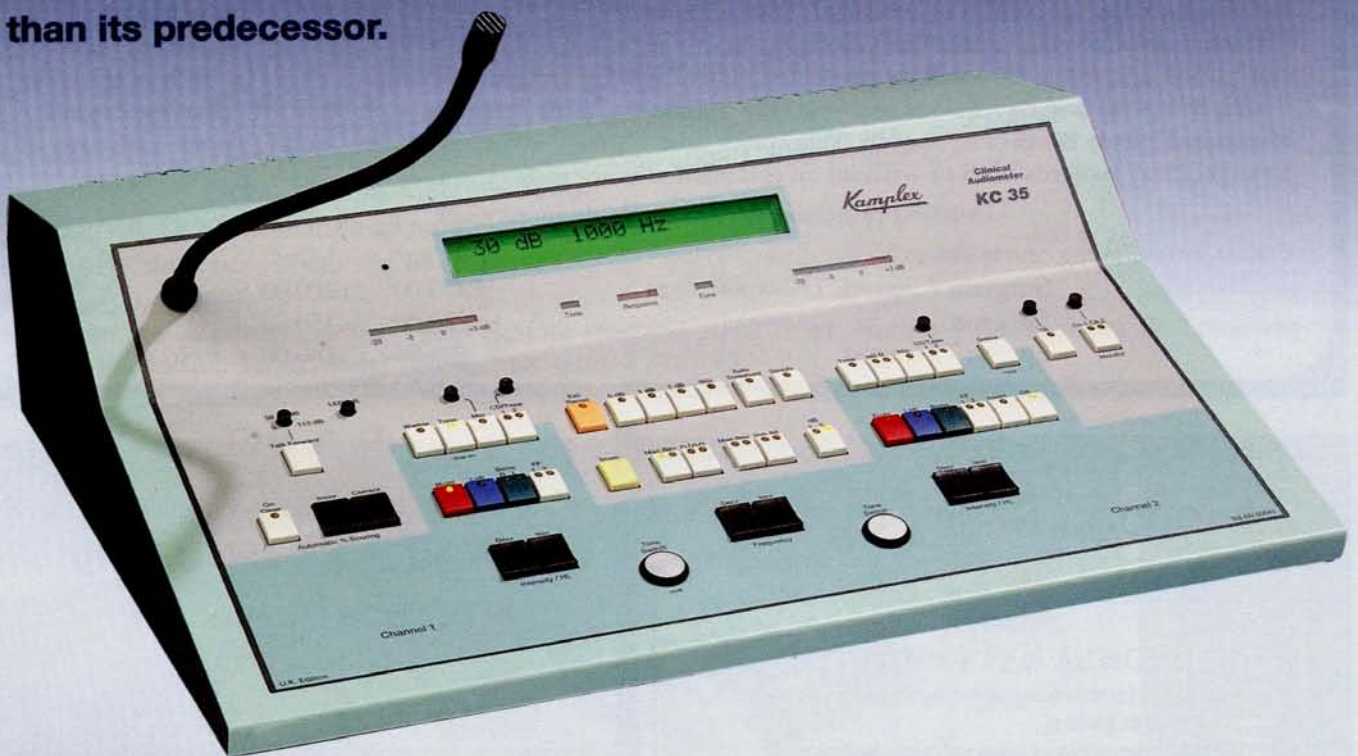
Format: 1 side A4 (12 point)



Kamplex **KC35** **Clinical Audiometer**

P.C. Werth continue the Kamplex 'K' Series with the all new **KC35** Clinical Audiometer specifically designed and manufactured for the UK.

This 'benchmark' audiometer combines the renowned Kamplex AC30 facilities with new technology and contemporary appearance, whilst fully maintaining the Kamplex ease of operation. Larger display, improved monitoring facilities, combined with easily adjustable front panel controls ensure the **KC35** will be even more popular than its predecessor.



Features include:

- Large LCD display
- Front panel level controls
- Optional free-field amplifiers
- SISI test
- TT decay test
- Threshold storage
- RS232 computer interface
- Printer output
- NOAH compatible
- Full clinical facilities
- Auto threshold
- User configuration via software

FOR A PRIORITY DEMONSTRATION, PLEASE CONTACT OUR INSTRUMENT DIVISION ON 0181-675 5157

Exclusively from
P.C.WERTH LTD

Audiology House, 45 Nightingale Lane, London SW12 8SP
Telephone: (0181) 675 5151 Fax: (0181) 675 7577