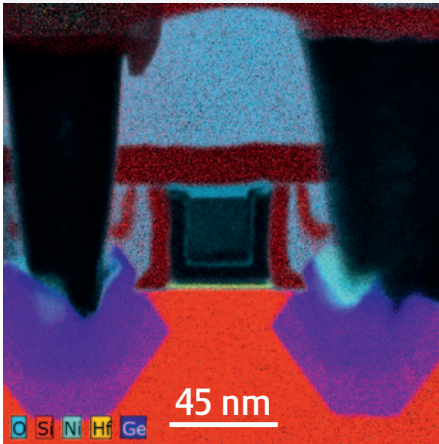


ChemiSTEM™ technology

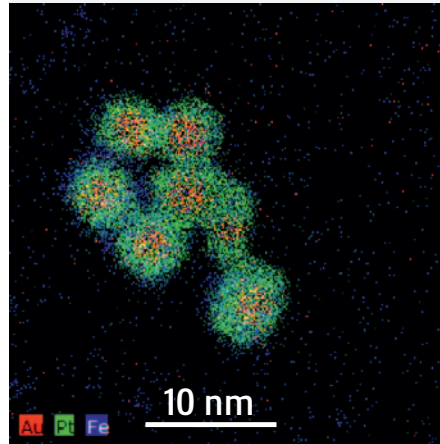
A revolution in EDX analytics

Large map, all elements



45 nm PMOS structure
600 x 600 pixels
Drift correction applied

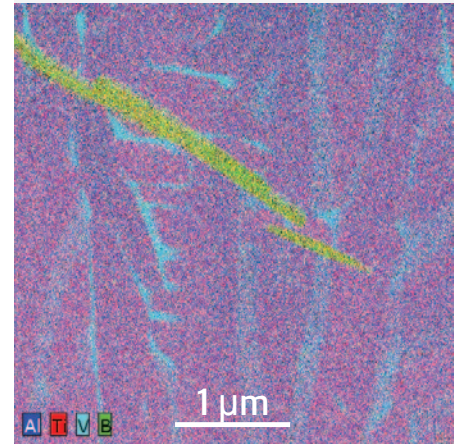
High sensitivity



Au/Pt(Fe) core/shell particles < 5 nm
300 x 300 pixels recorded in < 4 min

Sample courtesy of C. Wang, V. Stamenkovic,
N. Markovic and N.J. Zaluzec, Argonne
National Laboratory

Light element detection



Boron distribution in TiB/TiAl
512 x 512 pixels recorded in < 5 min
100 μsec dwell time; multiple frames

Sample courtesy of
Ohio State University



Tecnai Osiris™

ChemiSTEM™ technology, higher beam current and revolutionary X-ray detection capability:

- Largest solid angle for EDX detection: 0.9 sr
- Ultimate speed: elemental maps in minutes
- Highest sensitivity for light elements and low concentrations

Learn more at FEI.com/research



Flash & Go™

ARM200F TEM with Cold FEG

GaN [211] HAADF at 200 kV

ABF, HAADF and EELS

$\text{Ca}_2\text{Co}_4\text{O}_9$ (110)

Data courtesy of Dr. Robert Klie,
University of Illinois at Chicago

Visualization of hydrogen atomic columns in YH_2 by
ABF imaging (Y = red, H = green) Data courtesy of
Ryo Ishikawa and Dr. Eiji Abe (The University of Tokyo)

Unrivalled flash speed
Unrivalled raw data

Visit www.jeolusa.com/FlashandGo



JEOL

Another
Extreme Imaging
Solution

Global Solutions Provider for Advanced Technology
www.jeolusa.com • salesinfo@jeol.com
978-535-5900



Atomic Resolution S/TEM