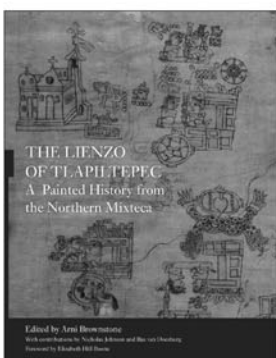


### THE CH'OL MAYA OF CHIAPAS

Edited by Karen Bassie-Sweet With Robert M. Laughlin,  
Nicholas A. Hopkins, and Andrés Brizuela Casimir  
\$45.00 HARDCOVER · 288 PAGES · 27 B&W ILLUS., 11 MAPS

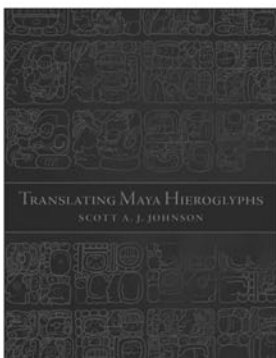
The Ch'ol Maya who live in the western Mexican state of Chiapas are direct descendants of the Maya of the Classic Period. Exploring their history and culture, volume editor Karen Bassie-Sweet and the other authors assembled here uncover continuity between contemporary Maya rituals and beliefs and their ancient counterparts.



### THE LIENZO OF TLAPILTEPEC A Painted History from the Northern Mixteca

Edited by Arni Brownstone  
With contributions by Nicholas Johnson and Bas van Doesburg  
\$50.00 HARDCOVER · \$34.95 PAPERBACK  
216 PAGES · 98 COLOR ILLUS.

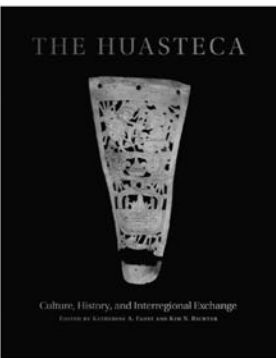
For centuries, indigenous rulers of Mesoamerica commissioned elaborate pictorial histories to maintain their claims to power, land, and privilege—a practice they continued under Spanish authority after the conquest. The Lienzo of Tlapiltepec is one such history. An intricate pictographic document on cotton cloth, the lienzo was produced by an Indian painter-scribe of great skill during the sixteenth century in the northern Mixteca.



### TRANSLATING MAYA HIEROGLYPHS

By Scott A. J. Johnson  
\$34.95 HARDCOVER · \$26.95 PAPERBACK  
408 PAGES · 69 B&W ILLUS.

The only comprehensive introduction designed specifically for those new to the study, *Translating Maya Hieroglyphs* uses a hands-on, step-by-step approach to teach readers how to translate ancient Maya glyphs. Maya hieroglyphic writing may seem impossibly opaque to beginning students, but scholar Scott A. J. Johnson presents an engaging, easy-to-follow textbook.



### THE HUASTECA Culture, History, and Interregional Exchange

Edited by Katherine A. Faust and Kim N. Richter  
\$55.00 HARDCOVER · 256 PAGES · 190 B&W ILLUS.

In *The Huasteca: Culture, History, and Interregional Exchange*, a range of authorities on art, history, archaeology, and cultural anthropology bring long-overdue attention to the Gulf Coast of Mexico's rich contributions to the pre-Columbian world. They also assess, to a lesser degree, how the Huasteca fared from colonial times to the present.



UNIVERSITY OF  
OKLAHOMA PRESS

2800 VENTURE DRIVE · NORMAN, OK 73069

TEL 800 627 7377 · OUPRESS.COM



THE UNIVERSITY OF OKLAHOMA IS AN EQUAL OPPORTUNITY INSTITUTION. WWW.OU.EDU/EOO

# Cambridge Archaeological Journal

Published for the McDonald Institute for Archaeological  
Research

## Editor

John Robb, University of Cambridge, UK

The *Cambridge Archaeological Journal* is one of the leading international journals for symbolic, social and cognitive archaeology. It provides a forum for innovative, descriptive and theoretical archaeological research. Specific topics span all archaeological ideas, regions and periods. In addition to major articles and shorter notes, the Cambridge Archaeological Journal includes book reviews and review features on significant recent books. The Journal has a distinguished editorial board including scholars of international repute.

## Price information

is available at: <http://journals.cambridge.org/caj>

## Free email alerts

Keep up-to-date with new material – sign up at  
<http://journals.cambridge.org/caj-alerts>



**Cambridge Archaeological Journal**  
is available online at:  
<http://journals.cambridge.org/caj>

## To subscribe contact Customer Services

### in Cambridge:

Phone +44 (0)1223 326070

Fax +44 (0)1223 325150

Email [journals@cambridge.org](mailto:journals@cambridge.org)

### in New York:

Phone +1 (845) 353 7500

Fax +1 (845) 353 4141

Email

[subscriptions\\_newyork@cambridge.org](mailto:subscriptions_newyork@cambridge.org)

For free online content visit:

<http://journals.cambridge.org/caj>



## Instructions for Contributors

*Ancient Mesoamerica* will publish primarily in English, but will also feature contributions in Spanish. All papers will have Spanish (or English) summaries as a regular feature to enhance scholarly communication. When preparing your contribution, please remember that *Ancient Mesoamerica* unifies several different fields from archaeology to ethnohistory, art history and beyond. We also wish to reach nonspecialist readers. While some degree of technical language is often proper and necessary, jargon can always be avoided. Therefore, authors should strive for clear, lucid prose. The Editors will gladly discuss topics or contents of manuscripts prior to submission.

### Manuscript Submission

Doctoral candidates as well as established scholars are encouraged to submit to *Ancient Mesoamerica*. Submissions from doctoral candidates must be accompanied by a letter of commendation from their project director or dissertation supervisor. As of May 1, 2007, *Ancient Mesoamerica* no longer accepts hardcopy submissions. All submissions should be emailed to the Editors at [ancientmeso@gmail.com](mailto:ancientmeso@gmail.com), and should consist of the following: a reading copy of the paper attached as a *single* PDF (Portable Document Format) file—to include abstract, manuscript, figures, tables, and bibliography—of *no more than* 3 MB in size. The body text of the email should contain the name and preferred email address of the corresponding author; the names of all co-authors, the title of the paper, an abstract, and a note of transmittal stating that the work has not been published elsewhere, in whole or in part, nor is it under consideration for publication elsewhere. An abstract of 150 words or less and a longer summary (1–2 double-spaced pages) of the paper in Spanish should be included. We do not permit the use of footnotes and endnotes except in very rare instances. Critical information should be included in the text. The order of manuscript elements should be as follows: title page, abstract, main text, Spanish summary, acknowledgments, references, tables, and figures. Tables and figures should be numbered consecutively using Arabic numerals. Spanish *resumenes* not written in fluent, grammatical Spanish will be returned to the author for corrections and will delay publication. Alternatively, the AM editorial staff will undertake corrections, and authors will be charged at the rate of \$1.00/word or \$100 flat rate per summary, whichever is less.

### Peer Review Procedures

Each contribution will be reviewed by at least three, and sometimes as many as five, outside readers who will make recommendations to the Editors concerning revision of the manuscript, acceptance or rejection. Reviewers may choose to remain anonymous; in any case, all comments will be passed on to the authors.

### Editorial Style

In general, follow *American Antiquity* style. The *SAA Style Guide* can be downloaded from <http://www.saa.org/Publications/StyleGuide/styFrame.html>. The treatment of accents differs from that of the *SAA Style Guide* in that *Ancient Mesoamerica* uses accents only for names and place names of European origin, e.g. *Monte Albán*, *El Baúl*, but *Teotihuacan*, *Mayapan*. However, quoted and cited material should reflect the spellings in the original source (see reference to the Johnston paper in the next section) and personal names should, of course, follow accepted spelling. Contributors are advised to peruse published volumes of the journal before submission to familiarize themselves with the style and format of the journal, including the treatment of subheadings, captions, and tables.

### Citation and Reference Style

References should generally follow *American Antiquity* style (see above). Please note that “in press” or “in preparation” references should not be used. A date should be provided for all references, and references

should clearly state where readers may obtain copies of unpublished manuscripts. Authors’ full first names, rather than initials, should be provided (note that this differs from *American Antiquity* style). Page numbers should be provided for all citations of specific data. Sample references:

Diehl, Richard A.

2004 *The Olmecs: America’s First Civilization*. Thames and Hudson, New York.

LaPorte, Juan Pedro

2003 Architectural Aspects of Interaction between Tikal and Teotihuacan in the Early Classic Period. In *The Maya and Teotihuacan: Interpreting Early Classic Interaction*, edited by Geoffrey E. Braswell, pp. 199–216. University of Texas Press, Austin.

Johnston, Kevin J.

2004 The “Invisible” Maya: Minimally Mounded Residential Settlement at Itzán, Petén, Guatemala. *Latin American Antiquity* 15:145–175.

Peraza Lope, Carlos, Marilyn A. Masson, Timothy S. Hare, and Pedro Candelario Delgado Kú

2006 The Chronology of Mayapan: New Radiocarbon Evidence. *Ancient Mesoamerica* 17(2):153–175.

Walker, William H., and Gaea MaGahee

2001 Animated Waters: The Ritualized Life History of Wells, Reservoirs, and Springs at Casas Grandes, Chihuahua. Paper presented at the 66th Annual Meeting of the Society for American Archaeology, New Orleans.

Smith, Michael E.

1988 *Long-Distance Trade under the Aztec Empire: The Archaeological Evidence*. Unpublished manuscript on file, Department of Sociology and Anthropology, Loyola University of Chicago.

### Final Submission

After a contribution is accepted, the Editors will require a manuscript file in a common digital format, such as Rich Text Format (RTF), Microsoft Word, or WordPerfect. Best practices for the production of digital manuscripts should be followed. Illustration files should be provided in ready-to-print, high-quality digital formats, according to the following basic guidelines:

Line drawings (including stippled drawings):

1200 dots per inch (dpi), bitmap (1-bit) color mode, TIF format

Alternative for line drawings:

Vector-based images may be submitted in Illustrator, EPS, or PDF format

Halftone drawings and photographs:

300 dpi, 8-bit grayscale color mode, TIF format

Dots per inch (dpi) values given are for images at final printed size. In most cases, the size of image files will require that manuscript and images be written to CD or DVD media for final submission. Authors who prefer to submit non-electronic, camera-ready artwork should contact the editors for further information.

### Copyright and Offprints Policy

Contributors must complete the Transfer of Copyright Agreement form, available from the Editors, before their paper can be transmitted for production. The lead author of each article will receive a free pdf of their article, with the opportunity to purchase offprints and complete copies of the issue at favorable rates.

# Ancient Mesoamerica

Volume 26, Number 1

Spring 2015

---

## ARTICLES

Pursuing Passions	<i>Frances F. Berdan</i>	1
Early Formative Anthropomorphic Figurines from La Joya, Southern Veracruz, Mexico	<i>Philip J. Arnold III and Billie J. A. Follensbee</i>	13
A New Analysis of the Gender Attribution of the "Great Goddess" of Teotihuacan	<i>Elisa C. Mandell</i>	29
Indigenous Coats of Arms in Títulos Primordiales and Techialoyan Códices: Nahua Corporate Heraldry in the Lienzos de Chiepetlan, Guerrero, Mexico	<i>Gerardo Gutiérrez</i>	51
The Aztec Atlatl in the British Museum	<i>John C. Whittaker</i>	69
Return to Moxviquil: Form and Function in a Small Maya City	<i>Elizabeth H. Paris, Eric Taladoire, and Thomas A. Lee Whiting</i>	81
The Roots of Sotuta: Dzitas Slate as a Yucatecan Tradition	<i>Scott A. J. Johnson</i>	113

## SPECIAL SECTION: TAKING STOCK OF BASIN OF MEXICO ARCHAEOLOGY IN THE EARLY TWENTY-FIRST CENTURY

Introduction	<i>William R. Fowler, Ian G. Robertson, and L. J. Gorenflo</i>	127
The Making of the Map: The Origin and Lessons of the Teotihuacan Mapping Project	<i>René Millon and Jeffrey H. Altschul</i>	135
The Teotihuacan Mapping Project: Experiences with Data Files, Big Questions, and Some Research Priorities for Teotihuacan	<i>George L. Cowgill</i>	153
Investigating Teotihuacan through <i>TMP</i> Surface Collections and Observations	<i>Ian G. Robertson</i>	163
An Appraisal of Regional Surveys in the Basin of Mexico, 1960–1975	<i>Jeffrey R. Parsons</i>	183
Compilation and Analysis of Pre-Columbian Settlement Data in the Basin of Mexico	<i>L. J. Gorenflo</i>	197

---

**Cambridge Journals Online**

For further information about this journal please  
go to the journal website at:

[journals.cambridge.org/atm](https://journals.cambridge.org/atm)

**CAMBRIDGE**  
UNIVERSITY PRESS