

LIST OF ATTENDEES

Yasuhiro Abe, Nihon Tsusinki, 4005, Nakatsu-Sakuradai, Aikawa-cho, Aiko-gun, Kanagawa 243-03, JAPAN

Kenji Akabane, Information & Operation System, Matsusho Gakuen Junior College, 2117-3, Niimura, Matsumoto, Nagano 390-12, JAPAN

Lorne Avery, Herzberg Institute of Astrophysics, 100 Sussex Dr., Ottawa Ont. K1A 0R6, CANADA

Lars B. Bååth, Onsala Space Observatory, S-439 92 Onsala, SWEDEN

Peter Barnes, Harvard-Smithsonian Center for Astrophysics, MS 42, 60 Garden Street, Cambridge, MA 02138, USA

John Biegging, Steward Observatory, University of Arizona, Tucson, AZ 85721, USA

Roy Booth, Onsala Space Observatory, S-439 92 Onsala, SWEDEN

Robert Brown, NRAO, P.O. Box 0, Socorro, NM 87801, USA

Murray Cameron, Max-Planck-Institut für Extraterrestrische Physik, Giessenbachstr., D-W8046 Garching, GERMANY

John Carlstrom, Astronomy Dept., Caltech MS 105-24, Pasadena, CA 91125, USA

Jose Cernicharo, Centro Astronomico de Yebes, Apartado 148, 19080 Guadalajara., SPAIN

Yoshihiro Chikada, Nobeyama Radio Observatory, Nobeyama, Minamimaki, Minamisaku, Nagano 384-13, JAPAN

Mark Claussen, NRAO, P.O. Box 0, Socorro, NM 87801, USA

Timothy Cornwell, NRAO, P.O. Box 0, Socorro, NM 87801, USA

Richard Crutcher, University of Illinois, 1002 W. Green St. Urbana, IL 61801, USA

Charles Cunningham, Herzberg Institute of Astrophysics, Room 1063, 100 Sussex Drive, Ottawa, Ontario, KIA 0R6, CANADA

Tsuneaki Daishido, Dept. of Science, School of Education, Waseda University, 6-1 Nishiwaseda 1-chome, Shinjuku-ku, Tokyo 169, JAPAN

Jacqueline Davidson, NASA / Ames Research Center, SETI Institute, MS 245-6 Moffett Field, CA 94035-1000, USA

Shuji Deguchi, Nobeyama Radio Observatory, Nobeyama, Minamimaki, Minamisaku, Nagano 384-13, JAPAN

Didier Despois, Observatoire de Bordeaux, BP 89, 33270 Floirac, FRANCE

Hélène Dickel, University of Illinois, c/o The Australia Telescope National Facility, P.O. Box 76, Epping NSW 2121, AUSTRALIA

Sheperd Doeleman, MIT Haystack Observatory, Off Route 40, Westford, MA 01886, USA

Wolfgang J. Duschl, Institut fuer Theoretische Astrophysik, Univ. of Heidelberg, Im Neuenheimer Feld 561, W-6900 Heidelberg, GERMANY

Ronald David Ekers, Australian Telescope National Facility, P.O. Box 76, Epping NSW, 2121 AUSTRALIA

Michel Fich, Physics Dept., University of Waterloo, Waterloo, Ontario N2L 3G1, CANADA

Edward Fomalont, NRAO, 520 Edgemont Road, Charlottesville, VA 22903-2475, USA

Rognvald P. Garden, Dept. of Physics, University of California, Irvine, CA 92717, USA

Reinhard Genzel, Max-Planck -Institut für Extraterrestrische Physik, Karl-Schwarzschild-Str. 1, D-8046 Garching, GERMANY

Stéphane Guilloteau, I.R.A.M., 300 rue de la Piscine, F-38406 Saint-Martin-D'Hères, FRANCE

Colin G. Hall, Joint Astronomy Centre, 665, Komohana Street, Hilo, HI 96720, USA

Peter J. Hall, CSIRO Australia Telescope, P.O. Box 94, Narrabri, NSW 2390, AUSTRALIA

Fu Han, Purple Mountain Observatory, Academia Sinica, Nanjing 210008, CHINA

Kazuyuki Handa, Nobeyama Radio Observatory, Nobeyama, Minamimaki, Minamisaku, Nagano 384-13, JAPAN

Toshihiro Handa, Institute of Astronomy, University of Tokyo, 21-1 Osawa 2-chome, Mitaka, Tokyo 181, JAPAN

Tetsuo Hasegawa, Associate Professor, Institute of Astronomy, University of Tokyo, 21-1 Osawa 2-chome, Mitaka, Tokyo 181, JAPAN

Kunihiko Hattori, Nobeyama Radio Observatory, Nobeyama, Minamimaki, Minamisaku, Nagano 384-13, JAPAN

Masahiko Hayashi, Dept. of Astronomy, University of Tokyo, 3-1 Hongo 7-chome, Bunkyo-ku, Tokyo 113, JAPAN

Saeko Hayashi, Subaru Project Office, National Astronomical Observatory, 21-1 Osawa 2-chome, Mitaka, Tokyo 181, JAPAN

Robert Hayward, National Research Council of Canada / Herzberg Institute of Astrophysics, 100 Sussex Dr., Rm 1064, Ottawa, Ontario, K1A 0R6, CANADA

Thomas Henning, Max-Planck-Gesellschaft, Schilleogässchen 2, D-0-6900, GERMANY

Richard Hills, MRAO, Cavendish Laboratory, Madingley Road, Cambridge, CB3 0HE, ENGLAND

- Hisashi Hirabayashi**, The Institute of Space and Astronautical Science, 1-1 Yoshinodai 3-chome, Sagamihara, Kanagawa 229, JAPAN
- Naomi Hirano**, Laboratory of Astronomy and Geophysics, Hitotsubashi University, 2-1 Naka Kunitachi, Tokyo 186, JAPAN
- Paul T. P. Ho**, Center for Astrophysics, 60 Garden St., Cambridge, MA 02138, USA
- Mark Holdaway**, NRAO, P.O. Box 0, Socorro, NM 87801, USA
- Fu-Quan Huang**, Purple Mountain Observatory, Academic Sinica, Nanjing 210008, CHINA
- Robert Hurt**, Dept. of Astronomy, UCLA, 405 Hilgard Ave., Los Angeles, CA 90024, USA
- Chung Hyun Soo**, Korea Astronomy Observatory, San 36-1, Whaam-dong, Yusung-gu, Daejeon 305-348, KOREA
- Im In Sung**, Korea Astronomy Observatory, San 36-1, Whaam-dong, Yusung-gu, Daejeon 305-348, KOREA
- Junji Inatani**, Nobeyama Radio Observatory, Nobeyama, Minamimaki, Minamisaku, Nagano 384-13, JAPAN
- Makoto Inoue**, Nobeyama Radio Observatory, Nobeyama, Minamimaki, Minamisaku, Nagano 384-13, JAPAN
- Judith Irwin**, Dept. of Physics, Queen's University, Stirling Hall, Kingston, K7L 3N6, CANADA
- Makio Ishiguro**, The Institute of Statistical Mathematics, 6-7 Minami-Azabu 4-chome, Minato-ku, Tokyo 106, JAPAN
- Masato Ishiguro**, Nobeyama Radio Observatory, Nobeyama, Minamimaki, Minamisaku, Nagano 384-13, JAPAN
- Sumio Ishizuki**, University of Tokyo, c/o NRO, Nobeyama, Minamimaki, Minamisaku, Nagano 384-13, JAPAN
- Hiroyuki Iwashita**, Nobeyama Radio Observatory, Nobeyama, Minamimaki, Minamisaku, Nagano 384-13, JAPAN
- Takahiro Iwata**, Kashima Space Research Center, Communications Research Laboratory, 893-1, Hirai, Kashima, Ibaraki 314, JAPAN
- Jun Jugaku**, (Tokai University) 29-3 Sakuragaoka 2-chome, Tama, Tokyo 206, JAPAN
- Seiji Kamenno**, Dept. of Astronomy, Faculty of Science, University of Tokyo, c/o NRO, Nobeyama, Minamimaki, Minamisaku, Nagano 384-13, JAPAN
- Osamu Kameya**, Mizusawa Astrogeodynamics Observatory, NAO, Hoshigaoka-cho, Mizusawa, Iwate 023, JAPAN
- Tomio Kanzawa**, Nobeyama Radio Observatory, Nobeyama, Minamimaki, Minamisaku, Nagano 384-13, JAPAN

Takashi Katagi, Mitsubishi Electric Corporation, 1-1 Ofuna 5-chome, Kamakura, Kanagawa 247, JAPAN

Tatsuji Kato, Faculty of Education, Utsunomiya University, 350 Mine, Utsunomiya, 321, JAPAN

Ryohei Kawabe, Nobeyama Radio Observatory, Nobeyama, Minamimaki, Minamisaku, Nagano 384-13, JAPAN

Noriyuki Kawaguchi, Nobeyama Radio Observatory, Nobeyama, Minamimaki, Minamisaku, Nagano 384-13, JAPAN

Jeff Kenney, Astronomy Dept., Yale University, Box 6666, New Haven, CT 06511, USA

Vladimir Khainkin, The Special Astrophysical Obs. of Russian Academy of Sciences, N. Arkhyz, 357147, Karachi-Cherkessia, RUSSIA

Takahiro Kikumoto, Astronomical Institute, Faculty of Science, Tohoku University, Aramaki, Aoba-ku, Sendai, 980, JAPAN

Yoshimi Kitamura, School of Allied Medical Sciences, Kagoshima University, 35-1 Sakuragaoka 8-chome, Kagoshima 890, JAPAN

Hideyuki Kobayashi, The Institute of Space and Astronautical Science, 1-1 Yoshinodai 3-chome, Sagami-hara, Kanagawa 229, JAPAN

Marita Krause, Max-Planck -Institut für Radioastronomie, Auf den Hügel 69, D-5300 Bonn 1, GERMANY

Toru Kuriyama, Toshiba Research & Development Center, 4-1 Ukishima-cho, Kawasaki-ku, Kawasaki 210, JAPAN

Sun Kwok, Dept. of Physics & Astronomy, University of Calgary, Calgary, Alberta T2N 1N4, CANADA

Oliver Peter Lay, MRAO, University of Cambridge, Cavendish Laboratory, Madingley Road, Cambridge, CB3, 0HE, ENGLAND

Terry Lee, Royal Observatory, Edinburgh, Blackford Hill, Edinburgh EH9 3HJ, SCOTLAND

Deborah Levine, UCLA / IPAC (JPL/Caltech), MS100-22, IPAC, Caltech, Pasadena CA 91125, USA

Harvey Liszt, NRAO, 520 Edgemont Road, Charlottesville, VA 22903-2475, USA

K.Y. Lo, Astronomy Dept., University of Illinois, 1002 West Green Street, Champaign, IL 61801, USA

Ling Ma, Urumqi Astronomical Station Chinese Academy of Sciences / NRO, Nobeyama, Minamimaki, Minamisaku, Nagano 384-13, JAPAN

Robert Martin, Steward Observatory, University of Arizona, Tucson, AZ 85721, USA

Colin Masson, Center for Astrophysics, 60 Garden St., Cambridge, MA 02138, USA

- Kinya Matsumoto**, University of Electro-Communications
/NRO, Nobeyama, Minamimaki, Minamisaku, Nagano 384-13, JAPAN
- Hiroshi Matsuo**, Nobeyama Radio Observatory, Nobeyama, Minamimaki,
Minamisaku, Nagano 384-13, JAPAN
- M. Gerrard McCulloch**, Australia Telescope National Facility
/NRO, Nobeyama, Minamimaki, Minamisaku, Nagano 384-13, JAPAN
- Hitomi Mikami**, Dept. of Astrophysics, Nagoya University, Chikusa-ku, Nagoya,
464-01, JAPAN
- Shoken Miyama**, Division of Theoretical Astrophysics, National Astronomical
Observatory, Mitaka, Tokyo 181, JAPAN
- Ryosuke Miyawaki**, Dept. of Science Education, Fukuoka University of
Education, 729 Akama, Munakata, Fukuoka 811-41, JAPAN
- Akira Mizuno**, Dept. of Astrophysics, Nagoya University, Furocho, Chikusa-ku,
Nagoya, 464-01, JAPAN
- James M. Moran**, Harvard Smithsonian Center for Astrophysics, 60 Garden
Street, MS-42, Cambridge, MA 02138, USA
- Masaki Morimoto**, Nobeyama Radio Observatory, Nobeyama, Minamimaki,
Minamisaku, Nagano 384-13, JAPAN
- Koh-Ichiro Morita**, Nobeyama Radio Observatory, Nobeyama, Minamimaki,
Minamisaku, Nagano 384-13, JAPAN
- Yasuhiro Murata**, The Institute of Space and Astronautical Science, 1-1
Yoshinodai 3-chome, Sagamihara, Kanagawa 229, JAPAN
- Tomoo Nagahama**, Radio Astronomy Laboratory, Dept. of Physics and
Astrophysics, Nagoya University, Chikusa-ku, Nagoya, 464-01, JAPAN
- Junichi Nakajima**, Dept. of Physics and Applied Physics, Waseda University, 6-1
Nishiwaseda 1-chome, Shinjuku-ku, Tokyo 169, JAPAN
- Makoto Nakano**, Dept. of Earth Science, Faculty of Education, Oita University,
Oita 870-11, JAPAN
- Takenori Nakano**, Nobeyama Radio Observatory, Nobeyama, Minamimaki,
Minamisaku, Nagano 384-13, JAPAN
- Kota Nishiyama**, The Graduate Univ. for Advanced Studies
/NRO, Nobeyama, Minamimaki, Minamisaku, Nagano 384-13, JAPAN
- Takashi Noguchi**, Nobeyama Radio Observatory, Nobeyama, Minamimaki,
Minamisaku, Nagano 384-13, JAPAN
- Nagayoshi Ohashi**, Nobeyama Radio Observatory, Nobeyama, Minamimaki,
Minamisaku, Nagano 384-13, JAPAN
- Masatoshi Ohishi**, Nobeyama Radio Observatory, Nobeyama, Minamimaki,
Minamisaku, Nagano 384-13, JAPAN
- Kanji Ohta**, Dept. of Physics, Faculty of Science, Hokkaido University, Supporo,
060, JAPAN

- Tomoharu Oka**, Dept. of Astronomy, University of Toyo, 11-16 Yayoi 2-chome, Bunkyo-ku, Tokyo 113, JAPAN
- K. Sachiko Okumura**, Nobeyama Radio Observatory, Nobeyama, Minamimaki, Minamisaku, Nagano 384-13, JAPAN
- Toshihiro Omodaka**, Dept. of Physics, College of Liberal Arts, Kagoshima University, 21-30 Korimoto 1-chome, Kagoshima 890, JAPAN
- Stephen Padin**, Caltech / Owens Valley Radio Obs., PO Box 968, Big Pine, CA 93513, USA
- Yuri Parijskij**, Special Astrophysical Observatory of Russia Academy of Sciences, Russia, Karachai-Cherkessia, 357147 Nizhnij Arkhyz, RUSSIA
- Tomas G. Phillips**, California Institute of Technology, George W. Downs Laboratory of Physics, MS. 320-47, Pasadena, CA, 91125, USA
- Raymond Plante**, Astronomy Dept., University of Illinois, 103 Astronomy, 1002 West Green Street, Urbana, IL 61801, USA
- Duk Gyoo Roh**, University of Tokyo, c/o NRO, Nobeyama, Minamimaki, Minamisaku, Nagano 384-13, JAPAN
- Alexander Rudolph**, NASA / Ames Research Center, MS 245-6, Moffett Field, CA, 94035-1000, USA
- Adrian Russell**, Royal Observatory Edinburgh, Blackford Hill, Edinburgh, EH9 3HJ, SCOTLAND
- Masao Saito**, Dept. of Astronomy, University of Tokyo, c/o NRO, Nobeyama, Minamimaki, Minamisaku, Nagano 384-13, JAPAN
- Shuji Saito**, Institute for Molecular Science, 38 Saionaka, Myodaiji-cho, Okazaki 444, JAPAN
- Akihiro Sakamoto**, Nobeyama Radio Observatory, Nobeyama, Minamimaki, Minamisaku, Nagano 384-13, JAPAN
- Kazushi Sakamoto**, University of Tokyo, c/o NRO, Nobeyama, Minamimaki, Minamisaku, Nagano 384-13, JAPAN
- Seiichi Sakamoto**, Dept. of Astronomy, University of Toyo, 11-16 Yayoi 2-chome, Bunkyo-ku, Tokyo 113, JAPAN
- Goran Sandell**, Joint Astronomy Center, 665 Komohana Street, Hilo, HI 96720, USA
- Anneila Sargent**, Astronomy Dept., Caltech, 105-24, Pasadena, CA 91125, USA
- Antony Schinckel**, Caltech Submillimeter Observatory, PO Box 4339, Hilo, HI, 96720, USA
- Franz Schoeniger**, Institute of Astronomy, University of Tokyo, 21-1 Osawa 2-chome, Mitaka, Tokyo 181, JAPAN
- Nicholas Scoville**, Astronomy Dept., Caltech, 105-24, Pasadena, CA 91125, USA

- Sheng-Cai Shi**, Purple Mountain Observatory / NRO, Nobeyama, Minamimaki, Minamisaku, Nagano 384-13, JAPAN
- Katsunori M. Shibata**, Nobeyama Radio Observatory, Nobeyama, Minamimaki, Minamisaku, Nagano 384-13, JAPAN
- Schubert Soares**, Caltech / Owens Valley Radio Obs., P.O. Box 968, Big Pine, CA 93513, USA
- Yoshiaki Sofue**, Institute of Astronomy, University of Tokyo, 21-1 Osawa 2-chome, Mitaka, Tokyo 181, JAPAN
- Karl Stapelfeldt**, Astronomy Dept., University of Massachusetts, 517G Lederle Graduate Tower, Amherst, MA 01003, USA
- Koji Sugitani**, College of General Education, Nagoya City University, Mizuhocho, Mizuho-ku, Nagoya 467, JAPAN
- Kazuyoshi Sunada**, Nobeyama Radio Observatory, Nobeyama, Minamimaki, Minamisaku, Nagano 384-13, JAPAN
- Mika Suzuki**, The Graduate University for Advanced Studies c/o NRO, Minamimaki, Minamisaku, Nagano 384-13, JAPAN
- Hiroto Tabara**, Faculty of Education, Utsunomiya University, 350 Mine, Utsunomiya 321, JAPAN
- Hiroshi Takaba**, Kashima Space Research Center, Communications Research Laboratory, 893-1 Hirai, Kashima, Ibaraki, 314, JAPAN
- Toshikazu Takahashi**, Nobeyama Radio Observatory, Nobeyama, Minamimaki, Minamisaku, Nagano 384-13, JAPAN
- Shuro Takano**, Institute for Molecular Science, 38 Saionaka, Myodaiji, Okazaki 444, JAPAN
- Toshiaki Takano**, Nobeyama Radio Observatory, Nobeyama, Minamimaki, Minamisaku, Nagano 384-13, JAPAN
- Motohide Tamura**, Jet Propulsion Laboratory, MS 169-506, 4800 Oak Grove Drive, Pasadena, CA 91109, USA
- Yoshiaki Taniguchi**, Astronomical Institute, Tohoku University, Aramaki, Aoba, Sendai 980, JAPAN
- Claudio Eiichi Tateyama**, INPE / CRAAE / NRO, Nobeyama, Minamimaki, Minamisaku, Nagano 384-13, JAPAN
- José M. Torrelles**, Instituto de Astrofísica de Andalucía and Haverd-SAO, Radio Astronomy Division, MS 78, 60 Garden St., Cambridge, MA 02138, USA
- Tomoka Tosaki**, Astronomical Institute, Faculty of Science, Tohoku University, Aramaki, Aoba, Sendai 980, JAPAN
- Masato Tsuboi**, Nobeyama Radio Observatory, Nobeyama, Minamimaki, Minamisaku, Nagano 384-13, JAPAN
- Jean Turner**, Dept. of Astronomy, UCLA, 405 Hilgard Ave., Los Angeles, CA 90024, USA

Tomofumi Umemoto, Nobeyama Radio Observatory, Nobeyama, Minamimaki, Minamisaku, Nagano 384-13, JAPAN

Esko Valtaoja, Metsahovi Radio Research Station, Helsinki University of Technology, Metsahovi / TTK Otakaari 5A, SF-02150 Espoo, FINLAND

Paul Van Der Werf, Max-Planck-Institut für Extraterrestrische Physik, Giessenbachstrasse, D-8046 Garching bei München, GERMANY

Wim Van Driel, Kiso Observatory, Mitake-mura, Kiso-gun, Nagano 397-01, JAPAN

Huib Van Langevelde, Sterrewacht Leiden, Postbus 9513, Leiden, NL-2300 RA, the NETHERLANDS

Francois Viallefond, Dept. Radioastronomie Millimetrique, Observatoire de Paris-Meudon, F 92195 Meudon, Principal Cedex, FRANCE

Stuart Vogel, Astronomy Dept., University of Maryland, College Park, MD 20742, USA

Keiichi Wada, Dept. of Physics, Hokkaido University, Supporo, 060, JAPAN

Yangsheng Wang, Dept. of Astronomy, University of Texas at Austin, RLM 13.134, Austin, TX 78712, USA

ZhongWang, Infrared Processing and Analysis Center, California Institute of Technology, 100-22, Pasadena, CA 91125, USA

Jack Welch, Astronomy Dept., University of California / Berkeley, Berkeley, CA 94720, USA

Mark H. Wieringa, Australia Telescope National Facility, P.O. Box 94, Narrabri, NSW 2390, AUSTRALIA

David Wilner, Astronomy Dept., University of California / Berkeley, Berkeley, CA 94720, USA

Jennifer Wiseman, Harvard-Smithsonian Center for Astrophysics, MS 10, 60 Garden St., Cambridge, MA 02138, USA

Satoshi Yamamoto, Dept. of Astrophysics, Nagoya University, Chikusa-ku, Nagoya, 464-01, JAPAN

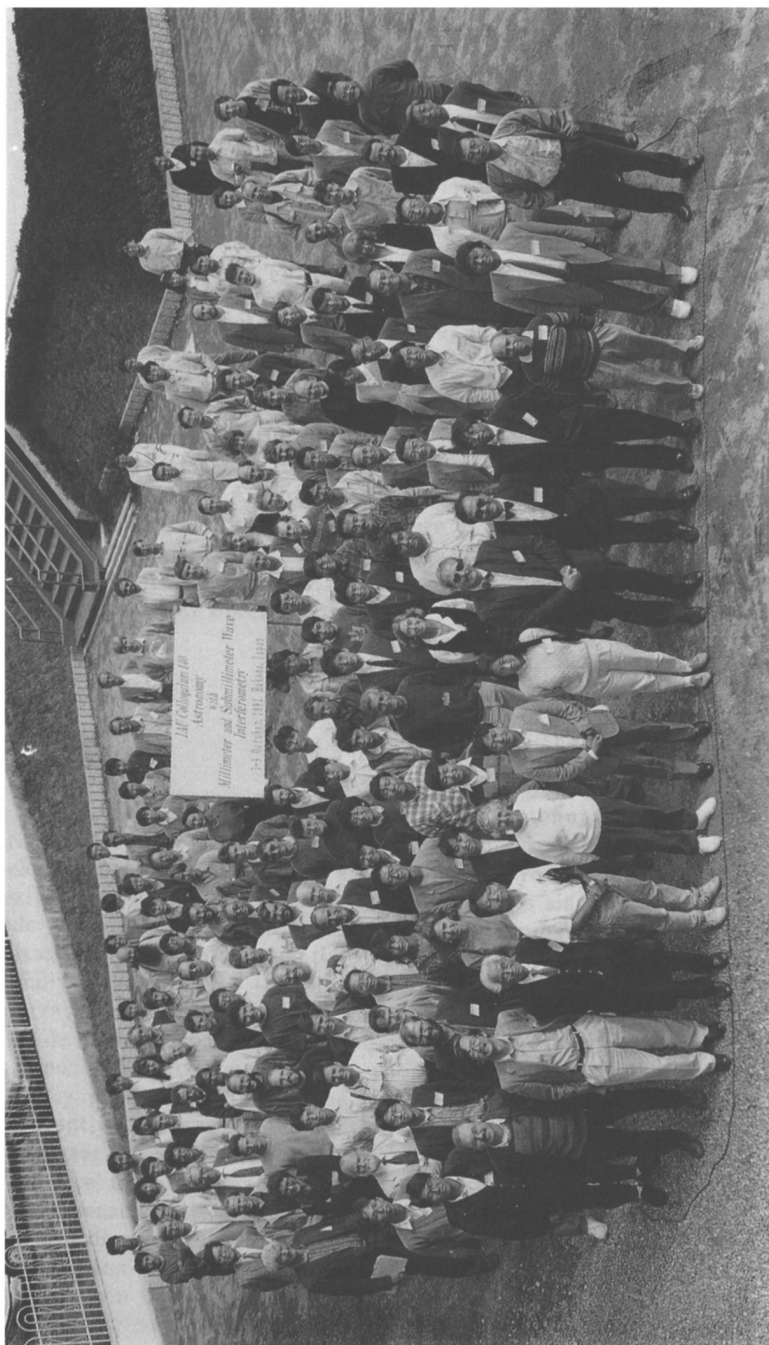
Issei Yamamura, Dept. of Astronomy, University of Tokyo, 11-16 Yayoi 2-chome, Bunkyo-ku, Tokyo 113, JAPAN

Takeo Yoshino, Univ. of Electro-Communications, 1-5-1, Chofugaoka, Chofu, Tokyo 182, JAPAN

Shudong Zhou, Dept. of Astronomy, University of Texas at Austin, Austin, TX 78712, USA

Hans Zinnecker, Institut für Astronomie und Astrophysik Der Universitüt Würzburg, Am Hubland, D-8700, Würzburg, GERMANY

GROUP PHOTO



The participants of IAU Colloquium 140, October 5-9, 1992