



Research Article

Much ado about nothing: assessing the impact of the 4.2 kya event on human subsistence patterns in northern Mesopotamia using stable isotope analysis


Arkadiusz Sołtysiak^{1,*}  & Ricardo Fernandes^{2,3,4}

¹ Department of Bioarchaeology, Faculty of Archaeology, University of Warsaw, Poland

² Department of Archaeology, Max Planck Institute for the Science of Human History, Jena, Germany

³ School of Archaeology, University of Oxford, UK

⁴ Arne Faculty of Arts, Masaryk University, Czech Republic

* Author for correspondence  a.soltysiak@uw.edu.pl



The effects of the 4.2 kya climatic event on northern Mesopotamia have been the subject of significant scholarly debate, with the notion of a megadrought that forced local populations to migrate attracting particular attention. Here, the authors analyse stable carbon ($\delta^{13}\text{C}$) and nitrogen ($\delta^{15}\text{N}$) isotopes in human tooth and bone samples to assess trends in subsistence practice at three sites in Syria before, during and after the presumed megadrought event. Despite the proximity of the sites, isotopic differences between them are more significant than diachronic change. Combined with other archaeological evidence, these results indicate a continuity in subsistence patterns, with no indication of disruption associated with the 4.2 kya event.

Keywords: Syria, Khabur Basin, stable isotopes, subsistence, drought, sustainability

The 4.2 kya event in northern Mesopotamia

Among the eight identified North Atlantic ice-rafting events that are interpreted as periods of aridification in the Northern Hemisphere, the event that started around 4200 years BP and known as the Bond event 3 (Bond *et al.* 2001) is considered to have been the most severe (Walker *et al.* 2018). Recently, the Near Eastern chronology for this event has been assessed more precisely using Mg/Ca and $\delta^{18}\text{O}$ proxies from a speleothem at Gol-e-Zard cave in Iran to 4.26–3.97 kya. The same method has also detected a less significant period of increased aridity between 4.51–4.40 kya (Carolin *et al.* 2019).

Received: 9 June 2020; Revised: 27 October 2020; Accepted: 16 November 2020

© The Author(s), 2021. Published by Cambridge University Press on behalf of Antiquity Publications Ltd. This is an Open Access article, distributed under the terms of the Creative Commons Attribution licence (<https://creativecommons.org/licenses/by/4.0/>), which permits unrestricted re-use, distribution, and reproduction in any medium, provided the original work is properly cited.

The Bond event 3 roughly coincided with the fall of the Near Eastern Akkadian Empire and with the decline of the Old Kingdom in Egypt (Foster 2016; Dee 2017). Some archaeological sites in northern Mesopotamia were completely abandoned at this time, including Tell Leilan in the Khabur Basin (Figure 1). Here, archaeological evidence led Harvey Weiss, the excavator of the site, to argue that rapid aridification made both herding and plant cultivation unreliable, resulting in the abandonment of the entire region for a few centuries (Weiss *et al.* 1993). Although his opinion about the cause of this disaster has since evolved (cf. Staubwasser & Weiss 2006), Weiss (2016) still claims that the 4.2 kya event resulted in a megadrought that decreased average annual precipitation by 30–50 per cent and forced local populations to migrate to other regions, mainly to southern Mesopotamia.

The scenario of a sudden, region-wide catastrophe that caused a massive depopulation of northern Mesopotamia has not been widely accepted by other archaeologists, who have raised a series of convincing counterarguments, starting with the mismatch between archaeological and palaeoclimatic chronological frameworks (Butzer & Endfield 2012). Refinements in the pottery typology used for dating surveyed sites (see Pfälzner 2017) have established that there was indeed a hiatus at some sites following the Akkadian period (for a regional chronology, see Table 1). At more than 20 archaeological sites in northern Mesopotamia, however, there is no evidence for such population discontinuity (Koliński 2011). Furthermore, even in cases where the population decreased and settlement patterns changed (e.g. Ur 2010; Lawrence *et al.* 2016), not all major regional urban centres followed the same trajectory. Tell Brak, for example, was reduced in size, and Tell Leilan was completely abandoned (Emberling *et al.* 2012), while Tell Hamoukar continued to flourish during the period of the purported drought (Ur 2015).

Although some local climatic deterioration during the 4.2 kya event is not contested, several authors have proposed more nuanced scenarios for the period following the fall of the Akkadian Empire. Wilkinson (1997) argued that it was not the drought itself, but rather the exploitation of resources close to the limits of sustainability that made some local populations more vulnerable. In locations where agricultural output may have increased through the expansion of arable fields or by more intensive manuring, drought events had limited effects on population densities (Ur 2015; Cookson *et al.* 2019). Instead, they triggered a transformation in local forms of social organisation, resulting in adaptations to the new environmental conditions (Pfälzner 2012, 2017).

The zooarchaeological and archaeobotanical data provide no evidence for a catastrophic shift in local economies. Proportions of taxa in animal bone assemblages do not change significantly over time, except in rural settlements located in areas with annual precipitation lower than 300mm. In these latter areas, some moderate increase in ovicaprids at the expense of suids—suggesting drier conditions—has been observed. Most sites, however, show a clear continuity in animal husbandry patterns (Gaastra *et al.* 2019), as illustrated by the assemblages at Tell Arbid, where a relatively high proportion of pig is documented throughout the third millennium BC (Piątkowska-Małecka & Smogorzewska 2010), that is, both before and during the 4.2 kya event. The interpretation of the evidence at Tell Brak is less clear. One study suggests an increase in pig consumption during the Akkadian and post-Akkadian periods (Dobney *et al.* 2003), while another indicates a relatively low proportion of pig during the same period (Clutton-Brock *et al.* 2001)—a discrepancy that may merely reflect variability in dietary preferences between different social groups at this large site.

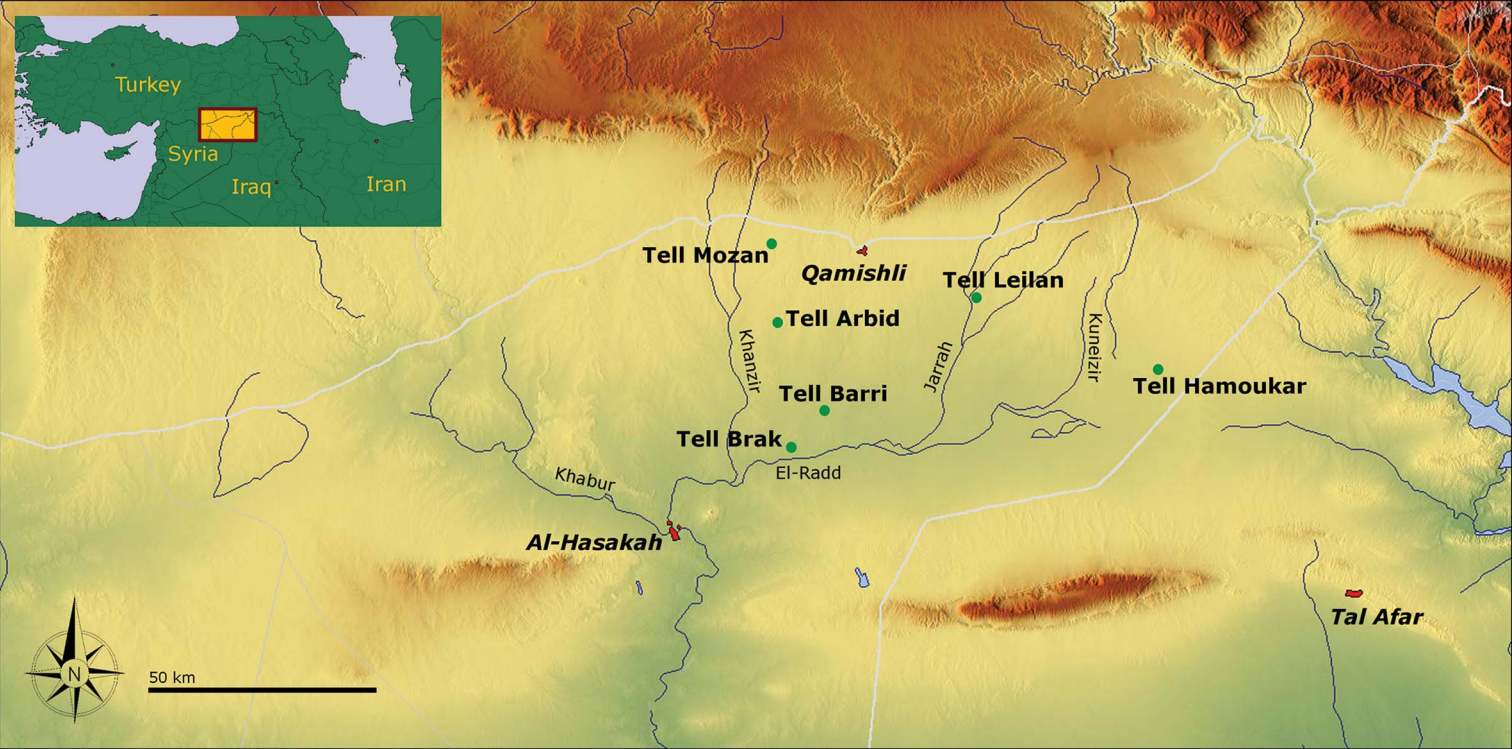


Figure 1. Map showing the location of the sites discussed. Base map from OpenStreetMap (openstreetmap.org; figure by A. Soltysiak).

Table 1. Chronology of northern Mesopotamia and definition of the four periods used in this article. Periodisation based on Oates *et al.* (2001) and Pfälzner (2012). EBA = Early Bronze Age, MBA = Middle Bronze Age.

Years BC	Traditional chronology	Jasirah chronology	Tell Barri chronology	Tell Brak chronology	Historical period	This study (periods)
2800–2600	EBA II	Early Jasirah II	41–44	J	Nineveh V	A
2600–2350	EBA III	Early Jasirah III	38–39	K/L	Early Dynastic III	A
2350–2150	EBA IVa	Early Jasirah IV	36–37	M	Akkadian	B
2150–2000	EBA IVb	Early Jasirah V	34	N	Post-Akkadian	C
2000–1800	MBA I	Old Jasirah I	31–33		Isin-Larsa	D
1800–1550	MBA II	Old Jasirah II	30		Old Babylonian	D

Nor does the megadrought hypothesis find support in studies of plant remains. At Tell Mozan there was a dramatic shift in the proportion of crops during the post-Akkadian period, when drought-resistant, two-row barley and emmer were replaced by less drought-resistant, free-threshing wheat, suggesting more humid conditions during that period (Riehl 2010). Moreover, there is no archaeobotanical evidence of increased aridity before the beginning of the second millennium BC, when drought-resistant cereals again became more popular. Carbon stable isotope analysis of plant remains also indicates relatively humid regional conditions until the end of the third millennium BC (Riehl 2017). Aggregated data on crop proportions suggest that relatively drier conditions prevailed only between *c.* 2150 and 2100 BC, and that the overall climate conditions for the last quarter of the third millennium BC were favourable to plant cultivation (Dornauer 2017).

Assuming that a megadrought event did not take place at the time of the fall of the Akkadian Empire and during the so-called ‘dark age’ in the twenty-second century BC, it is nonetheless clear from the available data that there was a population decrease in northern Mesopotamia (Lawrence *et al.* 2016). The zooarchaeological and archaeobotanical evidence, however, does not reveal an economic crisis or changes in subsistence strategies typically associated with aridification. A higher proportion of drought-resistant crops (Riehl *et al.* 2008), or an increased frequency of ovicaprids combined with a decline in pig breeding (Piątkowska-Małecka & Koliński 2006), is only observed at the beginning of the second millennium BC. Therefore, the pattern of human adaptation to political and social changes in northern Mesopotamia following the fall of the Akkadian Empire remains ambiguous.

To address this question, analyses of stable carbon ($\delta^{13}\text{C}$) and nitrogen ($\delta^{15}\text{N}$) isotopes in human collagen can be used to reconstruct past subsistence strategies. These isotopic proxies are particularly useful in assessing the contributions of different sources of dietary protein, such as cultivated crops or domesticated animals (Ben-David & Flaherty 2012). Human isotopic shifts may also arise from changes in the isotopic signatures of consumed foods, which are in turn influenced by climatic or environmental factors (e.g. levels of aridity) and human, animal- and crop-management practices, such as manuring and irrigation.

In this article, we assess the degree of subsistence continuity or change in northern Mesopotamia before, during and after the 4.2 kya event, using carbon and nitrogen stable isotope measurements on human collagen extracted from 75 individuals buried at three archaeological sites located relatively close to each other in the central part of the Khabur Basin, between the modern Syrian cities of Al-Hasakah and Qamishli. The sites represent first- and second-rank Bronze Age urban centres (i.e. local kingdom capital cities and towns controlling smaller units within these kingdoms; cf. Smogorzewska 2018), with long-term occupation and well-established archaeological stratigraphies. Our aim is to investigate whether any change observed in isotopic signatures relates to the chronology, location or rank of these sites.

Reconstructing subsistence using bone and tooth collagen $\delta^{13}\text{C}$ and $\delta^{15}\text{N}$ values

In the context of this study, it is particularly important to consider the distinction between C_3 and C_4 plant types, which have well-differentiated $\delta^{13}\text{C}$ values resulting from major differences in their photosynthetic pathways (Cerling *et al.* 1997). C_3 plants include the types of cereals and legumes cultivated in northern Mesopotamia during the Bronze Age. Animals feeding on such plants are also classified as C_3 , and humans consuming exclusively these food sources are expected to have bone collagen $\delta^{13}\text{C}$ values of approximately -21 to -20‰ (van der Merwe 1982). While there is no evidence of direct human consumption of C_4 plants, humans may have consumed dairy products and meat from animals grazed in the dry steppe, where some wild C_4 taxa are relatively abundant in comparison to cultivated fields (Sołtysiak 2020). A full reliance on C_4 food sources would produce human bone collagen $\delta^{13}\text{C}$ values of approximately -7 to -6‰ (van der Merwe 1982). We do not consider potential marine protein contributions here, given the long distances between the investigated sites and the nearest coastlines.

The $\delta^{15}\text{N}$ values of food sources vary according to their position within a food chain, with an approximately 3.5‰ increase along each trophic level (Hedges & Reynard 2007). This serves as the basis for distinguishing between the protein contributions from terrestrial plant and animal food sources (Ben-David & Flaherty 2012). We consider the consumption of freshwater fish unlikely here, given that the rivers in the Khabur Basin are mainly seasonal. Plant $\delta^{15}\text{N}$ values, however, are also influenced by manuring practices and local precipitation levels. The latter has been shown to increase the $\delta^{15}\text{N}$ value of herbivore bone collagen by approximately 1‰ for a reduction of $\sim 50\text{mm}$ in mean annual precipitation (Shishlina *et al.* 2012), whereas manuring—depending on its intensity—may shift plant $\delta^{15}\text{N}$ by several ‰ (Bogaard *et al.* 2013). Therefore, variability in manuring intensity is the most likely factor contributing to the range of $\delta^{15}\text{N}$ values observed in humans living in northern Mesopotamia (Styring *et al.* 2017).

As the photosynthetic pathways of C_4 plants are better adapted to low precipitation conditions, aridisation also leads to an increase of C_4 plants among wild vegetation cover (Ben-David & Flaherty 2012). Thus, a roughly positive correlation is expected between the $\delta^{13}\text{C}$ and $\delta^{15}\text{N}$ values of animals feeding on wild vegetation. Under a subsistence shift from plant cultivation to mobile pastoralism on Near Eastern steppes, an increase in human bone collagen $\delta^{13}\text{C}$ and $\delta^{15}\text{N}$ values is to be expected. If a prolonged megadrought took place during the 4.2 kya event, human $\delta^{15}\text{N}$ and $\delta^{13}\text{C}$ bone collagen values from sites in

northern Mesopotamia would be expected to be significantly different from those of previous or subsequent periods.

Materials and methods

Stable isotope analysis was undertaken on skeletal assemblages from the sites of Tell Brak, Tell Barri and Tell Arbid, dating to the Early and Middle Bronze Ages in the Khabur Basin (Figure 1 & Table 1). At this time, Tell Brak was the capital city of the regional kingdom of Nagar. Among several hundred skeletons unearthed there (Sołtysiak 2009), a sample of 35 has yielded sufficient collagen for analysis. Unfortunately, the analysis of Tell Brak is limited to the Early Bronze Age individuals because no Middle Bronze skeletons are present in this sample. Although considerably fewer skeletons have been excavated at Tell Barri (ancient Kahat, a second-rank urban centre located approximately 12km north of Tell Brak; Sołtysiak 2010a), these are relatively better preserved, and 21 Early/Middle Bronze Age individuals are available for analysis. Tell Arbid, around 22km to the north of Tell Brak, was an Early to Middle Bronze Age provincial town, with excavation yielding more than 200 skeletons (Sołtysiak 2010b). Poor preservation, however, means that only 19 samples are available for stable isotope analysis. The full dataset for Tell Arbid is included in the online supplementary materials (OSM; see also Sołtysiak 2019). This dataset is compared with previously published data from Tell Brak (Styring *et al.* 2017) and Tell Barri (Sołtysiak & Schutkowski 2015), according to the periodisation we have defined for these sites (periods A–D in Table 1).

After mechanically cleaning the bone or dentine samples, collagen was extracted using a modified Longin method (Brown *et al.* 1988). The filtered products were lyophilised, and a subsample of 0.4 ± 0.1 mg was combusted and analysed by Isotope Ratio Mass Spectrometry (Finnigan Delta Plus XL) in the School of Archaeological Sciences, University of Bradford, with an analytical precision of $\pm 0.2\%$ for nitrogen and $\pm 0.05\%$ for carbon isotopes. The accuracy and precision of the analytical methods were assessed using methionine as a standard reference material (Elemental Microanalysis, Devon, UK). Collagen yields of one per cent and more (van Klinken 1999), as well as the C/N atomic ratio range between 2.9 and 3.6 (Ambrose 1993), were taken as quality references to assess bone and dentine collagen preservation. Measurements of carbon and nitrogen isotopic ratios are reported relative to the VPDB and AIR standards using the delta notation ($\delta^{13}\text{C}$ and $\delta^{15}\text{N}$).

To determine whether differences in isotopic values in each subset (site and period) were significant, we employed the open-source R statistical software to perform a Kruskal-Wallis rank-sum test, followed by pairwise comparisons using a Wilcoxon rank-sum test, with multiple test correction using the Benjamini-Hochberg procedure (R Core Team 2013).

We also employed the Bayesian software ResSources, developed within the Pandora and IsoMemo initiatives (<https://isomemoapp.com>), to estimate the caloric contributions from C_3 plants *vs* terrestrial animal products for the Tell Brak samples during periods A–C. For these periods we relied on previously published isotopic data from archaeological plant remains corrected for charring effects ($n = 221$, $\delta^{13}\text{C} = -23.6 \pm 0.7\%$, $\delta^{15}\text{N} = 5.2 \pm 1.8\%$) and from animal bone collagen ($n = 5$, $\delta^{13}\text{C} = -19.2 \pm 1\%$, $\delta^{15}\text{N} = 7.4 \pm 1.6\%$) (Styring *et al.* 2017). The defined Bayesian model is equivalent to previous applications of the

FRUITS Bayesian mixing model, and includes a description of dietary routing mechanisms and diet-to-consumer isotopic offsets, food macronutrient concentrations, and corrections for isotopic differences between edible macronutrients and measured isotopic values in food remains (Fernandes *et al.* 2012, 2014, 2015). The model also includes the prior assumption that the caloric contribution from plant foods at Tell Brak was larger than that from animal foods (Styring *et al.* 2017). The plant and animal data from Tell Arbid and Tell Barri, however, were insufficient for such analysis.

Results

The range in human $\delta^{13}\text{C}$ values for all subsets across the different sites is relatively narrow, with most individuals falling between -20‰ and -18.5‰ , indicating a diet based predominantly on C_3 sources. Variability in $\delta^{15}\text{N}$ values was higher, ranging from 7‰ – 11‰ for most individuals (Table 2 & Figure 2).

Significant correlations between $\delta^{13}\text{C}$ and $\delta^{15}\text{N}$ values were observed for Tell Barri during period A and Tell Brak during period C (Figure 2). For the latter, however, the correlation results from the presence of an outlier with comparatively high $\delta^{15}\text{N}$ and low $\delta^{13}\text{C}$ values, whereas the data points for the remaining subset cluster closer together (the possible presence of a bimodal distribution is discussed below). Without the inclusion of the major outlier at Tell Brak during period C, no statistically significant correlation is observed ($r = 0$, $p\text{-value} = 0.99$). For Tell Barri during period A, the strong correlation suggests that the analysed

Table 2. Average $\delta^{13}\text{C}$ and $\delta^{15}\text{N}$ human bone and tooth collagen values for the chronological periods at the three archaeological sites.

Site	Period	N	mean $\delta^{13}\text{C}$ (‰)	$\delta^{13}\text{C}$ SD (‰)	mean $\delta^{15}\text{N}$ (‰)	$\delta^{15}\text{N}$ SD (‰)
Tell Arbid	A	2	-19.63	0.47	10.36	0.32
Tell Arbid	B	4	-19.11	0.95	9.09	1.28
Tell Arbid	C	3	-18.72	0.52	8.43	0.44
Tell Arbid	D	10	-19.14	0.27	8.43	1.06
Tell Arbid	Total	19	-19.12	0.53	8.77	1.12
Tell Barri	A	6	-19.87	0.29	8.44	1.53
Tell Barri	B	3	-19.63	0.21	9.64	0.38
Tell Barri	C	4	-19.58	0.50	9.33	2.03
Tell Barri	D	8	-19.48	0.45	8.83	1.51
Tell Barri	Total	21	-19.63	0.40	8.93	1.48
Tell Brak	A	5	-19.37	0.18	8.28	0.44
Tell Brak	B	14	-19.24	0.33	9.14	1.03
Tell Brak	C	16	-19.19	0.40	8.50	1.82
Tell Brak	Total	35	-19.23	0.35	8.72	1.42
All sites	A	13	-19.64	0.35	8.67	1.27
All sites	B	21	-19.27	0.49	9.20	0.99
All sites	C	23	-19.19	0.48	8.63	1.72
All sites	D	18	-19.29	0.39	8.61	1.26
All sites	All periods	75	-19.31	0.46	8.79	1.35

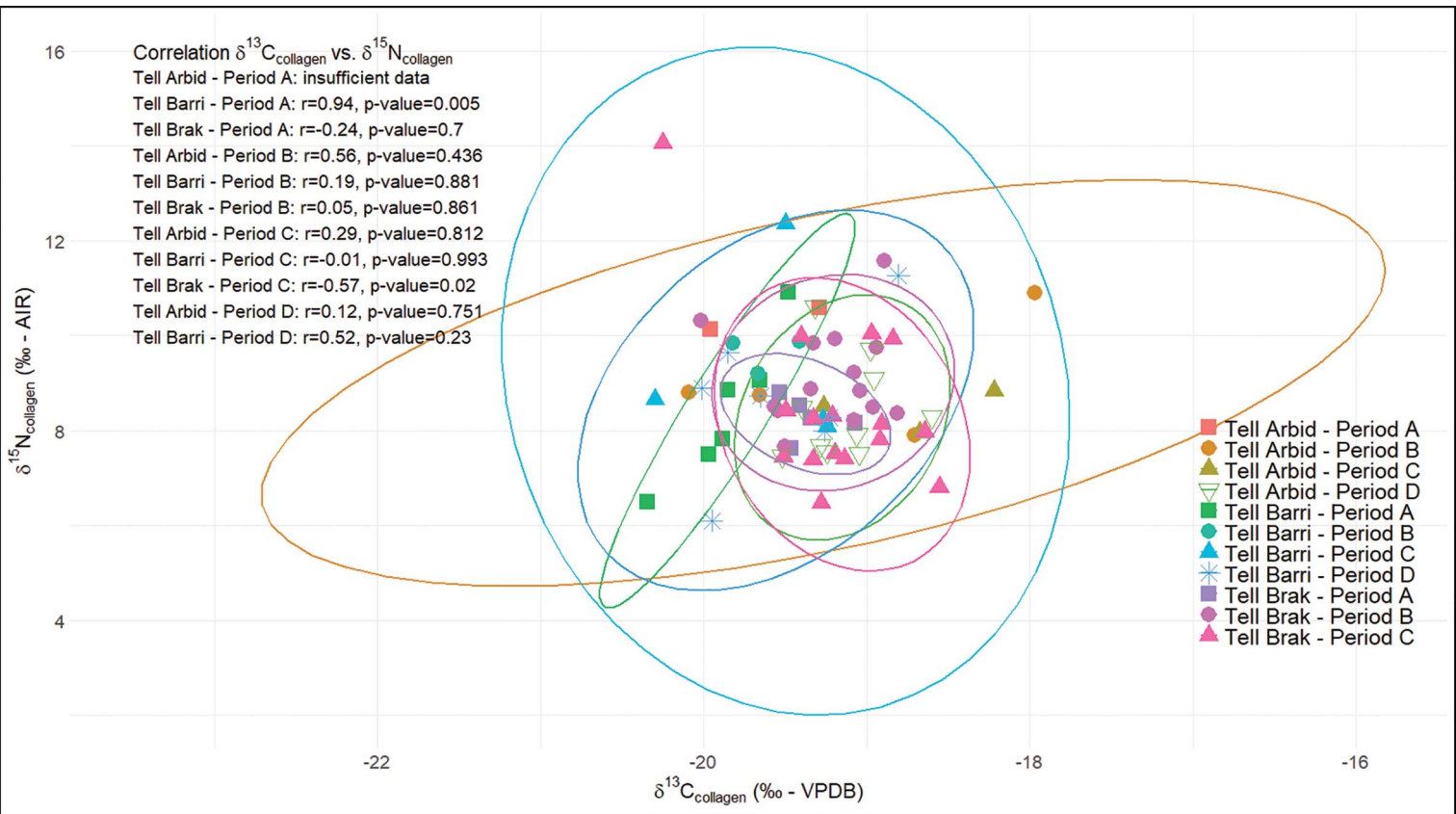


Figure 2. Distribution of human bone and tooth collagen $\delta^{13}\text{C}$ and $\delta^{15}\text{N}$ values at Tell Arbid, Tell Barri and Tell Brak. The ellipses represent 95 per cent confidence intervals for each subset. Also shown are the correlations between $\delta^{13}\text{C}$ and $\delta^{15}\text{N}$ values for each subset (figure by R. Fernandes).

individuals consumed a mix of C_3 plants, with a variable share of products from animals that had a relatively uniform diet. A lack of correlation for the remaining subsets suggests that the observed isotopic variability is more likely to have resulted from the consumption of C_3 plants subjected to varying levels of manuring (and thus with varying $\delta^{15}\text{N}$ values) and from eating different amounts of products from animals whose diets were less uniform in the proportion of C_3 vs C_4 vegetation.

There were statistically significant differences for $\delta^{13}\text{C}$ values across the various subsets (Kruskal-Wallis chi-squared = 22.6, $df = 10$, p -value = 0.012). Pairwise significant differences were observed between Tell Barri during period A and Tell Brak during period C (p -value = 0.03), and between Tell Barri during period A and Tell Arbid during period D (p -value = 0.03). For these pairwise comparisons, the average $\delta^{13}\text{C}$ values were slightly lower at Tell Barri (Table 2). No other statistically significant pairwise differences were observed (Figure 3). As for the $\delta^{15}\text{N}$ values, there are no statistically significant differences (Kruskal-Wallis chi-squared = 13.5, $df = 10$, p -value = 0.195) (Figure 3).

The isotopic data for Tell Brak during period C suggest the presence of two possible distinct groups for $\delta^{15}\text{N}$ values (bimodal distribution), given the presence of three individuals at the higher extreme of the $1.5\times$ of the interquartile range plus one major outlier (Figure 3). Separate Bayesian dietary estimates were generated for low ($\delta^{15}\text{N} = 7.7 \pm 0.6\text{‰}$, $\delta^{13}\text{C} = -19.1 \pm 0.3\text{‰}$) and high ($\delta^{15}\text{N} = 10.0 \pm 0.1\text{‰}$, $\delta^{13}\text{C} = -19.1 \pm 0.3\text{‰}$, major outlier excluded) modes. Figure 4 shows the Bayesian estimates for the caloric contributions from C_3 plants and terrestrial animal products during periods A–C at Tell Brak. Period C is further subdivided into estimates for low (I) and high (II) modes of the potential bimodal distribution. All estimates show a clear predominance of plant caloric contributions, although the 95 per cent credible intervals for the estimates have a wide range, reflecting the uncertainty in food values resulting from varying environmental and human effects (e.g. varying intensities of manuring). Plant caloric intakes were approximately above 65 per cent for the lower end of the 95 per cent credible interval for Tell Brak B and Tell Brak C II, but above ~ 80 per cent for Tell Brak A and Tell Brak C I. In all cases, the upper end of the 95 per cent confidence intervals for estimates of plant caloric intakes reaches or nearly reaches 100 per cent.

In summary, period C, which corresponds to the 4.2 kya event, does not differ significantly from previous or subsequent periods at any of the sites. Diets were dominated by caloric contributions from C_3 plants, although uncertainties in food isotopic values preclude precise estimates.

Discussion

Although the sample sizes are small for most subsets, and isotopic measurements in contemporaneous animal bones or cereal grains are only available for Tell Brak, the isotopic evidence is sufficient to show that no dramatic shifts in subsistence occurred in the Khabur Basin during the 4.2 kya event. There is no evidence for a megadrought, as suggested by Weiss (2016), nor for any major re-orientation of the local economy following the fall of the Akkadian Empire. The comparison of Tell Brak during period C with Tell Barri during period A provides the only indication of a slight (but significant) difference in $\delta^{13}\text{C}$ values that may have been a consequence of a wider exploitation of dry steppes for pasturing at Tell Brak.

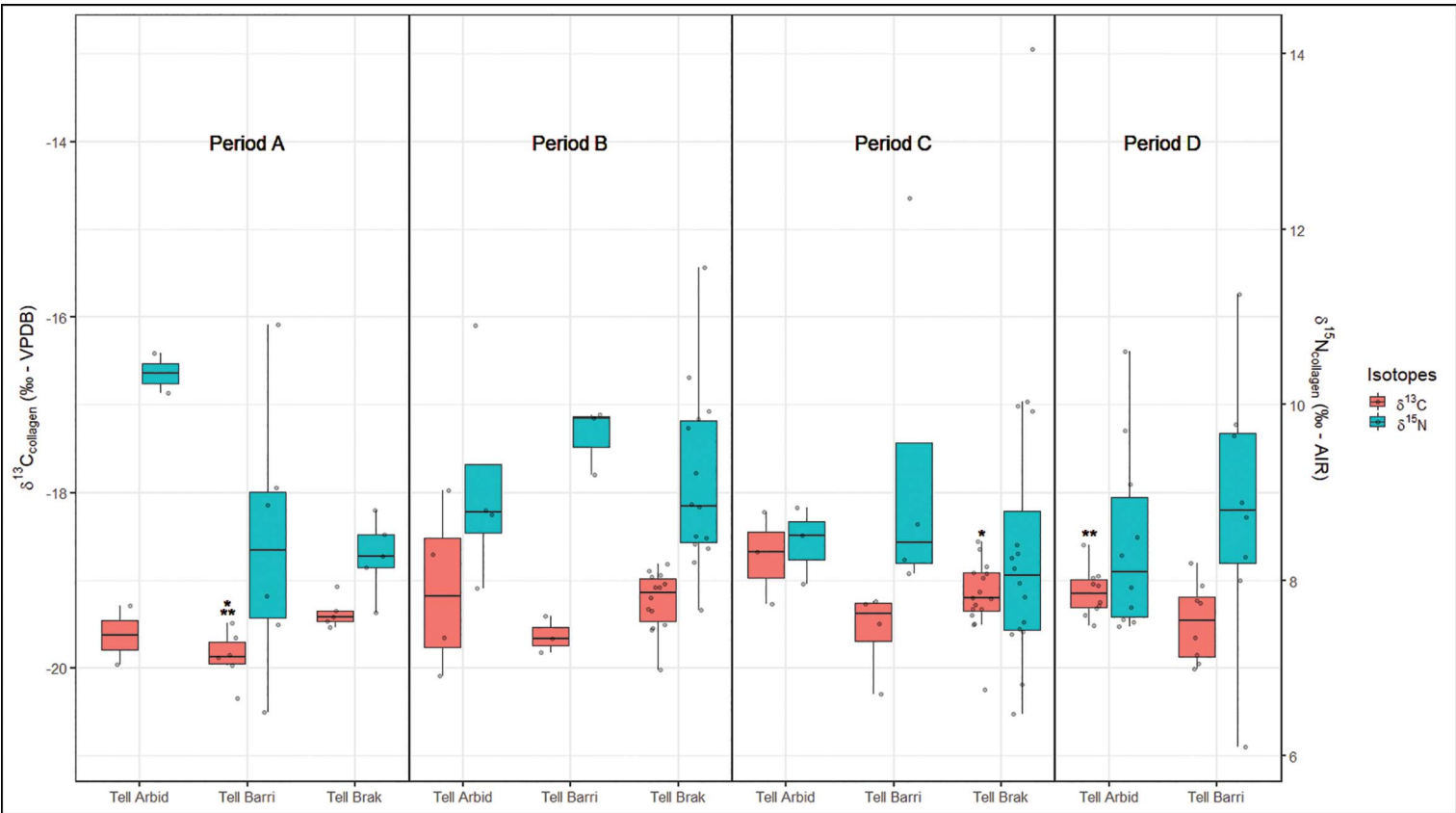


Figure 3. Box plots for human bone and tooth collagen carbon and nitrogen stable isotope values, according to chronological subsets. Boxes represent the interquartile range, whereas whiskers represent a distance corresponding to 1.5× of the interquartile range. The horizontal line represents the median, whereas the circles are the measurement values (figure by R. Fernandes).

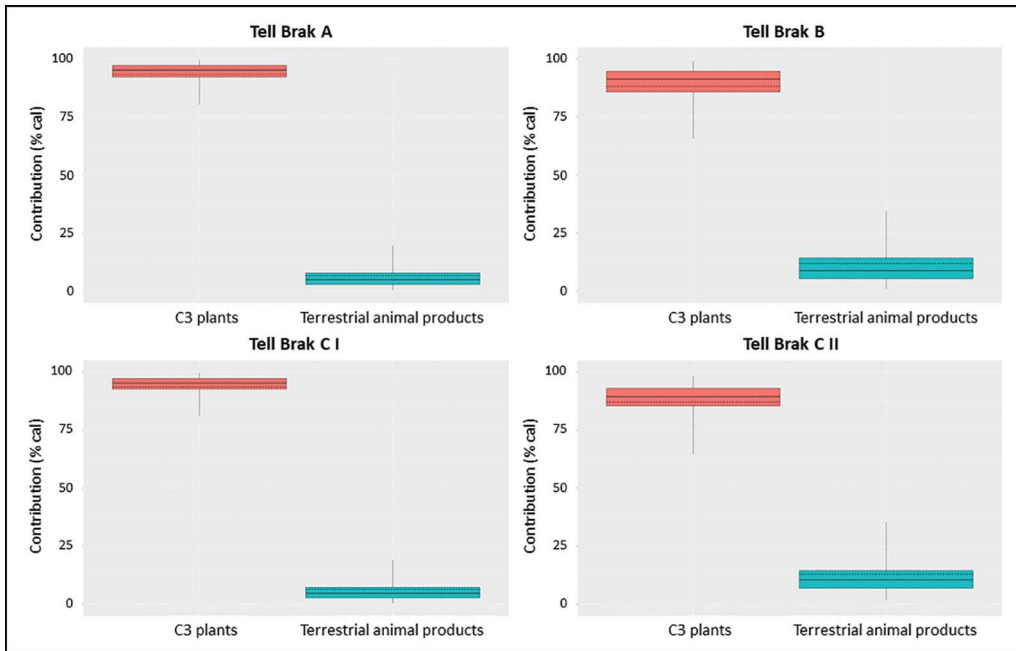


Figure 4. Bayesian caloric estimates for Tell Brak during periods A–C. Period C is divided into estimates for low (I) and high modes (II) of a possible bimodal distribution for human collagen $\delta^{15}\text{N}$ values. Boxes represent a 68 per cent credible interval, while whiskers represent a 95 per cent credible interval. The horizontal lines represent the mean estimate, whereas the dotted horizontal lines represent the median estimates (figure by R. Fernandes).

A shift towards higher $\delta^{13}\text{C}$ values has been observed in modern Bedouins living around the Middle Euphrates Valley (Sołtysiak & Schutkowski 2018), but also during the transition from the Middle to the Late Bronze Age at Tell Barri (Sołtysiak & Schutkowski 2015), suggesting that mobile pastoralism became more important for the local economy. This should not, however, be considered as a necessary consequence of drier climatic conditions, as the comparison is made between sites of different status and no significant difference was observed for $\delta^{15}\text{N}$ values. Lower precipitation may, however, be one of the factors pushing herders beyond the close vicinity of cultivated fields.

Only at Tell Barri during period A is a strong correlation between human collagen $\delta^{13}\text{C}$ and $\delta^{15}\text{N}$ values observed. It therefore seems that subsistence at Tell Barri during period A was characterised by dietary caloric contributions from two well-defined isotopic end members: plant-derived products with comparatively lower $\delta^{13}\text{C}$ and $\delta^{15}\text{N}$ values and animal-derived products with comparatively higher $\delta^{13}\text{C}$ and $\delta^{15}\text{N}$ values. By contrast, the relatively high variability in $\delta^{15}\text{N}$ values observed at other sites—with no significant correlation with $\delta^{13}\text{C}$ values, nor with clear temporal differences that could suggest a climatic change—probably reflects the effects of variable manuring intensity, combined with varying dietary contributions from plant and animal products. Other than Tell Brak during period C, only Tell Arbid during period D showed a significant difference in $\delta^{13}\text{C}$ values when compared with Tell Barri during period A. Acknowledging the small sample size, this may reflect a gradual shift from a practice of stationary animal husbandry to a more mobile form of pastoralism

specifically at Tell Arbid that exploited steppe areas. In this respect, the archaeological and archaeobotanical evidence at this site shows a gradual decrease in settlement size and an increase in the use of drought-resistant barley at the expense of wheat (Smogorzewska 2018); barley has slightly higher average $\delta^{13}\text{C}$ values than wheat (Lightfoot & Stevens 2012). Thus, the combined evidence from Tell Arbid suggests a gradual transition towards a broader economy accompanied by a decrease in population size. This process, however, started centuries before the 4.2 kya event.

Finally, at Tell Brak, Bayesian estimates show the clear predominance of caloric contributions from plant foods during periods A–C (Figure 4). The credible intervals for caloric estimates are wide due to broad uncertainties for food values caused, for instance, by variability in crop manuring. A possible bimodal distribution for $\delta^{15}\text{N}$ values in the period C subset does allow for lower caloric contributions from plants and higher contributions from animal products for a small number of individuals with elevated $\delta^{15}\text{N}$ values. There is, however, considerable overlap in Bayesian dietary estimates for lower and higher $\delta^{15}\text{N}$ individuals. Thus, it is also possible that individuals with higher $\delta^{15}\text{N}$ values were consuming larger quantities of plants that had been manured more intensively. While lower precipitation may also elevate plant $\delta^{15}\text{N}$ values, we should note that the majority of the individuals from Tell Brak period C had comparatively low $\delta^{15}\text{N}$ values. Furthermore, the skeletal remains of most of these individuals were retrieved from a large pit containing mixed, disarticulated human and animal remains and some pottery sherds (Sotysiak 2009). It is therefore possible that the skeletons may represent a mix of populations, which may include non-locals or people buried in an earlier period, and potentially subject to different precipitation conditions and practising different levels of manuring. Period C at Tell Brak witnessed a decrease in population. This could be paralleled by a hypothetical decrease in manuring intensity, which would explain the lower $\delta^{15}\text{N}$ values observed for most individuals; individuals with higher $\delta^{15}\text{N}$ values may have migrated to the site. Future research should test this hypothesis by sampling more individuals and by including other isotopic proxies to investigate human mobility patterns.

Conclusions

Our isotopic analysis of human collagen from three sites in the Khabur Basin shows no evidence to support the hypothesis of a megadrought during the 4.2 kya event, nor of any major and widespread transformations in subsistence strategies during the late third and early second millennia BC. A few lesser temporal differences are apparent in the $\delta^{13}\text{C}$ values, the only specific effect being a possible bimodal distribution of the $\delta^{15}\text{N}$ values at Tell Brak during period C. Overall, our dataset shows a lack of significant isotopic differences between the periods defined at Tell Arbid, Tell Barri and Tell Brak. It therefore seems that, even if a political crisis followed the fall of the Akkadian Empire, the local populations in northern Mesopotamia found ways of coping with its economic consequences, largely retaining their previous subsistence strategies.

Our research indicates that people living in a region where high precipitation variability increased the instability of agriculture were capable of adaptations that made them resilient even to a major climatic shift during the Holocene, to such an extent that no traces of change

in subsistence is recorded in their stable carbon and nitrogen isotopes. While we detected some indications of drier climatic conditions, the absence of evidence of a megadrought during the 4.2 kya event suggests that dry farming agriculture in ancient northern Mesopotamia was a sustainable subsistence strategy. Such resilience, be it following a political crisis or in changing climatic conditions, may inspire those engaged in sustainable agriculture in arid conditions today.

Acknowledgements

Many thanks are due to Raffaella Pierobon-Benoit (the excavator of Tell Barri), to Joan Oates, Augusta McMahon and Geoff Emberling (the excavators of Tell Brak), and to Piotr Bieliński and Rafał Koliński (the excavators of Tell Arbid), for their support of the bioarchaeological research at these sites. We also gratefully acknowledge Andy Gledhill for the isotope measurements.

Funding statement

The research has been financed by the Polish National Science Centre (Narodowe Centrum Nauki; grant 2012/06/M/HS3/00272).

Supplementary material

To view supplementary material for this article, please visit <https://doi.org/10.15184/aqy.2021.117>

References

- AMBROSE, S.H. 1993. Isotopic analysis of paleodiets: methodological and interpretive considerations, in M.K. Sandford (ed.) *Investigations of ancient human tissues: chemical analyses in anthropology*: 1–37. Langhorne (PA): Gordon & Breach.
- BEN-DAVID, M. & E.A. FLAHERTY. 2012. Stable isotopes in mammalian research: a beginner's guide. *Journal of Mammalogy* 93: 312–28. <https://doi.org/10.1644/11-MAMM-S-166.1>
- BOGAARD, A. *et al.* 2013. Crop manuring and intensive land management by Europe's first farmers. *Proceedings of the National Academy of Sciences of the USA* 110: 12589–94. <https://doi.org/10.1073/pnas.1305918110>
- BOND, G. *et al.* 2001. Persistent solar influence on North Atlantic climate during the Holocene. *Science* 294: 2130–36. <https://doi.org/10.1126/science.1065680>
- BROWN, T.A., D.E. NELSON & J.R. SOUTHWORTH. 1988. Improved collagen extraction by a modified Longin method. *Radiocarbon* 30: 171–77. <https://doi.org/10.1017/S0033822200044118>
- BUTZER, K.W. & G.H. ENDFIELD. 2012. Critical perspectives on historical collapse. *Proceedings of the National Academy of Sciences of the USA* 109: 3628–31. <https://doi.org/10.1073/pnas.1114772109>
- CAROLIN, S.A. *et al.* 2019. Precise timing of abrupt increase in dust activity in the Middle East coincident with 4.2 ka social change. *Proceedings of the National Academy of Sciences of the USA* 116: 67–72. <https://doi.org/10.1073/pnas.1808103115>
- CERLING, T.E. *et al.* 1997. Global vegetation change through the Miocene/Pliocene boundary. *Nature* 389: 153–58. <https://doi.org/10.1038/38229>
- CLUTTON-BROCK, J. *et al.* 2001. Faunal evidence, in D. Oates, J. Oates & H. McDonald (ed.) *Excavations at Tell Brak 2: Nagar in the third millennium BC*: 327–52. Cambridge: British School of Archaeology in Iraq.
- COOKSON, E., D.J. HILL & D. LAWRENCE. 2019. Impacts of long-term climate change during the collapse of the Akkadian Empire. *Journal of*

- Archaeological Science* 106: 1–9.
<https://doi.org/10.1016/j.jas.2019.03.009>
- DEE, M.W. 2017. Absolutely dating climatic evidence and the decline of Old Kingdom Egypt, in F. Höflmayer (ed.) *The late third millennium in the ancient Near East: chronology, C14, and climate change* (Oriental Institute Seminars 11): 323–31. Chicago (IL): The Oriental Institute.
- DOBNEY, K., D. JAKES & W. VAN NEER. 2003. Diet, economy and status: evidence from the animal bones, in R. Matthews (ed.) *Excavations at Tell Brak 4: exploring an Upper Mesopotamian regional centre, 1994–1996*: 417–30. London & Cambridge: British School of Archaeology in Iraq & McDonald Institute for Archaeological Research.
- DORNAUER, A. 2017. Bioclimatic and agroecological properties of crop taxa: a survey of the cuneiform evidence concerning climatic change and the Early/Middle Bronze Age transition, in F. Höflmayer (ed.) *The late third millennium in the ancient Near East: chronology, C14, and climate change* (Oriental Institute Seminars 11): 205–35. Chicago (IL): The Oriental Institute.
- EMBERLING, G., H. McDONALD, J. WEBER & H. WRIGHT. 2012. After collapse: the post-Akkadian occupation in the Pisé building, Tell Brak, in H. Weiss (ed.) *Seven generations since the fall of Akkad* (Studia Chaburensia 3): 65–87. Wiesbaden: Harrassowitz.
- FERNANDES, R., M.-J. NADEAU & P.M. GROOTES. 2012. Macronutrient-based model for dietary carbon routing in bone collagen and bioapatite. *Archaeological and Anthropological Sciences* 4: 291–301.
<https://doi.org/10.1007/s12520-012-0102-7>
- FERNANDES, R. *et al.* 2014. Food reconstruction using isotopic transferred signals (FRUITS): a Bayesian model for diet reconstruction. *PLoS ONE* 9: e87436.
<https://doi.org/10.1371/journal.pone.0087436>
- FERNANDES, R., P. GROOTES, M.-J. NADEAU & O. NEHLICH. 2015. Quantitative diet reconstruction of a Neolithic population using a Bayesian mixing model (FRUITS): the case study of Ostorf (Germany). *American Journal of Physical Anthropology* 158: 325–40.
<https://doi.org/10.1002/ajpa.22788>
- FOSTER, B.R. 2016. *The age of Agade: inventing empire in ancient Mesopotamia*. London & New York: Routledge.
<https://doi.org/10.4324/9781315686561>
- GAASTRA, J.S., T.L. GREENFIELD & H.J. GREENFIELD. 2019. Constraint, complexity and consumption: zooarchaeological meta-analysis shows regional patterns of resilience across the metal ages in the Near East. *Quaternary International* 545: 45–62.
<https://doi.org/10.1016/j.quaint.2019.03.013>
- HEDGES, R.E.M. & L.M. REYNARD. 2007. Nitrogen isotopes and the trophic level of humans in archaeology. *Journal of Archaeological Science* 34: 1240–51.
<https://doi.org/10.1016/j.jas.2006.10.015>
- VAN KLINKEN, G.J. 1999. Bone collagen quality indicators for palaeodietary and radiocarbon measurement. *Journal of Archaeological Science* 26: 687–95. <https://doi.org/10.1006/jasc.1998.0385>
- KOLIŃSKI, R. 2011. On grain, bones, and Khabur collapse. *Folia Praehistorica Posnaniensia* 16: 201–17. <https://doi.org/10.14746/fpp.2011.16.07>
- LAWRENCE, D. *et al.* 2016. Long term population, city size and climate trends in the Fertile Crescent: a first approximation. *PLoS ONE* 11: e0152563.
<https://doi.org/10.1371/journal.pone.0152563>
- LIGHTFOOT, E. & R.E. STEVENS. 2012. Stable isotope investigations of charred barley (*Hordeum vulgare*) and wheat (*Triticum spelta*) grains from Danebury Hillfort: implications for palaeodietary reconstructions. *Journal of Archaeological Science* 39: 656–62.
<https://doi.org/10.1016/j.jas.2011.10.026>
- VAN DER MERWE, N.J. 1982. Carbon isotopes, photosynthesis, and archaeology: different pathways of photosynthesis cause characteristic changes in carbon isotope ratios that make possible the study of prehistoric human diets. *American Scientist* 70: 596–606.
- OATES, D., J. OATES & H. McDONALD. 2001. *Nagar in the third millennium BC* (Excavations at Tell Brak 2). Cambridge: British School of Archaeology in Iraq.
- PFÄLZNER, P. 2012. The question of desurbanisation versus reurbanisation of the Syrian Jasirah in the late third and early second millennium BC, in N. Laneri, P. Pfälzner & S. Valentini (ed.) *Looking north: the socioeconomic dynamics of the northern Mesopotamian and Anatolian regions during the late third and early second millennium BC*: 51–80 (Studien Zur Urbanisierung Nordmesopotamiens 1). Wiesbaden: Harrassowitz.

- 2017. Habur Ware and social continuity: the chronology of the Early to Middle Bronze Age transition in the Syrian Jezireh, in F. Höflmayer (ed.) *The late third millennium in the ancient Near East: chronology, C14, and climate change* (Oriental Institute Seminars 11): 163–203. Chicago (IL): The Oriental Institute.
- PIĄTKOWSKA-MAŁECKA, J. & R. KOLIŃSKI. 2006. Animal bone remains from Tell Arbid (north-east Syria), in N. Benecke (ed.) *Beiträge zur Archäozoologie und Prähistorischen Anthropologie* 5: 22–31. Weissach: Beier & Beran.
- PIĄTKOWSKA-MAŁECKA, J. & A. SMOGORZEWSKA. 2010. Animal economy at Tell Arbid, north-east Syria, in the third millennium BC. *Bioarchaeology of the Near East* 4: 25–43.
- R Core Team. 2013. *R: a language and environment for statistical computing*. Vienna: R Foundation for Statistical Computing.
- RIEHL, S. 2010. Plant production in a changing environment: the archaeobotanical remains from Tell Mozan, in K. Deckers, M. Doll, P. Pfälzner & S. Riehl (ed.) *Development of the environment, subsistence and settlement of the city of Urkes and its region* (Studien zur Urbanisierung Nordmesopotamiens 3): 13–158. Wiesbaden: Harrassowitz.
- 2017. Regional environments and human perception: the two most important variables in adaptation to climate change, in F. Höflmayer (ed.) *The late third millennium in the ancient Near East: chronology, C14, and climate change* (Oriental Institute Seminars 11): 237–60. Chicago (IL): The Oriental Institute.
- RIEHL, S., R. BRYSON & K. PUSTOVYTOV. 2008. Changing growing conditions for crops during the Near Eastern Bronze Age (3000–1200 BC): the stable carbon isotope evidence. *Journal of Archaeological Science* 35: 1011–22. <https://doi.org/10.1016/j.jas.2007.07.003>
- SHISHLINA, N., E. ZAZOVSKAYA, J. VAN DER PLICHT & V. SEVASTYANOV. 2012. Isotopes, plants, and reservoir effects: case study from the Caspian steppe Bronze Age. *Radiocarbon* 54: 749–60. <https://doi.org/10.1017/S0033822200047408>
- SMOGORZEWSKA, A. 2018. *Tell Arbid: house and household in a changing town* (PAM Monograph 9). Warszawa: Polish Centre of Mediterranean Archeology, University of Warsaw. <https://doi.org/10.31338/uw.9788323540984>
- SOŁTYSIĄK, A. 2009. Short fieldwork report: Tell Brak (Syria), seasons 1984–2009. *Bioarchaeology of the Near East* 3: 36–41.
- 2010a. Short fieldwork report: Tell Barri (Syria), seasons 2008–2010. *Bioarchaeology of the Near East* 4: 48–50.
- 2010b. Short fieldwork report: Tell Arbid (Syria), seasons 1996–2010. *Bioarchaeology of the Near East* 4: 45–48.
- 2019. Women from Tell Arbid, in A. Pieńkowska, D. Szeląg & I. Zych (ed.) *Stories told around the fountain: papers offered to Piotr Bielński on his 70th birthday*: 639–56. Warszawa: University of Warsaw Press.
- 2020. Bioarchaeology of food production in ancient Mesopotamia, in N. Borrelli & G. Scazzosi (ed.) *After the harvest: storage practices and food processing in Bronze Age Mesopotamia* (Subartu 43): 113–23. Turnhout: Brepols.
- SOŁTYSIĄK, A. & H. SCHUTKOWSKI. 2015. Continuity and change in subsistence at Tell Barri, NE Syria. *Journal of Archaeological Science: Reports* 2: 176–85. <https://doi.org/10.1016/j.jasrep.2015.01.011>
- 2018. Stable isotopic evidence for land use patterns in the Middle Euphrates Valley, Syria. *American Journal of Physical Anthropology* 166: 861–74. <https://doi.org/10.1002/ajpa.23480>
- STAUBWASSER, M. & H. WEISS. 2006. Holocene climate and cultural evolution in late prehistoric–early historic West Asia. *Quaternary Research* 66: 372–87. <https://doi.org/10.1016/j.yqres.2006.09.001>
- STYRING, A.K. *et al.* 2017. Isotope evidence for agricultural extensification reveals how the world’s first cities were fed. *Nature Plants* 3: 17076. <https://doi.org/10.1038/nplants.2017.76>
- UR, J.A. 2010. Cycles of civilization in northern Mesopotamia, 4400–2000 BC. *Journal of Archaeological Research* 18: 387–431. <https://doi.org/10.1007/s10814-010-9041-y>
- 2015. Urban adaptations to climate change in northern Mesopotamia, in S. Kerner, R.J. Dann & P. Bangsgaard (ed.) *Climate and ancient societies*: 69–95. Copenhagen: Museum Tusulanum.
- WALKER, M. *et al.* 2018. Formal ratification of the subdivision of the Holocene series/epoch (Quaternary system/period): two new global boundary stratotype sections and points (GSSPs)

- and three new stages/subseries. *Episodes* 41: 213–23.
<https://doi.org/10.18814/epiugs/2018/018016>
- WEISS, H. 2016. Global megadrought, societal collapse and resilience at 4.2–3.9 ka BP across the Mediterranean and West Asia. *Past Global Change Magazine* 24: 62–63.
<https://doi.org/10.22498/pages.24.2.62>
- WEISS, H. *et al.* 1993. The genesis and collapse of third millennium north Mesopotamian civilization. *Science* 261: 995–1004.
<https://doi.org/10.1126/science.261.5124.995>
- WILKINSON, T.J. 1997. Environmental fluctuations, agricultural production and collapse: a view from Bronze Age Upper Mesopotamia, in H.N. Dalfes, G. Kukla & H. Weiss (ed.) *Third millennium BC climate change and Old World collapse*: 67–106. Berlin: Springer.
https://doi.org/10.1007/978-3-642-60616-8_4