

PREHOSPITAL and DISASTER MEDICINE

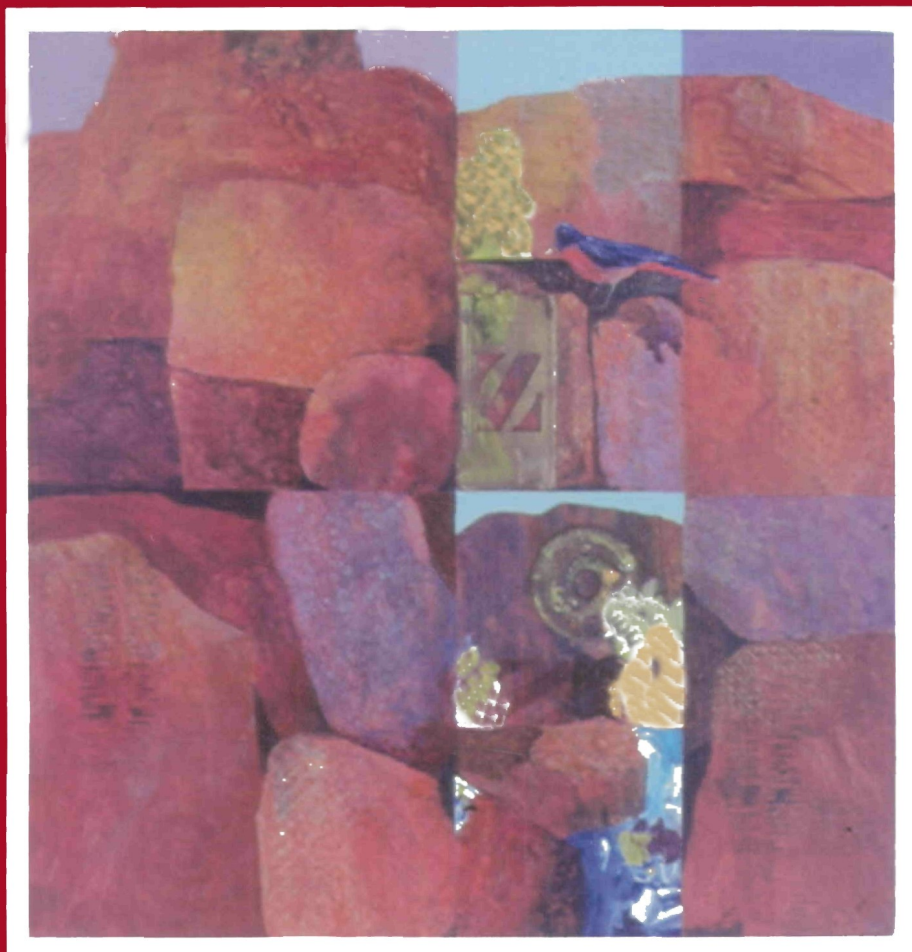
Médecine Pré-Hospitalière et Médecine de Catastrophe

Medicina Prehospitalaria y de Catástrofes

病院にかかる前の処置と
災害医療

Volume 21, Number 4

July–August 2006



<http://pdm.medicine.wisc.edu>

The Official Journal of the
World Association for Disaster and Emergency Medicine
and the
Nordic Society of Disaster Medicine



⚠ THE "DIDN'T YOU PUT THE DEFIBRILLATOR AWAY?" TEST ⚠

Test subject is the first defibrillator designed specifically to endure the crash-tumble-bounce world of EMS. Test subject's efficient shape and size make it easier to stow and carry, while rugged roll bars help ensure its survival when left unstowed and prone to the occasional accident. Today's test is designed to illustrate the ability of the E Series™ to meet extreme shock and vibration challenges—like the kind that might be experienced if it's left behind on the road.



Unique roll bar protects electronics and ensures the E Series will roll with the toughest punches.



ZOLL's Rapid Cable Deployment System™ eliminates those annoying "cable spaghetti" problems.



ZOLL's EasyRead Tri-Mode Display™ offers maximum readability even in the most adverse conditions. Choose from three different screen options on-the-fly to optimize visibility for any given situation.



E Series—We put it through the wringer in the lab so you can be sure it will survive whatever you put it through in the field.



E SERIES™
ZOLL
 Advancing Resuscitation. Today.™

⚠ For additional details on how the new E Series can stand up to—and live up to—your "worst case scenarios," contact your ZOLL sales rep today or call 800-804-4356.

Table of Contents

Editor's Corner

- Accentuate the Positive** 221
Marvin L. Birnbaum, MD, PhD

Original Research

- Transient Modeling in Simulation of Hospital Operations for Emergency Response** 223
Jomon Aliyas Paul, PhD; Santhosh K. George, MS; Pengfei Yi, PhD; Li Lin, PhD

- Anti-personnel Landmine Injuries during Peace: Experience in an European Country** 237
*Stamatios A. Papadakis, MD, PhD; Eleni C. Babourda, MD; Thomas C. Mitsitskas, MD;
 Sotirios Markakidis, MD; Costas Bachtis, MD; Koukouvris Dimitrios, MD; Apostolos A. Tentis, MD, PhD*

- Reanimation Unit Experience of a Second-Level Hospital in Mexico City** 242
Jorge Loria-Castellanos, MD; Juan Manuel Rocha-Luna, MD; Guadalupe Márquez Ávila

- What a Disaster?! Assessing Utility of Simulated Disaster Exercise and Educational Process for Improving Hospital Preparedness** 249
*Bruce H. Bartley, MB, BS, FRCSE, FACEM; Julian B. Stella, MS, BS, FACEM;
 Liam D. Walsh, MB, BS, FACEM*

Special Report

- Weapons of Mass Destruction Preparedness and Response for the XIV Pan-American Games, Santo Domingo, 2003** 256
*Amado Alejandro Báez, MD, MSc; Matthew D. Sztajnkrzyer, MD, PhD; Ediza M. Giráldez, MD;
 Hugo Pérez Comprés, MD*

Brief Report

- Paramedic Student Performance: Comparison of Online with On-Campus Lecture Delivery Methods** 261
Michael W. Hubble, PhD, NREMT-P; Michael E. Richards, MD, MPA

- Medical Preparedness Against Chemical and Biological Incidents for the NATO Summit in Istanbul and Lessons Learned** 268
Levent Kenar, MD, PhD; Turan Karayilanoglu, Pharm, PhD

- Using Innovative Simulation Modalities for Civilian-Based, Chemical, Biological, Radiological, Nuclear, and Explosive Training in the Acute Management of Terrorist Victims: A Pilot Study** 272
*Italo Subbarao, DO, MBA; William F. Bond, MD; Christopher Johnson, DO; Edburt B. Hus, MD, MPH;
 Thomas E. Wasser, PhD, Med*

- Prevalence of Radioactive Signals from Surveillance of an Emergency Department** 276
Frank Guyette, MD, MS; Joe Suyama, MD; Jerry Rosen, MS; Michael Allswede, DO

Special Report

- Medical Support during the European Union Summit in Gothenburg, Sweden, June 2001** 282
*Kristina M.C. Johnsson, MD; Per A. Örtengwall, MD, PhD; Anne-Lii H. Kivi, RN;
 Annika H.E. Hedlin, RN*

Editorial Comments

- Difficult Discussions: Military Intervention and United Nation Reform**286
Frederick M. Burkle, Jr., MD, MPH

Editorial Office

University of Wisconsin-Madison USA

Editor-in-Chief

Marvin L. Birnbaum, MD, PhD

Editorial Assistant

Dana Schmidman

Production Editor

Dana Schmidman

Advertising

Mary Duss

Subscriptions

Janis Baun

Web Editors

Jackson Helmer

Carolyn Lowry

Dana Schmidman

Editorial Interns

Sarah Covington, *Lead Intern*

Josie Caves

Jackson Helmer

Publisher

World Association for Disaster and
Emergency Medicine
Madison, Wisconsin USA

Prehospital and Disaster Medicine (ISSN 1049-023X) is published bimonthly in the months of January, March, May, July, September, and November by the World Association for Disaster and Emergency Medicine. *Prehospital and Disaster Medicine* incorporates the *Journal of the World Association for Emergency and Disaster Medicine* and the *Journal of Prehospital Medicine*.

Editorial Information: Submit manuscripts and editorial inquiries to: Marvin L. Birnbaum, PhD, MD, Editor, *Prehospital and Disaster Medicine*, Clinical Science Center, 600 N. Highland Ave, Mail Code 6733, Madison, WI 53792 USA; Telephone (+1) (608) 263-9641; Facsimile (+1) (608) 265-7095; E-mail: mlb@medicine.wisc.edu or pdm@medicine.wisc.edu.

Subscription Information: One year (six issues)—Institutions: [US] \$400; Individuals: \$100; International subscribers add \$6 per year for postage. Claims of non-receipt or damaged issues must be filed within three months of cover date. POSTMASTER: Send address changes to *Prehospital and Disaster Medicine*, PO Box 55158, Madison, WI 53705-8958 USA.

Advertising Information: Mary Duss; *Prehospital and Disaster Medicine*, Clinical Science Center, 600 N. Highland (6733), Madison, WI 53792 USA; E-mail: pdm@medicine.wisc.edu.

Comprehensively indexed by the National Library of Medicine (MEDLINE), Cumulative Index to Nursing and Allied Health (CINAHL) and Health Star Cumulative Index. The database is available online via BRS, Data-Star, and DIA-LOG, and on CD-ROM through CD Plus, Compact Cambridge and Silver Platter. Abstracts and search capability available on the Internet at <http://pdm.medicine.wisc.edu>.

Copyright © 2006 by the World Association for Disaster and Emergency Medicine. Periodicals postage paid at Madison, WI and at additional mailing offices.

STATEMENT OF OWNERSHIP

Statement of Ownership – Management and Circulation – Required by 39 U.S.C. 3685

1. Publication title: *Prehospital and Disaster Medicine*
2. Publication number 1049-023X
3. Filing date: 06 October 2005
4. Issue frequency: Bi-Monthly
5. Number of issues published annually: 6
6. Annual subscription price: \$100 Individual/\$400 Institution
7. Mailing address of known office of publication: 3330 University Avenue, Suite 300, (Dane County) Madison, WI 53705-2167 USA
8. Mailing address of the headquarters of the general business office of the publisher: Same
9. Publisher: The World Association for Disaster and Emergency Medicine, 3330 University Avenue, Suite 300, (Dane County) Madison, WI 53705-2167 USA, Editor: Marvin L. Birnbaum, 3330 University Avenue, Suite 300, Madison, WI 53705-2167 USA
10. Owner: World Association for Disaster and Emergency Medicine, 3330 University Avenue, Suite 300, Madison, WI 53705 USA
11. Known: bondholders, mortgages, and other security holders owning or holding 1 percent or more of total amount of bonds, mortgages or other securities: None
12. The purpose and function and nonprofit status of this organization and the exempt status for federal income tax purposes have not changed during the preceding 12 months.

Extent and Nature of Circulation:

- A. Total copies: 1,000-avg. per issue during preceding 12 months/1,000 last issue
- B. Paid/Requested Circulation: Outside country mail subscriptions 175
- C. Others mailed through USPS 236. Free distribution outside the mail 6
- D. Copies not immediately distributed 325 (used for education and promotion)

I certify that all information furnished is true and complete.

Marvin L. Birnbaum, MD, PhD, Editor-in-Chief and Director of the WADEM Business Office

ADVERTISING POLICY AND GUIDELINES

General Statement

Prehospital and Disaster Medicine (PDM) is a scientifically based, peer-reviewed, medical journal. It is the policy of the Editorial Board of PDM that all advertising material be sound scientifically, and thus, meet the following guidelines:

1. Claims must be supported scientifically, and references provided—either within the advertisement or made available upon request;
2. Every effort must be directed to minimize the likelihood of possible erroneous interpretations of the claims; and
3. Advertisements should be aimed at a sophisticated, medical audience.

Further information and rates available at our Website: <http://pdm.medicine.wisc.edu>.

Review

Each advertisement considered for publication is submitted to the Editorial Office for review. Any advertisement that does not meet the guidelines will be returned to the advertiser with suggestions for revisions; the Editorial Office is available for consultation.

Use of these guidelines and the process used for review add to the credibility of PDM and of the product. Questions may be directed to Marvin L. Birnbaum, MD, PhD, Editor-in-Chief; (+1) (608) 263-9641; E-mail: mlb@medicine.wisc.edu.

INFORMATION FOR READERS

Subscription Prices (6 issues)

Institutional	[US]	\$400
Individual		\$100

"Institutional Subscribers" are defined as multiple reader subscribers and include public and private libraries, schools, hospitals, and clinics; city, county, state, provincial, and national government bureaus and departments; and all commercial and private institutions and organizations.

Individual subscriptions must be in the name of, billed to, and paid by individuals.

Send all subscription orders and questions to: *Prehospital and Disaster Medicine*, PO Box 55158, Madison, WI 53705-8958 USA.

Subscription by E-mail: pdm@medicine.wisc.edu; call (+1) (608) 263-2069; or fax (+1) (608) 265-3037. Credit cards are welcome.

Change of Address or Missing Issues

Inform the *Prehospital and Disaster Medicine* office as soon as possible when you plan to move. (Four to six weeks notice is required for uninterrupted service.) Send (1) old address; (2) new address; and (3) effective date of change.

Back Issues

A limited supply of back issues not included in your subscription is available. Available back issues are listed on the website or a list can be obtained without charge from the *Prehospital and Disaster Medicine* office.

Online Version

Issues are posted on the *Prehospital and Disaster Medicine* website. Except for the two most current issues, articles can be downloaded without charge. The two most current issues are password protected for subscribers.

Abstracts

All of the abstracts of papers through the most recent volume are available on the *Prehospital and Disaster Medicine* Website.

Cover Artwork:	<i>Canyon Corridor</i>
Media:	Mixed Media on Panel
By:	Helen Gwinn

Addendum
 The artwork included on the cover of 21-3 is a piece by Ann Wyndham called *Camel Crossing Australia*. Ann can be contacted at: artdivas@gallery.com or koalacolours@wt.net. The Editorial Staff apologizes for this omission.

INSTRUCTIONS FOR AUTHORS

Organization of Manuscripts

Manuscripts in one of five different categories can be submitted for review and publication in *Prehospital and Disaster Medicine* (PDM): (1) Original Research; (2) Special Report; (3) Comprehensive Review; (4) Case Report; or (5) Brief Report. All manuscripts submitted for publication must include an abstract that summarizes the work. Other types of manuscripts must have the approval of the Editor before being submitted or may be invited by the Editor or a member of the Editorial Board. All Abstracts submitted by the Secretariat of a Congress will be edited by the Editorial Staff into the best English possible prior to publication. The characteristics specific to each of these categories are described briefly below:

1. **Original Research**—structured research that uses quantitative and/or qualitative data collection and processing methods to establish a hypothesis or prove a cause:effect relationship(s) is included in this category. The manuscript must be structured as follows:

Abstract—Concise summary in the following format (*not to exceed 375 words*):

Introduction: need for the study.

Hypothesis/Problem: what was tested (experimental studies only) If qualitative, statement of problem addressed.

Methods: summary of methods used with subsections as appropriate (type of subjects, number of subjects, study design, statistical tests). If the work is qualitative, the types of instruments used and the scope and type of work must be described. *If a disaster is involved, the dates, type of event, location, scope, magnitude, and numbers of casualties and deaths must be summarized in tabular form for indexing.*

Results: summary of principal findings.

Conclusion: implications of findings.

Introduction—Provide justification for the effort with appropriate references annotated. If quantitative, the concluding sentence should define the hypothesis. If qualitative, the problem being addressed should be stated clearly.

Methods—Descriptive to a degree that other investigators would be able to reproduce the study. Statistical methods used must be annotated. Approval by an Institutional Review Committee **must** be included when appropriate.

Results—Results must be written in text and may be accompanied by tables and figures. The text **must** explain all data included in tables and figures, but should not be redundant. All direct results from the study must appear in this section. *No discussion of the results may be included.*

Discussion—The Discussion should provide an interpretation of the Results in terms of meaning and application. Results should not be repeated. Computations or extrapolations that may help explain the results may be provided. Limitations of the study should be defined and suggestions for future research should be included. References that support or negate explanations provided are appropriate.

Conclusion—The findings in terms of implications for the practice of prehospital, emergency, and/or disaster medicine should be summarized in a few sentences.

2. **Special Report**—Describes some aspect of our science or activities that provide information necessary for the progression of the science. The *Introduction* should highlight the problem being addressed and the reasons that it needs to be addressed. Sections of

the report should be subtitled. The presentation should include citations as to the sources of the material and should be followed by a *Discussion* that includes the significance of the report in terms of the science. The manuscript should be finished with the *Conclusions* reached.

3. **Comprehensive Review**—A review of the literature to be used to clarify areas in which there seems to be disagreement. Comprehensive Reviews seek to establish the evidence-base for the area being addressed. The format used should be identical to that described for Special Reports.
4. **Case Report**—Uses one or more cases of specific patients or events/responses to highlight a current aspect of medical care or of a phenomenon. Case Reports also may have value in the development of definitive research projects by the same or other investigators. The *Introduction* should describe the reasons for the report. The actual *Case Report(s)* should be described in the next section, and like the above, the *Discussion* should describe the significance of the reports including a comprehensive review of the pertinent literature. The *Conclusion* should be similar to the format noted above.
5. **Brief Report**—A short report that may predict a trend, but the work does not meet all of the criteria required for Original Research. Preliminary reports also are included in this category. The format used should be identical to that used for the Original Research described above.

General Submission Requirements

Manuscripts—Manuscripts are preferred in electronic form (disk, CD, or e-mail) with a cover letter, cover page, and manuscript. Electronic format: the cover letter, cover page, and manuscript should be sent as separate electronic files on one diskette or CD in Word or WordPerfect. Please label the diskette or CD and include the paper's title and the primary author's surname. Electronic files may be submitted to our office via e-mail to the following address: ds5@medicine.wisc.edu or pdm@medicine.wisc.edu. If the manuscript is submitted by mail, please include paper version of the cover letter, cover page, and one paper copy of the manuscript to accompany the disk. If submitting the article in paper form only, please send one cover letter, the cover page, and manuscript. If electronic format is not available, we will accept manuscripts in paper form.

Previous Publication—A manuscript will be considered only if it has not been published previously and is not under consideration for publication elsewhere.

Copyrights—After acceptance for publication, the copyright to the manuscript, including all tables and figures, rests with *Prehospital and Disaster Medicine*.

Cover Letter—Each manuscript should be accompanied by a signed cover letter from the primary author who attests to the original nature of the material, that the paper has not been published elsewhere, is not under consideration by any other publication, and that the authors agree to transfer copyright to *Prehospital and Disaster Medicine* if

accepted for publication. The institution(s) in which the work was performed, the sponsoring institution(s), and the respective departments must be annotated. If the work was supported all or in part by grants or endowments, the granting institution(s) should be indicated. If the paper has been, or is to be presented in a forum orally or as a poster, indicate the title of the forum, sponsoring institution, and the date of presentation. Specify the name of the author with whom any correspondence should be directed, and, correspondence street address, telephone number, facsimile (fax) number, and e-mail address if appropriate.

Cover Page—Include a cover page that includes the title of the paper, first names, middle initials, last names, and highest academic degrees of all authors. Reiterate from the cover letter the name of the author with whom any correspondence should be directed and the street address, telephone number, facsimile (fax) number, and e-mail address if appropriate. Do not indicate author names or institutions anywhere in the manuscript other than on the cover page.

Language—All manuscripts must be submitted in English. Also, do not use I, We, or Our when describing the researchers. The fact that the research was conducted by the authors is implicit.

Abbreviations for groups of words may be used only for unusually cumbersome titles or for commonly accepted abbreviations. Whenever such abbreviations are used, they must be annotated with the initial mention of words within the manuscript followed by the abbreviation in parentheses. In addition, list eight or more keywords or phrases in alphabetical order separated by semicolons to facilitate indexing or electronic searches.

Paper, Margins, and Type Style—Manuscripts should be submitted on plain white paper, letter size up to A4, 8.27" by 11.69" (210 mm by 297 mm). Do not right justify the margins. Use standard type styles. Double space all text.

Generic Names—Whenever possible, use generic names. Brand names may be indicated parenthetically and the name and location of the manufacturer must be provided in parentheses followed by a generic description of the medication, drug, product, or equipment.

References—References **must** be cited in the sequential order in which they appear in the text. All references should be parenthetically cited by full-sized Arabic numbers in the text, tables, and legends for illustrations. Repeated use of a reference must bear the number

of the first time this reference is used. Titles of journals referenced must be annotated using standard Index Medicus abbreviations and must be underscored. Unpublished data or personal communications should be indicated in parentheses directly following the reference and should include the dates of such correspondence (Personal Communication, Safar P, October 1989). The following format for references **must** be used:

Journals—White SJ, Hamilton WA, Veronesi JF: Comparison of field techniques used to pressure infuse intravenous fluids. *Prehosp Disast Med* 1991;6:429–434.

Books—Schwartz GR, Safar P, Stone JH, et al (eds), *Principles and Practice of Emergency Medicine*. 2d ed. Philadelphia: WB Saunders Co., 1985, pp 1198–1202.

Chapters—Lindberg R: Pathology of Head Injuries. In: Cowley RA, Trump BF (eds), *Pathophysiology of Shock*. Baltimore: Williams and Wilkins, 1982, pp 588–592.

Website—International Crisis Group: Impact of the Bali bombings. Available at http://www.crisisweb.org/projects/asia/indonesia/reports/A400804_24102002.pdf. Accessed 09 June 2003.

Tables—Tables must be numbered as referenced in the text and each typed on a separate page, placed at the end of the manuscript. Do not include tables in the body of the text.

Figures—Illustrative materials **must** be of professional quality, should be submitted as large as possible, up to 8.27" by 11.69" (A4 210 mm by 297 mm), and be **at least 600 dpi resolution**. Color illustrations must be discussed with the editor. All graphs and charts must be saved in a JPG/TIFF format and are to include a legend. Photos also can be mailed. They must be high-gloss and 600 dpi.

Permissions—Illustrations or tables from other publications must be accompanied by written permission from the author and publishers of the document in which they originally appeared.

Publication Schedule—Manuscripts should be published within 4 to 6 months of acceptance and receipt of revisions.

Additional Information

Contact Marvin L. Birnbaum, MD, PhD, Editor, *Prehospital and Disaster Medicine*, Clinical Science Center, 600 N. Highland (6733), Madison, WI 53792 USA, Express Mail/FedEx, mail to: 3330 University Avenue, Suite 300, Madison, WI 53705 (+1) (608) 263-9641; E-mail: mlb@medicine.wisc.edu.

Visit our Website: <http://pdm.medicine.wisc.edu>.

EDITORS-IN-CHIEF

Marvin L. Birnbaum, MD, PhD

University of Wisconsin-Madison
Madison, Wisconsin USA

ASSOCIATE EDITORS

Wolfgang Dick, Dr Med
Johannes Gutenberg Universität
Mainz, Germany

P. Gregg Greenough, MD, MPH

Director of Research, Harvard
Humanitarian Initiative
Boston, Massachusetts USA

Kimball Maull, MD

Carraway Injury Control
Institute
Birmingham, Alabama USA

Steven Rottman, MD

University of California-
Los Angeles
Los Angeles, California USA

Samuel Stratton, MD

University of California-Irvine
Los Angeles, California USA

SECTION EDITORS

**International Health Law
and Ethics**

Michael Hoffman, JD
Washington, DC USA

PAST EDITORS

Peter Safar, MD
Deceased
(JWAEDM 1981-1985)

R. Adams Cowley, MD

Deceased
(JWAEDM 1986-1987)

CONSULTING EDITORS

Peter Baskett, MD

Editor: *Resuscitation*
Frenchay Hospital
Bristol, UK

S. William A. Gunn, MD

European Centre for Disaster
Medicine
Geneva, Switzerland

Ronald Stewart, MD

Victoria Hospital
Halifax, Nova Scotia Canada

EDITORIAL BOARD

Jakov Adler, MD

Jerusalem, Israel

Ahmed Ammar, MD

King Fahd Medical Complex
Riyadh, Saudi Arabia

V. Anantharaman, MD

Singapore General Hospital
Singapore

Frank Archer, MD

Monash University
Melbourne, Australia

Jeffrey Arnold, MD

Medical Director, Emergency
Department
Medical Director of Quality
Natividad Medical Center
Salinas, California USA

Richard A. Bissell, PhD

University of Maryland-
Baltimore County
Baltimore, Maryland USA

David A. Bradt, MD, MPH

Royal Melbourne Hospital
Melbourne, Australia

Fredrick M. Burkle, MD, MPH

Johns A. Burns School of
Medicine
Houston, Texas and Honolulu,
Hawaii USA

Felipe Cruz-Vega, MD

Social Security
Mexico City, Mexico

Richard O. Cummins, MD

University of Washington
Seattle, Washington USA

Craig DeAtley, PA-C

George Washington University
Medical Center
Washington, DC USA

Claude de Ville de Goyet

Consultant WHO/PAHO

Judith Fisher, MD

Consultant, Disaster Medicine
Pleasant Hill, California USA

Malcolm Fisher, MD

Royal North Shore Hospital
Sydney, Australia

Erik S. Gaul

George Washington University
Washington, DC USA

Michael Gunderson

Health Analytics
Lakeland, Florida USA

Keith Holtermann, MD

George Washington University
Washington, DC USA

Mark S. Johnson, MPA

Retired Chief of EMS
Juneau, Alaska USA

Mark Keim, MD

Centers for Disease Control
and Prevention
Atlanta, Georgia USA

Mark Klyachko, PhD

Center on Earthquake
Engineering
Petropavlovsk, Kam, Russia

Per Kulling, MD

National Board of Health and
Welfare
Stockholm, Sweden

**Baxter Larmon, PhD,
EMT-P**

University of California-
Los Angeles Medical Center
Los Angeles, California USA

Todd J. LeDuc, EMT-P

Deputy Fire Chief
Broward Sheriff Fire Rescue
Ft. Lauderdale, Florida USA

Gloria Leon, PhD

Professor of Psychology
University of Minnesota
Minneapolis, Minnesota USA

Mauricio Lynn, MD

Miami, Florida USA

Graeme McColl

St. John Ambulance Service
Christchurch, New Zealand

Susan D. McHenry

National Highway Traffic
Safety Administration
Washington, DC USA

Eric Noji, MD

Centers for Disease Control
and Prevention, Atlanta,
Georgia
Washington, DC USA

Paul Paris, MD

Center for Emergency
Medicine
University of Pittsburgh
Pittsburgh, Pennsylvania USA

Georg Petroianu, MD

University of Heidelberg
Mannheim, Germany

Edward Ricci, PhD

University of Pittsburgh
Pittsburgh, Pennsylvania USA

Daniel Rodriguez, MD

San Jose, Costa Rica

Leonid B. Roshal, MD

Institute of Pediatrics
Academy of Medical Sciences
Moscow, Russia

Don Schramm

University of Wisconsin-Madison
Madison, Wisconsin USA

Edita Stok, MD

Ministry of Health
Ljubjana, Slovenia

Knut Ole Sundnes, MD

Baerum Hospital
Oslo, Norway

Takashi Ukai, MD

Hyogo Emergency Medical
Center
Hyogo, Japan

Michael Van Rooyen, MD

Associate Professor, Harvard
Medical School, Brigham
and Women's Hospital
Boston, Massachusetts USA

Yasuhiro Yamamoto, MD

Department of Emergency and
Critical Care Medicine
Tokyo, Japan