

**GELLER
MICROANALYTICAL
LABORATORY**

- ANALYTICAL SERVICES -

AUGER ELECTRON SPECTROSCOPY

- Surface Analysis
- Depth Profiles
(with rotation)
- Line Profiles
- Taper Sections

Auger/SEM/X-ray Imaging
X-ray Analysis

Difficult analyses our specialty!
STATE OF THE ART EQUIPMENT
MANUFACTURER OF UHV STANDARDS

One Intercontinental Way
Peabody, MA 01960 617-535-5595

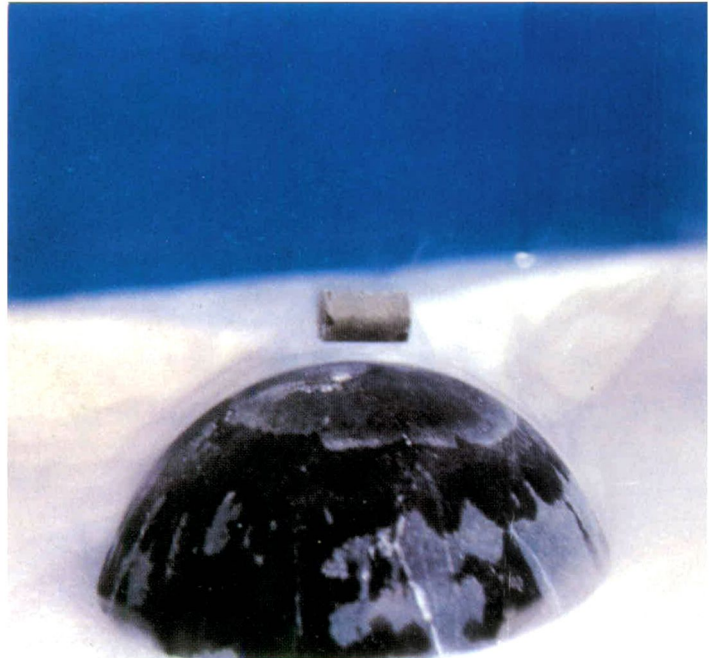


**GELLER
MICROANALYTICAL
LABORATORY**

- STANDARDS -

SiO ₂		Ta
Si	36 Elements - UHV Compatible	Th
Rh	for use with	Sn
Pt	AUGER, ESCA, ELECTRON	Ti
Pd	PROBE, SEM/EDAX	W
Nb	Standard Holder Size:	V
Ni	1" dia x .317" high	Y
Mg	Custom Sizes/Standards Available	Zn
Mo	- also offering -	Zr
Mn	AUGER/SEM/EDAX	Re
Al	Analytical Services	Ce
Be	One Intercontinental Way	
B	Peabody, MA 01960 617-535-5595	
Cd		
Cr		
Co		
C		
Cu		
Ge		
Au		
In		
Ir		
Fe		
Pb		
Ag		

Figures appearing in the EDITOR'S CHOICE are those arising from materials research which strike the editor's fancy as being aesthetically appealing and eye-catching. No further criteria are applied and none should be assumed. When taken out of context, such figures often evoke images beyond and unrelated to the original meaning. Submissions of candidate figures are welcome and should include a complete source citation, a photocopy of the report in which it appears (or will appear), and a reproduction-quality original drawing or photograph of the figure in question.

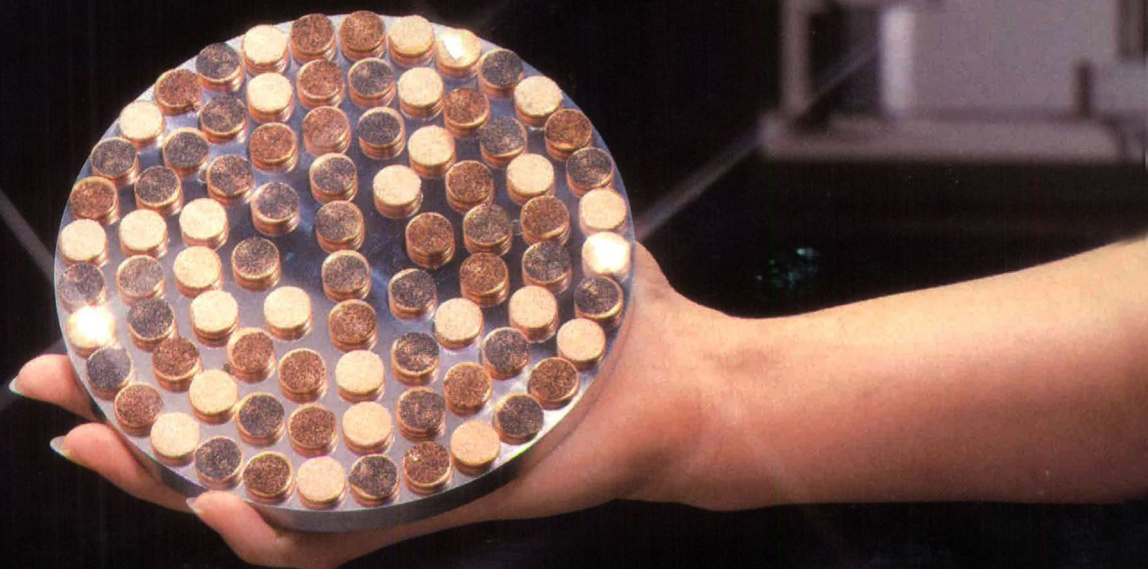


For this month's EDITOR'S CHOICE we are compelled to depart from our own criteria, i.e., that figures should have been published in a journal or retrievable report. This issue's choice is also, by now, in a generic sense the ubiquitous symbol of high temperature superconductivity—a small permanent magnet levitated above a ceramic oxide superconductor cooled below T_c by liquid nitrogen. This particular "pose" of the common subject, however, elicits a surreal impression of a magnetic "satellite" in orbit above a superconducting "planet." The cloud-like condensation above the obscured cryogen and blue sky-like background add an eerie atmosphere, but they also confirm that this planet is not in the outer space we know, where skies are black and planets may be covered by but do not float on clouds. The photograph was contributed by Dr. Shu-en Hsu, Director of the Materials R&D Center at the Chung Shan Institute of Science and Technology, Taiwan, China. □



64 samples.
EDS analyses, linescans, x-ray maps,
particle counting, sizing and image archiving.
Automatically.
Unattended.
Overnight.

**That's
productivity!
That's ADEM!**



ADEM* from Tracor Northern is the only totally integrated, totally automated SEM, EDS analyzer and image processor. The specimen chamber allows large volume samples to be examined. The high capacity air lock allows samples to be exchanged without venting the column. And because of ADEM's integrated design, automation is the most sophisticated available today. The end result of ADEM's advanced design is **productivity**.

**Tracor / Electron
Beam
Instruments**

A DIVISION OF TRACOR NORTHERN
2551 WEST BELTLINE HIGHWAY
MIDDLETON, WISCONSIN 53562
(608) 831-6511
FAX- 608 836-7224
TWX- 910 280-2521

Please visit booth no. 102
at the MRS Show in Reno, April 5-7, 1988.

*Automated Digital Electron Microscope