

---

**INDEX TO ADVERTISERS**

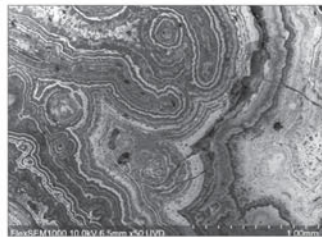
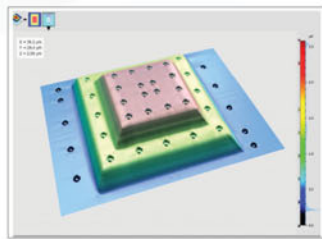
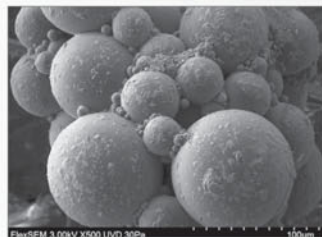
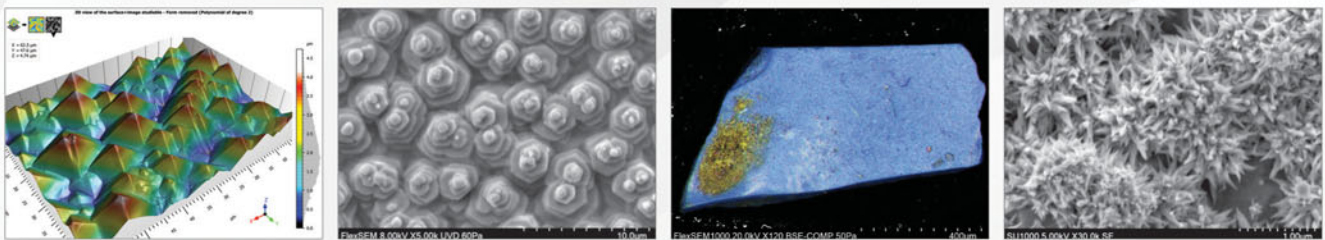
---

Diatome	Cover 3, A10
EDAX	A8, A11
Electron Microscopy Sciences, EMS	Cover 2, A7
Hitachi	Cover 4, A9
Panasonic i-Pro	A4

---

# Competitive Performance, Compact Package—The FlexSEM 1000 II VP-SEM

The Hitachi FlexSEM 1000 II Scanning Electron Microscope features big power in a small package with the highest in-class resolution of 4.0 nm, user-friendly operation, and many automated functions that enable high-quality data acquisition for beginners to experts alike. With integrated space saving technology, the FlexSEM 1000 II allows users to have the capabilities of a full-sized SEM in a compact, efficient package.



Minerology

Polymers

3-D & CLEM

Materials

Electronics

Biology



FlexSEM 1000 II Scanning Electron Microscope

Contact Us for a Virtual Demonstration at [hta-microscopy@hitachi-hightech.com](mailto:hta-microscopy@hitachi-hightech.com)

**Hitachi High-Tech America, Inc.**

[www.hitachi-hightech.com/us](http://www.hitachi-hightech.com/us)

[hta-microscopy@hitachi-hightech.com](mailto:hta-microscopy@hitachi-hightech.com)

Tel. 800-253-3053

*Hitachi Social Innovation is*

**POWERING GOOD**



# DIATOME

## Diamond Knives

### at the forefront of cryo innovation.



cryo 25°,  
35°, 45°

Available for wet or dry sectioning.

#### DIATOME DIAMOND KNIVES FOR CRYO APPLICATIONS:

##### cryo immuno

The first cryo knife with a diamond platform, guarantees the best possible sectioning for cryo-immuno-chemistry.



##### trimtool 20, 45, and 90

One trimming tool for all of your trimming needs, be it at room or cryo temperatures.



##### histo cryo

Available as boats for wet cryo sectioning, and triangular holders for dry cryo sectioning. Made of a special copper/nickel alloy, which guarantees the best heat/cold transmission.

##### cryo AFM

Specially tested to ensure that they meet the increased quality requirements of AFM investigation.



## DIATOME U.S.

P.O. Box 410 • 1560 Industry Rd.  
Hatfield, Pa 19440

Tel: (215) 412-8390 • Fax: (215) 412-8450  
email: [info@diatomeknives.com](mailto:info@diatomeknives.com)

Please visit our website  
for our complete range of  
Diamond Knives.

[www.diatomeknives.com](http://www.diatomeknives.com)



# Recharge Your **Lithium** Research



## Enabling quantitative mapping of **lithium** in the SEM

For the first time, lithium distribution in a lightweight MgLiAl structural alloy is mapped in the scanning electron microscope. Using the Octane Elite Super (EDAX) and OnPoint™ (Gatan) detectors, the composition by difference method was used to reveal the distribution of single-digit mass percentages of lithium quantitatively across the macro-, micro- and nano-scales.

See [www.gatan.com/lithium](http://www.gatan.com/lithium) for the full experiment brief.



# DiATOME

the incomparable Diamond Knife  
for all fields of research...

DiATOME Diamond Knives are the premier knife for biological and materials applications, compatible with all ultramicrotomes.

For decades, researchers have relied on DiATOME Diamond Knives superior quality, reliability, and durability. And with proper use, they require far less resharpening than any other knife, making them economical as well. Resharpened DiATOME knives undergo the same stringent optical checking and sectioning test as new knives. The same flawless quality is guaranteed.

Applications are numerous and include sectioning of hard or soft industrial samples, embedded biological samples, alternating ultrathin/semithin, and frozen hydrated samples. Please see our website for a complete applications guide.

Get them from  
**THE** source...

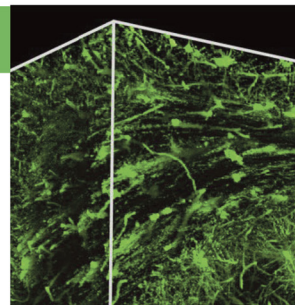
## DiATOME U.S.

P.O. Box 410 • 1560 Industry Rd.  
Hatfield, Pa 19440  
Tel: (215) 412-8390  
Fax: (215) 412-8450  
email: info@diatomeknives.com

### NEUROSCIENCE

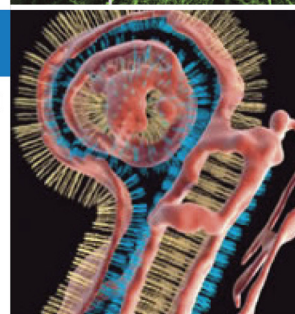
Micro-Optical Sectioning Tomography to Obtain a High-Resolution Atlas of the Mouse Brain Anan Li, Hui Gong, Bin Zhang, Qingdi Wang, Cheng Yan, Jingpeng Wu, Qian Liu, Shaoqun Zeng, Qingming Luo

Britton Chance Center for Biomedical Photonics, Wuhan National Laboratory for Optoelectronics—Huazhong University of Science and Technology, Wuhan 430074, P. R. China.



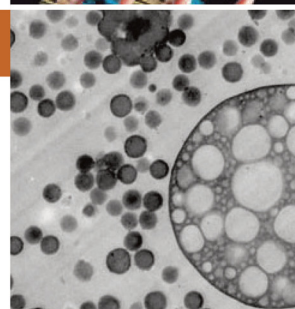
### CRYO

A single slice of a tomogram of an aldehyde fixed and sucrose infiltrated cryosection with a 3D reconstruction. Erik Bos and Peter J. Peters, Netherlands Cancer Institute, Amsterdam. (see: J. Lefman, P. Zhang, T. Hirai, RM. Weis, J. Juliani, D. Bliss, M. Kessel, E. Bos, P.J. Peters, S. Subramaniam: Three-dimensional electron microscopic imaging of membrane invaginations in Echerichia coli overproducing the chemotaxis receptor Tsr. J. Bacteriol. 2004 Aug; 186(15): 5052-61.)



### MATERIALS

ABS, stained with OsO4, sectioned at room temperature with the ultra sonic knife, section thickness 50nm. Note the almost perfect spherical shape of the large rubber particles and the preservation of the inclusions inside. Also the smaller dense rubber particles are well preserved. B.Vastenhou, Dow Benelux N.V. Terneuzen, The Netherlands.



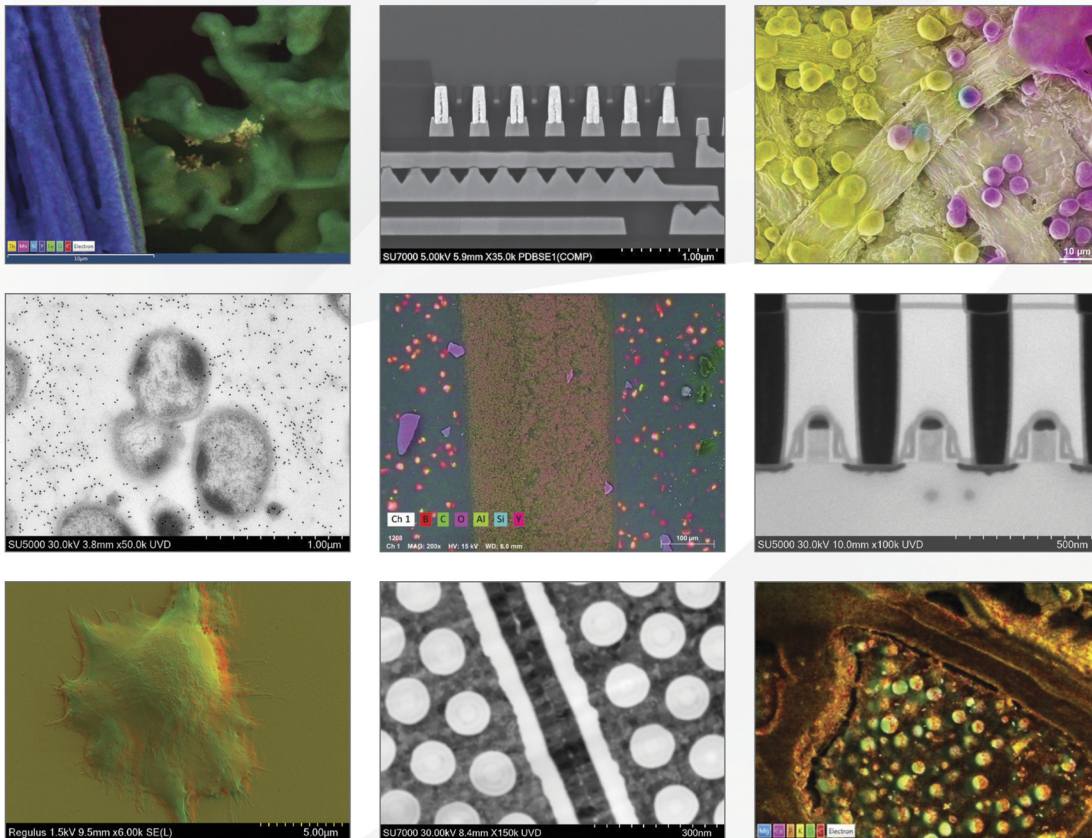
Ultra-Wet 35° • Ultra-Dry 35° • Ultra-Semi 35° • Ultra Maxi 35°  
Ultra Jumbo 35° • Ultra Sonic 35° Ultra ATS 35° Ultra-AFM 35°  
Ultra-Wet 45° • Ultra Jumbo 45° • Cryo 25° • Cryo Immuno 35°  
Cryo-Dry 35° • Cryo-Wet 35° • Cryo-Dry 45° • Cryo-Wet 45°  
Cryo-AFM Histo 45° • Histo Jumbo 45° • Histo-Cryo Dry 45°  
Histo-Cryo Wet 45° • Trimtool 20 • Trimtool 45 • Static Line II





# Cutting-Edge Applications Require Cutting-Edge Instrumentation

Today's rapidly evolving applications require superior imaging, high throughput, and reliable runtime. Hitachi, the award-winning innovator in Field-Emission SEM, offers a broad range of options for semiconductor, materials, and life science applications. Explore the Hitachi EM portfolio and maximize your analyses with platforms designed for users of all experience levels as well as many configurations to fit your needs and budget.



Request a Virtual Demonstration

**Hitachi High-Tech America, Inc.**

[www.hitachi-hightech.com/us](http://www.hitachi-hightech.com/us)

[hta-microscopy@hitachi-hightech.com](mailto:hta-microscopy@hitachi-hightech.com)

Tel. 800-253-3053

*Hitachi Social Innovation is*

**POWERING GOOD**