

## TEM Investigation of Er<sub>2</sub>O<sub>3</sub> Thin Films Grown on Si (100) by Laser MBE

Y.L. Zhu,\* X. Wang,\* M. He,\*\* H.B. Lu,\*\* and X.L. Ma\*

\* Shenyang National Laboratory for Materials Science, Institute of Metal Research, Chinese Academy of Sciences, Shenyang 110016, P.R. China

\*\* Beijing National Laboratory for Condensed Matter Physics, Institute of Physics, Chinese Academy of Sciences, Beijing 100190, P.R. China

Er<sub>2</sub>O<sub>3</sub> is a rare earth metal oxide showing reduced interfacial reactivity with silicon substrate even at temperatures as high as 900° C [1]. It also has a high dielectric constant (10-14) and large band gap. Therefore it is currently being studied as a gate dielectric to replace SiO<sub>2</sub> for complementary metal-oxide-semiconductor devices. In the past few years, various techniques have been applied to the growth of Er<sub>2</sub>O<sub>3</sub> thin films on Si substrates, such as metal organic chemical vapor deposition [2], electron beam gun evaporation [3], and molecular beam epitaxy (MBE) [4] etc. Depending on different deposition methods and deposition parameters, Er<sub>2</sub>O<sub>3</sub> thin films with preferred orientations of either (110) or (111) on Si(100) were obtained. In this paper, laser MBE was used to prepare Er<sub>2</sub>O<sub>3</sub> thin films on Si(100) and the microstructures, especially the interface layer, of as-received thin films were investigated by means of transmission electron microscopy (TEM) and associated techniques.

Er<sub>2</sub>O<sub>3</sub> thin films with a thickness of 30 nm were prepared on Si(100) substrates by Laser MBE. The substrate temperature was kept at 620° C. The oxygen pressure was  $3 \times 10^{-4}$  Pa. The output of a Lambda Physik LEXTRA200 excimer laser (308 nm, 20 ns, 2 Hz) was used as the laser source with an energy density of about 1 J/cm<sup>2</sup>. TEM specimens were prepared for cross sectional observation. A Tecnai F30 transmission electron microscope at 300 kV, equipped with Gatan imaging-filter (GIF), was used to carry out lattice imaging and elemental mapping analysis

Fig. 1(a) shows a low magnification high resolution TEM image of Er<sub>2</sub>O<sub>3</sub>/Si layer prepared by laser MBE. The interface between the film and Si is distinct. Two layers can be distinguished above the crystalline Si substrate: an interface layer with around 2nm thick, and a crystalline Layer of Er<sub>2</sub>O<sub>3</sub>. The interfacial layer can be better seen in an enlarged image of Fig. 1(b). It should be pointed out that the present interface layer thickness is well below the value of 3.5nm reported for electron beam evaporated films with the whole thickness of 6.5nm [3]. Because the interface layer usually plays an important role in electrical properties of oxide thin films, it is worthwhile to further understand the chemical composition of this layer. Energy filtered TEM images were obtained to get composition information for different elements. Fig. 2 shows an elastic-filtered image of Er<sub>2</sub>O<sub>3</sub>/Si layered structure, with the erbium, silicon and oxygen mapping distribution. Si map (Fig. 2b) demonstrates the interface layer contains slight Si. Similarly, the erbium map (Fig. 2c) reveals continuous coverage within erbium oxide layer. The erbium distribution can also be detectable in the interfacial layer, indicating the interface layer also contains Er. In combination with O-map (Fig. 2d), it can be judged that the interface layer is an intermixed Er-containing silicates layer. However, it is worth noting that the content of Si in this layer is relatively low compare with that in Er<sub>2</sub>O<sub>3</sub> films prepared by other methods [2]. In summary, HRTEM observations show that a 2nm thick interface layer exists in Er<sub>2</sub>O<sub>3</sub> thin films grown on Si(100) substrates by laser MBE. The interface layer contains

much Er, slight Si and O by elemental mapping analysis. The financial support from China was much acknowledged [5].

#### References

- [1] M.P. Singh et al., *Appl. Phys. Lett.* 83 (2003) 2889.
- [2] M. Losurdo et al., *Appl. Phys. Lett.* 91 (2007) 091914.
- [3] K.B. Jinesh et al., *Appl. Phys. Lett.* 94 (2009) 252906.
- [4] R. Xu et al., *J. Cryst. Growth*, 277 (2005) 496.
- [5] This research was supported by the National Basic Research Program of China under grant of (2009CB623705), and the National Natural Science Foundation of China (No.50871115).

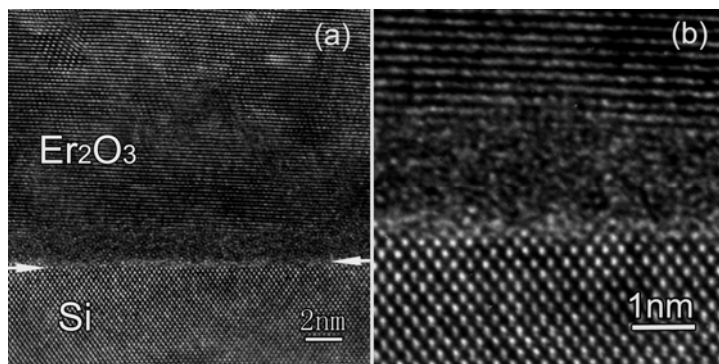


FIG. 1. (a) A typical HRTEM image of  $\text{Er}_2\text{O}_3$  thin films grown on Si (100) substrate by laser MBE and (b) an enlarged part of interfacial area of (a) showing the existence of interfacial oxide layer with the thickness of around 2 nm.

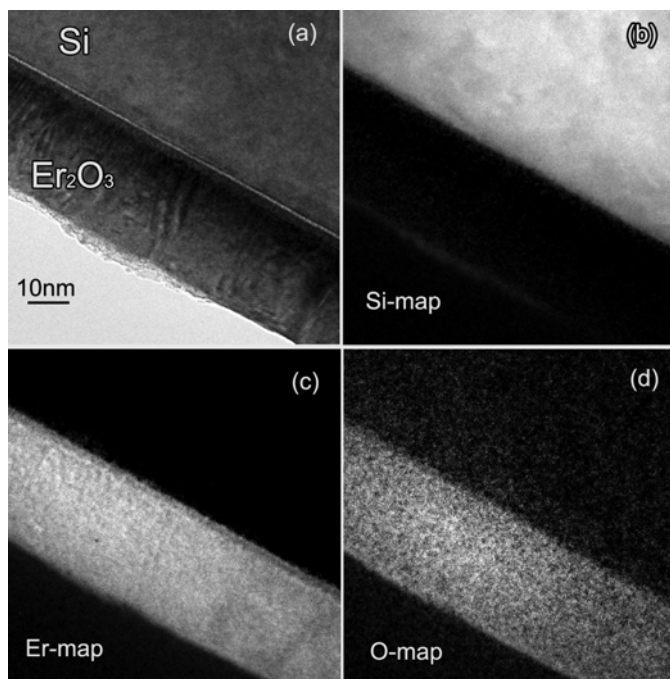


FIG. 2. (a) Zero-loss filtered image of  $\text{Er}_2\text{O}_3/\text{Si}$  layer structure with corresponding elemental mapping images of (b) Si; (c) Er and (d) O, respectively.