



# LOOK AGAIN...

*Just for Fun!*

See if you can find the 8 differences in each set of images.

## Molecular motors, a portrait

The image illustrates our model regarding HMM (heavy meromyosin) adsorption on surfaces. Proteins adsorb in a functional "heads up" configuration on hydrophobic surfaces but both in heads up and down (not so functional) configurations on hydrophilic surfaces.

Nuria Albet Torres, Linnaeus University, Sweden

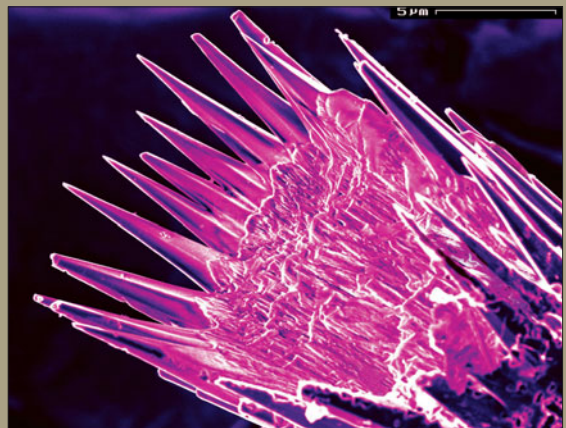
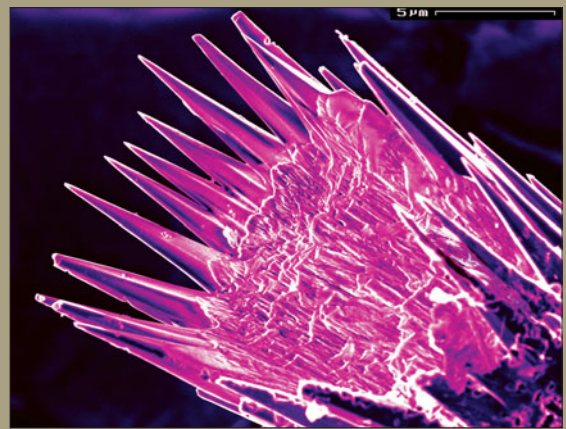


Answers will be in April 2011 issue or on [www.mrs.org/LookAgain\\_Feb11](http://www.mrs.org/LookAgain_Feb11)

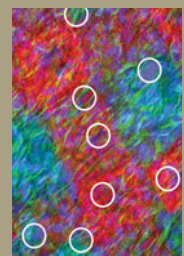
## Micro underwater thorny flower

Scanning electron micrograph of the spicules of the *Herdmania momus* sea sponge. These spicules are made of vaterite, a very rare and metastable polymorph of  $\text{CaCO}_3$ .

Boaz Pokroy, Harvard University



December 2010 answer key [www.mrs.org/LookAgain\\_Dec10](http://www.mrs.org/LookAgain_Dec10)



Images on the top were submitted to the Materials Research Society "Science as Art" competition ([www.mrs.org/scienceasart](http://www.mrs.org/scienceasart)). Images on the bottom were modified in Adobe Photoshop for this "Look Again" activity.