

VOL. 107. No. 451.

NOVEMBER, 1961

THE JOURNAL OF MENTAL SCIENCE

(THE BRITISH JOURNAL OF PSYCHIATRY)



BY AUTHORITY OF
THE ROYAL MEDICO-PSYCHOLOGICAL ASSOCIATION

London

H. K. LEWIS & CO. LTD

PUBLISHED SIX TIMES A YEAR

SINGLE COPIES £1 NET

ANNUAL SUBSCRIPTION £6 POST FREE

JOURNAL OF MENTAL SCIENCE

EDITOR-IN-CHIEF

Eliot Slater

CO-EDITORS

G. W. T. H. Fleming

Alexander Walk

BOARD OF ASSESSORS

E. W. Anderson	J. Hoenig	D. A. Pond
A. A. Baker	W. W. Kay	Felix Post
R. F. Barbour	L. G. Kiloh	K. Rawnsley
John Bowlby	B. H. Kirman	*W. Linford Rees
G. M. Carstairs	Denis Leigh	*B. W. Richards
*L. C. Cook	*T. F. Main	Derek Richter
A. J. Coppen	Paul Mallinson	J. A. Fraser Roberts
Valerie Cowie	V. Meyer	J. T. Robinson
*Desmond Curran	*W. M. Millar	T. Ferguson Rodger
Peter Daniel	Louis Minski	*Martin Roth
D. Russell Davies	*A. B. Monro	Peter Sainsbury
H. V. Dicks	W. L. Neustatter	William Sargant
M. A. Falconer	Ian Oswald	P. D. Scott
*Richard Fox	G. Pampiglione	Patrick Slater
R. K. Freudenberg	C. M. B. Pare	E. Stengel
Gerald Garmany	*M. Partridge	R. Ström-Olsen
T. C. N. Gibbens	A. Spencer Paterson	J. M. Tanner
J. G. Gibson	Malcolm Piercy	F. Kräupl Taylor
Max Hamilton	F. E. Pilkington	R. F. Tredgold
G. R. Hargreaves	John Pippard	*W. Warren
*Denis Hill	John Pollitt	J. K. Wing

*Also members of Journal Committee



Refractory patients respond to Stelazine*

'Stelazine' is of particular value in the treatment of chronic schizophrenics who have proved refractory to other measures. It has been found successful in restoring to reality patients who have remained untouched by other neuroleptic drugs, ECT, ICT, and psychotherapy. Typically, improvement in such cases is seen within the first month and continues over the following months. Apathetic, withdrawn patients make contact again with their environment and become amenable to psychotherapy; hostile, aggressive patients are rendered tranquil but not sedated. Often it is eventually possible to discharge many such patients from the hospital, after which 'Stelazine' may be continued at a lower dosage as maintenance therapy.

'Stelazine' – potent, versatile, and more fully documented than any other recent phenothiazine tranquillizer

Please write for comprehensive literature

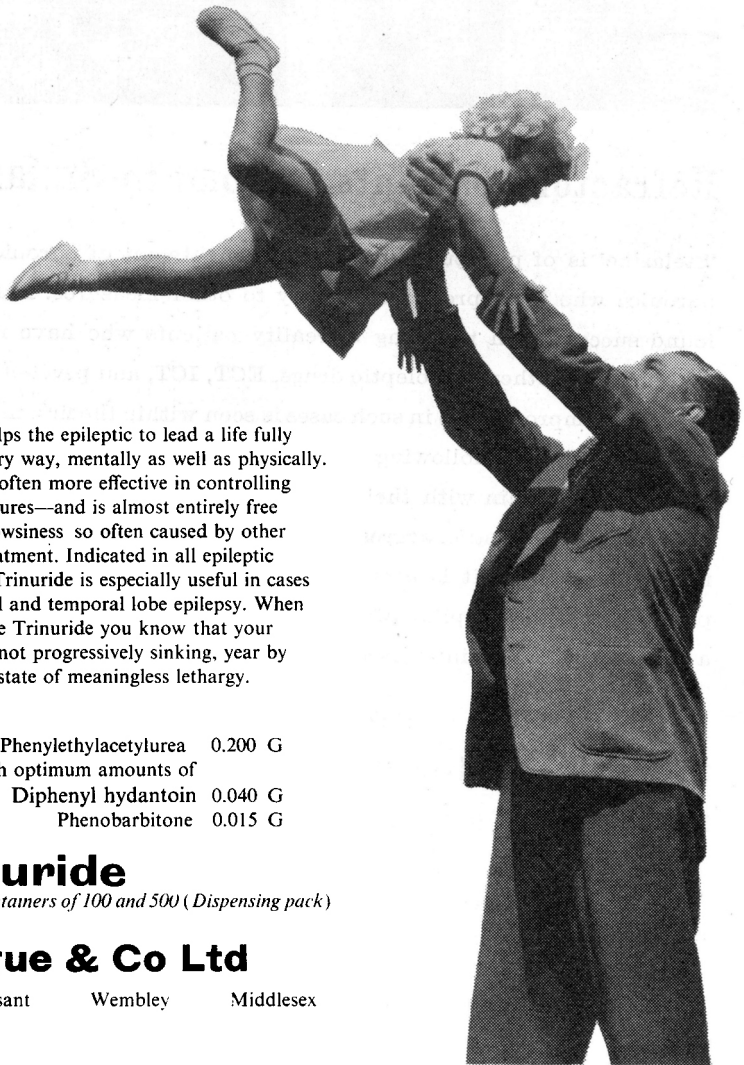
Smith Kline & French Laboratories Ltd, Welwyn Garden City, Herts

* 'Stelazine' (brand of trifluoperazine) is a trade mark
Brit. Pat. Nos. 813861, 857547

SZ: PA 121 (COL)

for your epileptic patients

life can be normal with Trinuride



Trinuride helps the epileptic to lead a life fully active in every way, mentally as well as physically. Trinuride is often more effective in controlling epileptic seizures—and is almost entirely free from the drowsiness so often caused by other forms of treatment. Indicated in all epileptic conditions, Trinuride is especially useful in cases of grand mal and temporal lobe epilepsy. When you prescribe Trinuride you know that your patients are not progressively sinking, year by year, into a state of meaningless lethargy.

Trinuride is Phenylethylacetylurea 0.200 G
together with optimum amounts of
Diphenyl hydantoin 0.040 G
Phenobarbitone 0.015 G

Trinuride

tablets in containers of 100 and 500 (Dispensing pack)

Bengue & Co Ltd

Mount Pleasant Wembley Middlesex

BG5



Fentazin PERPHENAZINE **calms | placates**
controls | relieves

2 to 4 mg three times daily
Fentazin tablets contain 2 mg or 4 mg perphenazine.
Bottles of 50 and 500.



Allen & Hanburys Ltd Bethnal Green London E2

'FENTAZIN' is a Trade mark

AH 213

symptoms of depression respond to **PARNATE**

One of the important clinical advantages of 'Parnate' in the treatment of depression is the distinctive rapidity of its action. Improvement often occurs within 2-3 days, and is usually established within a week; the extent to which an individual patient is likely to respond is soon apparent. Cut-off of activity is also prompt, and prolonged residual effects do not complicate dosage adjustment or the management of side effects.

the indications for 'Parnate' therapy

Reactive and other psychoneurotic depressions
Endogenous depression (including the depressive phase of manic-depressive psychosis and other psychotic depressive states)
Involutional melancholia

PARNATE

- * specific antidepressant action
- * no undue delay in onset
- * facilitates psychotherapy
- * improves and prolongs response to ECT
- * convenient twice-daily dosage

'Parnate' tablets, each containing 10 mg. of tranylcypromine as the sulphate, are available in containers of 50 and 500.

'Parnate' (brand of tranylcypromine), 'Stelazine' (brand of trifluoperazine) and 'Parstelin' are trade marks
Brit. Pat. Nos. 813861, 857547

PT/PL:PA221

concurrent symptoms of depression *and* anxiety respond to **PARSTELIN**

'Parstelin' is often more effective than either an antidepressant or a tranquillizer alone in the wide range of conditions which involve concurrent symptoms of depression and anxiety. A balanced combination of the antidepressant 'Parnate' and the versatile phenothiazine tranquillizer 'Stelazine', 'Parstelin' lifts depression, calms anxiety, and restores the normal resiliency of mood with outstanding rapidity.

the indications for 'Parstelin' therapy

Concurrent symptoms of depression and anxiety
Emotional fatigue
Menopausal syndrome
Emotional states secondary to organic illness
Psychosomatic illness with symptoms of depression and anxiety

PARSTELIN

- * antidepressant and tranquillizing activity in a single tablet
- * takes effect in 1-3 days
- * controls latent and manifest symptoms
- * convenient twice-daily dosage

'Parstelin' tablets, each containing 10 mg. 'Parnate' and 1 mg. 'Stelazine', are available in containers of 50 and 500.

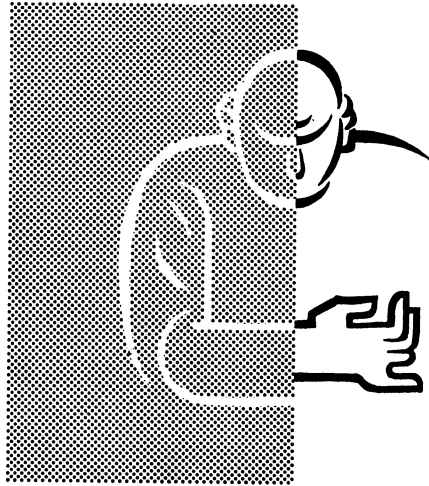


Smith Kline & French Laboratories Ltd
Welwyn Garden City, Herts

DISIPAL

(Regd.)

ORPHENADRINE HYDROCHLORIDE



1. Correction of Drug Induced Extra Pyramidal Symptoms
2. Parkinsonism
3. Senile and Presenile Depressions
4. Vertiginous and Post-Traumatic Dizziness

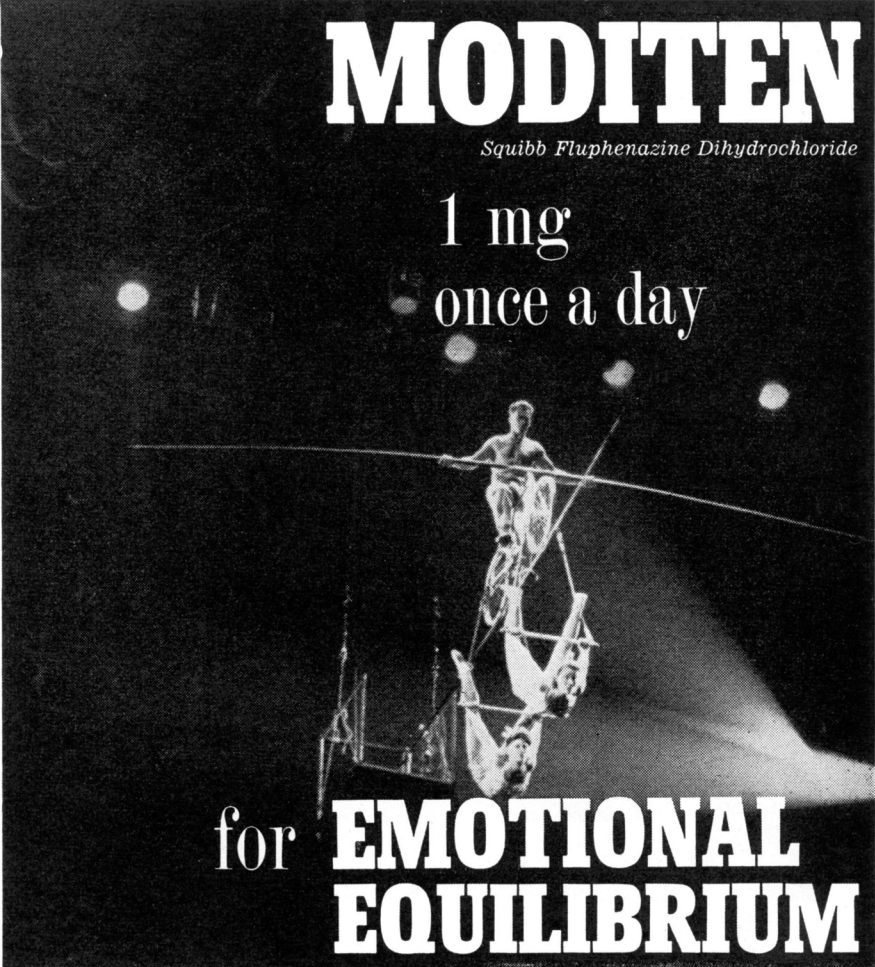
MANUFACTURED AND DISTRIBUTED IN THE U.K. BY

CAMDEN CHEMICAL CO. LTD**LONDON · WC1**

For N.V. KONINKLIJKE PHARMACEUTISCHE FABRIEKEN V H BROCADES · STHEEMAN AND PHARMACIA · AMSTERDAM · HOLLAND

U.K. Patent Nos. 607258 and 743495

for the tense and anxious patient



MODITEN
Squibb Fluphenazine Dihydrochloride

1 mg
once a day

for **EMOTIONAL
EQUILIBRIUM**

SQUIBB



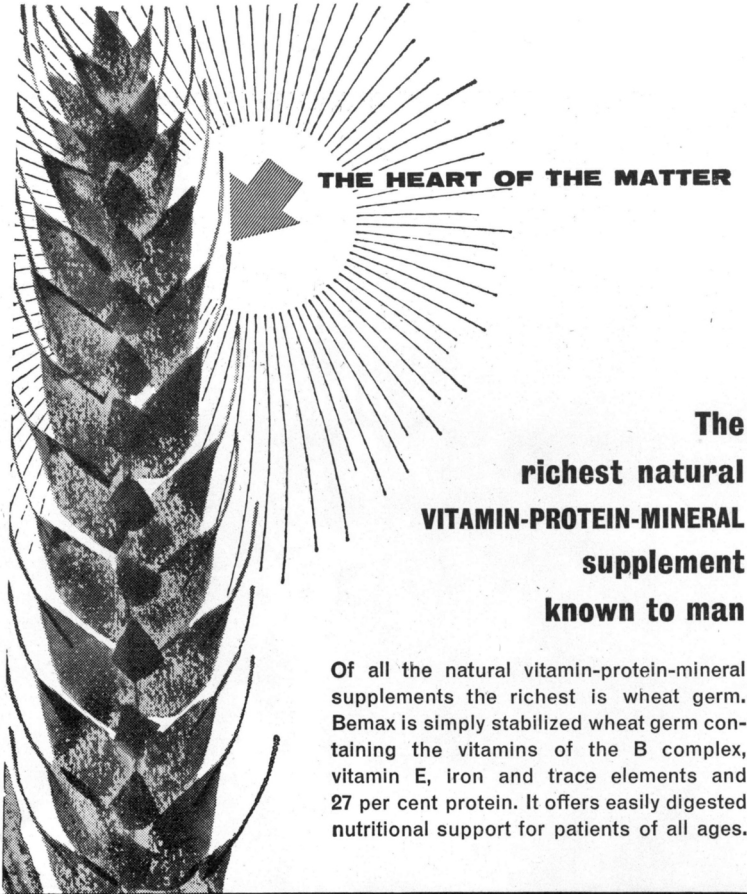
A Century of Experience Builds Faith
'MODITEN' is a trademark

E. R. SQUIBB & SONS LIMITED

Edwards Lane Speke Liverpool 24

DOSAGE: 1 mg. daily. If necessary, the total daily dosage may be increased to 1 mg. b.i.d. or two 1 mg. tablets given as a single dose in patients with relatively severe symptoms who have had a trial at lower dosages. A daily dose in excess of 2 mg. is rarely necessary, and when employed should be used with caution.

SUPPLY: Coated 1 mg. and 0.25 mg. tablets, bottles of 25, 100 and 500. Also as an Elixir containing 0.5 mg. per cc.



THE HEART OF THE MATTER

**The
richest natural
VITAMIN-PROTEIN-MINERAL
supplement
known to man**

Of all the natural vitamin-protein-mineral supplements the richest is wheat germ. Bemax is simply stabilized wheat germ containing the vitamins of the B complex, vitamin E, iron and trace elements and 27 per cent protein. It offers easily digested nutritional support for patients of all ages.

BEMAX STABILIZED WHEAT GERM

PREGNAVITE *during pregnancy*
Supplies Vitamin-mineral dietary needs peculiar to pregnancy. Basic price to N.H.S. 1,000 tablets 32/9.

VITAVEL SYRUP *for the child*
Provides multi-vitamin supplementation in a palatable form. Basic price to N.H.S. 6fl. ozs. 2/6. 40fl. ozs. 16/-.

NATIONAL HEALTH SERVICE

In no case is the cost of a V.L. preparation greater than, and in some it is less than, that of the official equivalent preparation. There is no official equivalent of some V.L. specialities.

VITAMINS LIMITED

(DEPT.ARI) UPPER MALL, LONDON, W.6.

the tranquilliser pure and simple . . .



Mirror-Calm...

Schloss Seon, Bavaria

“Thioridazine is so well tolerated that it appears an excellent phenothiazine for ambulatory patients, in particular for maintenance of patients after they leave hospital.”

J. ment. Sci. (1960) 106, 1417.

“The most striking aspect of Melleril therapy is the poverty of side-effects.”

J. Amer. med. Ass. (1959) 170, 1283.

Melleril

BY SANDOZ

Tablets: Thioridazine hydrochloride
10 mg. 25 mg. 50 mg. 100 mg.

Syrup: 25 mg. thioridazine base in 4 m

... in anxiety and agitation

HIGH BLOOD LEVELS
EFFICIENT ABSORPTION
LONG DURATION

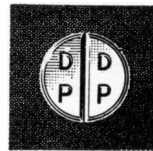
The new
oral, acid-stable
penicillin
'PENSPEK'
POTASSIUM PHENOXYBENZYL PENICILLIN

'PENSPEK' tablets

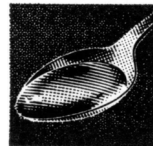
Available in one strength only—125 mg.

Dosage: One tablet six to eight hourly.

Basic N.H.S. Cost of 12 tablets from a dispensing pack of 100—7s. 1d.

**'PENSPEK' syrup**

Presented as granules to which 36 ml. water is added to produce a palatable syrup. Each 5 ml. teaspoonful contains 62.5 mg. *Dosage:* One or two 5 ml. teaspoonfuls six to eight hourly according to age. Basic N.H.S. Cost for 12 dose bottle of 60 ml. (2 fl. oz.)—6s. 8d.

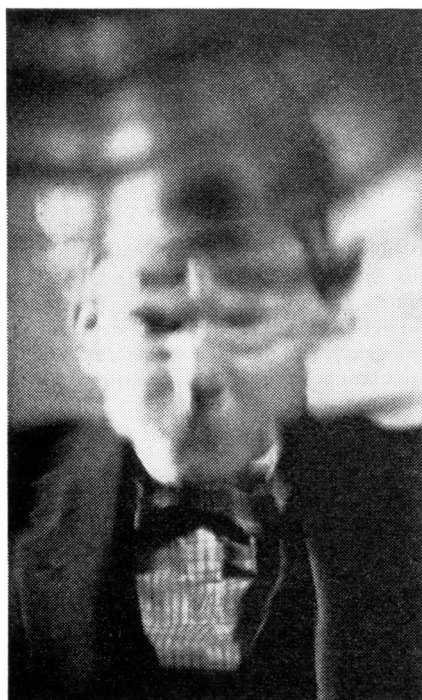


DC/BL

THE DISTILLERS COMPANY (Biochemicals) LIMITED
Broadway House, The Broadway, Wimbledon, LONDON S.W.19
Telephone: LIBerty 6600 Owners of the trade mark 'PENSPEK'

PPH 2991

Calming the troubled mind of the epileptic patient—with 'Mysoline'



Since its introduction in 1952, 'Mysoline' has gained universal acceptance as an outstanding contribution to the control of epilepsy. Available in tablets of 0.25 G. and as a palatable oral suspension. Basic N.H.S. costs: 4/4d. for 30 tablets dispensed from packs of 1,000, and 5/8d. for 100 ml. of suspension.

Mysoline

(Primidone B.P.)

TRADE MARK

Greatly valued in the treatment of epilepsy



IMPERIAL CHEMICAL INDUSTRIES LIMITED PHARMACEUTICALS DIVISION WILMSLOW CHESHIRE

Ph.97

*Oxford Neurological
Monographs*

The aim of this new series is to present considered accounts of topics in the neurological field: these will range from anatomy through experimental physiology to clinical studies.

Traumatic Aphasia

A Study of Aphasia in War Wounds of the Brain

W. Ritchie Russell and M. L. E. Espir

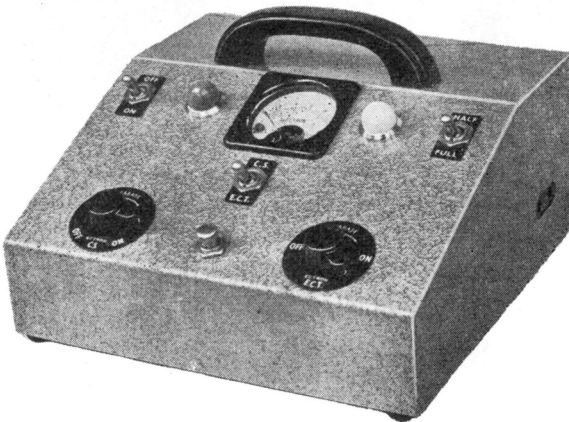
In presenting this unique material it has been possible to investigate many anatomical features of aphasia caused by missile wound of the brain. The cases were studied in detail from the Military Hospital for Head Injuries, Oxford, during and after the Second World War. The problems of cerebral dominance in right and left-handers are fully explored, while the relationships between speech and mental disorders, such as amnesia, lead to a discussion of many facets of cerebral activity.

Illustrated 38s net

OXFORD UNIVERSITY PRESS

'ECTONUSTIM'

**E.C.T. APPARATUS and
CEREBRAL STIMULATOR**
(A.C. or D.C. Mains)



For a new improved E.C.T. technique which eliminates the need for muscle relaxants and anaesthetics.

Also:

- 'ECTONUS'
—E.C.T. apparatus
- 'ECTRON'
—E.C.T. apparatus
- 'ECTRON'
—Rubber Mouth Gag
- 'ECTRONOLYTE'
—Electrolyte Powder

Write for full details to: **ECTRON LTD**
39 NORTON ROAD, LETCHWORTH, HERTS, ENGLAND
Telephone: LETCHWORTH 2124

WYKE HOUSE, ISLEWORTH

Tel. ISLeworth 7000

A Private Home for the individual
treatment and care of Nervous and
Mental Illness and Alcoholism

Further particulars from the Resident Physician

H. PULLAR-STRECKER,
M.D.



La Métairie NYON (Switzerland)

Lake of Geneva

Private Nursing Home, Founded in 1857. Several villas in a large park

All types of modern Treatment for Mental & Nervous Diseases

Rest Cures - Psychotherapy
Biological Treatments - Chimiotherapy

For further information: Apply to Dr. W. SEMADENI, Chief Doctor
Telephone 9.65.91

NORTHUMBERLAND HOUSE

A Psychiatric Nursing Home for informal and certified patients. Situated in pleasant grounds at 237-9 Ballards Lane, N.3. Tel. FINchley 5283. Resident Medical Director, Dr. Robert M. Riggall, Memb. Brit. Psycho-Analytical Socy. with Assistant Psychiatrist. Deep Insulin Coma Unit, psychotherapy, etc. Central heating and running water in all rooms.

SPRINGFIELD HOUSE, Near BEDFORD

Telephone: Bedford 3417

A Private Mental Nursing Home two miles from Bedford Station, for 48 patients of both sexes. Extensive grounds and vegetable garden. Elderly patients requiring special care and attention are admitted.

Fees from 12 Guineas per week

For Forms of Admission, etc., apply to the Resident Physician, CEDRIC W. BOWER

CHISWICK HOUSE, MOSS LANE, PINNER, MIDDLESEX

Telephone Pinner 0234

Private Nursing Home for Nervous and Psychological Troubles, including Alcoholism and a certain number of long-term elderly cases.

All modern treatments. Forty patients of both sexes. Country house in six acres of grounds. Twelve miles north-west of London. Easily accessible from Baker Street to Pinner—22 minutes. Ten minutes walk from Pinner Station. Resident and visiting physicians.

Medical Director, Douglas Macaulay, M.D., D.P.M.

HITCHAM PLACE, BURNHAM, BUCKS.

(late Fenstanton, Christchurch Road, S.W.2)

A Private Home for the Care and Treatment of a limited number of Ladies with Mental and Nervous Disorders. Large Country Mansion with twenty acres of grounds in Green Belt. Home-like surroundings.

Apply: Dr. Madeline R. Lockwood, Resident Physician. *Telephone: Burnham 624*

Enquiries regarding advertising in

JOURNAL OF MENTAL SCIENCE

should be addressed to:—

Advertisement Manager

ALDRIDGE PRESS LTD

27 Chancery Lane London WC2

Telephone: HOLborn 8655/6

Telegrams: Presreps, Holb. London

BARNWOOD HOUSE

GLOUCESTER

A PRIVATE HOSPITAL (outside the National Health Service), for the CARE and TREATMENT of LADIES and GENTLEMEN suffering from NERVOUS and MENTAL DISORDERS. Within two miles of the Western and London Midland Regional Railway Stations at Gloucester, the Hospital is easily accessible by rail from London and all parts of the United Kingdom. It is beautifully situated at the foot of the Cotswold Hills, and stands in its own grounds of over 300 acres. Patients of both sexes are received for treatment. Special accommodation is also provided in a villa residence, which stands in its own grounds and is entirely separate from the main Hospital. All the most modern methods of treatment, including electric shock and prefrontal leucotomy, are used.

HUME TOWERS

27 BRANKSOME WOOD ROAD, BOURNEMOUTH

TELEPHONE: WESTBOURNE 64384

has been opened as an ordinary nursing home for all kinds of nervous breakdown, with special accommodation for geriatric cases in a separate villa. Applications for admissions should be made to the Resident Medical Officer, Hume Towers.

For Terms, etc., apply to

G. W. T. H. FLEMING, M.R.C.S., L.R.C.P., D.P.M.

Physician Superintendent

TELEPHONE: No. 66207 GLOUCESTER

as a potent antipsychotic agent

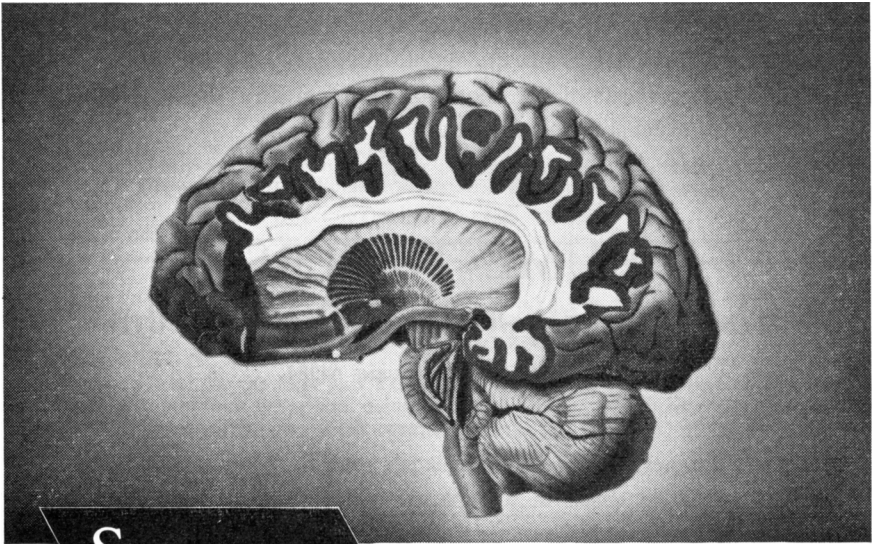
Serenace

brand of

haloperidol

SETS A NEW STANDARD

SERENACE is the first major advance in psychiatric chemotherapy since the introduction of reserpine and the phenothiazines and is the leader of a new class of drugs known as the butyrophenones. Already widely accepted in mental hospitals throughout the United Kingdom, it has been used for more than three years in Continental medicine where it is estimated that experience with SERENACE totals approximately 10 million patient/days of treatment.



Serenace

controls the major manifestations of psychotic illness

including **schizophrenic symptoms**
delusions, hallucinations and paranoia
mania and agitation

Full information is available
 in a Physicians' Reference
 Manual available on request.

(Serenace is a Registered Trade Mark)

SEARLE

THE JOURNAL OF MENTAL SCIENCE

Communications on general editorial matters, including MSS. for publication, printed matter, and books for review should be sent to **The Editor-in-Chief, c/o R.M.P.A., 11 Chandos Street, Cavendish Square, London, W.1.**

Communications and enquiries regarding sales should be addressed to the Publishers, **Messrs. H. K. LEWIS & Co. Ltd., 136 Gower Street, W.C.1;** and those regarding Advertisements to **ALDRIDGE PRESS LTD., 27 Chancery Lane, London, W.C.2.**

Orders and communications to do with Reprints of articles should be sent direct to the printers, **Headley Brothers Ltd., The Invicta Press, Ashford, Kent.**

Details of membership of the Royal Medico-Psychological Association are obtainable from the **Secretary, R.M.P.A., 11 Chandos Street, Cavendish Square, London, W.1.**

THE ROYAL MEDICO-PSYCHOLOGICAL ASSOCIATION PUBLICATIONS

From MESSRS. H. K. LEWIS & Co. LTD.,
136 Gower Street, W.C.1

"The Journal of Mental Science." Published six times a year. Price 20/-. Postage extra.

From MESSRS. J. & A. CHURCHILL, LTD.,
104 Gloucester Place, W.1

"Recent Progress in Psychiatry." Vol. 2, 1950. Pp. 711. Price 50/-.
Vol. 3, 1959. Pp. 404. Price 50/-.

From MESSRS. BAILLIÈRE, TINDALL & COX,
8 Henrietta Street, W.C.2

"Handbook for Mental Nurses." 8th edn. 1954. Price 21/-.

From THE SECRETARY, 11 Chandos Street, W.1

The Charter and By-Laws of the Association. Price 2/-. Postage 1½d.

"Recent Progress in Psychiatry." Vol. 2, 1950 }
Vol. 3, 1959 } (at special price to members of R.M.P.A.)



can't cope all day—
can't sleep at night

'Amylozine Spansule' sustained-release capsules are indicated in chronic psychoneuroses and acutely apprehensive states, marked by agitation, insomnia, fatigue,

phobias, vacillation, moodiness and fear. Each 'Amylozine Spansule' capsule contains trifluoperazine 2 mg. and amylo-barbitone 64.8 mg. (gr. 1).

AMYLOZINE

provides tranquillity with **controlled** sedation



Smith Kline & French Laboratories Ltd, Welwyn Garden City, Herts

'Amylozine' and 'Spansule' are trade marks

Brit Pat. Nos. 742007, 813861, 857547 SAM : PA221

INSTRUCTIONS TO AUTHORS

Strict observation of the following requirements will save intending authors considerable time and worry, and will facilitate the publication of papers submitted.

(1) Authors should consult a current issue to see how a paper should be presented. They should consult *General Notes on the Preparation of Scientific Papers*, published for the Royal Society by the Cambridge University Press, 200 Euston Road, London, N.W.1 (price 2s. 9d. post free).

(2) The title should be brief and contain no sub-heading. This should be followed by the author's name, his qualifications and his present appointment.

(3) Omit a summary of the literature when this has been adequately summarized elsewhere.

(4) For reasons of economy, case-histories of patients can be published only when they are of exceptional scientific interest.

(5) Diagrams and graphs must be drawn in black ink with properly printed lettering. If they have to be redrawn by the printer, the cost, which may amount to several pounds, will be charged to the author.

(6) Tables and graphs should be kept as few as possible. If they number more than a few, the author must be prepared to pay part of their cost.

(7) Any deviation or difference that might be due to random sampling must, if it is to be discussed in its general, scientific significance, be first shown, by calculation of the appropriate probability, to be significant statistically.

(8) All references should be given at the end of the paper, in alphabetical order, and be numbered, i.e.

(1) SMITH, A. B., *J. Ment. Sci.*, 1950, 95, 493.

(2) THOMAS, B. C., *Arch. Neur. Psychiat.*, 1955, 74, 489.

In the body of the paper they should appear as: Smith (1), Thomas (2).

(9) When the proof arrives from the printer it is for the correction of printer's mistakes only. Larger alterations can be made only with the Editor's permission and if the author is willing to defray the cost.

(10) Each author and co-author will receive 10 reprints of his paper free of charge. If further reprints are required the order should be sent direct to Messrs. Headley Brothers, Ltd., The Invicta Press, Ashford, Kent, at the time the galley proof is sent to the author. Orders for reprints must not be sent to the Editor-in-Chief.

(11) A paper sent to the Editor-in-Chief is, as a rule, sent to one of a panel of assessors for his opinion.



Roche psychotropic drugs

'Librium'

successor to the tranquillizers

'Taractan'

first broad spectrum psychotropic

'Marplan'

potent monoamine oxidase inhibitor

'Nitoman'

powerful neuroleptic

ROCHE PRODUCTS LTD

J106