

Economical, Universal Application
Rapid Freezing Workstation

EMS-002 Cryo Workstation

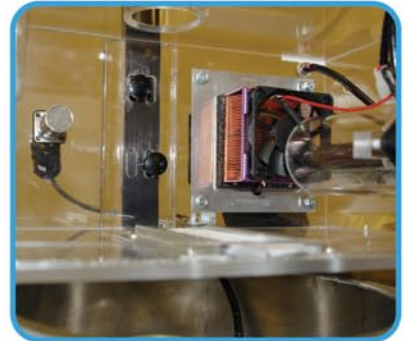
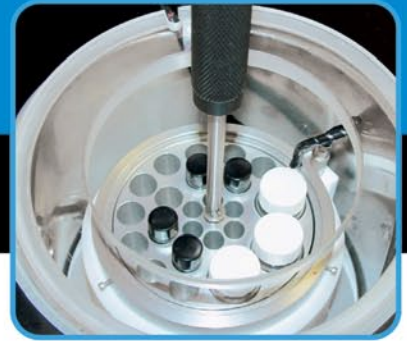
Allows for a reliable,
virtually routine freezing
of biological samples.

Applications:

- Cryo-fixation of virus partials
- Cryo-fixation of isolated or assembled macromolecules
- Cryo-fixation of emulsions paints and polymers
- Cryo-fixation of suspension and tissues for Cryo-techniques such as freeze fracture/etch, freeze drying, freeze substitution.

Advantages:

- Economical, universal application rapid freezing unit.
- Plunge freezing with temperature controlled cryogen.
- Frozen samples handled under cold dry nitrogen atmosphere.
- Rapid set up and easy use.
- Reproducible results.
- High and low set points for cryogen control.



For more information, please visit our
website at www.emsdiasum.com

**Electron
Microscopy
Sciences**

P.O. Box 550 • 1560 Industry Rd. • Hatfield, Pa 19440
Tel: (215) 412-8400 • Fax: (215) 412-8450
email: sgkock@aol.com • website: www.emsdiasum.com

Optional Accessories

Freeze Substitution Module
Cryo-TEM Transfer Interface
Climate Controlled Environmental Chamber
Metal Mirror Impact Freezing Fixture
Diamond Anvil
Automatic Liquid Nitrogen Filling
Propane Transfer System
Freeze Forceps
Muscle Biopsy Clamps

You asked. We listened.

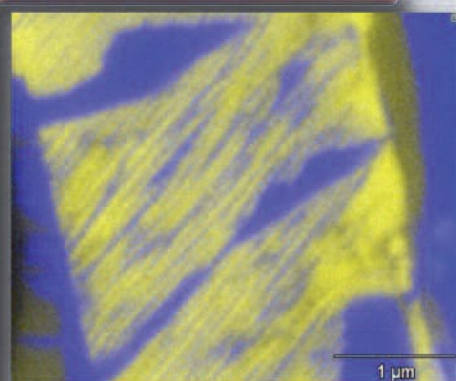
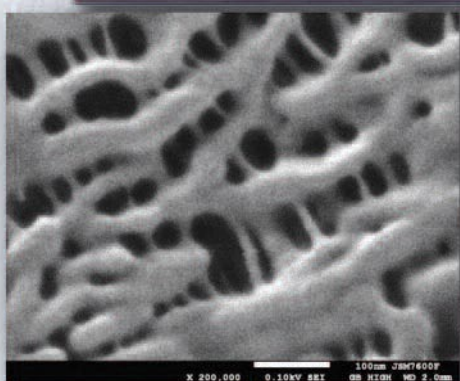
https://doi.org/10.1017/S15295090000455 Published online by Cambridge University Press

Ultrahigh Resolution

Analytical Performance

Ultralow kV

Uncoated stretched polypropylene

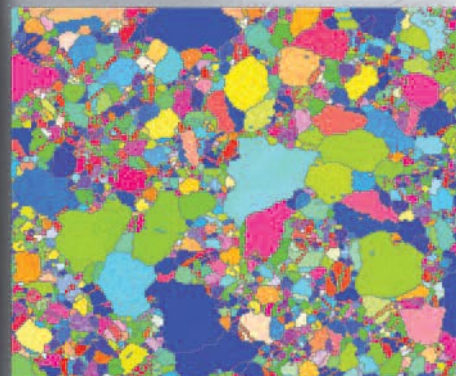


EDS/WDS

EDS map of TiO_2 in FeO_x with $< 100nm$ spatial resolution 30,000x

LABE

1-3 nm twinning in mineral BSE image

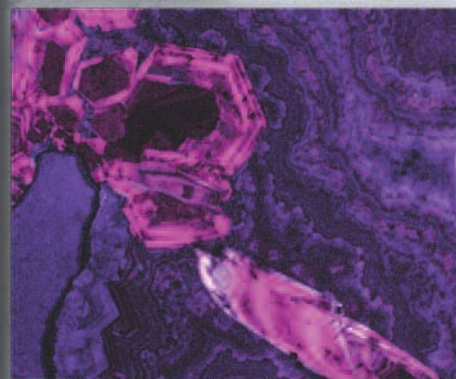
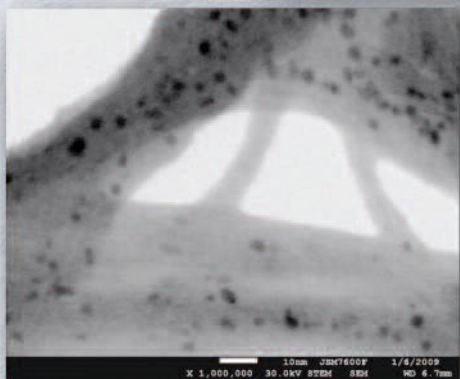


EBSD

Orientation map of Ni alloy

STEM

CNT with 1-3 nm Pt nanoparticles



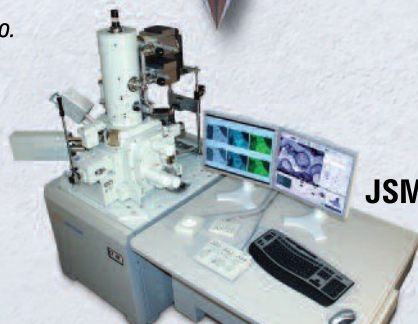
CL

Quartz and zinc oxide

Seeing is believing!

Contact salesinfo@jeol.com to arrange a demo. For more information or to view a brochure visit www.jeolusa.com/7600F.

All magnifications as printed at 4 x 5 in.



JSM-7600F

Thermal FEG SEM

Another
Extreme
Imaging
Solution

JEOL

Stability • Performance • Productivity
www.jeolusa.com • salesinfo@jeol.com
978-535-5900