

This is a “preproof” accepted article for *Journal of Glaciology*.  
This version may be subject to change during the production process.  
10.1017/S0031182025000034

## Passage of *Angiostrongylus cantonensis* through the trophic web: an experimental study on reptiles

Lucia Anettová,<sup>1,2</sup> Anna Šípková,<sup>2</sup> Vivienne Velič,<sup>3</sup> Jana Kačmaříková,<sup>3</sup> Kristýna Javorská,<sup>1</sup> Ladislav Novotný,<sup>1,4</sup> Petr Cibulka,<sup>1</sup> Martin Květoň,<sup>5,6</sup> and David Modrý<sup>1,2,7</sup>

<sup>1</sup>Department of Veterinary Sciences, Czech University of Life Sciences, Prague, Czech Republic;

<sup>2</sup>Department of Botany and Zoology, Masaryk University, Brno, Czech Republic;

<sup>3</sup>Department of Pathology and Parasitology, University of Veterinary Sciences Brno, Czech Republic;

<sup>4</sup>Department of Comparative Pathobiology, College of Veterinary Medicine, Purdue University, IN, USA;

<sup>5</sup>Third Faculty of Medicine, Charles University, Prague, Czech Republic

<sup>6</sup>Clinical and Transplant Pathology Centre, Institute for Clinical and Experimental Medicine, Prague, Czech Republic

<sup>7</sup>Institute of Parasitology, Biology Center of Czech Academy of Sciences, Ceske Budejovice, Czech Republic

**Corresponding author:** Lucia Anettová, Email: lucia.anettova@gmail.com

This is an Open Access article, distributed under the terms of the Creative Commons Attribution licence (<http://creativecommons.org/licenses/by/4.0>), which permits unrestricted re- use, distribution and reproduction, provided the original article is properly cited.

## Abstract

The rat lungworm *Angiostrongylus cantonensis* is a zoonotic metastrongyloid nematode, currently considered an emerging pathogen approaching Europe. In tropics and subtropics, it is an important food-borne neurotropic parasite of medical and veterinary importance. Sources of infection for mammals and birds include gastropod intermediate hosts and poikilothermic vertebrates (paratenic hosts). To evaluate the relevance of reptiles in the rat lungworm circulation, we performed an experimental series focused on long term survival of third stage larvae (L3) of *A. cantonensis* in reptiles and potential of saurians to serve as a source of infection for further hosts. Twenty leopard geckos (*Eublepharis macularius*) were infected with varying doses of L3 (100, 1000, 10,000 larvae per animal). Live L3 were collected from all infected geckos (mostly in musculature and liver) euthanized one to six months after the infection and were proven to be infective for Wistar rats (definitive hosts). Three sacrificed geckos were subsequently fed to three corn snakes (*Pantheropsis guttatus*) to test hypothesis of L3 infectivity for predators positioned higher in the food chain. Snakes were euthanized one month post-infection and live L3 were detected predominantly in the intestinal wall. The animals remained clinically healthy throughout the study. No reptiles showed significant changes in haematological and biochemical blood parameters, though elevated CK and GLDH were observed in most geckos in the group receiving higher infectious dose. This study highlights the significant potential of reptiles to play a crucial role in the circulation of metastrongyloid nematodes in food web and in their transmission to humans.

**Keywords:** *Angiostrongylus cantonensis*; rat lungworm; reptiles; paratenic host; intermediates

## Introduction

Heteroxenous life cycle involving gastropods as intermediate hosts is a predominant way of transmission in metastrongylid nematodes (Strongylida: Metastrongyloidea) affecting mammalian hosts (Anderson, 2000). However, paratenic hosts play a crucial role in the metastrongylids' circulation, filling a trophic gap in their life cycle (Figure 1), given many carnivorous and rodent definitive hosts do not often consume gastropods deliberately (Odening, 1976; Bush, 2001). Almost every class of poikilothermic vertebrates has been mentioned as a potential reservoir of infective larvae of *Angiostrongylus cantonensis*, commonly known as the rat lungworm. This zoonotic nematode, classified within the family Angiostrongylidae, draws significant public attention due to its neuropathogenic impact on humans and other mammalian and avian hosts. In poikilotherms, which serve as paratenic hosts of the parasite, the infective third-stage larvae (L3) do not progress beyond their larval stage. Instead, they migrate to the viscera and skeletal muscles, where they accumulate and serve as a potential source of infection of vertebrates at higher trophic level (Turck *et al.*, 2022). Conversely, in birds and mammals, these larvae become lodged within the central nervous system, leading to neurological disorders (Delgado-Serra *et al.*, 2022; Kim *et al.*, 2002; Monks *et al.*, 2005; Spratt, 2015). The rat lungworm is known to have originated in Southeast Asia. Since then, it has spread into tropics and subtropics throughout the world, being considered as an emerging pathogen of global importance. It is known to adapt to new host spectra regarding its intermediate (and paratenic) hosts in non-indigenous areas of its distribution. This phenomenon has been repeatedly observed in isolated island ecosystems characterized by their unique endemic fauna (Jaume-Ramis *et al.*, 2023; Martín-Carrillo *et al.*, 2021).

Reptiles are known to serve as paratenic hosts of *A. cantonensis* and can be a source of infection for humans and animal when eaten raw or undercooked (Pandian *et al.*, 2023; Turck *et al.*, 2022). In Asia, yellow tree monitor lizards (*Varanus bengalensis*) are the most common reptile source of infective larvae for humans (Hidelaratchi *et al.*, 2010; Kanpittaya *et al.*, 2000; Yang *et al.*, 2021). These lizards are considered a delicacy (typically in India and Sri Lanka) (Hidelaratchi *et al.*, 2010) and, their meat or liver are used in traditional medicine, as believed to strengthen human power (Wangpan & Tang jang, 2012). Reptiles, in particular geckos, were also reported as a suspected source of infection of captive birds of prey infected with the rat lungworm (Burns *et al.*, 2014). Monitor lizards appear to be highly susceptible to infection with *A. cantonensis* (Radomyos *et al.*, 1992), and therefore may play an important role in the parasite's circulation. Other reptile species have also been found to naturally harbor *A. cantonensis* larvae. Recently, endemic lizards (*Gallotia galloti*) were confirmed as paratenic hosts of the nematode in the Canary Islands, a location near Europe (Anettová *et al.*, 2022).

Experimental studies on reptiles as hosts of *A. cantonensis* are limited. Ash (1968) infected sea snakes (*Laticauda colubrina*), recovering infective larvae after 1 to 4 weeks mostly from somatic musculature. Radomyos *et al.* (1992) demonstrated *Varanus bengalensis* as a paratenic host, capable of harbouring infective larvae for up to a month. Subsequently, a survey in Thailand by Radomyos *et al.* (1994) found 21 out of 23 monitor lizards infected, primarily in the liver.

While the observation of wild animals provides essential data on the parasite's distribution, insufficient information about the animals' history complicates the evaluation of detailed infection dynamics and impact of infection on hosts' fitness. Experiments in controlled environments can overcome these obstacles. Since it is already known that reptiles,

especially saurians, can harbour infectious larvae of *A. cantonensis*, our study aimed to investigate more complex interactions. We conducted a series of experimental infections on model reptilian hosts (leopard geckos, *Eublepharis macularius*) and corn snakes (*Pantherophis guttatus*) to demonstrate how exposure to various doses of infective larvae influences the final number of larvae in the host's tissues and to determine if the larvae can survive in reptiles for extended period of time. We also hypothesized that the L3 survive and accumulate in reptiles at higher trophic level (represented by snakes in our experiment) after predation on infected lizards, explaining high infection intensities in Asian monitor lizards. Additionally, cannibalism among conspecific *Gallotia* spp. can potentially lead to larval transmission from one lizard to another as well. This phenomenon of metastrongylid larvae transmission between two hosts on the same level has been described for *A. cantonensis* (Modrý *et al.*, 2021) as well as other metastrongylids (Colella *et al.*, 2015). Our final objective was to assess the impact of infection on the fitness of experimental lizards.

### Materials and methods

The experimental strain of *A. cantonensis* was obtained in 2021 in Tenerife, Spain and is maintained in laboratory conditions circulating between Wistar rats and experimental gastropods (*Lissachatina fulica* and *Veronicella cubensis*). The identity of the isolate was verified by examining the morphology of adult nematodes recovered from infected rats, and it was classified as part of the *A. cantonensis* clade 2 through *cox1* sequencing (as described by Červená *et al.* (2019)). The live L3 were obtained by artificial digestion, using 0.3 g pepsin (3.4.23.1 (BRENDA, IUBMB)) and 100 mL 0.7% HCl on a magnetic stirrer set to 0.6 xg and 37°C (as in Modrý *et al.* (2021)) and larvae were collected either manually (G1 and G2) or using an aliquot of a volume containing specific number of L3 (G3). A scheme depicting the experimental groups are shown in detail in Supplementary Figure 1.

Leopard geckos were obtained from a private breeder as sub-adults, approximately 12 months old. They were allowed to acclimatize for 2-4 weeks and were kept in terraria in same- sex pairs. They were fed with crickets (commercially available) three times per week and mineral supplements were provided. Adult corn snakes of approximately two years of age were

obtained from a private breeder as well. Snakes were let to acclimatize for four weeks and were fed every third week with commercially available sacrificed mice. During the first phase of the experiments, 10 leopard geckos were used to assess the dose needed for retrieving of L3 for infection of further hosts (definitive and paratenic). Five leopard geckos (females, group G1) were inoculated with a suspension of 100 L3 each, using orogastric tube (“low dose” group). Five male leopard geckos (G2) were inoculated with a higher dose of 1000 L3 each. The remaining three male geckos (G0) served as a control group to assess possible changes in clinical status and in haematological and biochemical parameters.

Animals in all three groups were euthanized 4 weeks after the infection, using dexmedetomidine (0.3 mg/kg) and ketamine (3 mg/kg) followed by intracardial application of pentobarbital (0.2 ml). Before the application of pentobarbital, blood was collected from heart for haematological and biochemical analyses. White blood cells, heterophils, lymphocytes, monocytes, eosinophiles and basophiles were counted, and following enzymes were quantified: ALT, AST, ALP, GLDH, CK and TP (in collaboration with Laboklin Czech). Due to small body size of the animals, it was not possible to take sufficient amount of blood for the analyses intravitally (i.e., prior to the infection). Clinical status of geckos and snakes was checked daily, and their food intake was documented. During necropsy, samples for histopathological examination (approx. 0.3 cm<sup>3</sup>) were taken from following tissues: liver, tail muscle, proximal hind leg muscles (i.e., mainly m. ambiens and m. flexor tibialis externus anterior, according to Zaaf *et al.* (1999)), heart, intestine, and brain. After at least 24 hours

fixation in alcohol formalin glacial acetic fixative (AFA), tissue samples from G2 and G3h groups were embedded in paraffin and 6 µm sections were cut transversally in four planes, stained with haematoxylin-eosin for histology in St. Anne's University Hospital, Brno. Additionally, a small piece of each tissue (approx. 30 µg) was taken for a qPCR analysis (quantification for a comparison among tissues). All the remaining tissues were artificially digested and live L3 were collected for bioassay on 2 Wistar rats (40 L3 for each, infected under sedation using dexmedetomidine 0.2 mg/kg and ketamine 3 mg/kg). In the second part of the experiment, 10 geckos (G3, divided into three subgroups, G3s, G3h and G3c) were infected with a high dose of up to 10,000 L3 each. These doses were divided into three for each animal and were applied for three consecutive days (using the same method as described above) to avoid regurgitation caused by an excessive amount of a liquid applied. Group G3s contained three geckos (1 male and 2 females) which were intended to be ingested by snakes. Group G3h with 2 female geckos was used primarily for histopathological examination (as described for the previous groups), and the remainders of the bodies were artificially digested as described in G2. Group G3c (5 geckos, 4 females and 1 male) were infected continually, 3 times (with an interval of one week) with approximately 3,000 L3 each time. This group was intended to assess the long-term infection (6 months). After four weeks post infection, animals from G3s and G3h were sacrificed. In animals from G3s, which were intended for a consumption by snakes, dexmedetomidine (0.3 mg/kg, i.m.) + ketamine (1 mg/kg) was applied, followed by rapid destruction of brain (as pentobarbital could not be used due to further consumption by a snake). Animals from the group G3h were euthanized following the same protocol as in G1 and G2 (dexmedetomidine (0.3 mg/kg) and ketamine (3 mg/kg) followed by intracardial application of pentobarbital, 0.2 ml pro toto). The animals from the group G3c were euthanized 6 months after the end of infection period and processed in the same way as G1 and G2, except for the histopathological examination, which was not

performed in this group. Larvae collected during microscopic examination after artificial digestion of tissues were used for a bioassay on Wistar rats. Two rats were each infected with 40 L3 larvae collected from geckos euthanized one month post-infection. One Wistar rat was infected with 40 L3 larvae collected from geckos euthanized six months post-infection. The rat feces were examined 45 days post-infection to confirm the shedding of L1 larvae of *A. cantonensis*.

### *qPCR analysis*

Samples from the organs (liver, intestine, heart and brain) and muscles from experimental groups G1, G2, G3h and G3c were weighed and up to 50 mg of tissue was cut into small pieces and used for the DNA extraction with Zymo (EXM3000) extraction kit with modification optimized for L3 of *A. cantonensis*, when the pre-lyse phase was extended overnight. Samples were examined for the presence of *A. cantonensis* DNA by a species-specific qPCR assay (Sears *et al.*, 2021). The assay was performed in a 20  $\mu$ L reaction using 6.2  $\mu$ L of PCR water,

10  $\mu$ L of 2 $\times$  MasterMix (IDT Prime time gene expression master), 0.2  $\mu$ L of 10  $\mu$ M probe (PrimeTime Eco Probe 5' 6-FAM/ZEN/3' IBFQ, /56-FAM/ACA TGA AAC/ZEN/ACC TCA AAT GTG CTTCGA/3IABkFQ/), 0.8  $\mu$ L of each 10  $\mu$ M primer (forward: AAA CTG TTG CTT TCG AAG CTA TG and reverse: GCG CAA ATC TGA CGT TCT TG) and 2  $\mu$ L of DNA template. Thermocycling (40 cycles) was made with the following cycling conditions: 95°C for 20 s followed by 40°C for 1 s and 60°C for 20 s. As a positive control, DNA from a single L3 of *A. cantonensis* extracted by the same method as samples and diluted 10x were used. We quantified the larval amount per gram of tissue by using a standard curve. The standard curve was designed based on the extracted DNA of a single *A. cantonensis* L3 diluted 1x, 10x, 100x and 1000x. For all the qPCR runs, 100x dilution was used as a standard



and the standard curve was applied. The actual DNA amount per gram of tissue was recounted for the weight of the tissue used for the DNA extraction and the data on the DNA amount were used for a comparison of the infection intensity of the muscles and viscera.

### *Statistical analysis*

To assess the normality of the data, Shapiro-Wilk and Levene tests were performed to decide whether to use Kruskal-Wallis or ANOVA. Kruskal-Wallis test (R) was used to compare the infection intensities represented by calculated concentrations of the DNA among different organs (liver, muscle, gastrointestinal tract, i.e., GIT, heart and brain) in groups G1, G2, G3c and G3h. Dunn's test was used for post hoc pairwise comparisons generated by Kruskal-Wallis test. All the blood parameters, haematological as well as biochemical in groups G0 (negative control), G1 (low dose, 100 L3) and G2 (intermediate dose, 1,000 L3) were analyzed individually and subsequently compared by ANOVA (R). In snakes, we compared the same blood parameters as in geckos before and after the infection by t-test (R).

### *Histopathological analysis*

After at least 24 hours fixation in alcohol formalin glacial acetic fixative (AFA), tissue samples from G3h group and all the snake tissues were embedded in paraffin and 6  $\mu\text{m}$  sections were cut transversally in four planes, stained with haematoxylin–eosin (H&E) for histology in St. Anne's University Hospital, Brno. Stained slides were examined under a light microscope to assess the distribution and morphology of the larvae as well as the tissue response. Additionally, the Chromotrope 2R staining was performed following a modification of the original method described by Lendrum *et al.*, 1962. Briefly, tissue sections (4  $\mu\text{m}$ ) were deparaffinized and hydrated through graded alcohols to water. The slides were then stained in a solution containing 1% Chromotrope 2R and 0.5% phenol in distilled water at

56°C for 30 minutes. Slides were counterstained with Mayer's haematoxylin for nuclear detail, dehydrated, cleared, and mounted. This method selectively stains eosinophilic granules bright red while providing excellent contrast for nuclei and other tissue elements. The Sirius Red staining was carried out according to the method described by Llewellyn, 1970. Tissue sections were deparaffinized and rehydrated through graded alcohols. Nuclei were stained using a Weigert's iron haematoxylin. The slides were then stained in an alkaline Sirius Red solution (0.5% Sirius Red F3B in a solution adjusted to pH 8–9) for 2 hours at room temperature. After staining, sections were rinsed thoroughly with distilled water, dehydrated, cleared, and mounted. This method stains amyloid, eosinophil granules and Paneth cells red, providing clear visualization against a contrasting background. Special stains were carried out at the Institute of Clinical and Experimental Medicine in Prague.

## Results

### *L3 survived and remained infective in all the tested animals*

Tissues of all individuals from G2, G3h and G3c were artificially digested following dissection and sample collection for the qPCR and histopathological examination. In the group G2, four out of five individuals contained tens of live L3 mostly in their skeletal muscles of the body, less in tail muscle and only a small fraction in viscera, mostly in liver. In the group G3h (two individuals euthanized one month post infection), hundreds of live L3 were present in body and tail musculature and only a small fraction (13 in one individual and zero in the other one) in liver. In these animals, approximately half of each organ was artificially digested, and the other half was used for the histopathological examination, which means the total number of L3 in each tissue would be approximately twice as large as in the digested part. In the G3c group, where animals were euthanized six months post-infection, live L3 were still found, predominantly in the musculature. However, their numbers were

lower compared to those observed in animals euthanized one month post-infection. The animals from G3s were used for the snake infection. Two snakes ingested sacrificed geckos from G3s group spontaneously and one snake was force-fed. Live L3 were found in all snakes (euthanized one month post infection), predominantly in the gastrointestinal tract wall, less in liver and somatic musculature.

All the Wistar rats inoculated with L3 from geckos (one as well as six months post infection) were shedding L1 45 dpi, thereby confirming the viability of the L3 larvae and their infectivity for the definitive host. Detailed counts of larvae retrieved from each individual are provided in Table 1, while a graph illustrating the larval distribution is shown in Figure 2.

#### *Muscles were the most intensively infected tissues in geckos*

For some of the tested groups, the data on infection intensities were insufficient to meet the assumptions of the Shapiro-Wilk test. Given the distributional characteristics of the data and the violation of normality assumptions, we proceeded with the Kruskal-Wallis test, which does not assume normality. A Kruskal-Wallis test showed a statistically significant difference in infection intensities across the leopard geckos' tissues,  $\chi^2(4) = 10.318$ ,  $p = 0.0354$ . Post-hoc pairwise comparisons using Dunn's test with Bonferroni correction revealed significant differences between muscles and other tissues ( $p < 0.05$ ), indicating higher infection intensities in muscles compared to other tissues in leopard geckos. A graph illustrating the distribution of tissues with varying DNA amounts of *A. cantonensis* is shown in Figure 3.

#### *Histopathological analysis*

The larvae of *A. cantonensis* were observed in the endomysium of skeletal muscle tissue of geckos (Figure 4) and in the liver of geckos (Figure 6) and liver and stomach wall of a corn

snake (Figure 5). The tissue inflammatory reaction was mild to moderate and morphologically similar in both species. The inflammatory infiltrate was composed mainly of macrophages and small lymphocytes. No obvious eosinophils were observed in haematoxylin-eosin stain or in Sirius Red and Chromotrope 2R stain (Supplementary Figures 2 and 3). There is an increased accumulation of lipids in the cytoplasm of hepatocytes.

#### *Infection of paratenic hosts did not lead to clinical symptoms*

None of the examined individuals, including both geckos and snakes, showed any clinical deterioration in their health status. However, we observed elevated levels of CK and GLDH, exceeding the reference range, in three out of five individuals in the G2 group (1000 L3 dose). These findings suggest potential indications of muscle damage (CK) and liver stress or damage (GLDH). In haematological parameters, we documented elevated monocytes in two individuals out of 5 in G2 and none in G1 (100 L3 dose) and G0 (negative control) eosinophils were elevated in all individuals throughout all tested groups. However, statistical analysis (ANOVA) of the blood parameters did not show any significant difference among the negative control, G1 (100 L3 dose) and G2 (1000 L3 dose);  $p > 0.05$ . Tested parameters and their values (as well as the used reference ranges) can be found in a Supplementary Table 1.

#### **Discussion**

Complexity of the *A. cantonensis* life cycle apparently shows the importance of the parasite transmission within food webs. In this study, we aimed to provide more precise data on the transmission of *A. cantonensis* between two distinct groups of reptiles. We investigated the potential of geckos (or other small saurians) to serve as a source of infection for mammalian hosts. Additionally, we assessed the impact of the nematode on the fitness of these paratenic

hosts. Our findings are in general consistent with the previous studies by Radomyos *et al.* (1992) and Ash (1968), however Radomyos *et al.* (1992) confirmed L3 presence predominantly in liver and in our case, somatic musculature was the most intensively infected tissue. It is worth noting that examining the whole musculature of animals as large as monitor lizards can lead to omitting the presence of small nematode larvae, therefore we used relatively small sub-adult leopard geckos to enable examining whole bodies.

Our study provides new insight into the pathophysiology of the nematode's infection in studied reptile species including histopathological examination, as well as evaluating the infectivity after a long-term survival in geckos. Additionally, this is a first report of intermediation (transmission of L3 between hosts of the same level (Colella *et al.*, 2015; Modrý *et al.*, 2021)) between paratenic hosts in case of *A. cantonensis*. Larvae of the parasite were able to survive in leopard geckos for as long as six months, even though their numbers dropped over time. Furthermore, these larvae remained infective for the definitive host.

Snakes were infected with geckos which were inoculated with approx. 10,000 L3. Since whole bodies of geckos were fed to snakes, we were not able to evaluate the number of larvae in G3s, however based on the results from artificial digestion of G3h group where approximately half of each tissue was examined, we presume each snake ingested a gecko containing hundreds of L3 (approx. 500). The most significant difference between snakes and geckos was in the localization of larvae, while in geckos, most larvae were found in body musculature and significantly less in viscera (i.e., mostly in liver based on artificial digestion and qPCR analysis), in snakes, most larvae were found in the intestinal wall. The larvae localization in snakes in our study resembles the situation in crustaceans and fish, where larvae do not migrate as they do in lizards (Wallace & Rosen, 1967; Wallace, Rosen, *et al.*, 1966). However, the larval survival in snakes is prolonged.

Neither geckos nor snakes did show any changes in their clinical status and blood parameters before and after the infection. Histopathological examination revealed that the arrested larvae and their migration induced lymphohistiocytic inflammation (early stage of granulomatous inflammation). However, immunological responses leading to these reactions do not appear to alter haematological parameters or affect the clinical status of the individuals. While we anticipated a notable increase in biochemical markers associated with larval migration in organs such as the liver and muscles (ALT, AST, GLDH and CK) following infection, our statistical analysis did not yield significant results. However, it's noteworthy that in the majority of individuals infected with 1,000 L3, levels of CK and GLDH, typically indicative of muscle and liver damage respectively, were higher than the reference range and this elevation was not reported in the low dose group and the negative control. Furthermore, it's important to acknowledge the potential for subclinical impacts on the health of reptiles, even in the absence of significantly elevated blood markers. In this case, the presence of larvae in the muscles and liver likely triggered at least a minor reaction, although the effect on the biochemical parameters remained statistically insignificant. In general, studies on the host-parasite interaction between metastrongylid nematodes, i.e., larvae and their paratenic hosts are lacking, however granuloma formation (similar to aggregations of inflammatory cells in this study) was previously suggested to provide an effective evasion mechanism in *A. cantonensis* infected giant African snail *L. fulica* (Lopes-Torres *et al.*, 2024). Not surprisingly, all the larvae in our study found in the histopathological sections were encapsulated inside a granuloma which seems to provide a barrier between a host and a parasite without causing a serious harm even with a quite high parasite load (Brockelman *et al.*, 1976). The observed liver lipidosis is likely physiological, as certain poikilothermic animals, including reptiles, tend to accumulate lipids in the liver depending on the season (e.g., estivation or dormancy) (Price, 2017).

As previously mentioned, reptiles are part of the human diet in several Asian countries where *A. cantonensis* originates, and cases of eosinophilic meningitis resulting from their consumption have been reported. The parasite is now spreading to new areas, including closer to continental Europe, where lizard consumption is not common. Nevertheless, lizards and snakes remain a potential risk for neuroangiostrongyliasis in wildlife and contribute to the further spread of the parasite in regions where rats prey on lizards. We used doses of 100, 1,000, and 10,000 L3 larvae to represent realistic scenarios for a lizard to harbour, considering that a single small snail can easily contain hundreds to thousands of L3 larvae (Kim *et al.*, 2014; Rollins *et al.*, 2021). In all experimental groups infected with various larval doses, only a fraction of L3 larvae survived in the reptile tissues. However, these doses would be still sufficient to cause serious harm to animals that prey on them in each ecosystem. Some larvae may have exited the gastrointestinal tract without leaving the lumen, entering the intestinal wall and migrating to the tissues. Based on our results and previous studies (Radomyos *et al.*, 1992), saurians meet *all* the attributes of true paratenic hosts, as they can harbour live larvae for extended periods, unlike crustaceans or fish, which show only limited larval migration and only short period survival of L3 (Wallace & Rosen, 1967; Wallace, Rosen, *et al.*, 1966). Lizards and geckos themselves are prey for numerous higher trophic level predators, such as birds of prey, snakes, and mammals. This positions them as crucial intermediates, transferring energy and nutrients up the food chain (Bels *et al.*, 2019). Considering the role lizards play in the food chain and their serving as paratenic hosts, we would like to underline how they can facilitate the persistence and spread of *A. cantonensis* within ecosystems.

The life cycle of *A. cantonensis* appears to be highly opportunistic, given the parasite's ability to infect a wide variety of hosts and utilize numerous routes of infection. Additionally, *A. cantonensis*, with rats as definitive hosts and a broad range of gastropods as intermediate

hosts, serves as a suitable laboratory model for studying similar metastrongylid nematodes' circulation routes, due to its relative ease of maintenance in laboratory conditions.

### **Abbreviations**

ALT = Alanine aminotransferase

AST = Aspartate aminotransferase

ALP = Alkaline phosphatase

GLDH = Glutamate dehydrogenase

CK = Creatine kinase

TP = Total protein

**Author's contribution.** D.M. and L.A. designed the experiments, L.A., A.Š., J.K., K.J., P.C. and V.V. performed the experiments, L.N. and M.K. conducted the histopathological examination, L.A. wrote the manuscript, D.M. supervised the experiments and the manuscript.

**Financial support.** This study was supported by SEAEUROPEJFS19IN-053 and Czech Science Foundation grant no. 22-26136S. The work of Lucia Anettova was also supported by Specific research – support of student projects, n. MUNI/IGA/1182/2021.

**Competing interests.** The authors declare there are no conflicts of interest.

**Ethical standards.** We hereby declare that all requirements for animal experiments were rigorously fulfilled in accordance with established guidelines and protocols. Animal handling and experimental procedures adhered to ethical standards and were conducted under the approval of the Ministry of Education, Youth and Sports (no. MSMT-22064/2022-4).



## References

- Anderson, RC. (2000). Nematode parasites of vertebrates: Their development and transmission (2nd). CABI Publishing.
- Anettová, L, Izquierdo-Rodriguez, E, Foronda, P, Baláž, V, Novotný, L, & Modrý, D. (2022). Endemic lizard *Gallotia galloti* is a paratenic host of invasive *Angiostrongylus cantonensis* in Tenerife, Spain. *Parasitology*, 149(7), 934–939.
- Ash, LR. (1968). The occurrence of *Angiostrongylus cantonensis* in frogs of New Caledonia with observations on paratenic hosts of metastrongyles. *The Journal of Parasitology*, 432–436.
- Bels, V, Painsavoine, AS, Zghikh, LN, Paulet, E, Pallandre, JP, & Montuelle, SJ. (2019). Feeding in lizards: Form–function and complex multifunctional system. In V Bels & IQ Whishaw (Eds.), *Feeding invertebrates: Evolution, morphology, behavior, biomechanics* (pp. 469–525). Springer International Publishing.
- Brockelman, C, Chusatanond, W, & Baidikul, V. (1976). Growth and localization of *Angiostrongylus cantonensis* in the molluscan host, *Achatina fulica*. *The Southeast Asian Journal of Tropical Medicine and Public Health*, (1), 30–37.
- Burns, RE, Bicknese, EJ, Qvarnstrom, Y, DeLeon-Carnes, M, Drew, CP, Gardiner, CH, & Rideout, BA. (2014). Cerebral *Angiostrongylus cantonensis* infection in a captive African pygmy falcon (*Polihierax semitorquatus*) in southern California. *Journal of Veterinary Diagnostic Investigation*, 26(5), 695–698.
- Bush, AO. (2001). *Parasitism: The diversity and ecology of animal parasites*. Cambridge university press.
- Červená, B, Modrý, D, Fecková, B, Hrazdilová, K, Foronda, P, Alonso, AM, Lee, R, Walker, J, Niebuhr, CN, Malik, R, *et al.* (2019). Low diversity of *Angiostrongylus cantonensis*

- complete mitochondrial DNA sequences from Australia, Hawaii, French Polynesia and the Canary Islands revealed using whole genome next-generation sequencing. *Parasites & Vectors*, 12(1), 1–13.
- Colella, V, Giannelli, A, Brianti, E, Ramos, RAN, Cantacessi, C, Dantas- Torres, F, & Otranto, D. (2015). Feline lungworms unlock a novel mode of parasite transmission. *Scientific Reports*, 5(1), 13105.
- Delgado-Serra, S, Sola, J, Negre, N, & Paredes-Esquivel, C. (2022). *Angiostrongylus cantonensis* nematode invasion pathway, Mallorca, Spain. *Emerging infectious diseases*, 28(6), 1163.
- Hidelaratchi, M, Riffsy, M, & Wijesekera, J. (2010). A case of eosinophilic meningitis following monitor lizard meat consumption, exacerbated by anthelmintics. *Ceylon Medical Journal*, 50(2).
- Jaume-Ramis, S, Martínez-Ortí, A, Delgado-Serra, S, Bargues, MD, MasComa, S, Foronda, P, & Paredes-Esquivel, C. (2023). Potential intermediate hosts of *Angiostrongylus cantonensis* in the European Mediterranean region (Mallorca, Spain). *One Health*, 17, 100610.
- Kanpittaya, J, Jitpimolmard, S, Tiamkao, S, & Mairiang, E. (2000). MR findings of eosinophilic meningoencephalitis attributed to *Angiostrongylus cantonensis*. *American Journal of Neuroradiology*, 21(6), 1090–1094.
- Kim, D, Stewart, T, Bauer, R, & Mitchell, M. (2002). *Parastrongylus* (= *Angiostrongylus*) *cantonensis* now endemic in Louisiana wildlife. *Journal of Parasitology*, 88(5), 1024–1026.
- Kim, JR, Hayes, KA, Yeung, NW, & Cowie, RH. (2014). Diverse gastropod hosts of *Angiostrongylus cantonensis*, the rat lungworm, globally and with a focus on the Hawaiian Islands. *PloS One*, 9(5), e94969.

- Lendrum, AC, Fraser, DS, Slidders, W, & Henderson, R (1962). Studies on the character and staining of fibrin. *Journal of clinical pathology*, 15(5), 401.
- Llewellyn, BD. (1970). An improved Sirius red method for amyloid. *The Journal of medical laboratory technology*, 27(3), 308-309.
- Lopes-Torres, EJ, de Oliveira Simões, R, Mota, EM, & Thiengo, SC. (2024). A structural analysis of host–parasite interactions in *Achatina fulica* (Giant African snail) infected with *Angiostrongylus cantonensis*. *Pathogens*, 13(1).
- Martín-Carrillo, N, Feliu, C, Abreu-Acosta, N, Izquierdo-Rodriguez, E, Dorta-Guerra, R, Miquel, J, Abreu-Yanes, E, Martín-Alonso, A, García-Livia, K, Quispe-Ricalde, MA, *et al.* (2021). A peculiar distribution of the emerging nematode *Angiostrongylus cantonensis* in the Canary Islands (Spain): Recent introduction or isolation effect? *Animals*, 11(5), 1267.
- Meyerholz, DK, Griffin, MA, Castilow, EM, & Varga, SM. (2009). Comparison of histochemical methods for murine eosinophil detection in an RSV vaccine-enhanced inflammation model. *Toxicologic pathology*, 37(2), 249–255.
- Modrý, D, Fecková, B, Putnová, B, Manalo, SM, & Otranto, D. (2021). Alternative pathways in *Angiostrongylus cantonensis* (Metastrongyloidea: Angiostrongylidae) transmission. *Parasitology*, 148(2), 167–173.
- Monks, DJ, Carlisle, MS, Carrigan, M, Rose, K, Spratt, D, Gallagher, A, & Prociv, P. (2005). *Angiostrongylus cantonensis* as a cause of cerebrospinal disease in a yellow tailed black cockatoo (*Calyptorhynchus funereus*) and two tawny frogmouths (*Podargus strigoides*). *Journal of Avian Medicine and Surgery*, 19(4), 289–293.
- Odening, K. (1976). Conception and terminology of hosts in parasitology. *Advances in Parasitology*, 14, 1–93.
- Pandian, D, Najer, T, & Modrý, D. (2023). An overview of *Angiostrongylus cantonensis*

- (Nematoda: Angiostrongylidae), an emerging cause of human angiostrongylosis on the Indian subcontinent. *Pathogens*, 12(6), 851.
- Price, ER. (2016). The physiology of lipid storage and use in reptiles. *Biological Reviews*, 92(3), 1406–1426. doi:10.1111/brv.12288
- Radomyos, P, Tungtrongchitr, A, & Praewanich, R. (1992). Experimental infection of yellow tree monitor (*Varanus bengalensis*) and related species with *Angiostrongylus cantonensis*. *Southeast Asian Journal of Tropical Medicine and Public Health*.
- Radomyos, P, Tungtrongchitr, A, Praewanich, R, Khewwatchan, P, Kantangkul, T, Junlananto, P, & Ayudhya, S. (1994). Occurrence of the infective stage of *Angiostrongylus cantonensis* in the yellow tree monitor (*Varanus bengalensis*) in five Provinces of Thailand. *The Southeast Asian Journal of Tropical Medicine and Public Health*, 25(3), 498–500.
- Rollins, RL, Cowie, RH, Echaluse, MV, & Medeiros, MC. (2021). Host snail species exhibit differential *Angiostrongylus cantonensis* prevalence and infection intensity across an environmental gradient. *Acta Tropica*, 216, 105824.
- Sears, WJ, Qvarnstrom, Y, Dahlstrom, E, Snook, K, Kaluna, L, Baláž, V, Fecková, B, Šlapeta, J, Modrý, D, Jarvi, S, *et al.* (2021). AcanR3990 qPCR: A novel, highly sensitive, bioinformatically informed assay to detect *Angiostrongylus cantonensis* infections. *Clinical Infectious Diseases*, 73(7), e1594–e1600.
- Spratt, DM. (2015). Species of *Angiostrongylus* (nematoda: Metastrongyloidea) in wildlife: A review. *International Journal for Parasitology: Parasites and Wildlife*, 4(2), 178–189.
- Turck, HC, Fox, MT, & Cowie, RH. (2022). Paratenic hosts of *Angiostrongylus cantonensis* and their relation to human neuroangiostrongyliasis globally. *One Health*, 100426.
- Wallace, GD, & Rosen, L. (1967). Studies on eosinophilic meningitis. 4. Experimental infection of fresh-water and marine fish with *Angiostrongylus cantonensis*. *American*

*Journal of Epidemiology*, 85(3), 395–402.

- Wallace, GD, Rosen, L, *et al.* (1966). Studies on eosinophilic meningitis. 2. Experimental infection of shrimp and crabs with *Angiostrongylus cantonensis*. *American journal of epidemiology*, 84(1), 120–131.
- Wangpan, T, & Tang jang, S. (2012). Monitor lizards and geckos used in traditional medicine face extinction and need protection. *Current science*, 102(9), 1248.
- Yang, L, Darasavath, C, Chang, K, Vilay, V, Sengduangphachanh, A, Adsamouth, A, Vongsouvath, M, Keolouangkhot, V, & Robinson, MT. (2021). Cluster of angiostrongyliasis cases following consumption of raw monitor lizard in the Lao People's Democratic Republic and review of the literature. *Tropical Medicine and Infectious Disease*, 6(3), 107.
- Zaaf, A, Herrel, A, Aerts, P, & De Vree, F. (1999). Morphology and morphometrics of the appendicular musculature in geckoes with different locomotor habits (Lepidosauria). *Zoomorphology*, 119(1), 9–22.

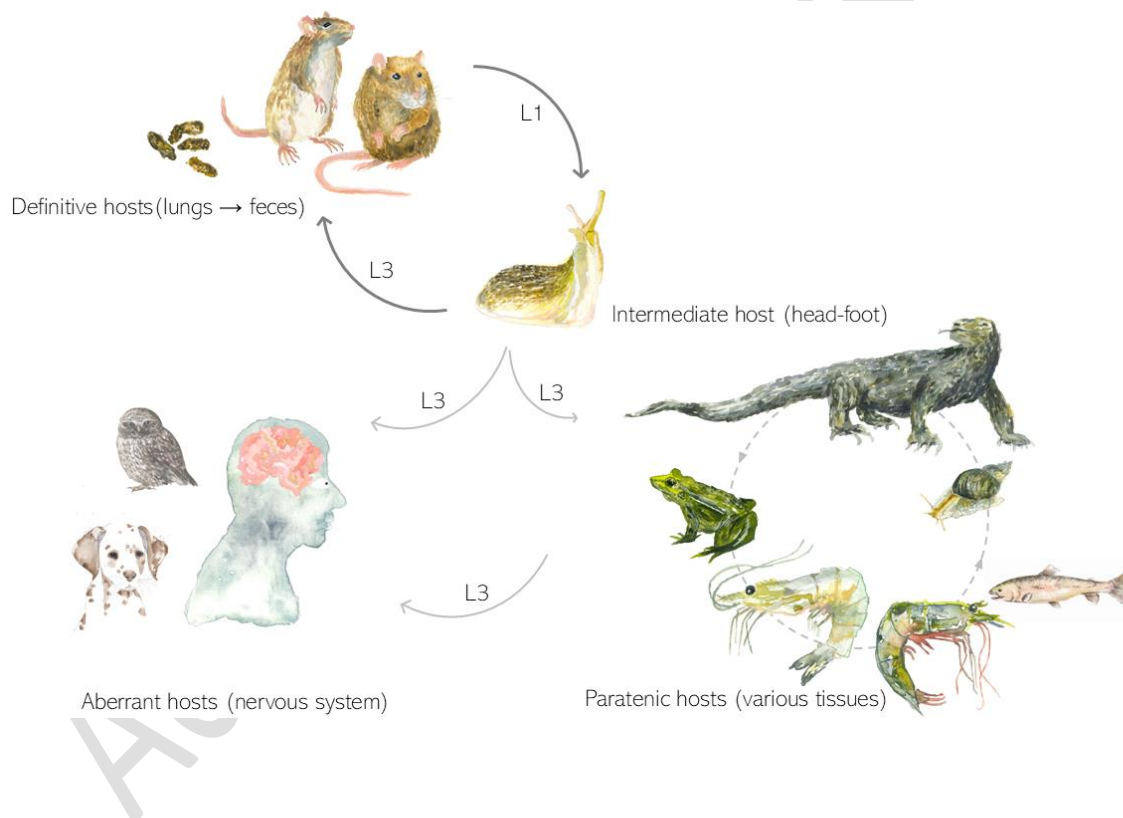
Accepted Manuscript

**Table 1.** Numbers of collected third stage larvae (L3) from the tissues of leopard geckos and corn snakes infected with *A. cantonensis*. Only liver of all the viscera contained live larvae after artificial digestion. Corn snakes (*Pantheropsis guttatus*) were infected via intermediation, i.e., each corn snake ingested a gecko infected with approx. 10,000 L3 one month post infection. Based on another group infected the same way with the same amount of L3, we assume each snake ingested a gecko containing approx. 500 L3.

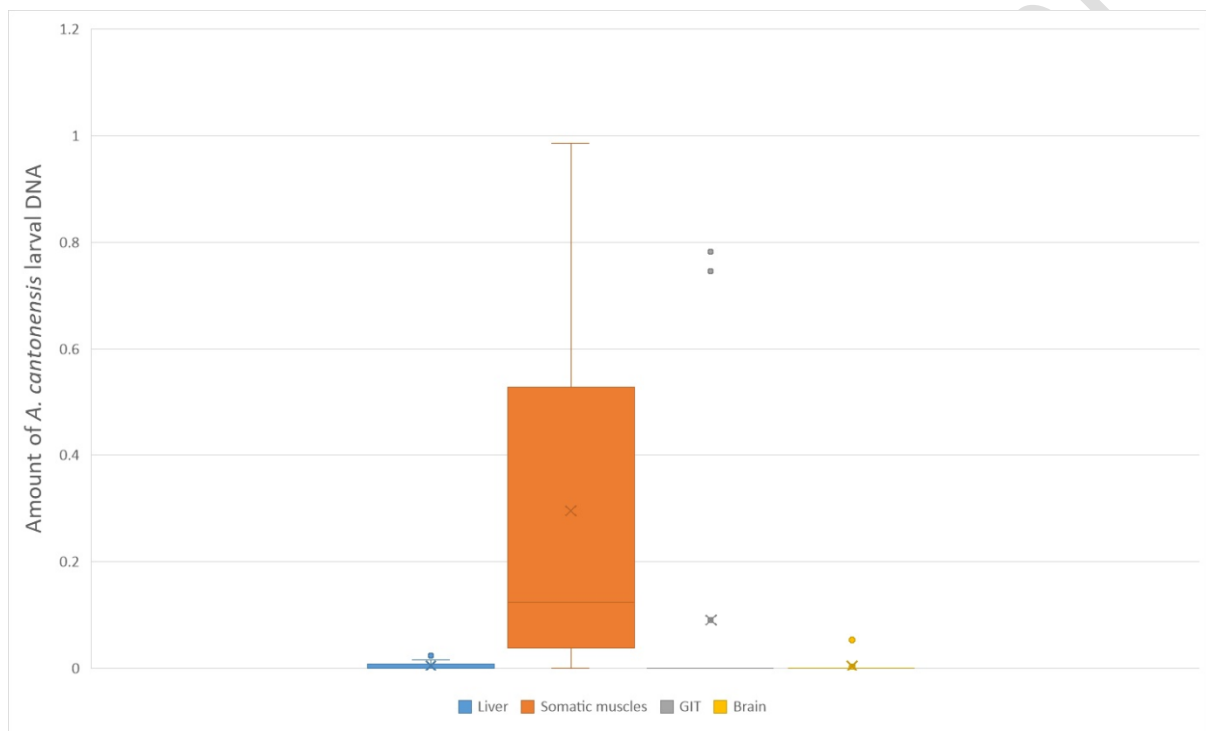
Individual	L3 in body muscle	L3 in tail muscle	L3 in liver
G2-1	0	0	0
G2-2	12	1	1
G2-3	36	8	1
G2-4	33	16	4
G2-5	32	8	1
G3h-1	242	78	0
G3h-2	208	62	13
G3c-1	57	30	0
G3c-2	3	22	1
G3c-3	14	6	0
G3c-4	4	16	0
G3c-5	88	10	2

## Figure Legends

**Figure 1.** Complex life cycle of *A. cantonensis*. Rats serve as definitive hosts and get infected by third-stage larvae (L3) from gastropods. Adults develop in their pulmonary arteries. Eggs are shed in rats' feces. Gastropods are infected by first-stage larvae (L1) by consuming the rat feces and L3 develops in their tissues. Many species of poikilotherms can serve as paratenic hosts and larvae can be transmitted among them as well as to the definitive or aberrant hosts. Aberrant hosts get infected by L3 (from gastropods, paratenic hosts or contaminated food or water) and can suffer from neurological disorder.

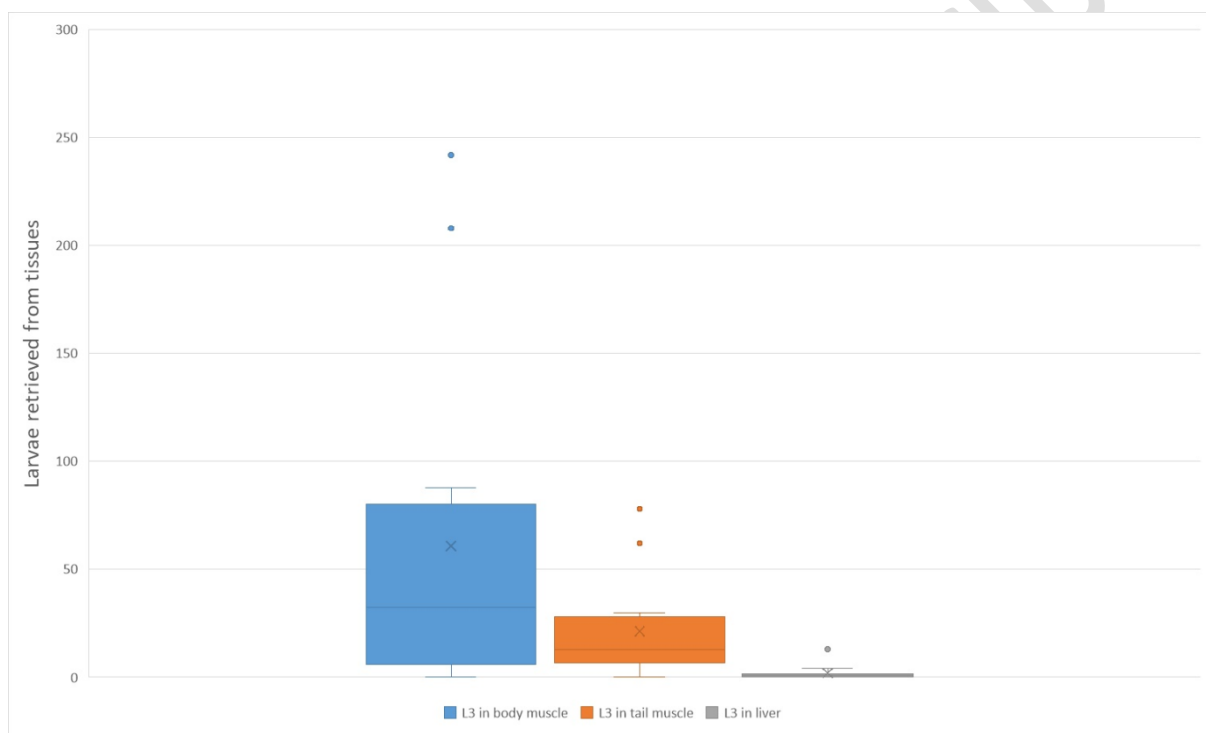


**Figure 2.** A boxplot graph depicting larval burden with *A. cantonensis* L3 in various tissues of experimentally infected leopard geckos, as counted from the quantitative PCR analysis (Supplementary Table 1). Somatic musculature is the most intensively infected tissue. Negative tissues were excluded from the graph. The X marks the average value, the median is indicated by a line across the box. The whiskers on box plots show the ranges of Q1 and Q4 up to the most extreme data points.

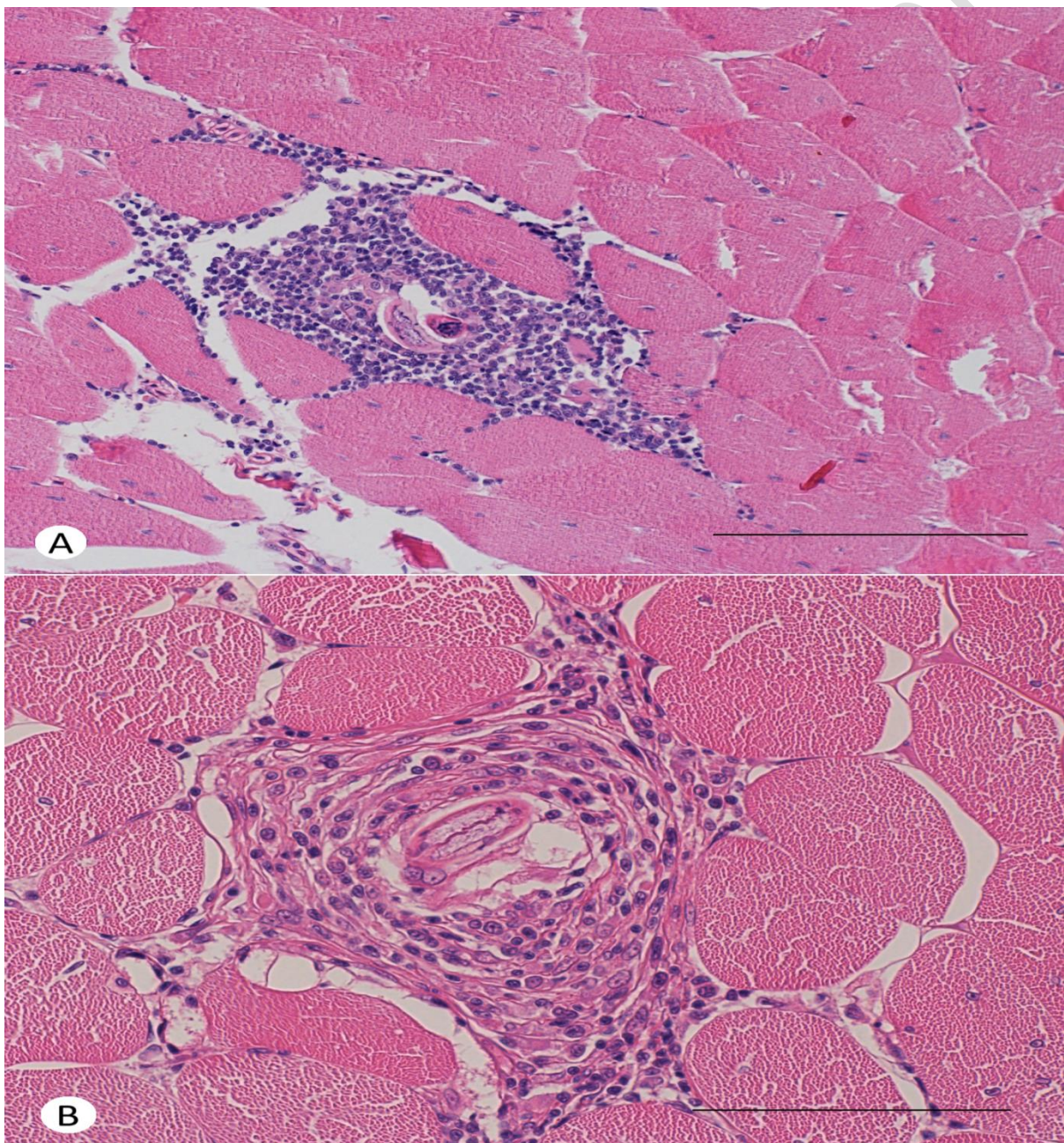




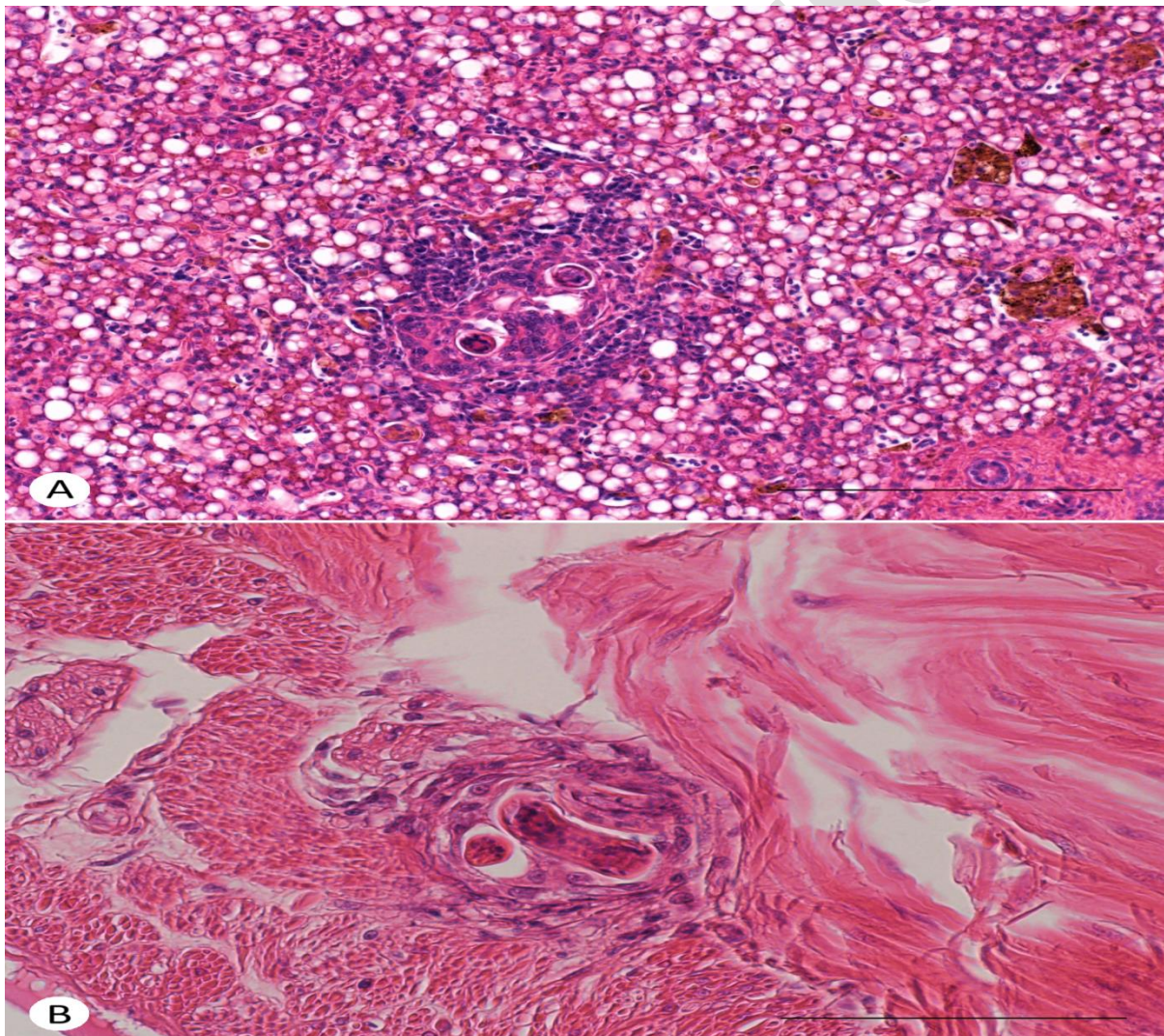
**Figure 3.** A boxplot graph depicting L3 of *A. cantonensis* from various tissues of experimentally infected leopard geckos (Table 1). Somatic musculature is the most intensively infected tissue. The X marks the average value, the median is indicated by a line across the box. The whiskers on box plots show the ranges of Q1 and Q4 up to the most extreme data points.



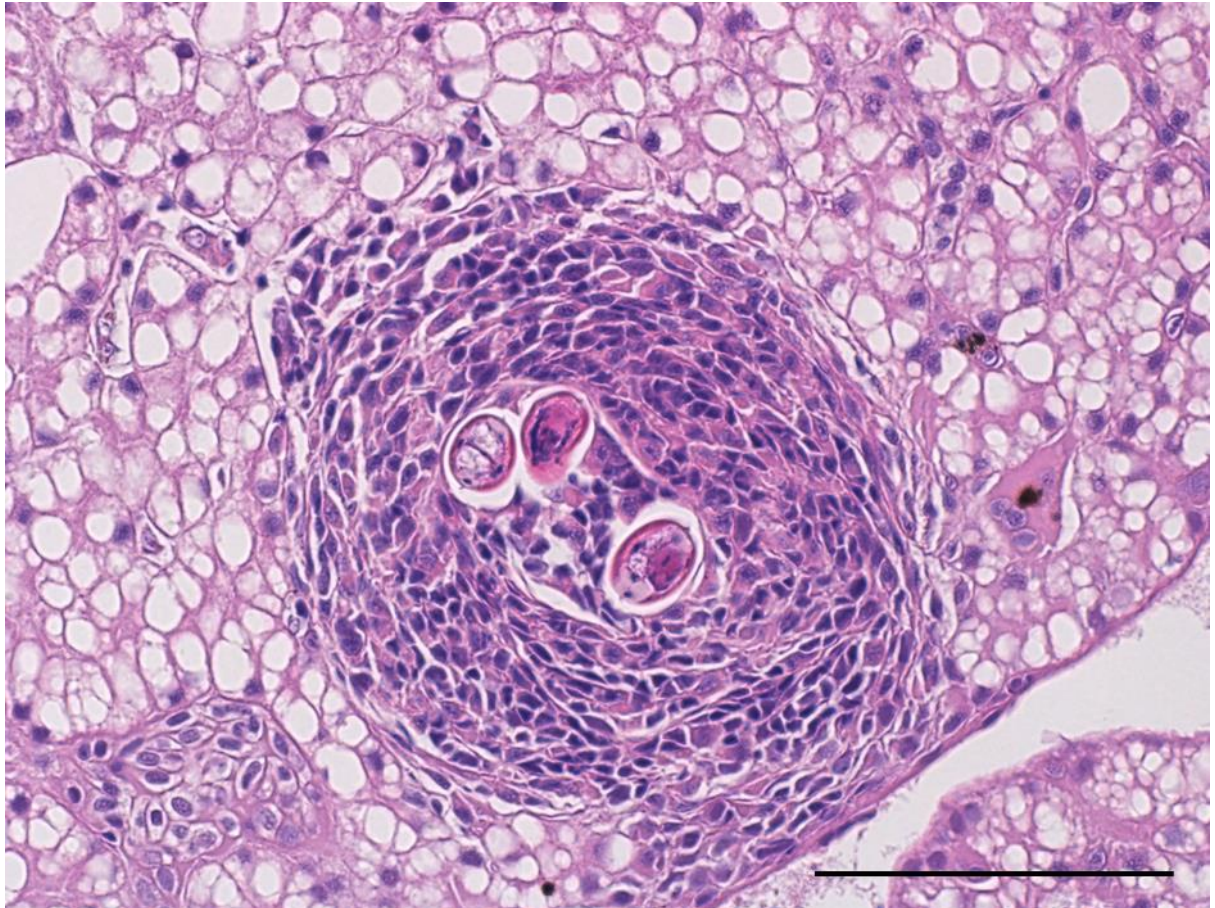
**Figure 4.** Histological section of skeletal muscle of a leopard gecko (*Eublepharis macularius*) 30 days post infection by *A. cantonensis*. In both cases, endomysium of a skeletal muscle is focally expanded by inflammatory infiltrate around larva of *A. cantonensis*. **A:** The inflammation is composed mainly of macrophages with moderate numbers of small lymphocytes. Scale bar = 200  $\mu\text{m}$ . **B:** The inflammation is composed mainly of macrophages with occasional small lymphocytes. Haematoxylin – eosin stain. Scale bar = 100  $\mu\text{m}$ .



**Figure 5.** Histological section of viscera of a corn snake (*Pantheropsis guttatus*) 27 days post infection by *A. cantonensis* (snakes were infected by intermediates, i.e., ingestion of an infected leopard gecko). **A:** Hepatic parenchyma is focally expanded by inflammatory infiltrate around larvae of *A. cantonensis*. The inflammation is composed mainly of macrophages with moderate to large numbers of small lymphocytes at the periphery. The cytoplasm of hepatocytes is expanded by large lipid vacuoles (lipidosis). Scale bar = 200  $\mu$ m. **B:** Subserosal tissue of the stomach at the transition to muscularis externa is expanded by focal accumulation of macrophages around larvae of *A. cantonensis*. Haematoxylin – eosin stain. Scale bar = 100  $\mu$ m.

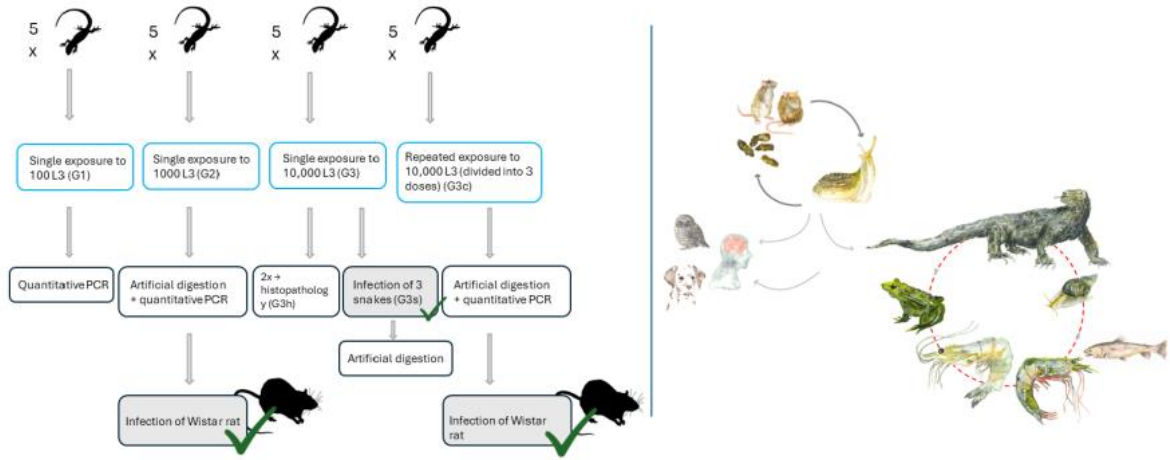


**Figure 6.** Histological section of a liver of a leopard gecko (*Eublepharis macularius*) 30 days post infection by *A. cantonensis*. Hepatic parenchyma is focally expanded by inflammatory infiltrate around larvae of *A. cantonensis*. The cytoplasm of hepatocytes is expanded by large lipid vacuoles (lipidosis). The inflammation is composed mainly of macrophages with occasional small lymphocytes. Haematoxylin – eosin stain. Scale bar = 100  $\mu$ m.



ACCEPTED

# Graphical\_abstract



Accepted Manuscript