

Composition and metabolism of the intestinal microbiota in consumers and non-consumers of yogurt

Elise Alvaro¹, Claude Andrieux¹, Violaine Rochet¹, Lionel Rigottier-Gois¹, Pascale Lepercq¹, Malène Sutren¹, Pilar Galan², Yvonne Duval¹, Catherine Juste¹ and Joël Doré^{1*}

¹Unité d'Ecologie et de Physiologie du Système Digestif, Institut National de la Recherche Agronomique, 78352 Jouy-en-Josas, France

²Unité de Recherche en Epidémiologie Nutritionnelle, Institut National de la Santé et de la Recherche Médicale/Institut National de la Recherche Agronomique/Conservatoire National des Arts et Métiers, CNAM, 5 rue Vertbois, 75003 Paris, France

(Received 12 April 2006 – Revised 8 August 2006 – Accepted 10 August 2006)

The objective of the present study was to evaluate the impact of a regular consumption of yogurt on the composition and metabolism of the human intestinal microbiota. Adult subjects were selected on the basis of daily food records and divided into two groups: yogurt consumers (at least 200 g yogurt consumed per d, n 30); non-consumers (no yogurt, n 21). Their faecal microbiota was analysed using molecular methods (*in situ* hybridisation and PCR amplification combined with separation by denaturing gel electrophoresis) and its metabolic characteristics were assessed by measuring glycosidase, β -glucuronidase and reductase activities and profiling SCFA, neutral sterols and bile acids. The yogurt starter *Lactobacillus delbrueckii* ssp. *bulgaricus* (identity confirmed by 16S rRNA sequencing) was detected in 73 % of faecal samples from fermented milk consumers v. 28 % from non-consumers ($P=0.003$). In yogurt consumers, the level of Enterobacteriaceae was significantly lower ($P=0.006$) and β -galactosidase activity was significantly increased ($P=0.048$). In addition, within this group, β -galactosidase activity and the *Bifidobacterium* population were both positively correlated with the amount of fermented milk ingested (r 0.66, $P<0.0001$ and r 0.43, $P=0.018$, respectively). Apart from these effects, which can be considered beneficial to the host, no other major differences could be detected regarding the composition and metabolic activity of intestinal microbiota.

Fermented milk: Probiotics: Yogurt: *Lactobacillus delbrueckii* ssp. *bulgaricus*: Intestinal microbiota

Analysis of the human intestinal microbiota has rapidly evolved during the past 10 years (Tannock *et al.* 2000). Molecular techniques, based on detecting nucleotide sequences of 16S rRNA using fluorescent *in situ* hybridisation (FISH) and PCR amplification combined with separation by denaturing gel electrophoresis, have enabled a good assessment of the composition of the microbiota and the complexity of the dominant species present (Blaut *et al.* 2002). Moreover, these methods provide an opportunity to estimate the transient presence of food-borne bacteria within the predominant intestinal bacterial population (Alander *et al.* 1999; Tannock *et al.* 2000; Rochet *et al.* 2006).

Intestinal microbiota can induce both positive and negative effects on host physiology (Gorbach, 1986; Macfarlane & Cummings, 1991) and there has been great interest in the feasibility of modulating intestinal microbiota in a beneficial way in order to improve health. In this field, lactic acid bacteria with probiotic properties have been considered as potentially useful (Shortt, 1999; Teitelbaum & Walker, 2002; Guarner *et al.* 2005). Lactic acid bacteria have been used traditionally in food fermentation for thousands of years. Yogurt

is milk fermented using a combination of *Lactobacillus delbrueckii* ssp. *bulgaricus* and *Streptococcus salivarius* ssp. *thermophilus*. More recently, other bacteria, mainly lactobacilli or bifidobacteria, have been combined with yogurt starters to produce fermented milks with specific functional properties related to health. Fermented milks deliver a large number of lactic acid bacteria into the gastrointestinal tract. These micro-organisms are capable of partially resisting gastric and bile secretions *in vitro* and *in vivo* (Mater *et al.* 2005) and can deliver enzymes and other substances into the intestines (Marteau & Rambaud, 1993; Oozeer *et al.* 2002, 2005). The ability of yogurt to provide β -galactosidase and reduce symptoms of lactose intolerance has been well documented (Marteau & Rambaud, 1993; Sanders, 1993). Lactic acid bacteria have also been claimed to modify the intestinal environment. Some studies have shown that *L. acidophilus*, *L. casei* and *Bifidobacterium bifidum* can decrease potentially harmful enzymes of the resident microbiota such as β -glucuronidase and nitroreductase (Goldin, 1986; Marteau *et al.* 1990; Guerin-Danan *et al.* 1998). These results were obtained during clinical trials involving volunteers who for a few

Abbreviations: FISH, fluorescent *in situ* hybridisation; TTGE, temporal temperature gradient gel electrophoresis analysis.

* **Corresponding author:** Dr Joël Doré, fax +33 1 34 65 24 92, email joel.dore@jouy.inra.fr

weeks consumed a controlled diet containing fermented milk, this period of consumption being compared with an initial period without these milk products.

The objective of the present study was to compare the composition and metabolism of the faecal microbiota in human subjects who regularly consumed at least 200 g yogurt per d or no yogurt. The effects of consuming dairy products on the dominant intestinal microbiota were evaluated using molecular approaches: *in situ* hybridisation and PCR amplification combined with separation by denaturing gel electrophoresis. Micro-organisms from fermented milk were monitored in faecal samples using specific primers. The following metabolic characteristics of the faecal microbiota were studied: glycosidases involved in carbohydrate hydrolysis (α - and β -galactosidase and β -glucosidase) and in mucin degradation (neuraminidase, N-acetyl-galactosaminidase and α -L-fucosidase), β -glucuronidase, nitrate and azoreductase activities as well as bile acid and neutral sterol microbial conversions. SCFA, NH₃ and iso-acids were also investigated as markers of glycolytic and proteolytic fermentation.

Materials and methods

Subjects

Fifty-one healthy subjects living in the Paris area were included in the study. They were selected from the participants in the SU.VI.MAX cohort (Herberg *et al.* 1998, 2004), who were providing regular information on their dietary intake by completing at least ten 24-h record questionnaires over a period of 2.5 years. All subjects consumed their usual diet, with group Y containing subjects declaring an intake of 200–400 g yogurt per d (246 (SE 7)) and group N, non-consumers. Group Y included thirty individuals (aged 35–60 years, mean age 46 years, twelve males and eighteen females) while group N included twenty-one individuals (aged 35–60 years, mean age 47 years, nine males and twelve females), because of dietary habits in the Paris area where most people are used to consuming yogurt. In group Y, the subjects regularly consumed soft white cheese (fromage blanc, 97 (SE 22) g/d) and in group N, only occasionally (23 (SE 26) g/d) ($P=0.032$). No differences were observed concerning the consumption of milk (82 (SE 21) and 67 (SE 25) g/d in groups Y and N, respectively, $P=0.642$) or cheese (46 (SE 10) and 38 (SE 11) g/d in groups Y and N, respectively, $P=0.594$).

Stools were collected once by each subject in sterile plastic containers and immediately frozen at -20°C for subsequent analyses.

PCR-temporal temperature gradient gel electrophoresis

Total DNA was extracted as described previously (Suau *et al.* 1999) from 0.25-g aliquots of homogenised faeces or 2.0-g aliquots of yogurt and four fermented milks widely consumed in France. The concentration and integrity of nucleic acids were determined visually by electrophoresis on agarose (10 g/l) gel containing ethidium bromide. Forward U968-GC (5'-CGC CCG GGG CGC GCC CCG GGC GGG GCG GGG GCA CCG GGG GAA CGC GAA GAA CCT TAC-3') and reverse T1401 (5'-GCG TGT GTA CAA GAC CC-3') primers were used to amplify the V6 to V8 regions of bacterial 16S

rDNA (Zoetendal *et al.* 1998). Primers Lac1 (5'-AGC AGT AGG GAA TCT TCC A-3') and Lac2GC (5'-CGC CCG CCG CGC GCG CGG GCG GGG GCG GGG GCG GGG CAC GGG GGG ATT YCA CCG CTA CAC ATG-3') were used for specific amplification of the 16S rDNA sequences of *Lactobacillus*, *Pediococcus*, *Leuconostoc* and *Weissella* genera, belonging to the *Lactobacillus* group (Walter *et al.* 2001). These two sets of primers produced 433 and 327 bp PCR amplicons, respectively. All primers were purchased from Qbiogene Research Services (Evry, France). For the first set of primers, the PCR conditions were as described previously (Seksik *et al.* 2003). For the Lac1 and Lac2GC primers, the hybridisation temperature was 61°C for 1 min. PCR products were analysed by electrophoresis on agarose (10 g/l) gel containing ethidium bromide to check their size (500 bp) and estimate their concentration. The DCode Universal Mutation Detection System (Bio-Rad, Paris, France) was used for the sequence-specific separation of PCR products, as previously described (Seksik *et al.* 2003). At the beginning of electrophoresis, for better resolution, the voltage was fixed at 20 V for 15 min. Then, for the first set of amplicons, electrophoresis was run for 16 h at 64 V with initial and final temperatures of 66 and 70°C , respectively (ramp rate 0.2°C per h). For amplicons obtained with primers Lac1 and Lac2GC, the initial and final temperatures were 63.8 and 70°C , respectively (ramp rate 0.4°C per h), at a voltage of 66 V. Each well was loaded with 100–200 ng amplified DNA plus an equal volume of gel loading dye (bromophenol blue (0.5 g/l)–xylene cyanol (0.5 g/l)–glycerol (700 g/l)). For each gel, three lanes were loaded with a marker obtained by mixing the PCR products of seven rDNA clones obtained from an adult male faecal sample (Suau *et al.* 1999). Clones were related to members of the *Clostridium coccoides* group, *Clostridium leptum* subgroup, *Bacteroides* group and *Bifidobacterium* genus. After the completion of electrophoresis, the gels were stained in the dark by immersion for 30 min in a solution of SYBR Green I Nucleic Acid Gel Stain (Roche Diagnostics, Meylan, France) and read on a Storm system (Molecular Dynamics, Amersham Biosciences, Orsay, France).

Fluorescent *in situ* hybridisation combined with flow cytometry

Whole cell FISH was performed as previously described (Rigottier-Gois *et al.* 2003) except that fixation was performed using frozen–thawed rather than fresh samples, within 1 month of collection (Rochet *et al.* 2004). The group-specific probes used are presented in Table 1. Data acquisition was performed using a Facs Calibur flow cytometer (Becton Dickinson, San Jose, CA, USA) equipped with an air-cooled Ar ion laser providing 15 mW at 488 nm combined with a 635 nm red diode laser (Rigottier-Gois *et al.* 2003). Subsequent analyses were conducted using CellQuest software (Becton Dickinson). Results were expressed as percentages of cells hybridising with the different group-specific probes relative to total bacteria hybridising with the EUB 338 probe, after the elimination of background fluorescence as determined using the NON 338 probe. Based on previous experience where faecal samples were added with serial dilutions of pure strains, the probes enabled the reliable detection of added target cells

Table 1. Probes used for the fluorescent *in situ* hybridisation analysis of intestinal microbiota*

Probes	OPD code	Target group	Sequence (5' → 3')	Reference
EUB 338	S-D-Bact-0338-a-A-18	Bacteria	GCTGCCTCCCGTAGGAGT	Amann <i>et al.</i> 1995
NON 338		Negative control	ACATCCTACGGGAGGC	Wallner <i>et al.</i> 1993
Erec 482	S*-Erec-0482-a-A-19	<i>Clostridium coccooides</i> – <i>Eubacterium rectale</i> group (<i>Clostridium</i> , <i>Eubacterium</i> , <i>Ruminococcus</i> , <i>Butyrivibrio</i>)	GCTTCTTAGTCARGTACCG	Franks <i>et al.</i> 1998
Clep 866	S*-Clep-0866-a-A-18	<i>Clostridium leptum</i> subgroup (<i>Ruminococcus</i> , <i>Eubacterium</i>)	GGTGATWACTTATTGTG	Lay <i>et al.</i> 2005
Bac 303	S*-Bac-0303-a-A-17	<i>Prevotella</i> and <i>Bacteroides</i>	CCAATGTGGGGACCTT	Manz <i>et al.</i> 1996
Lab 158	S-G-Lab-0158-a-A-20	<i>Lactobacillus</i> , <i>Enterococcus</i> , <i>Weissella</i> , <i>Pedococcus</i> , <i>Vagococcus</i> , <i>Leuconostoc</i> , <i>Oenococcus</i>	GGTATTAGCA(C/T)CTGTTTCCA	Harmsen <i>et al.</i> 1999
Bif 164	S-G-Bif-0164-a-A-18	<i>Bifidobacterium</i>	CATCCGGCATTACCAACC	Langendijk <i>et al.</i> 1995
Strc 493	S*-Strc-0493-a-A-19	<i>Streptococcus</i> and <i>Lactococcus</i>	GTTAGCCGTCCCTTTCTGG	Franks <i>et al.</i> 1998
Ato 291	S*-Ato-0291-a-A-17	<i>Atopobium</i> group	GGTCGGTCTCTCAACC	Harmsen <i>et al.</i> 2000
Enter 1432	S*-Ent-1432-a-A-15	Enteric group	CTTTGGCAACCCACT	V Chmielewski and P Pochart, unpublished results

*For details of procedures, see p. 127.
OPD, oligonucleotide probe database.

down to 0.5 % of the total. However, when values below 0.5 % were returned by the software, they were kept unchanged for the purposes of calculation.

Biochemical analyses

Enzyme activities were measured as previously described (Andrieux *et al.* 2002) using a thermo-regulated anaerobic chamber (H₂–CO₂–N₂ (10:10:80, by vol.)). Frozen–thawed faecal samples were diluted 1:20 using pre-reduced PBS (pH 6.7). α - and β -galactosidase, β -glucosidase, β -glucuronidase, N-acetyl-galactosaminidase and α -L-fucosidase activities were measured by determining the rate of *p*-nitrophenol release from *p*-nitrophenyl glycosides. Azoreductase activity was determined using amaranth as the substrate. Neuraminidase activity was measured using 4-methylumbelliferyl-*N*-acetylneuraminic acid as the substrate. Nitrate reductase was determined by the generation of nitrite. Enzyme activities were expressed as μ mol metabolised substrate per min and per g protein.

Protein concentrations were determined in triplicate using the method described by Lowry *et al.* (1951) with 1:500 faecal dilutions in Na₂CO₃ (20 g/l) and NaOH (0.1 M). Bovine serum albumin was used as the standard.

SCFA concentrations in faecal samples were analysed in duplicate after water extraction of acidified samples using GC (Perkin-Elmer 1020 GC; Perkin-Elmer, Saint Quentin, France) (Andrieux *et al.* 2002). NH₃ was determined using the Berthelot method adapted by Drosy & Boy (1961).

For bile acid analysis, the continuous extraction of 4-g aliquots of homogenised faeces was carried out for 48 h using boiling ethanol (100 ml) in a Soxhlet apparatus (Riottot *et al.* 1993). A 4-ml aliquot of the ethanol extract was hydrolysed by adding 1 ml 10 M-NaOH and heating the alkaline mixture to 120°C for 3 h under pressure. The hydrolysate was then cooled to room temperature, diluted with an equal volume of water (5 ml) and neutral sterols were extracted with 3 × 10 ml petroleum ether. The delipidated aqueous phase was then placed on ice, acidified to pH 2.0 with concentrated HCl and bile acids were extracted with 3 × 10 ml ethyl ether. The combined solvent fractions containing either neutral or acidic sterols were evaporated to dryness and the samples were reconstituted in 2 ml hexane or methanol, respectively, and analysed by GLC, taking 5 α -cholestane as the external standard.

Statistical analyses

PCR-temporal temperature gradient gel electrophoresis (TTGE) profiles were compared using GelCompar software (GelComparII™ version 3.5; Applied Maths, Sint-Martens-Latem, Belgium). Analysis included calculation of the number, position and intensity of PCR-TTGE bands (PCR-amplified 16S rDNA fragments) in the gel. Pearson correlation provided similarity based upon densitometric curves. Pearson similarity coefficients were calculated to generate a similarity matrix. The dendrogram was obtained from this matrix using the Unweighted Pair Group Method using Arithmetic averages algorithm. Cell proportions as estimated by FISH and biochemical data were analysed using the general linear model procedure and the MEAN and LSMEAN statements in SAS

Version 8.2 (SAS Institute, Cary, NC, USA) with one two-level factor for comparison between yogurt consumers and non-consumers. Results were expressed as means and their standard errors and were considered significant at $P \leq 0.05$. All data were examined for normal distributions and log-transformed when necessary prior to analysis. In this case, means were back-transformed for reporting as estimated means, and standard errors were estimated by assuming that standard errors on the logarithmic scale approximately equal CV on the actual scale. We employed Fisher's R -to- z transformation and the CORR procedure under SAS to test whether correlations between yogurt consumption and different variables were significantly different from zero.

Results

Composition of faecal microbiota

Fluorescent in situ hybridisation analysis. Using FISH adapted for detection by flow cytometry, eight phylogenetic groups were investigated in faecal samples from yogurt consumers (Y) and non-consumers (N) (Fig. 1). The only significant difference concerned Enterobacteriaceae, which were found at significantly lower levels in group Y (0.3 (SE 0.3) % v. 1.6 (SE 0.4) % in group N, $P=0.006$). They were below the threshold of detection (0.5 %) in twenty-six out of thirty yogurt consumers, and between 0.5 and 2.4 % in the remaining four. Among non-consumers, the levels of Enterobacteriaceae were below the detection threshold in twelve subjects while it ranged from 4.8 to 7.2 % in four subjects. Interestingly, within group Y, the proportion of bifidobacteria was positively correlated with fermented milk consumption (r 0.43, $P=0.018$). Overall, the cumulative proportions of cells hybridised with the eight group-specific probes among bacteria detected using the EUB 338 probe averaged 68.2 (SE 1.9) %, without any significant difference between groups Y and N.

PCR-temporal temperature gradient gel electrophoresis analysis. PCR-TTGE profiles obtained with general primers revealed the same broad inter-individual variability (Pearson similarity coefficient <80 %) in both groups of

subjects, without any significant differences between yogurt consumers and non-consumers. No band migrated at the same level as bands obtained from fermented milk (results not shown).

PCR-TTGE profiles generated with Lac1 and Lac2GC primers displayed no bands in three samples from group N, while one to six bands were observed in the forty-eight remaining samples from groups N and Y (Fig. 2). One band co-migrating with that obtained from *L. bulgaricus* DNA was observed in 73 % and 28 % of samples from groups Y and N, respectively ($P=0.003$). The PCR-TTGE profiles obtained with yogurt, three fermented milks and 'fromage blanc' revealed one band migrating at the same level (Fig. 3). Identity of *L. bulgaricus* was confirmed by sequencing the excised band from the gels of six yogurt consumers and from fermented milks. One band co-migrating with that obtained from *L. casei* DNA was obtained in four samples from group Y and one sample from group N; *L. bulgaricus* was found together with *L. casei* in these profiles and in the profile of the fermented milk Actimel® (Danone, France). One band was identified as *Leuconostoc mesenteroides* in the fermented milk Yorik® (Yoplait, France) and in three samples from groups Y and N. It is also interesting to note that TTGE analysis of fermented milks revealed a weaker band for the probiotic organism than for the starter organism.

Metabolic activities

Among the nine metabolic bacterial enzyme activities investigated, the only significant difference concerned β -galactosidase, which was found at significantly higher levels in group Y (Table 2). It was higher than 100 $\mu\text{mol}/\text{min}$ per g protein in five yogurt consumers and higher than 200 $\mu\text{mol}/\text{min}$ per g protein in two of them. Among non-consumers, this activity only reached 100 $\mu\text{mol}/\text{min}$ per g protein in one subject while it was inferior to 50 $\mu\text{mol}/\text{min}$ per g protein in five subjects. Moreover, in group Y, β -galactosidase activity was positively correlated with the daily consumption of yogurt (r 0.66, $P<0.0001$).

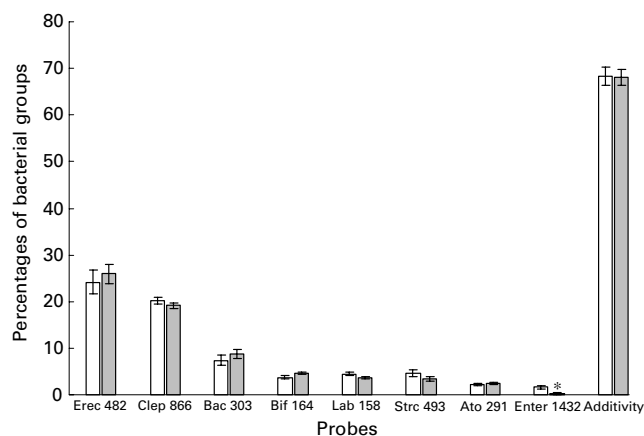


Fig. 1. Percentages of bacterial groups obtained by FISH analysis (see details in Table 1) in faecal samples from non-consumers (Group N, □) and consumers of yogurt (Group Y, ▒). Values are estimated means with their standard errors. *Indicates significant difference ($P=0.006$) between mean values.

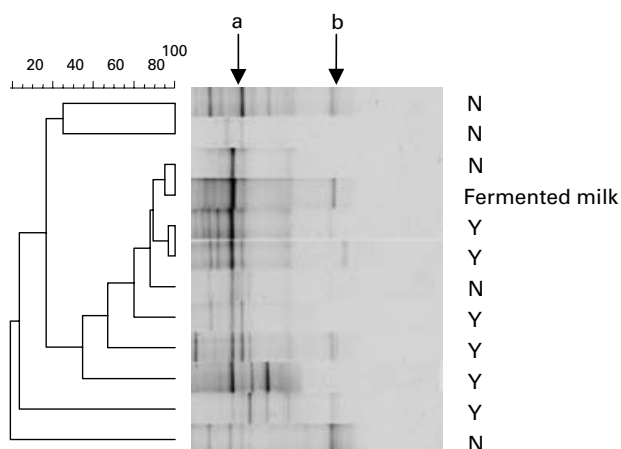


Fig. 2. PCR-TTGE profiles obtained with Lac1 and Lac2GC primers from faecal samples of non-consumers (N) and consumers (Y) of yogurt and from fermented milk containing yogurt starters and *L. casei* (Actimel®, Danone, France). Arrows show *L. delbrueckii* subsp. *bulgaricus* (a) and *L. casei* (b).

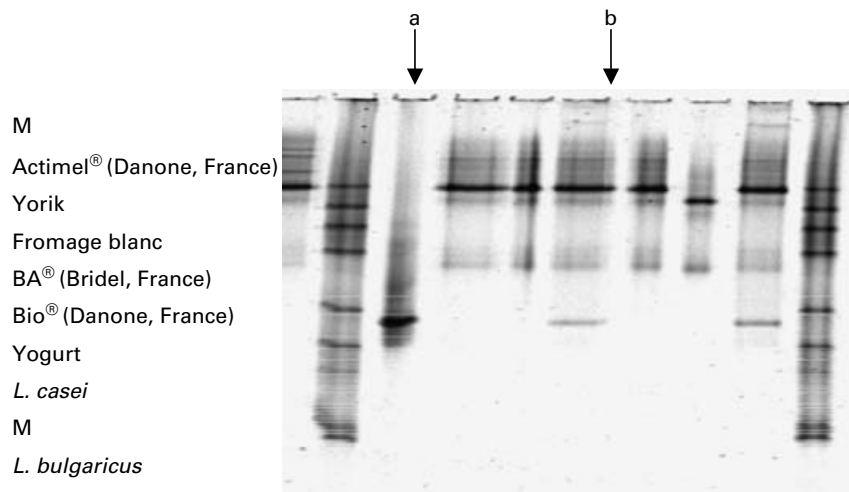


Fig. 3. PCR-TTGE profiles obtained with Lac 1 and Lac2GC primers from six dairy products, and from *L. delbrueckii* subsp. *bulgaricus* (a) and *L. casei* (b). M: marker obtained by mixing PCR products of seven rDNA clones (Suau *et al.* 1999).

The overall concentration of SCFA was about 100 $\mu\text{mol/g}$ fresh faeces in both groups of subjects ($P=0.151$) without any significant inter-group difference in composition (Table 3). However, in group Y, 67% of values were superior to 100 $\mu\text{mol/g}$ compared with 38% in group N. Moreover, the lowest values ($<40 \mu\text{mol/g}$) were all found in group N.

Cholic and chenodeoxycholic acids are the two primary bile acids (i.e. synthesised by the liver) in man and physiologically are poorly represented in stools. Their respective proportions were less than 5% (mass percentage of total faecal bile acids, non-significant difference) in both groups of subjects (Table 4). All other bile acids are secondary bile acids, i.e. bacterial metabolites of cholic and chenodeoxycholic acids. They did not differ significantly between groups, except for 7-keto-lithocholic acid, which was found at lower levels ($P=0.012$) in yogurt consumers (Table 4). Concomitantly, the proportion of ursodeoxycholic acid, which is the 7 β -OH epimer of chenodeoxycholic acid with 7-keto-lithocholic acid as the intermediate reaction product, tended to be lower ($P=0.078$) in yogurt consumers. But the overall proportion

of secondary bile acids did not significantly differ between groups (Table 4). Untransformed neutral sterols of animal and plant origin, i.e. cholesterol and β -sitosterol, each represented about 10% total neutral sterols in stools, without there being any significant difference between groups (Table 4). Nor were bacterial products of cholesterol (coprostanol, cholestanol and coprostanone) and β -sitosterol (copro- β -sitosterol) modified by yogurt consumption (Table 4).

Discussion

During the present study, molecular and biochemical approaches were used to assess the effects of fermented milk consumption when subjects were consuming self-chosen diets. The human volunteers were selected from participants in the SU.VI.MAX cohort (Herberg *et al.* 2004). They either consumed at least 200 g yogurt per d or no fermented milk products at all. Their food records did not include the brand of the foods consumed; we therefore compared the profiles of faecal bacteria from subjects with those of the commercial products generally consumed in the Paris area where the subjects lived.

Table 2. Bacterial enzyme activities ($\mu\text{mol/min per g protein}$) in faecal samples from non consumers (group N) or consumers (group Y) of yogurt*

(Mean values with their standard errors)

Enzymes	Group N (n 21)		Group Y (n 30)		P value
	Mean	SE	Mean	SE	
β -galactosidase	68.90	2.43	85.43	2.51	0.048
α -galactosidase	20.29	1.75	21.25	1.46	0.678
β -glucosidase	7.40	0.32	9.18	0.32	0.100
Neuraminidase	1.78	0.10	1.51	0.08	0.341
N-acetyl-galactosaminidase	3.08	0.18	3.28	0.16	0.716
α -L-fucosidase	2.08	0.11	2.30	0.10	0.521
β -glucuronidase	4.20	0.19	4.20	0.16	0.996
Nitrate reductase	0.10	0.02	0.17	0.02	0.253
Azoreductase	0.08	0.01	0.07	0.01	0.768

* For details of subjects and procedures, see pp. 127-128.

Table 3. Concentration of SCFA ($\mu\text{mol/g}$ fresh stools) in faecal samples from non-consumers (group N) or consumers (group Y) of yogurt*

(Mean values with their standard errors)

SCFA	Group N (n 21)		Group Y (n 30)		P value
	Mean	SE	Mean	SE	
Total	92.8	7.6	107.4	6.4	0.151
Acetate	61.6	1.6	60.7	1.3	0.667
Propionate	16.8	0.3	17.1	0.3	0.773
Butyrate	14.6	1.1	14.3	1.0	0.843
Iso-acids	4.2	0.5	5.0	0.4	0.210
Valerate + caproate	2.3	0.2	2.7	0.2	0.168

* For details of subjects and procedures, see pp. 127-128.

Table 4. Profiles of acidic and neutral sterols (mass percentages of total bile acids and neutral sterols) in faecal samples from non-consumers (Group N) and consumers (Group Y) of yogurt†

(Mean values with their standard errors)

Sterol	Group N (n 21)		Group Y (n 30)		P value
	Mean	SE	Mean	SE	
Acidic					
Cholic	4.23	0.44	2.97	0.26	0.269
Deoxycholic*	44.87	2.40	48.03	1.86	0.303
Ursocholic*	5.15	0.76	4.83	0.59	0.740
7-keto-deoxycholic*	0.43	0.17	0.12	0.13	0.169
Chenodeoxycholic	4.30	0.39	3.15	0.24	0.263
Lithocholic†	33.39	1.44	34.57	1.16	0.785
Ursodeoxycholic†	3.92	0.50	2.77	0.39	0.078
7-keto-lithocholic†	4.93	0.59	2.95	0.46	0.012
Sum of secondary‡	92.13	2.05	93.60	1.58	0.576
Neutral					
Cholesterol	13.15	1.89	9.40	1.47	0.128
Coprostanol§	26.05	1.21	26.82	0.96	0.830
Cholestanol§	1.17	0.26	1.07	0.20	0.756
Coprostanone§	1.37	0.41	2.16	0.32	0.140
β-sitosterol	9.63	1.76	7.33	1.36	0.310
Copro-β-sitosterol	49.12	2.93	52.93	2.27	0.313

* Bacterial metabolites of cholic acid.

† Bacterial metabolites of chenodeoxycholic acid.

‡ Deoxycholic + ursocholic + 7-keto-deoxycholic + lithocholic + ursodeoxycholic + 7-keto-lithocholic.

§ Bacterial metabolites of cholesterol.

|| Bacterial metabolite of β-sitosterol.

¶ For details of subjects and procedures, see pp. 127-128.

Using group-specific primers for *Lactobacillus* and related genera with sequencing confirmation, *L. delbrueckii* ssp. *bulgaricus* was identified in four out of five commercial fermented milks, including yogurt, and in 'fromage blanc', which was also widely consumed in group Y. Using the same group-specific primers (which normally detect *Lactobacillus* species present at a level of $>10^6$ colony-forming units/g wet faeces), *L. delbrueckii* ssp. *bulgaricus* was also identified in 73% of faecal samples from yogurt consumers but in only 28% of faecal samples from non-consumers. *L. casei* was also identified in three times more yogurt consumers than non-consumers. Conversely, using non-specific primers (which detect the 90–99% most numerous species in the community) did not allow us to highlight any faecal bacteria from fermented milk in any subjects. These results suggest that, in most yogurt consumers, *L. delbrueckii* ssp. *bulgaricus* was present at a level where biological effects could be expected (Marteau & Rambaud, 1993). This was also the case in a reduced proportion of non-consumers, all but one of whom were the highest consumers of cheese (but not of 'fromage blanc') within their group. Consumption of *L. bulgaricus*-containing cheeses, such as Swiss (Emmental, Gruyère) or Mediterranean (Feta, Mozzarella, Provolone, etc.), could therefore explain the occurrence of this micro-organism in group N. But it should be emphasised that the current results do not provide information on the survival of this micro-organism in faeces and *a fortiori* during transit in the gastrointestinal tract, since PCR-amplified DNA detection does not distinguish between live, injured and dead cells. Other studies have provided evidence that *L. delbrueckii* ssp. *bulgaricus* and *L. casei*, known

to exhibit poor survival when challenged *in vitro* by gastric acidity and bile salts, partly survive transit through the gastrointestinal tract of human volunteers (Pochart *et al.* 1989; Bouhnik, 1993; Yuki *et al.* 1999; Callegari *et al.* 2004; Mater *et al.* 2005) and Göttingen minipigs (Lick *et al.* 2001) ingesting yogurt. Furthermore, there is recent evidence that *L. casei* initiates protein synthesis during its transit in the digestive tract of mice harbouring human intestinal microbiota (Oozeer *et al.* 2002, 2005) and that some protective effects of probiotics, such as immuno-stimulation, are mediated by their own DNA rather than by their ability to survive through the gastrointestinal tract (Rachmilewitz *et al.* 2004).

FISH analysis of the predominant bacterial groups in faeces showed that Enterobacteriaceae, which include pathogenic bacteria, were significantly less represented in yogurt consumers. Otherwise, chronic consumption of yogurt did not significantly alter other bacterial groups. But interestingly, within group Y, values obtained for the *Bifidobacterium* genus, which is recognised for its potential health-promoting capacities (Gibson *et al.* 1995), was positively correlated with fermented milk consumption. Taken altogether, these novel results suggest that a regular consumption of yogurt in a self-chosen diet could induce modifications in the indigenous microbiota.

During the present study, β-galactosidase activity in faeces was found to be significantly increased in yogurt consumers and to exhibit a positive correlation with the amount of yogurt consumed within this group. In yogurt, *S. salivarius* ssp. *thermophilus* contains a β-galactosidase, which is active in the digestive tract of germ-free mice (Drouault *et al.* 2002), while *L. delbrueckii* ssp. *bulgaricus* does not (Pochart *et al.* 1989). This suggests that *S. salivarius* ssp. *thermophilus* may survive intestinal transit, even though overall levels of the streptococcus group did not significantly differ between subject groups. Other intestinal bacteria may also participate in lactose fermentation (He *et al.* 2005), e.g. bifidobacteria, the proportion of which presented a positive correlation with the amount of fermented milk consumed in group Y. Otherwise, chronic consumption of yogurt did not significantly alter other enzyme activities. This is in contrast with the reports of authors who have found that some probiotics, mainly lactobacilli or bifidobacteria, may improve bacterial metabolism by decreasing potentially harmful enzymes such as β-glucuronidase, reductases and 7α-dehydroxylase (Rowland, 1992; Roos & Katan, 2000). Because the SU.VI.MAX questionnaire did not allow a distinction between subjects who consumed traditional yogurts (fermented with *S. thermophilus* and *L. delbrueckii* ssp. *bulgaricus* starter cultures) and those who consumed yogurts enriched with other probiotic bacteria, it cannot be excluded that the differences between groups were only small because the study participants mainly consumed traditional yogurts.

Sterol metabolism was weakly affected by yogurt consumption, as inferred from the respective proportions of the different molecular species of neutral and acidic sterols in the stools of yogurt consumers and non-consumers. It has been argued that the bile salt hydrolase activity of ingested bacteria, such as lactobacilli and bifidobacteria, might favour the early deconjugation of bile acids in the small intestine and their subsequent biotransformation by the resident microbiota, leading to the increased formation of cytotoxic secondary bile acids

(Marteau *et al.* 1995). This was not observed in the present study, where the overall percentages of secondary bile acids and of the main secondary lithocholic and deoxycholic acids, which are known to be the most cytotoxic, were not increased in yogurt consumers. The only difference concerned the minor secondary 7-keto-lithocholic acid, and to a lesser extent ursodeoxycholic acid, which were or tended to be decreased in yogurt consumers. This suggests that 7 β -epimerisation of chenodeoxycholic to ursodeoxycholic acid, via 7-keto-lithocholic acid as the intermediate product (Lepercq *et al.* 2004) could be decreased by long-term yogurt consumption. It is impossible to speculate as to the mechanisms involved or any impact on health.

In conclusion, the present work demonstrated the presence of food-borne bacteria in faeces from healthy volunteers who regularly included yogurt in their everyday diet in an industrialised country. It also suggests that the consumption of yogurt may ensure some advantageous changes to the equilibrium and metabolic activities of the indigenous microbiota.

Acknowledgements

We are grateful to C. Girard for her technical assistance, to O. David for statistical advice, to Dr. G. Corthier, Dr P. Langella and Dr. S. Rabot for helpful suggestions regarding the manuscript and to V. Hawken for her advice on English translation.

References

- Alander M, Satokari R, Korpela R, Saxelin M, Vilpponen-Samena T, Mattila-Sandholm T & von Wright A (1999) Persistence of colonization of human colonic mucosa by a probiotic strain, *Lactobacillus rhamnosus* GG, after oral consumption. *Appl Environ Microbiol* **65**, 351–354.
- Amann RI, Ludwig W & Schleifer KH (1995) Phylogenetic identification and *in situ* detection of individual microbial cells without cultivation. *Microbiol Rev* **59**, 143–169.
- Andrieux C, Membre JM, Cayuela C & Antoine JM (2002) Metabolic characteristics of the fecal microflora in humans from three age groups. *Scand J Gastroenterol* **7**, 792–798.
- Blaut M, Collins MD, Welling GW, Dore J, Van Loo J & De Vos W (2002) Molecular biological methods for studying the gut microbiota: the E.U. human gut flora project. *Brit J Nut* **87**, S203–S211.
- Bouhnik Y (1993) Survie et effets chez l'homme des bactéries ingérées dans les laits fermentés [Survival and effects of bacteria ingested via fermented milks in humans]. *Lait* **73**, 241–247.
- Callegari ML, Morelli L, Ferrari SL, Cobo Sanz JM & Antoine JM (2004) Yogurt symbiosis survived in human gut after ingestion. *FASEB J* **18**, (Abstr 115.8).
- Drosy G & Boy J (1961) Détermination de l'ammoniémie (méthode automatique par dialyse) [Determination of ammonemia (automatic method using dialysis)]. *Ann Biol Clin-Paris* **19**, 313–317.
- Drouault S, Anba J & Corthier G (2002) *Streptococcus thermophilus* is able to produce a β -galactosidase active during its transit in the digestive tract of germ-free mice. *Appl Environ Microbiol* **68**, 938–941.
- Franks AH, Harmsen HJM, Raangs GC, Jansen GJ, Schut F & Welling G (1998) Variations of bacterial populations in human feces measured by fluorescent *in situ* hybridisation with group specific 16S-rRNA-targeted oligonucleotide probes. *Appl Environ Microbiol* **64**, 3336–3345.
- Gibson GR, Beatty ER, Wang X & Cummings JH (1995) Selective stimulation of bifidobacteria in the human colon by oligofructose and inulin. *Gastroenterology* **108**, 975–982.
- Goldin BR (1986) The metabolism of the intestinal microflora and its relationship to dietary fat, colon, and breast cancer. *Prog Clin Biol Res* **222**, 655–685.
- Gorbach SL (1986) Function of the human normal microflora. *Scand J Infect Dis* **49**, 17–30.
- Guarner F, Perdigon G, Corthier G, Salminen S, Koletzko B & Morelli L (2005) Should yoghurt cultures be considered probiotic? *Br J Nutr* **93**, 783–786.
- Guerin-Danan C, Chabanet C, Pedone C, Popot F, Vaissade P, Bouley C, Szylit O & Andrieux C (1998) Milk fermented with yogurt cultures and *Lactobacillus casei* compared with yogurt and gelled milk: influence on intestinal microflora in healthy infants. *Am J Clin Nutr* **67**, 111–117.
- Harmsen HJM, Elfferich P, Schut F & Welling GW (1999) A 16S rRNA-targeted probe for detection of Lactobacilli and Enterococci in faecal samples by fluorescent *in situ* hybridization. *Microbiol Ecol Health Dis* **11**, 3–12.
- Harmsen HJM, Wildeboer-Veloo ACM, Grijpstra J, Knol J, Degener JE & Welling GW (2000) Development of 16S rRNA-based probes for the *Coriobacterium* group and the *Atopobium* cluster and their application for enumeration of *Coriobacteriaceae* in human feces from volunteers of different age groups. *Appl Environ Microbiol* **66**, 4523–4527.
- He T, Priebe MG, Vonk RJ & Welling GW (2005) Identification of bacteria with β -galactosidase activity in faeces from lactase non-persistent subjects. *FEMS Microbiol Ecol* **54**, 463–469.
- Hercberg S, Galan P, Preziosi P, Bertrais S, Mennen L, Malvy D, Roussel AM, Favier A & Briancon S (2004) The SU.VI.MAX study: a randomised, placebo-controlled trial of the health effects of antioxidant vitamins and minerals. *Arch Intern Med* **164**, 2335–2342.
- Hercberg S, Preziosi P, Briancon S, Galan P, Triol I, Malvy D, Roussel AM & Favier A (1998) A primary prevention trial using nutritional doses of antioxidant vitamins and minerals in cardiovascular diseases and cancers in a general population: the SU.VI.MAX study—Design, methods, and participant characteristics. *Control Clin Trials* **19**, 336–351.
- Langendijk PS, Schut F, Janssen GJ, Raangs GC, Kamphuis GR, Wilkinson MH & Welling GW (1995) Quantitative fluorescence *in situ* hybridisation of *Bifidobacterium* spp. with genus-specific 16S rRNA-targeted probes and its application in fecal samples. *Appl Environ Microbiol* **61**, 3069–3075.
- Lay C, Sutren M, Rochet V, Saunier K, Dore J & Rigottier-Gois L (2005) Design and validation of 16S rRNA probes to enumerate members of the *Clostridium leptum* subgroup in human faecal microbiota. *Environ Microbiol* **7**, 933–946.
- Lepercq P, Gérard P, Béguet F, Grill JP, Relano P, Cayuela C & Juste C (2004) Isolates from normal human intestinal flora but not lactic acid bacteria exhibit 7 α - and 7 β -hydroxysteroid dehydrogenase activities. *Microbiol Ecol Health Dis* **16**, 195–201.
- Lick S, Drescher K & Heller KJ (2001) Survival of *Lactobacillus delbrueckii* subsp. *bulgaricus* and *Streptococcus thermophilus* in the terminal ileum of fistulated Göttingen minipigs. *Appl Environ Microbiol* **67**, 4137–4143.
- Lowry OH, Rosebrough NJ, Farr AL & Randall RJ (1951) Protein measurement with the Folin phenol reagent. *J Biol Chem* **193**, 265–275.
- Macfarlane GT & Cummings JH (1991) The colonic flora, fermentation and large bowel digestive function. In *The Large Intestine: Physiology, Pathophysiology and Disease*, pp. 51–92 [SF Phillips, JH Pemberton and RG Shorter, editors]. New York: Raven Press.
- Manz W, Amann R, Ludwig W, Vancanneyt M & Schleifer KH (1996) Application of a suite of 16S rRNA-specific oligonucleotide

- probes designed to investigate bacteria of the phylum cytophaga-flavobacter-bacteroides in the natural environment. *Microbiology* **142**, 1097–1106.
- Marteau P, Flourie B, Pochart P, Chastang C, Desjeux JF & Rambaud JC (1990) Effect of the microbial lactase (EC 3.2.1.23) activity in yogurt on the intestinal absorption of lactose: an *in vivo* study in lactase deficient humans. *Br J Nutr* **64**, 71–79.
- Marteau P & Rambaud JC (1993) Potential of using lactic acid bacteria for therapy and immunomodulation in man. *FEMS Microb Rev* **12**, 207–220.
- Marteau P, Gerhart MF, Myara A, Bouvier E, Trivin F & Rambaud JC (1995) Metabolism of bile salts by alimentary bacteria during transit in the human small intestine. *Microbial Ecol Health Dis* **8**, 151–157.
- Mater DDG, Bretigny L, Firmesse O, Flores MJ, Mogenet A, Bresson JL & Corthier G (2005) *Streptococcus thermophilus* and *Lactobacillus delbrueckii* subsp. *bulgaricus* survive gastrointestinal transit of healthy volunteers consuming yogurt. *FEMS Microbiol Lett* **250**, 185–187.
- Oozeer R, Furet JP, Goupil-Feuillerat N, Anba J, Mengaud J & Corthier G (2005) Differential activities of four *Lactobacillus casei* promoters during bacterial transit through the gastrointestinal tracts of human-microbiota-associated mice. *Appl Environ Microbiol* **71**, 1356–1363.
- Oozeer R, Goupil-Feuillerat N, Alpert CA, van de Guchte M, Anba J, Mengaud J & Corthier G (2002) *Lactobacillus casei* is able to survive and initiate protein synthesis during its transit in the digestive tract of human flora-associated mice. *Appl Environ Microbiol* **68**, 3570–3574.
- Pochart P, Dewit O, Desjeux JF & Bourlioux P (1989) Viable starter culture, 13-galactosidase activity and lactose in duodenum after yogurt ingestion in lactase deficient humans. *Am J Clin Nutr* **49**, 828–831.
- Rachmilewitz D, Katakura K, Karmeli F, *et al.* (2004) Toll-like receptor 9 signaling mediates the anti-inflammatory effects of probiotics in murine experimental colitis. *Gastroenterology* **126**, 520–528.
- Rigottier-Gois L, Le Bourhis A-G, Gramet G, Rochet V & Dore J (2003) Fluorescent hybridisation combined with flow cytometry and hybridisation of total RNA to analyse the composition of microbial communities in human faeces using 16S rRNA probes. *FEMS Microbiol Ecol* **43**, 237–245.
- Riottot M, Olivier P, Huet A, Caboche JJ, Parquet M, Khallou J & Lutton C (1993) Hypolipidemic effects of beta-cyclodextrin in the hamster and in the genetically hypercholesterolemic Rico rat. *Lipids* **28**, 181–188.
- Rochet V, Rigottier-Gois L, Rabot S & Dore J (2004) Validation of fluorescent *in situ* hybridization combined with flow cytometry for assessing interindividual variation in the composition of human fecal microflora during long-term storage of samples. *J Microbiol Methods* **59**, 263–270.
- Rochet V, Rigottier-Gois L, Sutren M, *et al.* (2006) Effects of orally administered *Lactobacillus casei* DN-114 001 on the composition or activities of the dominant faecal microbiota in healthy humans. *Br J Nutr* **95**, 421–429.
- Roos NM & Katan MB (2000) Effect of probiotic bacteria on diarrhea, lipid metabolism and carcinogenesis: a review of papers published between 1988 and 1998. *Am J Clin Nutr* **71**, 405–411.
- Rowland IR (1992) Metabolic interactions in the gut. In *Probiotics*, pp. 29–53 [R Fuller, editor]. London: Chapman & Hall.
- Sanders ME (1993) Summary of conclusions from a panel of experts on health attribute of lactic cultures: significance of fluid milk products containing cultures. *J Dairy Sci* **76**, 1819–1828.
- Seksik P, Rigottier-Gois L, Gramet G, Sutren M, Pochart P, Marteau P, Jian R & Dore J (2003) Alterations of the dominant faecal bacterial groups in patients with Crohn's disease of the colon. *Gut* **52**, 237–242.
- Shortt C (1999) The probiotic century: historical and current perspectives. *Trends Food Sci Tech* **10**, 411–417.
- Suau A, Bonnet R, Sutren M, Godon JJ, Gibson GR, Collins MD & Dore J (1999) Direct analysis of genes encoding 16S RNA from complex communities reveals many novel molecular species within the human gut. *Appl Environ Microbiol* **65**, 4799–4807.
- Tannock GW, Munro K, Harmsen HJM, Welling GW, Smart J & Gopal PK (2000) Analysis of the fecal microflora of human subjects consuming a probiotic product containing *Lactobacillus rhamnosus* DR 20. *Appl Environ Microbiol* **66**, 2578–2588.
- Teitelbaum JE & Walker WA (2002) Nutritional impact of pre- and probiotics as protective gastrointestinal organisms. *Annu Rev Nutr* **22**, 107–138.
- Wallner G, Amann R & Beisker W (1993) Optimizing fluorescent *in situ* hybridisation with rRNA-targeted oligonucleotide probes for flow cytometric identification of micro-organisms. *Cytometry* **14**, 136–143.
- Walter J, Hertel C, Tannock GW, Lis CM, Munro K & Hammes WP (2001) Detection of *Lactobacillus*, *Pediococcus*, *Leuconostoc* and *Weissella* species in human feces by using group specific PCR primers and denaturing gradient gel electrophoresis. *Appl Environ Microb* **67**, 2578–2585.
- Yuki N, Watanabe K, Mike A, Tagami Y, Tanaka R, Ohwaki M & Morotomi M (1999) Survival of a probiotic, *Lactobacillus casei* strain Shirota, in the gastrointestinal tract: selective isolation from faeces and identification using monoclonal antibodies. *Int J Food Microbiol* **48**, 51–57.
- Zoetendal EG, Akkermans AD & De Vos WM (1998) Temperature gradient gel electrophoresis analysis of 16S rRNA from human fecal samples reveals stable and host-specific communities of active bacteria. *Appl Environ Microbiol* **64**, 3854–3859.