



THE BRITISH JOURNAL OF PSYCHIATRY

September 1991

Vol. 159

Annotation

D₁ and D₂ and D₃. *D. Healy*

Papers

A controlled study of the effect of therapies aimed at adolescent and family psychopathology in anorexia nervosa. *A. H. Crisp, K. Norton, S. Gowers, C. Halek, C. Bowyer, D. Yeldham, G. Levett and A. Bhat*

Community care: does it reduce the need for psychiatric beds? A comparison of two different styles of service in three hospitals. *R. E. Lawrence, J. B. Copas and P. W. Cooper*

Lithium in tricyclic-resistant depression. Correlation of increased brain 5-HT function with clinical outcome. *P. J. Cowen, S. L. McCance, C. J. Ware, P. R. Cohen, J. S. Chalmers and D. L. Julier*

Psychiatric illnesses in patients with HIV infection and AIDS referred to the liaison psychiatrist. *R. Seth, K. Granville-Grossman, D. Goldmeier and S. Lynch*

The World Health Organization's cross-cultural study on neuropsychiatric aspects of infection with the human immunodeficiency virus 1 (HIV-1). Preparation and pilot phase. *M. Maj, R. Janssen, P. Satz, M. Zaudig, F. Starace, D. Boor, B. Sughondhabirrom, E. G. Bing, M.-K. Luabeya, D. Ndetei, R. Riedel, G. Schulte and N. Sartorius*

319 Systemic family therapy in adult psychiatry. A review of 50 families. *S. Bloch, M. Sharpe and P. Allman* 357

Group therapeutic factors on an alcohol inpatient unit. *L. Lovett and J. Lovett* 365

Age, transvestism, bondage, and concurrent paraphilic activities in 17 fatal cases of autoerotic asphyxia. *R. Blanchard and S. J. Hucker* 371

325 The structure of phobias in panic disorder. *N. Argyle, C. Solyom and L. Solyom* 378

334 Long-term outcome in early-onset anorexia nervosa. *G. Walford and N. McCune* 383

Comparison of imaginal desensitisation with other behavioural treatments of pathological gambling. A two- to nine-year follow-up. *N. McConaghy, A. Blaszczynski and A. Frankova* 390

341 A comparison of paroxetine, imipramine and placebo in depressed out-patients. *G. C. Dunbar, J. B. Cohn, L. F. Fabre, J. P. Feighner, R. R. Fieve, J. Mendels and R. K. Shrivastava* 394

347 The psychological consequences of tardive dyskinesia. The effect of drug-induced parkinsonism and the topography of the dyskinetic movements. *K. W. Brown and T. White* 399

Continued inside

150 Years of **PSYCHIATRIC CLINIC** 1841-1991
NEW YORK HOSPITAL

Published by The Royal College of Psychiatrists

Not to be taken
from Library

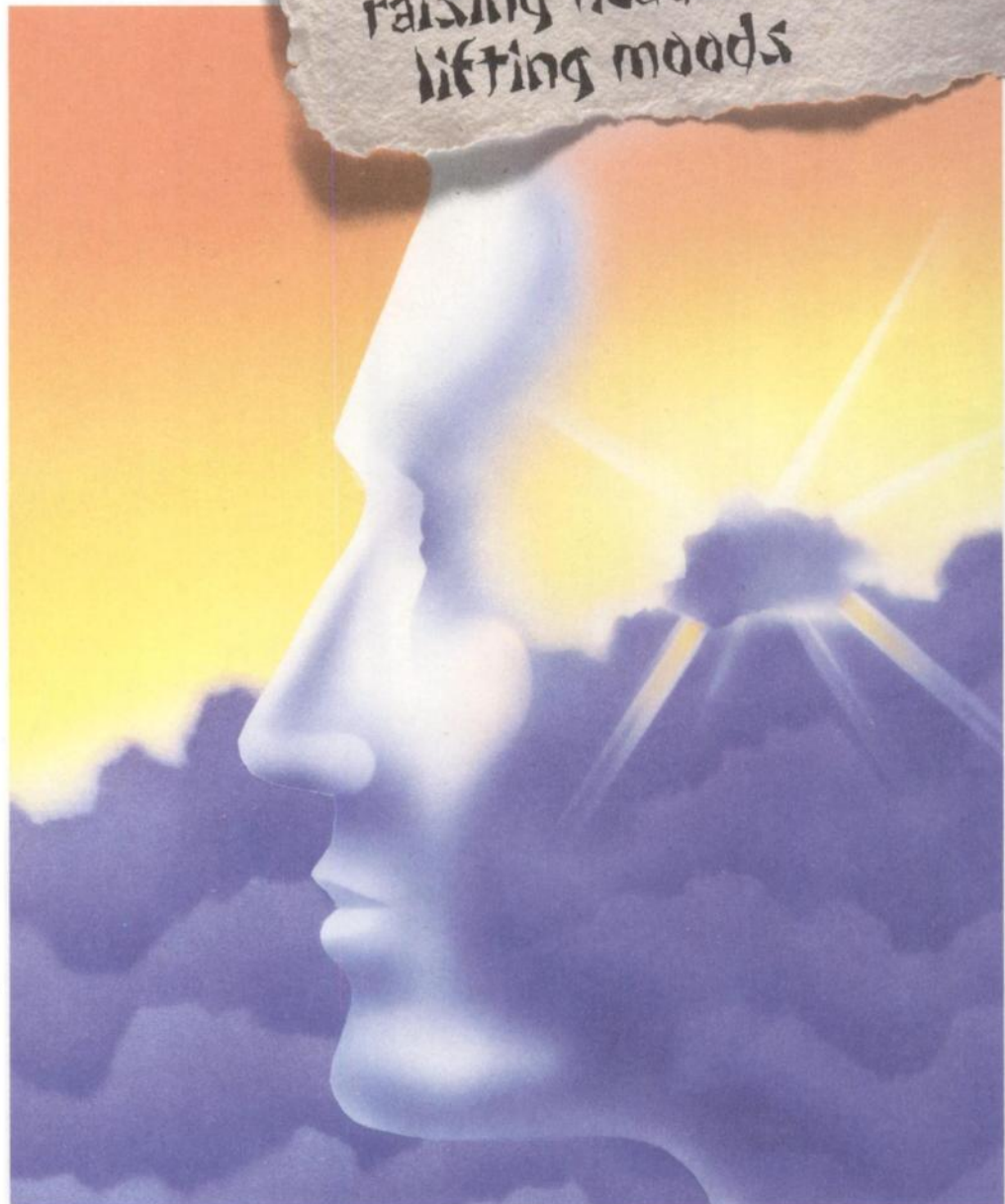
SEP 30 1991

ISSN 0007-1250

Skies surrender to
an upward glance
raising heads
lifting moods

75 YEARS

OF CARE
Lundbeck
FACING
THE
FUTURE
TOGETHER



DEPOT
DEPIXOL[®]
cis(Z)-flupenthixol decanoate

For the withdrawn schizophrenic

Further information is available on request from: Lundbeck Ltd, Lundbeck House, Hastings Street, Luton, Beds LU1 5BE

The British Journal of Psychiatry

September 1991, Volume 159

Published monthly. Founded in 1853 as the *Asylum Journal* and known as the *Journal of Mental Science* from 1858 to 1963

Editor: Hugh Freeman

Senior Associate Editor

Alan Kerr

Associate Editors

Dora Black, Sidney Crown,
Julian Leff, Sir Martin Roth,
Peter Tyrer

Assistant Editors

Mohammed Abou-Saleh, German Berrios,
Peter Bruggen, Patricia Casey, Alexander
Kellam, Stuart Montgomery, Catherine
Oppenheimer, Ian Pullen, Rosalind
Ramsay, Henry Rollin, Oliver Russell,
George Stein, Digby Tantam,
Greg Wilkinson, Stephen Wilson

Publications Manager

Dave Jago

Scientific Editor

Ralph Footring

Bulletin Manager

Elaine Millen

Assistant Scientific Editor

Katharine Blanford

Editorial Assistants

Judy Ashworth, Christina Connolly

US Mailing Agents: Mercury Airfreight International Ltd. Inc.,
2323 Randolph Avenue, Avenel, NJ 07001. Second class postage
paid at Rahway, NJ.

Back issues published before 1988 may be purchased from William
Dawson & Sons Ltd, Cannon House, Folkestone, Kent, England
(tel. 0303-850-101).

©™ The paper used in this publication meets the minimum
requirements of American National Standard for Information
Sciences—Permanence of Paper for Printed Library Materials.
ANSI Z39. 48-1984.

Printed by Henry Ling Ltd, The Dorset Press,
23 High East Street, Dorchester, Dorset DT1 1HD

©1991 The Royal College of Psychiatrists

Contents continued from front cover

- A scale for evaluating emotional disorders in severely and profoundly mentally retarded persons. Development of the diagnostic assessment for the severely handicapped (DASH) scale. *J. L. Matson, W. I. Gardner, D. A. Coe and R. Sovner* 404
- P300 and reaction-time measures in senile dementia of the Alzheimer type. *P. A. Williams, G. H. Jones, M. Briscoe, R. Thomas and P. Cronin* 410
- Contextual effects on choice reaction time and accuracy in acute and chronic schizophrenics. Impairment in selective attention or in the influence of prior learning? *S. H. Jones, D. R. Hemsley and J. A. Gray* 415
- ### Brief Reports
- Behavioural treatment of AIDS-focused illness phobia. *S. Logsdail, K. Lovell, H. Warwick and I. Marks* 422
- Classification of dissociative states in DSM-III-R and ICD-10 (1989 Draft). A study of Indian out-patients. *P. S. Das and S. Saxena* 425
- Monosymptomatic hypochondriacal psychosis in developing countries. *A. A. Osman* 428
- Post-traumatic stress disorder and severe head injury. *T. M. McMillan* 431
- Serotonin reuptake inhibitors, epilepsy and myoclonus. *M. Deahl and M. Trimble* 433
- Head circumference in elderly long-stay patients with schizophrenia. *G. H. Jones and J. E. Lewis* 435

The *British Journal of Psychiatry* is published monthly under the auspices of the Royal College of Psychiatrists. The *Journal* publishes original work in all fields of psychiatry. All communications, including manuscripts for publication, should be sent to The Editor, *British Journal of Psychiatry*, 17 Belgrave Square, London SW1X 8PG.

Full instructions to authors are given on the following two pages in this issue.

The *British Journal of Psychiatry* is published monthly under the auspices of the Royal College of Psychiatrists. The *Journal* publishes original work in all fields of psychiatry. All communications, including manuscripts for publication, should be sent to The Editor, *British Journal of Psychiatry*, 17 Belgrave Square, London SW1X 8PG.

Instructions to Authors

The *British Journal of Psychiatry* is published monthly by the Royal College of Psychiatrists. The *Journal* publishes original work in all fields of psychiatry. All communications, including manuscripts for publication, should be sent to The Editor, The British Journal of Psychiatry, 17 Belgrave Square, London SW1X 8PG.

Contributions are accepted for publication on the condition that their substance has not been published or submitted for publication elsewhere. The *Journal* does not hold itself responsible for statements made by contributors. Unless so stated, material in the *Journal* does not necessarily reflect the views of the Editor or the Royal College of Psychiatrists.

Published articles become the property of the *Journal* and can be published elsewhere, in full or in part, only with the Editor's written permission.

Manuscripts accepted for publication are subject to copy-editing to improve readability to make the editorial changes required for conformity with *Journal* style.

We regret that manuscripts unsuitable for publication will not be returned.

Manuscripts

Two high-quality copies should be submitted and authors should keep one copy for reference. Articles must be typed on A4, on one side of the paper only, double-spaced throughout (including tables and references) and with wide margins (at least 4 cm); all the pages, including the title page, must be numbered.

Title and authors

The title should be brief and relevant. If necessary, a subtitle may be used to amplify the main title. The names of the authors should appear on the title page, in the form that is wished for publication, and the names, degrees, affiliations and full addresses at the time the work described in the paper was carried out given at the end of the paper. One of the authors should be designated to receive correspondence and proofs, and the appropriate address indicated.

More than five authors may be credited to a paper only at the Editor's discretion.

Summaries

A summary should be given at the beginning of the article. This should rarely be more than 150 words long

and should describe the reason for the investigation, its findings and implications. Avoid describing the contents of the paper, rather than the research, with phrases such as 'is described' and 'are discussed'. Note that comments, annotations, lectures and points of view do not necessarily require summaries, although review articles do.

References

References should be listed alphabetically at the end of the paper, the titles of journals being given in full. Titles of books and journals are printed in *italic* and should therefore be underlined on the typescript. Reference lists not in *Journal* style will be returned to the author for correction.

Authors should check that the text references and list are in complete agreement as regards dates and spelling of names. The text reference should be in the form '(Smith, 1971)' or 'Smith (1971) showed that. . .'. The reference list should follow the style example below:

- ALDERSON, M. R. (1974) Self poisoning: what is the future? *Lancet*, *i*, 104–113.
- AMERICAN PSYCHIATRIC ASSOCIATION (1980) *Diagnostic and Statistical Manual of Mental Disorders* (3rd edn) (DSM-III). Washington, DC: APA.
- AYLARD, P. R., GOODING, J. H., MCKENNA, P. S., *et al* (1987) A validation study of three anxiety and depression self assessment scales. *Psychosomatic Research*, *1*, 261–268.
- DE ROUGEMONT, D. (1950) *Passion and Society* (trans. M. Belgium). London: Faber and Faber.
- FISHER, M. (1990) *Personal Love*. London: Duckworth.
- FLYNN, C. H. (1987) Defoe's idea of conduct: ideological fictions and fictional reality. In *Ideology of Conduct* (eds N. Armstrong & L. Tenenhouse), pp. 73–95. London: Methuen.
- FREUD, S. (1955) Some neurotic mechanisms in jealousy, paranoia and homosexuality. In *Standard Edition, Vol. 18* (ed. & trans. J. Strachey), pp. 221–232. London: Hogarth Press.
- JONES, E. (1937) Jealousy. In *Papers on Psychoanalysis*, pp. 469–485. London: Bailliere, Tindall.
- MULLEN, P. E. (1990a) Morbid jealousy and the delusion of infidelity. In *Principles and Practice of Forensic Psychiatry* (eds R. Bluglass & P. Bowden), pp. 823–834. London: Churchill Livingstone.
- (1990b) A phenomenology of jealousy. *Australian and New Zealand Journal of Psychiatry*, *24*, 17–28.
- VAUKHONEN, K. (1968) On the pathogenesis of morbid jealousy. *Acta Psychiatrica Scandinavica* (suppl. 202).

Personal communications need written authorisation; they should not be included in the reference list, only mentioned in the text. No other citation of unpublished work, including unpublished conference presentations, is permissible.