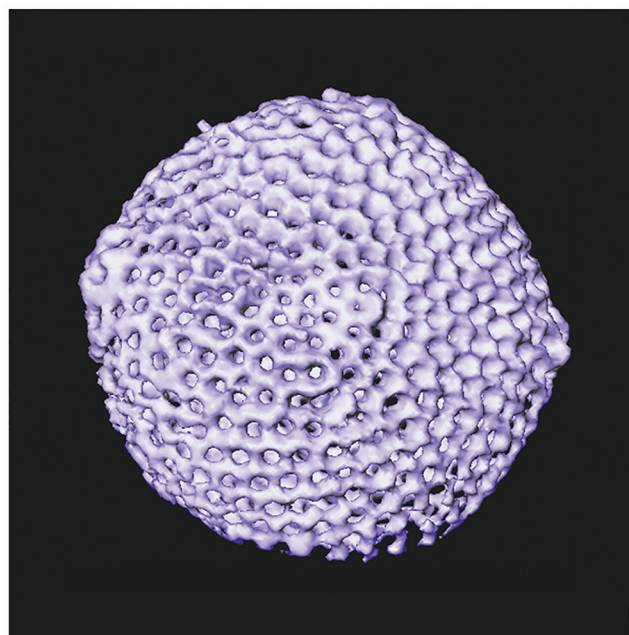
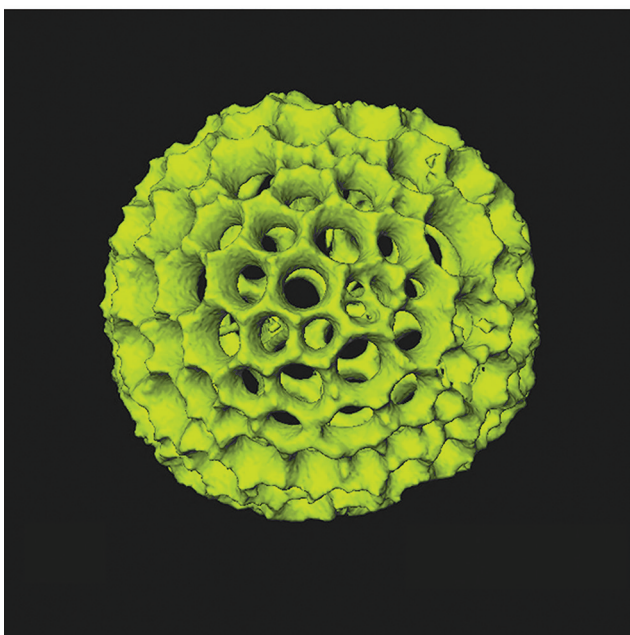
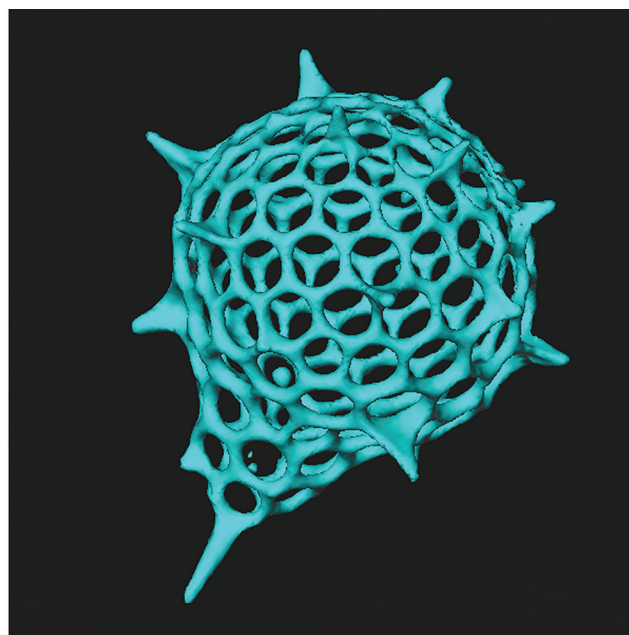
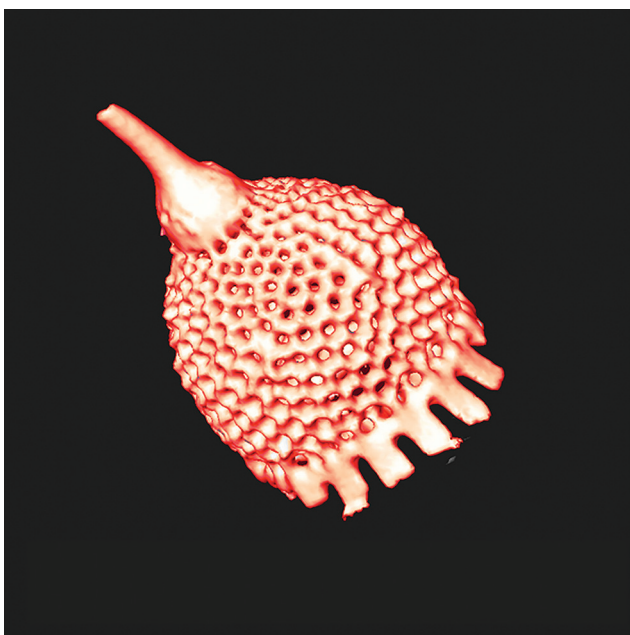


# Microscopy TODAY

Volume 23 Number 5 2015 September

0950-1017/15/15151929\$15.00/0668. Published online by Cambridge University Press





# Expand Your Boundaries

Discover the Nano-World with the Hitachi AFM5300E

## Vacuum System

- High-resolution observation of electromagnetic properties
- High temperature and cryogenic measurements

## In-situ Observation

- In air or in solution
- Humidity control
- Temperature control

## Air Protection

- SEM and ion milling compatible sample holder

Environmental-Control Atomic Force Microscope

# AFM5300E



*Inspire Innovation through Collaboration*



# Expand your Knowledge of Microscopy with MSA Membership!

Whether your primary focus is in light, electron, or scanning probe microscopy, or the biological or the physical sciences, MSA takes your knowledge to the next level!

## Members Receive:

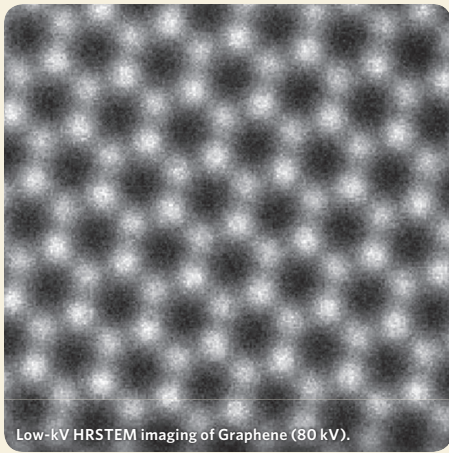
- A personal subscription to MSA's official journal, *Microscopy and Microanalysis*, and MSA's popular bi-monthly magazine, *Microscopy Today*.
- Peer Networking through the Society's Focused Interest Groups and Local Affiliated Societies.
- Discounts on books, journals and other educational materials.
- MSA Awards Programs, Scholarships, Speaker Opportunities, and more!



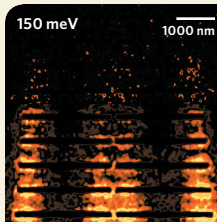
**Join MSA Today!**

Visit: [www.microscopy.org](http://www.microscopy.org) or call 1-800-538-3672

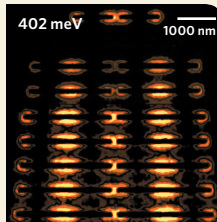




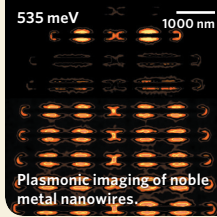
Low-kV HRSTEM imaging of Graphene (80 kV).



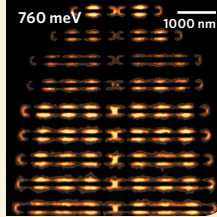
150 meV 1000 nm



402 meV 1000 nm

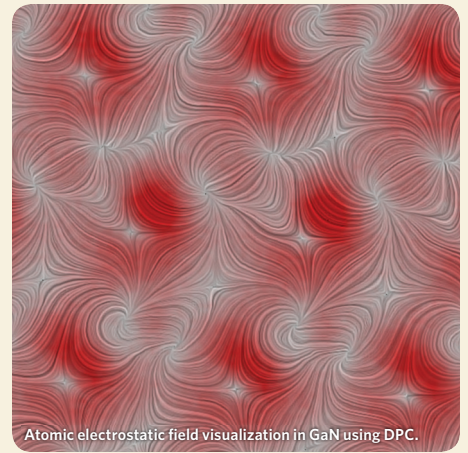


535 meV 1000 nm

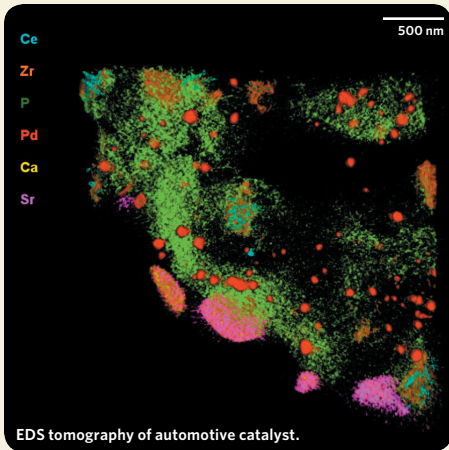


760 meV 1000 nm

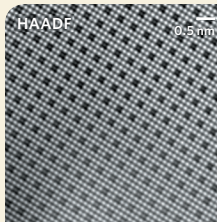
Plasmonic imaging of noble metal nanowires.



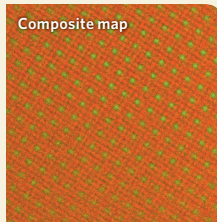
Atomic electrostatic field visualization in GaN using DPC.



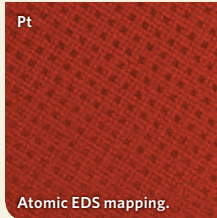
EDS tomography of automotive catalyst.



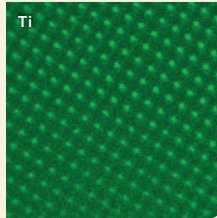
HAADF 0.5 nm



Composite map

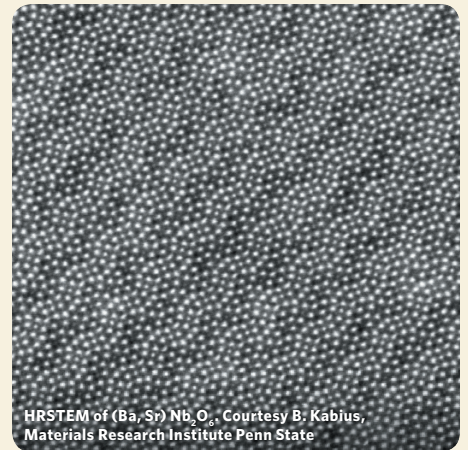


Pt

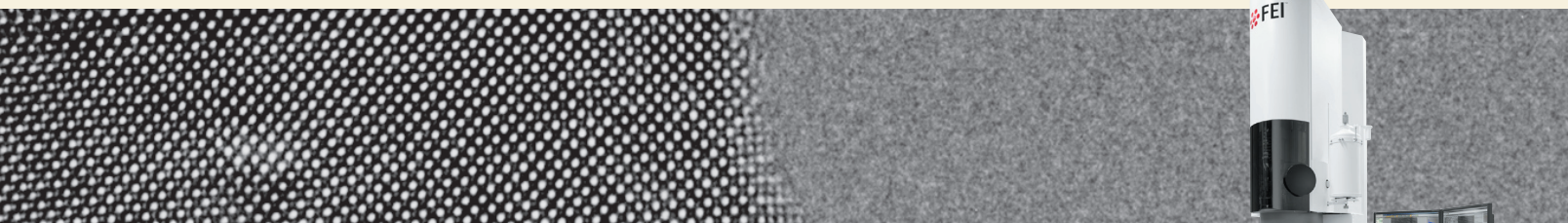


Ti

Atomic EDS mapping.



HRSTEM of (Ba,Sr)Nb<sub>2</sub>O<sub>6</sub>. Courtesy B. Kabius, Materials Research Institute Penn State



# No compromises

## More applications in one instrument

The Titan Themis™ scanning transmission electron microscope (S/TEM) combines proven optics and outstanding EDS performance with enhanced software, a 16-megapixel CMOS camera, and an enhanced Piezo stage to deliver more scientific data, faster than ever before, without compromise to quality.

[Explore.FEI.com/Themis](https://www.fei.com/themis)



# Contents

## X-Ray Tomography

**12 Scanning Brain Networks with Micro-CT**

Ryuta Mizutani, Rino Saiga, Susumu Takekoshi, Makoto Arai, Akihisa Takeuchi, and Yoshio Suzuki

**18 Sub-Micrometer X-ray Tomography of Radiolarians: Computer Modeling and Skeletonization**

Roger C. Wagner, John R. Jungck, and Denis Van Loo

## Biological Electron Microscopy

**24 Microcontact Printing of Thiols: Changing the Way Cell Attachment is Investigated**

B. Leite, R. Dziedzic, L. Cruz, A. L. Gillian-Daniel, C. Nielsen, and L. De La Fuente

**30 Capsule-Based Processing and Handling of Electron Microscopy Specimens and Grids**

Steven L. Goodman, Kristy D. Wendt, Michael S. Kostrna, and Craig Radi

## Microscopy Innovations

**38 2015 *Microscopy Today* Innovation Awards**

## Microscopy 101

**44 Making Your Own Hair Probe: A Letter to the Editor**

Gayle M. Callis

## Departments

**7 Editorial**

**8 Carmichael's Concise Review**

**45 Pioneers**

**46 Industry News**

**48 Product News**

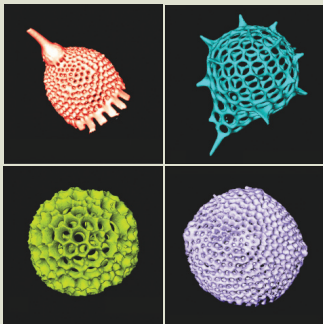
**50 NetNotes**

**60 Calendar of Meetings**

**65 Dear Abbe**

**66 Index of Advertisers**

### About the Cover



Models of selected radiolarians rendered from an X-ray computed tomography dataset. Image width approximately 40  $\mu\text{m}$ .

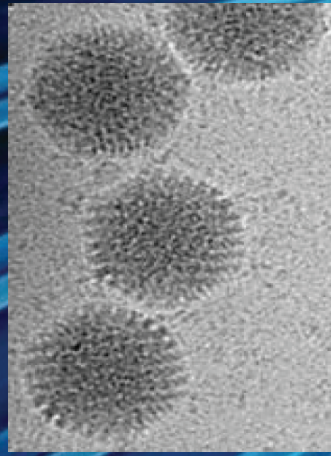
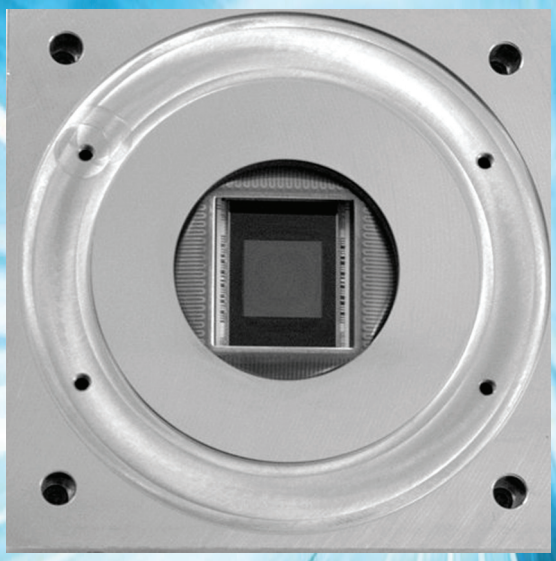
See article by Wagner et al.





# A Leap in Sensitivity and Speed with the XR401 sCMOS Camera

- Cryo TEM
- Low Dose TEM
- Diffraction
- In-Situ TEM
- Extraordinary speed
- Non-Blooming Sensor
- $< 2$  e/pixel noise



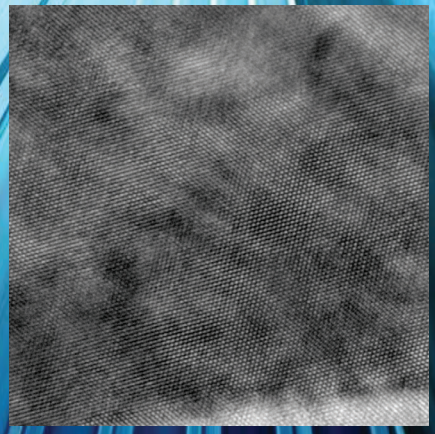
Adenovirus

Dr. Cameron Ackerley  
The Hospital for Sick Children



Diffraction

Dr. Pengfei Hu at the Shanghai University



Lattice

