

The Editor,

The Journal of Glaciology,

SIR,

Polygonal frost patterns

The ice features illustrated in the Figure on p. 290 may be of some interest especially in view of their great similarity in plan to much-patterned ground, a similarity which might provoke speculation upon a genetic relationship. The larger units in the cellular grouping were some 30 in. (0.46 m.) across. They were seen on the morning of 17 February 1958 at Newcastle, Staffs, on a smooth dark tarmac surface. Although the air temperature was below freezing, only in the shade, where the photograph was taken, were the features still intact.

This quite superficial frost growth followed a night of keen frost with clear skies and low relative humidity; there was a strong north breeze. At the time it was not possible to attempt to relate the cells and particularly their nuclei to the nature of the ground surface; but when an examination of the tarmac was made it was seen to have slight undulations on the crests of which there were small polished tar patches. These were the only specific surface details with which the ice nuclei seemed likely to be related and such a connexion was not established. The only other alternative mode of design which suggested itself was a cellular ground level air turbulence such as is thought to have created desiccation polygons noted on Deception Island (1 December 1955).

R. CLARK

91 Highcliffe Road,

Sheffield, 11

11 April 1958

DUPLICATE PAPERS

A new list of duplicate papers in the Library of the Society available for distribution to members can now be obtained from the Editor. As this service is becoming increasingly popular early application is advisable.

BOUND VOLUMES OF THE *JOURNAL OF GLACIOLOGY*

Complete Bound Volumes 1 and 2 are now available on application to the Secretary. See note on outside back cover.

RATES FOR ADVERTISEMENTS IN THE *JOURNAL OF GLACIOLOGY*

Full page	. . .	£12 10s. od.
Half page	. . .	£6 10s. od.

Published twice yearly in Spring and Autumn

All correspondence with regard to advertising in The
Journal of Glaciology should be addressed to:

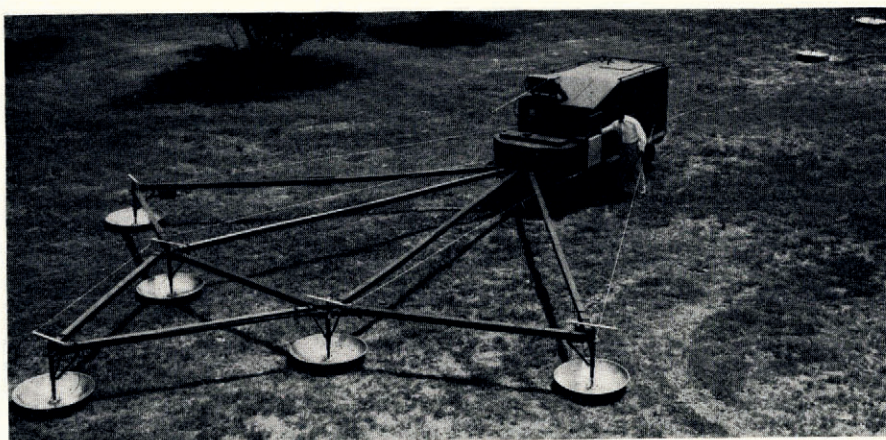
P. C. BARTLETT'S PUBLICITY SERVICE

31 MUSEUM STREET, LONDON, W.C.1

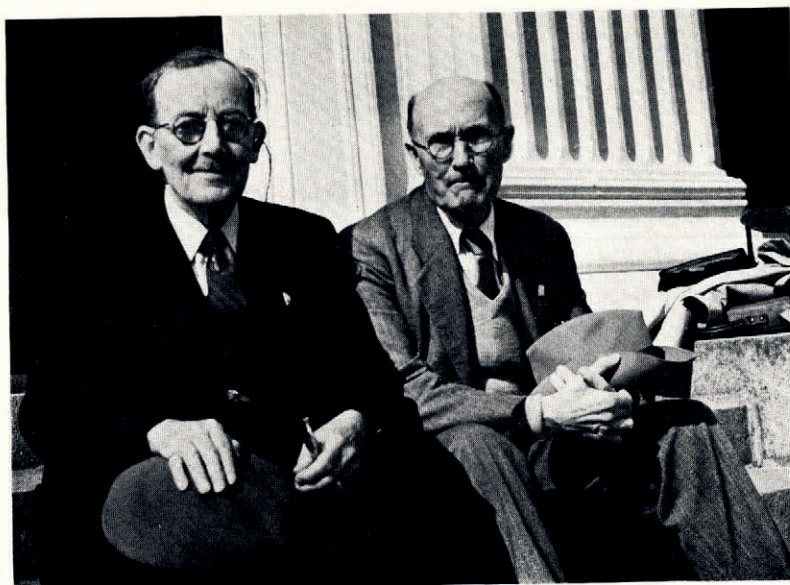
Telephone: MUSEum 8529



*Polygonal frost
patterns, see letter from
Mr. R. Clark
on p. 328.*



*Double crevasse
detector (Model
1), see letter
from Mr.
John C. Cook
on p. 326.*



*Professors
P. L. Mercanton
and
J. E. Church.
See p. 253-4.*