

©2008 Thermo Fisher Scientific Inc. All rights reserved.

https://doi.org/10.1039/C7PY00000A Published online by Cambridge University Press

Get the correct answer up to 100x faster. Really.

Precision and Speed The Thermo Scientific NORAN System 7 speeds you to answers with blazing fast processing at more than 1,000,000 counts per second. Our impeccable accuracy gives you confidence in your results.

Manual or Automatic? In one system you get the ultimate in automation as well as the flexibility to examine your sample manually. You gain the time saving convenience of automatic quantitative mapping and Point & Shoot analysis without sacrificing control.

A Pleasure to Use Included with the powerful spectral and imaging hardware is a suite of software unparalleled in the industry. Just one click to create a report or analyze samples outside the lab with network ready data analysis.

Experience the speed of the NORAN System 7. Sample our demo at www.thermo.com/reallyfast.



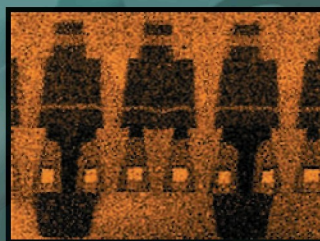
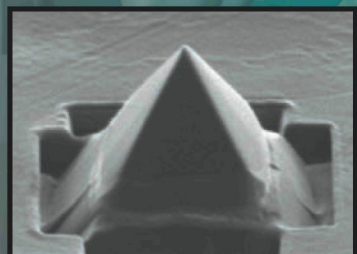
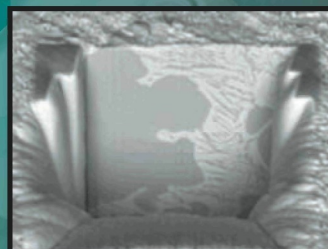
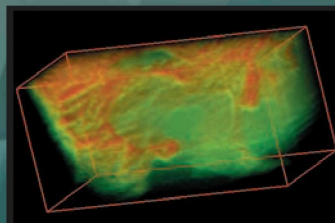
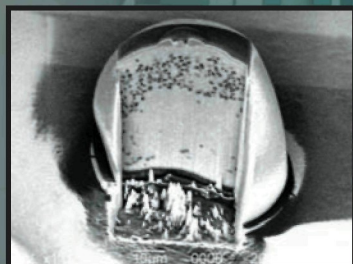
Thermo Scientific NORAN System 7
The optimum combination of detector, analyzer and software for X-ray microanalysis.

Moving science forward

Thermo
SCIENTIFIC
Part of Thermo Fisher Scientific

Power Tool for Grownups

MultiBeam - look - build - analyze - in real time



JIB-4500

NanoFabrication

<https://doi.org/10.1017/S1551929500061678> Published online by Cambridge University Press

Another
Extreme imaging
solution

JEOL

Stability • Productivity • Performance
www.jeolusa.com • salesinfo@jeol.com
978-535-5900

Who says you can't afford to have it all? High-resolution imaging, bitmap milling, TEM sample prep, and high-speed slicing and sampling in real time with this all-in-one SEM/FIB. The new JEOL MultiBeam combines the world's most popular low vacuum LaB₆ electron column with high resolution ion beam optics. Utilize the full power of the MultiBeam power tool for your next nanofabrication project. For more information visit www.jeolusa.com/multibeam.