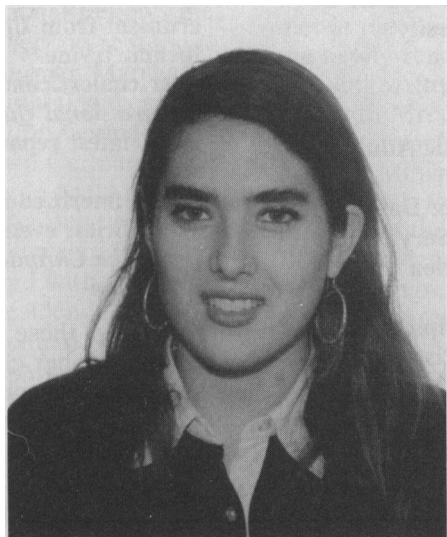


## 1995–96 APSA Latino Graduate Fellows

Sharon Ann Navarro was selected as the APSA's funded Latino(a) Graduate Fellow for 1995–96.

Four other excellent students were selected as non-funded Latino(a) Graduate Fellows. They are Viviana M. Abreu-Hernandez of the University of Puerto Rico; Vanna A. Gonzales of UCLA; Margot Olavarria of Hunter College; and Gabriella Rigg of Northeastern University.



Vanna Gonzales



Margot Olavarria

## APSA Offers Joint Memberships

**Gabrielle Katz, APSA**

The American Political Science Association is pleased to be part of a developing arrangement with the American Sociological Association, the American Historical Association, and the American Society of International Law, to encourage inter-membership through special discounted rates. These joint memberships can significantly reduce the costs of participating in the scholarship of other disciplines.

The **American Sociological Association** is our largest affiliate. Founded in 1905, the ASA embodies a wide spectrum of people interested in advancing the scientific study of society. Membership benefits as an interdisciplinary associate member include a subscription to the newsletter, *Footnotes*, one journal of your choice (from a list of titles), and the Preliminary Annual Meeting Program. The discounted rate

for APSA members to join the ASA is \$46.

The **American Historical Association** attempts to bring together scholars interested in all chronological, geographic, and topical specializations of history. Membership, at a special rate of \$35 for APSA members, includes the annual publications *The American Historical Review* and *Perspectives*, as well as the AHA Annual Meeting Program and other member discounts and benefits.

The newest interdisciplinary member is the **American Society of International Law**. Founded in 1906, the ASIL is a professional organization interested in the study and advancement of law in the international arena. The ASIL's diverse membership is comprised of lawyers and non-lawyers sharing a common interest in the promotion and continuance of law and policy as a basis for the study of international affairs. The \$55 membership for APSA members includes receipt of the premier quarterly in the

field, *The American Journal of International Law*, and the *ASIL Newsletter*, published five times a year. Members enjoy interaction with over 4,500 worldwide members of ASIL involved in all aspects of international law, discounts on the annual meeting, the Hague meeting, and other society events and publications.

All of these scholarly societies are committed to joint membership opportunities to help scholars keep pace with the increasingly fluid interdisciplinary boundaries, recognizing that participants in different disciplines have common questions and common goals. Political science has always included a number of fields with cross-disciplinary roots, including political sociology, public opinion, political history, and political economy. This mutual exchange will allow scholars trained in other disciplines to stay current with the relevant cross-disciplinary work in political science.

If you are an APSA member interested in interdisciplinary mem-

bership in one or more of these related organizations, contact the APSA membership office at: 1527 New Hampshire Avenue, NW, Washington, D.C. 20036 and enclose check or credit card information (APSA accepts Visa and Mastercard) for the appropriate dues. Members of the other associations APSA is cooperating with can obtain joint membership with APSA by contacting the membership offices of their associations.

## APSA Gopher Report

Matthew Linkie, *APSA*

In its second edition the "APSA Gopher Report" continues to familiarize political scientists with recent developments on the Internet. Through the efforts of several of its members, APSA brings you closer to the wealth of available information.

A gopher provides you with the capability to move around the Internet by selecting categories of information. It is a link from your terminal to others around the world. The general coordinator of the APSA gopher project is Bill Ball, assistant professor of political science at Trenton State College. He has brought the APSA into the links of the Internet by maintaining the APSA gopher site at Trenton State College.

Accessing the APSA gopher server enables you to discover files APSA is making available and to connect to computers around the world holding political science research documents, press releases, and updates on worldwide political current events. Each "APSA Gopher Report" will inform you of new items on the APSA gopher server menu and introduce new gopher sites.

The APSA gopher server is designed to work in conjunction with the Political Science Research and Teaching List (psrt-l) which itself has 1100 subscribers in 34 countries. PSRT-L is a Listserve discussion group. (Send the command "subscribe psrt-l your name" to listserv@mizzou1.missouri.edu to join.)

The APSA gopher server is currently averaging 180 accesses a day. The root menu is as follows (\* indicates new menus or updated information):

**About the American Political Science Association Gopher**  
**American Government Gopher at Northwestern University**  
**Comparative Politics**  
**International Relations**  
**Political Theory**  
**Public Policy and Public Administration**  
**Computers, Software & Data**  
**APSA Information & Services**  
**\* Conference Information**  
**\* Journal Information**  
**Scholarships, Fellowships, & Grants**  
**The Political Science List of Lists**  
**E-Mail Directory of Political Scientists**  
**Related Gophers and Reference Information**

\* The *Conference Information* menu contains new information regarding the Midwest Political Science Association Meeting and the APSA Annual Meeting in Chicago, including the full program schedules.

\* A new edition to the APSA gopher server, the *Journal Information* menu lists current political sciences journals, their editors, contents, and subscription information.

The *APSA Information & Services* menu includes documents on APSA's Call for Papers, publications, fellowships and grants, membership, and other services, all of which are updated regularly.

To access the APSA gopher server select the "gopher client" option from your main menu. If you are unfamiliar with using gopher servers or do not have a "gopher client" option on your main menu contact whoever provides your access to the Internet.

After selecting the "gopher client," type [apsa.trenton.edu](http://apsa.trenton.edu) and hit enter. The above menu will appear.

Connecting to other gopher servers is just as easy. The following list contains brief descriptions of gopher sites available on the Internet:

[mlink.hh.lib.umich.edu](http://mlink.hh.lib.umich.edu)  
**Worldwide news services, journals, and digests from University of Michigan**  
[gopher.house.gov](http://gopher.house.gov)  
**House of Representatives documents**  
[peg.cwis.uci.edu](http://peg.cwis.uci.edu)  
**General files relevant to US government from University of California, Irvine**  
[gopher.cqalert.com](http://gopher.cqalert.com)  
**Congressional Quarterly publications, latest reports and lead stories**  
[chronicle.merit.edu](http://chronicle.merit.edu)  
**Top stories, events, and deadlines from *The Chronicle of Higher Education***

To access these sites simply select the "gopher client" option from your main menu. Type in the name of the gopher site, and hit enter. This will connect you to that particular site's root menu.

Suggestions or comments on other gopher links can be sent by e-mail to Bill Ball at [ball@trenton.edu](mailto:ball@trenton.edu) or Matt Linkie at [incem023@sivm.si.edu](mailto:incem023@sivm.si.edu).

Correction: The March 1995 report in *PS* listed Scott Althaus's gopher site as [gopher.nwu.edu](http://gopher.nwu.edu). To go directly to the American Politics gopher at Northwestern University, use [toby.scott.nwu.edu](http://toby.scott.nwu.edu).

## Other Associations

The German Studies Institute has posted the results from the 1994 German State, Federal, and Parliament elections on the Internet. Included are pre and post election summaries and analyses, as well as causal factors, state voter participation, party involvement, and detailed age, gender and employment voting characteristics.

The gopher site is located at [jhuniverse.hcf.jhu.edu](http://jhuniverse.hcf.jhu.edu). To get to the election data from the root menu select "Divisions, Centers, and Affiliates." Then select "Centers and Affiliates." From this menu choose "American Institute for Contemporary German Studies." Within this menu go to "HELGA: Hopkins Electronic Library for Current Information on Germany."