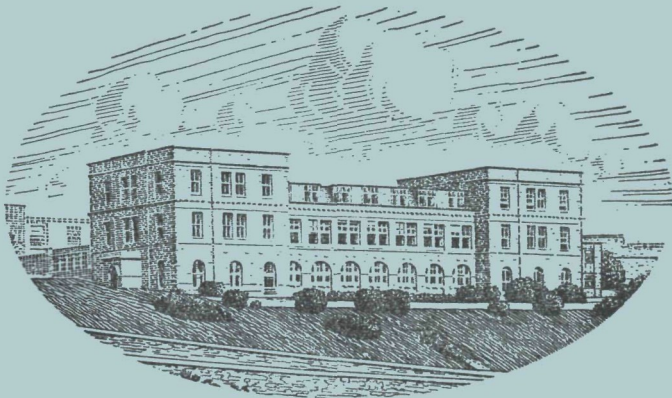


JOURNAL OF THE  
MARINE BIOLOGICAL ASSOCIATION  
OF THE UNITED KINGDOM



THE PLYMOUTH LABORATORY

VOLUME 52, No. 3  
*(issued August 1972)*

CAMBRIDGE  
AT THE UNIVERSITY PRESS  
1972

*Price £6.00 net*

*(U.S.A. \$19.00)*

*Annual Subscription for Volume (of four parts): £22.00 net (U.S.A. \$70.00)*

# THE MARINE BIOLOGICAL ASSOCIATION OF THE UNITED KINGDOM

## PATRON

H.R.H. THE PRINCE PHILIP DUKE OF EDINBURGH, F.R.S.

## OFFICERS AND COUNCIL

*President:* Sir ALAN L. HODGKIN, K.B.E., Sc.D., P.R.S.

### *Vice-Presidents*

Prof. A. V. HILL, C.H., O.B.E., Sc.D., LL.D.,  
F.R.S.  
Sir EDWARD J. SALISBURY, Kt., C.B.E., D.Sc.,  
LL.D., F.R.S.  
Prof. Sir JAMES GRAY, Kt., C.B.E., M.C., Sc.D.,  
LL.D., F.R.S.

Prof. Sir ALISTER C. HARDY, Kt., D.Sc., F.R.S.  
Sir C. MAURICE YONGE, Kt., C.B.E., D.Sc., F.R.S.  
Rear Admiral Sir EDMUND G. IRVING, K.B.E., C.B.  
Sir FREDERICK S. RUSSELL, Kt., C.B.E., D.S.C.,  
D.F.C., D.Sc., LL.D., F.R.S.  
Sir EDWARD R. CHADWYCK-HEALEY, Bt., M.C.

### *Honorary Members*

Prof. Sir JAMES GRAY, Kt., C.B.E., M.C., Sc.D.,  
LL.D., F.R.S.  
Prof. Sir ALISTER C. HARDY, Kt., D.Sc., F.R.S.  
E. H. E. HAVELOCK, C.B., C.B.E.

Prof. A. V. HILL, C. H., O.B.E., Sc.D., LL.D., F.R.S.  
Dr A. G. HUNTSMAN  
Dr A. C. REDFIELD  
Sir C. MAURICE YONGE, Kt., C.B.E., D.Sc., F.R.S.

## COUNCIL

### Elected Members

P. F. BAKER, Ph.D.  
Prof. R. B. CLARK, D.Sc.  
R. I. CURRIE  
Sir GEORGE DEACON, Kt., C.B.E., D.Sc., F.R.S.  
Prof. J. M. DODD, Ph.D.  
M. R. DROOP, D.Sc.  
Rear Admiral Sir EDMUND G. IRVING, K.B.E., C.B.  
R. D. KEYNES, Sc.D., F.R.S.

A. J. LEE, D.S.C.  
Prof. O. E. LOWENSTEIN, D.Sc., F.R.S.  
C. E. LUCAS, C.M.G., D.Sc., F.R.S.  
N. B. MARSHALL, Sc.D., F.R.S.  
Prof. D. NICHOLS, D.Phil.  
F. E. ROUND, D.Sc.  
Prof. J. Z. YOUNG, D.Sc., F.R.S.

### Governors

J. GRAHAM (Ministry of Agriculture, Fisheries  
and Food)  
The Worshipful Company of Fishmongers:  
Sir EDWARD R. CHADWYCK-HEALEY, Bt., M.C.  
Col. Sir JOHN G. CAREW POLE, Bt., D.S.O., T.D.  
The Hon. HUGH WALDORF ASTOR, J.P.  
Prof. J. W. S. PRINGLE, M.B.E., Sc.D., F.R.S.  
(Oxford University)

M. J. WELLS, Sc.D. (Cambridge University)  
EDWARD HINDLE, Sc.D., F.R.S. (British  
Association)  
Prof. G. P. WELLS, Sc.D., F.R.S. (Zoological Society)  
Prof. SIR BERNARD KATZ, Kt., M.D., D.Sc., F.R.S.  
(Royal Society)  
Prof. E. J. DENTON, Sc.D., F.R.S. (Physiological  
Society)

*Hon. Treasurer:* The Hon. HUGH WALDORF ASTOR, J. P., 14 Culross Street, London, W1Y 3HN

*Secretary:* J. E. SMITH, C.B.E., Sc.D., F.R.S., The Laboratory, Citadel Hill, Plymouth, PL1 2PB

## SCIENTIFIC STAFF

*Director:* J. E. SMITH, C.B.E., Sc.D., D.Sc., F.I.Biol., F.R.S.

MARY W. PARKE, D.Sc., Ph.D., F.L.S., F.I.Biol.,  
F.R.S. (*Phycologist*)  
P. G. CORBIN, B.A. (*Zoologist*)  
N. A. HOLME, M.A. (*Zoologist*)  
G. R. FORSTER, B.Sc. (*Zoologist*)  
E. D. S. CORNER, M.Sc., Ph.D. (*Biochemist*)  
A. J. SOUTHWARD, D.Sc., Ph.D. (*Zoologist*)  
J. V. HOWARTH, B.Sc. (*Physiologist*)  
Q. BONE, M.A., D.Phil. (*Zoologist*)  
G. T. BOALCH, B.Sc., Ph.D. (*Phycologist*)  
G. W. BRYAN, B.Sc., Ph.D. (*Zoologist*)

A. G. DAVIES, B.Sc., Ph.D. (*Physical Chemist*)  
P. R. DANDO, B.Sc., Ph.D. (*Biochemist*)  
P. E. GIBBS, B.Sc., M.A., Ph.D. (*Zoologist*)  
B. L. ROBERTS, M.A., Ph.D. (*Physiologist*)  
J. C. GREEN, B.Sc., Ph.D. (*Phycologist*)  
D. K. GRIFFITHS, M.Sc. (*Physical Oceanographer*)  
G. W. POTTS, B.Sc., Ph.D. (*Zoologist*)  
J. B. GILPIN-BROWN, B.Sc., Ph.D. (*Zoologist*)  
H. MEVES, M.D. (*Physiologist*)  
M. WHITFIELD, B.Sc., Ph.D. (*Physical Chemist*)  
M. R. CLARKE, B.Sc., Ph.D. (*Zoologist*)

J. H. WICKSTEAD, D.Sc., Ph.D., F.I.Biol., Foreign and Commonwealth Office (O.D.A.) (*Zoologist*)

Prof. E. J. DENTON, Sc.D., F.I.Biol., F.R.S. (*Physiologist*),

Royal Society Research Professor of Bristol University

MOLLY F. SPOONER, Ph.D. (*Special Appointment: oil pollution*)

August 1972

JOURNAL OF THE MARINE BIOLOGICAL ASSOCIATION

INSTRUCTIONS FOR THE PREPARATION  
OF MANUSCRIPTS

TITLE

The title of the paper should be kept as short as possible.

The name of the author at the beginning of the paper should be followed only by senior qualifications.

TEXT

Manuscripts must be typed (double-spaced) on one side of the paper, leaving ample margins, with the folios numbered. Words to be printed in italic should be underlined. The first mention of Latin names of species should be followed by the authority, except where reference is made to a work in which the authority appears (e.g. *Plymouth Marine Fauna*).

Manuscripts should be as concise as possible. Undue length will undoubtedly lead to delay in publication as the paper will be returned to the author for shortening.

All linear measurements and weights should be in the metric scale.

For symbols and abbreviations, the recommendations of the Royal Society (1951) are followed.

TABLES

Tables should be set out on separate sheets numbered in Arabic numerals, and given a concise heading.

TEXT-FIGURES

Text-figures should be in black ink. It is important to make the lines sufficiently black. Areas to be mechanically stippled should be indicated by light-blue pencil shading.

No drawing should be so large that it must be reduced to less than one-third of its original size. The degree of reduction need not be inserted by the author.

Illustrations requiring lettering should not be drawn on Ethulon.

The size of the printed area of the *Journal* page is 18 × 12 cm. The maximum size for a full-page figure (with legend) is 19½ × 13½ cm.

Lettering, numerals, etc., should be marked clearly in blue pencil and indicating the position in which they are to be inserted by an arrow in blue pencil. This should be kept to a workable minimum, all details being included in the legend.

**Authors are requested to see that their manuscripts are in finished form and completely ready for publication so that corrections may be reduced to a minimum, and these are confined as far as possible to the first proof. If the cost for corrections exceeds a reasonable figure, the author is liable to be charged the full extent of the excess.**

Axes and graduation marks on graphs must be inked in. The lines on graph paper are not normally reproduced, and should be blue or faint grey.

Legends for figures must be typed all together on a separate sheet, and not inserted on the actual illustrations.

Text-figures are numbered in arabic numerals, and referred to in the text as 'Fig. 1', etc. Where there is a plate containing several figures, the text-figures are referred to as 'Text-fig. 1', etc.

All line-drawings are printed as text-figures, as well as photographs for which fine detail is not required.

PLATES

Photographs should be on smooth-surfaced paper, semi-matt or glossy. The edges of the photograph must be trimmed square. It is important that the background in the photograph be of a uniform tone and free from blemishes.

Divisions of plates, or separate figures on one plate, are indicated by capital letters.

SUMMARY

Each paper must be accompanied by an informative Summary, giving the main results of the work published.

REFERENCES

References are listed alphabetically at the end of the paper. The full title of the paper must be given. Titles of papers, but not of books, are decapitalized. Titles of Journals are abbreviated as in the *World List of Scientific Publications* (4th ed., 1963 on). Volume (Vol.), Band (Bd.), or Tome (T.) numbers are in Arabic numerals. Where a volume appears in parts the part need only be specified where each has separate pagination. References to books should include the publisher. Citations in text to be given by author's name followed by date in brackets.

*Examples:*

MARSHALL, S. M., NICHOLLS, A. G. & ORR, A. P., 1939. On the growth and feeding of young herring in the Clyde. *J. mar. biol. Ass. U.K.*, Vol. 23, pp. 427-55.

RUSSELL, F. S. & YONGE, C. M., 1928. *The Seas*. 379 pp. London: Frederick Warne.

SUBSCRIPTIONS

*Journal of the Marine Biological Association of the United Kingdom* is published quarterly. Single parts cost £6.00 net (\$19.00 in the U.S.A.) plus postage.

Four parts form a volume. The subscription price of a volume (which includes postage) is £22.00 net (\$70.00 in the U.S.A.).

Second class postage paid at New York, N.Y.

# Ecology and Palaeoecology of Marine Environments

WILHELM SCHÄFER

The habits of all the animals in the North Seas, their manner of dying and decay and the ways in which the various hard parts are buried in the sediment, are described in detail in this book. The total range of biological processes from life to death and final burial for almost every animal group is encom-

passed, and the choice of the North Sea for the very original research carried out by the author is entirely appropriate. Professor Schäfer is regarded as the doyen in this field and his unique book will be invaluable for all palaeontologists and sedimentologists

£10.00

*Other titles of interest*

**SALMON AND TROUT**  
*A Resource, its Ecology, Conservation and Management*

Derek H. Mills £4.00

**THEORY OF FISH POPULATION DYNAMICS**

*As the Biological Background for Rational Exploitation and Management of Fishery Resources*

G. V. Nikolskii £9.00



**Oliver & Boyd**

Tweeddale Court,  
14 High Street,  
Edinburgh EH1 1YL

## The Journal of General Microbiology

Partial contents of Volume 70 Part 3 May 1972

### DEVELOPMENT AND STRUCTURE

Ultrastructural Development of Stalk-producing Cells in *Dictyostelium discoideum*, a Cellular Slime Mould. By R. P. GEORGE, H. R. HOHL and K. B. RAPER.

### PHYSIOLOGY AND GROWTH

Effect of Long-chain Fatty Acids on Some Trypanosomatid Flagellates. By L. V. CUNNINGHAM, B. H. KAZAN and S. S. KUWAHARA.

Water Relations of *Salmonella oranienburg*: Accumulation of Potassium and Amino Acids during Respiration. By J. H. B. CHRISTIAN and J. M. HALL.

Physiology of a New Facultatively Autotrophic Thermophilic Thiobacillus. By R. A. D. WILLIAMS and the late D. S. HOARE.

### GENETICS AND MOLECULAR BIOLOGY

Isolation and Some Properties of Temperature-sensitive Mutants of *Micrococcus radiodurans* Defective in DNA Synthesis. By B. E. B. MOSELEY, A. MATTINGLY and M. SHIMMIN.

The Type b Capsulation Locus of *Haemophilus influenzae*: Map Location and Size. By B. W. CATLIN, J. W. BENDLER, III and S. H. GOODGAL.

Absence of Laccase from Yellow-spored Mutants of *Aspergillus nidulans*. By A. J. CLUTTERBUCK.

Two Modes of 'Curing' Transmissible Bacterial Plasmids. By V. SALISBURY, R. W. HEDGES and N. DATTA.

Host Ranges of R Factors. By N. DATTA and R. W. HEDGES.

The Relationship between Filaments, Killing and Restoration in Irradiated *Escherichia coli* Strain B. By D. BROWN and N. E. GILLIES.

Methionine Regulatory Defects in *Salmonella typhimurium* Arising from Amber-suppressible Mutations. By A. C. MINSON and D. A. SMITH.

A Mutant of *Escherichia coli* with a Defect in Energy Metabolism. By G. TURNOCK, S. K. ERICKSON, B. A. C. ACKRELL and B. BIRCH.

Non-smooth Mutants of *Salmonella typhimurium*: Differentiation by Phage Sensitivity and Genetic Mapping. By R. G. WILKINSON, P. GEMSKI, JUN. and B. A. D. STOCKER.

£4.00 net (\$12.00 in U.S.A.). Annual Subscription £32.00 net (\$106.00 in U.S.A.)

## CAMBRIDGE UNIVERSITY PRESS

Bentley House, 200 Euston Road, London NW1 2DB

32 East 57th Street, New York, N.Y. 10022

PROCEEDINGS OF THE  
MALACOLOGICAL SOCIETY  
OF LONDON

Vol. 40, Part 2, August 1972

£2.00 net, or \$6.50 U.S.

**M. Ganagarajah and A. S. M. Saleuddin.** Electron histochemistry of the outer mantle epithelium in *Helix pomatia* during shell regeneration

**Walter Narchi.** On the biology of *Iphigenia brasiliensis* Lamarck, 1818 (Bivalvia, Donacidae)

**Alan Solem.** *Tekoulina*, a new viviparous tornatellinid land snail from Rarotonga, Cook Islands

**Nigel F. Mathers.** The tracing of a natural algal food labelled with a Carbon 14 isotope through the digestive tract of *Ostrea edulis* L

**J. I. Mosher.** The responses of *Macoma balthica* (Bivalvia) to vibrations

**M. J. Winterbourn.** Morphological variation of *Potamopyrgus jenkinsi* (Smith) from England and a comparison with the New Zealand species, *Potamopyrgus antipodarum* (Gray)

**D. W. Payne, N. A. Thorpe and Elizabeth M. Donaldson.** Cellulolytic activity and a study of the bacterial population in the digestive tract of *Scrobicularia plana* (da Costa)

Annual subscription (three parts) £5.00 (\$17.00) post free.

BLACKWELL SCIENTIFIC PUBLICATIONS LTD

Oxford London Edinburgh Melbourne

# THE JOURNAL OF ECOLOGY

EDITORS: A. J. WILLIS and P. J. GRUBB

VOL. 60, No. 2

JULY 1972

- R. A. Goldstein and D. F. Grigal.** Definition of vegetation structure by canonical analysis.
- H. A. I. Madgwick and P. A. Desrochers.** Association-analysis and the classification of forest vegetation of the Jefferson National Forest.
- J. J. Mott.** Germination studies on some annual species from an arid region of Western Australia.
- M. P. Austin, P. S. Ashton and P. Greig-Smith.** The application of quantitative methods to vegetation survey. III. A re-examination of rain forest data from Brunei.
- Jorge O. Ares.** Equitability, competition and seasonal succession in a plant community.
- Jorge O. Ares and Rolando J. C. Leon.** An ecological assessment of the influence of grazing on plant community structure.
- J. C. Lees.** Soil aeration and Sitka spruce seedling growth in peat.
- Janis Antonovics.** Population dynamics of the grass *Anthoxanthum odoratum* on a zinc mine.
- Guillermo Sarmiento.** Ecological and floristical convergences between seasonal plant formations of tropical and subtropical South America.
- C. R. Janssen.** The palaeoecology of plant communities in the Dommel Valley, North Brabant, Netherlands.
- Ann Drew and C. Reilly.** Observations on copper tolerance in the vegetation of a Zambian copper clearing.
- J. M. Lock.** The effects of hippopotamus grazing on grasslands.
- D. J. Boatman.** The growth of *Schoenus nigricans* L. on blanket bog peats. II. Growth on Irish and Scottish peats.
- D. Walker.** Vegetation of the Leak Ipea region, New Guinea Highlands. II. Kayamanda Swamp.
- D. F. Parkhurst and O. L. Loucks.** Optimal leaf size in relation to environment.
- G. Russell.** Phytosociological studies on a two-zone shore. I. Basic pattern.
- G. F. Peterken and J. C. E. Hubbard.** The shingle vegetation of southern England: the holly wood on Holmstone Beach, Dungeness.
- BIOLOGICAL FLORA OF THE BRITISH ISLES**
- S. E. Howarth and J. T. Williams.** *Chrysanthemum segetum* L.
- S. M. Haslam.** *Phragmites communis* Trin.
- Robert E. L. Naylor.** *Alopecurus myosuroides* Huds.

Subscription price £14.00 per volume of three parts (single parts £5.25 each)

**BLACKWELL SCIENTIFIC PUBLICATIONS LTD**  
**OSNEY MEAD · OXFORD**

# THE JOURNAL OF ANIMAL ECOLOGY

EDITORS: H. N. SOUTHERN and E. BROADHEAD

VOL. 41, No. 2

JUNE 1972

- Peter R. Morgan.** The influence of prey availability on the distribution and predatory behaviour of *Nucella lapillus* (L.).
- Ralph D. Morris and P. R. Grant.** Experimental studies of comparative interaction in a two-species system. IV. *Microtus* and *Clethrionomys* species in a single enclosure.
- John A. Wallwork.** Distribution patterns and population dynamics of the microarthropods of a desert soil in southern California.
- Robert E. Stoecker.** Competitive relations between sympatric populations of voles (*Microtus montanus* and *M. pennsylvanicus*).
- J. M. Edington and M. A. Edington.** Spatial patterns and habitat partition in the breeding of birds of an upland wood.
- J. M. Anderson and I. N. Healey.** Seasonal and inter-specific variation in major components of the gut contents of some woodland Collembola.
- David Rogers.** Random search and insect population models.
- N. P. E. Langham.** Chick survival in terns (*Sterna* spp.) with particular reference to the common tern.
- T. G. Pearce.** Acid intolerant and ubiquitous Lumbricidae in selected habitats in North Wales.
- Robert Moss.** Food selection by red grouse (*Lagopus lagopus scoticus* (Lath.)) in relation to chemical composition.
- P. M. Greenham.** The effect of the temperature of cattle dung on the rate of development of the larvae of the Australian bushfly, *Musca vetustissima* Walker (Diptera: Muscidae).
- David Wool.** The growth phase of serially transferred *Triblium* populations.
- R. R. Baker.** Territorial behaviour of the nymphalid butterflies, *Aglais urticae* (L.) and *Inachis io* (L.).
- Barbara K. Snow and D. W. Snow.** Feeding niches of hummingbirds in a Trinidad valley.
- A. D. Sefton and T. B. Reynoldson.** The effect of the temperature and water chemistry on the life-cycle of *Planaria torva* (Müller) (Turbellaria; Tricladida).
- D. J. W. Rose.** Times and sizes of dispersal flights by *Cicadulina* species (Homoptera: Cicadellidae), vectors of maize streak disease.

*Subscription price £14.00 per volume of three parts (single parts £5.25 each)*

**BLACKWELL SCIENTIFIC PUBLICATIONS LTD**  
OSNEY MEAD · OXFORD