

composed of 7 items: two positive items (delusions and hallucinations) which make the m-SAND Positive sub-scale (m-SAND-P) and five negative items (anhedonia, alogia, avolition, asociality and affective flattening) which make the m-SAND Negative sub-scale (m-SAND-N) Each item is rated from 0 to 5 (not observed; mild; moderate; moderately severe; severe; and extreme). Other measurements included the Self-evaluation of Negative Symptoms (SNS), a validated scale that provides meaningful information regarding the patients' own perception of their negative symptoms. Least squares (LS) means were calculated for the change from baseline to final visit using a mixed model for repeated measures (MMRM).

**Results:** 188 patients were included in the study. The mean age was 39.8 years and 65% of patients were men. The mean duration of illness was 12 years. At baseline, patients rated alogia and apathy (mean SNS score: 5.7) to be the most severe and then asociality (5.5). In contrast, doctors found affective blunting (mean m-SAND total score: 4.3), apathy (4.2) and anhedonia (4.0) to be the most severe.

After the end of the observational period all negative symptom sub-domains improved significantly according to both the patients' and doctors' views. The latter group reported -1.9 LS mean change from baseline in apathy, -1.8 in anhedonia, and -1.7 in asociality (all p-value <0.0001). Patients felt most change in alogia and asociality (-2.7), and apathy and anhedonia (-2.4).

**Conclusions:** In summary, both patients and doctors reported significant improvement in predominant negative symptoms. Nonetheless, there were some differences how they perceived severity and change in the specific domains.

**Disclosure of Interest:** J. Dragasek: None Declared, Z. Dombi Employee of: Gedeon Richter Plc., K. Acsai: None Declared, V. Dzurilla Employee of: Gedeon Richter Plc., Á. Barabássy Employee of: Gedeon Richter Plc.

## EPP0176

### Dandy-Walker malformation and psychotic disorder. Review in accordance with a clinical case

A. Calle González\*, D. Batet Sánchez, Á. Martínez Hernanz and I. Roque González

Psychiatry, Hospital Universitario de Getafe, Getafe, Spain

\*Corresponding author.

doi: 10.1192/j.eurpsy.2024.380

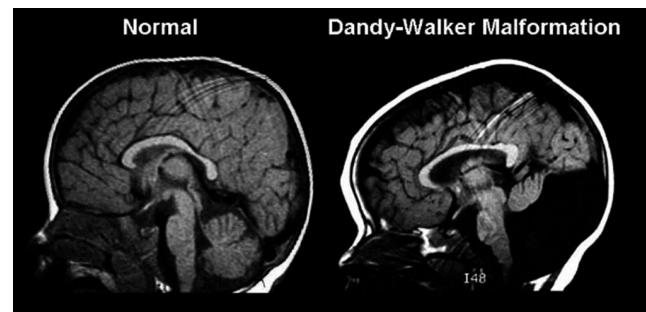
**Introduction:** A clinical case is presented of an 18-year-old woman diagnosed with Dandy-Walker malformation, who is admitted to an Acute Inpatient Psychiatry Unit due to atypical psychotic symptoms, pseudology and aggressive behaviour. After several medication trials, there is a partial response observed with low doses of clozapine, consolidating the improvement afterwards, being referred to an open-door community mental health center because of poor family and social network.

**Objectives:** Review clinical information about Dandy-Walker malformation and the development of psychiatric disorders, specifically psychotic symptoms, pointing out the peculiarities regarding clinical presentation and treatment management.

**Methods:** Search in the medical database PUBMED, MEDSCAPE and UPTODATE. Keywords: "Dandy-Walker Syndrome", "Psychotic Disorders".

**Results:** The Dandy-Walker syndrome consists on a cystic dilatation of the fourth ventricle, an abnormally high tentorium and the agenesis of the cerebellar vermis. Cerebellar structures are involved in cognitive, emotional and behavioural processes. This syndrome is related to the development of psychotic and affective disorders, as well as obsessive-compulsive disorder. The clinical presentation is usually atypical, being characterised by an early onset, a family history of psychosis and a high prevalence of cognitive deficit and borderline intelligence. There are no specific drugs recommended for the treatment of these patients, which present a high rate of refractoriness to antipsychotic treatments, together with a greater sensitivity to its side effects. Depending on the clinical presentation it is advisable to focus on the most relevant symptoms to be treated and potential side effects in order to reduce polypharmacy.

**Image:**



**Conclusions:**

- The Dandy-Walker syndrome is related to a higher risk of psychiatric disorders
- Clinical presentation is usually atypical and in early stages
- There is a high rate of refractoriness and greater sensitivity to treatments
- A specific pharmacological treatment is not recommended and it is recommended to avoid polypharmacy

**Disclosure of Interest:** None Declared

## EPP0177

### Are direct costs in schizophrenia influenced by duration of illness? results from a retrospective follow-up study

I. Calzavara-Pinton<sup>1</sup>, G. Nibbio<sup>1</sup>, B. Cabassi<sup>1\*</sup>, E. Invernizzi<sup>1</sup>, D. Di Carlo<sup>1</sup>, N. Necchini<sup>1</sup>, L. Bertoni<sup>1</sup>, J. Lisoni<sup>2</sup>, G. Deste<sup>1,2</sup>, S. Barlati<sup>1,2</sup> and A. Vita<sup>1,2</sup>

<sup>1</sup>DEPARTMENT OF CLINICAL AND EXPERIMENTAL SCIENCES, UNIVERSITY OF BRESCIA and <sup>2</sup>Department of Mental Health and Addictions, ASST Spedali Civili di Brescia, BRESCIA, Italy

\*Corresponding author.

doi: 10.1192/j.eurpsy.2024.381

**Introduction:** In Italy, it was recently estimated that the total economic burden for schizophrenia is € 2.7 billions, of which around 50% is derived from direct costs and 81% of these are due to hospitalization, residential facilities and semi-residential facilities, whereas only 10% of direct costs is derived from

pharmacotherapy (Marcellusi *et al.* BMJ Open 2018; 8, e018359). Considered the high economic burden that schizophrenia has on healthcare systems (estimated to be between 1.4 % and 3 % of the total), a better characterization of the clinical variables that mostly influence the costs represent a topic of great clinical interest (Altamura *et al.* 2014 Official Journal of the Italian Society of Psychopathology 2014; 20, 223–243).

**Objectives:** The aim of this study was to analyze whether duration of illness has an impact on the costs derived from the use of services (which account for the majority of the direct costs) in a cohort of subjects living with schizophrenia spectrum disorders (SSD).

**Methods:** A total of 496 subjects receiving treatment from the Community Mental Health Centers (CMHC) of Brescia (Italy) were included in the study: for each patient demographic data, data regarding the duration of illness (in months), and data related to the use of service between January 1<sup>st</sup>, 2022 and December 31<sup>st</sup>, 2022 were derived from the regional database of mental health (“SIPRL”). Data on the use of service were then converted to costs using the regional rate tables for outpatient services, residential and semi-residential facilities, and the Diagnosis-Related Groups (DRG)-driven rate tables for hospitalization data. Partial correlations analyses were performed between duration of illness, corrected for age, and cost-related variables. All analyses were performed through SPSS v28 and p values <0.05 were considered significant.

**Results:** A higher duration of illness was correlated with higher costs for outpatient non-pharmacological interventions ( $p=0.010$ ), for residential facilities ( $p=0.025$ ) and total costs, both including and excluding hospital admissions ( $p=0.005$  and  $p=0.007$ , respectively), but not with hospitalization costs ( $p=0.773$ ).

**Conclusions:** The total expenditure for people living with SSD is higher for people with a longer duration of illness. These findings raise an important issue, which is that the mental health system in Italy invests more in subjects with a longer history of disease: this is in contrast with the international guidelines which prompt to intervene early in the course of the disease in patients living with SSD with outpatient rehabilitation interventions.

**Disclosure of Interest:** None Declared

## EPP0178

### Evaluation of Relationship of Neutrophil/Lymphocyte, Platelet/Lymphocyte, Monocyte/Lymphocyte Monocyte/HDL Ratios and Systemic Immune Inflammatory Index Value with Antipsychotic Treatments in Schizophrenic Patients

H. Söylemez\*, S. N. İspir, H. R. Demirel, E. Yıldız and M. Aydın  
Department of Psychiatry, Selçuk University, Faculty of Medicine, Konya, Türkiye

\*Corresponding author.

doi: 10.1192/j.eurpsy.2024.382

**Introduction:** There are studies showing that the systemic inflammation response in patients diagnosed with schizophrenia is different from healthy controls. Neutrophil-lymphocyte ratio (NLR), platelet-lymphocyte ratio (TLR), monocyte-lymphocyte ratio (MLR),

monocyte-HDL ratio (MHO) and systemic immune inflammation index (SII) have recently been used as inflammation indicators.

**Objectives:** NLR, TLR, MLR, MHO and SII have been evaluated in many studies in schizophrenia patients. The aim of our study is to evaluate the relationship between NLR, TLR, MLR, MHO, SII values and antipsychotic treatments of patients diagnosed with schizophrenia.

**Methods:** 203 individuals diagnosed with schizophrenia who were followed up in the psychotic disorders outpatient clinic of Selçuk University Faculty of Medicine were included in the study. Neutrophil, lymphocyte, platelet and monocyte counts and HDL values were obtained retrospectively from blood tests. NLR, TLR, MLO, MHO and SII were calculated. The study approved by the ethics committee of Selçuk University Faculty of Medicine.

**Results:** 45.3% of the patients were female ( $n = 92$ ); the mean age was  $45.8 \pm 14.0$ . The average number of hospitalizations was  $3.0 \pm 2.7$  years; the mean disease duration was  $17.0 \pm 9.6$  years. 56.7% ( $n=115$ ) use long-acting antipsychotic treatment, 21% ( $n=43$ ) use monthly paliperidone long-acting (PP1M) treatment, and 14.8% ( $n=30$ ) use 3-month paliperidone long-acting (PP3M) treatment. No significant difference was observed in NLR, TLR, MLR, MHO and SII values between individuals using and not using long-acting antipsychotics. However, a significant difference in NLR value was observed between PP1M and PP3M treatment ( $p = 0.039$ ). Oral antipsychotic use was 71% ( $n=137$ ), 19% ( $n=38$ ) used clozapine monotherapy, and 25% ( $n=51$ ) used non-clozapine oral monotherapy. No significant difference was detected in inflammatory markers between clozapine monotherapy and other oral monotherapies.

**Conclusions:** According to our findings, NLR levels in patients diagnosed with schizophrenia were found to be significantly higher in those using PP1M treatment compared to those using PP3M. This finding can be interpreted in favor of the fact that PP3M contributes to the reduction of inflammation due to its longer duration of action compared to PP1M. It is thought that schizophrenia progresses through inflammatory processes and antipsychotic treatments play a role in anti-inflammation. It is envisaged that future studies may be helpful in evaluating the onset, exacerbation and remission periods of the disease, including treatment doses and durations, and revealing the relationship between inflammatory markers and schizophrenia disease and the effects of antipsychotic treatments on inflammatory markers such as NLR, TLR, MLR, MHO and SII.

**Disclosure of Interest:** None Declared

## EPP0179

### Machine Learning Analysis of Artistic Characteristics for Schizophrenia Classification

K. Vasilchenko<sup>1\*</sup>, A. Leonova<sup>2</sup>, E. Kuznetsova<sup>3</sup>, P. Zdanovich<sup>3</sup> and H. Keren<sup>1</sup>

<sup>1</sup>Human Artificial Control Keren Lab, Bar-Ilan University, Safed, Israel; <sup>2</sup>Tyumen State Medical University, Tyumen and <sup>3</sup>Omsk State Medical University, Omsk, Russian Federation

\*Corresponding author.

doi: 10.1192/j.eurpsy.2024.383

**Introduction:** Schizophrenia is affecting multiple functions such as cognition, perception, emotion, and social behaviors, and it has also