

Research Article

Cite this article: Ding H, Yan Q, Zhang N, Gu Q, Tang Q, Lin B, Zou C (2024) Regional variations in epiphytic microbiota influence fermentation quality, microbial communities, and aerobic stability of Napier grass silage. *Animal Nutriomics* 1, e16, 1–10. <https://doi.org/10.1017/anr.2024.12>

Received: 29 February 2024

Revised: 14 June 2024

Accepted: 19 June 2024


Keywords:

Napier grass; fermentation quality; silage; microbial community

Corresponding author: Caixia Zou;

Email: zou.cx@gxu.edu.cn

Regional variations in epiphytic microbiota influence fermentation quality, microbial communities, and aerobic stability of Napier grass silage

Hao Ding^{1,2}, Qi Yan^{1,2}, Nanji Zhang^{1,2}, Qichao Gu^{1,2}, Qingfeng Tang^{1,2}, Bo Lin^{1,2} and Caixia Zou^{1,2} 

¹College of Animal Science and Technology, Guangxi University, Nanning, China and ²Guangxi Key Laboratory of Animal Breeding, Disease Control and Prevention, Nanning, China

Abstract

Species of epiphytic microbiota are closely associated with the fermentation performance of natural forage silage. This study aimed to evaluate the dynamic microbial communities, fermentation parameters, and aerobic stability of Napier grass silage from the same variety and growth period but harvested from three different regions (NGP1, NGP2, and NGP3). After 60 days of ensiling, triplicate silos were opened for sampling and testing aerobic stability. The epiphytic microbiota with higher relative abundances in fresh Napier grass (NGP1, NGP2, and NGP3) were *Weissella*, *Enterobacter*, and *Lactococcus*, respectively. After 60 days of ensiling, NGP3 exhibited higher fermentation quality, indicated by higher lactic acid (LA) concentration and lower pH than that of NGP1 and NGP2. The $\text{NH}_3\text{-N}$ content of all treatments was lower than 100 g/kg total nitrogen. Compared with NGP1 and NGP2 silage, NGP3 silage exhibited a sharp rise in pH and LA consumption during air exposure. After 7 days of air exposure, NGP3 had higher ethanol concentrations and pH. *Ruminiclostridium_5*, *Pediococcus*, and *Lactobacillus* predominated in NGP1, NGP2, and NGP3 silages, respectively, whereas *Candida* and *Monascus* predominated in air-exposed NGP3 silage. The bacterial co-occurrence networks from fresh samples to ensiling and air exposure became more complex; however, NGP3 had a higher negative correlation with co-occurrence after air exposure. Different regions had significant effects on the fermentation patterns, bacterial communities, and aerobic stability of Napier grass silage. This was mainly due to variable epiphytic microbiota. Higher fermentation quality of Napier grass silage may also result in accelerated spoilage due to air exposure. *Candida* and *Monascus* were primarily responsible for the lower dry matter recovery and higher ethanol contents and air exposure spoilage of Napier grass silage.

Introduction

Napier grass (*Pennisetum purpureum*) is a perennial tropical grass and is considered one of the most important forage for ruminant production (Guan et al. 2020). Its highly efficient C4 photosynthetic pathway enables fast growth and high biomass yields. Similar to other tropical forage, Napier grass is cultivated in tropical and sub-tropical areas such as southern China (Dong et al. 2022a). The climate of these areas is characterized by coinciding rainy and hot seasons, enabling seasonal growth and harvest of Napier grass (Du et al. 2024). Therefore, storing Napier grass biomass is an important means of maintaining the supply feed for ruminant livestock.

Ensiling can preserve green forage nutrients in a long-term and stable manner because of its anaerobic conditions, lactic acid (LA) production via water-soluble carbohydrate (WSC) fermentation by LA bacteria, and acidic environment that inhibits the growth of undesirable microorganisms (Muraro et al. 2021b). The fermentation quality of silage is influenced by environmental conditions, chemical composition, and epiphytic microorganisms of forage (Zhao et al. 2023). Regarding microorganisms, even if forage is harvested on the same day, the quality of fermentation can be affected by the epiphytic microorganisms of the forage (Dong et al. 2022b). Dong et al. (2022a) reported that the time of harvest has an effect, as Napier grass harvested in the afternoon results in poor silage fermentation quality, mainly due to differences in the epiphytic microorganisms of the forage. Epiphytic microbial communities of forage are the source of microorganisms in natural silage (Zhao et al. 2021). Microbial communities in high-quality fermentation silage are dominated by LA bacteria, whereas silage aerobic stability is associated with fungi (molds and yeasts) (Guan et al. 2020). Therefore, analyzing the dynamics of microbial community structure during the process from forage

© The Author(s), 2024. Published by Cambridge University Press on behalf of Zhejiang University and Zhejiang University Press. This is an Open Access article, distributed under the terms of the Creative Commons Attribution licence (<http://creativecommons.org/licenses/by/4.0>), which permits unrestricted re-use, distribution and reproduction, provided the original article is properly cited.

to ensiling to air exposure of silage is essential to better understand the fermentation profiles of Napier grass.

However, a systematic microbial analysis of Napier grass silage remains to be reported. We hypothesize that the same species of Napier grass at the same period of growth may still exhibit different epiphytic microbial communities due to regional factors, further leading to variable fermentation quality of Napier grass silage. To test our hypothesis, Napier grass cultivated in three regions was harvested for silage during the same growth period. This study investigated the fermentation quality, aerobic stability, and microbial community structure of Napier grass silage from three regions. The results provide a reference for analyzing the microbial community structure and production of silage of high fermentation quality.

Materials and methods

Silage preparation

The Napier grass (*Pennisetum purpureum* Schum.) used in this study was cultivated in three areas in Nanning City, Guangxi Province, China. The sampling locations were Guangxi Xingtamin Agricultural Company (22°68'N, 108°01'E; NGP1), the experimental farm of Guangxi University (22°83'N, 108°29'E; NGP2), and Guangxi Buffalo Breeding Stock Farm (22°89'N, 108°35'E; NGP3). Napier grass was manually harvested at the first cutting and maturity stage, leaving a stubble of approximately 10 cm on July 15, 2021. After harvest, Napier grass from various regions was immediately chopped into pieces 2–3 cm in length with a forage cutter (model zfd5570, Zheng Feng Machinery Company, China). First, the stems and leaves of chopped Napier grass were mixed thoroughly. Then, 2 kg of the chopped Napier grass was weighed using an electronic scale, after which compacted grass was placed into 2.5 L laboratory silos layer by layer using a wooden stick. The silos were stored at ambient temperature (25 ± 2.5°C) after being sealed with plastic cover and plastic tape. Four silo replicates from each location (NGP1, NGP2, and NGP3) were opened after 60 days of ensiling to assess chemical composition, microbial populations, and aerobic stability.

Sample preparation and chemical analyses

After 60 days of ensiling, the silage from each silo was emptied into a clean plastic basin and divided into three sub-samples. The first sub-sample (300 g) was oven-dried for 72 h at 65°C and then used to determine air-dry matter. The dried samples were ground and passed through a 1 mm sieve to determine the nutritional composition of Napier grass silage. The neutral detergent fiber (NDF) and acid detergent fiber (ADF) of Napier grass were determined with a fiber analyzer (ANKOM Technology, Macedon, NY, USA) according to the method described by Van Soest *et al.* (1991). Total nitrogen of Napier grass was determined with a Kjeldahl apparatus (Kjeltec 8200; FOSS, Sweden) using the Kjeldahl method, and crude protein content was calculated by multiplying total nitrogen by 6.25 (Krishnamoorthy *et al.* 1982). WSC content was analyzed with anthrone sulfuric acid colorimetry (Krishnamoorthy *et al.* 1982).

The second sub-sample (20 g) was immersed in distilled water (120 mL) at 4°C for 24 h, and then the solution was filtered through filter paper and two layers of gauze to obtain the filtrate. The filtrate was used to determine organic acids, ammonia-N (NH₃-N) contents, and pH according to the specific procedure employed

by Gu *et al.* (2023). The pH of the filtrate was measured with an electrode pH meter (HANNA pH 211, Hanna Instruments, Padova, Italy). The NH₃-N content was measured with the phenol-hypochlorite reaction using the method of Broderick and Kang (1980). The contents of ethanol, LA, and acetic, propionic, and butyric acid were determined by gas chromatography (Agilent 1260; Agilent Technologies, Germany) described by Zhang *et al.* (2019). The last sub-sample was used to determine aerobic stability and for microbiological analysis.

Aerobic stability test

The aerobic stability of Napier grass silage was tested using the same method used by Nishino and Touno (2005). A Napier grass silage sample (1 kg) from each silo was loosely filled into a plastic bucket, covered with two layers of gauze, and left at room temperature (25 ± 2°C). After 1, 3, 5, and 7 days of air exposure, silage samples were thoroughly mixed and sub-sampled for analyses of pH, organic components, ethanol, and microbial communities.

Microbial community analyses

To analyze the epiphytic microbial communities of fresh, silage, and air-exposed silage samples of Napier grass, microbial DNA extraction was conducted according to the methods of Zhang *et al.* (2019). Microbial DNA was sent to Huada Genome Sequencing Company (Shenzhen, China) for 16S rRNA and ITS-1 gene amplicon sequencing on an Illumina MiSeq PE250 platform. The universal primers 338F (5'-ACTCCTACGGGAGGCAGCAG-3') and 806R (5'-GGACTACHVGGGTWTCTAAT3') were used to amplify sequencing of the bacterial 16S rRNA V3–V4 regions. Amplification sequencing of fungal ITS was performed using the primers ITS1F (5'-CTTGGTCATTTAGAGGAAGTAA-3') and ITS2-2043R (5'-GCTGCGTTCCTCATCGATGC-3'). Next, purified Polymerase Chain Reaction (PCR) amplicons were paired-end sequenced using the Illumina MiSeq PE300 platform (Illumina Inc., San Diego, CA, USA). Paired-end reads were merged and checked by FLASH (Version 1.2.11), and the primers were trimmed using QIIME II. Operation taxonomic units were done using open reference clustered with a 97% similarity cut-off using UPARSE (Version 7.1; <http://drive5.com/uparse/>), and the chimeric sequences were identified and removed using Amplicon Sequence Variant (ASV). Alpha-diversity estimates and beta-diversity evaluation, based on principal coordinate analysis (PCoA), were performed using the Phyloseq and Vegan packages in R. Bacterial and fungal communities at the phylum and genus levels were analyzed based on the Silva database with a confidence threshold of 70%. The high-throughput sequencing data were analyzed on the free online platform of Majorbio I-Sanger Cloud Platform (www.i-sanger.com).

Statistical analysis

Statistical Packages for Social Science software (IBM SPSS 20 for Windows) was employed for the statistical analyses. One-way analysis of variance was performed on each parameter of the fresh Napier grass and silage, and a general linear model was used for a two-way analysis of variance for silage air exposure days, different sampling locations, and their interaction. The different sample means were compared for significance by Duncan's multiple range method, and significance was declared at $P < 0.05$. The PICRUST2 functional prediction and co-occurrence network analyses of

bacterial communities were predicted by the Cloud Platform (bioincloud.tech). The data were visualized using GraphPad Prism 9.0 software.

Results and discussion

Chemical characteristics of fresh and ensiled Napier grass

The chemical characteristics of fresh and silage Napier grass are shown in Table 1. There were significant differences ($P < 0.05$) in the DM, NDF, ADF, and WSC contents of fresh Napier grass samples from different sampling locations. WSCs are one of the key factors determining the quality of silage fermentation, as they can provide fermentation substrates for epiphytic microorganisms (Gomes et al. 2021). In this study, although the Napier grass from the three sampling areas was of the same cultivar and growth period, it contained significantly different carbohydrate contents. These differences can be attributed to variable soil fertility and water levels, indicating that variations in cultivated land can affect the chemical composition of forage (Kung et al. 2018). LA bacteria are critical beneficial microorganisms during ensiling, as they can inhibit spoilage microorganisms by fermenting WSCs to produce LA. LA has a lower pKa value compared with other organic acids such as acetic and propionic acid, which means that LA is the most effective organic acid for decreasing pH during ensiling (Yin et al. 2023). Thus, the lowest pH of NP3 silage is related to the higher carbohydrate content of fresh Napier grass. All silage samples had lower DM weight and WSC and crude protein content compared with fresh samples, and this can be attributed to plant cell respiration during the early ensiling stages and microbial fermentation during later ensiling stages (Zhang et al. 2023a). After ensiling, NDF and ADF content increased, which could be explained by the loss of DM, including crude protein and WSCs. Lignocellulose is not easily degraded by microorganisms during natural ensiling, resulting in increased relative contents of neutral and ADF, as consistently reported by Zhao et al. (2019) and Li et al. (2022). Appropriate moisture and DM content are crucial for high-quality ensiling. Insufficient moisture levels inhibit the growth of LA bacteria, whereas excessive amounts of water can lead to the fermentation of spoilage microorganisms (e.g., clostridial or mycotic fermentation) resulting in loss of crude protein and WSCs (Wang et al. 2022a). Thus, the highest pH value (5.19) of NGP1 may be due to the highest moisture levels of the fresh samples (81.27%).

Fermentation characteristics of Napier grass silage before and after air exposure

The air exposure days, sampling location, and their interaction had significant ($P < 0.05$) effects on the fermentation of Napier grass silage (Table 2). After ensiling, the pH of NGP3 (3.43) was significantly lower ($P < 0.05$) than that of NGP2 (4.66) and NGP1 (5.19). The main reason for this is related to the high WSC content in NGP3, which provided sufficient substrate for LA production by LA bacteria and thus lowered the pH (Muck et al. 2018). During air exposure, pH mostly increased, and LA concentration decreased in all groups. This is due to LA assimilation that is used by surface aerobic spoilage epiphytic microorganisms (yeasts and molds) to propagate under aerobic conditions (Borreani et al. 2018). Interestingly, NGP3 showed a dramatic increase in pH (from 3.43 to 7.41) and a decrease in LA concentration (from 58.64 to 7.67 g/kg DM) compared with NGP2 (from 4.66 to 5.30 and 12.87 to 5.74 g/kg DM) and NGP1 (from 5.19 to 5.69 and 8.24

Table 1. Chemical components of Napier grass from different areas before and after ensiling

Items	Grass status	Sampling location			SEM	P-value
		NGP1	NGP2	NGP3		
DM (g/kg FW)	Fresh	18.73 ^b	24.20 ^a	23.03 ^a	0.852	0.001
	Silage	15.11 ^a	20.56 ^b	22.69 ^a	1.197	<0.001
NDF (g/kg DM)	Fresh	664.46 ^a	647.24 ^b	633.27 ^a	4.595	<0.001
	Silage	671.82 ^b	648.36 ^a	683.68 ^a	5.385	<0.001
ADF (g/kg DM)	Fresh	401.63 ^a	365.20 ^b	357.19 ^a	6.889	<0.001
	Silage	439.73 ^a	396.24 ^b	394.63 ^b	8.682	0.021
CP (g/kg DM)	Fresh	64.00 ^{ab}	59.73 ^b	67.74 ^a	1.481	0.059
	Silage	47.31 ^a	57.41 ^b	59.02 ^a	1.840	<0.001
WSC (g/kg DM)	Fresh	38.26 ^a	68.52 ^b	97.27 ^a	13.131	<0.001
	Silage	10.86 ^a	23.74 ^b	57.37 ^a	3.296	<0.001
pH	Fresh	7.03	7.02	7.03	0.013	0.948
	Silage	5.19 ^a	4.66 ^b	3.43 ^a	0.260	<0.001
BC (mEq/kg DM)	Fresh	161.74 ^b	159.4 ^b	213.66 ^a	8.82	<0.01
LAB (log ₁₀ CFU/g FW)	Fresh	6.76 ^a	5.98 ^b	5.54 ^b	0.72	<0.01
Yeasts (log ₁₀ CFU/g FW)	Fresh	6.62 ^a	5.58 ^b	5.08 ^b	0.31	0.04
Molds (log ₁₀ CFU/g FW)	Fresh	3.71	4.00	3.49	0.17	0.76
Enterobacteria (log ₁₀ CFU/g FW)	Fresh	5.43 ^b	6.23 ^a	4.86 ^b	0.26	0.01

^{a-c} Means with different lowercase letters in the same row differ at $P < 0.05$.

Note: FW: Fresh weight; DM: dry matter; NDF: neutral detergent fiber; ADF: acid detergent fiber; CP: crude protein; WSC: water-soluble carbohydrate; LAB: lactic acid bacteria; BC: buffering capacity; Fresh: Napier grass before ensiling.

to 6.38 g/kg DM) during 7 days of air exposure. This indicates that silage quality cannot be judged unilaterally from post-silage pH and LA concentration. The concentrations of acetic and propionic acid of NGP1 were significantly higher ($P < 0.05$) than those of NGP2 and NGP3 after ensiling. During air exposure, the acetic and propionic acid concentrations showed an increasing tendency, and the concentrations of acetic and propionic acid of NGP1 remained consistently higher than those of NGP2 and NGP3. Acetic acid can improve the aerobic stability of silage by inhibiting the activity of aerobic spoilage microorganisms such as yeast, mold, and *Clostridium* (Du et al. 2021). This explains why the pH of NGP2 did not significantly decrease, possibly because acetic acid was maintained at a higher concentration during air exposure. A previous study reported that acetic acid is mainly produced by *Acetobacter aceti* and heterotrophic fermentation of LA bacteria in silage (Bai et al. 2021). The acetic acid concentration

Table 2. Fermentation characteristics of Napier grass silage from different regions and during air exposure

Items	Place	Air exposure days					SEM	P-value		
		0	1	3	5	7		D	P	D*P
pH	NGP1	5.19 ^{Ac}	5.22 ^{Ac}	5.21 ^{Bc}	5.51 ^{Cb}	5.69 ^{Ba}	0.158	<0.001	<0.001	<0.001
	NGP2	4.66 ^{Be}	4.75 ^{Bd}	4.82 ^{Cc}	5.01 ^{Bb}	5.30 ^{Ca}				
	NGP3	3.43 ^{Ce}	3.85 ^{Cd}	6.80 ^{Ac}	7.04 ^{Ab}	7.41 ^{Aa}				
Lactic acid g/kg DM	NGP1	8.24 ^{Ca}	7.65 ^{Bb}	6.98 ^{Bc}	7.00 ^{Bc}	6.38 ^{Bd}	2.946	<0.001	<0.001	<0.001
	NGP2	12.87 ^{Ba}	5.32 ^{Bb}	5.53 ^{Cb}	6.05 ^{Bb}	5.74 ^{Bb}				
	NGP3	58.64 ^{Aa}	52.22 ^{Ab}	13.13 ^{Ac}	10.05 ^{Ad}	7.67 ^{Ad}				
Acetic acid g/kg DM	NGP1	30.8 ^{Ae}	33.77 ^{Ad}	36.46 ^{Ac}	41.07 ^{Ab}	45.7 ^{Aa}	1.766	<0.001	<0.001	<0.001
	NGP2	13.33 ^{Bb}	15.53 ^{Bb}	18.1 ^{Ba}	18.34 ^{Ba}	19.07 ^{Ba}				
	NGP3	7.19 ^{Cd}	9.84 ^{Cc}	13.00 ^{Cb}	14.4 ^{Cab}	15.70 ^{Ca}				
Propionic acid g/kg DM	NGP1	11.34 ^{Ad}	16.26 ^{Ac}	17.21 ^{Ac}	20.6 ^{Ab}	22.82 ^{Aa}	1.207	<0.001	<0.001	<0.001
	NGP2	2.87 ^{Bbc}	3.3 ^{Bb}	3.02 ^{Bbc}	2.71 ^{Bc}	4.05 ^{Ba}				
	NGP3	ND ^{Cb}	ND ^{Cb}	ND ^{Cb}	ND ^{Cb}	0.18 ^{Ca}				
Propionic acid g/kg DM	NGP1	3.49 ^{Ba}	1.69 ^{Bb}	1.3 ^{Bb}	0.65 ^{Bc}	0.15 ^{Ac}	0.235	<0.001	<0.001	<0.001
	NGP2	4.07 ^{Aa}	4.03 ^{Aa}	3.33 ^{Ab}	1.63 ^{Ac}	0.03 ^{Bd}				
	NGP3	0.06 ^{Ca}	ND ^{Cb}	ND ^{Cb}	ND ^{Cb}	ND ^{Cb}				
NH ₃ -N g/kg TN	NGP1	67.66 ^{Aa}	62.14 ^{Aa}	51.31 ^{Ab}	62.42 ^{Aa}	71.93 ^{Aa}	3.509	<0.001	<0.001	<0.001
	NGP2	24.41 ^{Bc}	23.32 ^{Bc}	25.69 ^{Bbc}	28.07 ^{Bab}	29.91 ^{Ba}				
	NGP3	5.52 ^{Cc}	5.51 ^{Cc}	7.97 ^{Cb}	11.61 ^{Ca}	12.61 ^{Ca}				
Ethanol g/kg DM	NGP1	9.29 ^{Aa}	8.85 ^{Ab}	8.54 ^{Ac}	7.73 ^{Cd}	6.25 ^{Be}	0.353	<0.001	<0.001	<0.001
	NGP2	8.32 ^{Ba}	6.39 ^{Cb}	5.83 ^{Bc}	4.34 ^{Bd}	0.70 ^{Ce}				
	NGP3	8.71 ^{Cc}	8.56 ^{Bd}	9.02 ^{Ab}	10.01 ^{Aa}	8.97 ^{Ab}				

^{a-e}Means with different lowercase letters in the same row differ at $P < 0.05$.

^{A-C}Means with different uppercase letters in the same arrangement differ at $P < 0.05$.

Note: DM: dry matter; NDF: neutral detergent fiber; ADF: acid detergent fiber; CP: crude protein; WSC: water-soluble carbohydrate; LAB: lactic acid bacteria; BC: buffering capacity; TN: total nitrogen; DM: dry matter.

of NGP1 was significantly higher than that of NGP2 and NGP3, which may be related to variations in epiphytic microbiota and the fermentation type of LA bacteria of Napier grass silage (Du et al. 2024).

Butyric acid and NH₃-N are mainly produced by *Clostridium* fermentation of WSC and crude protein, leading to nutrient loss in silage (Li et al. 2020). However, *Clostridium* is not acid-resistant or anaerobic, and thus its activity is generally inhibited at low pH. NGP1 had significantly higher concentrations of butyric acid and ammonia nitrogen than those of NGP2 and NGP3, which may be explained by higher pH values and insufficient LA fermentation after 60 days of ensiling. The NH₃-N concentration of NGP3 was significantly ($P < 0.05$) lower than that of NGP2 and NGP1 after silage. The NH₃-N concentration gradually increased with air exposure days, and NGP1 had significantly ($P < 0.05$) higher NH₃-N concentration than that of NGP2 and NGP3 after 7 days of air exposure. The increased NH₃-N concentration in all samples indicates the reactivation of aerobic *Clostridium*, leading to nutrient loss during air exposure. A previous study reported that yeast is the main cause of silage spoilage during air exposure because it can ferment LA and WSC. This increases pH and temperature, which might improve the growth of undesirable microorganisms, such as *Escherichia coli*, *Listeria*, and *Clostridium*

(Borreani et al. 2019). During air exposure, ethanol is mainly produced by yeast in silage. The ethanol concentration of NGP1 and NGP2 was significantly lower than that of NGP3 after 7 days of air exposure, which may be due to their appropriate concentrations of acetic acid and LA. Kung et al. (2018) indicated that moderate acetic acid concentration in silage is acceptable, as it inhibits yeast viability and thus improves aerobic stability. All fermentation parameters indicate that microorganisms are also a determining factor for silage fermentation quality and aerobic stability, and thus it is necessary to investigate the epiphytic microbiota of Napier grass silage.

Microbial diversity of fresh ensiled Napier grass and after air exposure

The alpha diversity of the bacterial and fungal communities in fresh ensiled Napier grass and after air exposure is illustrated in Fig. 1. All silage samples had lower alpha diversity indices compared with fresh samples. This was mainly due to the anaerobic and acidic conditions that inhibit the growth of some microorganisms after ensiling, thereby decreasing microbial community diversity (Oliveira et al. 2017). The discrepancy in microbial species from fresh samples from different areas could be ascribed to climate

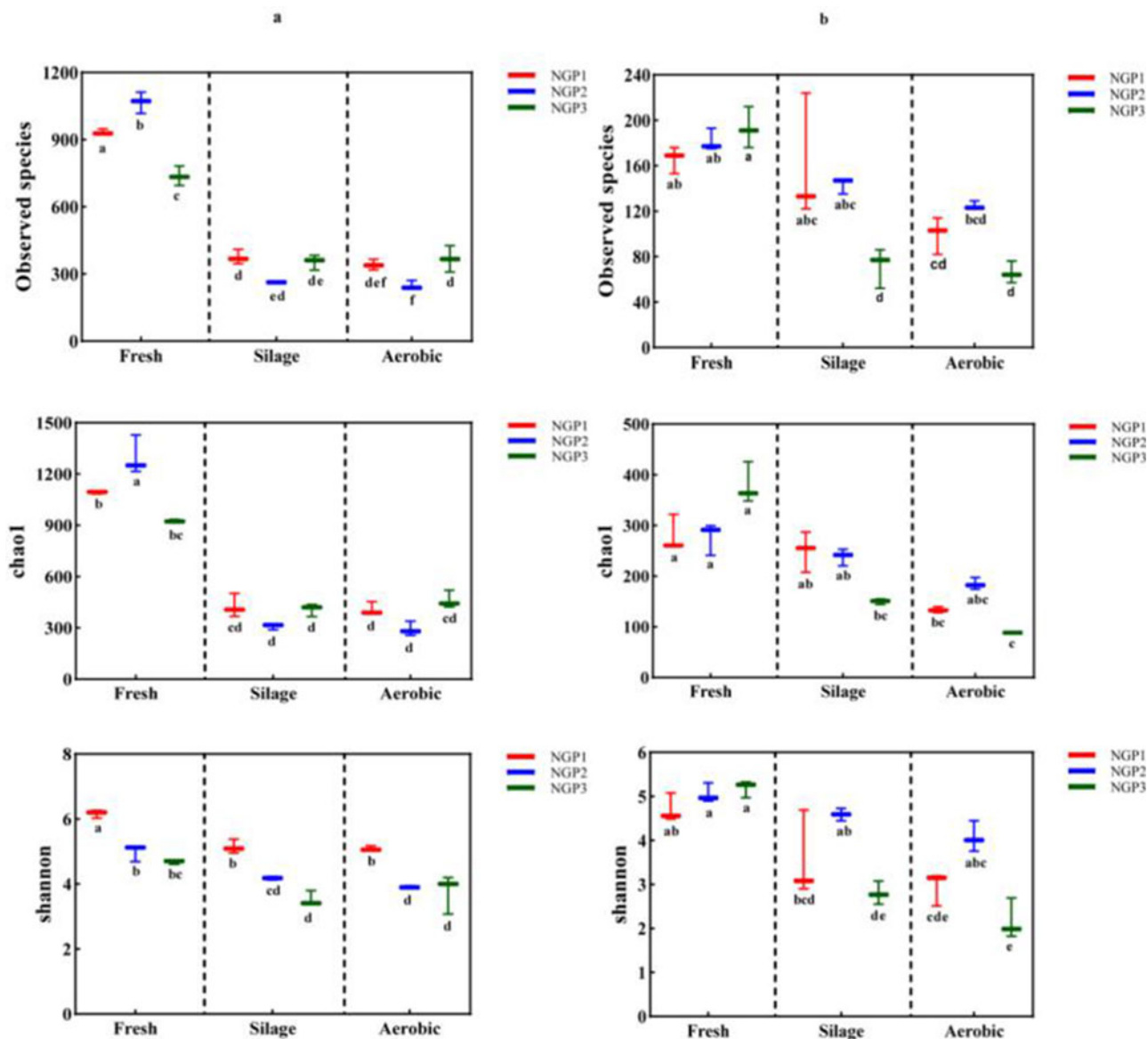


Figure 1. The alpha diversity indices of bacterial (a) and fungal (b) communities in fresh, silage, and air-exposed Napier grass samples.

conditions and chemical compositions of Napier grass (Muraro et al. 2021a). Guan et al. (2020) and Dong et al. (2022b) reported that the epiphytic microorganisms of Napier grass harvested at different developmental stages or at different times of the day varied due to differences in forage chemical composition and climate (e.g., light, temperature, and moisture).

The beta diversity of the microbial community in fresh ensiled Napier grass and after air exposure is illustrated by the PCoA plot (Fig. 2). A clear distinction can be observed between the fresh ensiled Napier grass and the grass after air exposure. The PCoA1 axis explained 86.51% and 76.6% of the difference in bacteria and fungi, respectively. This indicated that the variance of the original epiphytic microbial communities in forage may not change due to ensiling, which could further lead to different fermentation qualities in silage samples. This indicated that the variance of original epiphytic microbial communities in forage may not change due to ensiling, which could further lead to different fermentation qualities of silage samples.

Microbial communities of fresh ensiled Napier grass and after air exposure

The microbial abundance of fresh ensiled or air-exposed samples is illustrated at the phylum and genus levels in Fig. 3. Firmicutes and Proteobacteria were predominant in all samples (Fig. 3a). Firmicutes and Proteobacteria played important roles in silage. Under anaerobic conditions, Firmicutes (e.g., *Lactobacillus*, *Weissella*, and *Lactococcus*) can hydrolyze WSC to produce volatile fatty acids that decrease pH; however, Proteobacteria (*Pantoea*, *Pseudomonas*, and *Enterobacter*) are not resistant to acids, and their growth is inhibited under anaerobic conditions (McAllister et al. 2018). In this study, the abundance of Firmicutes and Proteobacteria increased and decreased, respectively, in all samples after ensiling, indicating that Firmicutes are more competitive than Proteobacteria during ensiling. The decrease in Proteobacteria abundance favors the improvement of silage nutrients and fermentation quality because Proteobacteria

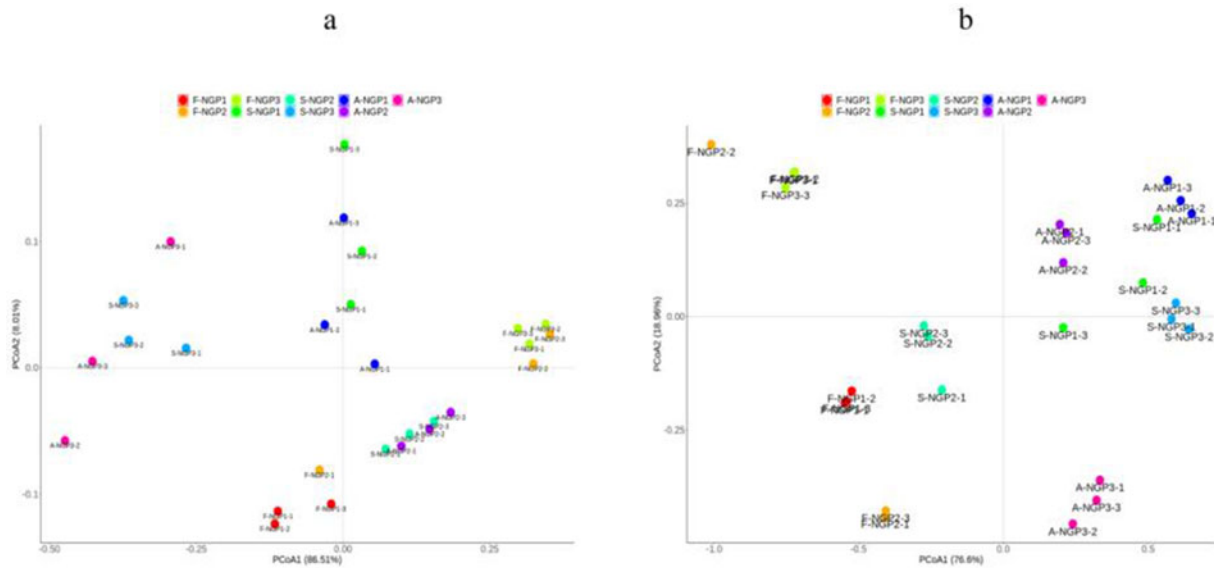


Figure 2. Principal coordinate analysis of bacteria (a) and fungi (b) from different regions after ensiling and after air exposure of Napier grass silage.

can accelerate carbon and nitrogen cycling during silage, decreasing DM (Borreani et al. 2018). In addition, the lower abundances of *Pantoea*, *Pseudomonas*, and *Enterobacter* in silage could prevent intestinal diseases in animals.

Lactococcus and *Lactobacillus* can use one molecule of glucose to produce two molecules of LA, which can rapidly acidify and decrease the pH of silage (Guo et al. 2023). In this study, the highest LA concentration and lowest pH in S-NGP3 may be attributed to the relatively high abundance of *Lactobacillus* and *Lactococcus*. High moisture levels (>80%) and lack of WSC can lead to inadequate fermentation by LA bacteria, preventing the decrease in pH to a suitable range and resulting in poor-quality silage fermentation (Zhang et al. 2023b). However, *Clostridium* can develop a competitive advantage under such conditions (Xu et al. 2023a), which explains the predominant abundance of *Ruminiclostridium_5* (42.35%) detected in S-NGP1. The prolonged presence of *Clostridium* during ensiling could accelerate WSC and crude protein degradation, decreasing WSC content and increasing $\text{NH}_3\text{-N}$ concentrations, as detected in NGP1. Yeasts and molds are considered the main microorganisms responsible for the deterioration of grass silages upon exposure to air because they can withstand organic acids better than most other microorganisms under aerobic conditions (Gallo et al. 2020). Moreover, they can oxidize organic acids and other chemical compositions of silage to produce ethanol and mycotoxins, thus contaminating silage (Bernardes et al. 2018). A-NGP3 had higher abundances of *Candida* (18.97%) and *Monascus* (63.98%) compared with NGP1 (6.58% and 4.57%) and NGP2 (8.11% and 4.03%). This may have caused the sharp increase in pH and rapid decrease in LA concentration of A-NGP3 during air exposure. This indicates that high LA concentration and low pH are not the only indicators of silage fermentation quality. The same conclusion was reported by Wang et al. (2019). Interestingly, *Meyerozyma* abundance predominated (>10%) in all silage and air-exposed samples but was lower (<1.06%) in the fresh samples. Few reports have discussed this phenomenon. Keshri et al. (2018) found a higher abundance (53.5%) of *Meyerozyma* in fresh samples that decreased after fermentation. Further research is needed to determine the effect of *Meyerozyma* on fermentation quality and the aerobic stabilization of forage silage.

Correlation analysis of fermentation parameters and microbial communities

The correlations between fermentation parameters and microbial communities of silage or air-exposed samples were analyzed using Spearman's correlation heatmaps (Fig. 4). The pH and $\text{NH}_3\text{-N}$ concentration was negatively correlated with *Lactococcus* (S-NGP3, $P < 0.05$). *Lactococcus* plays a crucial role in tropical forage silage (Oliveira et al. 2017). *Lactococcus* are homofermentative LA bacteria that can ferment 1 mol of glucose to produce 2 mol of LA (Okoye et al. 2023), which means that they ferment glucose more efficiently than heterofermentative LA bacteria. In S-NGP3, *Lactococcus* was positively correlated with LA concentration and negatively correlated with pH, which may underly the rapid production of LA. This was consistent with the lowest pH and highest LA concentration in S-NGP3 after ensiling. In A-NGP2, the positive correlation between ethanol and *Meyerozyma* may be due to the fact that *Meyerozyma* has anaerobic tolerance and can ferment WSC and VFA to produce ethanol in silage. Wang et al. (2023) reported that *Sphingomonas* causes hydrolysis of soluble protein in agricultural by-products and red clover silage. $\text{NH}_3\text{-N}$ was mainly produced by protein hydrolysis during silage (Benjamim Da Silva et al. 2024), thus the positive correlation between *Sphingomonas* and $\text{NH}_3\text{-N}$ in all silage samples. Acetic acid can inhibit fungal growth during air exposure to improve the aerobic stability of silage (Wang et al. 2023). Acetic acid was negatively correlated with *Candida* and *Monascus* in A-NGP3, which indicates that these species may play a pivotal role in promoting aerobic corruption of silage. Wang et al. (2022b) also found higher abundances of *Candida* and *Monascus* in whole-crop maize during air exposure.

Metabolic prediction and co-occurrence networks of bacterial communities

KEGG and co-occurrence networks can further illustrate microbial community metabolic pathways and interactions (Wang et al. 2022b). The relative abundances of epiphytic bacterial community KEGG level-1 and level-2 pathways were predicted by PICRUSt2 (Fig. 5). Metabolism was the dominant level-1 metabolic

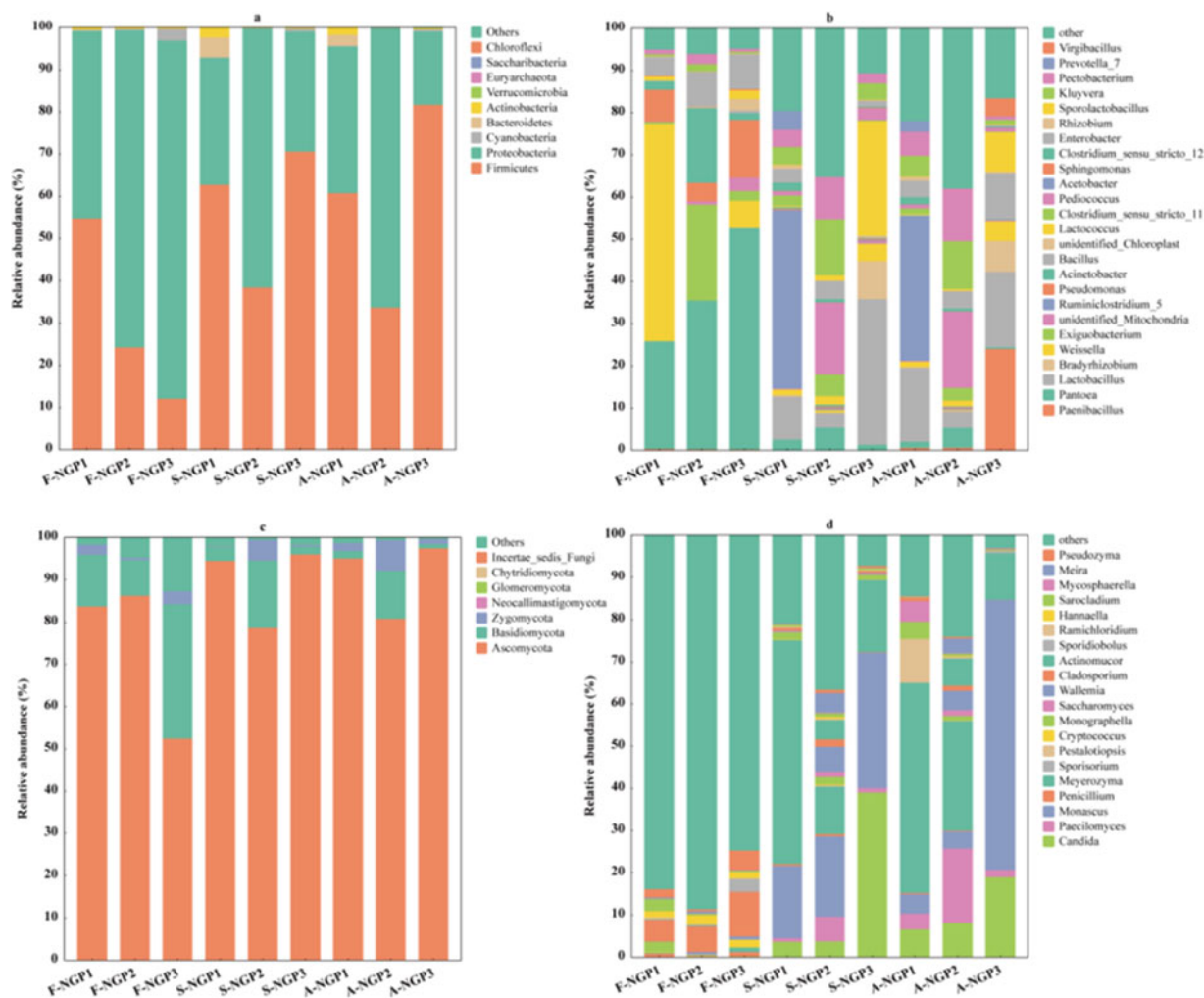


Figure 3. The relative abundances of bacterial and fungal communities of Napier grass from different regions after ensiling and after air exposure at the phylum level (a, c) and the genus level (b, d).

pathway (>70%) in all fresh, silage, and air-exposed samples. Carbohydrate metabolism, amino acid metabolism, metabolism of cofactors and vitamins, and metabolism of other amino acids were the main level-2 pathways, all of which belong to level-1 of metabolism with a relative abundance of more than 6%. Carbohydrate metabolism was the most abundant metabolic pathway and increased after ensiling and air exposure (11.01–11.55%), compared with fresh samples (10.35–10.38%). Carbohydrate metabolism was the predominant metabolic pathway, suggesting that carbohydrate metabolism is the primary pathway for sustaining metabolism (Xu et al. 2023a). Carbon metabolism pathways were increased after silage, probably due to the predominance of WSCs fermentation by LA bacteria (Du et al. 2024). Protein hydrolysis can increase amino acid metabolism and decrease the abundance of the main microorganisms involved in the nitrogen cycle after silage (Proteobacteria *Pseudomonas* and *Enterobacter*). These species may decrease amino acid metabolic pathways (Bai et al. 2022). In all silage and air-exposed samples, amino acid metabolism and chemical structure transformation maps of metabolic pathways were decreased compared with fresh samples.

The networks of bacterial communities in fresh, silage, and air-exposed samples are shown in Fig. 6. The raw materials

from different areas exhibited distinct co-occurrence patterns. Compared to fresh samples, silage and air-exposed samples exhibited more complex co-occurrence networks of bacterial communities. The silage sample S-NGP1 had more nodes and edges in bacterial networks (155) than S-NGP2 (96) and S-NGP3 (79). Additionally, the air-exposed sample A-NGP3 had a higher proportion of positive correlations (94.79%) than either A-NGP1 (58.62%) or A-NGP2 (47.42%). Zhao et al. (2022) analyzed the co-occurrence networks of the ten most abundant epiphytic microorganisms on the surface of sweet sorghum and found that the co-occurrence networks became simpler after silage. However, this study found that the co-occurrence networks of Napier grass epiphytic microorganisms became complex, probably because the top 20 microorganisms were selected for analysis in this study. Despite the decrease in microbial diversity after ensiling, the co-occurrence networks in S-NGP1 were more complex than those in S-NGP2 and S-NGP3. This may be due to the higher pH, which resulted in more active bacteria in S-NGP1. In A-NGP3, bacteria were found to have an extremely high ratio of positive co-occurrence network relationships (94.79%) compared with A-NGP2 (47.42%) and A-NGP1 (58.62%); this phenomenon has not been reported in previous studies. We hypothesize that the higher fermentation quality of

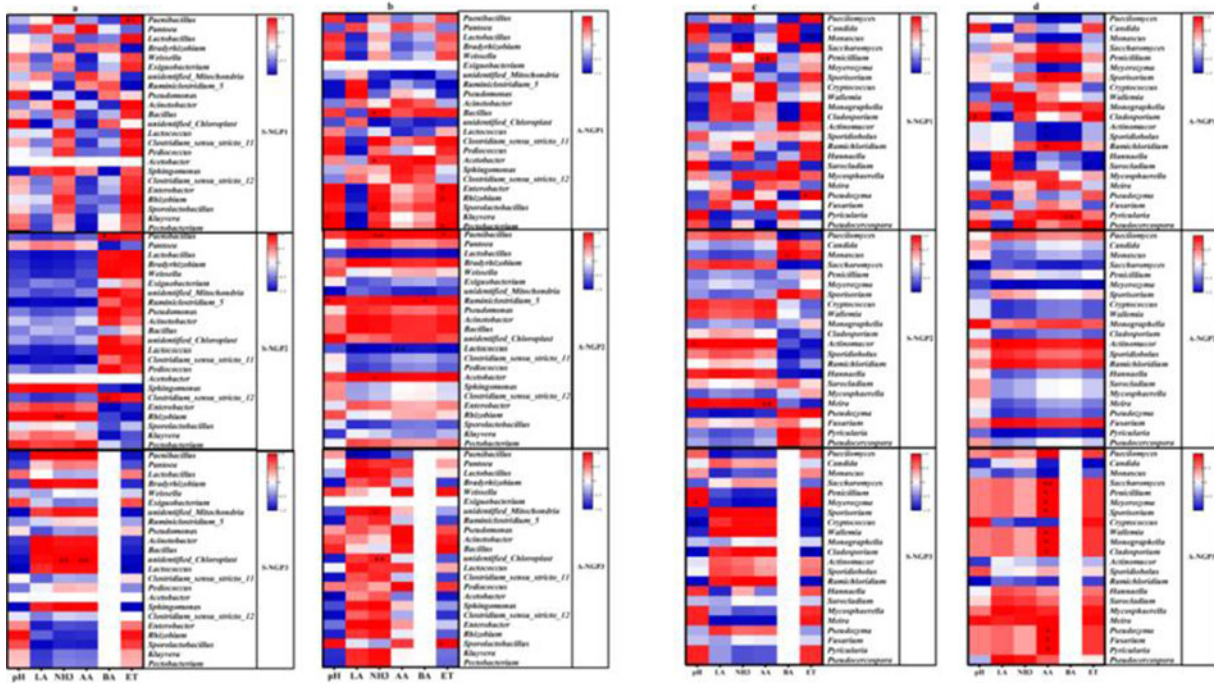


Figure 4. Correlation heatmaps of fermentation parameters and epiphytic bacterial (a, b) and fungal (c, d) microbiota (top 23 genera) in Napier grass silage and after air exposure. Red squares represent positive correlations ($0 < r < 1$), and blue squares represent negative correlations ($-1 < r < 0$). *: significant at $P < 0.05$; **: significant at $P < 0.01$.

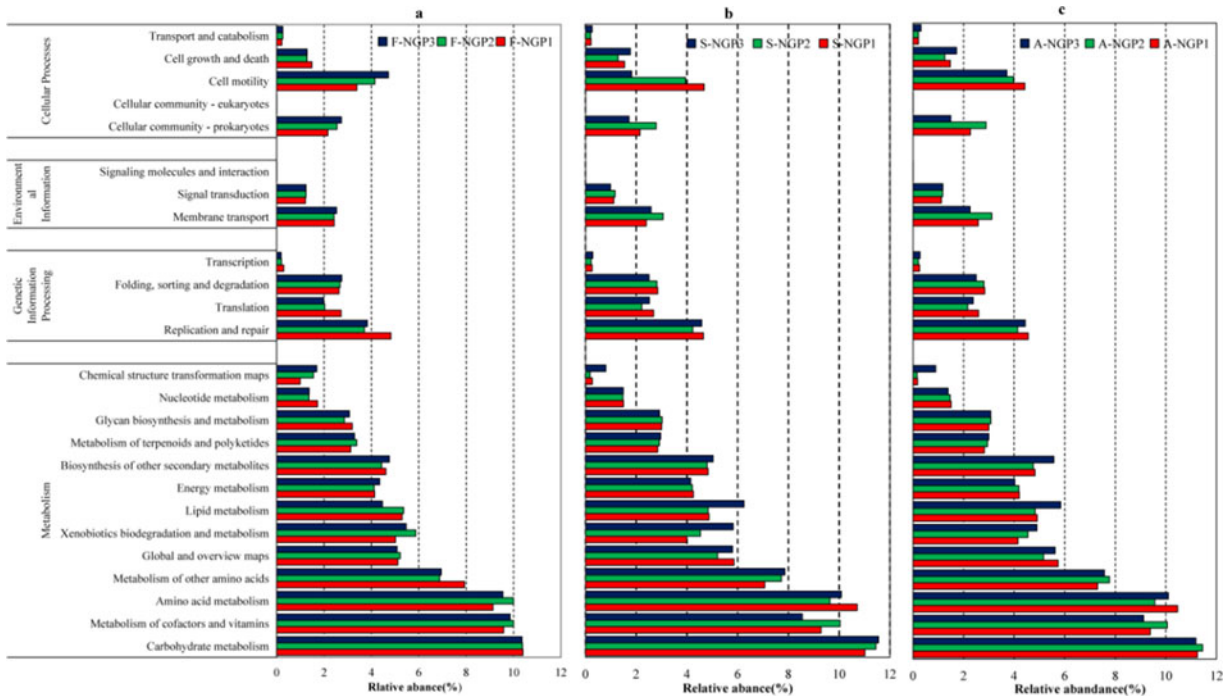


Figure 5. Changes of KEGG metabolic pathways on levels 1 and 2 obtained with PICRUSt2 from fresh, silage, and air-exposed Napier grass samples. KEGG, Kyoto Encyclopedia of Genes and Genomes.

NGP3 may be related to the fact that fermentation products, such as LA and WSCs, provide sufficient nutrients for bacteria, making them less competitive and more cooperative (Penagos-Tabares et al. 2023). Future studies are needed to further analyze this phenomenon.

Conclusion

This study analyzed the fermentation patterns, bacterial communities, and aerobic stability of Napier grass silage from various regions. The fermentation quality and aerobic stability of Napier

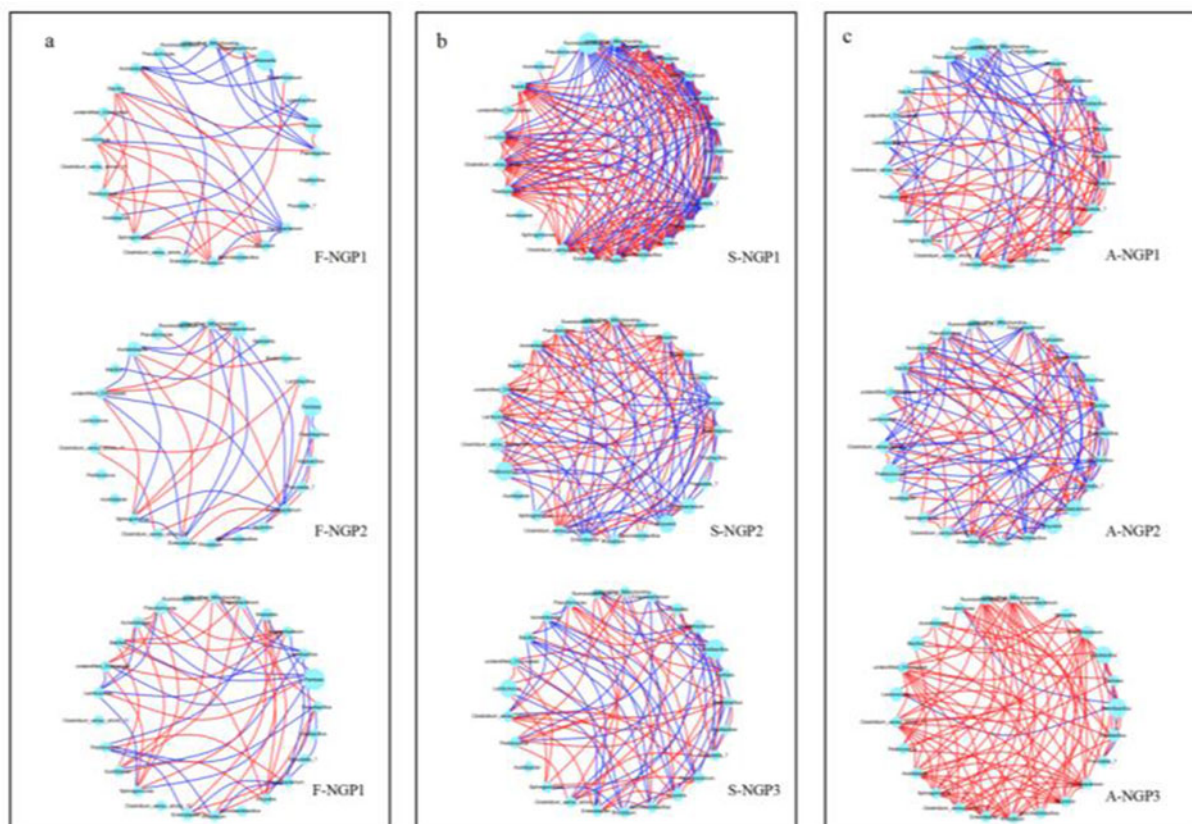


Figure 6. Co-occurrence network analyses of fresh, silage, and air-exposed samples of Napier grass from different regions. (a) Fresh samples; (b) silage samples; and (c) air-exposed samples. Nodes represent bacterial genera, and node sizes represent their relative abundance. The colors of the connecting lines between nodes represent positive correlations (red) and negative correlations (blue) of bacterial genera.

grass silage from different regions are driven by epiphytic microbiota. A high relative abundance of *Lactococcus* in the epiphytic microbiota of fresh Napier grass improves the fermentation quality of silage. In contrast, higher relative abundances of *Candida* and *Monascus* in Napier grass silage accelerate aerobic spoilage.

Data Availability Statement. All data generated or analyzed during this study are included in this published article.

Author contributions. HD: methodology, formal analysis, visualization, writing—original draft preparation. HD and QY: validation, methodology, software. NZ: investigation, formal analysis. QG and QT: methodology, visualization. CZ and BL: conceptualization, project administration, resources, data curation, supervision, funding acquisition, writing—review and editing. All authors read and approved the final manuscript.

Funding statement. This work was funded by the National Natural Science Foundation of China (Grant No.312360851) and National Key Research and Development Program of China [grant number 2022YFD1300602].

Conflict(s) of Interest. The authors declare that the research was conducted in the absence of any commercial or financial relationships that could be construed as a potential conflict of interest.

References

Bai J, Ding Z, Su R *et al.* (2022) Storage temperature is more effective than lactic acid bacteria inoculations in manipulating fermentation and bacterial community diversity, co-occurrence and functionality of the whole-plant corn silage. Han J, editor. *Microbiology Spectrum* **10**, e00101–22.

- Bai Y, Rafiq MK, Li S *et al.* (2021) Biochar from pyrolyzed Tibetan Yak dung as a novel additive in ensiling sweet sorghum: An alternate to the hazardous use of Yak dung as a fuel in the home. *Journal of Hazardous Materials* **403**, 123647.
- Benjamim Da Silva É, Polukis SA, Smith ML *et al.* (2024) The use of *Lentilactobacillus buchneri* PJB1 and *Lactiplantibacillus plantarum* MTD1 on the ensiling of whole-plant corn silage, snaplage, and high-moisture corn. *Journal of Dairy Science* **107**, 883–901.
- Bernardes TF, Daniel JLP, Adesogan AT *et al.* (2018) Silage review: Unique challenges of silages made in hot and cold regions. *Journal of Dairy Science* **101**, 4001–4019.
- Borreani G, Ferrero E, Nucera D *et al.* (2019) Dairy farm management practices and the risk of contamination of tank milk from *Clostridium* spp. and *Paenibacillus* spp. spores in silage, total mixed ration, dairy cow feces, and raw milk. *Journal of Dairy Science* **102**, 8273–8289.
- Borreani G, Tabacco E, Schmidt RJ *et al.* (2018) Silage review: Factors affecting dry matter and quality losses in silages. *Journal of Dairy Science* **101**, 3952–3979.
- Broderick GA and Kang JH (1980) Automated simultaneous determination of ammonia and total amino acids in ruminal fluid and in vitro media. *Journal of Dairy Science* **63**, 64–75.
- Dong Z, Li J, Wang S *et al.* (2022a) Characterization of bacterial community and fermentation parameters during ensiling of Napier grasses harvested at various times within a day. *Animal Feed Science and Technology* **291**, 115380.
- Dong Z, Li J, Wang S *et al.* (2022b) Gamma-ray irradiation and microbiota transplantation to separate the effects of chemical and microbial diurnal variations on the fermentation characteristics and bacterial community of Napier grass silage. *Journal of the Science of Food & Agriculture* **102**, 4322–4332.
- Du Z, Sun L, Chen C *et al.* (2021) Exploring microbial community structure and metabolic gene clusters during silage fermentation of paper mulberry,

- a high-protein woody plant. *Animal Feed Science and Technology* **275**, 114766.
- Du Z, Yamasaki S, Oya T *et al.* (2024) Microbial network and fermentation modulation of Napier grass and sugarcane top silage in southern Africa. Han J, editor. *Microbiology Spectrum* **12**, e03032–23.
- Gallo A, Minuti A, Bani P *et al.* (2020) A mycotoxin-deactivating feed additive counteracts the adverse effects of regular levels of *Fusarium* mycotoxins in dairy cows. *Journal of Dairy Science* **103**, 11314–11331.
- Gomes ALM, Bueno AVI, Osmari MP *et al.* (2021) Effects of obligate heterofermentative lactic acid bacteria alone or in combination on the conservation of sugarcane silage. *Frontiers In Microbiology* **12**, 643879.
- Gu Q, Zhang L, Zhou X *et al.* (2023) Effects of sugarcane variety and nitrogen application level on the quality and aerobic stability of sugarcane tops silage. *Frontiers in Plant Science* **14**, 1148884.
- Guan H, Shuai Y, Ran Q *et al.* (2020) The microbiome and metabolome of Napier grass silages prepared with screened lactic acid bacteria during ensiling and aerobic exposure. *Animal Feed Science and Technology* **269**, 114673.
- Guo X, Xu D, Li F *et al.* (2023) Current approaches on the roles of lactic acid bacteria in crop silage. *Microbial Biotechnology* **16**, 67–87.
- Keshri J, Chen Y, Pinto R *et al.* (2018) Microbiome dynamics during ensiling of corn with and without *Lactobacillus plantarum* inoculant. *Journal of Applied Microbiology* **102**, 4025–4037.
- Krishnamoorthy U, Muscato TV, Sniffen CJ *et al.* (1982) Nitrogen fractions in selected feedstuffs. *Journal of Dairy Science* **65**, 217–225.
- Kung L, Shaver RD, Grant RJ *et al.* (2018) Silage review: Interpretation of chemical, microbial, and organoleptic components of silages. *Journal of Dairy Science* **101**, 4020–4033.
- Li J, Ding H, Zhao J *et al.* (2022) Characterization and identification of a novel microbial consortium M2 and its effect on fermentation quality and enzymatic hydrolysis of sterile rice straw. *Journal of Applied Microbiology* **132**, 1687–1699.
- Li R, Jiang D, Zheng M *et al.* (2020) Microbial community dynamics during alfalfa silage with or without clostridial fermentation. *Scientific Reports* **10**, 17782.
- McAllister TA, Dunière L, Drouin P *et al.* (2018) Silage review: Using molecular approaches to define the microbial ecology of silage. *Journal of Dairy Science* **101**, 4060–4074.
- Muck RE, Nadeau EMG, McAllister TA *et al.* (2018) Silage review: Recent advances and future uses of silage additives. *Journal of Dairy Science* **101**, 3980–4000.
- Muraro GB, De Almeida Carvalho-Estrada P, de Oliveira Pasetti MH *et al.* (2021a) Bacterial dynamics of sugarcane silage in the tropics. *Environmental Microbiology* **23**, 5979–5991.
- Muraro GB, De Almeida Carvalho-Estrada P, Oliveira Pasetti MH D *et al.* (2021b) Bacterial dynamics of sugarcane silage in the tropics. *Environmental Microbiology* **23**, 5979–5991.
- Nishino N and Touno E (2005) Ensiling characteristics and aerobic stability of direct-cut and wilted grass silages inoculated with *Lactobacillus casei* or *Lactobacillus buchneri*. *Journal of Agricultural and Food Chemistry* **85**, 1882–1888.
- Okoye CO, Wang Y, Gao L *et al.* (2023) The performance of lactic acid bacteria in silage production: A review of modern biotechnology for silage improvement. *Microbiological Research* **266**, 127212.
- Oliveira AS, Weinberg ZG, Ogunade IM *et al.* (2017) Meta-analysis of effects of inoculation with homofermentative and facultative heterofermentative lactic acid bacteria on silage fermentation, aerobic stability, and the performance of dairy cows. *Journal of Dairy Science* **100**, 4587–4603.
- Penagos-Tabares F, Mahmood M, Khan MZU *et al.* (2023) Co-occurrence of mycotoxins and other fungal metabolites in total mixed rations of cows from dairy farms in Punjab, Pakistan. *Mycotoxin Research* **39**, 421–436.
- Van Soest PJ, Robertson JB and Lewis BA (1991) Methods for dietary fiber, neutral detergent fiber, and nonstarch polysaccharides in relation to animal nutrition. *Journal of Dairy Science* **74**, 3583–3597.
- Wang S, Dong Z, Li J *et al.* (2019) *Pediococcus acidilactici* strains as silage inoculants for improving the fermentation quality, nutritive value and *in vitro* ruminal digestibility in different forages. *Journal of Applied Microbiology* **126**, 424–434.
- Wang S, Zhang G, Zhao J *et al.* (2023) Fermentation quality, aerobic stability and *in vitro* gas production kinetics and digestibility in total mixed ration silage treated with lactic acid bacteria inoculants and antimicrobial additives. *Italian Journal of Animal Science* **22**, 430–441.
- Wang W, Cai X, Shao T *et al.* (2022a) Effects of bacterial inoculants on the microbial community, mycotoxin contamination, and aerobic stability of corn silage infected in the field by toxigenic fungi. *Chemical and Biological Technologies in Agriculture* **9**, 93.
- Wang W, Nie Y, Tian H *et al.* (2022b) Microbial community, co-occurrence network relationship and fermentation lignocellulose characteristics of *Broussonetia papyrifera* ensiled with wheat bran. *Microorganisms* **10**, 2015.
- Xu D, Li M, Wang Y *et al.* (2023a) Study on the effect of additives on microbial diversity, predicted functional profiles, and fermentation quality of *Broussonetia papyrifera* and *Pennisetum sinense* mixed ensilage in the karst region. *Letters in Applied Microbiology* **76**, ovad039.
- Yin X, Long J, Zhao J *et al.* (2023) Effect of growth stage on Italian ryegrass (*Lolium multiflorum* Lam.) silage fermentation from microbiological perspective. *Chemical and Biological Technologies in Agriculture* **10**, 19.
- Zhang H, Wu J, Zhao X *et al.* (2023a) Improving aerobic stability and methane production of maize stover silage with lactic acid bacteria inoculants: Focus on pentose-fermentation. *Industrial Crops and Products* **201**, 116861.
- Zhang L, Zhou X, Gu Q *et al.* (2019) Analysis of the correlation between bacteria and fungi in sugarcane tops silage prior to and after aerobic exposure. *Bioresource Technology* **291**, 121835.
- Zhang X, Ding Z, Usman S *et al.* (2023b) Metagenomics insights into the effects of lactic acid bacteria inoculation on the biological reduction of antibiotic resistance genes in alfalfa silage. *Journal of Hazardous Materials* **443**, 130329.
- Zhao J, Dong Z, Li J *et al.* (2019) Effects of sugar sources and doses on fermentation dynamics, carbohydrates changes, *in vitro* digestibility and gas production of rice straw silage. *Italian Journal of Animal Science* **18**, 1345–1355.
- Zhao J, Jing Z-D, Yin X-J *et al.* (2023) Insight into the key limiting factors affecting anaerobic fermentation quality and bacterial community of sweet sorghum by irradiation sterilization and microbiota transplant. *Chemical and Biological Technologies in Agriculture* **10**, 17.
- Zhao J, Yin X-J, Li J-F *et al.* (2022) Effects of developmental stage and store time on the microbial community and fermentation quality of sweet sorghum silage. *Italian Journal of Animal Science* **21**, 1543–1557.
- Zhao J, Yin X, Wang S *et al.* (2021) Separating the effects of chemical and microbial factors on fermentation quality and bacterial community of Napier grass silage by using gamma-ray irradiation and epiphytic microbiota transplantation. *Animal Feed Science and Technology* **280**, 115082.