

Transformations of Supported Gold Nanoparticles Observed by *In Situ* Electron Microscopy

Pei Liu¹, Tiantian Wu², Jacob Madsen³, Jakob Schiøtz², Jakob Wagner⁴ and Thomas Hansen²

¹University of Antwerp, Antwerp, Antwerpen, Belgium, ²Technical University of Denmark, Kgs. Lyngby, Hovedstaden, Denmark, ³University of Vienna, Vienna, Wien, Austria, ⁴DTU Nanolab, Technical University of Denmark, Kgs. Lyngby, Hovedstaden, Denmark

Oxide supported metal nanoparticles play an important role in heterogeneous catalysis. However, understanding the metal/oxide interface and their morphology and structure and how these change under a gaseous environment remains challenging. Herein, we investigate the interface between Au nanoparticles and a CeO₂ substrate by environmental transmission electron microscopy with atomic resolution. We find that the Au nanoparticles have two preferential epitaxial relationships with the substrate, i.e. Type I (111)[−110]CeO₂//(111)[−110]Au and Type II (111)[−110]CeO₂//(111)[1−10]Au, where Type I is preferred. *In situ* observations in the presence of O₂ show that the gas can stimulate the supported Au nanoparticles to transform between these two orientations even at room temperature [1]. Moreover, when increasing the temperature to 973 K, the transformation of an Au nanoparticle between the two orientation states and a non-crystalline state in the presence of O₂ is also observed. DFT calculations of the binding energy between Au and CeO₂ in the two relationships is strongly influenced by the presence of oxygen vacancies. For a given position of a vacancy, there is a significant energy difference between the energy of the two types. However, for some positions, Type I is preferred, and for others, Type II, but the most favorable position of the vacancy for the two types has a very similar energy. This is consistent with the observation of both types of adhesion.

Figure 1(a) shows the typical morphology of a CeO₂ supported Au nanoparticle on a model system. The shape of the commercial CeO₂ support nanoparticles is normally octahedral with eight (111) surfaces. Two distinct crystalline orientation relationships between Au and the ceria support were observed. The distribution of these two types of relationships was measured on the model sample and was found to be 62% Type I and 38% Type II on 131 Au nanoparticles (Fig. 1(b)). The 25% lattice misfit that gives rise to a network of interfacial dislocations is formed to accommodate the strain that exists at the interface.

To obtain detailed information of the structural transformation process, image sequences of supported gold nanoparticles showing the transformations were acquired *in situ* during exposure to 4.5 Pa O₂ at 973 K. Under these conditions, the nanoparticles change continuously between three structural states. Figures 2A, B, C show the structural transformation, which mainly occurs between the non-crystalline state, Type I and Type II. A timeline indicating the state of the particle is shown in Fig. 2D. The lifetime for Type II is shorter than that of Type I, which indicates a difference in energy of the two states.

This melting/resolidification phenomenon is suggested to be a result of the nanoscale size of the particles [2], the adsorption of oxygen on the surface [3] and the interaction with the CeO₂ support [4]. All of these factors can give rise to a depression of the melting point of the Au nanoparticles.

Here, further measurements of the dynamics of the Au/CeO₂ system along with analysis approaches will be discussed.

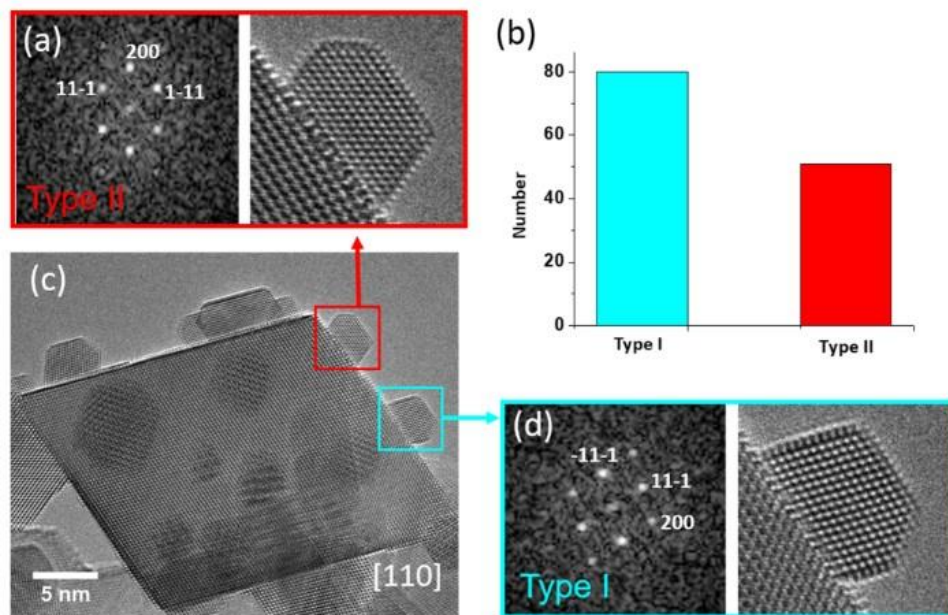


Figure 1. Typical morphology of the as-received Au/CeO₂ sample along with the occurrence of the two states.

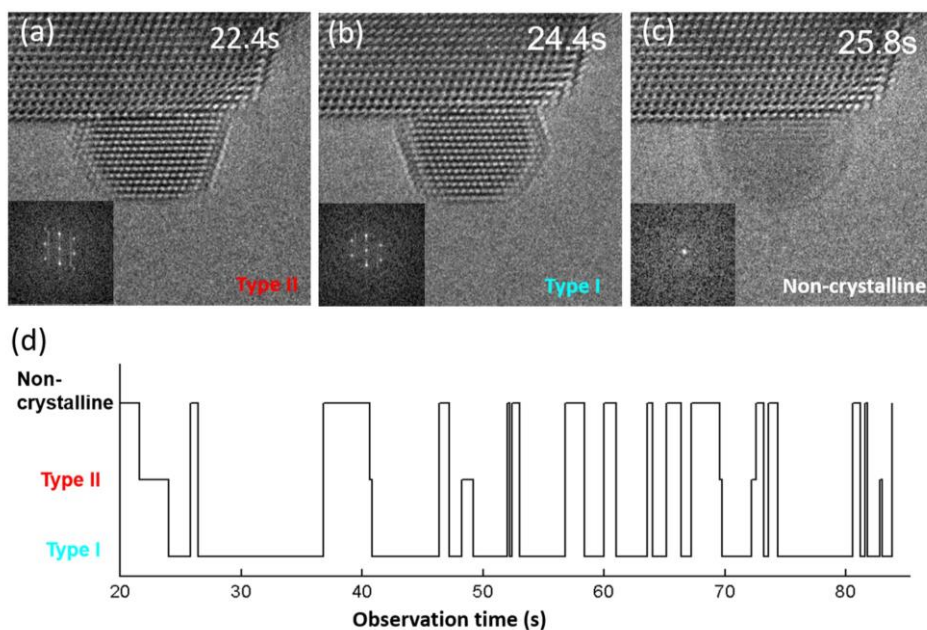


Figure 2. Different configurations of the ceria supported Au nanoparticles along with a timeline of the states.

References

- [1] P. Liu, T. T. Wu, J. Madsen *et al.*, *Nanoscale* 11, (2019) 11885-11891.
- [2] P. Schlexer, A. B. Andersen, B. Sebok *et al.*, *Part. Part. Syst. Charact.* 36, (2019) 7.
- [3] N. D. S. Canning, D. Outka, R. J. Madix, *Surf. Sci.* 141, (1984) 240-254.
- [4] J. Lee, T. Tanaka, J. Lee *et al.*, *Calphad-Comput. Coupling Ph. Diagrams Thermochem.* 31, (2007) 105-111.