


THE ZHOU ORDINAL OF LABELLED MARKOV PROCESSES OVER SEPARABLE SPACES

MARTÍN SANTIAGO MORONI and PEDRO SÁNCHEZ TERRAF 

CIEM-FAMAF,
Universidad Nacional de Córdoba

Abstract. There exist two notions of equivalence of behavior between states of a Labelled Markov Process (LMP): state bisimilarity and event bisimilarity. The first one can be considered as an appropriate generalization to continuous spaces of Larsen and Skou's probabilistic bisimilarity, whereas the second one is characterized by a natural logic. C. Zhou expressed state bisimilarity as the greatest fixed point of an operator \mathcal{O} , and thus introduced an ordinal measure of the discrepancy between it and event bisimilarity. We call this ordinal the *Zhou ordinal* of \mathbb{S} , $\mathfrak{Z}(\mathbb{S})$. When $\mathfrak{Z}(\mathbb{S}) = 0$, \mathbb{S} satisfies the Hennessy–Milner property. The second author proved the existence of an LMP \mathbb{S} with $\mathfrak{Z}(\mathbb{S}) \geq 1$ and Zhou showed that there are LMPs having an infinite Zhou ordinal. In this paper we show that there are LMPs \mathbb{S} over separable metrizable spaces having arbitrary large countable $\mathfrak{Z}(\mathbb{S})$ and that it is consistent with the axioms of *ZFC* that there is such a process with an uncountable Zhou ordinal.

§1. Introduction. Equivalence of behavior, or *bisimilarity* in any of its flavors, is a fundamental concept in the study of processes, logic, and many other areas of Computer Science and Mathematics. In the case of discrete (countable) processes, many formalizations of the concept result to be equivalent and it can be completely described by using some form of modal logic—the well-known Hennessy–Milner property.

As soon as one leaves the realm of discrete processes, the question of defining and characterizing behavior turns into a problem with various (sometimes unexpected) mathematical edges. For the case of *labelled Markov processes (LMP)* [3], the first issue to be taken care of is that the concept of probability and measure cannot be defined for all subsets of the state space. Hence the complexity of state spaces (in the sense of Descriptive Set Theory [7]) plays an important role.

A notable consequence is that an LMP admits two generally different notions of equivalence of behavior between its states: *state* bisimilarity and *event* bisimilarity. The first one can be considered as an appropriate generalization to continuous spaces of Larsen and Skou's probabilistic bisimilarity. On the other hand, event bisimilarity can be characterized by a very simple and natural modal logic \mathcal{L} defined by the following

Received: October 17, 2020.

2020 *Mathematics Subject Classification*: Primary 03B70, Secondary 03B45, 03E15, 68Q85.

Keywords and phrases: labelled Markov process, probabilistic bisimilarity, Zhou ordinal, non-measurable set, Martin's axiom, non-classical logics.



grammar:

$$\phi := \top \mid \phi_1 \wedge \phi_2 \mid \langle a \rangle_{>q} \phi,$$

where a ranges over possible actions of the interpreting LMP and q over rationals between 0 and 1; the formula $\langle a \rangle_{>q} \phi$ holds on states at which the probability of reaching another state satisfying ϕ after an a transition is greater than q .

Despite its simplicity, this logic also characterizes state bisimilarity for wide classes of LMPs (thus, the two types of bisimilarities coincide). Desharnais, Edalat and Panangaden [4] showed (building on Edalat's categorical result [6]) that the category of *generalized* LMP over analytic state spaces has the Hennessy–Milner property with respect to \mathcal{L} . This result was later strengthened by Doberkat [5] in that it applies to the original category of LMP. Recently, Pachl and the second author extended the result to LMP over universally measurable state spaces [9].

But if regularity assumptions on the state spaces are omitted, the Hennessy–Milner property is lost (see [10] by the second author). It is therefore of interest to understand how state bisimilarity differs from the event one for LMP over general measurable spaces. Zhou proposed in [12] one way to quantify this difference, by expressing state bisimilarity as the greatest fixed point of an operator \mathcal{O} and pointed out an LMP for which more than ω iterates of \mathcal{O} are needed to reach it.

In this paper, we study the operator \mathcal{O} in a general setting, a dual version \mathcal{G} of it, and the hierarchy of relations and σ -algebras respectively induced by them. We then define the *Zhou ordinal* $\mathfrak{Z}(\mathbb{S})$ of an LMP \mathbb{S} to be the number of iterates needed to reach state bisimilarity when one starts from the event one. After reviewing some basic material in Section 2, we develop the general theory of the operators \mathcal{O} and \mathcal{G} in Section 3. In Section 4 we focus on the class \mathcal{S} of LMP over separable metrizable spaces, “separable LMP” for short, and the supremum of the Zhou ordinals of such processes, $\mathfrak{Z}(\mathcal{S})$. One of our main results is that $\mathfrak{Z}(\mathcal{S})$ is a limit ordinal of uncountable cofinality (and hence at least ω_1). In Section 5, we construct a family of LMPs $\{\mathbb{S}(\beta) \mid \beta \leq \omega_1\}$ having $\mathfrak{Z}(\mathbb{S}(\beta)) = \beta$ when β is a limit ordinal; these processes are separable for countable β . We also discuss the consistency with the axioms of set theory that the bound ω_1 is actually attained by a separable LMP. Finally, some further directions are pointed out in Section 6.

§2. Preliminaries. An algebra over a set S is a nonempty family of subsets of S closed under finite unions and complementation. It is a σ -algebra if it is also closed under countable unions. Given an arbitrary family \mathcal{U} of subsets of S , we use $\sigma(\mathcal{U})$ to denote the least σ -algebra over S containing \mathcal{U} . Let (S, Σ) be a *measurable space*, i.e., a set S with a σ -algebra Σ over S . We say that (S, Σ) (or Σ) is countably generated if there is some countable family $\mathcal{U} \subseteq \Sigma$ such that $\Sigma = \sigma(\mathcal{U})$. A *subspace* of the measurable space (S, Σ) consists of a subset $Y \subseteq S$ with the *relative σ -algebra* $\Sigma \upharpoonright Y := \{A \cap Y \mid A \in \Sigma\}$. Notice that if $\Sigma = \sigma(\mathcal{U})$, then $\Sigma \upharpoonright Y = \sigma(\mathcal{U} \upharpoonright Y)$. If $(S_1, \Sigma_1), (S_2, \Sigma_2)$ are two measurable spaces, we say that $f : S_1 \rightarrow S_2$ is (Σ_1, Σ_2) -measurable if $f^{-1}(A) \in \Sigma_1$ for all $A \in \Sigma_2$.

Assume now that $V \subseteq S$. We will use Σ_V to denote $\sigma(\Sigma \cup \{V\})$, the extension of Σ by the set V . It is immediate that $\Sigma_V = \{(B_1 \cap V) \cup (B_2 \cap V^c) \mid B_1, B_2 \in \Sigma\}$. It is obvious that if Σ is countably generated so is Σ_V . The *sum* of two measurable spaces (S_1, Σ_1) and (S_2, Σ_2) is $(S_1 \oplus S_2, \Sigma_1 \oplus \Sigma_2)$, with the following abuse of notation: $S_1 \oplus S_2$ is the

disjoint union (direct sum qua sets) and $\Sigma_1 \oplus \Sigma_2 := \{Q_1 \oplus Q_2 \mid Q_i \in \Sigma_i\}$. If Y is a topological space, $\mathcal{B}(Y)$ will denote the σ -algebra generated by the open sets in Y ; hence $(Y, \mathcal{B}(Y))$ is a measurable space, the *Borel space* of Y . We say that a family of sets $\mathcal{F} \subseteq \mathcal{P}(S)$ *separates points* if for every pair of distinct points x, y in S , there is some $A \in \mathcal{F}$ with $x \in A$ and $y \notin A$. We have the following proposition.

PROPOSITION 1. [7, Proposition 12.1] *Let (S, Σ) be a measurable space. The following are equivalent:*

1. (S, Σ) is isomorphic to some $(Y, \mathcal{B}(Y))$, where Y is separable metrizable.
2. (S, Σ) is isomorphic to some $(Y, \mathcal{B}(Y))$ for $Y \subseteq [0, 1]$.
3. (S, Σ) is countably generated and separates points.

A class \mathcal{M} of subsets of S is *monotone* if it is closed under the formation of monotone unions and intersections. Halmos' Monotone Class Theorem will be frequently used in this work.

THEOREM 2. [1, Theorem 3.4] *If \mathcal{F} is an algebra of sets and \mathcal{M} is a monotone class, then $\mathcal{F} \subseteq \mathcal{M}$ implies $\sigma(\mathcal{F}) \subseteq \mathcal{M}$.*

Given a measurable space (S, Σ) , a *subprobability measure* on S is a $[0, 1]$ -valued set function μ defined on Σ such that $\mu(0) = 0$ and for any pairwise disjoint collection $\{A_n \mid n \in \omega\} \subseteq \Sigma$, we have $\mu(\bigcup_{n \in \omega} A_n) = \sum_{n \in \omega} \mu(A_n)$. In addition, for *probability* measures we require $\mu(S) = 1$. If $\Sigma \subseteq \Sigma'$ and μ, μ' are measures defined on $(S, \Sigma), (S, \Sigma')$ respectively, we say that μ' *extends* μ to (S, Σ') when $\mu' \upharpoonright \Sigma = \mu$. A key idea in the construction of examples is the possibility of extending a measure in the following particular way:

THEOREM 3. *Let μ be a finite measure defined in (S, Σ) and let $V \subseteq S$ be a non- μ -measurable set. Then there are extensions μ_0 and μ_1 of μ to Σ_V such that $\mu_0(V) \neq \mu_1(V)$.*

DEFINITION 4. *A Markov kernel on (S, Σ) is a function $\tau : S \times \Sigma \rightarrow [0, 1]$ such that for each fixed $s \in S$, $\tau(s, \cdot) : \Sigma \rightarrow [0, 1]$ is a subprobability measure, and for each fixed set $X \in \Sigma$, $\tau(\cdot, X) : S \rightarrow [0, 1]$ is $(\Sigma, \mathcal{B}[0, 1])$ -measurable.*

These kernels will play the role of transition functions in the processes we define next. Let L be a countable set.

DEFINITION 5. *A labelled Markov process (LMP) with label set L is a triple $\mathbb{S} = (S, \Sigma, \{\tau_a \mid a \in L\})$, where S is a set of states, Σ is a σ -algebra over S , and for each $a \in L$, $\tau_a : S \times \Sigma \rightarrow [0, 1]$ is a Markov kernel. An LMP is said to be separable if its state space is countably generated and separates points.*

By Proposition 1, the restriction to separable LMP is equivalent to studying processes whose state space is a subset of Euclidean space.

EXAMPLE 6. *We will now present the LMP \mathbb{U} , which was introduced (under the name \mathbf{S}_3) in [10]. This will be an important example throughout this paper to illustrate concepts and motivate constructions. From this point onwards, I will denote the open interval $(0, 1)$, \mathfrak{m} will be the Lebesgue measure on I and \mathcal{B}_V will be the σ -algebra $\sigma(\mathcal{B}(I) \cup \{V\})$, where V is a Lebesgue non-measurable subset of I . By Theorem 3 we have two extensions \mathfrak{m}_0 and \mathfrak{m}_1 of \mathfrak{m} such that $\mathfrak{m}_0(V) \neq \mathfrak{m}_1(V)$. Also, let $\{q_n\}_{n \in \omega}$ be an enumeration of the rationals in I and define $B_n := (0, q_n)$; hence $\{B_n \mid n \in \omega\}$ is a countable generating family of $\mathcal{B}(I)$.*

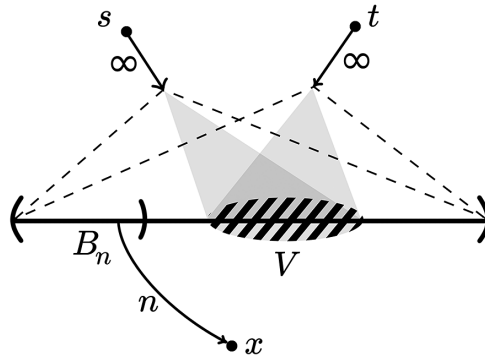


Figure 1. The LMP \mathbb{U} .

Let $s, t, x \notin I$ be mutually distinct; we may view \mathfrak{m}_0 and \mathfrak{m}_1 as measures defined on the sum $I \oplus \{s, t, x\}$, supported on I . The label set will be $L := \omega \cup \{\infty\}$. Now define $\mathbb{U} = (U, \Upsilon, \{\tau_n \mid n \in L\})$ such that

$$\begin{aligned} (U, \Upsilon) &:= (I \oplus \{s, t, x\}, \mathcal{B}_V \oplus \mathcal{P}(\{s, t, x\})), \\ \tau_n(r, A) &:= \chi_{B_n}(r) \cdot \delta_x(A), \\ \tau_\infty(r, A) &:= \chi_{\{s\}}(r) \cdot \mathfrak{m}_0(A) + \chi_{\{t\}}(r) \cdot \mathfrak{m}_1(A), \end{aligned}$$

when $n \in \omega$ and $A \in \Upsilon$. This defines an LMP since for all r , $0 \leq \chi_{B_n}(r) \leq 1$ and $0 \leq \chi_{\{s\}}(r) + \chi_{\{t\}}(r) \leq 1$ and we infer measurability because $\tau_l(\cdot, A)$ is always a linear combination of measurable functions.

The dynamics of this process goes intuitively as follows: The states s and t can only make an ∞ -labelled transition to a “uniformly distributed” state in I , but they disagree on the probability of reaching $V \subseteq I$. Then, each point of $B_n \subseteq I$ can make an n -transition to x . Finally, x can make no transition at all (see Figure 1).

For R a symmetric relation over S , we say that $A \subseteq S$ is R -closed if $\{s \in S \mid \exists x \in A \times R s\} \subseteq A$. If $\Gamma \subseteq \mathcal{P}(S)$, we denote by $\Gamma(R)$ the family of all R -closed sets in Γ . Note that if Γ is a σ -algebra, then $\Gamma(R)$ is a sub- σ -algebra of Γ . We also define a new relation $\mathcal{R}(\Gamma)$ consisting of all pairs (s, t) such that $\forall A \in \Gamma (s \in A \leftrightarrow t \in A)$.

DEFINITION 7. Fix an LMP $\mathbb{S} = (S, \Sigma, \{\tau_a \mid a \in L\})$. A state bisimulation R on \mathbb{S} is a symmetric relation on S such that $\forall a \in L \tau_a(s, C) = \tau_a(t, C)$ whenever $s R t$ and $C \in \Sigma(R)$. We say that s and t are state bisimilar, denoted by $s \sim_s t$, if there exists some state bisimulation R such that $s R t$. The relation \sim_s is called state bisimilarity.

DEFINITION 8. Let $\mathbb{S} = (S, \Sigma, \{\tau_a \mid a \in L\})$ be an LMP and $\Lambda \subseteq \Sigma$. Λ is stable with respect to \mathbb{S} if for all $A \in \Lambda$, $r \in [0, 1] \cap \mathbb{Q}$ and $a \in L$, we have $\{s : \tau_a(s, A) > r\} \in \Lambda$.

Note that for a sub- σ -algebra $\Lambda \subseteq \Sigma$, Λ is stable if and only if $(S, \Lambda, \{\tau_a \upharpoonright S \times \Lambda \mid a \in L\})$ is an LMP.

DEFINITION 9. Let $\mathbb{S} = (S, \Sigma, \{\tau_a \mid a \in L\})$ be an LMP. A relation R on S will be called an event bisimulation if there exists a stable sub- σ -algebra $\Lambda \subseteq \Sigma$ such that $R = \mathcal{R}(\Lambda)$.

Two states s and t of an LMP are event bisimilar, denoted by $s \sim_e t$, if there exists some event bisimulation R such that $s R t$. The relation \sim_e is called event bisimilarity.

To illustrate these concepts with the LMP \mathbb{U} , one can show that $\Xi := \sigma(\mathcal{B}(I) \cup \{\{s, t\}, \{x\}\})$ is a stable σ -algebra; hence s and t are event bisimilar. However they are not state bisimilar as V is $\mathcal{R}(\sim_s)$ -closed and $\tau_\infty(s, V) \neq \tau_\infty(t, V)$. See [10] for details.

Recall the modal logic \mathcal{L} presented in the Introduction. We spell out the formal interpretation of the modalities: $s \models \langle a \rangle_{>q} \phi$ on the LMP $(S, \Sigma, \{\tau_a \mid a \in L\})$ if and only if there exists $A \in \Sigma$ such that for all $s' \in A$, $s' \models \phi$ and $\tau_a(s, A) > q$. Given a formula ϕ we write $\llbracket \phi \rrbracket$ to denote the set of states satisfying ϕ . It can be proved by induction that each of these sets is measurable. We write $\llbracket \mathcal{L} \rrbracket$ for the collection of sets $\llbracket \phi \rrbracket$; we have the following logical characterization of event bisimilarity.

THEOREM 10. [2, Proposition 5.5 and Corollary 5.6] *For an LMP $(S, \Sigma, \{\tau_a \mid a \in L\})$, $\sigma(\llbracket \mathcal{L} \rrbracket)$ is the smallest stable σ -algebra included in Σ . Therefore the logic \mathcal{L} characterizes event bisimilarity, in symbols $\sim_e = \mathcal{R}(\llbracket \mathcal{L} \rrbracket) = \mathcal{R}(\sigma(\llbracket \mathcal{L} \rrbracket))$.*

The last equality follows easily from the fact that $\mathcal{R}(\sigma(\mathcal{F})) = \mathcal{R}(\mathcal{F})$ holds for any family of sets \mathcal{F} .

Regarding \mathbb{U} , the σ -algebra Ξ turns out to be $\sigma(\llbracket \mathcal{L} \rrbracket)$; therefore $\sim_e = \text{id}_U \cup \{(s, t), (t, s)\}$. This further implies that $\sim_s = \text{id}_U$ given that it can be proved that $\sim_s \subseteq \sim_e$ is always the case and, as noted before, s and t are not state-bisimilar. Consequently, this is an example where state bisimilarity is properly contained in event bisimilarity. In fact, the LMP \mathbb{U} was introduced in [10] to show that event bisimilarity and state bisimilarity differ in LMP over general measurable spaces. In this work it will serve as a seed for several constructions to be performed in Section 4.

§3. The operators \mathcal{O} and \mathcal{G} . Fix a Markov process $\mathbb{S} = (S, \Sigma, \{\tau_a \mid a \in L\})$. We will work with the operators defined in [12], and we introduce a new one, \mathcal{G} :

DEFINITION 11. *Let $\Lambda \subseteq \Sigma$ and $R \subseteq S \times S$.*

- *The relation $\mathcal{R}^T(\Lambda)$ is given by*

$$(s, t) \in \mathcal{R}^T(\Lambda) \iff \forall a \in L \forall E \in \Lambda \tau_a(s, E) = \tau_a(t, E).$$

- $\mathcal{O}(R) := \mathcal{R}^T(\Sigma(R))$.
- $\mathcal{G}(\Lambda) := \Sigma(\mathcal{R}^T(\Lambda))$.

Note that $\mathcal{O}(R)$ is always an equivalence relation for any R and if Λ is a σ -algebra, then $\mathcal{G}(\Lambda)$ is too. The motivating idea behind the definition of \mathcal{R}^T is to relate states that are probabilistically indistinguishable with respect to a fixed set of “tests,” here given by the family Λ of events. An equivalence relation R on the set of states induces naturally $\Sigma(R)$, the R -closed sets in Σ , as a family of tests. It follows that R is a state bisimulation if and only if $R \subseteq \mathcal{R}^T(\Sigma(R)) = \mathcal{O}(R)$.

EXAMPLE 12. *Let us do some simple calculations with the operator \mathcal{O} concerning the LMP \mathbb{U} . If ∇ denotes the total relation $U \times U$,*

$$\mathcal{O}(\nabla) = \mathcal{R}^T(\Upsilon(\nabla)) = \mathcal{R}^T(\{\emptyset, U\}) = \text{id}_U \cup \{(s, t), (t, s)\} = \sim_e.$$

Also, because $V \in \Upsilon(\sim_e)$,

$$\mathcal{O}(\sim_e) = \mathcal{R}^T(\Upsilon(\sim_e)) = \text{id}_U = \sim_s.$$

We highlight the fact that a single application of \mathcal{O} from the event bisimilarity \sim_e leads to state bisimilarity \sim_s .

In the next proposition we collect some basic facts on the operators defined up to this point; most of them appear in [12].

PROPOSITION 13. *Let $\Lambda, \Lambda' \subseteq \Sigma$ be sub- σ -algebras and $R, R' \subseteq S \times S$.*

1. $\Lambda \subseteq \Sigma(\mathcal{R}(\Lambda))$.
2. $R \subseteq \mathcal{R}(\Sigma(R))$.
3. If $\Lambda \subseteq \Lambda'$, then $\mathcal{R}(\Lambda) \supseteq \mathcal{R}(\Lambda')$ and $\mathcal{R}^T(\Lambda) \supseteq \mathcal{R}^T(\Lambda')$.
4. If $R \subseteq R'$, then $\Sigma(R) \supseteq \Sigma(R')$.
5. $\mathcal{R}(\Sigma(\mathcal{R}(\Lambda))) = \mathcal{R}(\Lambda)$.
6. \mathcal{O} and \mathcal{G} are monotone operators.
7. R is a state bisimulation iff $(S, \Sigma(R), \{\tau_a \mid a \in L\})$ is an LMP.
8. If Λ is stable, then $\mathcal{R}(\Lambda) \subseteq \mathcal{R}^T(\Lambda)$.

We will also need some basic material on fixpoint theory. We work with von Neumann ordinals, viz. $\alpha = \{\gamma \mid \gamma < \alpha\}$. If $F : A \rightarrow A$ is a function on a complete lattice A , we define the iterates of F by $F^0(x) := x$, $F^{\alpha+1}(x) := F(F^\alpha(x))$, $F^\lambda(x) := \bigwedge_{\alpha < \lambda} F^\alpha(x)$ if λ is a limit ordinal, and $F^\infty(x) = \bigwedge_\lambda F^\lambda(x)$. We say that x is a *pre-fixpoint* (resp. *post-fixpoint*) of F if $F(x) \leq x$ (resp. $x \leq F(x)$).

PROPOSITION 14. [11, Exercise 2.8.10] *Let $F : A \rightarrow A$ be a monotone function on a complete lattice A . If x is a pre-fixpoint of F , then $F^\infty(x)$ is the greatest fixpoint of F below x . Furthermore, this fixed point is reached at an ordinal α such that $|\alpha| \leq |A|$.*

As in Zhou’s work [12] we will construct chains of relations and of σ -algebras using the operators \mathcal{O} and \mathcal{G} . The next result will be an aid in showing that $\sigma(\llbracket \mathcal{L} \rrbracket)$ (resp. $\sim_e = \mathcal{R}(\sigma(\llbracket \mathcal{L} \rrbracket))$) is a post(pre)-fixpoint of $\mathcal{G}(\mathcal{O})$.

LEMMA 15. $\mathcal{R}^T(\sigma(\llbracket \mathcal{L} \rrbracket)) = \mathcal{R}(\sigma(\llbracket \mathcal{L} \rrbracket))$.

Proof. Since $\sigma(\llbracket \mathcal{L} \rrbracket)$ is stable, we have $\mathcal{R}(\sigma(\llbracket \mathcal{L} \rrbracket)) \subseteq \mathcal{R}^T(\sigma(\llbracket \mathcal{L} \rrbracket))$ by Proposition 13(8). We prove the other inclusion by structural induction on formulas. Suppose that $(s, t) \in \mathcal{R}^T(\sigma(\llbracket \mathcal{L} \rrbracket))$. If $A := \llbracket \top \rrbracket = S$, then $s \in A \Leftrightarrow t \in A$. The case $A = \llbracket \phi \wedge \psi \rrbracket = \llbracket \phi \rrbracket \cap \llbracket \psi \rrbracket$ is also trivial from the IH. For the case $A = \llbracket \langle a \rangle_{>q} \phi \rrbracket$, observe that the hypothesis $(s, t) \in \mathcal{R}^T(\sigma(\llbracket \mathcal{L} \rrbracket))$ implies $s \in A \Leftrightarrow \tau_a(s, \llbracket \phi \rrbracket) > q \Leftrightarrow \tau_a(t, \llbracket \phi \rrbracket) > q \Leftrightarrow t \in A$. Then, the σ -algebra $\mathcal{A}_{s,t} := \{A \in \Sigma \mid s \in A \Leftrightarrow t \in A\}$ includes $\llbracket \mathcal{L} \rrbracket$. We conclude that $\sigma(\llbracket \mathcal{L} \rrbracket) \subseteq \mathcal{A}_{s,t}$, i.e., $(s, t) \in \mathcal{R}(\sigma(\llbracket \mathcal{L} \rrbracket))$. □

COROLLARY 16. $\sigma(\llbracket \mathcal{L} \rrbracket) \subseteq \mathcal{G}(\sigma(\llbracket \mathcal{L} \rrbracket))$ and $\mathcal{O}(\sim_e) \subseteq \sim_e$.

Proof. Since $\Sigma \circ \mathcal{R}$ is expansive by Proposition 13(1), the previous lemma implies that $\sigma(\llbracket \mathcal{L} \rrbracket) \subseteq \Sigma(\mathcal{R}(\sigma(\llbracket \mathcal{L} \rrbracket))) = \Sigma(\mathcal{R}^T(\sigma(\llbracket \mathcal{L} \rrbracket))) = \mathcal{G}(\sigma(\llbracket \mathcal{L} \rrbracket))$. Moreover, by antimonicity of \mathcal{R}^T we obtain the result for \mathcal{O} :

$$\mathcal{O}(\sim_e) = \mathcal{R}^T(\Sigma(\mathcal{R}(\sigma(\llbracket \mathcal{L} \rrbracket)))) \subseteq \mathcal{R}^T(\sigma(\llbracket \mathcal{L} \rrbracket)) = \mathcal{R}(\sigma(\llbracket \mathcal{L} \rrbracket)) = \sim_e. \quad \square$$

The inclusions $\mathcal{O}(R) \subseteq R$ and $\Lambda \subseteq \mathcal{G}(\Lambda)$ do not hold in general for arbitrary R and Λ . For example, if τ is null for all arguments, $\mathcal{O}(R) = S \times S$ for any relation R and analogously for \mathcal{G} .

Given a relation R we define a transfinite sequence of equivalence relations using the operator \mathcal{O} :

- $\mathcal{O}^0(R) := R$.
- $\mathcal{O}^{\alpha+1}(R) := \mathcal{O}(\mathcal{O}^\alpha(R))$.
- $\mathcal{O}^\lambda(R) := \bigcap_{\alpha < \lambda} \mathcal{O}^\alpha(R)$ if λ is a limit.

Similarly, if $\Lambda \subseteq \Sigma$ is a σ -algebra, \mathcal{G} generates a family of σ -algebras given by:

- $\mathcal{G}^0(\Lambda) := \Lambda$.
- $\mathcal{G}^{\alpha+1}(\Lambda) := \mathcal{G}(\mathcal{G}^\alpha(\Lambda))$.
- $\mathcal{G}^\lambda(\Lambda) := \sigma(\bigcup_{\alpha < \lambda} \mathcal{G}^\alpha(\Lambda))$ if λ is a limit ordinal.

Note that in the limit case of this last definition we must take the generated σ -algebra since the union of a countable chain of σ -algebras is not in general a σ -algebra.

Let $\Sigma_0 \subseteq \Sigma$ be a sub- σ -algebra and $R_0 \subseteq S \times S$ a relation. From the iterates of \mathcal{O} and \mathcal{G} we define new σ -algebras and relations.

DEFINITION 17. For every ordinal α let $\Sigma_\alpha := \mathcal{G}^\alpha(\Sigma_0)$ and $R_\alpha := \mathcal{O}^\alpha(R_0)$.

It is clear that if $\alpha < \lambda$, then $R_\lambda \subseteq R_\alpha$ since $R_\lambda = \mathcal{O}^\lambda(R_0) = \bigcap_{\beta < \lambda} \mathcal{O}^\beta(R_0) = \bigcap_{\beta < \lambda} R_\beta \subseteq R_\alpha$. It is also easy to verify from the definitions that $\Sigma_\alpha \subseteq \Sigma_\lambda$. We are interested in determining what other relationships hold among these relations and σ -algebras. We are mainly concerned in the case in which $\Sigma_0 = \sigma(\llbracket \mathcal{L} \rrbracket)$ and when R_0 is the relation of event bisimilarity; then by Lemma 15 we have $R_0 = \mathcal{R}^T(\Sigma_0)$.

PROPOSITION 18. If $R_0 = \mathcal{R}^T(\Sigma_0)$, then for all α , $R_\alpha = \mathcal{R}^T(\Sigma_\alpha)$.

Proof. By induction on α . The case $\alpha = 0$ is included in the hypothesis. Now assume that it holds for α . We calculate as follows: $R_{\alpha+1} = \mathcal{O}^{\alpha+1}(R_0) = \mathcal{O}(\mathcal{O}^\alpha(R_0)) = \mathcal{O}(R_\alpha) = \mathcal{R}^T(\Sigma(R_\alpha)) = \mathcal{R}^T(\Sigma(\mathcal{R}^T(\Sigma_\alpha))) = \mathcal{R}^T(\mathcal{G}(\Sigma_\alpha)) = \mathcal{R}^T(\mathcal{G}(\mathcal{G}^\alpha(\Sigma_0))) = \mathcal{R}^T(\mathcal{G}^{\alpha+1}(\Sigma_0)) = \mathcal{R}^T(\Sigma_{\alpha+1})$. Then it holds for $\alpha + 1$.

Suppose now that the result holds for all $\alpha < \lambda$, with λ a limit ordinal. We have $R_\lambda = \mathcal{O}^\lambda(R_0) = \bigcap_{\alpha < \lambda} \mathcal{O}^\alpha(R_0) = \bigcap_{\alpha < \lambda} R_\alpha = \bigcap_{\alpha < \lambda} \mathcal{R}^T(\Sigma_\alpha)$. We will prove that the last term equals $\mathcal{R}^T(\bigcup_{\alpha < \lambda} \Sigma_\alpha)$. Let $s, t \in S$. Then

$$\begin{aligned} (s, t) \in \bigcap_{\alpha < \lambda} \mathcal{R}^T(\Sigma_\alpha) &\Leftrightarrow \forall \alpha < \lambda \forall a \in L \forall Q (Q \in \Sigma_\alpha \Rightarrow \tau_a(s, Q) = \tau_a(t, Q)) \\ &\Leftrightarrow \forall a \in L \forall Q \forall \alpha < \lambda (Q \in \Sigma_\alpha \Rightarrow \tau_a(s, Q) = \tau_a(t, Q)) \\ &\Leftrightarrow \forall a \in L \forall Q (\exists \alpha < \lambda Q \in \Sigma_\alpha \Rightarrow \tau_a(s, Q) = \tau_a(t, Q)) \\ &\Leftrightarrow \forall a \in L \forall Q (Q \in \bigcup_{\alpha < \lambda} \Sigma_\alpha \Rightarrow \tau_a(s, Q) = \tau_a(t, Q)) \\ &\Leftrightarrow (s, t) \in \mathcal{R}^T(\bigcup_{\alpha < \lambda} \Sigma_\alpha). \end{aligned}$$

CLAIM. $\mathcal{R}^T(\bigcup_{\alpha < \lambda} \Sigma_\alpha) = \mathcal{R}^T(\sigma(\bigcup_{\alpha < \lambda} \Sigma_\alpha))$. □

With this we can conclude since

$$\mathcal{R}^T(\sigma(\bigcup_{\alpha < \lambda} \Sigma_\alpha)) = \mathcal{R}^T(\sigma(\bigcup_{\alpha < \lambda} \mathcal{G}^\alpha(\Sigma_0))) = \mathcal{R}^T(\mathcal{G}^\lambda(\Sigma_0)) = \mathcal{R}^T(\Sigma_\lambda).$$

Now we prove the claim. Let $s, t \in S$ such that $(s, t) \in \mathcal{R}^T(\bigcup_{\alpha < \lambda} \Sigma_\alpha)$. We define $\mathcal{D}_{s,t} := \{A \in \Sigma \mid \forall a \in L, \tau_a(s, A) = \tau_a(t, A)\}$. We check that $\mathcal{D}_{s,t}$ is a monotone class

on S . If $\{A_i\}_{i \in \omega}$ is an increasing family of subsets S such that $A_i \in \mathcal{D}_{s,t}$, upper continuity of the measures $\tau_a(s, \cdot)$ and $\tau_a(t, \cdot)$ implies

$$\tau_a(s, \bigcup_{i \in \omega} A_i) = \lim_i \tau_a(s, A_i) = \lim_i \tau_a(t, A_i) = \tau_a(t, \bigcup_{i \in \omega} A_i).$$

We argue similarly for an intersection of a decreasing family in $\mathcal{D}_{s,t}$ by using lower continuity of the (finite) measures involved. Since, by hypothesis, $\bigcup_{\alpha < \lambda} \Sigma_\alpha \subseteq \mathcal{D}_{s,t}$ and moreover, the family $\bigcup_{\alpha < \lambda} \Sigma_\alpha$ is an algebra of subsets of S , the Monotone Class Theorem yields $\sigma(\bigcup_{\alpha < \lambda} \Sigma_\alpha) \subseteq \mathcal{D}_{s,t}$.

Since the reverse inclusion $\mathcal{R}^T(\bigcup_{\alpha < \lambda} \Sigma_\alpha) \supseteq \mathcal{R}^T(\sigma(\bigcup_{\alpha < \lambda} \Sigma_\alpha))$ is trivial, we have the result.

COROLLARY 19. *If $R_0 = \mathcal{R}^T(\Sigma_0)$, then for all α , $\Sigma(R_\alpha) = \Sigma_{\alpha+1}$.*

Proof. Unfolding definitions,

$$\Sigma(R_\alpha) = \Sigma(\mathcal{R}^T(\Sigma_\alpha)) = \Sigma(\mathcal{R}^T(\mathcal{G}^\alpha(\Sigma_0))) = \mathcal{G}(\mathcal{G}^\alpha(\Sigma_0)) = \mathcal{G}^{\alpha+1}(\Sigma_0) = \Sigma_{\alpha+1}.$$

□

PROPOSITION 20. *If $R_0 = \mathcal{R}(\Sigma_0) = \mathcal{R}^T(\Sigma_0)$, then for all α , $R_{\alpha+1} \subseteq R_\alpha$.*

Proof. We work by induction on α . By using the antimonotonicity of \mathcal{R}^T and $\Sigma(\mathcal{R}(\Sigma_0)) \supseteq \Sigma_0$ we have

$$R_1 = \mathcal{O}(R_0) = \mathcal{R}^T(\Sigma(R_0)) = \mathcal{R}^T(\Sigma(\mathcal{R}(\Sigma_0))) \subseteq \mathcal{R}^T(\Sigma_0) = R_0.$$

This shows the base case. Assume the result for α , then by applying the monotonicity of \mathcal{O} to the IH, we have $R_{\alpha+2} = \mathcal{O}(R_{\alpha+1}) \subseteq \mathcal{O}(R_\alpha) = R_{\alpha+1}$.

For limit λ we observe that for all $\alpha < \lambda$ monotonicity of \mathcal{O} and IH ensure $R_{\lambda+1} = \mathcal{O}(R_\lambda) \subseteq \mathcal{O}(R_\alpha) = R_{\alpha+1} \subseteq R_\alpha$. Then, $R_{\lambda+1} \subseteq \bigcap_{\alpha < \lambda} R_\alpha = R_\lambda$. □

COROLLARY 21. *If $R_0 = \mathcal{R}(\Sigma_0) = \mathcal{R}^T(\Sigma_0)$, then for all α , $\Sigma_\alpha \subseteq \Sigma_{\alpha+1}$.*

Proof. For $\alpha = 0$ we observe that $\Sigma_0 \subseteq \Sigma(\mathcal{R}(\Sigma_0)) = \Sigma(\mathcal{R}^T(\Sigma_0)) = \mathcal{G}(\Sigma_0) = \Sigma_1$. For successor ordinals, we use Propositions 18 and 20 to obtain

$$\Sigma_{\alpha+1} = \mathcal{G}(\Sigma_\alpha) = \Sigma(\mathcal{R}^T(\Sigma_\alpha)) = \Sigma(R_\alpha) \subseteq \Sigma(R_{\alpha+1}) = \Sigma_{\alpha+2}.$$

Finally, for the limit case, observe that for all $\alpha < \lambda$, $\Sigma_\alpha \subseteq \Sigma_\lambda$; then by IH and monotonicity of \mathcal{G} we have $\Sigma_\alpha \subseteq \Sigma_{\alpha+1} = \mathcal{G}(\Sigma_\alpha) \subseteq \mathcal{G}(\Sigma_\lambda) = \Sigma_{\lambda+1}$. Therefore $\Sigma_\lambda = \sigma(\bigcup_{\alpha < \lambda} \Sigma_\alpha) \subseteq \Sigma_{\lambda+1}$. □

In the following, for any $Q \in \Sigma$, $\langle a \rangle_{\leq q} Q$ will denote the set $\{s \in S \mid \tau_a(s, Q) \leq q\}$. Similarly for the other order relations.

NOTE 22. *If Θ is a σ -algebra, a relation $\mathcal{R}^T(\Theta)$ is of the form $\mathcal{R}(\mathcal{F})$ for some subfamily \mathcal{F} of Σ : If Γ is any algebra such that $\sigma(\Gamma) = \Theta$, then*

$$s \mathcal{R}^T(\Theta) t \iff (s, t) \in \mathcal{R}(\{\langle a \rangle_{\leq q} Q \mid a \in L, q \in \mathbb{Q}, Q \in \Gamma\}).$$

Let \mathcal{F} the family on the right-hand side, namely $\{\langle a \rangle_{\leq q} Q \mid a \in L, q \in \mathbb{Q}, Q \in \Gamma\}$. If $(s, t) \in \mathcal{R}^T(\Theta)$, then for any $a \in L, q \in \mathbb{Q}$ and $Q \in \Theta$, we have $s \in \langle a \rangle_{\leq q} Q$ iff $\tau_a(s, Q) \leq q$ iff $\tau_a(t, Q) \leq q$ iff $t \in \langle a \rangle_{\leq q} Q$. Conversely, suppose that $(s, t) \in \mathcal{R}(\mathcal{F})$. Since $\mathcal{D}_{s,t} = \{Q \in \Theta \mid \forall a \in L, \tau_a(s, Q) = \tau_a(t, Q)\}$ is a monotone class and Γ is a generating algebra for Θ such that $\Gamma \subseteq \mathcal{D}_{s,t}$, the Monotone Class Theorem yields $\Theta = \sigma(\Gamma) \subseteq \mathcal{D}_{s,t}$ for every $a \in L$.

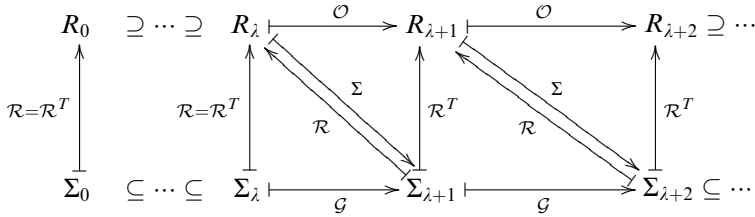


Figure 2. Chains of relations and σ -algebras induced by \mathcal{O} and \mathcal{G} (λ limit).

PROPOSITION 23. If $R_0 = \mathcal{R}(\Sigma_0) = \mathcal{R}^T(\Sigma_0)$, then for all limit ordinals λ , $\mathcal{R}(\Sigma_\lambda) = \mathcal{R}^T(\Sigma_\lambda)$.

Proof. By Note 22 there is some $\Lambda \subseteq \Sigma$ such that $\mathcal{R}^T(\Sigma_\alpha) = \mathcal{R}(\Lambda)$. From Proposition 13(5) it follows that

$$\mathcal{R}^T(\Sigma_\alpha) = \mathcal{R}(\Sigma(\mathcal{R}^T(\Sigma_\alpha))) = \mathcal{R}(\mathcal{G}(\Sigma_\alpha)) = \mathcal{R}(\Sigma_{\alpha+1}) \subseteq \mathcal{R}(\Sigma_\alpha).$$

If λ is a limit ordinal, $\Sigma_{\alpha+1} \subseteq \Sigma_\lambda$ holds for all $\alpha < \lambda$ and hence $\mathcal{R}(\Sigma_\lambda) \subseteq \mathcal{R}(\Sigma_{\alpha+1}) = \mathcal{R}^T(\Sigma_\alpha) = \mathcal{R}_\alpha$. Then, $\mathcal{R}(\Sigma_\lambda) \subseteq \bigcap_{\alpha < \lambda} \mathcal{R}_\alpha = R_\lambda = \mathcal{R}^T(\Sigma_\lambda) = \mathcal{R}(\Sigma_{\lambda+1}) \subseteq \mathcal{R}(\Sigma_\lambda)$ and the result follows. \square

In Section 5 we will construct an LMP for which $\mathcal{R}(\Sigma_{\alpha+1}) \supsetneq \mathcal{R}^T(\Sigma_{\alpha+1})$, and hence the previous equality does not hold for successor ordinals in general.

In the case $R_0 = \mathcal{R}(\Sigma_0) = \mathcal{R}^T(\Sigma_0)$, we may summarize the results up to this point in Figure 2:

COROLLARY 24. For a limit ordinal λ , if $\Sigma(\mathcal{R}(\Sigma_\lambda)) = \Sigma_\lambda$, then $\mathcal{R}(\Sigma_\lambda)$ is a state bisimulation.

Proof. $\mathcal{R}^T(\Sigma(\mathcal{R}(\Sigma_\lambda))) = \mathcal{R}^T(\Sigma_\lambda) = \mathcal{R}(\Sigma_\lambda)$. Therefore $\mathcal{R}(\Sigma_\lambda)$ is a state bisimulation. \square

We add an observation about Figure 2: If $\mathcal{G}(\Gamma) = \Gamma$, then $\mathcal{O}(\mathcal{R}^T(\Gamma)) = \mathcal{R}^T \Sigma(\mathcal{R}^T(\Gamma)) = \mathcal{R}^T(\mathcal{G}(\Gamma)) = \mathcal{R}^T(\Gamma)$. This means that a fixpoint in the lower part forces a fixpoint in the upper part. By using the example in [10] it can be seen that the converse does not hold.

LEMMA 25. Let Λ be a sub- σ -algebra of Σ such that $\Sigma(\mathcal{R}(\Lambda)) = \Lambda$. The following are equivalent:

1. Λ is stable.
2. $\mathcal{R}(\Lambda) \subseteq \mathcal{R}^T(\Lambda)$.
3. $\mathcal{R}(\Lambda)$ is a state bisimulation.

Proof. 1 implies 2 by Proposition 13(8). For $2 \Rightarrow 3$, observe that $\mathcal{R}(\Lambda) \subseteq \mathcal{R}^T(\Lambda) = \mathcal{R}^T(\Sigma(\mathcal{R}(\Lambda)))$ and this means that $\mathcal{R}(\Lambda)$ is a state bisimulation.

By virtue of Proposition 13, Item 7 implies $(S, \Sigma(\mathcal{R}(\Lambda)), \tau)$ is an LMP, but then $\Sigma(\mathcal{R}(\Lambda)) = \Lambda$ is stable. \square

EXAMPLE. The hypothesis is necessary: On $[0, 1]$, take $\Sigma = \mathcal{B}([0, 1])$, Λ to be the countable-cocountable σ -algebra and $\tau(x, A) := \delta_x(A)$ for $x \in [0, \frac{1}{2}]$ and $\tau(x, A) :=$

$\frac{1}{2}\delta_x(A)$ if $x \in (\frac{1}{2}, 1]$. Then $\Sigma(\mathcal{R}(\Lambda)) = \Sigma \neq \Lambda$, $\mathcal{R}(\Lambda) = id_{[0,1]} = \mathcal{R}^T(\Lambda)$ and Λ is not stable since, e.g., $\{x \mid \tau(x, [0, 1]) > \frac{1}{2}\} = [0, \frac{1}{2}] \notin \Lambda$. This example shows that 2 does not imply 1 in general. Since the identity relation is a state bisimulation, we also conclude that 3 does not imply 1 in general.

The σ -algebra Σ_ω corresponding to the LMP to be presented in Section 5, satisfies $\mathcal{R}^T(\Sigma_\omega) = \mathcal{R}(\Sigma_\omega)$ but $\mathcal{R}(\Sigma_\omega)$ is not a state bisimulation. Hence 2 does not imply 3 in general. This example has a stable Σ_0 but $R_0 = \mathcal{R}(\Sigma_0)$ is not state bisimulation; hence 1 does not imply 3.

We now aim to prove that Σ_λ is stable for limit λ . With the notation introduced before Note 22, we observe that Γ is stable if and only if $\forall a \in L \forall q \in \mathbb{Q} \forall Q \in \Gamma \langle a \rangle_{\leq q} Q \in \Gamma$. Given a label a , we define the following set:

$$\mathcal{A}_a := \{Q \in \Sigma \mid \forall q \in \mathbb{Q} (\langle a \rangle_{\leq q} Q \in \Sigma_\lambda \wedge \langle a \rangle_{< q} Q \in \Sigma_\lambda)\}.$$

Then, to show that Σ_λ is stable it is enough to prove $\Sigma_\lambda \subseteq \mathcal{A}_a$ for all $a \in L$.

LEMMA 26. *If λ is a limit ordinal, then $\forall a \in L \forall \alpha < \lambda \Sigma_\alpha \subseteq \mathcal{A}_a$.*

Proof. Let $\alpha < \lambda$ and $Q \in \Sigma_\alpha$. We will show that for every label $a \in L$ and for all $q \in \mathbb{Q}$ the sets $\langle a \rangle_{\leq q} Q$ and $\langle a \rangle_{< q} Q$ are in $\Sigma_{\alpha+1} = \Sigma(\mathcal{R}^T(\Sigma_\alpha)) \subseteq \Sigma_\lambda$. Since $\tau_a(\cdot, Q)$ is measurable, $\langle a \rangle_{\leq q} Q = \tau_a(\cdot, Q)^{-1}(\{0, q\}) \in \Sigma$. To check that $\langle a \rangle_{\leq q} Q$ is $\mathcal{R}^T(\Sigma_\alpha)$ -closed, note that

$$\begin{aligned} s \mathcal{R}^T(\Sigma_\alpha) t &\iff \forall a \in L \forall A \in \Sigma_\alpha \tau_a(s, A) = \tau_a(t, A) \\ &\iff \forall a \in L \forall A \in \Sigma_\alpha \forall q \in \mathbb{Q} (\tau_a(s, A) \leq q \text{ iff } \tau_a(t, A) \leq q) \\ &\iff \forall a \in L \forall A \in \Sigma_\alpha \forall q \in \mathbb{Q} (s \in \langle a \rangle_{\leq q} A \text{ iff } t \in \langle a \rangle_{\leq q} A). \end{aligned}$$

The proof for $\langle a \rangle_{< q} Q$ is similar. □

- LEMMA 27. 1. *If $\{A_n\}_{n \in \omega}$ is a non-decreasing sequence of measurable sets, then for all $a \in L$ and for all $q \in \mathbb{Q}$, $\langle a \rangle_{\leq q} \bigcup_{n \in \omega} A_n = \bigcap_{n \in \omega} \langle a \rangle_{\leq q} A_n$.*
 2. *If $\{B_n\}_{n \in \omega}$ is a non-increasing sequence of measurable sets, then for all $a \in L$ and for all $q \in \mathbb{Q}$, $\langle a \rangle_{< q} \bigcap_{n \in \omega} B_n = \bigcup_{n \in \omega} \langle a \rangle_{< q} B_n$.*
 3. \mathcal{A}_a is a monotone class.

Proof. 1. In general, if $A \subseteq B$, then $\langle a \rangle_{\leq q} B \subseteq \langle a \rangle_{\leq q} A$ by monotonicity of measures. Thus we have (\subseteq) . For (\supseteq) , if $s \in S$ satisfies $\forall n \in \omega \tau_a(s, A_n) \leq q$, the continuity of the measure $\tau_a(s, \cdot)$ yields $\tau_a(s, \bigcup_{n \in \omega} A_n) = \lim \tau_a(s, A_n) \leq q$.
 2. Similarly to 1,

$$\begin{aligned} \bigcap_{n \in \omega} B_n \subseteq B_m &\implies \langle a \rangle_{< q} \bigcap_{n \in \omega} B_n \supseteq \langle a \rangle_{< q} B_m \\ &\implies \langle a \rangle_{< q} \bigcap_{n \in \omega} B_n \supseteq \bigcup_{m \in \omega} \langle a \rangle_{< q} B_m. \end{aligned}$$

For the other inclusion, if $s \in \langle a \rangle_{< q} \bigcap_{n \in \omega} B_n$, continuity of the measure $\tau_a(s, \cdot)$ implies $q > \tau_a(s, \bigcap_{n \in \omega} B_n) = \lim \tau(s, B_n)$. Then, there exists $n \in \omega$ such that $\tau_a(s, B_n) < q$ and hence $s \in \langle a \rangle_{< q} B_n$.

3. Let $\{A_n\}_{n \in \omega} \subseteq \mathcal{A}_a$ be a non-decreasing sequence of sets. Let $q \in \mathbb{Q}$; part 1 allows us to conclude $\langle a \rangle_{\leq q} \bigcup_{n \in \omega} A_n = \bigcap_{n \in \omega} \langle a \rangle_{\leq q} A_n \in \Sigma_\lambda$ and also

$$\langle a \rangle_{<q} \bigcup_{n \in \omega} A_n = \bigcup_{m \in \omega} \langle a \rangle_{\leq q-1/m} (\bigcup_{n \in \omega} A_n) = \bigcup_{m \in \omega} \bigcap_{n \in \omega} (\langle a \rangle_{\leq q-1/m} A_n) \in \Sigma_\lambda.$$

Then, $\bigcup_{n \in \omega} A_n \in \mathcal{A}_a$.

Now let $\{B_n\}_{n \in \omega} \subseteq \mathcal{A}_a$ be non-increasing and let $q \in \mathbb{Q}$. The second part yields $\langle a \rangle_{<q} \bigcap_{n \in \omega} B_n = \bigcup_{n \in \omega} \langle a \rangle_{<q} B_n \in \Sigma_\lambda$ and also

$$\langle a \rangle_{\leq q} \bigcap_{n \in \omega} B_n = \bigcap_{m \in \omega} \langle a \rangle_{<q+1/m} (\bigcap_{n \in \omega} B_n) = \bigcap_{m \in \omega} \bigcup_{n \in \omega} (\langle a \rangle_{<q+1/m} B_n) \in \Sigma_\lambda.$$

Then, $\bigcap_{n \in \omega} B_n \in \mathcal{A}_a$. □

THEOREM 28. Σ_λ is a stable σ -algebra for any limit ordinal λ .

Proof. Since $\bigcup_{\alpha < \lambda} \Sigma_\alpha$ is an algebra of sets, Lemma 26, Lemma 27(3) and the Monotone Class Theorem yield $\Sigma_\lambda = \sigma(\bigcup_{\alpha < \lambda} \Sigma_\alpha) \subseteq \mathcal{A}_a$ for any $a \in L$. □

§4. The Zhou Ordinal. Zhou expressed state bisimilarity as a fixpoint:

THEOREM 29. [12, Theorem 3.4] State bisimilarity \sim_s is the greatest fixpoint of \mathcal{O} .

By direct application of Proposition 14 we get the following:

THEOREM 30. Let R be an equivalence relation on S such that $\sim_s \subseteq R$ and $\mathcal{O}(R) \subseteq R$, then there exists an ordinal α such that $|\alpha| \leq |S|$ and $\mathcal{O}^\alpha(R) = \sim_s$.

COROLLARY 31. [12, Theorem 4.1] State bisimilarity \sim_s can be obtained by iterating \mathcal{O} from the total relation or from event bisimilarity \sim_e .

Proof. Apply Theorem 30 and Corollary 16. □

Thanks to this result we may define the following concept.

DEFINITION 32. The **Zhou ordinal** of an LMP \mathbb{S} , denoted $\mathfrak{Z}(\mathbb{S})$, is the minimum α such that $\mathcal{O}^\alpha(\sim_e) = \sim_s$. The Zhou ordinal of a class \mathcal{A} of processes, denoted $\mathfrak{Z}(\mathcal{A})$, is the supremum of the class $\{\mathfrak{Z}(\mathbb{S}) \mid \mathbb{S} \in \mathcal{A}\}$ if it is bounded or ∞ otherwise.

We will focus on the study of the Zhou ordinal of the class \mathcal{S} of separable LMPs. It is immediate that it is bounded by the cardinal successor of $|\mathbb{R}|$.

LEMMA 33. $\mathfrak{Z}(\mathcal{S}) \leq (2^{\aleph_0})^+$.

Proof. Every separable metrizable space S satisfies $|S| \leq 2^{\aleph_0}$, and hence the bound follows from Theorem 30. □

Next we provide the last technical ingredient for the constructions to be performed for our main Theorems 37 and 38. It is a simple though essential device to enlarge a given LMP in such a way that the original structure is “isolated” and it does not produce any side effect on the enlargement.

Suppose that $\mathbb{T} = (T, \Sigma, \{\tau_a \mid a \in L\})$ is an LMP with label set L . Let $e \notin T$ be a new state and let $L' = L \cup \{\nabla, \dagger\}$ be an expansion of the label set by two new actions. Over the measurable space $(T^*, \Sigma^*) := (T \oplus \{e\}, \Sigma \oplus \{\{e\}, \emptyset\})$, we define a new LMP \mathbb{T}^* with kernels $\{\tau_a^* \mid a \in L\} \cup \{\tau_\nabla, \tau_\dagger\}$ given by

$$\begin{aligned} \tau_a^*(r, Q) &:= \chi_T(r) \cdot \tau_a(r, Q \cap T), \\ \tau_\nabla(r, Q) &:= \chi_T(r) \cdot \delta_e(Q), \\ \tau_\dagger(r, Q) &:= \chi_{\{e\}}(r) \cdot \delta_e(Q). \end{aligned} \tag{1}$$

It is clear that \mathbb{T}^* is an LMP. The kernel τ_{∇} allows, with probability 1, a transition to e from each state $t \in T$, and τ_{\dagger} only loops around e .

The use of a new state and two extra kernels (instead of just a single new kernel) stems from the fact that in this way it is immediate that \mathcal{R}^T (as a set operator) is the same, modulo e , for \mathbb{T} and \mathbb{T}^* . This has the following consequence, which will be used in the sequel.

LEMMA 34. *The Zhou ordinal is invariant under the map $\mathbb{T} \mapsto \mathbb{T}^*$, namely: $\mathfrak{Z}(\mathbb{T}^*) = \mathfrak{Z}(\mathbb{T})$.*

The $\mathbb{T} \mapsto \mathbb{T}^*$ construction will be used in conjunction with the next lemma, where \bar{S} is the intended enlargement that we referred to above.

LEMMA 35. *Let $\mathbb{S} = (S, \Sigma, \{\tau_a \mid a \in L\})$ be an LMP and let $\mathbb{S}' = (S', \Sigma', \{\tau'_a \mid a \in L\})$ be an LMP over a direct sum $(S' \oplus \bar{S}, \Sigma \oplus \bar{\Sigma})$ such that:*

- *For all $r \in S$ and $a \in L$, $\tau'_a(r, Q) = \tau_a(r, Q \cap S)$.*
- *$\Sigma'_0 = \sigma(\llbracket \mathcal{L} \rrbracket_{\mathbb{S}'})$ and $\Sigma_0 = \sigma(\llbracket \mathcal{L} \rrbracket_{\mathbb{S}})$.*
- *$S \in \Sigma'_0$.*

Then $\Sigma'_\alpha \upharpoonright S = \Sigma_\alpha \subseteq \Sigma'_\alpha$ (equivalently, $\Sigma'_\alpha = \Sigma_\alpha \oplus \Sigma'_\alpha \upharpoonright \bar{S}$) and $R'_\alpha = R_\alpha \cup R'_\alpha \upharpoonright \bar{S}$ hold for every $\alpha \geq 0$.

Regarding the equation that involves R'_α , it says that to know such relation it is enough to determine it in each direct summand separately. One interpretation of this is that whenever $S \in \Sigma'_0$, no relevant information about \mathbb{S} is lost in the direct sum.

The proofs of the main results of this section are based on further analysis of the LMP \mathbb{U} from Example 6, which was the first example of a process with positive Zhou ordinal. Actually, $\mathfrak{Z}(\mathbb{U}) = 1$ as highlighted in Example 12.

A key idea behind the definition of \mathbb{U} is that the non-measurable set V is essentially the only set that distinguishes m_0 from m_1 and hence s from t . This V can become “available” when all the rational intervals can be used to separate points in $I = (0, 1)$. From this approach one can control the unveiling of V using $B_n = (0, q_n)$ to become “available as tests” simultaneously or *in parallel*, and this is the reason why state bisimilarity is reached in one step in \mathbb{U} . The same pattern will be used in Theorem 37. On the other hand a *serial* approach to the uncovering of the family $\{B_n\}$ will be followed in the proof of Theorem 38.

We will prove our first important result about $\mathfrak{Z}(S)$, namely, that it is a limit ordinal. In order to do this we first give the construction of an LMP that will play an essential role in the aforementioned result. Since we will be exclusively concerned with the Zhou ordinal from now on, Σ_0 will always be the least stable σ -algebra $\sigma(\llbracket \mathcal{L} \rrbracket)$ of the LMP in consideration and $R_0 := \mathcal{R}(\Sigma_0)$.

Start with any \mathbb{T} such that $\mathfrak{Z}(\mathbb{T}) = \alpha + 1$. Consider the LMP \mathbb{T}^* constructed in (1), that for simplicity we will denote by $\mathbb{S} = (S, \Sigma, \{\tau_m \mid m \in \omega\} \cup \{\tau_{\nabla}, \tau_{\dagger}\})$. By Lemma 34, $\mathfrak{Z}(\mathbb{S}) = \alpha + 1$. Let $z, y \in S \setminus \{e\}$ be such that $z R_\alpha y$ but $z \not R_{\alpha+1} y$. Then there exist $A_0 \in \Sigma_{\alpha+1} \setminus \Sigma_\alpha$ and $n \in \omega$ such that $\tau_n(z, A_0) \neq \tau_n(y, A_0)$. We now define a new process: Let

$$\mathbb{S}' = (S \oplus I \oplus \{s, t\}, \Sigma \oplus \mathcal{B}_V \oplus \mathcal{P}(\{s, t\}), \{\tau'_m\}_{m \in \omega} \cup \{\tau'_{\nabla}, \tau'_{\dagger}, \tau'_{\infty}\}),$$

where

$$\tau'_m(r, Q) := \begin{cases} \tau_m(r, Q \cap S), & \text{if } r \in S, \\ \tau_n(z, Q \cap S), & \text{if } r \in I, r < q_m, \\ \tau_n(y, Q \cap S), & \text{if } r \in I, r \geq q_m, \\ 0, & \text{if } r \in \{s, t\}, \end{cases}$$

$$\tau'_\square(r, Q) := \chi_S(r) \cdot \tau_\square(r, Q \cap S) \quad \text{for } \square \in \{\nabla, \dagger\},$$

$$\tau'_\infty(r, Q) := \chi_{\{s\}}(r) \cdot m_0(Q \cap I) + \chi_{\{t\}}(r) \cdot m_1(Q \cap I).$$

We will call Σ' the σ -algebra of \mathbb{S}' and anything referred to this LMP will be primed: $\Sigma'_\alpha, R'_\alpha, \sim'_s$.

This new process will act as an amalgam of \mathbb{S} and \mathbb{U} with x replaced by S : Each state in I behaves either as z or y according to the label $m \in \omega$, and the process continues inside \mathbb{S} afterwards. Labels ∇ and \dagger allow to separate the LMP \mathbb{S} from the rest in such a way that its behavior is independent of the enlargement. If that were not the case, event bisimilarity could identify states of S and $I \cup \{s, t\}$, and therefore restrict the sets that appear in $\Sigma'_\alpha \upharpoonright S$. Observe that \mathbb{S}' will end up with infinitely many different kernels, even though \mathbb{S} had only finitely many. Also note that for $r \in I$, there are only three possible values of $\tau'(r, Q)$: $\tau_n(z, Q \cap S)$, $\tau_n(y, Q \cap S)$ or 0; this is very similar to \mathbb{U} , where there were only two possible values of $\tau_n(r, Q)$.

LEMMA 36. \mathbb{S}' is an LMP. Moreover, $\forall \beta \Sigma'_\beta \upharpoonright S = \Sigma_\beta \subseteq \Sigma'_\beta$ and $R'_\beta = R_\beta \cup R'_\beta \upharpoonright I \cup \{s, t\}$.

Proof. To show that \mathbb{S}' is an LMP, we only need to check that τ'_a is a Markov kernel for every $a \in \omega \cup \{\infty, \nabla, \dagger\}$.

If $Q \in \Sigma'$, measurability of $\tau'_m(\cdot, Q)$ follows from the fact that $\tau_m(\cdot, Q \cap S)$ is measurable for all $m \in \omega$ and from the measurability of the sets $(0, q_m)$ and $\{s, t\}$. Measurability of $\tau'_\square(\cdot, Q)$ for $\square \in \{\nabla, \dagger, \infty\}$ only depends on the measurability of the characteristic functions involved. Finally, for fixed $r \in S'$, all maps $\tau'_a(r, \cdot)$ are clearly subprobability measures.

For the second statement, consider the LMP obtained by adding the zero kernel with ∞ label to \mathbb{S} . This operation does not modify R_α nor Σ_α . Moreover, it is immediate that for all $r \in S$ and labels a , $\tau'_a(r, Q) = \tau_a(r, Q \cap S)$ holds. Note that also $S \in \Sigma'_0$, since $\llbracket \langle \dagger \rangle_{>0} \rrbracket_{\mathbb{S}'} \cup \llbracket \langle \nabla \rangle_{>0} \rrbracket_{\mathbb{S}'} = S$. In this way, we may apply Lemma 35 to \mathbb{S} and the measurable space $(I \oplus \{s, t\}, \mathcal{B}_V \oplus \mathcal{P}(\{s, t\}))$ to obtain the result. \square

We are now ready to prove the previously announced result.

THEOREM 37. $\mathfrak{Z}(S)$ is a limit ordinal.

Proof. First observe that $\mathfrak{Z}(S) > 0$ as shown in [10]. Suppose by way of contradiction that $\mathfrak{Z}(S) = \alpha + 1$ for some $\alpha \geq 0$. Then there must exist a separable LMP \mathbb{T} such that $\mathfrak{Z}(\mathbb{T}) = \alpha + 1$. Now consider the LMP \mathbb{S}' as in the previous construction. We show that $\mathfrak{Z}(\mathbb{S}') \geq \alpha + 2$. To see this it is enough to prove that $s R'_{\alpha+1} t$ but $s \not R'_{\alpha+2} t$. For the first condition, let us show that $\Sigma'_{\alpha+1} \upharpoonright I = \{\emptyset, I\}$. Let $Q \in \Sigma'_{\alpha+1} = \Sigma'(\mathcal{R}^T(\Sigma'_\alpha))$ and assume $Q \cap I \neq \emptyset$; we show that $Q \cap I = I$. Let $r_0 \in Q \cap I$ and $r \in I$. Suppose that $r_0 \not R^T(\Sigma'_\alpha) r$; then there exist $m \in \omega$ and $B \in \Sigma'_\alpha$ such that $\tau'_m(r_0, B) \neq \tau'_m(r, B)$, i.e., $\tau_m(z, B \cap S) \neq \tau_m(y, B \cap S)$. By Lemma 36, $B \cap S \in \Sigma_\alpha$, then $z \not R^T(\Sigma'_\alpha) y$; but this is absurd since we chose z, y in such a way they are indeed related. It follows that

$r_0 \mathcal{R}^T(\Sigma'_\alpha) r$ and since Q is $\mathcal{R}^T(\Sigma'_\alpha)$ -closed, $r \in Q \cap I$. Note that this yields $R'_\alpha \upharpoonright I = I \times I$. To show $(s, t) \in R'_{\alpha+1} = \mathcal{R}^T(\Sigma'_{\alpha+1})$, consider $\emptyset \neq Q \in \Sigma'_{\alpha+1}$. By the previous calculation, $Q \cap I = I$; therefore $\tau'_\infty(s, Q) = 1 = \tau'_\infty(t, Q)$. For the remaining labels $a \in \omega \cup \{\nabla, \dagger\}$ we have $\tau'_a(s, Q) = 0 = \tau'_a(t, Q)$.

We now show that $s R'_{\alpha+2} t$. Recall that we had chosen z, y and $A_0 \in \Sigma_{\alpha+1} \setminus \Sigma_\alpha$ such that $\tau_n(z, A_0) \neq \tau_n(y, A_0)$ for some $n \in \omega$. By Lemma 36, $A_0 \in \Sigma'_{\alpha+1}$ and from this we conclude $R'_{\alpha+1} \upharpoonright I = \mathcal{R}^T(\Sigma'_{\alpha+1}) \upharpoonright I = \text{id}_I$. We also observe that $I = S' \setminus (S \cup \llbracket (\infty)_{>0} \top \rrbracket) \in \Sigma'_0$; therefore $\Sigma'_{\alpha+2} \upharpoonright I = \{A \subseteq I \mid A \in \Sigma'(R'_{\alpha+1})\} = \Sigma' \upharpoonright I = \mathcal{B}_V$. Then we have $V \in \Sigma'_{\alpha+2}$ and using that set with the transition labelled by ∞ we obtain $s R'_{\alpha+2} t$. □

It can be deduced from the proof of the previous theorem that from every separable process with Zhou ordinal $\alpha + 1$ another one can be constructed with ordinal equal to $\alpha + 2$. In spite of this, this construction does not allow to construct a process with positive Zhou ordinal from one having null Zhou ordinal (i.e., having the Hennessy–Milner property).

In the next theorem, the *cofinality* $\text{cf}(\lambda)$ of a limit ordinal λ is the least order type (equivalently, the least cardinal) of an unbounded subset of λ .

THEOREM 38. $\text{cf}(\mathfrak{Z}(\mathcal{S})) > \omega$.

Proof. Towards a contradiction, suppose that for every $m \in \omega$ we have a separable $\mathbb{S}_m = (S^m, \Sigma^m, \{\tau_n^m\}_{n \in \omega})$ with label set $\{(m, n) \mid n \in \omega\}$ such that $\zeta_m := \mathfrak{Z}(\mathbb{S}_m)$ satisfy $\sup_{m \in \omega} \zeta_m = \mathfrak{Z}(\mathcal{S})$. We will assume that these LMPs have gone through the construction given in (1); this way each process now has two distinguished labels, which for ease of reference we call (m, ∇) and (m, \dagger) , that allow them to be differentiated from each other with formulas.

We can assume $\zeta_0 > 0$ and also that $\{\zeta_m\}_{m \in \omega}$ is a strictly increasing sequence; for convenience, we set $\zeta_{-1} := 0$. In this way $\zeta_{m-1} < \zeta_m$ for all $m \geq 0$, and hence we can choose $x_m, y_m \in S^m$ such that $x_m R_{\zeta_{m-1}}^m y_m$ but $x_m \not R_{\zeta_m}^m y_m$. Then there is a set $A_m \in \Sigma_{\zeta_m}^m \setminus \Sigma_{\zeta_{m-1}}^m$ such that for some $i \in \omega$ we have $\tau_i^m(x_m, A_m) \neq \tau_i^m(y_m, A_m)$. By reordering the labels of the Markov kernels, we can assume that $i \in \omega$ is exactly m .

Let us define a new LMP with label set $L := \{(m, n) \mid m, n \in \omega\} \cup \{\infty\}$:

$$\mathbb{S} := ((\bigoplus_{m \in \omega} S^m) \oplus I \oplus \{s, t\}, (\bigoplus_{m \in \omega} \Sigma^m) \oplus \mathcal{B}_V \oplus \mathcal{P}(\{s, t\}), \{\tilde{\tau}_n^m\}_{m, n \in \omega} \cup \{\tilde{\tau}_\infty\}),$$

where the kernels are given by

$$\tilde{\tau}_n^m(r, Q) = \begin{cases} \tau_n^m(r, Q \cap S^m), & \text{if } r \in S^m, \\ \tau_m^m(x_m, Q \cap S^m), & \text{if } r \in (0, q_m) \text{ and } m = n, \\ \tau_m^m(y_m, Q \cap S^m), & \text{if } r \in [q_m, 1) \text{ and } m = n, \\ 0, & \text{otherwise,} \end{cases}$$

$$\tilde{\tau}_\infty(r, Q) = \chi_{\{s\}}(r) \cdot \mathfrak{m}_0(Q \cap I) + \chi_{\{t\}}(r) \cdot \mathfrak{m}_1(Q \cap I).$$

In this case the LMP \mathbb{S} is an amalgam of the sum of all of the \mathbb{S}^m and \mathbb{U} . The sets $(0, q_n) = B_n$ will become available successively, using a serial approach to uncovering the non-measurable set V . In this way we can surpass the limit of the Zhou ordinals of the \mathbb{S}^m .

We will call (S, Σ) the measurable space of \mathbb{S} . It is easy to see that this indeed defines an LMP and the separability of the base space follows from the separability of each of

the countably many summands that make it up. We will show that $\mathfrak{Z}(\mathbb{S}) \geq \mathfrak{Z}(\mathcal{S}) + 1$, reaching a contradiction. For this, it is enough to verify that $(s, t) \in R_{\mathfrak{Z}(\mathcal{S})} \setminus R_{\mathfrak{Z}(\mathcal{S})+1}$. This will be implied by the facts $\forall \eta \leq \mathfrak{Z}(\mathcal{S}) \Sigma_\eta \upharpoonright I \subseteq \mathcal{B}(I)$ and $V \in \Sigma_{\mathfrak{Z}(\mathcal{S})+1} \setminus \Sigma_{\mathfrak{Z}(\mathcal{S})}$ which in turn are a consequence of the equality

$$\Sigma_\eta \upharpoonright (\bigoplus_{m \in \omega} S^m) \oplus I = (\bigoplus_{m \in \omega} \Sigma_\eta^m) \oplus \Theta_\eta, \tag{2}$$

for all $\eta \leq \mathfrak{Z}(\mathcal{S})$, where Θ_η is the σ -algebra on I generated by the intervals $\{(0, q_m) \mid \zeta_m < \eta\}$.

Before proving this, we notice that for each $m \in \omega$, we can add to S^m zero kernels τ_∞^m, τ_n^j ($j \neq m$) and get the property $\forall r \in S \forall a \in L \tilde{\tau}_a(r, Q) = \tau_a(r, Q \cap S)$, while not changing Σ_η^m nor R_η^m . Also, thanks to the distinguished labels (m, ∇) and (m, \dagger) (which cannot correspond to the label (m, m) in S^m), we have $S^m = \llbracket \langle (m, \dagger) \rangle_{>0} \top \rrbracket \cup \llbracket \langle (m, \nabla) \rangle_{>0} \top \rrbracket \in \Sigma_0$. This way, all the hypotheses of Lemma 35 are satisfied. Then, for each $m \in \omega$ and η we have $\Sigma_\eta = \Sigma_\eta^m \oplus \Sigma_\eta \upharpoonright (S \setminus S^m)$ and $R_\eta = R_\eta^m \cup R_\eta \upharpoonright (S \setminus S^m)$. Using the fact that there are countably many summands and also that $I, \{s, t\} \in \Sigma_0 \subseteq \Sigma_\eta$ (because $\{s, t\} = \llbracket \langle \infty \rangle_{>0} \top \rrbracket$), for all η we can conclude

$$\Sigma_\eta = \bigoplus_{m \in \omega} \Sigma_\eta^m \oplus \Sigma_\eta \upharpoonright I \oplus \Sigma_\eta \upharpoonright \{s, t\}.$$

So all we have to do now is to show by induction on η that $\Sigma_\eta \upharpoonright I = \Theta_\eta$. If $\eta = 0$, then obviously $\Theta_0 = \{\emptyset, I\}$, so we have to show that $\Sigma_0 \upharpoonright I = \sigma(\llbracket \mathcal{L} \rrbracket) \upharpoonright I$ is trivial. In order to do this, it is enough to show that $\{Q \in \Sigma_0 \mid Q \cap I \in \{\emptyset, I\}\}$ is stable. Assume that $Q \in \Sigma_0$ satisfies $Q \cap I \in \{\emptyset, I\}$ and $\langle (a) \rangle_{>q} Q \cap I \neq \emptyset$; hence $a = (m, n)$ for some $m, n \in \omega$ (since it is obvious from the definition of $\tilde{\tau}_\infty$ that $a \neq \infty$). Then there is $r \in I$ such that $\tilde{\tau}_n^m(r, Q) > q$. It follows that $m = n$; otherwise the kernel would equal zero.

From $Q \in \Sigma_0$ we have $Q \cap S^m \in \Sigma_0^m \subseteq \Sigma_{\zeta_{m-1}}^m$ and considering $x_m R_{\zeta_{m-1}} y_m$, we conclude that $\tilde{\tau}_m^m(\cdot, Q)$ is constant on I . This yields $r' \in \langle (a) \rangle_{>q} Q$ for every $r' \in I$. This shows that $\{Q \in \Sigma_0 \mid Q \cap I \in \{\emptyset, I\}\}$ is stable. As this class is easily seen to be a σ -algebra, we have $\sigma(\llbracket \mathcal{L} \rrbracket) = \Sigma_0 \subseteq \{Q \in \Sigma_0 \mid Q \cap I \in \{\emptyset, I\}\}$ and therefore the result holds for $\eta = 0$.

Assume now that $\Sigma_\eta \upharpoonright I = \Theta_\eta$. Notice that the kernels in \mathbb{S} only depend on one, and only one, of the restrictions to S^m and I , and use this together with the IH to obtain

$$\begin{aligned} \mathcal{R}^T(\Sigma_\eta) &= \mathcal{R}^T(\Sigma_\eta \upharpoonright \bigoplus_{m \in \omega} S^m \oplus I) = \mathcal{R}^T(\bigoplus_{m \in \omega} \Sigma_\eta^m \oplus \Theta_\eta) \\ &= \mathcal{R}^T(\bigoplus_{m \in \omega} \Sigma_\eta^m) \cap \mathcal{R}^T(\Theta_\eta). \end{aligned}$$

As $\mathcal{R}^T(\Theta_\eta) = (S \setminus \{s, t\} \times S \setminus \{s, t\}) \cup \{(s, t), (t, s)\}$, then R_η is the disjoint union $R_\eta = (\bigcup_{m \in \omega} R_\eta^m) \cup (\mathcal{R}^T(\bigoplus_{m \in \omega} \Sigma_\eta^m) \upharpoonright I) \cup \{(s, t), (t, s)\}$. Therefore, $A \subseteq I$ is R_η -closed iff it is $\mathcal{R}^T(\bigoplus_{m \in \omega} \Sigma_\eta^m)$ -closed. Also, from the choice of x_m, y_m we deduce that $\mathcal{R}^T(\bigoplus_{m \in \omega} \Sigma_\eta^m) \upharpoonright I = \mathcal{R}(\{(0, q_n) \mid \zeta_n \leq \eta\}) \upharpoonright I$. From this we have

$$\begin{aligned} \Sigma_{\eta+1} \upharpoonright I &= \{A \in \Sigma_{\eta+1} \mid A \subseteq I\} = \{A \in \Sigma \mid A \subseteq I \wedge \text{is } R_\eta\text{-closed}\} \\ &= \{A \in \mathcal{B}_V \mid A \text{ is } \mathcal{R}^T(\bigoplus_{m \in \omega} \Sigma_\eta^m)\text{-closed}\} \\ &= \sigma(\{(0, q_n) \mid \zeta_n \leq \eta\}) = \Theta_{\eta+1}. \end{aligned}$$

For the limit case, assume $\Sigma_\eta \upharpoonright I = \Theta_\eta$ for all $\eta < \lambda$. Then we have the following calculation:

$$\Sigma_\lambda \upharpoonright I = \sigma(\bigcup_{\eta < \lambda} \Sigma_\eta) \upharpoonright I = \sigma(\bigcup_{\eta < \lambda} (\Sigma_\eta \upharpoonright I)) = \sigma(\bigcup_{\eta < \lambda} \Theta_\eta) = \Theta_\lambda.$$

This concludes the proof by induction of Equation (2) and thus ends the proof of the theorem. \square

COROLLARY 39. $\mathfrak{Z}(\mathcal{S}) \geq \omega_1$.

§5. The example. In this section we construct, for each ordinal $\beta \leq \omega_1$, an LMP $\mathbb{S}(\beta)$ such that for β limit, $\mathfrak{Z}(\mathbb{S}(\beta)) = \beta$. For this, we take the set $I \times \beta$ together with the product σ -algebra $\Sigma := \mathcal{B}_V \otimes \mathcal{P}(\beta)$ where V denotes a Lebesgue non-measurable set.

Let $\{C_n\}_{n \geq 2}$ be the family of open rational intervals included in I and set $C_0 := V$ and $C_1 := V^c$; we have that $\{C_n\}_{n \in \omega}$ generates \mathcal{B}_V . We now define a hierarchy of sets $\Sigma_\xi^V(I)$ totally analogous to the Borel hierarchy. $\Sigma_1^V(I)$ is the family of (countable) unions of sets in $\{C_n\}_{n \in \omega}$. The members of $\Pi_\xi^V(I)$ are the complements of sets in $\Sigma_\xi^V(I)$ and $\Sigma_\xi^V(I) := \{\bigcup_{n \in \omega} A_n \mid A_n \in \Pi_{\xi_n}^V(I), \xi_n < \xi\}$, for $\xi > 1$. Note that $\Sigma_1^V(I)$ includes all the open subsets of I and their unions with V .

Given $Q \subseteq I \times \beta$, the *sections* of Q are the sets $Q_\alpha := \{r \mid (r, \alpha) \in Q\}$ for $\alpha < \beta$ (to avoid confusion we will only use greek subindices for sections). Sometimes we will call Q_α “ α -section” to make the ordinal explicit. The sets $I \times \{\alpha\}$ will be called *fibers*. For Q in $\mathcal{B}_V \otimes \mathcal{P}(\beta)$, each section Q_α lies in $\Sigma_\xi^V(I)$ for some ξ . We say that the *complexity* of Q at α is $\text{comp}(Q, \alpha) := \min\{\xi \mid Q_\alpha \in \Sigma_\xi^V(I)\}$, and the (total) complexity of Q is $\text{comp}(Q) := \sup_{\alpha < \beta} \text{comp}(Q, \alpha)$. Sets in $\mathcal{B}_V \otimes \mathcal{P}(\beta)$ can be characterized in terms of this complexity measure.

LEMMA 40. $Q \in \mathcal{B}_V \otimes \mathcal{P}(\beta)$ if and only if $\text{comp}(Q) < \omega_1$.

Proof. (\Rightarrow) Let us verify that $\mathcal{A} = \{A \subseteq I \times \beta \mid \text{comp}(A) < \omega_1\}$ is a σ -algebra. Assume $A \in \mathcal{A}$. Since $\text{comp}(A^c, \alpha) \leq \text{comp}(A, \alpha) + 1$ then $A^c \in \mathcal{A}$. Now assume that $\{A_n\}_{n \in \omega} \subseteq \mathcal{A}$. Then $\alpha_n := \text{comp}(A_n) < \omega_1$ for all $n \in \omega$. From this it follows that $\text{comp}(\bigcup_{n \in \omega} A_n) \leq \sup_{n \in \omega} (\alpha_n + 1) < \omega_1$, and therefore \mathcal{A} is a σ -algebra. Since \mathcal{A} includes all the measurable rectangles, we have $\mathcal{B}_V \otimes \mathcal{P}(\beta) \subseteq \mathcal{A}$.

(\Leftarrow) We show by induction on ξ that $\text{comp}(Q) = \xi < \omega_1 \implies Q \in \mathcal{B}_V \otimes \mathcal{P}(\beta)$. If $\text{comp}(Q) = 1$, then for all $\alpha < \beta$, $Q_\alpha = \bigcup\{C_n \mid C_n \subseteq Q_\alpha\}$ and therefore $Q = \bigcup_{n \in \omega} (C_n \times \{\alpha \mid C_n \subseteq Q_\alpha\}) \in \mathcal{B}_V \otimes \mathcal{P}(\beta)$. Assume the result for all η with $\eta < \xi < \omega_1$ and, moreover, assume $\text{comp}(Q) = \xi$. Then $\forall \alpha < \beta$, $Q_\alpha \in \Sigma_\xi^V(I)$. Hence $Q_\alpha = \bigcup_{n < \omega} A_n^\alpha$ for some $A_n^\alpha \in \Pi_{\xi_n(\alpha)}^V(I) \subseteq \Sigma_{\xi_n(\alpha)+1}^V(I)$ and $\xi_n(\alpha) < \xi$ is non-decreasing. Let $\{\theta_n\}_{n \in \omega}$ such that $\theta_n + 1$ is a non-decreasing sequence with limit ξ . If we set $\tilde{A}_n^\alpha = \bigcup_{m \leq n} \{A_m^\alpha \mid A_m^\alpha \in \Sigma_{\theta_n}^V(I)\}$, then we have $\forall \alpha \tilde{A}_n^\alpha \in \Sigma_{\theta_n}^V(I)$ and $Q_\alpha = \bigcup_{n \in \omega} \tilde{A}_n^\alpha$. By the IH, for every $n \in \omega$, $\mathcal{B}_V \otimes \mathcal{P}(\beta)$ contains the sets $C_n = \bigcup_{\alpha < \beta} (\tilde{A}_n^\alpha \times \{\alpha\})$ whose α -section is \tilde{A}_n^α , with complexity $\theta_n < \xi$. It follows that $Q = \bigcup_{n \in \omega} C_n \in \mathcal{B}_V \otimes \mathcal{P}(\beta)$. \square

We now define a denumerable family of Markov kernels. As before, fix an enumeration $\{q_n\}_{n \in \omega}$ of the rational numbers in I . Define $\alpha_n(0) := 0$ ($n \in \omega$); and for each successor ordinal $\eta + 1$, let $\alpha_n(\eta + 1) := \eta$ ($n \in \omega$). For limit λ we choose $\{\alpha_n(\lambda)\}_{n \in \omega}$ to be a strictly increasing cofinal sequence in $\lambda - \{0\}$ of order type ω .

Recall that Theorem 3 gives us two extensions m_0 and m_1 of the Lebesgue measure m such that $m_0(V) \neq m_1(V)$. For each $n \in \omega$ define $\tau_n : (I \times \beta) \times (\mathcal{B}_V \otimes \mathcal{P}(\beta)) \rightarrow [0, 1]$ as follows:

$$\tau_n((x, \eta), A) = \begin{cases} x \cdot m_0(A_0), & \eta = 0, \\ m_0(A_{\alpha_n(\eta)}), & \eta > 0, x \in (0, q_n), \\ m_1(A_{\alpha_n(\eta)}), & \eta > 0, x \in [q_n, 1). \end{cases}$$

Here $A_{\alpha_n(\eta)}$ is the $\alpha_n(\eta)$ -section of A defined before Lemma 40. As in the previous results, the definition of the kernels is motivated by the process \mathbb{U} . The two “behaviors” that we described, in parallel and serial, are mimicked (by virtue of the definition of $\alpha_n(\eta)$) at successor and limit ordinals η , respectively.

LEMMA 41. For each $n \in \omega$, τ_n is a Markov kernel.

Proof. It is clear that for fixed (x, η) , the map $\tau_n((x, \eta), \cdot) : \mathcal{B}_V \otimes \mathcal{P}(\beta) \rightarrow [0, 1]$ is a subprobability measure. Let $A \in \mathcal{B}_V \otimes \mathcal{P}(\beta)$; we want to show that $\tau_n(\cdot, A)$ is measurable. For this, fix $q \in \mathbb{Q} \cap [0, 1]$ and consider the set $\{(x, \alpha) \in I \times \beta \mid \tau_n((x, \alpha), A) < q\}$. By inspection of the definition of τ_n in each fiber, we obtain that this set is the union of the following ones:

$$\begin{aligned} & \{(x, 0) \mid x \cdot m_0(A_0) < q\}, \quad \bigcup_{\eta < \beta} \{(0, q_n) \times \{\eta + 1\} \mid m_0(A_\eta) < q\}, \\ & \bigcup_{\eta < \beta} \{[q_n, 1) \times \{\eta + 1\} \mid m_1(A_\eta) < q\}, \quad \bigcup_{\lambda < \beta} \{(0, q_n) \times \{\lambda\} \mid m_0(A_{\alpha_n(\lambda)}) < q\}, \\ & \bigcup_{\lambda < \beta} \{[q_n, 1) \times \{\lambda\} \mid m_1(A_{\alpha_n(\lambda)}) < q\}. \end{aligned}$$

Observe that each section of this union is either open or closed. Then it is measurable in the product space by Lemma 40. □

Hence we have an LMP

$$\mathbb{S}(\beta) := (I \times \beta, \mathcal{B}_V \otimes \mathcal{P}(\beta), \{\tau_n\}_{n \in \omega})$$

for each $\beta \leq \omega_1$.

LEMMA 42. State bisimilarity \sim_s on $\mathbb{S}(\beta)$ is the identity.

Proof. We will show by induction that for all $1 \leq \eta \leq \beta$, $\sim_s \upharpoonright (I \times \eta)$ is the identity. For the case $\eta = 1$, we observe that if $(x, 0) \neq (x', 0)$, then for any $n \in \omega$

$$\tau_n((x, 0), I \times \beta) = x \neq x' = \tau_n((x', 0), I \times \beta)$$

holds. Assume now that the result holds for η and that $\eta + 1 \leq \beta$. By inductive hypothesis $\sim_s \upharpoonright (I \times \eta)$ is the identity. It is enough to consider states $(x, \alpha) \neq (x', \eta)$ for some $\alpha \leq \eta$. We analyze the case $\alpha < \eta$ first. The IH guarantees that every (r, γ) is only \sim_s -related to itself when $\gamma < \eta$; since $\alpha_n(\eta) < \eta$, it follows that the measurable set $A(n) := (I \times \{\alpha_n(\eta)\}) \cup (I \times \{\xi \mid \eta \leq \xi < \beta\})$ is an element of $\Sigma(\sim_s)$ for every $n \in \omega$. If $\eta = 1$, then $\alpha = 0$, and in such case $\tau_n((x, \eta), A(n)) = \tau_n((x, \eta), I \times \beta) = 1 > x' = \tau_n((x', 0), A(n))$ holds for any $n \in \omega$. For $\eta > 1$, there exists $n \in \omega$ such that $\alpha_n(\eta) \neq \alpha_n(\alpha)$ and we have

$$\tau_n((x, \eta), A(n)) = m_i(A(n)_{\alpha_n(\eta)}) = m_i(I) = 1 \neq 0 = \tau_n((x', \alpha), A(n)).$$

Suppose now that $\eta = \alpha$ and $x \neq x'$; without loss of generality we can choose $n \in \omega$ such that $x < q_n < x'$. Again, since $\alpha_n(\eta) = \alpha_n(\alpha) < \eta$, the inductive hypothesis guarantees that the set $A := (V \times \{\alpha_n(\eta)\}) \cup (I \times \{\xi \mid \eta \leq \xi < \beta\})$ is in $\Sigma(\sim_s)$. But then

$$\tau_n((x, \eta), A) = m_0(A_{\alpha_n(\eta)}) = m_0(V) \neq m_1(V) = m_1(A_{\alpha_n(\alpha)}) = \tau_n((x', \alpha), A).$$

This shows that the claim is also true for $\eta + 1$. Finally, assume λ is a limit ordinal. Since $\sim_s \upharpoonright (I \times \lambda) = \bigcup_{\eta < \lambda} \sim_s \upharpoonright (I \times \eta)$, the result follows easily from the IH. \square

We now calculate a bound for the event bisimilarity, $\sim_e = \mathcal{R}(\sigma(\llbracket \mathcal{L} \rrbracket))$. We define

$$\Lambda := \{A \subseteq I \times \beta \mid A_0 \in \mathcal{B}(I) \wedge \forall \alpha > 0 (A_\alpha \in \{\emptyset, I\})\}.$$

LEMMA 43. $\sigma(\llbracket \mathcal{L} \rrbracket) \subseteq \Lambda$.

Proof. It is clear that Λ is a σ -algebra, and now we verify that it is stable. Let $A \in \Lambda$ and $q \in \mathbb{Q} \cap I$. By the same reasoning as in the proof of Lemma 41, $\{(x, \alpha) \in I \times \beta \mid \tau_n((x, \alpha), A) < q\} \in \Lambda$ since it is Borel in the 0-fiber and, since $m_0(A_\eta) = m_1(A_\eta)$ for all $\eta > 0$, the remaining sections are either \emptyset or I . From this it follows that Λ is stable. Since $\sigma(\llbracket \mathcal{L} \rrbracket)$ is the least stable σ -algebra by Theorem 10, then $\sigma(\llbracket \mathcal{L} \rrbracket) \subseteq \Lambda$. \square

This bound is rather close to $\sigma(\llbracket \mathcal{L} \rrbracket)$, as the following result shows.

LEMMA 44. For all $\alpha < \beta$, $I \times \{\alpha\} \in \sigma(\llbracket \mathcal{L} \rrbracket)$.

Proof. For the case $\alpha = 0$ we observe that for any $n \in \omega$ $\{(x, \eta) \mid \tau_n((x, \eta), I \times \beta) < q\} = (0, q) \times \{0\}$, and this set is in $\sigma(\llbracket \mathcal{L} \rrbracket)$ because this σ -algebra is stable. If we choose $q = 1$ we obtain the first case.

Now assume that for a given $\eta < \beta$, $I \times \{\alpha\} \in \sigma(\llbracket \mathcal{L} \rrbracket)$ for all $\alpha < \eta$. For a fixed $n \in \omega$, since $\alpha_n(\eta) < \eta$, the following set is in $\sigma(\llbracket \mathcal{L} \rrbracket)$: $\{(x, \xi) \mid \tau_n((x, \xi), I \times \{\alpha_n(\eta)\}) < q\} = \bigcup_{\alpha < \beta} \{I \times \{\alpha\} \mid \alpha_n(\alpha) \neq \alpha_n(\eta)\} = I \times (\{\eta\} \cup \{\alpha < \beta \mid \alpha_n(\alpha) = \alpha_n(\eta)\})^c$. By taking complements in the right-hand side we obtain $A(n) := I \times (\{\eta\} \cup \{\alpha < \beta \mid \alpha_n(\alpha) = \alpha_n(\eta)\}) \in \sigma(\llbracket \mathcal{L} \rrbracket)$. But $I \times \{\eta\} = \bigcap_{n \in \omega} A(n) \in \sigma(\llbracket \mathcal{L} \rrbracket)$ since for $\alpha \neq \eta$ there exists $n \in \omega$ such that $\alpha_n(\alpha) \neq \alpha_n(\eta)$. This completes the inductive step. \square

The next lemma gives some information about the σ -algebra $\mathcal{G}^\zeta(\Lambda)$. Given $\eta < \beta$ and a σ -algebra \mathcal{A} , we will denote by $\mathcal{A}|_\eta$ the restriction $\mathcal{A} \upharpoonright I \times \{\eta\}$, i.e., the σ -algebra of η -sections of elements of \mathcal{A} .

LEMMA 45. If η satisfies $\beta > \eta \geq \zeta$, then $\mathcal{G}^\zeta(\Lambda)|_\eta \subseteq \mathcal{B}(I)$. Also, $\mathcal{G}^\zeta(\Lambda)|_{\zeta+1}$ is trivial whenever $\zeta < \zeta + 1 < \beta$.

Proof. By induction on ζ . If $\zeta = 0$, then $\mathcal{G}^0(\Lambda) = \Lambda$ and by its definition, $\Lambda|_\eta \subseteq \mathcal{B}(I)$. Now suppose that the result holds for $\zeta \geq 0$ and take $\eta \geq \zeta + 1$. Let $A \in \mathcal{G}^{\zeta+1}(\Lambda) = \mathcal{G}(\mathcal{G}^\zeta(\Lambda)) = \Sigma(\mathcal{R}^T(\mathcal{G}^\zeta(\Lambda)))$, i.e., $A \in \mathcal{B}_V \otimes \mathcal{P}(\beta)$ is $\mathcal{R}^T(\mathcal{G}^\zeta(\Lambda))$ -closed and therefore it is closed under this relation in each fiber. We aim to prove that A_η is Borel. We distinguish two cases: If η is $\zeta + 1$ for some ζ , then $\zeta \geq \zeta$ and by the IH $\mathcal{G}^\zeta(\Lambda)|_\zeta$ consists of Borel sets. Hence, for any set $D \in \mathcal{G}^\zeta(\Lambda)$, any $n \in \omega$, and any $x \in I$, $\tau_n((x, \eta), D) = m(D_{\eta-1})$. In consequence, if $A_\eta \neq \emptyset$, then it must be the case that $A_\eta = I$ because this set is $\mathcal{R}^T(\mathcal{G}^\zeta(\Lambda))$ -closed. Moreover, the second claim in the statement of the lemma follows.

If η is a limit ordinal, we cannot argue as before because to determine the relation $\mathcal{R}^T(\mathcal{G}^\zeta(\Lambda))$ we need to know the sections $D_{\alpha_n(\eta)}$ of the elements in $\mathcal{G}^\zeta(\Lambda)$, and it might

be the case that $\alpha_n(\eta) < \xi$. Nevertheless, $\{n \in \omega \mid \alpha_n(\eta) < \xi\}$ is finite and for the rest of the naturals m , τ_m does not distinguish points in A_η since by the IH $D_{\alpha_n(\eta)}$ is Borel. Now, if $\alpha_n(\eta) < \xi$, τ_n can only distinguish points between $[0, q_n)$ and $[q_n, 1]$; in consequence, $\mathcal{G}^{\xi+1}(\Lambda)|_\eta$ is the σ -algebra generated by such intervals, which is clearly included in the Borel σ -algebra. This finishes the case $\xi + 1$.

For case of ξ limit, the IH ensures that for all $\gamma < \xi$ and $\eta \geq \gamma$, $\mathcal{G}^\gamma(\Lambda)|_\eta \subseteq \mathcal{B}(I)$. Hence, if $\eta \geq \xi$, then $\eta > \gamma$ and this yields $\mathcal{G}^\xi(\Lambda)|_\eta = \sigma(\bigcup_{\gamma < \xi} \mathcal{G}^\gamma(\Lambda))|_\eta = \sigma(\bigcup_{\gamma < \xi} \mathcal{G}^\gamma(\Lambda)|_\eta) \subseteq \mathcal{B}(I)$. □

COROLLARY 46. *If $\beta > \eta + 1 \geq \xi$, then $\mathcal{O}^\xi(\sim_e) \upharpoonright I \times \{\eta + 1\}$ is the total relation. In consequence $\mathfrak{Z}(\mathbb{S}(\beta)) \geq \beta$ if β is limit, and $\mathfrak{Z}(\mathbb{S}(\zeta + 1)) \geq \zeta$ for all ζ .*

Proof. Combining the inclusion in Lemma 43 with the monotonicity of \mathcal{G} , we see that $\Sigma_\xi = \mathcal{G}^\xi(\sigma(\llbracket \mathcal{L} \rrbracket)) \subseteq \mathcal{G}^\xi(\Lambda)$ and by Lemma 45 $\Sigma_\xi|_\eta$ also consists of Borel sets if $\eta \geq \xi$. As a consequence, $\mathcal{O}^\xi(\sim_e) = R_\xi \supseteq \mathcal{R}^T(\Sigma_\xi)$ restricted to $I \times \{\eta + 1\}$ is the total relation because the measures m_i cannot distinguish points if the allowed sets are Borel. For the last assertion, take $\xi = \eta + 1$ for any $\xi < \beta$ in the limit case. For the second case, take $\xi = \eta = \zeta - 1$ if ζ is not limit. Otherwise, suppose by way of a contradiction that $\mathfrak{Z}(\mathbb{S}(\zeta + 1)) < \zeta$ and choose any η such that $\mathfrak{Z}(\mathbb{S}(\zeta + 1)) < \eta < \zeta$, then $\sim_s \upharpoonright I \times \{\eta + 1\} = \mathcal{O}^{\mathfrak{Z}(\mathbb{S}(\zeta + 1))}(\sim_e) \upharpoonright I \times \{\eta + 1\}$ is the total relation. This is a contradiction because \sim_s is the identity. □

The following lemma will provide a more detailed analysis of the relations R_α .

LEMMA 47. *For all $\alpha < \beta$, $R_\alpha \upharpoonright I \times (\alpha + 1)$ is the identity and $V \times \{\alpha\}$ is in $\Sigma(R_\alpha)$.*

Proof. For the case $\alpha = 0$, we note that $I \times \beta \in \sigma(\llbracket \mathcal{L} \rrbracket)$; hence, for any $q \in \mathbb{Q}$, $\{(x, \eta) \mid \tau_n((x, \eta), I \times \beta) < q\} \in \sigma(\llbracket \mathcal{L} \rrbracket)$. Given that $\tau_n((s, 0), I \times \beta) = s \cdot m_0(I) = s < 1$, if $s < t$, then for any $q \in \mathbb{Q}$ between s and t we have $(s, 0) \in \{(x, \eta) \mid \tau_n((x, \eta), I \times \beta) < q\} \setminus \mathcal{A}(t, 0)$. Then, $((s, 0), (t, 0)) \notin \sim_e = \mathcal{R}(\sigma(\llbracket \mathcal{L} \rrbracket))$. This shows that $R_0 = \sim_e$ is the identity on $I \times \{0\}$. Moreover, if $\eta > 0$ and $x \in I$, then for any n , $\tau_n((x, \eta), I \times \beta) = 1$ and hence $((s, 0), (x, \eta)) \notin \sim_e$. As a consequence, the set $V \times \{0\} \in \mathcal{B}_V \otimes \mathcal{P}(\beta)$ is \sim_e -closed. Note that, since $\sim_e \supseteq R_\alpha$ for any α , the previous sentence shows that the R_α -class of a point $(s, 0)$ is the singleton $\{(s, 0)\}$.

Assume now that $\alpha + 1 < \beta$ and the result holds for α . Thanks to the inclusion $R_{\alpha+1} \subseteq R_\alpha$, the IH ensures that $R_{\alpha+1} \upharpoonright I \times (\alpha + 1)$ is the identity relation and the set $V \times \{\alpha\}$ is in $\Sigma(R_\alpha)$. If $s < t$, we choose $n \in \omega$ such that $s < q_n < t$ and thus $\tau_n((s, \alpha + 1), V \times \{\alpha\}) = m_0(V) \neq m_1(V) = \tau_n((t, \alpha + 1), V \times \{\alpha\})$. Moreover, the same set $V \times \{\alpha\}$ serves as a test to distinguish points in the $(\alpha + 1)$ -section and the previous ones: $\tau_n((s, \alpha + 1), V \times \{\alpha\}) > 0 = \tau((t, \eta), V \times \{\alpha\})$ for any $\eta < \alpha + 1$. Therefore $R_{\alpha+1} = \mathcal{R}^T \Sigma(R_\alpha) \upharpoonright I \times (\alpha + 2)$ is also the identity. To show that $V \times \{\alpha + 1\} \in \Sigma(R_{\alpha+1})$ it is enough to prove that $((s, \alpha + 1), (t, \eta)) \notin R_{\alpha+1}$ if $\alpha + 1 < \eta$. For this we use the same $V \times \{\alpha\}$ provided by the IH. If η is a successor ordinal, for any n $\tau_n((t, \eta), V \times \{\alpha\}) = 0$ holds and if η is limit, we choose $n \in \omega$ such that $\alpha_n(\eta) \neq \alpha$ and again we obtain $\tau_n((t, \eta), V \times \{\alpha\}) = 0$.

It remains to check the limit case. Assume that $\lambda < \beta$ is a limit ordinal and the result holds for every $\alpha < \lambda$. Since $R_\lambda = \bigcap_{\alpha < \lambda} R_\alpha \subseteq R_\alpha$, $R_\lambda \upharpoonright I \times (\alpha + 1) \subseteq R_\alpha \upharpoonright I \times (\alpha + 1)$ must be the identity by the IH. From this we conclude that $R_\lambda \upharpoonright I \times \lambda$ is the identity relation. If $s < t$, let $q_n \in \mathbb{Q}$ such that $s < q_n < t$. By IH, $V \times \{\alpha_n(\lambda)\} \in \Sigma(R_{\alpha_n(\lambda)})$ and therefore the inequality $\tau_n((s, \lambda), V \times \{\alpha_n(\lambda)\}) \neq \tau_n((t, \lambda), V \times \{\alpha_n(\lambda)\})$ allows

us to conclude that $((s, \lambda), (t, \lambda)) \notin R_{\alpha_n(\lambda)+1} \supseteq R_\lambda$. Now, if $\eta \neq \lambda$, we choose n such that $\alpha_n(\eta) \neq \alpha_n(\lambda)$ and we have $\tau_n((s, \lambda), V \times \{\alpha_n(\lambda)\}) > 0 = \tau_n((t, \eta), V \times \{\alpha_n(\lambda)\})$. As before $((s, \lambda), (t, \eta)) \notin R_{\alpha_n(\lambda)+1} \supseteq R_\lambda$. It follows that $R_\lambda \upharpoonright I \times (\lambda + 1)$ is the identity and $V \times \{\lambda\}$ is in $\Sigma(R_\lambda)$. \square

COROLLARY 48. $\mathfrak{Z}(\mathbb{S}(\zeta + 1)) \leq \zeta$. If β is a limit ordinal, then $\mathfrak{Z}(\mathbb{S}(\beta)) \leq \beta$.

Proof. The first statement follows directly from Lemma 47 by taking $\alpha = \zeta$. For the second one, if β is a limit ordinal $\forall \alpha < \beta R_\alpha \supseteq R_\beta$, then if $R_\alpha \upharpoonright I \times (\alpha + 1)$ equals the identity, $R_\beta \upharpoonright I \times (\alpha + 1)$ is also the identity. Therefore $R_\beta \upharpoonright I \times \beta$ is the identity and $\mathfrak{Z}(\mathbb{S}(\beta)) \leq \beta$. \square

THEOREM 49. For a limit $\beta \leq \omega_1$, $\mathfrak{Z}(\mathbb{S}(\beta)) = \beta$, and if $\beta < \omega_1$, $\mathfrak{Z}(\mathbb{S}(\beta + 1)) = \beta$.

From this we have another proof of Corollary 39, since it is elementary to check that for countable β , $\mathbb{S}(\beta)$ is separable.

We close this section by studying the possible dependency of the value of $\mathfrak{Z}(\mathbb{S})$ under different set-theoretical hypotheses (consistent relative to Zermelo–Fraenkel set theory).

Assuming the Continuum Hypothesis (*CH*) we have $2^{\aleph_0} = \aleph_1 < 2^{\aleph_1}$ and in consequence the space $(I \times \omega_1, \mathcal{B}_V \otimes \mathcal{P}(\omega_1))$ is not separable. Indeed, there are $2^{\aleph_1} = |\mathcal{P}(\omega_1)|$ subsets of ω_1 and each of them defines a different measurable set in the product σ -algebra, but the cardinal of a countably generated σ -algebra is at most 2^{\aleph_0} .

On the other hand, if we assume *Martin’s Axiom (MA)* and the negation of *CH*, any uncountable subset $X \subseteq \mathbb{R}$ with cardinality less than 2^{\aleph_0} is a *Q-set* (see, e.g., [8]), viz. one such that all of its subsets are relative G_δ . If we choose X such that $|X| = \aleph_1$, the relative topology has a countable base (the relativization of such a base for \mathbb{R}) and it generates $\mathcal{P}(X)$ as a σ -algebra since X is a *Q-set*. Then, $\mathcal{P}(X) \cong \mathcal{P}(\omega_1)$ is separable and in consequence $(I \times \omega_1, \mathcal{B}_V \otimes \mathcal{P}(\omega_1))$, the state space of $\mathbb{S}(\omega_1)$, also is. In this context the bound in Corollary 39 is attained.

§6. Conclusion. The Zhou ordinal provides a measure of the failure of the Hennessy–Milner property on labelled Markov processes over general measurable spaces. The general study of this ordinal on processes over separable metrizable spaces has opened several questions.

The proof of Theorem 37 shows in particular that given a process \mathbb{S} with $\mathfrak{Z}(\mathbb{S}) \geq \alpha$, we can construct a second one \mathbb{S}' with $\mathfrak{Z}(\mathbb{S}') = \alpha + 1$, whenever α is a *successor* ordinal. But we actually do not know how to obtain this result for general α . This is even clearer for $\alpha = 0$: The construction of the initial counterexample from [10] does not follow the pattern of what we do in the passage from $\alpha + 1$ to $\alpha + 2$. The same happens with the proof of the Theorem 38. Given $\{\mathbb{S}_\alpha\}_{\alpha < \beta}$ with β limit, the second general question is to construct in a natural way some \mathbb{S}_β such that $\mathfrak{Z}(\mathbb{S}_\beta) = \sup_{\alpha < \beta} \mathfrak{Z}(\mathbb{S}_\alpha)$. For the case of countable β , we obtain a process \mathbb{T} with $\mathfrak{Z}(\mathbb{T}) \geq \sup_{\alpha < \beta} \mathfrak{Z}(\mathbb{S}_\alpha)$ (actually, strictly greater).

It is to be noted that the last inequality can be upgraded to an equality by passing to an appropriate quotient. We know how to perform this construction to get a process with Zhou ordinal a limit β from one with a larger ordinal, but this needs further study in general. Another avenue to pursue is the characterization of event bisimilarity on the processes $\mathbb{S}(\alpha)$. It can be proved that our proposed bound Λ is indeed equal to

$\sigma(\llbracket \mathcal{L} \rrbracket)$ for countable α ; also $\sigma(\llbracket \mathcal{L} \rrbracket)$ is always countably generated. But consistently, Λ on $\mathbb{S}(\omega_1)$ is not.

As the main open question, we did not settle if $\mathfrak{Z}(\mathcal{S})$ is actually a (regular) cardinal. An early conjecture was that $\mathfrak{Z}(\mathcal{S}) = \omega_1$ (unconditionally), but this is now counterintuitive in view of the existence of a separable LMP with such ordinal under $MA + \neg CH$. It is also to be noted that if we were able to pass from any process with ordinal α to one with ordinal $\alpha + 1$, the same set-theoretical assumptions would let us conclude $\mathfrak{Z}(\mathcal{S}) \geq \omega_1 \cdot 2$ by Theorem 38. To put it in focus, (consistently) finding a separable \mathbb{S} with $\mathfrak{Z}(\mathbb{S}) \geq \omega_1 + 1$ is the next question to address.

Acknowledgements. We are very grateful for the referee's useful suggestions and detailed reading. The second author wants to thank Chunlai Zhou for early discussions on this material during Dagstuhl Seminar 12411 on Coalgebraic Logics.

Funding. Authors supported by Secyt-UNC project 33620180100465CB.

BIBLIOGRAPHY

- [1] Billingsley, P. (1995). *Probability and Measure*. New York: Wiley-Interscience.
- [2] Danos, V., Desharnais, J., Laviolette, F., & Panangaden, P. (2006). Bisimulation and cocongruence for probabilistic systems. *Information and Computation*, **204**, 503–523.
- [3] Desharnais, J. (1999). Labelled Markov Processes. Ph.D. Thesis, McGill University.
- [4] Desharnais, J., Edalat, A., & Panangaden, P. (2002). Bisimulation for labelled Markov processes. *Information and Computation*, **179**(2), 163–193.
- [5] Doberkat, E.-E. (2005). Semi-pullbacks for stochastic relations over analytic spaces. *Mathematical Structures in Computer Science*, **15**(4), 647–670.
- [6] Edalat, A. (1999). Semi-pullbacks and bisimulation in categories of Markov processes. *Mathematical Structures in Computer Science*, **9**(5), 523–543.
- [7] Kechris, A. S. (1994). *Classical Descriptive Set Theory*, Graduate Texts in Mathematics, Vol. 156. New York: Springer.
- [8] Miller, A. W. (2007). A hodgepodge of sets of reals. *Note di Matematica*, **27**(Supplemento 1), 25–39.
- [9] Pahl, J. & Sánchez Terraf, P. (2021). Semipullbacks of labelled Markov processes. *Log. Methods Comput. Sci.*, **17**(2), 3:1–3:12.
- [10] Sánchez Terraf, P. (2011). Unprovability of the logical characterization of bisimulation. *Information and Computation*, **209**(7), 1048–1056.
- [11] Sangiorgi, D. (2011). *Introduction to Bisimulation and Coinduction*. Cambridge: Cambridge University Press.
- [12] Zhou, C. (2013). Approximating bisimilarity for Markov processes. *Electronic Notes in Theoretical Computer Science*, **298**, 427–440.

FACULTAD DE MATEMÁTICA, ASTRONOMÍA, FÍSICA Y COMPUTACIÓN
 UNIVERSIDAD NACIONAL DE CÓRDOBA
 CÓRDOBA, ARGENTINA

and

CENTRO DE INVESTIGACIÓN Y ESTUDIOS DE MATEMÁTICA (CIEM-FAMAF)
CONICET, CÓRDOBA, ARGENTINA

E-mail: moroni@famaf.unc.edu.ar

E-mail: sterraf@famaf.unc.edu.ar

URL: <https://cs.famaf.unc.edu.ar/~pedro/>