



THE BRITISH JOURNAL OF PSYCHIATRY

August 1991

Vol. 159

Review Article

Infant psychiatry: its relevance for the general psychiatrist. *K. Minde and D. Benoit*

173

Papers

The construction and selection of predictive scales, with special reference to parasuicide. *N. Kreitman and J. Foster*

185

The diagnosis of dementia in the elderly. A comparison of CAMCOG (the cognitive section of CAMDEX), the AGE CAT program, DSM-III, the Mini-Mental State Examination and some short rating scales. *G. Blessed, S. E. Black, T. Butler and D. W. K. Kay*

193

Psychological symptoms and their course in first-year medical students as assessed by the Interval General Health Questionnaire (I-GHQ). *P. McC. Miller and P. G. Surtees*

199

Self-detoxification by opiate addicts. A preliminary investigation. *M. Glossop, M. Battersby and J. Strang*

208

Heavy drinking as a risk factor for depression and dementia in elderly men. Findings from the Liverpool longitudinal community study. *P. A. Saunders, J. R. M. Copeland, M. E. Dewey, I. A. Davidson, C. McWilliam, V. Sharma and C. Sullivan*

213

Effects of substance abuse on ventricular and sulcal measures assessed by computerised tomography. *N. G. Cascella, G. Pearlson, D. F. Wong, E. Broussolle, C. Nagoshi, R. A. Margolin and E. D. London*

217

Psychosis in migrants from the Indian sub-continent and English-born controls. A preliminary study on the use of psychiatric services. *S. Gupta*

222

Changes in the positive and negative symptoms of schizophrenic in-patients in China. *M. R. Phillips, Z. Zhao, X. Xiong, X. Cheng, G. Sun and N. Wu*

226

Suicidal ideation as a presenting complaint. Associated diagnoses and characteristics in a casualty population. *C. J. Hawley, D. V. James, P. L. Birkett, D. S. Baldwin, M. J. de Ruiter and R. G. Priest*

232

Social adjustment of remitted bipolar and unipolar out-patients. A comparison with age- and sex-matched controls. *F. Bauwens, A. Tracy, D. Pardoën, M. Vander Elst and J. Mendlewicz*

239

The COSTAR programme. 1: Improving social networks of the long-term mentally ill. *G. Thornicroft and W. R. Breakey*

245

A comparison of nutritional management with stress management in the treatment of bulimia nervosa. *R. G. Laessle, P. J. V. Beumont, P. Butow, W. Lennerts, M. O'Connor, K. M. Pirke, S. W. Touyz and S. Waadt*

250

Neuroendocrine challenge studies in puerperal psychoses. Dexamethasone suppression and TRH stimulation. *E. S. Paykel, A. M. del Campo, W. White and R. Horton*

262

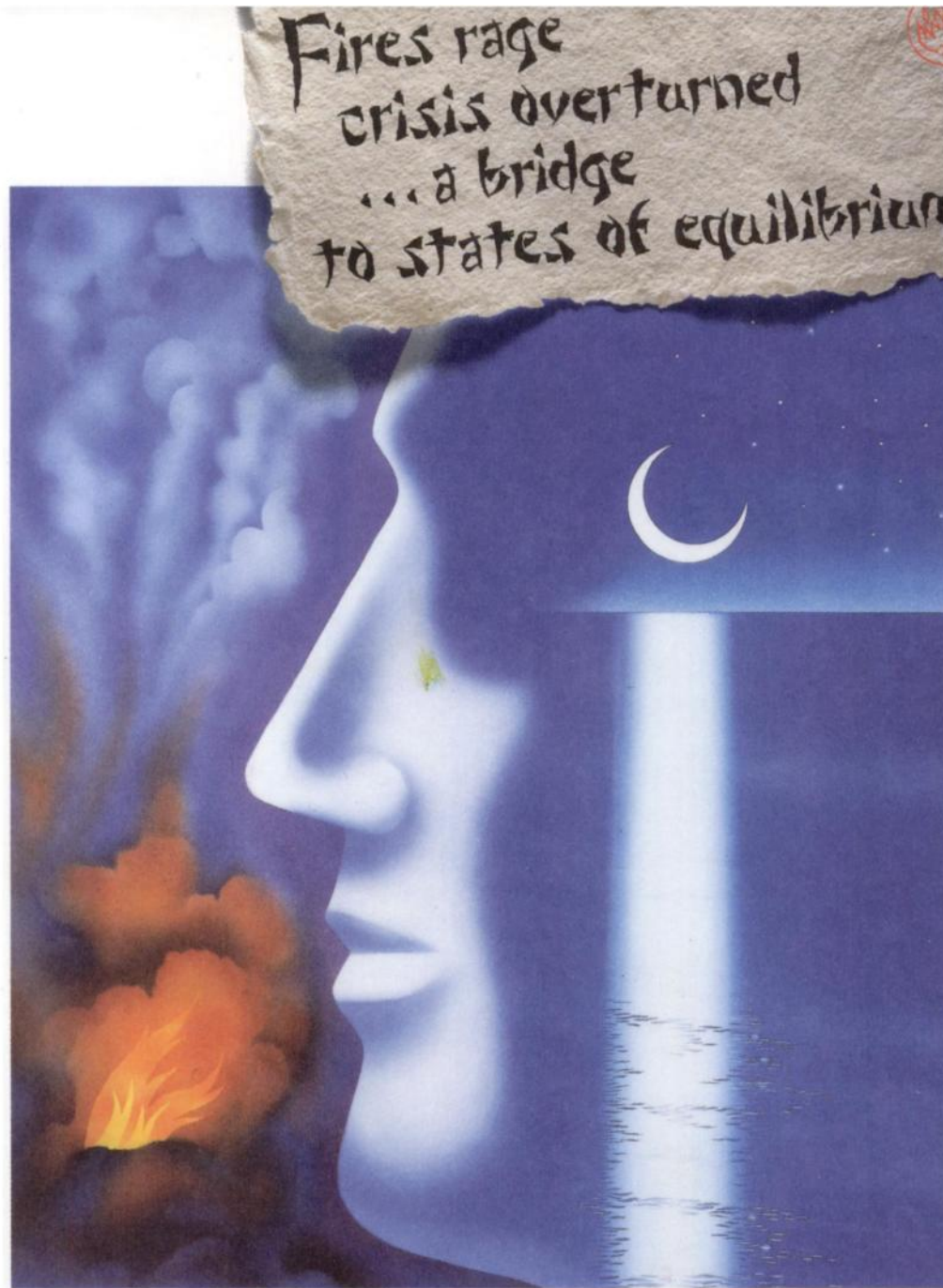
Continued inside

PSYCHIATRIC CLINIC
NEW YORK HOSPITAL

Psychiatry 1841-1991

Not to be taken
from Library
Published by the Royal College of Psychiatrists
AUG 12 1991

ISSN 0007-1250



75 YEARS

OF CARE
Lundbeck
FACING
THE
FUTURE
TOGETHER

C L O P I X O L
ACUPHASE[®]
zuclopenthixol acetate

D E P O T
CLOPIXOL[®]
zuclopenthixol decanoate

A harmonious way to treat acute and chronic psychosis

Further information is available on request from: Lundbeck Ltd, Lundbeck House, Hastings Street, Luton, Beds LU1 5BL

The British Journal of Psychiatry

August 1991, Volume 159

Published monthly. Founded in 1853 as the *Asylum Journal* and known as the *Journal of Mental Science* from 1858 to 1963

Editor: Hugh Freeman

Senior Associate Editor

Alan Kerr

Associate Editors

Dora Black, Sidney Crown,
Julian Leff, Sir Martin Roth,
Peter Tyrer

Assistant Editors

Mohammed Abou-Saleh, German Berrios,
Peter Bruggen, Patricia Casey, Alexander
Kellam, Stuart Montgomery, Catherine
Oppenheimer, Ian Pullen, Rosalind
Ramsay, Henry Rollin, Oliver Russell,
George Stein, Digby Tantam,
Greg Wilkinson, Stephen Wilson

Publications Manager

Dave Jago

Scientific Editor

Ralph Footring

Bulletin Manager

Elaine Millen

Assistant Scientific Editor

Katharine Blanford

Editorial Assistants

Judy Ashworth, Christina Connolly

US Mailing Agents: Mercury Airfreight International Ltd. Inc.,
2323 Randolph Avenue, Avenel, NJ 07001. Second class postage
paid at Rahway, NJ.

Back issues published before 1988 may be purchased from William
Dawson & Sons Ltd, Cannon House, Folkestone, Kent, England
(tel. 0303-850-101).

©™ The paper used in this publication meets the minimum
requirements of American National Standard for Information
Sciences—Permanence of Paper for Printed Library Materials.
ANSI Z39.48-1984.

Printed by Henry Ling Ltd, The Dorset Press,
23 High East Street, Dorchester, Dorset DT1 1HD

©1991 The Royal College of Psychiatrists

Contents continued from front cover

Point of View

Schizophrenia and affective disorder: are they
genetically linked? *M. Baron and R. S. Gruen* 267

The Current Literature

Enhancement of recovery from psychiatric
illness by methylfolate. *A. Procter* 271

Brief Reports

Obsessive slowness revisited. *R. H.
Ratnasuriya, I. M. Marks, D. M. Forshaw and
N. F. S. Hymas* 273

The Fregoli syndrome and puerperal psy-
chosis. *D. O'Sullivan and C. Dean* 274

Neuroleptic malignant syndrome in a case of
acute post-traumatic psychosis. *D. Watts* 277

Rapid-cycling manic-depressive illness fol-
lowing subarachnoid haemorrhage. *M. J.
Blackwell* 279

Secondary mania after open-heart surgery.
L. J. Isles and W. M. Orrell 280

An unusual monosymptomatic hypochon-
driacal delusion presenting as self-insertion
of a foreign body into the urethra. *G. Walter* 283

Delusion of pregnancy in schizophrenia. *R.
Shankar* 285

Spousal allegations of incest during transient
psychotic episodes. *G. J. Remington and H.
Rosenblat* 287

Columns

Correspondence 289

A hundred years ago. *Researched by H. Rollin* 299

Books reconsidered. *General Psychopathology*
(Jaspers). A trainee's view. *P. J. Harrison* 300

Book reviews 303

American Journal of Psychiatry (contents) 318

The Journal of Nervous and Mental Disease
(contents) facing 318

The *British Journal of Psychiatry* is published
monthly under the auspices of the Royal College of
Psychiatrists. The *Journal* publishes original work in
all fields of psychiatry. All communications, includ-
ing manuscripts for publication, should be sent
to The Editor, *British Journal of Psychiatry*, 17
Belgrave Square, London SW1X 8PG.

Full instructions to authors are given on the follow-
ing two pages in this issue.

BOOKS FROM WILEY

5-HT(1A) Agonists, 5-HT(3) Antagonists and Benzodiazepines

Their Comparative Behavioral Pharmacology

Edited by R.J. RODGERS, University of Leeds and
S.J. COOPER, University of Birmingham, UK

With the aim of highlighting behavioral similarities and differences, the editors of this book have prepared an authoritative account of the major developments in our understanding of the behavioral pharmacology of benzodiazepine and serotonin receptor ligands.

0471927937 400pp June 1991 \$55.00/\$117.05

Post-Viral Fatigue Syndrome

Edited by R. JENKINS, Institute of Psychiatry, London
and J. MOWBRAY, St Mary's Hospital Medical School,
London, UK

This book aims to provide, in one source, an up-to-date comprehensive account of current knowledge into what is broadly termed Post-Viral Fatigue Syndrome. It contains an historical account of the early literature on Myalgic Encephalomyelitis as well as viral, biochemical, immunological and psychological reviews.

0471928461 488pp May 1991 \$65.00/\$138.00

Alzheimer's Disease Basic Mechanisms, Diagnosis and Therapeutic Strategies

Edited by K. IQBAL, NYS Institute for Basic Research,
New York, USA, D.R.C. McLACHLAN, University of
Toronto, Canada, B. WINBLAD, Karolinska Institute,
Stockholm, Sweden and H.M. WISNIEWSKI, NYS
Institute for Basic Research, New York, USA

Presented here is a wide-ranging, authoritative and comprehensive coverage of the most recent and significant advances in basic research and clinical investigations of Alzheimer's disease. Contributions are drawn from the major research groups around the world, providing an invaluable information and reference source to both basic researchers and clinicians providing primary care for the unfortunate victims of Alzheimer's disease.

0471929271 676pp March 1991 \$95.00/\$218.50

Wiley books are available through your bookseller. Alternatively order direct from Wiley (payment to John Wiley & Sons Ltd). Credit card orders accepted by telephone - (0243) 829121 or FREEFONE 3477. Please note that prices quoted here apply to UK and Europe only.

JOHN WILEY & SONS LTD
BAFFINS LANE · CHICHESTER
WEST SUSSEX PO19 1UD



INNOVATIONS IN THE PSYCHIATRY OF PRIMARY CARE

National Conference
Sheffield

10th-11th September 1991

Speakers will include: Professor David Goldberg, Dr Alastair Wright and Dr Greg Wilkinson.

Topics include: Somatisation; Managing M.E.; New approaches for managing major mental illness in primary care; Children who frequently attend.

Details from: Tracy Evans,
Research and Development for
Psychiatry, Northern Office,
Suite 303, Premier House, 14
Cross Burgess St., Sheffield S1
2HG. Tel: 0742 753131.

Cost: £75.00 PGEA applied for.



GASKELL



Royal College
of Psychiatrists

Health Services Planning and Research

Contributions from Psychiatric Case Registers

Edited by J. K. Wing
£7.50, 136 pp.
ISBN 0 902241 30 3