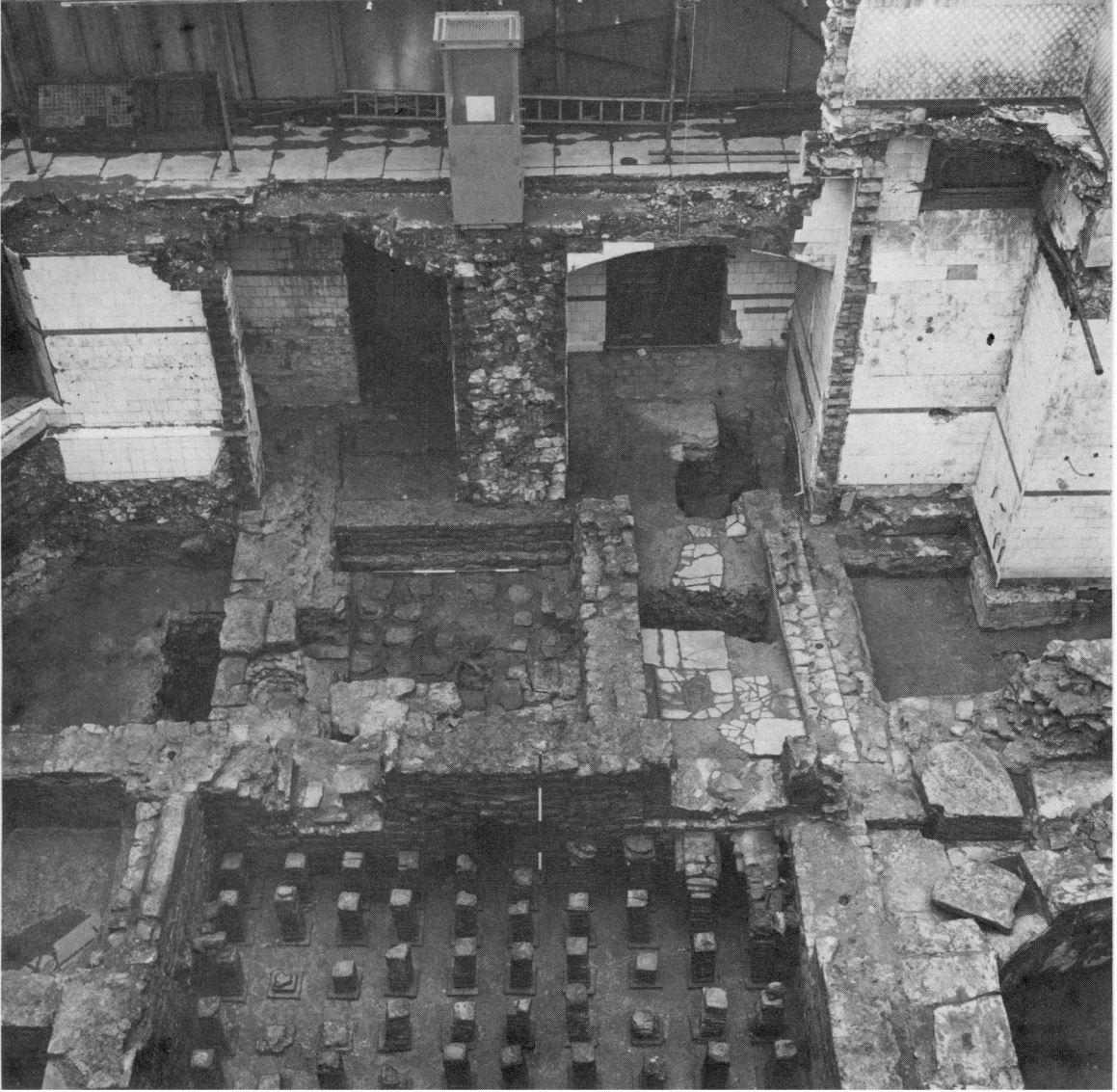


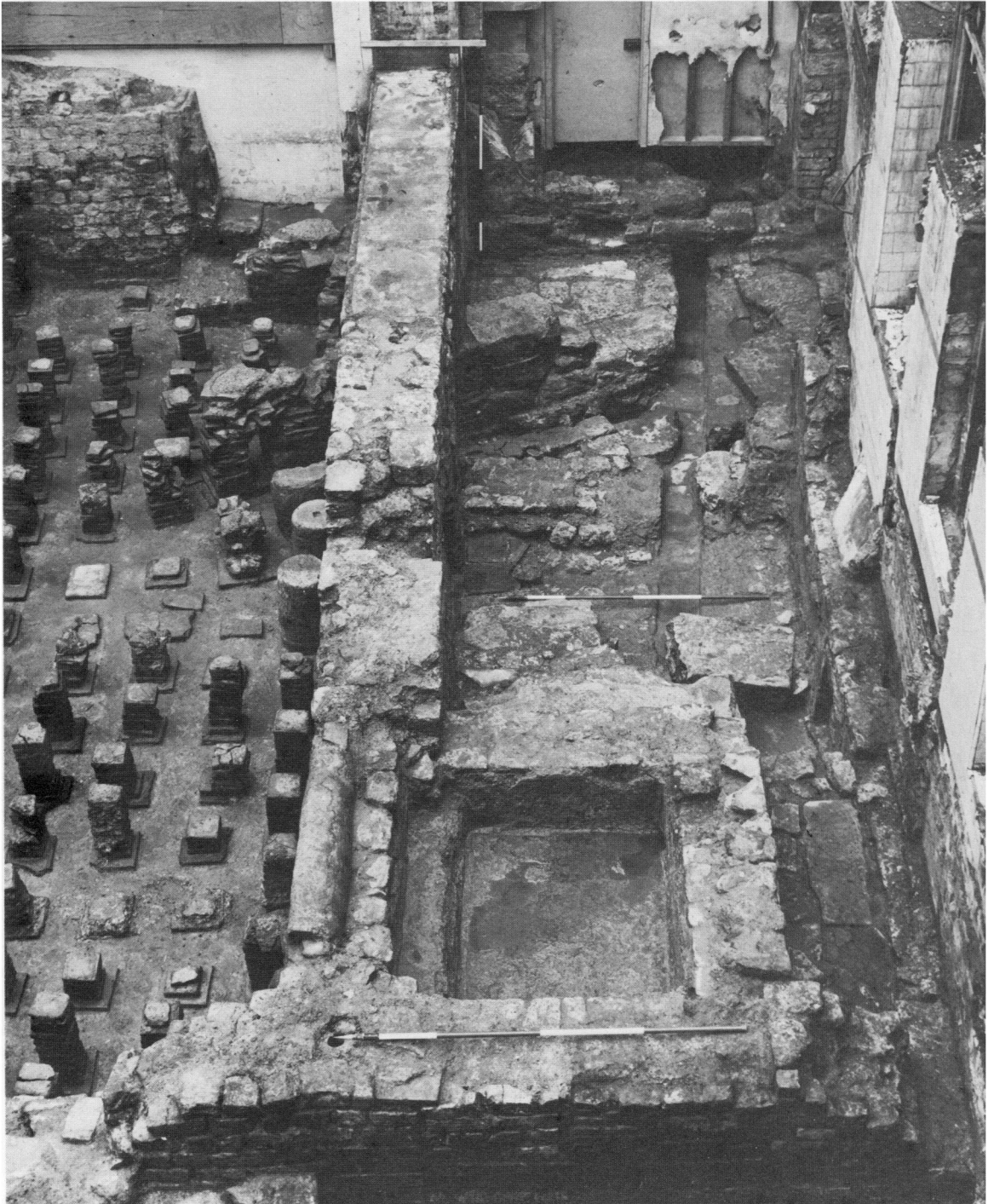
PLATE I



(Photo: M. Rouillard and W. Startin)

Roman Bath: General view of the west baths, looking west (p. iff). Scales in half metres.

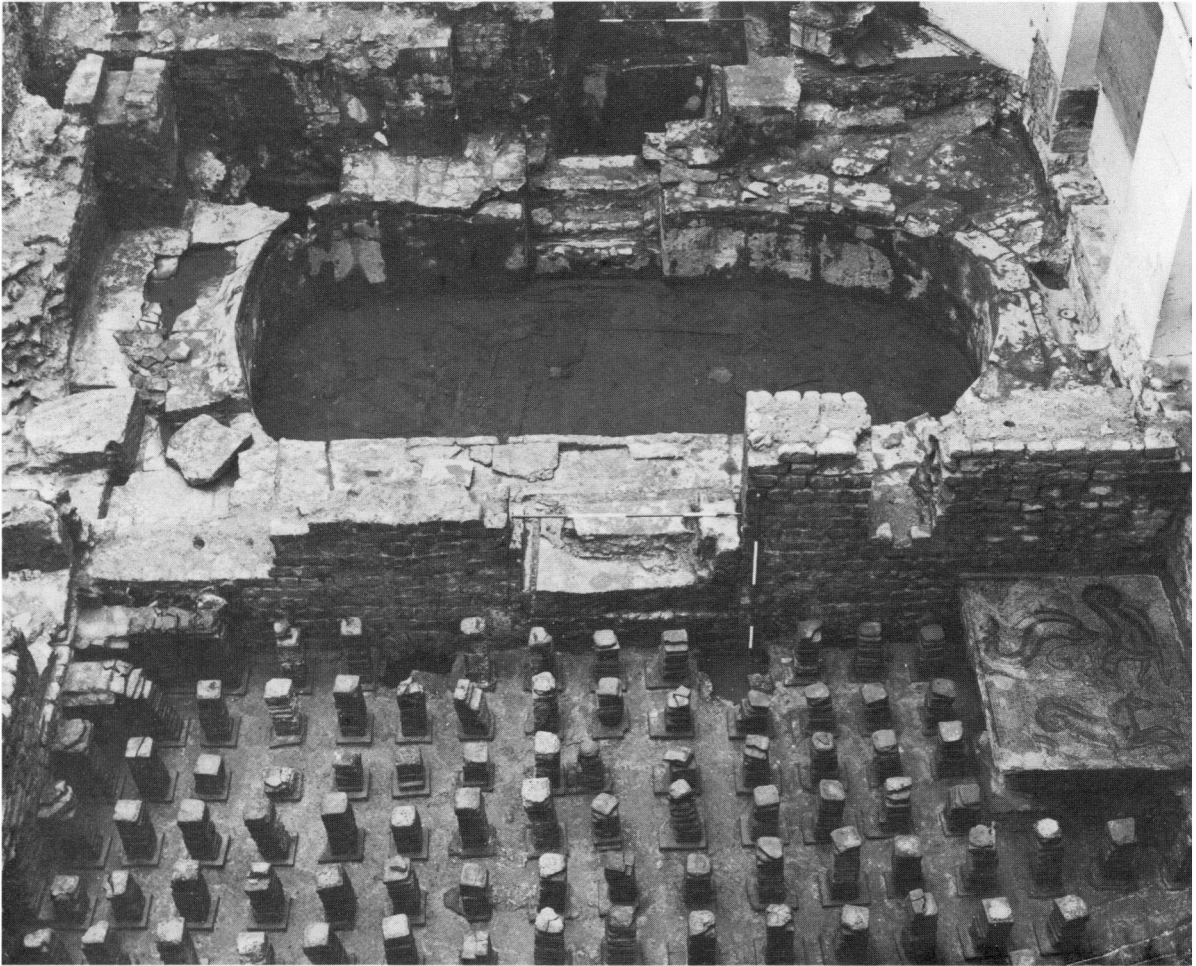
PLATE II



(Photo: M. Rouillard and W. Startin)

Roman Bath: the corridor between the *tepidarium* and the *laconicum*, looking east (pp. 8ff)
Scales in half metres.

PLATE III



(Photo: M. Rouillard and W. Startin)
Roman Bath: the *tepidarium* and the *caldarium* with a cold bath inserted in Period V (p. 17).
The mosaic was not found in the Roman baths.

PLATE IV



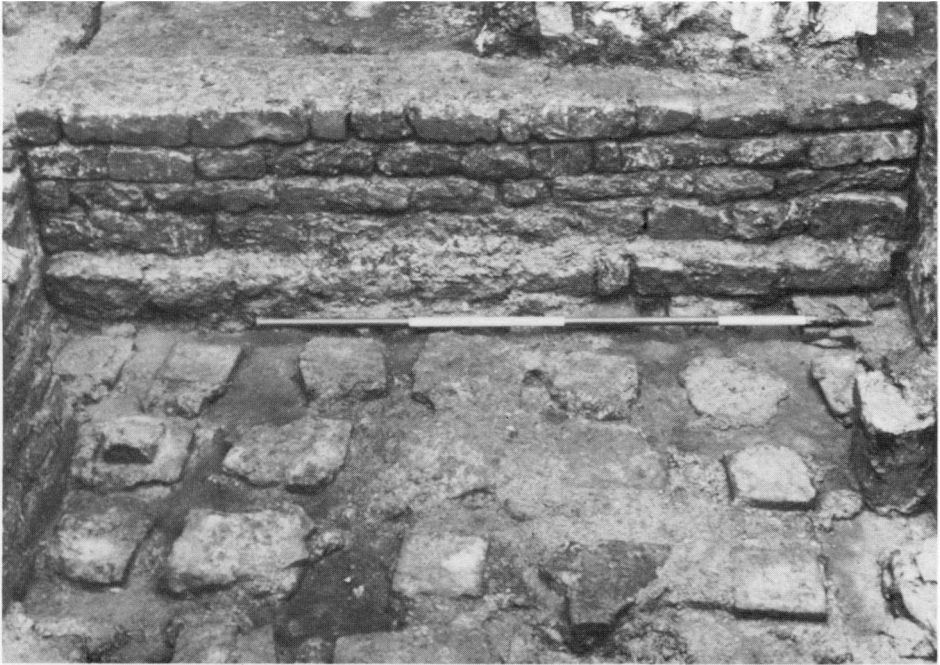
(Photo: M. Rouillard and W. Startin)

A. Roman Bath: Room IV 7 west of the original *caldarium*, looking north-east. Room IV 4 and Trench 36a in foreground: plunge-bath in earlier *caldarium* at top (p. 14)



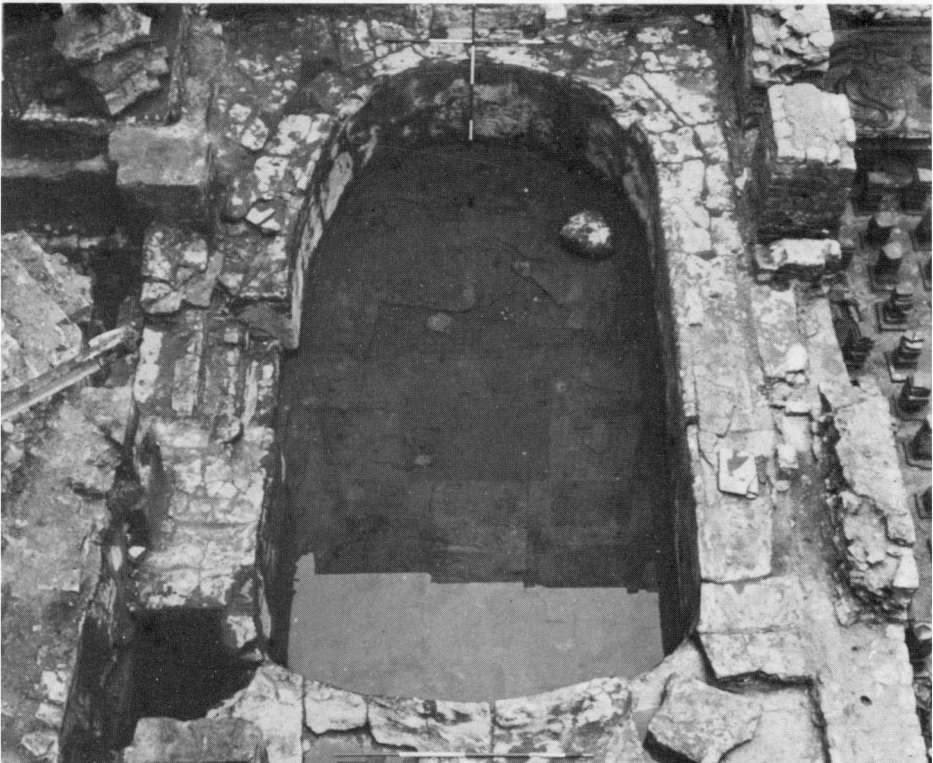
(Photo: M. Rouillard and W. Startin)

B. Roman Bath: flue inserted into Room V 3 in Period V to heat the *tepidarium* (in background) (p. 16). The hypocaust in the foreground is of Period V date. Scale in half metres.



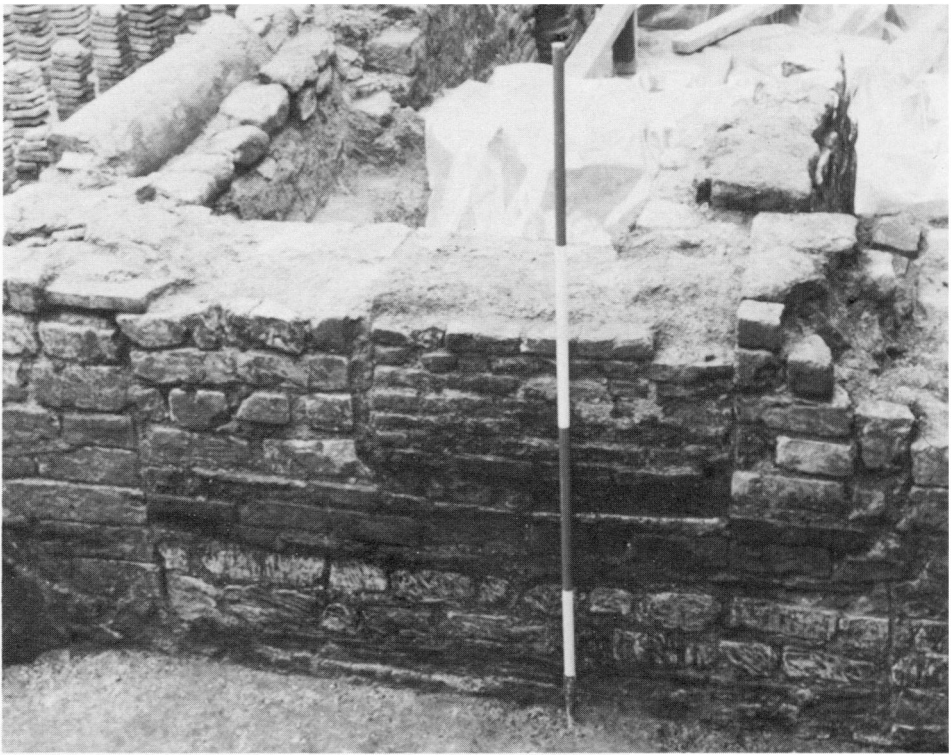
(Photo: M. Rouillard and W. Startin)

A. Roman Bath: Room V 3 showing the period V wall laid across the Period IV hypocaust basement (p. 16), looking west. Scale in half metres.



(Photo: M. Rouillard and W. Startin)

B. Roman Bath: the cold bath inserted into the caldarium in Period V (p. 16).



(Photo: M. Rouillard and W. Startin)

A. Roman Bath: wall between the south-west corner of the *tepidarium* and the north-west corner of the *laconicum* showing the different phases of blocking (pp. 7, 16). Scale in half metres.



B. Roman Bath: bath originally constructed in Period I opening out of the north side of the *caldarium* (p. 5). West at top. Scale in half metres.

(Photo: M. Rouillard and W. Startin)



(Photo: M. Rouillard and W. Startin)

A. Roman Bath: Room IV 6 showing paving and door, later blocked, leading to the area east of the *laconicum* (p. 15), looking south. Scale in half metres.



(Photo: M. Rouillard and W. Startin)

B. Roman Bath: south wall of *tepidarium* showing the flue-arch communicating with the heated basement of Room IV (p. 14). The contemporary door above was blocked in Period VI. Scale in half metres.



(Photo: M. Rouillard and W. Startin)

A. Roman Bath: Room IV 6 showing paving and door, later blocked, leading to the area east of the *laconicum* (p. 15), looking south. Scale in half metres.



(Photo: M. Rouillard and W. Startin)

B. Roman Bath: north wall of Room III 2 abutting west wall of the *tepidarium* (p. 9), Scale in half metres.

PLATE IX



(Photo: D. A. Jackson)

A. Aldwinckle Bridge. Sire view of the abutment as seen in the quarry face (pp. 39, 50).



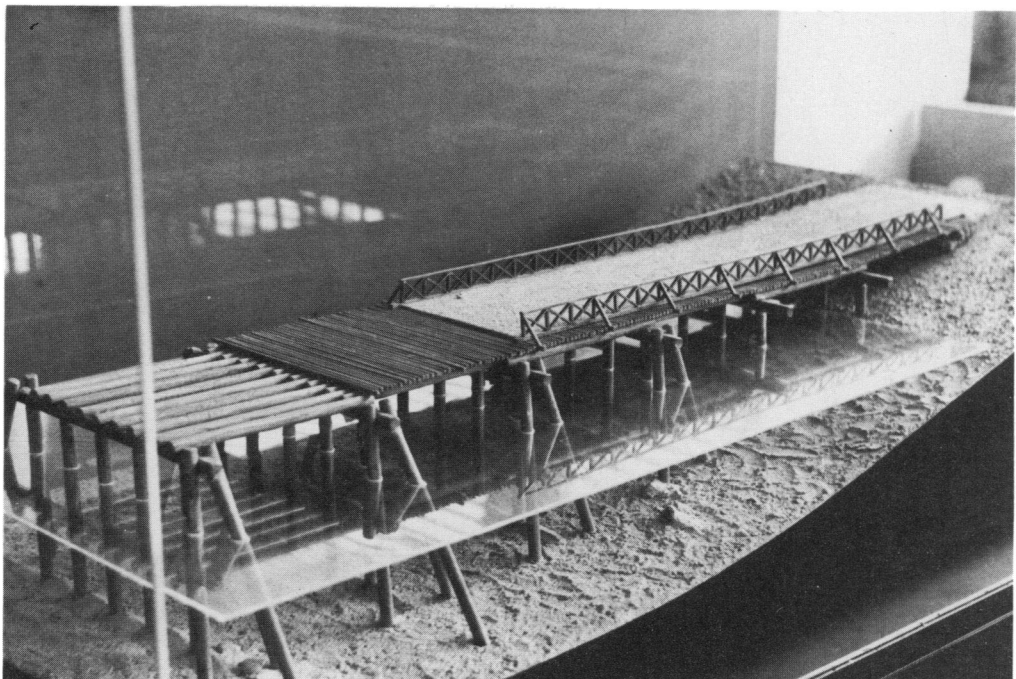
(Photo: D. A. Jackson)

B. Aldwinckle Bridge. Trench 2, the east corner of the abutment (p. 44).



(Photo: D. A. Jackson)

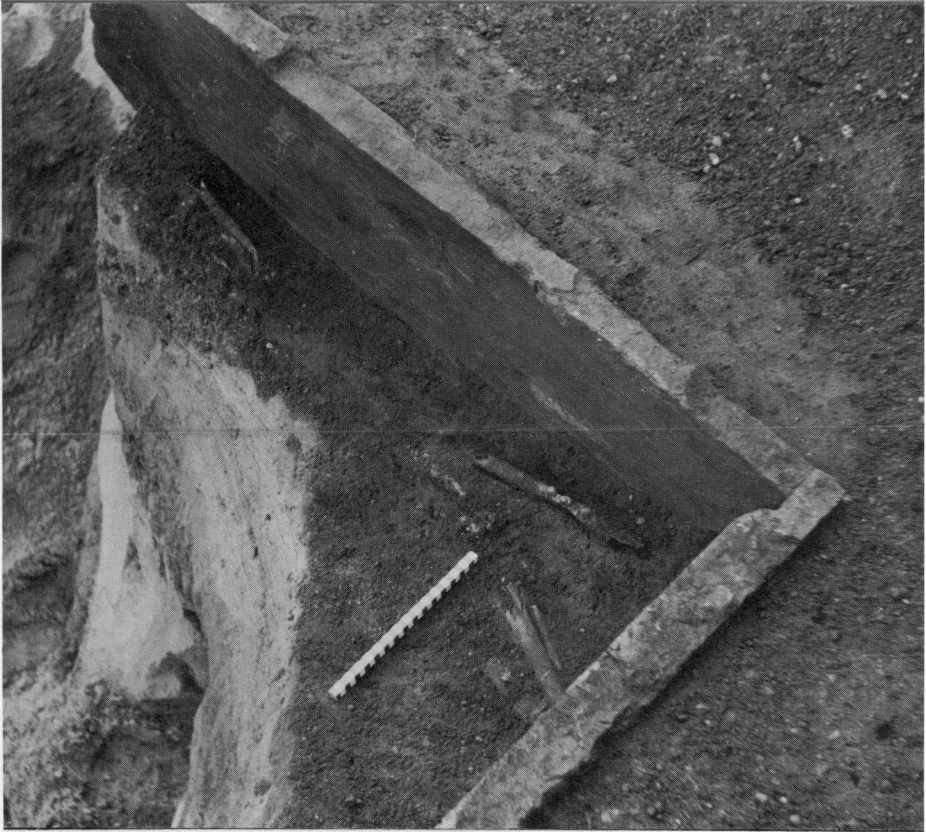
A. Aldwinckle Bridge. Half-jointing at the east corner of the abutment (pp. 42, 44, 51).



(Photo: P. Woods)

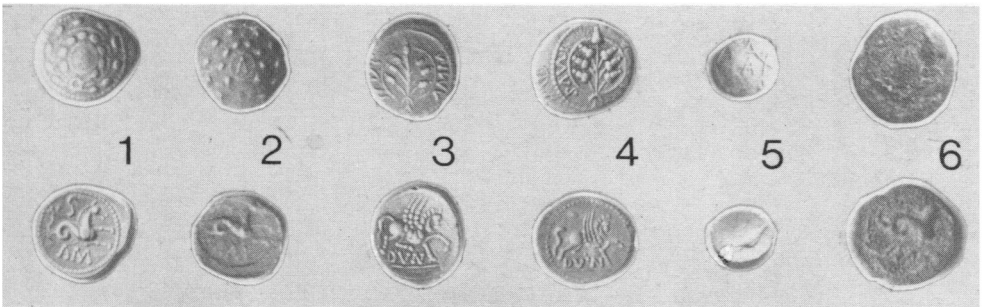
**B. Roman bridge-construction as restored in the Rheinisches Landesmuseum, Bonn (p. 48).
(Published by permission of the Director.)**

PLATE XI



(Photo: J. Close-Brooks)

A. Camelon: The cist burial, 1975 (pp. 73 ff.).



B. British coins in silver (Nos. 1-5) and bronze (No. 6), all save No. 5 of Adminius (pp. 96 ff.). Scale 1:1.

PLATE XII



(Photo: E.J. Phillips)

Tombstone from Murrell Hill, Carlisle (p. 101). 90 by 129 cm.

PLATE XIII



(Photo: E. J. Phillips)

B. Tombstone of Vacia from Carlisle (p. 103). 68 by 137 cm.



(Photo: E. J. Phillips)

A. Tombstone from Carlisle (p. 102). 42 by 42 cm.

PLATE XIV



(Photo: E. J. Phillips)
B. Tombstone from Old Carlisle (p. 104). 60 by 68 cm.



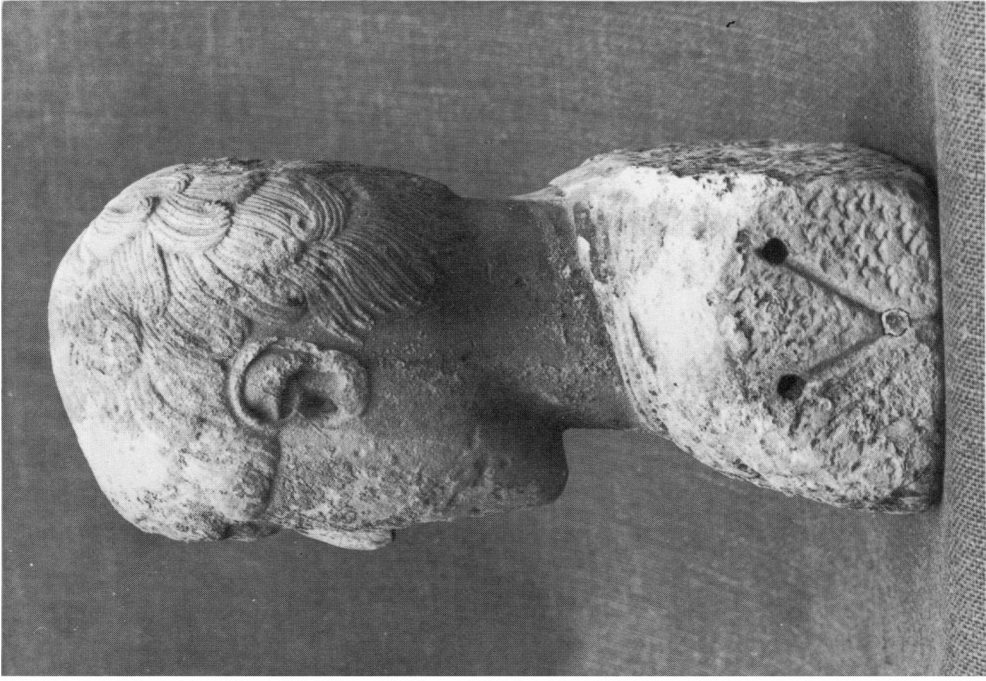
(Photo: E. J. Phillips)
A. Tombstone from Bowness on Solway (p. 103) 50 by 65 cm



(Photo: E.J. Phillips)

Tombstone of Aurelia Aureliana from Gallows Hill, Carlisle, p. 105). 84 by 163 cm.

PLATE XVI



(Photo :C. N. Moore)

B. The same, side view.



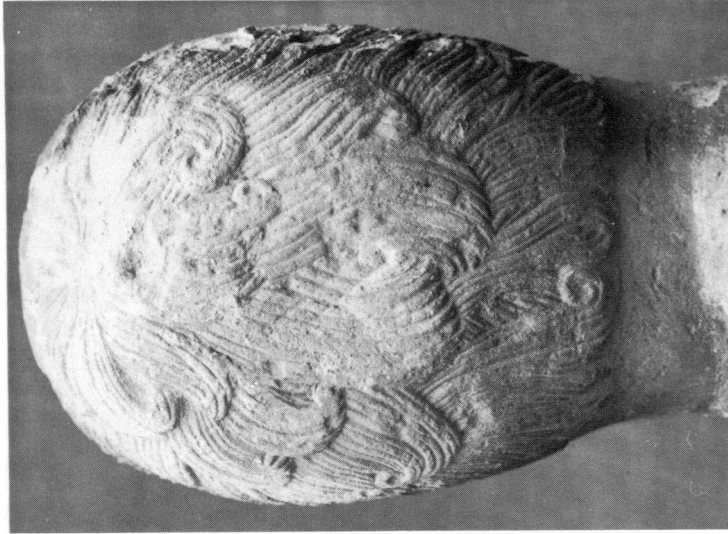
(Photo :C. N. Moore)

A. Stone head from Sutton Mandeville, Wilts. (p. 109 f.) 24 by 34 cm.



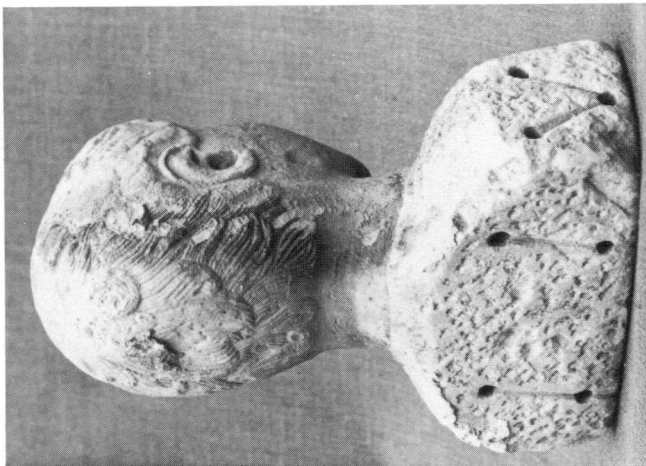
(Photo :C. N. Moore)

C. The same.



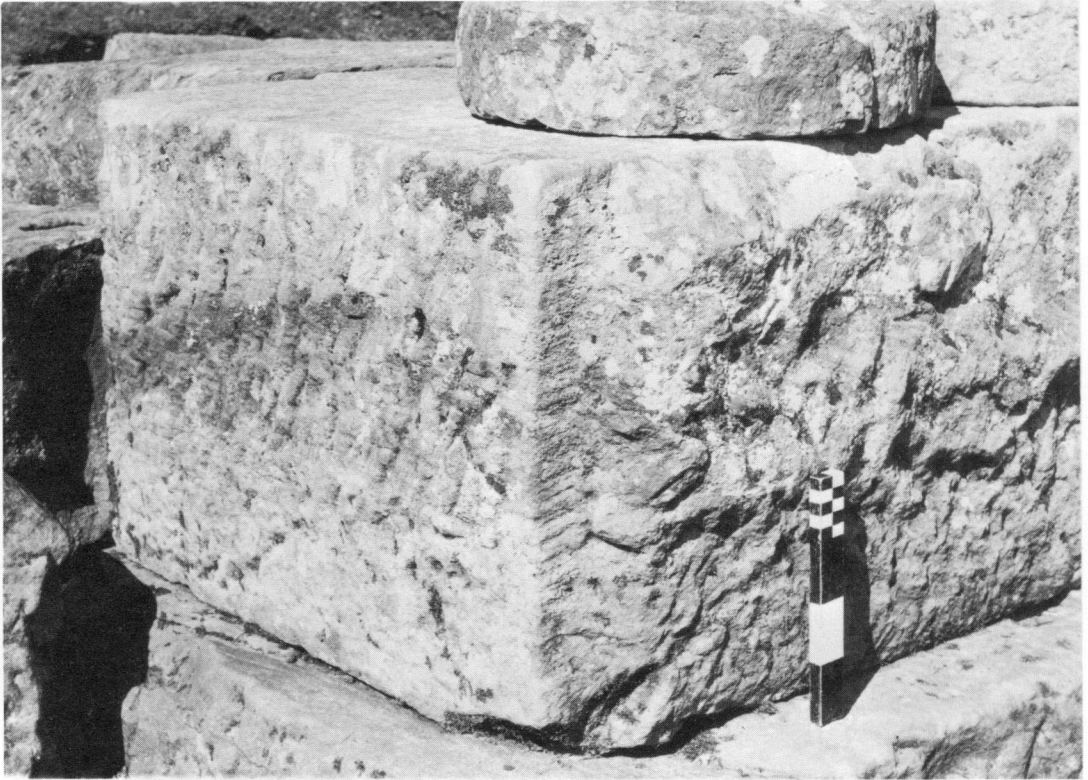
(Photo :C. N. Moore)

B. The same



(Photo :C. N. Moore)

A. Stone head from Sutton Mandeville, Wilts.
(p. 109 f.). 24 by 34 cm.



(Photo: T. F. C. Blagg)

A. Block from the east gate of the fort at Chesters, Northumberland, showing the toolmarks of drove (vertical edge), adze (left-hand and lower right-hand sides) and axe of adge (upper right). Scale 20 cm (pp. 157, 162).



(Photo: T. F. C. Blagg)

B. Column-base from the villa at North Leigh, Oxfordshire. Scale: 20 cm. (p. 162).

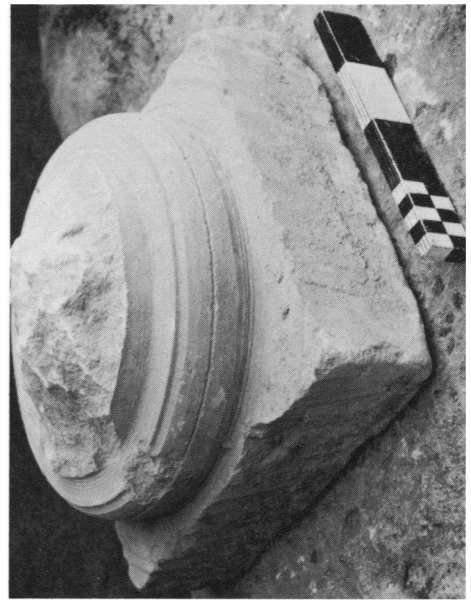


(Photo: T. F. C. Blagg)

C. Miniature Corinthian column capital from Cirencester (pp. 163, 165).



(Photo: T. F. C. Blagg)
A (left). Capital and part of the shaft of a column from the villa at Great Witcombe, Gloucestershire. Scale 20 cm. (pp. 161, 163, 166).



(Photo: T. F. C. Blagg)
B (above). Fragment of a cormice-moulding from Cirencester (p. 163).

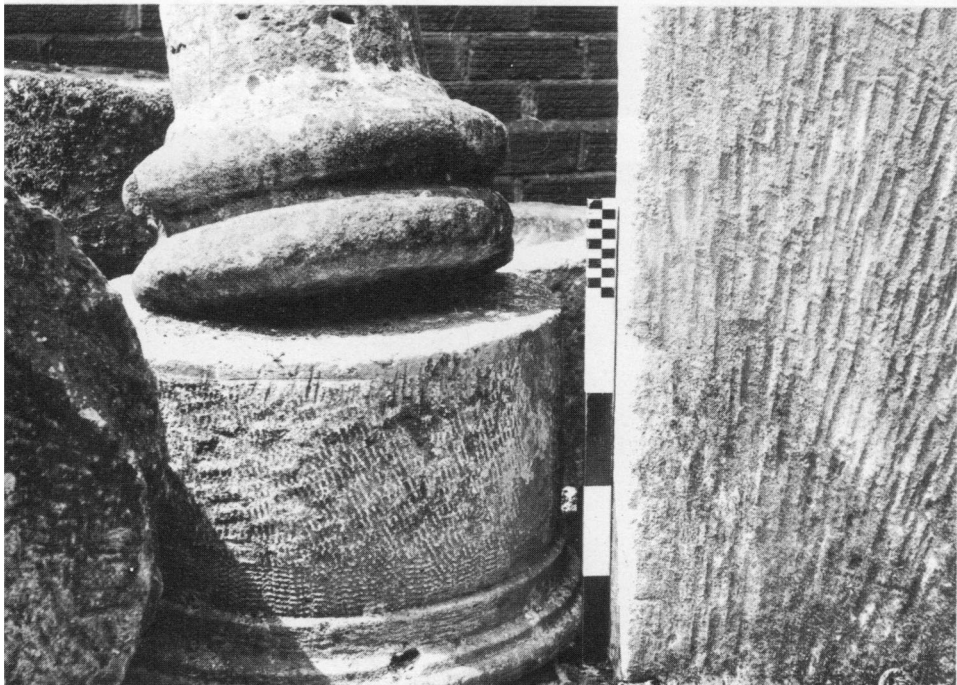
(Photo: T. F. C. Blagg)
C (right). Broken column-base from the villa at Great Witcombe, Gloucestershire, with rilling from lathe-tooling on the mouldings and toolmarks of an adze on the plinth. Scale: 20 cm (p. 166).





(Photo: T. F. C. Blagg)

A. Top of the abacus of the Great Witcombe capital (PL. XIX A). The dowel-hole is partly filled with mortar. Scale 20 cm (p. 167).



(Photo: T. F. C. Blagg)

B. Left, column-drum (upside down); right, underside of a sarcophagus. Cirencester.
Scale 50 cm (pp. 162, 164).



(Photo: T. F. C. Blagg)

A. Column capital from Bridge Street, Chester (p. 160).



(Photo: T. F. C. Blagg)

B. Column capital found in the principia of the fortress at Chester, 1969 (pp. 160-1).



(Photo: G. D. B. Jones)

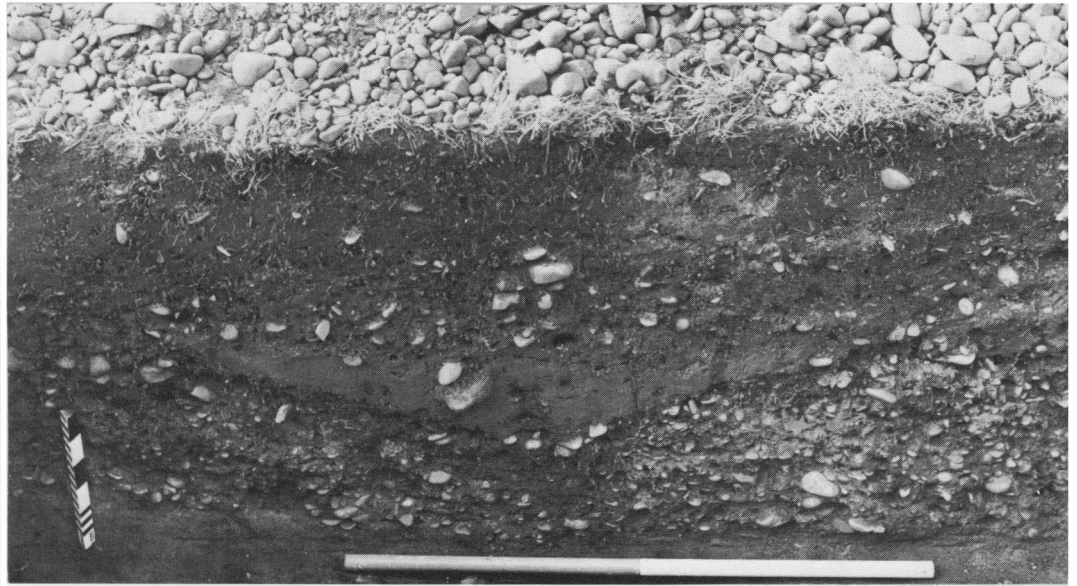
A. Line of ditches approaching Mile-fortlet 1, Biglands, from south-east (p. 236). The Mile-fortlet is seen beyond the farm.



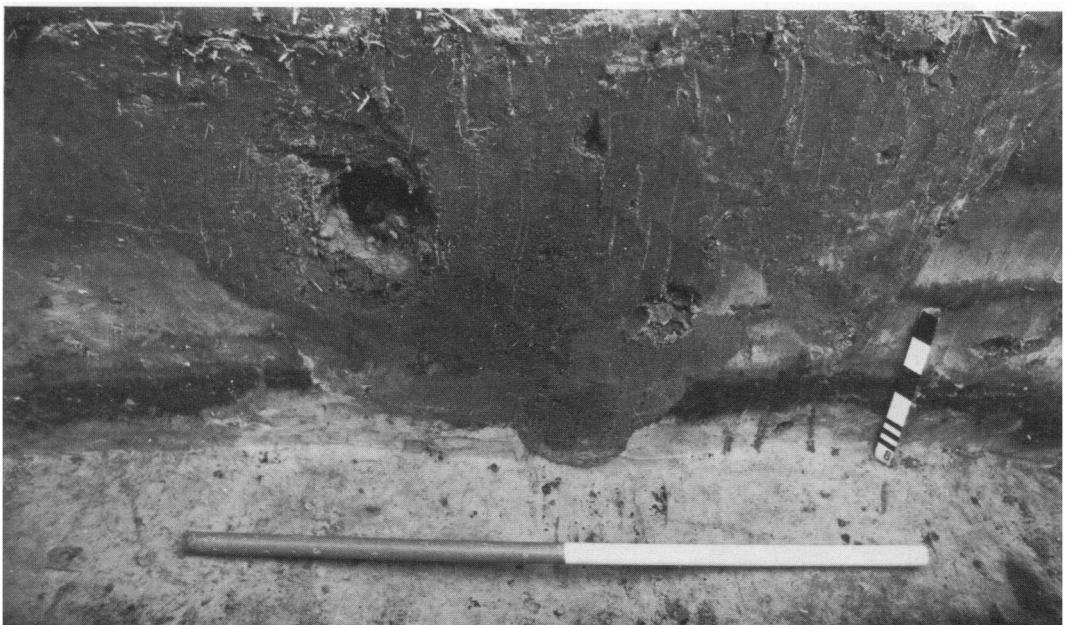
(Photo: G. D. B. Jones)

B. Tower 2B, Campfield, showing as a crop-mark with the line of the forward ditch also showing on the storm beach. The present foreshore lies to the left. (p. 236).

PLATE XXIII



A. Biglands: section across the rearward ditch (pp. 238 f.).



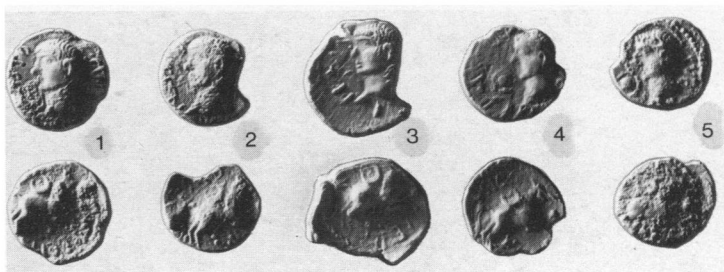
B. Cardurnock: section across the rearward ditch. Note final re-cut to far right (pp. 241 f.).

PLATE XXIV



(Photo: John Boyden)

A. Newly discovered Roman fort at Crab Farm, Shapwick, Dorset (p. 280). View from the north west.



(Photo: Institute of Archaeology, Oxford)

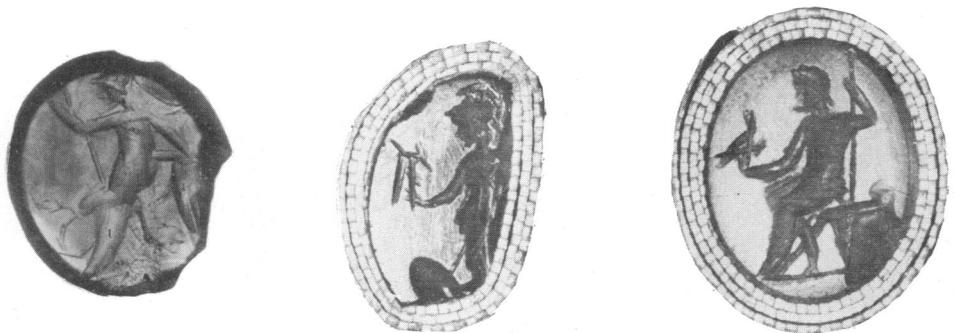
B. An Icenian coin-legend (p. 276). Coins of Subippasto. Scale 1 : 1.

PLATE XXV



(Photo: National Museum of Wales.)

A. 'Dolphin' antefixes from the same mould: (1) Exeter, constructional levels of *thermae*; (2) Exeter, late second-century context; (3) Caerleon, early building on site of Fortress Baths; (4) Caerleon, roof-fall of barracks. Scale: 1:3.



(Photos: M. Henig)

B. Gem-stone from Wroxeter (p. 284). Scale 4:1.

C. Gem-stone from Bath (p. 284). Scale 3:1.

D. Gemstone from Bath (p. 284). Scale: 3:1.

PLATE XXVI



(Photo: W. A. C. Sharp)

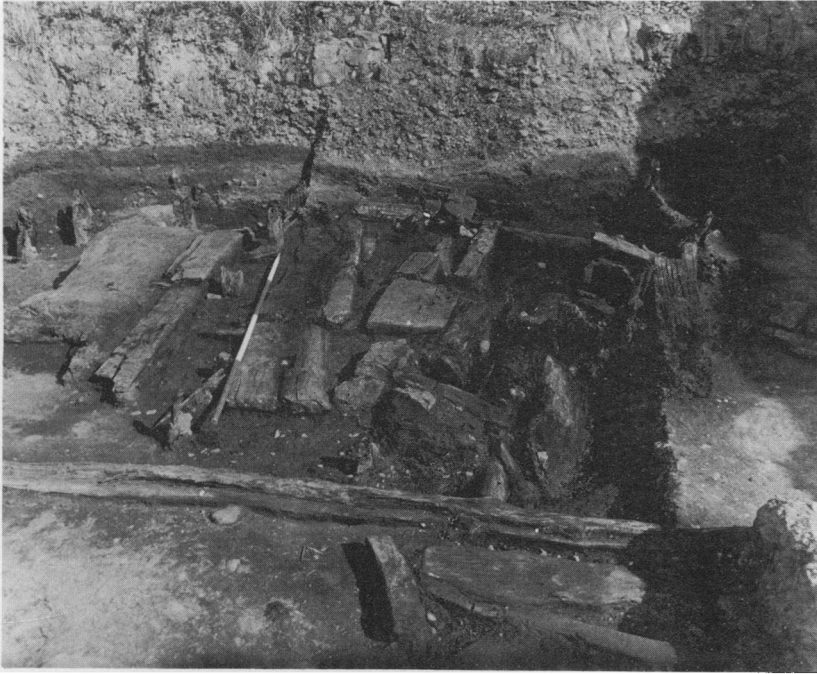
A. Bothwellhaugh, Lanarks.: cold plunge in bath-house of Roman fort. Scale in inches (p. 304).



(Photo: C. M. Daniels)

B. Wallsend, Northumberland: north-east corner of Roman fort showing rampart, intervallum road and buildings of Periods I A/B and II. Outlined in road are the corner-tower and tower of north gate (p. 306).

PLATE XXVII



(Photo: D. Charlesworth)

A. Carlisle: north end of site looking north, showing demolished building beneath the road, and the work-benches to right of scale (in half-metres) (p. 310).



(Photo: D. Charlesworth)

B. Carlisle: re-used timbers, c. A.D. 80, drilled to hold uprights for wattle hut. Note shoe in left foreground (p. 311).

PLATE XXVIII



(Photo: G. D. B. Jones)

A. Stainmore Pass, Westmorland. Signal-station south of Punch Bowl Inn (p. 312).



(Copyright: Leicestershire Museums)

B. Leicester, Norfolk Street: the aisled building from the east (p. 327).



(Photo: J Wilson)

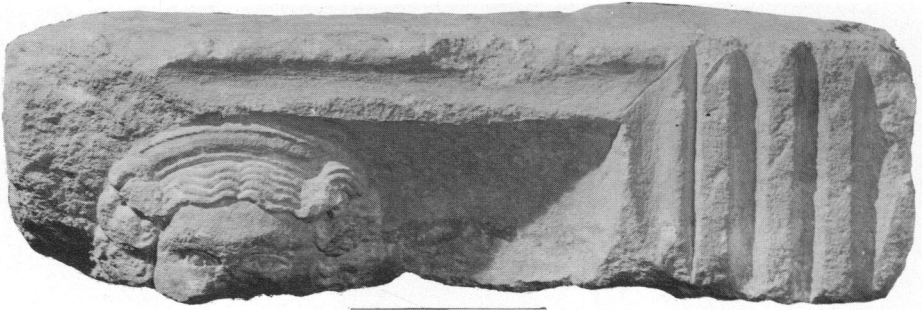
A. Cirencester, Glos.: Collapsed timber-framed internal wall in Building VI, 5, looking north (p. 354). Scale in half metres.



(Photo: T. Ward)

B. Chester, Abbey Green: bread-ovens on north-west angle of Newstead's rampart-building (p. 320). Scale in half metres.

PLATE XXX



(Photo: T. J. Hurst, Museum of London)

A. London: sculptured block re-used in riverside wall (p. 347). Head of Venus, diademed 1:8 (Length 94.5 cm: Scale in 10 cms.)



(Photo: T. J. Hurst, Museum of London)

B. London: sculptured block re-used in riverside Wall (p. 347). Head of Mars, 1:8 helmeted. (Length 90 cm: Scale in 10 cms.)



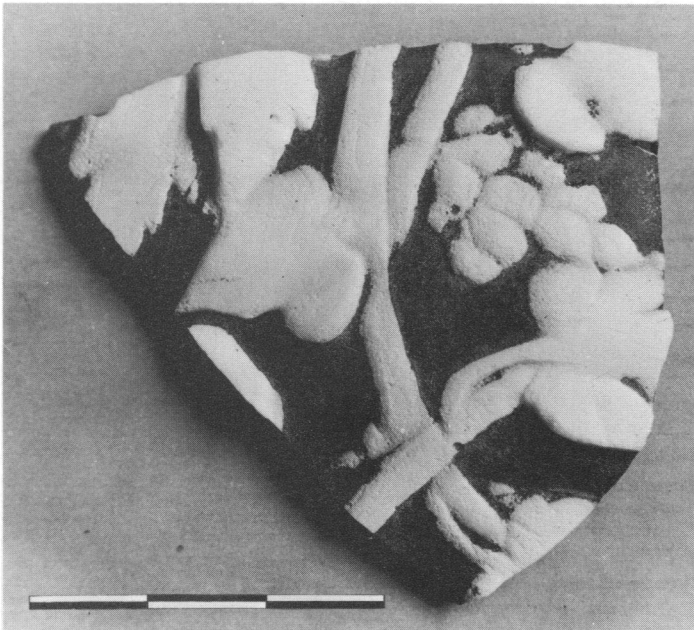
(Photo: T. J. Hurst Museum of London)

C. London: the same. Vulcan with anvil, hammer and tongs, and Minerva with inverted spear, shield and owl, 1:11 (p. 347). (Length 156 cm: Scale in 10 cms.)



(Photo: J. S. Earp)

A. Southwark, 66 Borough High Street: from left, brushwood, posts and collapsed wattle revetment. The edge of the channel is to right (p. 351). Scale in feet.



(Photo: J. S. Earp)

B. Southwark, the same: fragment of cameo glass, probably from a small amphora (p. 352).
Scale in centimetres (1.5 : 1).

PLATE XXXII



(Photo: British Museum; copyright reserved)

A. Chesterton, Hunts.: silver cup of Innocentia and Viventia (pp. 333, 385). Scale 1:2.



(Photo: British Museum; copyright reserved)

B. Chesterton: silver cup of Publianus (pp. 333, 385). Scale 1:2.



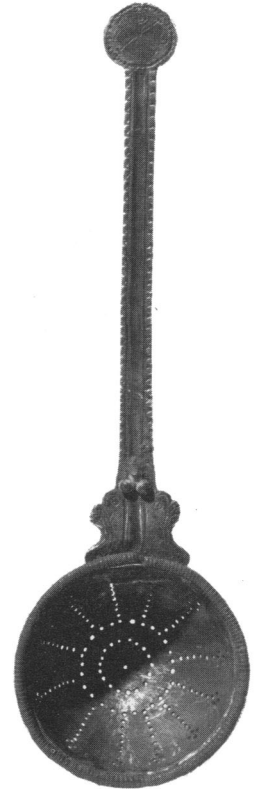
A



B



C



D

(Photo: British Museum; copyright reserved)

- A. Chesterton: silver plaque with *ancilla* inscription (pp. 333, 386). Scale 1 : 2.
- B. Chesterton: silver plaque with Chi-Rho (pp. 333, 386). Scale 1 : 2.
- C. The Same: gold disc with Chi-Rho (pp. 333, 386). Scale 1 : 1
- D. The same: silver strainer with handle (pp. 333, 386). Scale 1 : 2.

PLATE XXXIV



(Photo: British Museum; copyright reserved)

A. Chesterton: decorated silver jug (p. 333). Scale 1 : 2.



(Photo: British Museum; copyright reserved)

B. The same: silver cup (the handles were found detached) (p. 333). Scale 1 : 2.

PLATE XXXV



(Photo: T. J. Hurst, Museum of London)

London: altar to Jupiter (pp. 347, 378). Scale 1:5.

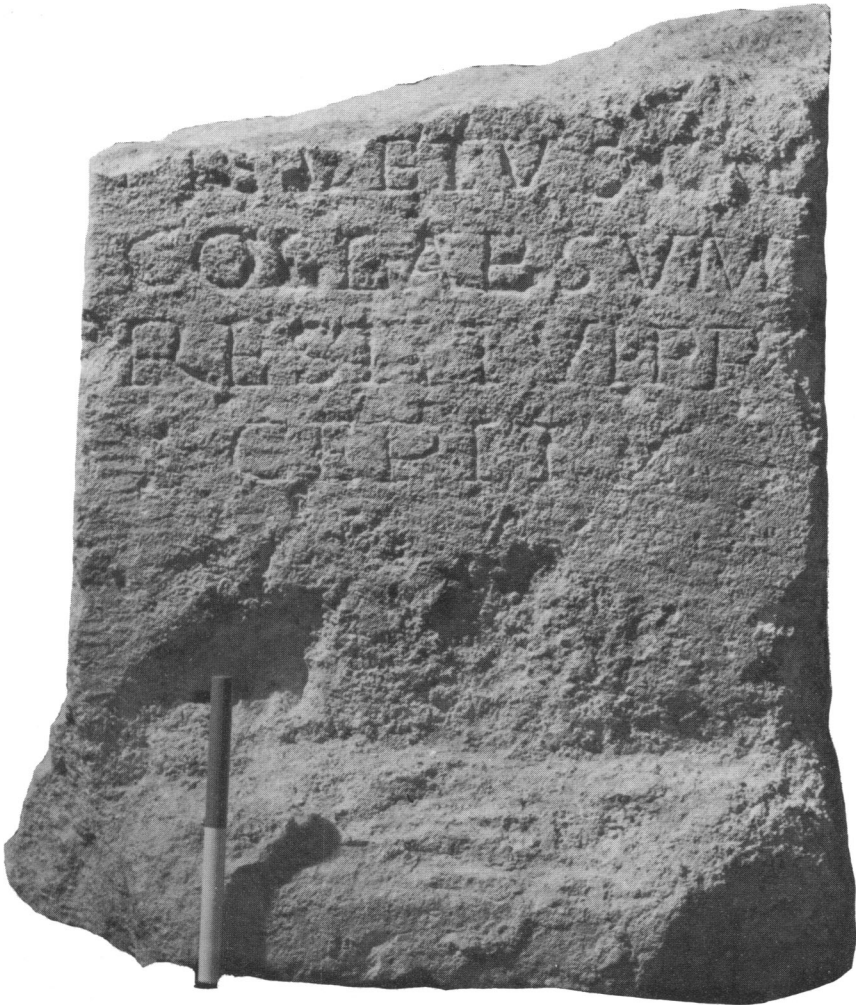
PLATE XXXVI



(Photo: T. J. Hurst, Museum of London)

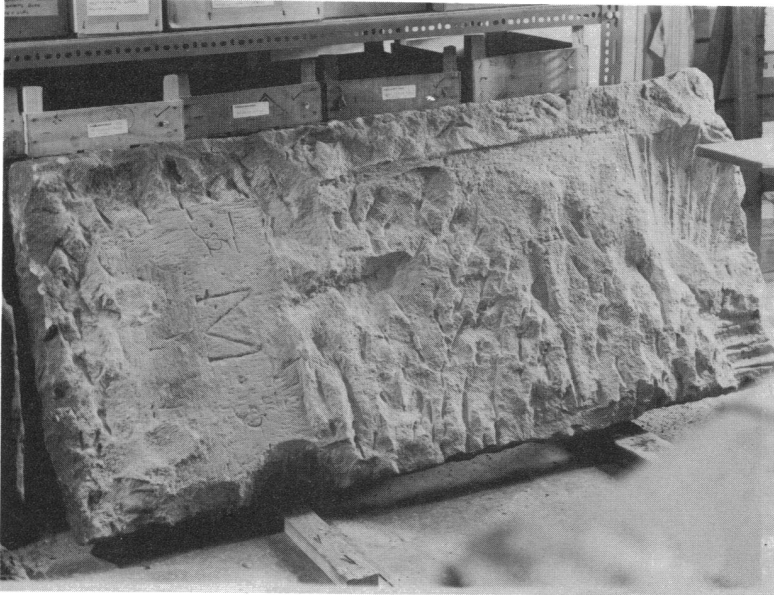
London: altar for temple of Isis, upper half (pp. 347, 378). Scale 1 : 5.

PLATE XXXVII



(Photo: T. J. Hurst, Museum of London)
London: altar for temple of Isis, lower half (pp. 347, 378). Scale 1:5.

PLATE XXXVIII



A. Catterick, Yorks.: tombstone (p. 380).

(Photo: Bowes Museum, Barnard Castle)



(Photo: Hunterian Museum, Glasgow)

B. Bothwellhaugh, Lanarks.: inscribed tablet (p. 382). Scale 1: 4.



(Photo: Bowes Museum, Barnard Castle)

C. Piercebridge, Co. Durham: inscribed underside of column-base. (p. 380). Scale 1: 10.