


# A Cost-Utility Analysis of Endovascular Thrombectomy in a Real-World Setting

Prosper S. Koto, Sherry X. Hu, Karim Virani, Wendy L. Simpkin,  
Christine A. Christian, Huiling Cao, Jai J. S. Shankar , Stephen J. Phillips

**ABSTRACT:** *Objective:* Endovascular thrombectomy (EVT) is efficacious for ischemic stroke caused by proximal intracranial large-vessel occlusion involving the anterior cerebral circulation. However, evidence of its cost-effectiveness, especially in a real-world setting, is limited. We assessed whether EVT ± tissue plasminogen activator (tPA) was cost-effective when compared with standard care ± tPA at our center. *Method:* We identified patients treated with EVT ± tPA after the Endovascular treatment for Small Core and Anterior circulation Proximal occlusion with Emphasis on minimizing computed tomography to recanalization times trial from our prospective stroke registry from February 1, 2013 to January 31, 2017. Patients admitted before February 2013 and treated with standard care ± tPA constitute the controls. The sample size was 88. Cost-effectiveness was assessed using the net monetary benefit (NMB). Differences in average costs and quality-adjusted life years (QALYs) were estimated using the augmented inverse probability weighted estimator. We accounted for sampling and methodological uncertainty in sensitivity analyses. *Results:* Patients treated with EVT ± tPA had a net gain of 2.89 [95% confidence interval (CI): 0.93–4.99] QALYs at an additional cost of \$22,200 (95% CI: –28,902–78,244) per patient compared with the standard care ± tPA group. The NMB was \$122,300 (95% CI: –4777–253,133) with a 0.85 probability of being cost-effective. The expected savings to the healthcare system would amount to \$321,334 per year. *Conclusion:* EVT ± tPA had higher costs and higher QALYs compared with the control, and is likely to be cost-effective at a willingness-to-pay threshold of \$50,000 per QALY.

**RÉSUMÉ:** *Analyse coût-efficacité de la thrombectomie endovasculaire dans un contexte réel. Objectif :* La thrombectomie endovasculaire (TE) est efficace dans le cas d'accidents ischémiques cérébraux (AIC) causés par une occlusion proximale de l'artère cérébrale antérieure. Toutefois, les preuves d'un bon rapport coût-efficacité, particulièrement dans le cadre d'une pratique réelle, demeurent limitées. Nous avons ainsi évalué au sein de notre établissement dans quelle mesure la thrombectomie endovasculaire jumelée à un traitement au moyen d'un activateur tissulaire du plasminogène (t-PA) étaient davantage rentables en comparaison avec des soins usuels également jumelés à un traitement de t-PA. *Méthodes :* En consultant nos registres prospectifs, nous avons identifié des patients traités par une thrombectomie endovasculaire jumelée à un traitement de t-PA après avoir subi, du 1<sup>er</sup> février 2013 au 31 janvier 2017, un traitement endovasculaire destiné à un petit AVC central et ischémique à occlusion proximale avec un accent mis sur la minimisation du temps de recanalisation par tomographie. Les patients hospitalisés avant février 2013 et auxquels des soins usuels avaient été prodigués de concert avec l'administration d'un t-PA ont fait partie de notre groupe témoin. Au total, notre échantillon était formé de 88 patients. Nous avons évalué le rapport coût-efficacité au moyen du concept d'avantage monétaire net (AMN). Nous avons également estimé les différences en ce qui concerne les coûts moyens et l'indicateur QALY (*quality-adjusted life years*) en faisant appel à un estimateur pondéré par l'inverse de la probabilité inverse (*augmented inverse probability weighted estimator*). Enfin, nous avons tenu compte de l'incertitude de notre échantillonnage et de nos choix méthodologiques dans nos analyses de sensibilité. *Résultats :* Les patients traités par thrombectomie endovasculaire et l'administration d'un t-PA ont donné à voir un gain net de 2,89 années selon l'indicateur QALY (IC 95 % : 0,93 – 4,99) pour un coût additionnel de 22 200 \$ (IC 95 % : –28,902 – 78,244) par patient si on les compare à notre groupe témoin. L'AMN s'est quant à lui élevé à 122 300 \$ (IC 95 % : –4 777 – 253 133), sa probabilité d'être rentable atteignant 0,85. À cet égard, les économies annuelles pour le système de soins de santé pourraient atteindre les 321 334 \$. *Conclusion :* Il appert que la thrombectomie endovasculaire jumelée à un traitement de t-PA entraînent des coûts plus élevés et un meilleur indicateur QALY en comparaison avec notre groupe témoin. Il est probable qu'une telle approche soit rentable en vertu d'un seuil de disposition à payer (*willingness-to-pay threshold*) avoisinant les 50 000 \$ par année selon le QALY.

**Keywords:** Endovascular thrombectomy, Ischemic stroke, QALYS, Cost-effectiveness

doi:10.1017/cjn.2019.308

Can J Neurol Sci. 2020; 47: 50–60

From the Research Methods Unit, Nova Scotia Health Authority, Halifax, NS, Canada (PSK); Division of Neurology, Department of Medicine, Dalhousie University & Nova Scotia Health Authority, Halifax, NS, Canada (SXH, SJP); Division of Neuroradiology, Department of Diagnostic Imaging, Dalhousie University & Nova Scotia Health Authority, Halifax, NS, Canada (KV, JJSS); Queen Elizabeth II Health Sciences Centre (QEII) and Nova Scotia Health Authority, Halifax, NS, Canada (WLS, CAC); Cardiovascular Health Nova Scotia, Nova Scotia Health Authority, Halifax, NS, Canada (HC)

RECEIVED JULY 6, 2019. FINAL REVISIONS SUBMITTED SEPTEMBER 27, 2019. DATE OF ACCEPTANCE OCTOBER 2, 2019.

Correspondence to: Stephen J. Phillips, Division of Neurology, Department of Medicine, Dalhousie University and Nova Scotia Health Authority, 1796 Summer St., Room 3835B, Halifax, NS B3H 2A7, Canada. Email: [stephen.phillips@dal.ca](mailto:stephen.phillips@dal.ca)

## INTRODUCTION

Endovascular thrombectomy (EVT) is strikingly efficacious for ischemic stroke caused by proximal intracranial large-vessel occlusion involving the anterior cerebral circulation<sup>1</sup> and is recommended for eligible patients within 6 hours of stroke onset, or up to 24 hours in some cases.<sup>2</sup> While several previous studies have reported the cost-effectiveness of EVT compared to standard care practices,<sup>3–6</sup> none fully reflect the population of ischemic stroke patients in Nova Scotia or the Atlantic provinces in Canada. The present study assesses the cost-effectiveness of the use of EVT ± tissue plasminogen activator (tPA) in treating ischemic stroke, caused by proximal intracranial large-vessel occlusion involving the anterior cerebral circulation, among patients in a real-world clinical setting. The research question was, from the perspective of a third-party payer, is EVT ± tPA cost-effective compared to standard care ± tPA at our centre? If found to be cost-effective, the results from our study will contribute to making a case for the scaling up of EVT treatment at the acute stroke unit of the Queen Elizabeth II Health Sciences Centre (QEII HSC) in Nova Scotia and elsewhere.

The economic evaluation was a cost-utility analysis. The analysis was in two stages. First, propensity score matching (PSM)<sup>7</sup> and the augmented inverse probability weighted (AIPW) estimators<sup>8</sup> were used to estimate the differences in average quality-adjusted life years (QALYs) and costs – the incremental costs and QALYs – required for the cost-utility analysis. The second stage involved assessing cost-effectiveness using results from step 1, and conducting sensitivity analyses by varying the discount rates for costs and QALYs, varying the willingness-to-pay (WTP) thresholds, quantifying the sampling uncertainty using bootstrapping, and summarizing the results on cost-effectiveness planes and cost-effectiveness acceptability curves. We also highlight the financial implications of scaling-up EVT treatment at the center.

## METHODS

As an overview, economic evaluation involves comparing two or more alternative courses of action in terms of both costs and health outcomes to aid policy decisions.<sup>9</sup> An intervention that is effective and less costly, compared to an expensive and ineffective comparator, is preferred. If the intervention is effective but relatively costly, there is a trade-off between the increased health benefits and the additional costs associated with the intervention, and a WTP threshold,  $\lambda$ , serves as a benchmark for assessing cost-effectiveness.<sup>9</sup> We followed Achit et al. and Leal et al. in basing the economic evaluation on patient-level data without the use of decision analytic models.<sup>10,11</sup> The study received approvals from the Nova Scotia Health Authority (NSHA) Research Ethics Board, after submitting a detailed study protocol with clearly defined research questions, reducing the possibility of data dredging.<sup>12,13</sup>

### Target Population, Setting, and Comparators

The target population was adults in Nova Scotia who had an ischemic stroke. The age of patients in the sample ranged from 39 to 91 years. The study was based on observational data. The

**Table 1: Baseline characteristics**

	EVT ± tPA (N = 44)	Standard care ± tPA (N = 44)
Socioeconomic characteristics, n (%)		
Age		
≤68	27 (61.4)	27 (61.4)
>68	17 (38.6)	17 (38.6)
Sex		
Female	22 (50.0)	26 (59.1)
Male	22 (50.0)	18 (40.9)
Comorbidities, n (%)		
Hypertension	23 (52.3)	24 (54.6)
Atrial fibrillation	16 (36.4)	10 (22.3)
Diabetes mellitus	12 (27.3)	12 (27.3)
Dyslipidemia	20 (45.5)	13 (29.6)
Clinical characteristics		
Oxfordshire Community Stroke Project classification, n (%)		
Partial Anterior Circulation Stroke Syndrome	10 (22.7)	11 (25.0)
Total Anterior Circulation Stroke Syndrome	34 (77.3)	33 (75.0)
Systolic blood pressure at hospital arrival – mm Hg		
≤160, n (%)	30 (68.2)	33 (75.0)
>160, n (%)	14 (31.8)	11 (25.0)
Median	140	144
Interquartile range	118–164	124–160
Preadmission Oxford Handicap Score		
Median	0	0
Interquartile range	0–1	0–1
First stroke severity score		
Median	8	9
Interquartile range	7–9	7–9

tPA = tissue plasminogen activator; EVT = endovascular thrombectomy.

data came from the prospective QEII HSC Acute Stroke Registry (ASR).<sup>14</sup> The methods used for the clinical aspects of this study are described in detail elsewhere.<sup>15</sup> Briefly, data extraction involved identifying, from the ASR, out-of-hospital stroke patients treated with EVT ± tPA after our participation in the Endovascular treatment for Small Core and Anterior circulation Proximal occlusion with Emphasis on minimizing computed tomography (CT) to recanalization times (ESCAPE) trial<sup>16</sup> during the time interval February 1, 2013–January 31, 2017: these patients constitute the treatment group (EVT ± tPA). The controls were patients admitted before February 2013 who had standard care ± tPA but no EVT. These patients were followed up at 90 days poststroke. The sample size was 88 (treatment = 44, control = 44). See Table 1.

### Study Perspective, Time Horizon, and Discount Rate

The study was from the perspective of the Department of Health and Wellness in Nova Scotia. The time horizon was the remaining life expectancy of patients, given their age, gender, and survival after stroke. We followed the Canadian Agency for Drugs and Technologies in Health (CADTH) guidelines (4th edition)<sup>17</sup> for the choice of discount rates for costs and health outcomes, using a 1.5% per annum discount rate for the reference case and 3% in a sensitivity analysis (non-reference case).

### Choice of Health Outcome

The primary outcome was QALYs – derived in part, by combining health utility indexes that vary by modified Rankin Scale (mRS) score with the probability of survival after stroke and the remaining life expectancy of patients in the sample. We assumed that patients with better functional outcomes would have better QALYs than those who did not. Following Xie et al.,<sup>3</sup> we assumed that the long-term health outcomes of patients would depend on the degree of their handicap, as quantified by the mRS score at 90 days.<sup>3</sup> However, unlike Xie et al.,<sup>3</sup> we allowed for the probability of survival at 90 days poststroke to differ between the treatment groups, based on observations in the data. Health utility indexes that vary by mRS scores were obtained from Kim et al.<sup>18</sup> and matched with patients in the sample based on their mRS score at the 90-day follow-up – patients with an mRS score of 0–2 get a health utility index of 0.85, those with mRS scores 3–5 get a health utility index of 0.27, and those with mRS score of 6 at follow-up (or at discharge from the stroke unit) get a health utility index of 0.

QALYs at 90 days were estimated as:<sup>3</sup>

$$\text{QALYs} = (Q^i * 0.25) * p \quad (1)$$

where  $Q^i$  represents the health utility index that differs by mRS score;  $p$  represents the probability that the patient was alive at 90 days poststroke, estimated from a logistic regression model using a binary variable that equals 1 if the mRS score at discharge from the stroke unit or during follow-up differs from 6 as the outcome variable. After 90 days, we assumed that there would be no change in utility indexes. Consequently, QALYs for the residual life expectancy after 90 days were calculated using the formula:<sup>19</sup>

$$\text{QALYs} = Q^i * \frac{1 - e^{-rL}}{r} \quad (2)$$

where  $e$  represents Napier's constant;  $L$  represents the residual life expectancy; and  $r$ , the discount rate. Age–sex–province-specific life expectancy data for residents in Nova Scotia were obtained from Statistics Canada's life tables. The overall QALY consists of the sum of QALYs from Equations (1) and (2). The sensitivity analysis involves using health utilities derived from Hong and Saver, who in their World Health Organization's (WHO's) Global Burden of Disease Project, reported disability weights for each level of the mRS.<sup>12</sup> The disability weights were converted to health utility weights using the formula:<sup>19</sup>

$$Q^i = 1 - D^i \quad (3)$$

where  $Q^i$  denotes the health utility index, and  $D^i$  is the disability weight by mRS score. The QALYs were, again, generated using Equations (1) and (2).

We chose Kim et al.<sup>18</sup> and Hong and Saver<sup>12</sup> because they reported health utility indexes that vary by mRS scores instead of utility indexes that differ between the treatment groups. This way, differences in QALYs between the treatment groups will be driven by posttreatment differences in functional independence or lack of it.

### Health Resources and Costs

Costs include transportation costs to our center, costs of tPA and EVT, inpatient hospital day cost at the stroke unit, and rehabilitation and long-term care costs. All costs were measured in 2017 dollars, and where appropriate, costs in different year values were inflated into 2017 dollars using consumer price indexes for Nova Scotia. All costs incurred beyond 1 year were discounted at 1.5% per annum in the reference case and 3% in the sensitivity analysis.<sup>17</sup>

Patients lose 1.9 million brain cells per minute after stroke, necessitating the need for rapid travel time for recanalization.<sup>20</sup> Consequently, the analysis was based on the assumption that patients who live more than 50 km away from the QEII were transported there by air. The fees for transportation came from the Emergency Health Services (EHS) and the Department of Health and Wellness. For distances  $\leq 50$  km, we assumed ground ambulance transportation. The EHS ground ambulance service fee for medically essential transportation was \$1132 (as of April 1, 2015). Based on expert opinion, this figure represents the actual cost to the province (without subsidy) for the provision of the service. For patients more than 50 km away, we assumed air transportation by helicopter at a fee of \$10,300 per case.

The cost of tPA per person includes the one vial 100 mg of tPA and the service fee for a neurology consultation. The cost of EVT per person consists of the cost of supplies, the wages for a registered nurse, and a technician for the procedure; additional supplies, the costs of CT head with perfusion and CT Angio head and neck. Additional costs include neuroradiology fees for EVT, anesthesiologists' fees for EVT work (sourced from Pain Management and Perioperative Medicine, Dalhousie University, see Table 2). The details of tPA and EVT-related costs were obtained from the QEII Department of Diagnostic Imaging. The average inpatient treatment costs were computed based on data from the NSHA – Acute Stroke Discharges, Central Zone for the years 2015 and 2016. The average acute care inpatient cost per day was \$1488.

Data on the rehabilitation costs per day came from the Nova Scotia Rehabilitation and Arthritis Centre. The average rehabilitation cost per day was \$766. For patients transferred from our care to another acute care unit, we assumed an annual cost of \$41,200, multiplied by the remaining life expectancy to obtain the lifetime costs (5 years). For patients discharged to "other care," we assumed a 1-year one-time cost of \$11,047, which was the average cost of treating unspecified stroke, case mix group 028, for 60–79-year-old adults in Nova Scotia, as reported by Canadian Institute for Health Information.<sup>16</sup> For patients discharged home with support, we assumed an annual cost of \$36,050;<sup>21</sup> this figure was consistent with the care plan to assist full-time family caregivers, estimated at \$3004 per month, from the Nova Scotia's Department of Wellness' Homecare Fee Structure for 2015–2016.

### Confounding and Control Variables

The confounding variables included in the statistical analysis were systolic blood pressure on arrival, age,<sup>10</sup> sex,<sup>10</sup> and the

**Table 2: Per-person treatment costs**

Variable (unit)	Cost (2017 dollars)
tPA	\$2897.7
tPA (1 vial; 100 mg) <sup>1</sup>	\$2781.0
Neurologist consult <sup>1</sup>	\$116.7
EVT <sup>2</sup>	\$8814.3
Neuroradiology fee for EVT	\$744
Anesthesiologists' fees for EVT work	\$736
Supplies (Supplies based on 2016 volumes average)	\$6907.6
Tech (MIS) (Tech salary: \$32.837 + 20% benefits = \$39.39/hour)	\$52.8
RN (MIS) (RN salary: \$38.63 + 20% benefits = \$46.36/hours. All salaries based on time in MIS standards)	\$62.1
Additional supplies (Total)	\$80.3
Admin costs – includes clerical support, management support, and service contracts	\$15.1
Contrast – 20mL (\$0.16/mL)	\$3.3
Other supplies – tubing, syringes	\$15.0
Gowns, 4 (each @ \$2.76)	\$11.4
Gloves, 4 (each @ \$1.65)	\$6.8
Drapes – chest breast	\$6.6
Towels, 2 (each @ \$0.70)	\$1.4
Detector cover, 4 (each @ 3)	\$12.4
Dressing/tegaderm	\$3.2
Trays (Sterile Processing Department)	\$5.2
CT head with perfusion and CT Angio head and neck <sup>3</sup>	\$151.0
Supplies	\$39.4
Admin costs – include clerical support, management support, and service contracts)	\$15.1
Contrast – 110 mL (\$0.16/mL)	\$18.1
Other supplies – tubing, syringes, gloves	\$5.4
Linen(1 sheet, 1 pillowcase)	\$0.9
Tech (MIS): \$34.950 + 20% benefits = \$41.94/hour	\$111.6

tPA = tissue plasminogen activator; EVT = endovascular thrombectomy; RN = registered nurse, CT = computed tomography; MIS = management information system.

<sup>1</sup>Source: National Physician Database, Canadian Institute for Health Information.

<sup>2,3</sup>Source: Interventional radiology, QEII HSC.

presence of comorbidities like hypertension,<sup>10</sup> atrial fibrillation,<sup>20</sup> dyslipidemia, and diabetes mellitus.<sup>10</sup> The control variables include preadmission Oxford Handicap Score<sup>18</sup>, stroke syndrome at the time of first medical assessment, and the Oxfordshire Community Stroke Project classification of ischemic stroke subtype.<sup>22</sup> Table 1 reports the baseline characteristics of patients in the sample.

## Statistical Analyses

We used treatment effect estimators for observational data in estimating the differences in average costs and QALYS – the treatment effect or incremental costs and QALYS – required for the cost-utility analysis. The estimation of differences in average costs and QALYS followed the intention-to-treat principle. The AIPW and the PSM estimators were used to estimate the differences in average QALYS (QALYS gained) and costs.<sup>8,23,24</sup> The AIPW estimator, also known as the efficient influence function estimator, models both the outcome and the treatment probability.<sup>8</sup> However, only one of these two models must be correctly specified to consistently estimate the treatment effects, making the estimator doubly robust.<sup>8,25</sup> PSM involves matching observations based on a single variable, their propensity score.<sup>7</sup> According to Rosenbaum and Rubin, the propensity score is the conditional probability of assignment to a treatment group given observable control variables.<sup>26</sup> Rosenbaum and Rubin show that adjusting only for the propensity score was sufficient to eliminate confounding.<sup>26</sup> The implementation of the PSM estimator involved estimating the propensity scores using a logit model and then matching based on the scores, using a 1:1 matching without replacement, after specification tests.

In both estimators, an overidentification test for covariate balance, a Chi-square test, was used to check whether the covariates between the treatment groups were balanced after matching. A *p*-value < 0.05 indicates a lack of balance. Also, we used overlap plots of the estimated densities of treatment probabilities to check whether the overlap assumption was violated: the overlap assumption will be violated if an estimated density has too much mass around 0 or 1.<sup>23</sup>

In a further sensitivity analysis, the differences in average costs and QALYS were reestimated using costs and QALYS discounted at 3% using the same estimators as before. Further, incremental QALYS were estimated using QALYS generated using health utility indexes derived from Hong and Saver<sup>27</sup> discounted at 1.5% and 3% and analyzed using the same estimators. For simplicity, we refer to the analysis based on QALYS based on health utility indexes from Kim et al.<sup>18</sup> as the “reference case” (including discount rates of 1.5% and 3%) and QALYS based on health utility indexes from Hong and Saver,<sup>12</sup> the “non-reference case” (also including discount rates of 1.5% and 3%). The statistical analyses were performed using Stata software, version 15 (StataCorp).

## Assessing Cost-effectiveness

Cost-effectiveness was assessed using the net monetary benefit (NMB) and the incremental cost-utility ratio (ICUR) for robustness checks. Equation 4 defines the NMB:

$$\text{NMB} = (\lambda * \Delta E) - \Delta C \quad (4)$$

where  $\lambda$  represents the threshold value for the WTP;  $\Delta E$  is the difference in average QALYS;  $\Delta C$  is the difference in average costs. See the statistical analysis section for the estimation of  $\Delta E$  and  $\Delta C$ . Canada does not have an explicit  $\lambda$ ; consequently, initially, we assumed that  $\lambda = \$50,000$ , and in a sensitivity analysis, we allowed the value of  $\lambda$  to vary from \$0 to \$80,000 and the results were evaluated. If the estimated 95% confidence interval (CI) for the NMB excludes zero, we can

**Table 3: Unadjusted costs and quality-adjusted life years (QALYs)**

Variable	EVT ± tPA	Standard care ± tPA	Treatment effectiveness (unadjusted)	
	Mean (\$), (SE)	Mean (\$), (SE)	Difference in means (\$), (95% CI)	p-value
Average QALYs <sup>†</sup>				
90 days	0.111 (0.013)	0.038 (0.007)	0.073 (0.043–0.103)	<0.00
Discount rate @ 1.5%	8.648 (1.163)	3.196 (0.711)	5.922 (2.740–8.162)	<0.00
Discount rate @ 3%	4.379 (0.588)	1.617 (0.359)	2.762 (1.39–4.131)	<0.00
Average QALYs <sup>‡</sup>				
Discount rate @ 1.5%	6.481 (0.917)	3.905 (0.796)	2.576 (0.162–4.990)	0.04
Discount rate @ 3%	3.959 (0.556)	1.591 (0.325)	2.367 (1.087–3.648)	<0.00
Average costs				
Discount rate @ 1.5%	100,728 (16,886)	90,641 (17,907)	10,087 (–3884–59,015)	0.68
Discount rate @ 3%	96,732 (15,973)	87,260 (17,048)	9472 (–36,969–55,913)	0.69

CI = confidence interval; SE = standard error.

<sup>†</sup>QALYs generated using health utilities from the WHO's Global Disease Burden project.

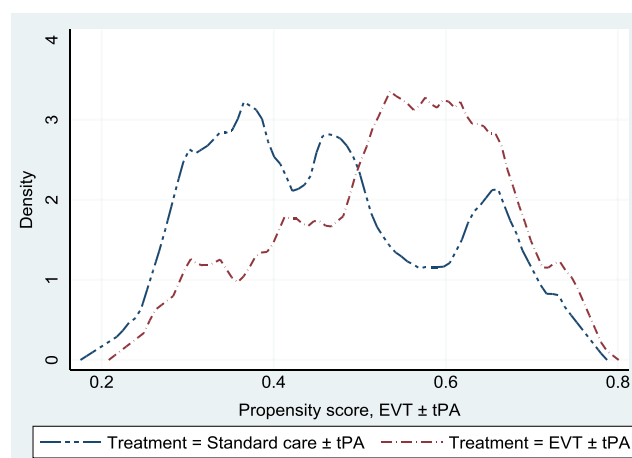
<sup>‡</sup>QALYs derived from health utilities reported in Kim et al.

infer that EVT ± tPA is cost-effective. Equation (5) defines the ICUR:

$$\text{ICUR} = \frac{\Delta C}{\Delta E} \quad (5)$$

The inference from the NMB should be identical to the inference from the ICUR. The inference and conclusions from the ICUR depend on its location in the cost-effectiveness plane.<sup>28</sup> According to Gray et al., if the ICUR falls in the northeast quadrant of the cost-effectiveness plane, the new treatment is costly but more effective, and the ICUR represents the additional amount that must be paid to gain one unit of QALY. Interventions with ICURs below  $\lambda$  are cost-effective.<sup>28</sup>

Sampling uncertainty was explored using the 95% CI for NMB and ICUR, estimated using Fieller's method based on the original sample.<sup>29</sup> We also used bootstrapping with replacement to generate 1000 pairs (replications) of  $\Delta C$  and  $\Delta E$ . In bootstrapping with replacement, the original sample serves as a proxy for the population of interest, which is then resampled with replacement to estimate the distribution empirically around the statistic of interest. The bootstrapped replications are akin to probabilistic sensitivity analysis in the case of analytic decision models. We used the bootstrapped replications also to generate 95% CI for NMB and ICUR using the percentile method. We plotted the bootstrap replications on a cost-effectiveness plane, and the 95% CI for NMB was summarized on an NMB graph showing point estimates of NMB, including the lower and upper limits of the CI for different values of  $\lambda$ . We also summarized the results using the cost-effectiveness acceptability curve, which summarizes the proportion of the distribution of the incremental costs and QALYs ( $\Delta C$  and  $\Delta E$ ) that falls within the acceptable region of the cost-effectiveness plane with changes in  $\lambda$ . Methodological uncertainty was explored by repeating the analysis, including the bootstrapping, using a discount rate of 3% for QALYs and costs for both the reference and non-reference cases.



**Figure 1:** Overlap plots of the estimated density of the predicted treatment probabilities. The overlap plots were used to check whether the overlap assumption was violated in the matched sample: the overlap assumption will be violated if an estimated density has too much mass around 0 or 1.<sup>25</sup> The assumption was not violated.

## RESULTS

### Baseline Characteristics and Descriptive Statistics

In the EVT ± tPA group, 41 out of the 44 patients had EVT done (93%), and 33 out of the 44 patients had tPA (75%). Cumulatively, 31 out of the 44 patients (70%) in the EVT ± tPA group had both EVT and tPA. In the standard care ± tPA group, 25 out of the 44 patients (57%) had tPA. Further, 37 out of 44 patients (84%) in the EVT ± tPA group were alive at the last hospital follow-up, while 24 out of 44 (55%) were alive in the standard care ± tPA group. Also, the average health utility indexes were 0.47 (95% CI: 0.35–0.58) in the EVT ± tPA group and 0.30 (95% CI: 0.19–0.41) in the standard care ± tPA group. Table 1 shows the summary statistics of the socioeconomic and clinical characteristics of patients in both treatment groups.

## Differences in Average Costs and QALYs

The overidentification test for covariate balance between the two treatment groups in the matched sample had a  $\chi^2_{(11)} = 3.5$ , ( $p$ -value = 0.98); we fail to reject the null hypothesis of covariate balance, after matching. Also, Figure 1 shows the overlapping plot of the estimated densities of treatment probabilities to check whether the overlap assumption was violated. From the figure, none of the plots had too much probability mass near 0 or 1, and the two densities overlap; hence, there is no evidence that the overlap assumption was violated.

The probability of being alive used in adjusting life years was 0.86 (95% CI: 0.78–0.94) in the EVT  $\pm$  tPA group and 0.51 (95% CI: 0.40–0.63) in the standard care  $\pm$  tPA group. Table 3 reports the unadjusted costs and QALYs, and the unadjusted difference in means. The table shows results for QALYs at 90 days, and lifetime QALYs discounted at 1.5% and 3%. In all cases, patients treated with EVT  $\pm$  tPA had better outcomes in the form of QALYs than those treated with standard care  $\pm$  tPA ( $p$ -value < 0.05). In the case of costs, the average costs for patients treated with EVT  $\pm$  tPA appear relatively larger compared with costs associated with the standard care  $\pm$  tPA; however, the difference in costs was not statistically different from zero ( $p$ -value > 0.05).

Table 4 shows the average differences in QALYs – QALYs gained – for four cases based on the PSM and the AIPW estimators. Cases 1 and 2 constitute the reference case, and 3 and 4, the non-reference case. In case 1, QALY was discounted at 1.5% and discounted at 3% in case 2. From the table, the positive QALYs gained are indicative that patients treated with EVT  $\pm$  tPA had better outcomes than those in the control group (95% CI excludes zero). The results for cases 3 and 4 were identical to cases 1 and 2. The results for all four cases were identical across the two estimators. Cases 5 and 6 on table show the results for the differences in average costs between the treatment groups. The difference in average costs was positive, with the implication that EVT  $\pm$  tPA appears costly; however, the difference was not statistically different from zero (the 95% CI did not exclude zero) across the two estimators and discount rates.

The results from both unadjusted and matched samples were identical: EVT  $\pm$  tPA was effective and appeared relatively costly, but the difference in average costs was not statistically different from zero – the 95% CI spanned zero.

## Cost-effectiveness Results

The difference in average costs and QALYs results reported showed that the conclusions were not sensitive to the estimator used in the analysis. Consequently, the inputs for the cost-utility analysis were based on results from the AIPW estimator, mainly because of its double-robust property. See Table 5. The average cost for treating patients with EVT  $\pm$  tPA was \$109,387 (95% CI: 69,822–148,952); the corresponding cost for standard care  $\pm$  tPA was \$87,187 (95% CI: 52,946–121,429). The difference in average costs between the treatment groups was \$22,200 (95% CI: –29,527–73,926). Similarly, the average QALYs for EVT  $\pm$  tPA was 6.73 (95% CI: 5.04–8.41) and 3.84 (95% CI: 2.58–5.10) for the standard care  $\pm$  tPA. The intervention was found to have a net gain of 2.89 (95% CI: 1.05–4.72) QALYs. The NMB was \$122,300 (95% CI: \$1656–\$242,944), based on  $\lambda = \$50,000$  per QALY. Similarly, the ICUR was \$7682 per QALY gained (95% CI: –\$9552–\$48,611). The probability that

**Table 4: Confounder-adjusted differences in average QALYs and costs**

	Propensity score matching estimator	Augmented inverse probability weighted estimator
Differences in average QALYs <sup>†</sup>		
Case 1: Discount rate @ 1.5%		
Difference in means	2.58	2.89
(95% CI)	(0.54–4.61)	(1.05–4.72)
Case 2: Discount rate @ 3%		
Difference in means	2.38	2.54
(95% CI)	(1.29–3.347)	(1.52–3.57)
Differences in average QALYs <sup>‡</sup>		
Case 3: Discount rate @ 1.5%		
Difference in means	5.36	5.90
(95% CI)	(3.12–7.60)	(3.90–7.90)
Case 4: Discount rate @ 3%		
Difference in means	2.71	3.12
(95% CI)	(1.58–3.85)	(1.97–4.28)
Differences in average costs		
Case 5: Discount rate @ 1.5%		
Difference in means	\$9845	\$22,200
(95% CI)	(–36,750–56,439)	(–29,527–73,926)
Case 6: Discount rate at 3%		
Difference in means	\$9153	\$20,892
(95% CI)	(–34,847–53,153)	(–27,864–69,649)

CI = confidence interval.

The confounding variables included in all three models were hypertension, systolic blood pressure at admission, atrial fibrillation, age, dyslipidemia, diabetes mellitus, hypertension, preadmission Oxford Handicap Score, and sex.<sup>†</sup>QALYs derived from health utilities reported in Kim et al. (2011) – the reference case.

<sup>‡</sup>QALYs generated using health utilities from the WHO's Global Disease Burden project.

EVT  $\pm$  tPA is cost-effective at the \$50,000 threshold was 0.98 (or 98%). Table 5 also shows the results based on the bootstrapped sample. The results from the bootstrapped sample were identical to the results based on the original sample, with a 0.85 probability that EVT  $\pm$  tPA is cost-effective.

## Sensitivity Analyses

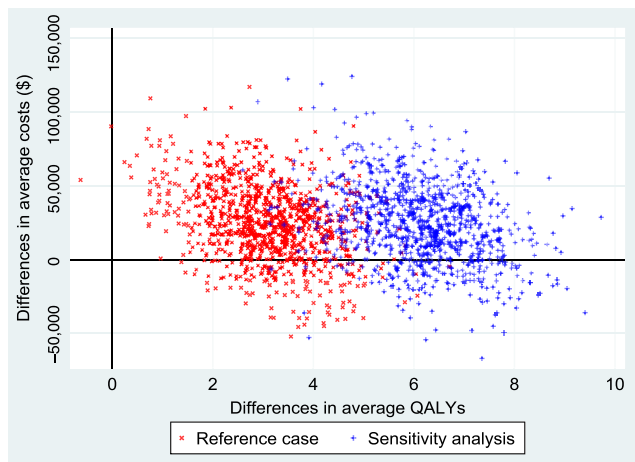
*Scenario 1: Sampling Uncertainty.* Figure 2 shows the empirical distribution of the differences in average costs and QALYs ( $\Delta C$  and  $\Delta E$ ) between the 2 groups from 1000 bootstrapped

**Table 5: Cost-utility analysis results, reference case (discount rate at 1.5%)**

	Original sample (N = 88)		Bootstrap sample (with replacement, N = 1000)	
	EVT ± tPA	Standard care ± tPA	EVT ± tPA	Standard care ± tPA
Average costs (95% CI)	\$109,387 (69,822–148,952)	\$87,187 (52,946–121,429)	\$109,447 (73,803–150,880)	\$84,734 (53,464–119,496)
Average QALYs (95% CI)	6.73 (5.04–8.41)	3.84 (2.58–5.10)	6.72 (4.99–8.49)	3.64 (2.33–5.02)
Difference in average costs (95% CI)	\$22,200 (–\$29,527–\$73,926)		\$24,713 (–\$28,902–\$78,244)	
Difference in average QALYs (95% CI)	2.89 (1.05–4.72)		3.08 (0.93–4.99)	
Net monetary benefit (95% CI)	\$122,300 (\$1656–\$242,944)		\$129,287 (–\$4777–\$253,133)	
ICUR (95% CI)	\$7682 (–\$9552–\$48,611)		\$8024 (–\$8126–\$53,194)	
The probability that EVT ± tPA is cost-effective at WTP of \$50,000/QALY	0.98		0.85	

QALYs = quality-adjusted life years; Net monetary benefit estimated using a willingness-to-pay threshold of \$50,000 per QALY gained; ICUR = the incremental cost-utility ratio.

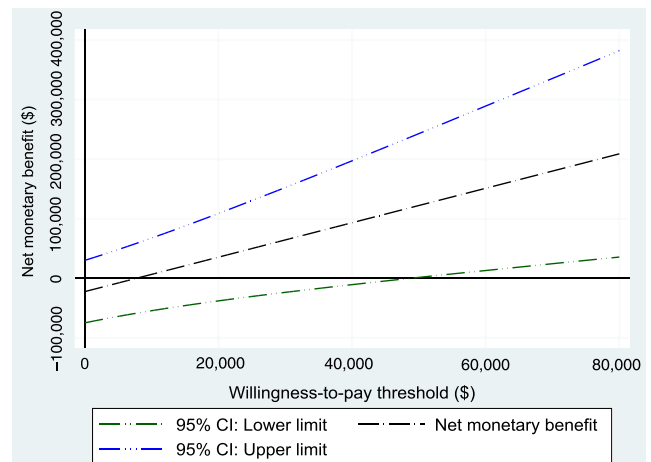
The average costs and QALYs and their differences were estimated using the confounder-adjusted augmented inverse probability weighted estimator.



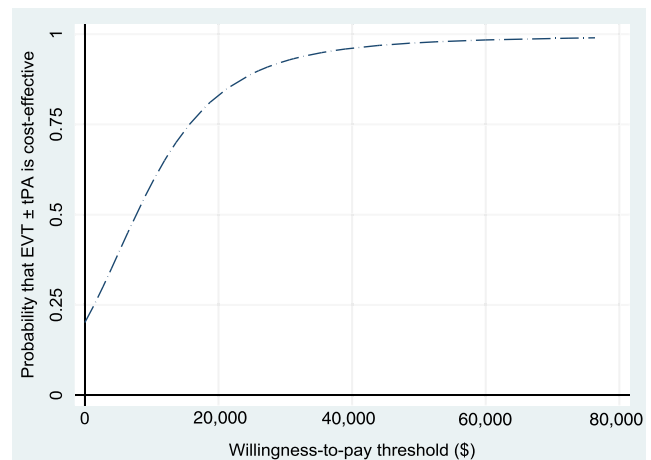
**Figure 2:** Cost-effectiveness plane from 1000 bootstrapped replications. The reference case represents QALYs estimated from health utility indexes from Kim et al. (2011), and the sensitivity (non-reference case), based on health utility indexes from Hong and Saver (2009). The negative average cost differentials represent situations where EVT ± tPA was less costly than standard care ± tPA. The probability that EVT ± tPA is cost-effective at a willingness-to-pay threshold of \$50,000 was 0.85 in the reference case and 0.92 in the sensitivity analysis. These results were based on a discount rate of 1.5% per annum.

replications, for both the reference and non-reference cases. Each point on the graph represents results from one run of the model. From the figure, the majority of the points were in the northeast and southeast quadrants of the cost-effectiveness plane. Points below the horizontal reference line represent situations where EVT ± tPA was less costly and offered more health benefits.

**Scenario 2: Methodological Uncertainty: Varying WTP Threshold.** The WTP threshold,  $\lambda$ , was allowed to vary from \$0 to \$80,000, and the results were evaluated. Figure 3 shows the NMB and the associated 95% CI for different values of WTP based on the bootstrapped sample, while Figure 4 shows the cost-effectiveness acceptability curve, which shows how the probability of cost-effectiveness increases with WTP for the reference case. Both



**Figure 3:** Net monetary benefit with varying willingness-to-pay thresholds from the 1000 bootstrapped replications (reference case). As expected, the net monetary benefit increases as the willingness-to-pay threshold increases.



**Figure 4:** Cost-effectiveness acceptability curve (reference case, based on 1000 bootstrapped replications, using 1.5% discount rate) showing the probability that EVT ± tPA is cost-effective for different values of the willingness-to-pay threshold.

**Table 6: Cost-utility analysis results, reference case (discount rate at 3%)**

	Original sample (N = 88)		Bootstrap sample (with replacement, N = 1000)	
	EVT ± tPA	Standard care ± tPA	EVT ± tPA	Standard care ± tPA
Average costs (95% CI)	\$104,755 (67,512–141,999)	\$83,863 (51,502–116,224)	\$104,857 (71,144–143,400)	\$81,698 (52,059–114,445)
Average QALYs (95% CI)	4.11 (3.08–5.14)	1.57 (1.05–2.08)	4.11 (3.06–5.15)	1.43 (0.86–2.02)
Difference in average costs (95% CI)	\$20,892 (–\$27,865–\$69,650)		\$23,159 (–\$27,189–\$73,208)	
Difference in average QALYs (95% CI)	2.54 (1.52–3.57)		2.67 (1.49–3.73)	
Net monetary benefit (95% CI)	\$106,108 (\$102,990–\$109,226)		\$110,341 (\$20,076–\$199,139)	
ICUR (95% CI)	\$8225 (–\$10,350–\$36,030)		\$8674 (–\$8,372–\$37,349)	
The probability that EVT ± tPA is cost-effective at WTP of \$50,000/QALY	0.99		0.88	

QALYs = quality-adjusted life years; Net monetary benefit estimated using a willingness-to-pay threshold of \$50,000 per QALY gained; ICUR = the incremental cost-utility ratio.

The average costs and QALYs and their differences were estimated using the confounder-adjusted augmented inverse probability weighted estimator.

**Table 7: Cost-utility analysis results, non-reference case (discount rate at 1.5%)<sup>†</sup>**

	Original sample (N = 88)		Bootstrap sample (with replacement, N = 1000)	
	EVT ± tPA	Standard care ± tPA	EVT ± tPA	Standard care ± tPA
Average costs (95% CI)	\$109,387 (69,822–148,952)	\$87,187 (52,946–121,429)	\$109,689 (73,714–154,220)	\$85,454 (55,317–119,247)
Average QALYs (95% CI)	8.86 (6.89–10.83)	2.96 (1.85–4.07)	8.99 (6.97–10.97)	2.85 (1.60–4.38)
Difference in average costs (95% CI)	\$22,200 (–29,527–73,926)		\$24,235 (–25,211–76,255)	
Difference in average QALYs (95% CI)	5.89 (3.90–7.90)		6.14 (3.93–8.29)	
Net monetary benefit (95% CI)	\$272,300 (\$144,373–\$400,227)		\$282,765 (\$153,675–\$419,408)	
ICUR (95% CI)	\$3769 (–\$4763–\$15,500)		\$3947 (–\$3604–\$15,312)	
The probability that EVT ± tPA is cost-effective at WTP of \$50,000/QALY	0.99		0.92	

QALYs = quality-adjusted life years; Net monetary benefit estimated using a willingness-to-pay threshold of \$50,000 per QALY gained; ICUR = the incremental cost-utility ratio.

<sup>†</sup>QALYs derived from health utility derived from disability weights reported in Hong and Saver (2009). The average costs and QALYs and their differences were estimated using the confounder-adjusted augmented inverse probability weighted estimator.

figures show that the evidence in support of the cost-effectiveness of EVT increases with increases in the WTP, as expected.

*Scenario 3: Methodological Uncertainty: Discount Rate of 3% Per Annum.* The analysis was repeated, discounting costs and QALYs at 3% (See Table 6). Again, there was no change in the conclusions.

*Scenario 4: Methodological Uncertainty: QALYs from Another Source.* The analysis was repeated for the non-reference case. See Tables 7 (discount rate of 1.5%) and 8 (discount rate of 3%) for the results. Also, see Figure 5. Again, there was no change in the conclusions.

## Summary of the Results

After accounting for uncertainty, patients treated with EVT ± tPA had a net gain of 2.89 (95% CI: 0.93–4.99) QALYs than those treated with standard care ± tPA (at a discount rate of 1.5%) and a net gain of 2.54 (95% CI: 1.49–3.73) QALYs at a discount rate of 3%, all in the reference case. In the non-reference case, the difference in QALYs was 5.89 (95% CI: 3.93–8.29) at a discount rate of 1.5% and 3.12% (95% CI: 1.99–4.20) at a discount rate of 3%. Concerning costs, the difference in costs was not statistically different from zero. The difference in average costs was \$22,200 (95% CI: –28,902–78,244) when the discount rate was 1.5% and \$20,892 (95% CI: –27,189–73,208) when the discount rate was 3%. In the cost-utility analyses, again, after accounting for

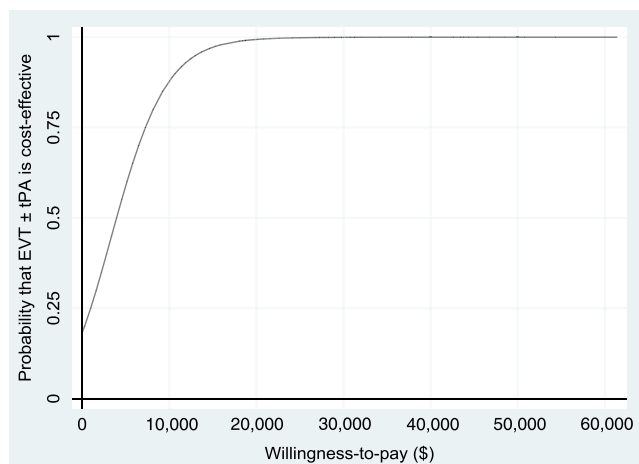


**Table 8: Cost-utility analysis results, non-reference case (discount rate at 3%)<sup>†</sup>**

	Original sample (N = 88)		Bootstrap sample (with replacement, N = 1000)	
	EVT ± tPA	Standard care ± tPA	EVT ± tPA	Standard care ± tPA
Average costs (95% CI)	\$104,755 (67,512–141,999)	\$83,863 (51,502–116,224)	\$105,084 (70,979–147,397)	\$82,383 (53,614–114,527)
Average QALYs (95% CI)	4.63 (3.50–5.76)	1.51 (0.94–2.07)	4.55 (3.53–5.55)	1.44 (0.81–2.22)
Difference in average costs (95% CI)	\$20,892 (–\$27,865–\$69,650)		\$22,700 (–23,877–72,157)	
Difference in average QALYs (95% CI)	3.12 (1.97–4.28)		3.11 (1.99–4.20)	
Net monetary benefit (95% CI)	\$135,108 (\$47,339–\$222,877)		\$132,800 (\$48,654–\$219,128)	
ICUR (95% CI)	\$6696 (–\$8454–\$28,408)		\$7299 (–\$6820–\$28,386)	
The probability that EVT ± tPA is cost-effective at WTP of \$50,000/QALY	0.98		0.90	

QALYs = quality-adjusted life years; Net monetary benefit estimated using a willingness-to-pay threshold of \$50,000 per QALY gained; ICUR = the incremental cost-utility ratio.

<sup>†</sup>QALYs derived from health utility derived from disability weights reported in Hong and Saver. The average costs and QALYs and their differences were estimated using the confounder-adjusted augmented inverse probability weighted estimator.



**Figure 5:** Cost-effectiveness acceptability curve (non-reference case, based on 1000 bootstrapped replications, using 1.5% discount rate) showing the probability that EVT ± tPA is cost-effective for different values of the willingness-to-pay threshold.

uncertainty, the NMB was \$122,300 (95% CI: –4777–253,133) with a 0.85 probability that EVT ± tPA is cost-effective at WTP threshold of \$50,000 per QALY gained. The ICUR was \$7682 per QALY gained (95% CI: –8126–53,194) in the reference case.

#### FINANCIAL IMPLICATIONS

Our results are indicative that EVT ± tPA is likely to be cost-effective. What is less clear is the financial implications, should the policymakers decide to provide more resources to scale up EVT treatment at the QEII HSC. Based on available data from the QEII HSC, there were 1243 reported cases of ischemic stroke in 2016 in Nova Scotia. Based on the reported cases from 2012 to 2016, we projected that there would be 1400 cases in 2019. Approximately 72% of the population live within less than 50 km away from the QEII HSC and so will likely use the ground ambulance as a means of transportation, with the other 28% most

likely to use air transport to the QEII HSC. We estimated the expected transportation cost per case to be \$3699. The EVT procedure cost per case was estimated at \$8814. The average inpatient cost was \$29,760 for EVT patients (\$32,736 in the control group). There was a 30% chance that patients in the EVT ± tPA group will go to rehabilitation after discharge from the stroke unit, incurring rehabilitation costs (34% in the control group). Consequently, the expected rehabilitation costs were estimated at \$9943 in the EVT ± tPA group (\$16,929 in the control group). Concerning long-term care, from the sample, an equal number of patients from both treatment groups were transferred to long-term care at discharge from the stroke unit (two each).

Further, the mRS scores at discharge and follow-up were indicative that patients in the EVT ± tPA group had better functional outcomes than those in the control group, which will impact long-term care costs in favor of the EVT ± tPA group. Based on these assumptions, the expected cost of care per year per case was estimated at \$48,517 for the EVT ± tPA group (\$49,665 in the control group): The projected cost savings per case per year was \$1148, in the absence of long-term care costs. If we assume that 20% of new cases for 2019 will utilize the EVT procedure (280 cases), the expected annual savings to the healthcare system will amount to \$321,334 per year or \$1,606,668 in 5 years.

#### DISCUSSION AND CONCLUSION

This study evaluated the cost-effectiveness of EVT ± tPA in the treatment of stroke at the QEII HSC in Halifax, Nova Scotia, Canada, compared to standard care ± tPA, using patient-level data that reflect the local population. The analyses involved the use of the AIPW estimator to generate the inputs required for the cost-utility analysis. The results show that patients treated with EVT ± tPA had better outcomes, measured in QALYs than patients who had standard care ± tPA. The QALYs gained ranged from 2.58 to 5.90 (discount rate of 1.5%) and 2.38 to 3.12 (discount rate of 3%) in all cases evaluated. The differences in

average costs ranged from \$9845 to \$22,200 in all cases. At a discount rate of 1.5%, the ICUR ranged from \$3769 per QALY gained to \$8225 per QALY gained. The probability that EVT  $\pm$  tPA was cost-effective at a WTP threshold of \$50,000 per QALY ranged from 0.85 to 0.99. Assuming that 20% of new cases for 2019 will utilize the EVT procedure (280 cases), the expected annual savings to the healthcare system will amount to \$321,334 per year or \$1,606,668 in 5 years, if the utilization rate and the target population remains the same.

How does this result compare with others? In our study, the average QALYs for EVT  $\pm$  tPA patients at 90 days poststroke was 0.11 and 0.04 for standard care  $\pm$  tPA, with QALYs gained of 0.07 (95% CI: 0.04–0.10, see Table 3), which matches the 0.073 reported by Xie et al.<sup>3</sup> Further, the present study reported QALYs gained of 2.54 (at a discount rate of 3%, see Table 5), and an ICUR of \$8225 per QALY gained, whereas Xie et al.<sup>3</sup> – using a discount rate of 5%, and a Markov decision model – reported QALYs gained of 0.21 and an ICUR of \$11,990 per QALY gained in their base case. A Health Quality Ontario report reported an ICUR of \$11,990 per QALY gained (at a discount rate of 5%).<sup>30</sup> Further, they reported 0.35 QALYs gained and an ICUR of \$26,818 per QALY gained using data from the ESCAPE trial. The Ontario report used a discount rate of 5%, so a direct comparison of the two results may be misleading. Our approach was consistent with CADTH's recommendations (4th edition).<sup>17</sup> However, the direction of the results in both studies was consistent. Also, our results were consistent with findings in CADTH's 2018 report on EVT for patients with ischemic stroke,<sup>5</sup> and Sevick et al.<sup>6</sup>

This study was based on real-world patient-level data, which was representative of the population of Nova Scotia, therefore making the results generalizable. Access to patient-level data allowed us to control for potential confounding factors, allowing for heterogeneity, unlike analytic decision models that are based on a representative individual. We found robust evidence to support the cost-effectiveness of EVT  $\pm$  tPA compared to standard care  $\pm$  tPA. To the best of our knowledge, this study was the first to assess the cost-effectiveness of EVT using data from patients not enrolled in a clinical trial. Further, our study demonstrates the potential for leveraging patient-level data from administrative and clinical databases – real-world data – for cost-effectiveness studies. At the minimum, this study provides an objective and robust economic evaluation of the EVT treatment of ischemic stroke caused by proximal intracranial large-vessel occlusion involving the anterior cerebral circulation in Nova Scotia.

There were some limitations. There was information on where patients were referred from, but not how they arrived at our center, with the implication that assumptions had to be made about the mode of transportation. Also, there was no primary data on health utility indexes for the patients, so we had to rely on health utility indexes from the literature to generate the QALYs. Further, there was less information about the patients after the last hospital follow-up. However, this limitation will only affect 32% of the sample (28/88) who were transferred to the rehabilitation center, as 31% (27/88) were dead at last follow-up, and 35.2% (31/88) were discharged home from the stroke unit. Out of the 32% at the rehabilitation center, we assumed that those who were functionally dependent at follow-up would require long-term care. These limitations notwithstanding, based on the results

from the analyses, including the sensitivity analysis, we are confident about the robustness of our results.

## DISCLOSURES

Dr. SJP reports participation in the ESCAPE and ESCAPE-NA1 clinical trials, and in the planning and implementation of a provincial EVT program in Nova Scotia, Canada. All other authors have nothing to disclose.

## STATEMENT OF AUTHORSHIP

PSK performed the cost-utility analyses and wrote the manuscript; SXH and KV co-led the case-control study and collected the patient data; WLS collected the data for the Acute Stroke Registry; CAC maintains the Acute Stroke Registry; HC devised the algorithm for matching the cases and controls; JJSS supervised the neuroradiological aspects of the study; SJP conceived the study and supervised the neurological aspects; all authors reviewed the manuscript.

## REFERENCES

- Goyal M, Demchuk AM, Menon BK, et al. Randomized assessment of rapid endovascular treatment of ischemic stroke. *N Engl J Med*. 2015;372(11):1019–30. doi: 10.1056/NEJMoa1414905
- Boulanger J, Lindsay M, Gubitz G, et al. Canadian stroke best practice recommendations for acute stroke management: prehospital, emergency department, and acute inpatient stroke care, 6th edition, update 2018. *Int J Stroke*. 2018;13(9):949–84. doi: 10.1177/1747493018786616
- Xie X, Lambrinos A, Chan B, et al. Mechanical thrombectomy in patients with acute ischemic stroke: a cost-utility analysis. *CMAJ Open*. 2016;4(2):E316–25. doi: 10.9778/cmajo.20150088
- Kim AS, Nguyen-Huynh M, Johnston SC. A cost-utility analysis of mechanical thrombectomy as an adjunct to intravenous tissue-type plasminogen activator for acute large-vessel ischemic stroke. *Stroke*. 2011;42(7):2013–18. doi: 10.1161/STROKEAHA.110.606889
- Endovascular Thrombectomy for Patients with Ischemic Stroke: Clinical and Cost –Effectiveness. Ottawa: CADTH; 2018 Jun. (CADTH rapid response report: summary of abstracts). <https://www.cadth.ca/endovascular-thrombectomy-patients-ischemic-stroke-clinical-and-cost-effectiveness-0>; accessed December 19, 2018.
- Sevick LK, Ghali S, Hill MD, et al. Systematic review of the cost and cost-effectiveness of rapid endovascular therapy for acute ischemic stroke. *Stroke*. 2017;48(9):2519–26. doi: 10.1161/STROKEAHA.117.017199
- Abadie A, Imbens GW. Matching on the estimated propensity score. *Econometrica*. 2016;84(2):781–807. doi: 10.3982/ECTA11293
- Cattaneo MD, Drukker DM, Holland AD. Estimation of multivalued treatment effects under conditional independence. *Stata J*. 2013;13(3):407–50. <https://ideas.repec.org/a/tsj/stataj/v13y2013i3p407-450.html>; accessed October 18, 2018.
- Drummond MF, Sculpher MJ, Claxton K, Stoddart GL, Torrance GW. *Methods for the economic evaluation of health care programmes*, 4th ed. Oxford, UK; New York, NY, USA: Oxford University Press; 2015.
- Achit H, Soudant M, Hosseini K, et al. Cost-effectiveness of thrombectomy in patients with acute ischemic stroke. *Stroke*. 2017;48(10):2843–7. doi: 10.1161/STROKEAHA.117.017856
- Leal J, Ahrabian D, Davies MJ, et al. Cost-effectiveness of a pragmatic structured education intervention for the prevention of type 2 diabetes: economic evaluation of data from the Let's Prevent Diabetes cluster-randomised controlled trial. *BMJ Open*. 2017;7(1):e013592. doi: 10.1136/bmjopen-2016-013592

12. Berger ML, Sox H, Willke RJ, et al. Good practices for real-world data studies of treatment and/or comparative effectiveness: recommendations from the joint ISPOR-ISPE Special Task Force on real-world evidence in health care decision making. *Pharmacoepidemiol Drug Saf.* 2017;26(9):1033–9. doi: 10.1002/pds.4297
13. Cox E, Martin BC, Van Staa T, Garbe E, Siebert U, Johnson ML. Good research practices for comparative effectiveness research: approaches to mitigate bias and confounding in the design of nonrandomized studies of treatment effects using secondary data sources: the international society for pharmacoconomics and outcomes research good research practices for retrospective database analysis task force report—part II. *Value Health J Int Soc Pharmacoconomics Outcomes Res.* 2009;12(8):1053–61. doi: 10.1111/j.1524-4733.2009.00601.x
14. Phillips SJ, Eskes GA, Gubitz GJ, Queen Elizabeth II. Health sciences centre acute stroke team. Description and evaluation of an acute stroke unit. *CMAJ Can Med Assoc J J Assoc Medicales Can.* 2002;167(6):655–60.
15. Hu, S., Virani, K., Christian, C., et al. Case-control study of endovascular thrombectomy in a Canadian Stroke Centre. *Can J Neurol Sci.* 2019. doi: 10.1017/cjn.2019.315.
16. Canadian Patient Cost Database Technical Document: MIS Patient Costing Methodology, January 2019: 56.
17. Guidelines for the economic evaluation of Health Technologies: Canada, 4th ed. Ottawa: CADTH; 2017 Mar.
18. Bamford J, Sandercock P, Dennis M, Burn J, Warlow C. A prospective study of acute cerebrovascular disease in the community: the Oxfordshire Community Stroke Project—1981–86. 2. Incidence, case fatality rates and overall outcome at one year of cerebral infarction, primary intracerebral and subarachnoid haemorrhage. *J Neurol Neurosurg Psychiatry.* 1990;53(1):16–22. <https://www.ncbi.nlm.nih.gov/pmc/articles/PMC1014091/>; accessed February 12, 2019.
19. Sassi F. Calculating QALYs, comparing QALY and DALY calculations. *Health Policy Plan.* 2006;21(5):402–8. doi: 10.1093/heapol/czl018
20. Heart and Stroke foundation, Canada. *Lives Disrupted: The Impact of Stroke on Women.* 2018:24. <https://www.heartandstroke.ca/-/media/pdf-files/canada/stroke-report/strokereport2018.ashx?la=en>.
21. The cost of long-term care: Canada's retirement savings blind spot: Canada: HOOP, Feb 2018. [https://hoopp.com/docs/default-source/about-hoopp-library/advocacy/retirementsecurity-longtermcare-feb2018.pdf?sfvrsn=397a7d47\\_2](https://hoopp.com/docs/default-source/about-hoopp-library/advocacy/retirementsecurity-longtermcare-feb2018.pdf?sfvrsn=397a7d47_2); accessed December 11, 2018.
22. Bamford J, Sandercock P, Dennis M, Burn J, Warlow C. Classification and natural history of clinically identifiable subtypes of cerebral infarction. *Lancet Lond Engl.* 1991;337(8756):1521–6.
23. Busso M, DiNardo J, McCrary J. New evidence on the finite sample properties of propensity score reweighting and matching estimators. *Rev Econ Stat.* 2014;96(5):885–97. doi: 10.1162/REST\_a\_00431
24. Austin PC. An introduction to propensity score methods for reducing the effects of confounding in observational studies. *Multivar Behav Res.* 2011;46(3):399–424. doi: 10.1080/00273171.2011.568786
25. Tan Z. Bounded, efficient and doubly robust estimation with inverse weighting. *Biometrika.* 2010;97(3):661–82. <https://www.jstor.org/stable/25734115>; accessed December 17, 2018.
26. Rosenbaum PR, Rubin DB. The central role of the propensity score in observational studies for causal effects. *Biometrika.* 1983;70(1):41–55. doi: 10.2307/2335942
27. Hong K-S, Saver JL. Quantifying the value of stroke disability outcomes: WHO global burden of disease project disability weights for each level of the modified Rankin Scale. *Stroke.* 2009;40(12):3828–33. doi: 10.1161/STROKEAHA.109.561365
28. Gray AM, Clarke P, Wolstenholme J, Wordsworth S. Applied Methods of Cost-effectiveness Analysis in Healthcare — Health Economics Research Centre. 2011. <https://www.herc.ox.ac.uk/downloads/applied-methods-of-cost-effectiveness-analysis-in-healthcare>; accessed October 18, 2018.
29. Fieller, EC. The biological standardization of insulin. *Suppl J R Statist Soc.* 1940;7:1–64.
30. Health Quality Ontario. Mechanical thrombectomy in patients with acute ischemic stroke: a health technology assessment. *Ont Health Technol Assess Ser [Internet].* 2016 February;16(4):1–79. Available from: <http://www.hqontario.ca/evidence/publications-and-ohtac-recommendations/ontario-health-technology-assessment-series/hta-mechanical-thrombectomyPortals/0/Documents/evidence/reports/hta-mechanical-thrombectomy-1602-en.pdf>; accessed December 18, 2018.