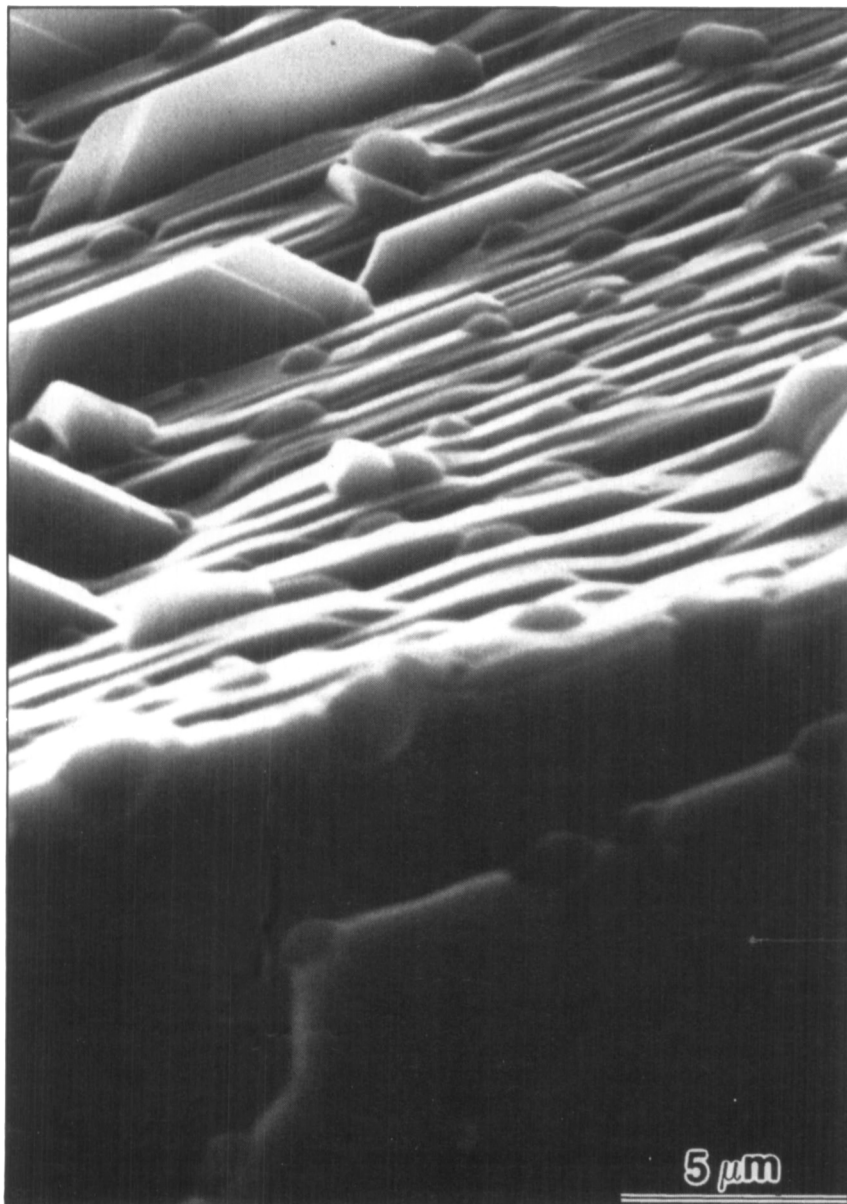


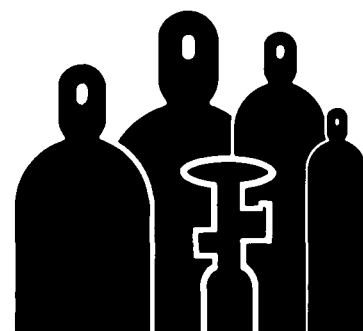
Figures appearing in the EDITOR'S CHOICE are those arising from materials research which strike the editor's fancy as being aesthetically appealing and eye-catching. No further criteria are applied and none should be assumed. When taken out of context, such figures often evoke images beyond and unrelated to the original meaning. Submissions of candidate figures are welcome and should include a complete source citation, a photocopy of the report in which it appears (or will appear), and a reproduction-quality original drawing or photograph of the figure in question.



The figure is a scanning electron micrograph of a single crystal of $\text{Bi}_2\text{Sr}_2\text{CaCu}_3\text{O}_x$, one of the new high temperature ceramic superconductor materials. It appeared in a paper by D. Shi, M. Tang, Y.C. Chang, P.Z. Jiang, K. Vandervoort, B. Malecki, and D.J. Lam (*Appl. Phys. Lett.* **54**, 1989, p. 2358). The highly anisotropic crystal structure of this orthorhombic compound accounts for the faster growth in the basal (a,b) plane than in the c-axis direction and for the layered appearance of this flux-grown crystal. This morphology is made more evident by the faceted hillocks protruding from the edge of the sample. These are of particular interest to EDITOR'S CHOICE because they so closely resemble our rather tattered storage files for submissions to this department, right down to the yet-to-be-labeled index tabs.

Voltaix

CVD GASES



DISILANE

Highest Purity
Available, Anywhere
(>1500 ohm-cm)

Quality Control

◆ 100% GC / MS analysis

Packaging Options

- ◆ Any quantity, same spec.
- ◆ Steel, polished steel or aluminum cylinders
- ◆ Pneumatic valves for fail-safe gas supply
- ◆ Optional flow restrictor for added safety
- ◆ "Keyed" VCR outlet for UHV connection to system

Also of Interest

- ◆ Diborane
- ◆ Trimethylboron
- ◆ Germane
- ◆ Digermane
- ◆ All mixtures

Voltaix, Inc.

P.O. Box 5357, 197 Meister Ave.
N. Branch, New Jersey 08876
Telephone: (201) 231-9060
Telex: 9102500134 VoltaixUQ