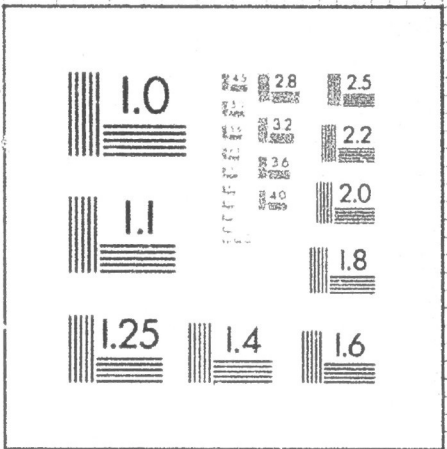


10 PT. ABCDEFGHIJKLMNOPQRSTUVWXYZ  
 abcdefghijklmnopqrstuvwxyz  
 1234567890

8 PT. ABCDEFGHIJKLMNOPQRSTUVWXYZ  
 abcdefghijklmnopqrstuvwxyz1234567890

6 PT. ABCDEFGHIJKLMNOPQRSTUVWXYZ  
 abcdefghijklmnopqrstuvwxyz1234567890

4 PT. ABCDEFGHIJKLMNOPQRSTUVWXYZ  
 abcdefghijklmnopqrstuvwxyz1234567890



2.5 lp/mm

100mm

10 PT. ABCDEFGHIJKLMNOPQRSTUVWXYZ  
 abcdefghijklmnopqrstuvwxyz  
 1234567890

8 PT. ABCDEFGHIJKLMNOPQRSTUVWXYZ  
 abcdefghijklmnopqrstuvwxyz1234567890

6 PT. ABCDEFGHIJKLMNOPQRSTUVWXYZ  
 abcdefghijklmnopqrstuvwxyz1234567890

4 PT. ABCDEFGHIJKLMNOPQRSTUVWXYZ  
 abcdefghijklmnopqrstuvwxyz1234567890

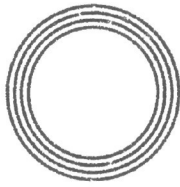
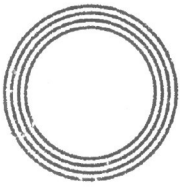
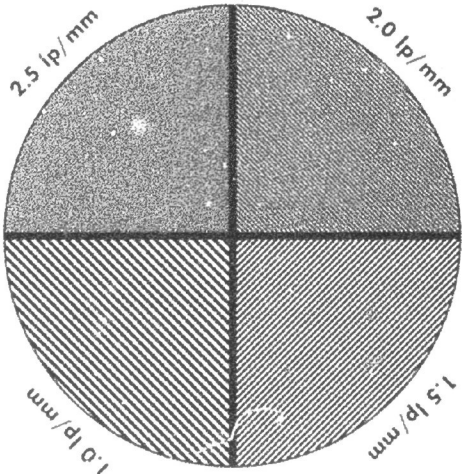
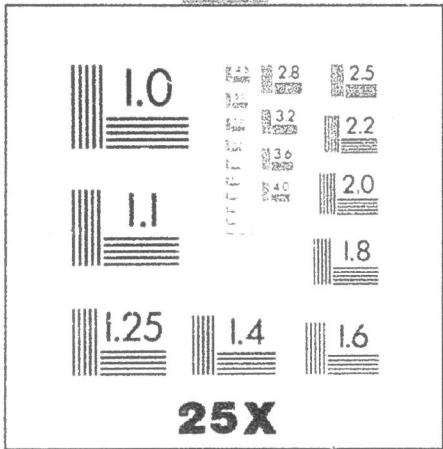
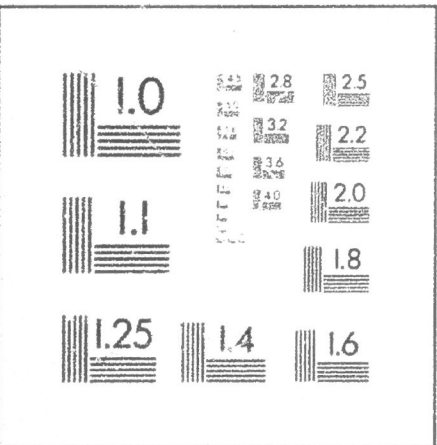


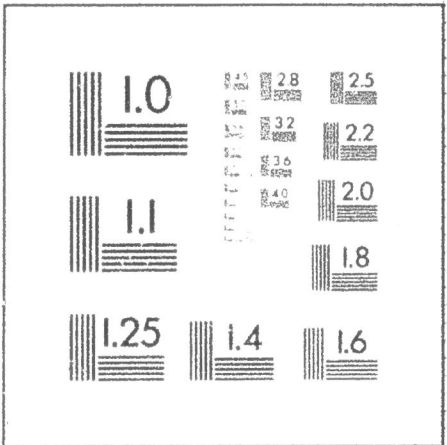
IMAGE SYSTEM  
 TEST TARGET  
 U.S. DEPARTMENT OF COMMERCE  
 PATENT AND TRADEMARK OFFICE



10 PT. ABCDEFGHIJKLMNOPQRSTUVWXYZ  
 abcdefghijklmnopqrstuvwxyz  
 1234567890

8 PT. ABCDEFGHIJKLMNOPQRSTUVWXYZ  
 abcdefghijklmnopqrstuvwxyz1234567890

6 PT. ABCDEFGHIJKLMNOPQRSTUVWXYZ  
 abcdefghijklmnopqrstuvwxyz1234567890



# **The Collfryn hillslope enclosure, Llansantffraid Deuddwr, Powys: excavations 1980-1982**

*by William Britnell*

**MICROFICHE SUPPLEMENT**

**PROCEEDINGS OF THE PREHISTORIC SOCIETY 55, 1989**

## CONTENTS OF MICROFICHE SUPPLEMENT

### SECTION 1: DETAILS OF STRUCTURES

1.1	Gates	1
1.2	Roundhouses	4
1.3	Post structures	11
1.4	Clay oven associated with Post-structure 31	20
1.5	Medieval and post-Medieval activity: discussion	21

### SECTION 2: ARTEFACTS AND TECHNOLOGICAL MATERIALS

2.1	Introduction	23
2.2	Ceramic groupings, by William and Jenny Britnell	24
2.3	Beaker pottery, by Dr T. C. Darvill	26
2.4	Salt containers, by William Britnell	29
2.5	Petrological analysis of the Iron Age and early Romano-British native pottery, by Dr Elaine L. Morris	32
2.6	Romano-British coarse pottery, by Dr Stephen Greep	37
2.7	The Samian pottery, by Peter V. Webster	45
2.8	Metallurgical debris, by Dr Hilary Howard	48
2.9	A bronze linchpin head and mini-terret, by Dr Mansel G. Spratling	54
2.10	The Roman brooches, by Janet Webster	56
2.11	Lead spindlewhorls	58
2.12	Flintwork, by Elizabeth Healey	59
2.13	Examination and petrological analysis of a possible axe fragment, by C. H. Houlder and Dr C. W. Phillips	60

### SECTION 3: ANALYSES AND SCHEDULES OF ORGANIC MATERIALS AND SOILS

3.1	Introduction	
3.2	Radiocarbon dating, by Dr P. Q. Dresser	61
3.3	Charcoal identifications, by Graham C. Morgan	62
3.4	Wood identifications, by Graham C. Morgan	66
3.5	Iron Age, Romano-British and Medieval plant remains, by Dr Glynis Jones and Annie Milles	72
3.6	Animal Bones, by Gillain Jones	74
3.7	A buried soil profile at Collfryn, by Dr Helen C. M. Keeley	85
		90

**LIST OF FIGURES IN MICROFICHE SUPPLEMENT****SECTION 2.6: ROMANO-BRITISH COARSE POTTERY**

Figure 39. Romano-British Pottery

Figure 40. Romano-British Pottery

Figure 41. Romano-British Pottery

42

43

44

**SECTION 2.8: METALLURGICAL DEBRIS**

Figure 42. Crucible matrix density

Figure 43. Grain size distribution

53

53

**SECTION 2.11: LEAD SPINDLEWHORLS**

Figure 44. Lead spindlewhorls

58

**SECTION 3.7: A BURIED SOIL PROFILE AT COLLFRYN**

Figure 45. Sketch section of bank and buried soil profile

Figure 46. Loss on ignition with depth through soil profile

90

91