

Figure 1. Clearance of 5% sodium chloride solution aerosol particles (1–10 µm in diameter) in patient rooms with the door open versus closed during periods when the heating, ventilation, and air conditioning (HVAC) system was off for maintenance versus on. During episode 1, the air handler was able to vent some recirculated air to the outside. Average results for 3 rooms for each test condition are shown. Error bars represent standard error.

Supplementary material. To view supplementary material for this article, please visit <https://doi.org/10.1017/ice.2023.166>

Acknowledgments. We thank the Cleveland VA Engineering Department for helpful discussions.


Financial support. This work was supported by the Department of Veterans' Affairs.

Competing interests. C.J.D. has received research grants from Clorox, Pfizer, and Ecolab. All other authors report no conflicts of interest relevant to this article.

References

- Improving ventilation in buildings. Centers for Disease Control and Prevention website. <https://www.cdc.gov/coronavirus/2019-ncov/prevent-getting-sick/improving-ventilation-in-buildings.html>. Accessed May 22, 2023.
- Ha W, Zabarsky TF, Eckstein EC, *et al*. Use of carbon dioxide measurements to assess ventilation in an acute-care hospital. *Am J Infect Control* 2022;50:229–232.
- Background C. Air: Guidelines for environmental infection control in healthcare facilities. Centers for Disease Control and Prevention website. <https://www.cdc.gov/infectioncontrol/guidelines/environmental/background/air.html>. Accessed May 16, 2023.
- Cadnum JL, Donskey CJ. If you can't measure it, you can't improve it: Practical tools to assess ventilation and airflow patterns to reduce the risk for transmission of severe acute respiratory syndrome coronavirus 2 and other airborne pathogens. *Infect Control Hosp Epidemiol* 2022;43:915–917.
- Ha W, Stiefel MA, Gries JR, *et al*. Evaluation of interventions to improve ventilation in households to reduce risk for transmission of severe acute respiratory syndrome coronavirus 2. *Pathog Immun* 2022;7:120–130.
- Cadnum JL, Jencson AL, Alhmidi H, Zabarsky TF, Donskey CJ. Airflow patterns in double-occupancy patient rooms may contribute to roommate-to-roommate transmission of severe acute respiratory syndrome coronavirus 2. *Clin Infect Dis* 2022;75:2128–2134.
- Haq MF, Cadnum JL, Carlisle M, Hecker MT, Donskey CJ. SARS in cars: carbon dioxide levels provide a simple means to assess ventilation in motor vehicles. *Pathog Immun* 2022;7:19–30.

Discordant antimicrobial susceptibility and polymerase chain reaction (PCR) testing in a *Klebsiella pneumoniae* isolate with a carbapenemase gene

Lucy S. Witt MD, MPH^{1,2} , Alex Page BS^{1,2}, Eileen M. Burd PhD^{1,3,4}, Tugba Ozturk MS⁴, David S. Weiss PhD^{1,4}, Susan M. Ray MD^{1,2}, Sarah Satola PhD^{1,2,3,4} and Lindsey B. Gottlieb MD¹

¹Division of Infectious Diseases, Emory University School of Medicine, Atlanta, Georgia, ²Georgia Emerging Infections Program, Atlanta Veterans' Affairs Medical Center, Decatur, Georgia, ³Department of Pathology and Laboratory Medicine, Emory University School of Medicine, Atlanta, Georgia and ⁴Emory Antibiotic Resistance Center, Atlanta, Georgia

Author for correspondence: Lucy S. Witt, MD, MPH, Emory University Hospital, 550 Peachtree St NE, 7th Floor, Medical Office Tower, Atlanta, GA 30308. E-mail: lwitt@emory.edu

Cite this article: Witt LS, *et al*. (2023). Discordant antimicrobial susceptibility and polymerase chain reaction (PCR) testing in a *Klebsiella pneumoniae* isolate with a carbapenemase gene. *Infection Control & Hospital Epidemiology*, 44: 2100–2102. <https://doi.org/10.1017/ice.2023.176>

To the Editor—Rapid blood-culture identification techniques are increasingly common in hospitals across the United States. Rapid diagnostics can quickly identify resistance genes in bacteria that may otherwise have taken days to be identified, thus shortening the time until patients are placed on the appropriate

transmission-based precautions and antimicrobial treatment. Because shortened time to appropriate therapy has been linked to improved mortality, this change has critical implications for patient care.¹ Although numerous studies have described early identification of resistance genes that are later confirmed by traditional antimicrobial susceptibility testing (AST), few have reported cases of gram-negative bacteria with resistance genes identified by rapid tests but with AST showing antibiotic susceptibility. We present a case of a patient with a *Klebsiella pneumoniae* carbapenemase (KPC) gene identified by the ePlex Blood Culture Identification (BCID) panel (GenMark, Carlsbad, CA) whose subsequent AST showed susceptibility to carbapenems.

A man aged in his thirties with a medical history of necrotizing pancreatitis and type 2 diabetes mellitus was admitted to the intensive care unit for abdominal pain and diabetic ketoacidosis. Blood cultures collected on admission became positive 12 hours later for gram-negative rods. A known abdominal fluid collection was postulated as the source of his bacteremia. BCID detected *Klebsiella pneumoniae* and a KPC gene, and the patient was placed on contact precautions. Subsequent AST using the Vitek2 GN74 card (bioMérieux, Durham, NC) showed *Klebsiella pneumoniae* with susceptibility to meropenem (minimum inhibitory concentration [MIC] ≤ 0.25 $\mu\text{g/mL}$) and ertapenem (MIC ≤ 0.5 $\mu\text{g/mL}$) (Supplementary Table 1 online). Given this discrepancy, the isolate was sent to our investigational clinical microbiology core, where testing by Carba NP (performed according to guidelines²) showed carbapenemase activity. Gradient diffusion testing revealed a main population of bacteria susceptible to meropenem; however, satellite colonies were noted within the zone of inhibition (Fig. 1). Further testing in a research laboratory showed heteroresistance to meropenem. The patient was transitioned to ceftazidime-avibactam, and his blood cultures cleared within 48 hours.

This phenomenon (presence of resistance genes on PCR, and antibiotic susceptibility on AST) has been well documented in *Staphylococcus* and other gram-positive species.³ Suggested mechanisms for this include empty *mec* cassettes or multiple populations of bacteria yielding conflicting results. Few prior studies have mentioned similar discrepancies in Enterobacterales.⁴⁻⁷ Bratu et al.⁵ described a multihospital outbreak of carbapenem-resistant Enterobacterales (CRE) in which many isolates appeared susceptible to imipenem (despite possessing KPC genes) when a lower inoculum was used during standard broth microdilution testing.⁵ Other studies suggest that when using more modern AST techniques, an unexpressed carbapenemase gene may lead to apparent susceptibility on standard AST despite presence of the resistance gene.^{4,6} Our findings suggest that heteroresistance, whereby an established subpopulation of resistant bacteria proliferates under antibiotic pressure, may also play a role in these discrepant results.

The Centers for Disease Control and Prevention (CDC) recommends that healthcare workers use gowns and gloves when caring for patients with CRE and that these patients be placed in single-bed rooms when available (ie, contact precautions). Prior to instituting BCID, this patient would not have been identified as harboring CRE and would not have been placed under contact precautions. Surveillance for CRE in cultures, along with isolating and placing patients with CRE under contact precautions, have been shown to reduce the transmission of this class of organisms.^{8,9} Our findings suggest that relying solely on AST to guide isolation decisions may miss some carbapenemase-producing CRE, potentially increasing the chance of undetected patient-to-patient transmission. As rapid diagnostics have become more prevalent, more discrepancies between gene detection and AST will be identified.

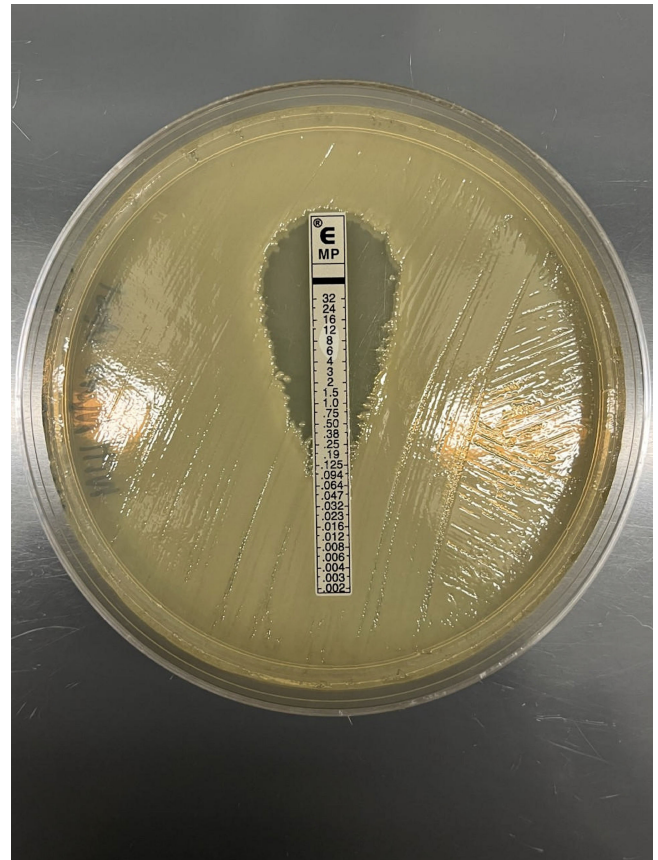


Figure 1. Gradient diffusion susceptibility test of meropenem showing colonies within the zone of inhibition.

Further analysis should be undertaken to determine the transmission risk of unexpressed carbapenemase genes and their implications for infection control and prevention.

Supplementary material. To view supplementary material for this article, please visit <https://doi.org/10.1017/ice.2023.176>

Acknowledgments.

Financial support. D.S.W. is supported by a Burroughs Wellcome Fund Investigators in the Pathogenesis of Infectious Diseases award. This work was supported by the National Institutes for Health (NIH grant no. AI158080). This study was supported in part by the Investigational Clinical Microbiology Core (ICMC), which was supported by the Division of Infectious Diseases, Department of Medicine, Emory University School of Medicine.


Conflict of interest. All authors report no conflicts of interest relevant to this article.

References

- Falcone M, Bassetti M, Tiseo G, et al. Time to appropriate antibiotic therapy is a predictor of outcome in patients with bloodstream infection caused by KPC-producing *Klebsiella pneumoniae*. *Crit Care* 2020;24:29.
- Clinical and Laboratory Standards Institute CLSI. *M100-S31, Performance Standards for Antimicrobial Susceptibility Testing*, 33rd Edition. Informational supplement. Malvern, PA: CLSI, 2023.
- Huang TD, Melnik E, Bogaerts P, Evrard S, Glupczynski Y. Evaluation of the ePlex Blood Culture Identification panels for detection of pathogens in bloodstream infections. *J Clin Microbiol* 2019;57: e01597–18.

4. Tansarli GS, Chapin KC. A closer look at the laboratory impact of utilizing ePlex Blood Culture Identification panels: a workflow analysis using rapid molecular detection for positive blood cultures. *Microbiol Spectr* 10:e01796–22.
5. Bratu S, Mooty M, Nichani S, et al. Emergence of KPC-possessing *Klebsiella pneumoniae* in Brooklyn, New York: epidemiology and recommendations for detection. *Antimicrob Agents Chemother* 2005;49:3018–3020.
6. Emira AS, Madkour LAEF, Seif NE, Dwedar RA. Expressed and silent carbapenemase genes detected by multiplex PCR in both carbapenem-resistant and phenotypically susceptible gram-negative bacilli. *Alexandria J Med* 2020;56:181–188.
7. Marshall J, Tibbetts RJ, Dunne WM, Frye JG, Fraser VJ, Warren DK. Presence of the KPC carbapenemase gene in Enterobacteriaceae causing bacteremia and its correlation with in vitro carbapenem susceptibility. *J Clin Microbiol* 2009;47:239–241.
8. Tomczyk S, Zanichelli V, Grayson ML, et al. Control of carbapenem-resistant Enterobacteriaceae, *Acinetobacter baumannii*, and *Pseudomonas aeruginosa* in healthcare facilities: a systematic review and reanalysis of quasi-experimental studies. *Clin Infect Dis* 2019;68:873–884.
9. Ben-David D, Masarwa S, Fallach N, et al. Success of a national intervention in controlling carbapenem-resistant Enterobacteriaceae in Israel's long-term care facilities. *Clin Infect Dis* 2019;68:964–971.

Viable mpox in the inanimate environmental and risk of transmission

Leonard A. Mermel DO, ScM, AM (Hon), FSHEA, FIDSA, FACP^{1,2} 

¹Department of Medicine, Warren Alpert Medical School of Brown University, Providence, Rhode Island and ²Department of Epidemiology & Infection Prevention, Lifespan Hospital System, Providence, Rhode Island

As of August 23, 2023, 30,767 mpox cases have been reported in the United States (<https://www.cdc.gov/poxvirus/mpox/response/2022/index.html>). Although mpox is primarily transmitted through contact with an infected individual, recent investigations have demonstrated potential mpox transmission from patients to healthcare workers after contact with contaminated bedding¹ or other fomites.² In support of such findings, viable mpox virus has been detected on various surfaces in home and hospital settings of infected individuals (Table 1).^{3–8} One quantitative study of viable mpox virus in a residential setting found the highest level on underwear.³ Viable mpox has been detected on household surfaces for up to 15 days, but at low titers suggesting a lesser potential for transmission.³ Mpox survival in the environment is highly dependent on surrounding temperature and humidity,⁹ as well as the porosity of a contaminated object.³ When mpox mixed with blood or albumin was inoculated on stainless steel at 37°C, no viable mpox could be recovered after 6 and 7 days, respectively, 10 and 11 days, respectively at 22°C, but up to 30 days at 4°C for mpox mixed with either blood or albumin.⁹

Based on the data reviewed above, healthcare workers should follow guidance regarding personal protective equipment upon entering the immediate environment of a patient with known or suspected mpox, regardless of whether or not the healthcare worker intends to have direct contact with the patient.¹⁰ In addition, emphasis should also be placed on careful removal of personal protective equipment to prevent self-contamination while doffing and practicing hand hygiene thereafter. Lastly, cleaning environmental surfaces in the rooms of such patients should be done using products with mpox cidal activity.^{9,10}

Table 1. Detection of Mpox on Surfaces in Home and Hospital Settings

Authors	Home	Hospital
	Viable mpox virus detected on household surfaces	Viable mpox virus detected on hospital room surfaces
Morgan et al ³	Paper towels, underwear, blanket, towel, mattress cover, tabletop	...
Atkinson et al ⁴	Mattress and sheet, towel, iPad, door handle, sink tap, duvet, sofa, hall light switch	...
Pfeiffer et al ⁵	...	No viable virus detected
Nörz et al ⁶	...	Soap dispenser handle, towel, glove after touching objects
Gould et al ⁷	...	Anteroom floor after PPE doffing
Marimuthu et al ⁸	...	Chair in patient room, toilet seat, linen dust

Acknowledgments.

Financial support. No financial support was provided relevant to this article.

Conflicts of interest. The author reports no conflicts of interest relevant to this article.

References

1. Vaughan A, Aarons E, Astbury J, et al. Human-to-human transmission of monkeypox virus, United Kingdom, October 2018. *Emerg Infect Dis* 2020;26:782–785.
2. Salvato RS, Rodrigues Ikeda ML, et al. Possible occupational infection of healthcare workers with monkeypox virus, Brazil. *Emerg Infect Dis* 2022;12:2520–2523.
3. Morgan CN, Whitehill F, Doty JB, et al. Environmental persistence of monkeypox virus on surfaces in household of person with travel-associated infection, Dallas, Texas, USA, 2021. *Emerg Infect Dis* 2022;28:1982–1989.

Corresponding author: Leonard A. Mermel; E-mail: lmermel@lifespan.org

Cite this article: Mermel LA. (2023). Viable mpox in the inanimate environmental and risk of transmission. *Infection Control & Hospital Epidemiology*, 44: 2102–2103, <https://doi.org/10.1017/ice.2023.149>