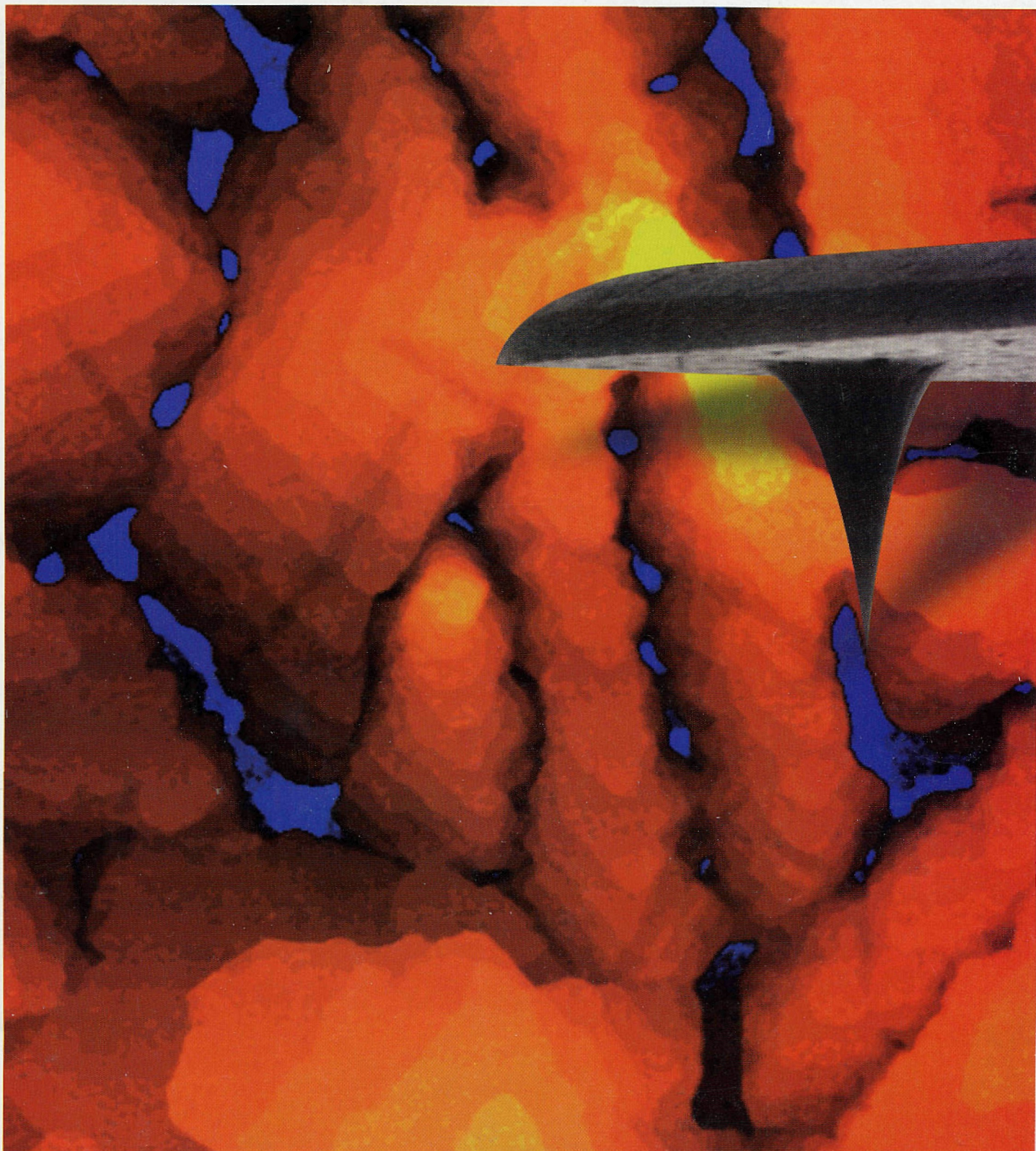


# MICROSCOPY TODAY

FEBRUARY/MARCH 2000

ISSUE #00-2

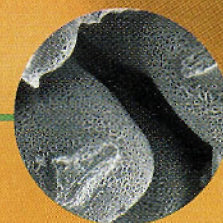
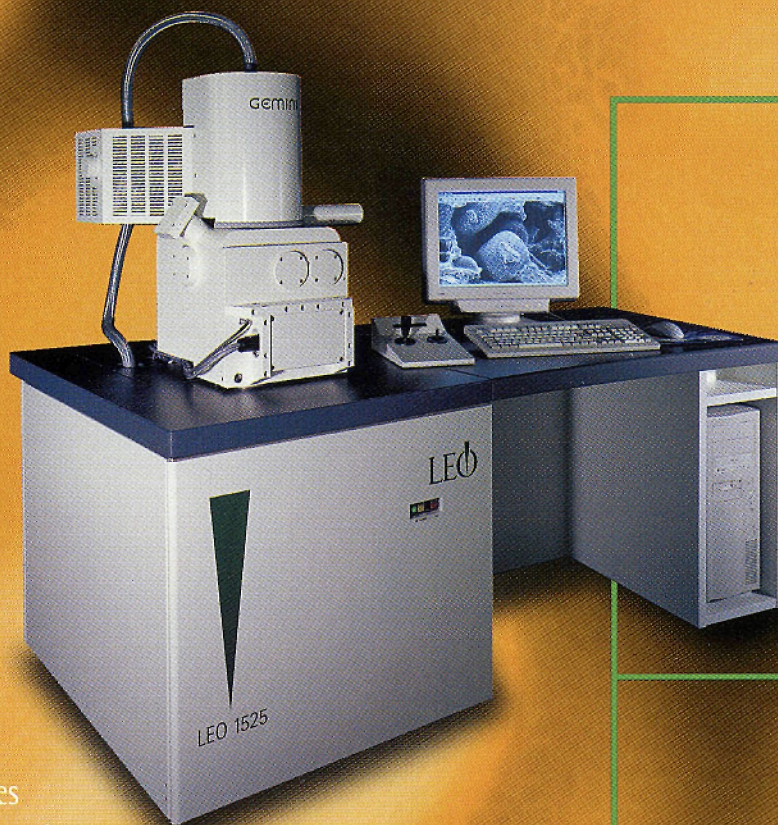


THE  
LEO  
1525

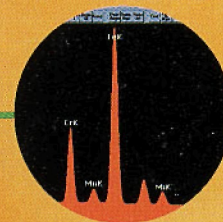
# F E S E M

## Affordable Nano-analysis

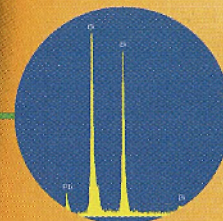
Simultaneously obtain ultra high resolution imaging and analysis affordably – that's LEO performance AND value. Featuring the GEMINI field emission column, the LEO 1525 delivers 1.5nm at 20 kV, and 3.5 nm at 1kV. The chamber uniquely accommodates EDS, EBSD and fully-focusing WDS spectrometers as well as a range of other detectors. For the ultimate in affordable nano-analysis, the LEO 1525 is unequalled.



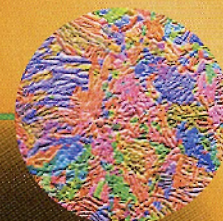
In-lens SE



EDS



WDS



EBSD

Contact  
the LEO office  
nearest to you

LEO Electron Microscopy Worldwide:

USA: New York Tel (1) 914 747 7700 Fax (1) 914 681 7443 E-mail [info@leo-usa.com](mailto:info@leo-usa.com)

UK: Cambridge Tel (44) 1223 414166 Fax (44) 1223 412776 E-mail [info@leo-em.co.uk](mailto:info@leo-em.co.uk)

Germany: Oberkochen Tel (49) 73 64 94 6137 Fax (49) 73 64 94 4851 E-mail [info@leo.de](mailto:info@leo.de)

France: Rueil-Malmaison Tel (33) 1 41 39 92 10 Fax (33) 1 41 39 92 29 E-mail [leo\\_microscopie@compuserve.com](mailto:leo_microscopie@compuserve.com)

Scandinavia: Sweden Tel (46) 158 13090 Fax (46) 158 13095 E-mail [michael.andersson@leo-em.d.se](mailto:michael.andersson@leo-em.d.se)

India: Tel (91) 115723240 Fax (91) 11 5764181 E-mail [leoindia@giasdlo1.vsnl.net.in](mailto:leoindia@giasdlo1.vsnl.net.in)

Plus a worldwide network of dealers

Website: [www.leo-usa.com](http://www.leo-usa.com)

LEO  
*The power to resolve*