

Erratum

Cite this article: Machakaire ATB, Steyn JM, Franke AC (2023). Photosynthesis rate, radiation and water use efficiencies of irrigated potato in a semi-arid climate using Eddy covariance techniques – ERRATUM. *The Journal of Agricultural Science* **161**, 464–468. <https://doi.org/10.1017/S0021859623000229>

First published online: 6 April 2023

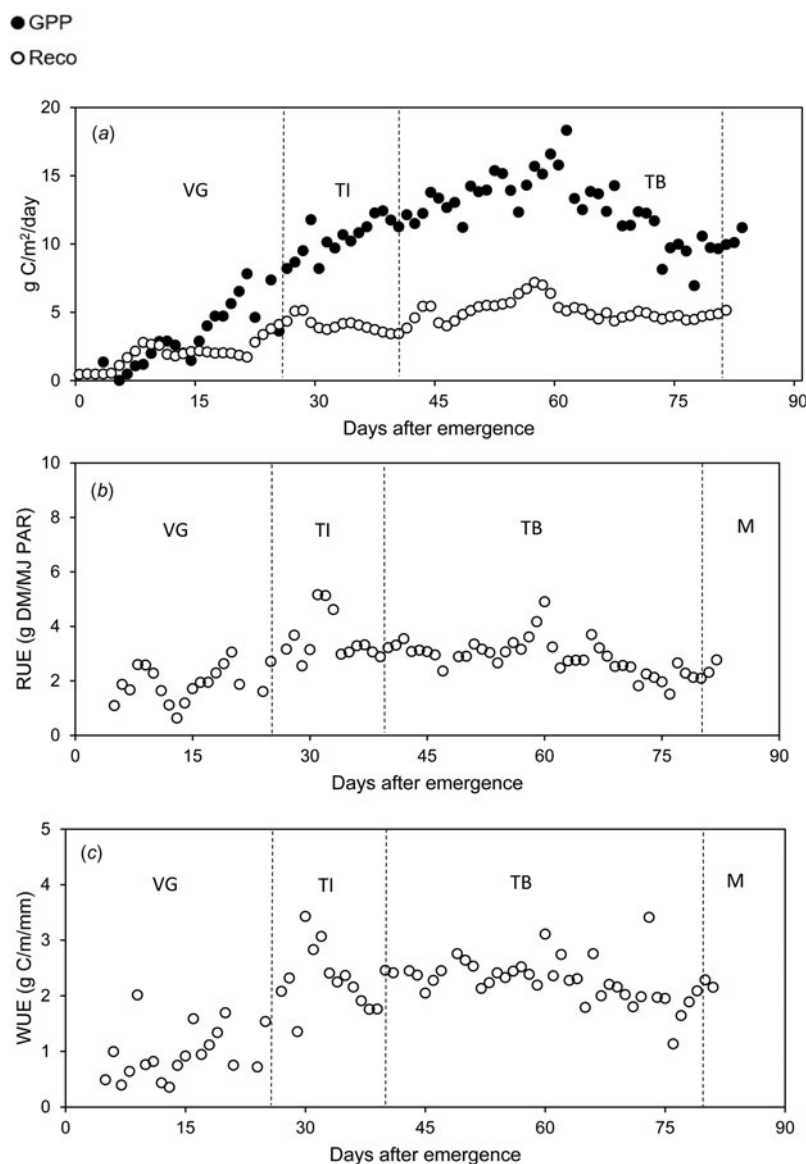
Photosynthesis rate, radiation and water use efficiencies of irrigated potato in a semi-arid climate using Eddy covariance techniques – ERRATUM

A. T. B. Machakaire^{1,2}, J. M. Steyn³ and A. C. Franke¹

¹Department of Soil, Crop and Climate Sciences, University of the Free State, Private Bag 339, Bloemfontein 9300, South Africa; ²Department of Agronomy, McCain Foods SA, PO Box 1023, Delmas 2210, South Africa and ³Department of Plant and Soil Sciences, University of Pretoria, Private Bag X20, Hatfield 0028, South Africa

DOI: <https://doi.org/10.1017/S0021859623000175>, Published online by Cambridge University Press: 22 February 2023.

The published paper contained errors with regards to the placement and numbering of Figures 2–6. The correct Figure and legend combinations are shown below.



© The Author(s), 2023. Published by Cambridge University Press. This is an Open Access article, distributed under the terms of the Creative Commons Attribution licence (<https://creativecommons.org/licenses/by/4.0/>), which permits unrestricted re-use, distribution, and reproduction in any medium, provided the original work is properly cited.



Fig. 2. Seasonal pattern of daily ecosystem respiration (Reco) and gross primary production (GPP) (a), radiation use efficiency (RUE) (b) and water use efficiency (WUE) (c) at Louwna (VG – vegetative growth, TI – tuber initiation, TB – tuber bulking and M – maturation, DM – dry matter, C – carbon, PAR – photosynthetic active radiation).



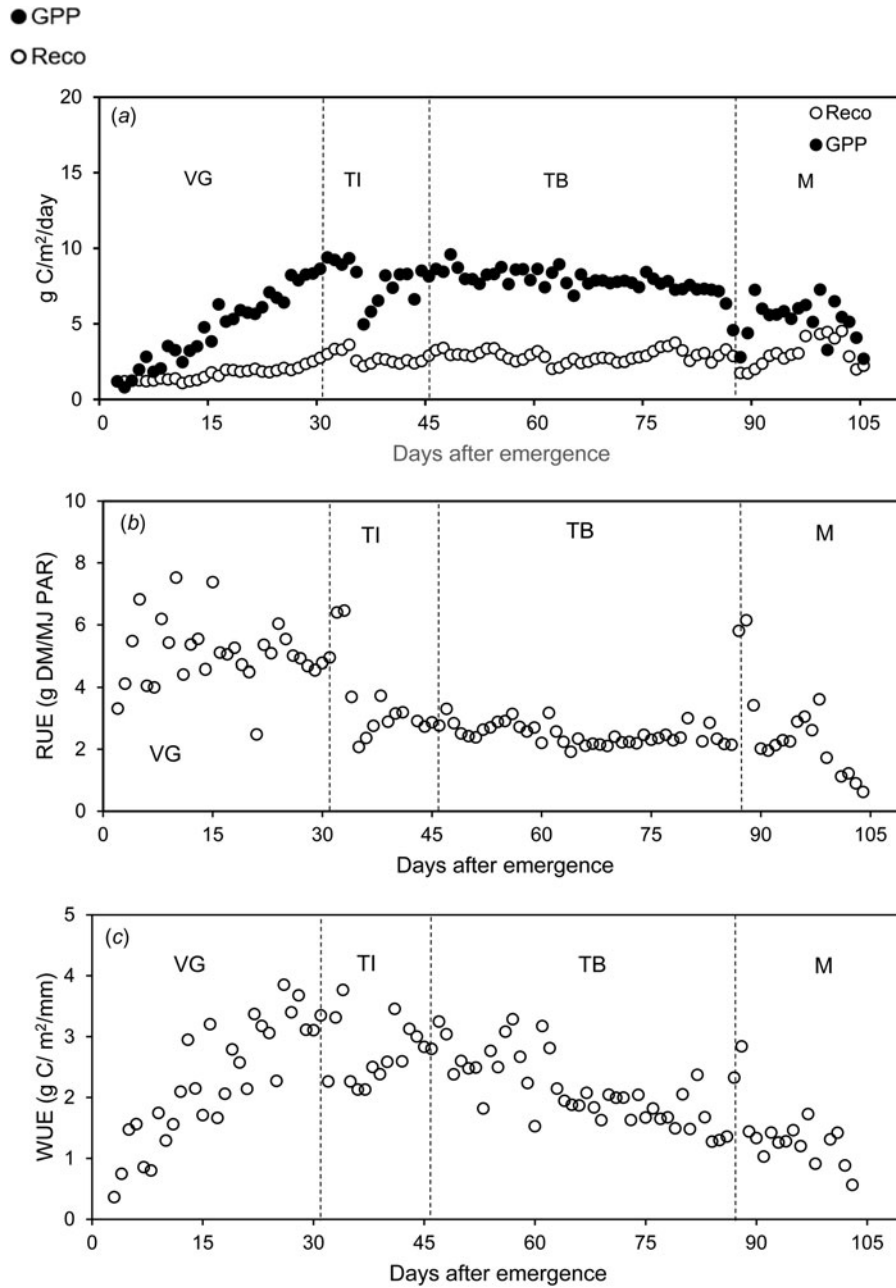


Fig. 3. Seasonal pattern of daily ecosystem respiration (Reco) and gross primary production (GPP) (a), radiation use efficiency (RUE) (b) and water use efficiency (WUE) (c) at Tom Burke (VG – vegetative growth, TI – tuber initiation, TB – tuber bulking and M – maturation, DM – dry matter, C – carbon, PAR – photosynthetic active radiation).

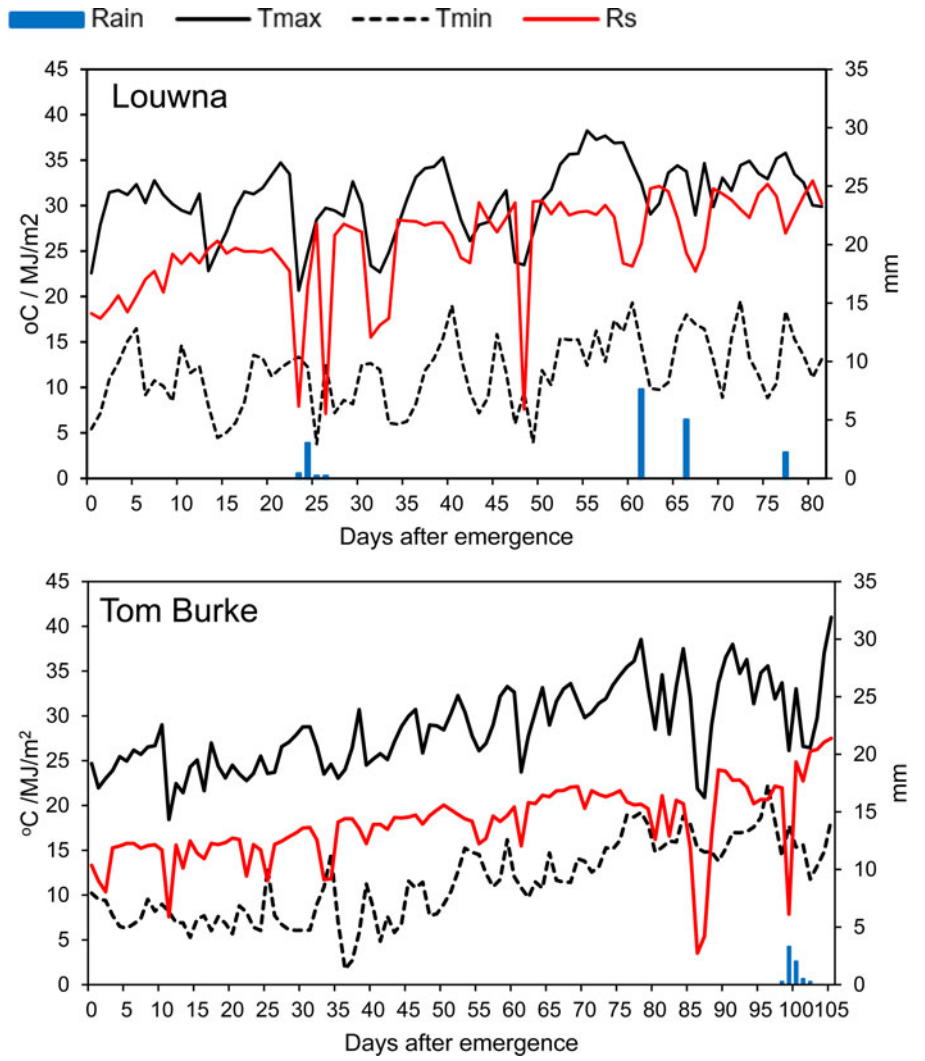


Fig. 4. Daily rainfall (mm), maximum temperature (Tmax), minimum temperature (Tmin) (°C), and daily total solar radiation (Rs) (MJ/m²) from planting to harvest at Louwna and Tom Burke.

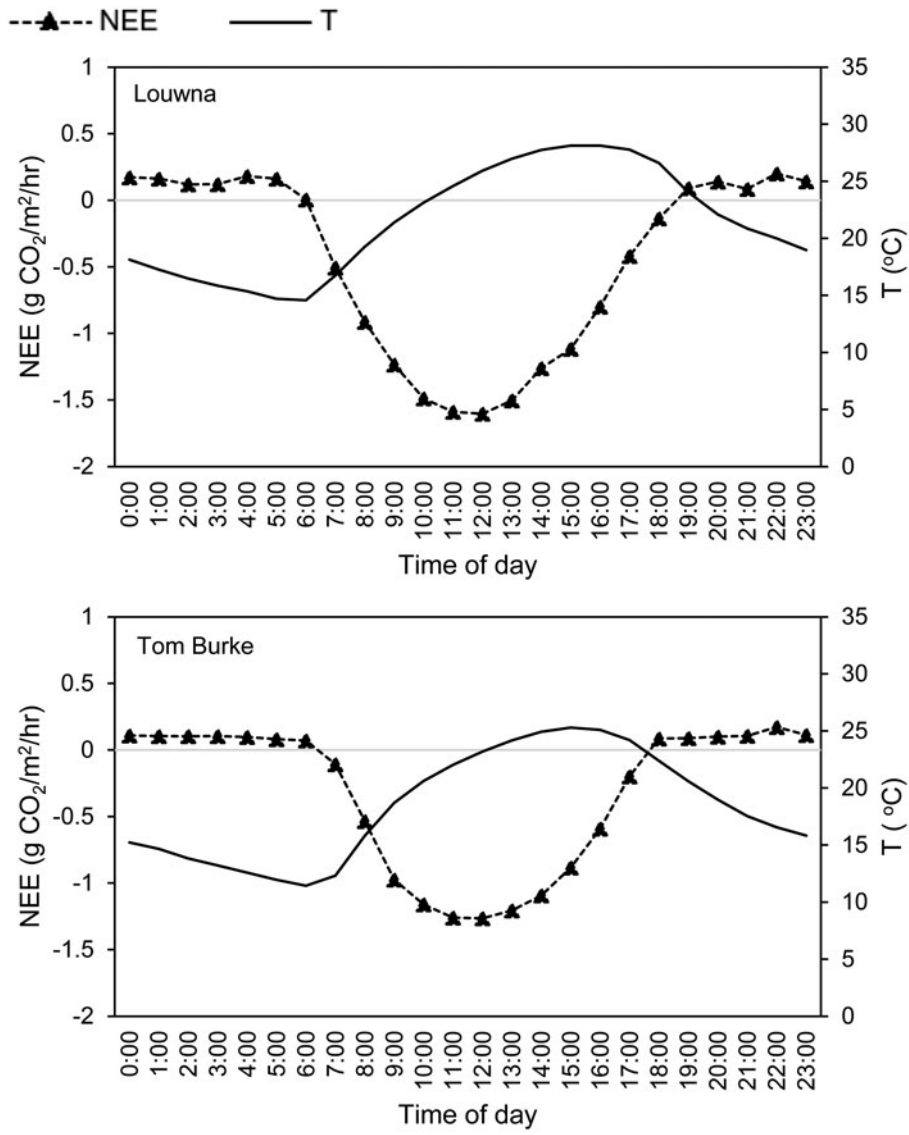


Fig. 5. Seasonal mean diurnal variation in net ecosystem exchange flux (NEE) and ambient temperature (T).

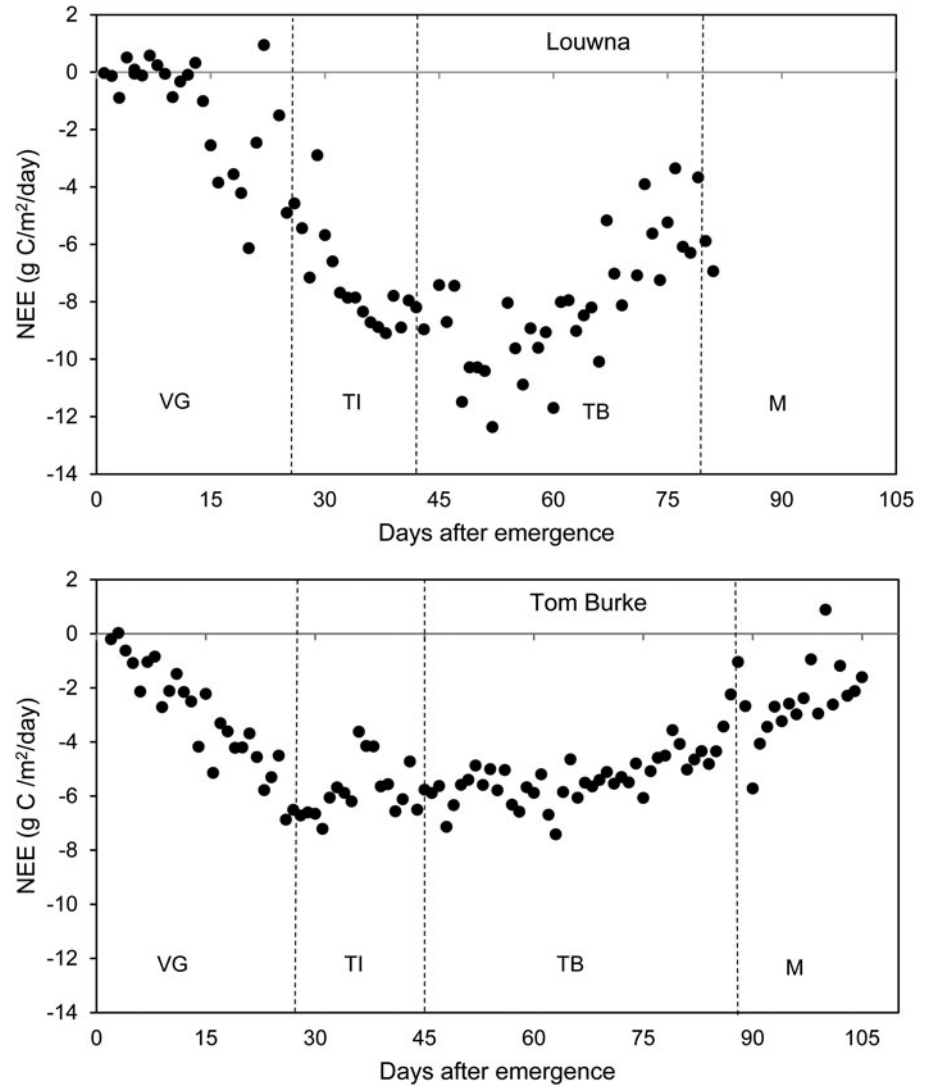


Fig. 6. Daily net ecosystem exchange flux (NEE) in different growth phases of potato (VG – vegetative growth, TI – tuber initiation, TB – tuber bulking and M – maturation) from crop emergence to crop end.

Reference

Machakaire ATB, Steyn JM and Franke AC (2023) Photosynthesis rate, radiation and water use efficiencies of irrigated potato in a semi-arid climate

using Eddy covariance techniques. *Journal of Agricultural Science, Cambridge* DOI: <https://doi.org/10.1017/S0021859623000175>.