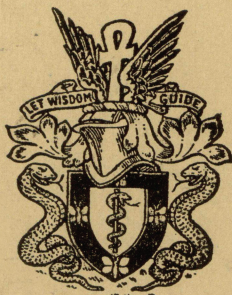


THE JOURNAL

OF

MENTAL SCIENCE

(THE BRITISH JOURNAL OF PSYCHIATRY)



BY AUTHORITY OF
THE ROYAL MEDICO-PSYCHOLOGICAL ASSOCIATION

EDITOR-IN-CHIEF
G. W. T. H. FLEMING

WITH THE ASSISTANCE OF
Alexander Walk (Co-Editor)

L. C. Cook	F. L. Golla	T. F. Main
P. K. McCowan	A. Meyer	R. M. Norman
M. Partridge	W. Linford Rees	B. W. Richards
	W. Warren	

(The above constitute the Journal Committee)

AND

Lord Adrian	C. J. C. Earl
W. Ross Ashby	J. N. P. Moore
Sir F. C. Bartlet	A. A. W. Petrie
Sir W. E. le Gros Clark	Derek Richter
S. M. Coleman	E. T. O. Slater

LONDON
J. & A. CHURCHILL, LTD

Published Four times Yearly Fifteen Shillings net

THE JOURNAL OF MENTAL SCIENCE

Communications on general editorial matters, including MSS. for publication, books for review and other printed matter, and communications regarding the *Epitome* section, including journals to be abstracted, should be sent to the Editor-in-Chief, Barnwood House, Gloucester.

Communications and enquiries regarding sales should be addressed to the Publishers, Messrs. J. & A. CHURCHILL, Ltd., 104 Gloucester Place, Portman Square, London, W.1; and those regarding Advertisements to Aldridge Press Ltd., 27 Chancery Lane, W.C.2.

Details of membership of the Royal Medico-Psychological Association are obtainable from the Secretary, R.M.P.A., 11 Chandos Street, Cavendish Square, London, W.1.

THE ROYAL MEDICO-PSYCHOLOGICAL ASSOCIATION PUBLICATIONS

From MESSRS. ADLARD & SON, LTD.,
Bartholomew Press, Dorking, Surrey.

Enquiry (History) Form, for use in Mental Hospitals. In three sizes. Prices and specimen forms on application.

From MESSRS. J. & A. CHURCHILL, LTD.,
104 Gloucester Place, W.1.

“**The Journal of Mental Science.**” Published four times a year. Price 15/-. Postage extra.

“**Recent Progress in Psychiatry.**” Vol. 2, 1950. Pp. 711. Price 50/-.

From MESSRS. BAILLIÈRE, TINDALL & COX,
8 Henrietta Street, W.C.2.

“**Handbook for Mental Nurses.**” 8th edn. 1954. Price 21/-.

“**Manual for Mental Deficiency Nurses.**” 1931. Price 6/6 net.

From THE SECRETARY, 11 Chandos Street, W.1.

The Charter and By-Laws of the Association. Price 2/- . Postage 1½d.

“**Recent Progress in Psychiatry.**” Vol. 2, 1950 (at special price to members of R.M.P.A.).



Grune & Stratton Publications

PROGRESS IN NEUROLOGY AND PSYCHIATRY, Volume XII

Edited by E. A. Spiegel, M.D.

In this 1957 volume in the series over 45 specialists present an excellent résumé and critical evaluation of the most important recent contributions in neurology and psychiatry.
660 pages. 84s. net

MANAGEMENT OF THE HANDICAPPED CHILD:

Diagnosis, Treatment and Rehabilitation

Edited by H. Michal-Smith

This volume is a continuation and extension of an earlier work edited by Dr. Michal-Smith, *Pediatric Problems in Clinical Practice*. The change in title indicates the broadened presentation of these problems to encompass the interests and duties of other professional people in the field as well as those of the pediatrician, all of whom are working toward one common goal, the successful Management of the Handicapped Child.
276 pages. 46s. net

THE PSYCHOLOGY OF WOMEN

by Helen Deutsch, M.D.

"These books not only will interest the psychiatrist, the psychologist, the physician and the students but may be read with understanding and profit by mothers and their daughters."—*Journal of the American Medical Association*.
Vol. I: Girlhood. 413 pages. 32s. net
Vol. II: Motherhood. 505 pages. 35s. net

SCHIZOPHRENIA IN PSYCHOANALYTIC OFFICE PRACTICE

by A. H. Rifkin

A new practical book, based on a recent symposium held under the auspices of the Society for Medical Psychoanalysts.
160 pages. 28s. net

EXPERIMENTAL PSYCHOPATHOLOGY, Volume XI

Edited by Hoch & Zubin

This volume presents more than 20 papers and discussions on diversified aspects of experimental psychopathology read at the 45th Annual Meeting of the Psychopathological Association of America.
275 pages. 32 charts and diagrams. 46s. net

STUDIES IN TOPECTOMY

Edited by Lewis, Landis & King

In presenting the final report of the New York State brain research project, this book gives the controlled and critical study of the effects of topectomy on schizophrenia and a comparison of the results of this operation with that of other psychosurgical procedures. It is of immediate interest to the neurologist, neuro-psychiatrist, neurosurgeon and the psychiatrist.
248 pages. Diagrams and tables. 48s. net

99 Great Russell Street, London, W.C.1

“the overall picture was a quieter ward with an increase in interest, initiative and occupational capacity.” J.MENT.SCI. (1957) 103, 610.



PACATAL

TRADE MARK

Different phenothiazine derivatives exhibit their greatest usefulness in different types of mental disorder and in different types of patient. Accumulated evidence shows that Pacatal is of particular value for:

- RECENT ACUTE SCHIZOPHRENICS
- CHRONIC SCHIZOPHRENICS
- OBSESSIVE-COMPULSIVES
- AGITATED DEPRESSIVES
- SENILE PATIENTS

and in the control of:

Aggression • Impulsiveness • Overactivity

In general, Pacatal tends to produce better results in patients over fifty than in the younger age groups and it has been observed that women often respond better than men.

A notable feature of Pacatal is that patients receiving it are not made drowsy or “flattened”. They remain alert and are thus able to co-operate in other forms of treatment.

PRESENTATION

Tablets 25 and 100 mg. in bottles of 50 and 500. Ampoules each containing 50 mg. in 2 ml. in boxes of 10 and 50.



WILLIAM R. WARNER & CO. LTD.
EASTLEIGH, HAMPSHIRE

PAC 389/26



**Remarkably safe and
free from toxic effects**

N y d r a n e

n-BENZYL- β -CHLOROPROPIONAMIDE

**in the treatment of Grand-mal
and Psychomotor Epilepsy**

NYDRANE is remarkable in that no toxic or unpleasant side-effects have been experienced with its use



NYDRANE usually makes patients more mentally alert, brighter, and more co-operative, opposing even the soporific action of any other anticonvulsant used



NYDRANE often successfully stabilises the more resistant cases, enabling them to lead a more normal, useful life



NYDRANE tablets are *colourless, odourless*, and are readily accepted and well tolerated



Nydrane tablets each containing 500 mg. *n*-benzyl- β -chloropropionamide, and Nydrane Co. tablets each containing 500 mg. *n*-benzyl- β -chloropropionamide and 20 mg. Phenobarbitone, are available in bottles of 50 and 250, and tins of 1,000 tablets

Prescribable on the N.H.S.

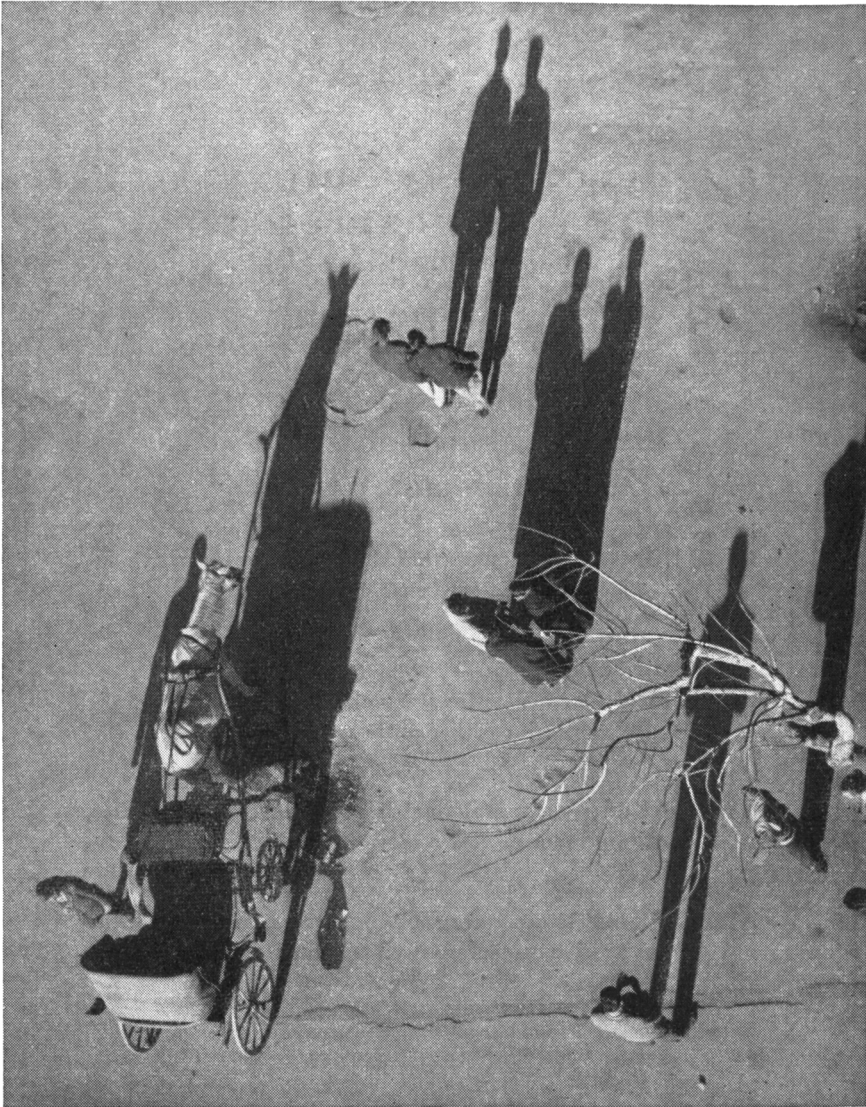
Literature and samples gladly sent on request



RONA LABORATORIES LTD

12/13 Molyneux Street, London, W.1

AMBassador 4437/8



Like shadows dappled on a sunlit street, the pictures which many people have of their lives may be distorted and flattened out of all recognition. Often the viewpoint of these tense, anxious patients is determined by factors beyond your control, for you cannot always remove the cause of their anxieties nor directly solve their problems.

By prescribing Equanil, however, you can provide them with safe, selective sedation which allows such souls to view their lives in true perspective, freed from the flickering fancies of their imaginations.

PACKS: *Bottles of 20 and 250.
Tablets of 400 mg. and 200 mg. (Half-strength)*

EQUANIL *meprobamate*
trade mark

Wyeth

JOHN WYETH AND BROTHER LIMITED, CLIFTON HOUSE, EUSTON ROAD, LONDON, N.W.1
Eq.6

Introducing



This association of 'Largactil' with amylobarbitone allows the characteristic therapeutic response of chlorpromazine to be obtained while the clinical usefulness of the amylobarbitone is increased.

The indications for 'Amargyl' are mainly in psychoneuroses, particularly in anxiety and tension states, and as an adjuvant to psychotherapy.

'Amargyl' is presented as lime-coloured, sugar-coated tablets each containing chlorpromazine hydrochloride 25 mgm., and amylobarbitone 50 mgm.

Further information is available on request.

MANUFACTURED BY  MAY & BAKER LTD

MA 4675

An M&B brand Medical Product

DISTRIBUTORS

PHARMACEUTICAL SPECIALITIES (MAY & BAKER) LTD · DAGENHAM

== J. & A. CHURCHILL LTD. ==

MENTAL DEFICIENCY

By L. T. HILLIARD, M.A., M.B., D.P.M., and B. H. KIRMAN, M.D., D.P.M.
90 Illustrations **60s.**
"....an outstanding contribution to the literature on the subject."—*Practitioner*.
"....an excellent text and reference book."—*Lancet*.

RECENT ADVANCES IN NEUROLOGY AND NEUROPSYCHIATRY

By Sir RUSSELL BRAIN, M.A., D.M., F.R.C.P., and E. B. STRAUSS, M.A., D.M., F.R.C.P.
Sixth edition 46 Illustrations **30s.**

PSYCHIATRY IN GENERAL PRACTICE

By C. A. H. WATTS, M.D., and B. M. WATTS, M.B.
12s. 6d.

CHEMOTHERAPY AND THE CENTRAL NERVOUS SYSTEM

By H. McLWAIN, Ph.D., D.Sc. **45s.**
By the same author:

BIOCHEMISTRY AND THE CENTRAL NERVOUS SYSTEM

43 Illustrations **40s.**

From U.S.A.

PSYCHOTHERAPY OF THE CHRONIC SCHIZOPHRENIC PATIENT

Edited by CARL A. WHITAKER, M.D.
Ready shortly **36s.**

PSYCHOLOGY OF PHYSICAL ILLNESS

Psychiatry Applied to Medicine, Surgery and the Specialties
Edited by LEOPOLD BELLAK, M.D. **37s. 6d.**

EPILEPSY AND THE FUNCTIONAL ANATOMY OF THE HUMAN BRAIN

By WILDER PENFIELD, O.M., C.M.G., M.D., D.Sc., F.R.C.S., F.R.S., and HERBERT JASPER, M.D., C.M.
8 colour plates and 314 black and white illustrations **115s.**

CLINICAL ASPECTS OF THE AUTONOMIC NERVOUS SYSTEM

By L. A. GILLILAN, Ph.D., M.D.
42 illustrations **45s.**

Ciba Foundation Symposia

CEREBROSPINAL FLUID

Production, Circulation, and Absorption
141 illustrations **50s.**

NEUROLOGICAL BASIS OF BEHAVIOUR

Illustrated *Ready May*

== 104 Gloucester Place, London, W.1 ==

'ECTONUSTIM'

E.C.T. APPARATUS and CEREBRAL STIMULATOR

(A.C. or D.C. Mains)



For a new improved E.C.T. technique which eliminates the need for muscle relaxants and anaesthetics.

Also:

'ECTONUS'
—E.C.T. apparatus

'ECTRON'
—E.C.T. apparatus

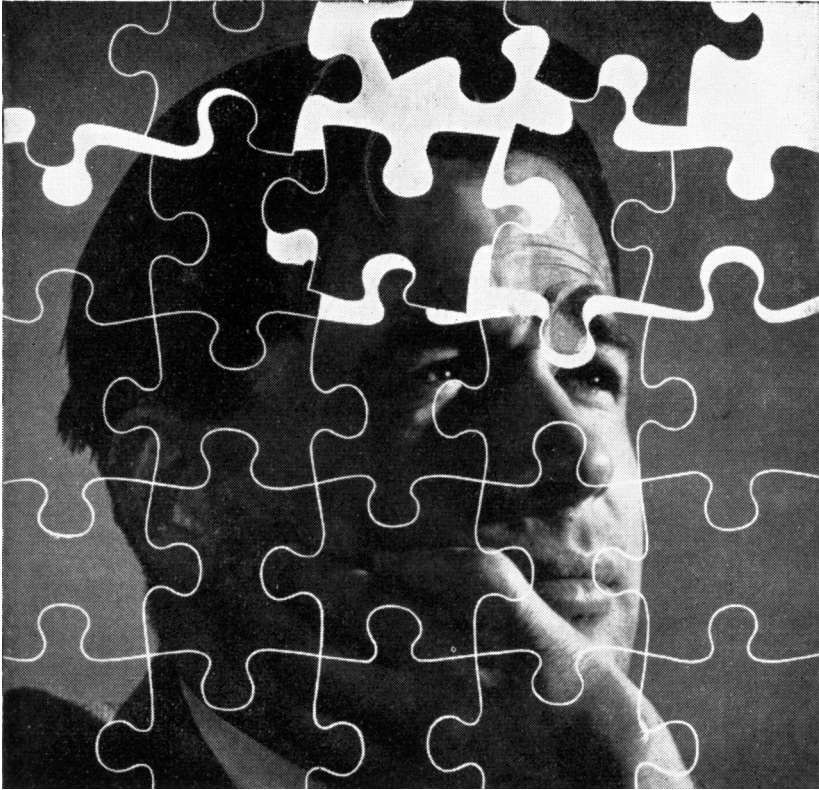
'ECTRON'
—Rubber Mouth Gag

'ECTRONOLYTE'
—Electrolyte Powder

Write for full details to: **ECTRON LTD**
REELEK WORKS · BALDOCK · HERTS · ENGLAND

Telegrams: "Reelek" Baldock

Telephone: Baldock 3276



In the re-integration of the epileptic patient

'Mysoline' not only reduces the frequency and severity of epileptic attacks, but also produces a marked sense of well-being. The patient is encouraged to take a renewed and more vigorous interest in life and to become a self-supporting member of the community.

For these reasons it is often advantageous to use 'Mysoline' in cases already controlled by other drugs, but in which a heightened interest and improved performance is desirable.

Universally acknowledged as a major advance, 'Mysoline' is indicated in all the manifestations of epilepsy.

'Mysoline', an outstandingly safe and effective anticonvulsant, is available as tablets of 0.25 g. and as a palatable oral suspension.

'Mysoline'
TRADE MARK

PRIMIDONE



IMPERIAL CHEMICAL INDUSTRIES LIMITED Pharmaceuticals Division Wilmslow Cheshire Ph.803

BARNWOOD HOUSE

GLOUCESTER

A REGISTERED HOSPITAL (outside the National Health Service), for the **CARE** and **TREATMENT** of **LADIES** and **GENTLEMEN** suffering from **NERVOUS** and **MENTAL DISORDERS**. Within two miles of the Western and London Midland Regional Railway Stations at Gloucester, the Hospital is easily accessible by rail from London and all parts of the United Kingdom. It is beautifully situated at the foot of the Cotswold Hills, and stands in its own grounds of over 300 acres. Voluntary Patients of both sexes are also received for treatment. Special accommodation is also provided at two villa residences, both of which stand in their own grounds and are entirely separate from the main Hospital. All the most modern methods of treatment including electric shock and prefrontal leucotomy are used.

HUME TOWERS

27 BRANKSOME WOOD ROAD, BOURNEMOUTH

TELEPHONE: WESTBOURNE 64384

has been opened as an ordinary nursing home for all kinds of borderline mental and nervous breakdown, with special accommodation for geriatric cases in a separate villa. Applications for admissions should be made to the Resident Medical Officer, Hume Towers.

For Terms, etc., apply to

G. W. T. H. FLEMING, M.R.C.S., L.R.C.P., D.P.M.,
Physician Superintendent

TELEPHONE: No. 66207 GLOUCESTER



La Métairie

NYON (Switzerland)

Lake of Geneva

Private Nursing Home, Founded in 1857. Several villas in a large park

All types of modern Treatment for Mental & Nervous Diseases

Rest Cures - Psychotherapy - Insulin
Sleep Cures - Carbo-Oxygen Therapy
Electro-shock

For further information: *Apply to Dr. W. SEMADENI, Chief Doctor*
Telephone 9.65.91

SPRINGFIELD HOUSE, Near BEDFORD

Telephone: Bedford 3417

A Private Mental Hospital two miles from Bedford Station, for 48 patients of both sexes (Certified or Voluntary). Extensive grounds and vegetable garden. Elderly patients requiring special care and attention are admitted.

Fees from 10 Guineas per week.

For Forms of Admission, etc., apply to the Resident Physician, CEDRIC W. BOWER

CHISWICK HOUSE - PINNER - MIDDLESEX

Telephone: PINNER 234

A private Nursing Home for patients suffering from all forms of Nervous and Psychological illness. Forty-four patients of both sexes. A certain number of elderly patients received. All modern forms of treatment. Psychotherapy, Electroplexy, Modified Insulin, etc. Two country houses in adjoining grounds of 5 and 6 acres each respectively, 12 miles north-west of London. Frequent trains Baker Street Station to Pinner. One-quarter of a mile from Pinner Station.

Apply to the Medical Director, DOUGLAS MACAULAY, M.D., D.P.M.

WYKE HOUSE, ISLEWORTH

MIDDLESEX Tel. EALing 7000

A Private Hospital for individual treatment of all forms of Nervous and Mental illness, including Alcoholism. Uncertified and certified patients are admitted and particular attention is given to the needs of the aged. This well-known Home for Men and Women is surrounded by attractive and secluded grounds, and all well-tried modern treatments are available.

H. PULLAR-STRECKER, M.D.

DR. G. W. SMITH, O.B.E.

HEIGHAM HALL, NORWICH

PRIVATE MENTAL HOME for Nervous and Mental illness. All types of treatment carried out. Accommodation for Alcoholics and Addicts available. Special Geriatric Unit now open.

Fees from 7 gns. per week upwards according to requirements.

Apply to Dr. J. A. SMALL.

Telephone: Norwich 20080.

NORTHUMBERLAND HOUSE

A Psychiatric Nursing Home for voluntary and certified patients. Situated in pleasant grounds at 237-9 Ballards Lane, N.3. Tel. FINchley 5283. Resident Medical Director, Dr. Robert M. Riggall, Memb. Brit. Psycho-Analytical Socy. Deep Insulin Coma Unit, psychotherapy, etc. Central heating and running water in all rooms.

HITCHAM PLACE, BURNHAM, BUCKS.

(late Fenstanton, Christchurch Road, S.W.2)

A Private Home for the Care and Treatment of a limited number of Ladies with Mental and Nervous Disorders. Temporary and Voluntary Patients received. Large Country Mansion with twenty acres of grounds in Green Belt. Home-like surroundings.

Apply: Dr. Madeline R. Lockwood, Resident Physician. Telephone: Burnham 624

CASSELL MEDICAL BOOKS

To be published 12th June

TOPICS IN PSYCHIATRY

*Edited by Professor T. FERGUSON RODGER,
R. M. MOWBRAY and J. R. ROY*

This volume contains papers presented at the post-graduate conference in psychiatry held last autumn under the auspices of the University of Glasgow and the Royal Faculty of Physicians and Surgeons. Topics, which are of considerable general medical and psychiatric interest at the present time, include SCHIZOPHRENIA, PSYCHOSOMATIC DISORDERS, TRANQUILLIZERS, and MENTAL DEFICIENCY.

20/- net

35 RED LION SQUARE, LONDON W.C.1



in severe mental illness, too . . .

Evidence of the value of MILTOWN meprobamate in the treatment of severe mental illness is now accumulating. MILTOWN may be used, for example, as an adjunct to electroshock treatment. Premedication with MILTOWN renders the patient composed, post-shock confusion is often reduced and full consciousness is more rapidly recovered. The use of MILTOWN has enabled some patients with serious, chronic psychoses to avoid hospitalization, and to adjust more easily to family and society. When administered in combination with chlorpromazine, MILTOWN meprobamate may bring improvement in patients previously resistant to drug therapy, including chlorpromazine alone. In these applications, and in many others in which its calming and relaxant effects are beneficial, MILTOWN may make the patient more accessible—and so improve his response to treatment.

Miltown^{*}

MEPROBAMATE

*REGD. TRADEMARK OF CARTER PRODUCTS, INC.

Tablets of 400 mg.

Bottles of 50 and 500



LEDERLE LABORATORIES DIVISION
Cyanamid OF GREAT BRITAIN LTD., London, W.C.2

INSTRUCTIONS TO AUTHORS

Strict observation of the following requirements will save intending authors considerable time and worry, and will facilitate the publication of papers submitted.

(1) Authors should consult a current issue to see how a paper should be presented. They should consult *General Notes on the Preparation of Scientific Papers*, published for the Royal Society by the Cambridge University Press, 200 Euston Road, London, N.W.1 (price 2s. 9d. post free).

(2) The title should be brief and contain no sub-heading. This should be followed by the author's name, his qualifications and his present appointment.

(3) Omit a summary of the literature when this has been adequately summarized elsewhere.

(4) For reasons of economy, case-histories of patients can be published only when they are of exceptional scientific interest.

(5) Diagrams and graphs must be drawn in black ink with properly printed lettering. If they have to be redrawn by the printer, the cost, which may amount to several pounds, will be charged to the author.

(6) Tables and graphs should be kept as few as possible. If they number more than a few, the author must be prepared to pay part of their cost.

(7) Any deviation or difference that might be due to random sampling must, if it is to be discussed in its general, scientific significance, be first shown, by calculation of the appropriate probability, to be significant statistically.

(8) All references should be given at the end of the paper, in alphabetical order, and be numbered, i.e.

(1) SMITH, A. B., *J. Ment. Sci.*, 1950, 95, 493.

(2) THOMAS, B. C., *Arch. Neur. Psychiat.*, 1955, 74, 489.

In the body of the paper they should appear as: Smith (1), Thomas (2).

(9) When the proof arrives from the printer it is for the correction of printer's mistakes only. Larger alterations can be made only with the Editor's permission and if the author is willing to defray the cost.

(10) Each author and co-author will receive 10 reprints of his paper free of charge. If further reprints are required the order should be sent direct to Messrs. Headley Brothers, Ltd., The Invicta Press, Ashford, Kent.

(11) A paper sent to the Editor-in-Chief is, as a rule, sent to one of the panel of Referees set out on the cover of the Journal for his opinion.

In coma

delirium*toxic
depression*

PARENTROVITE

Injectable B complex with vitamin C

A massive dose of injectable B complex with vitamin C . . . to restore normal cerebral functions in toxic states due to narcotic or barbiturate drugs, alcohol, or acute infections.

In boxes of 3 pairs of ampoules. Hospital pack also available.

A preparation **OROVITE**, containing the same B complex vitamins in high concentration for oral administration, is also available, *In tablets and elixir.*

Two groups of preparations containing the vitamin B complex in less massive concentration are : **BECOVITE & BEFORTISS.** *In tablets, ampoules and elixirs.*



VITAMINS LIMITED

(DEPT. AR. 6), UPPER MALL, LONDON, W.6.