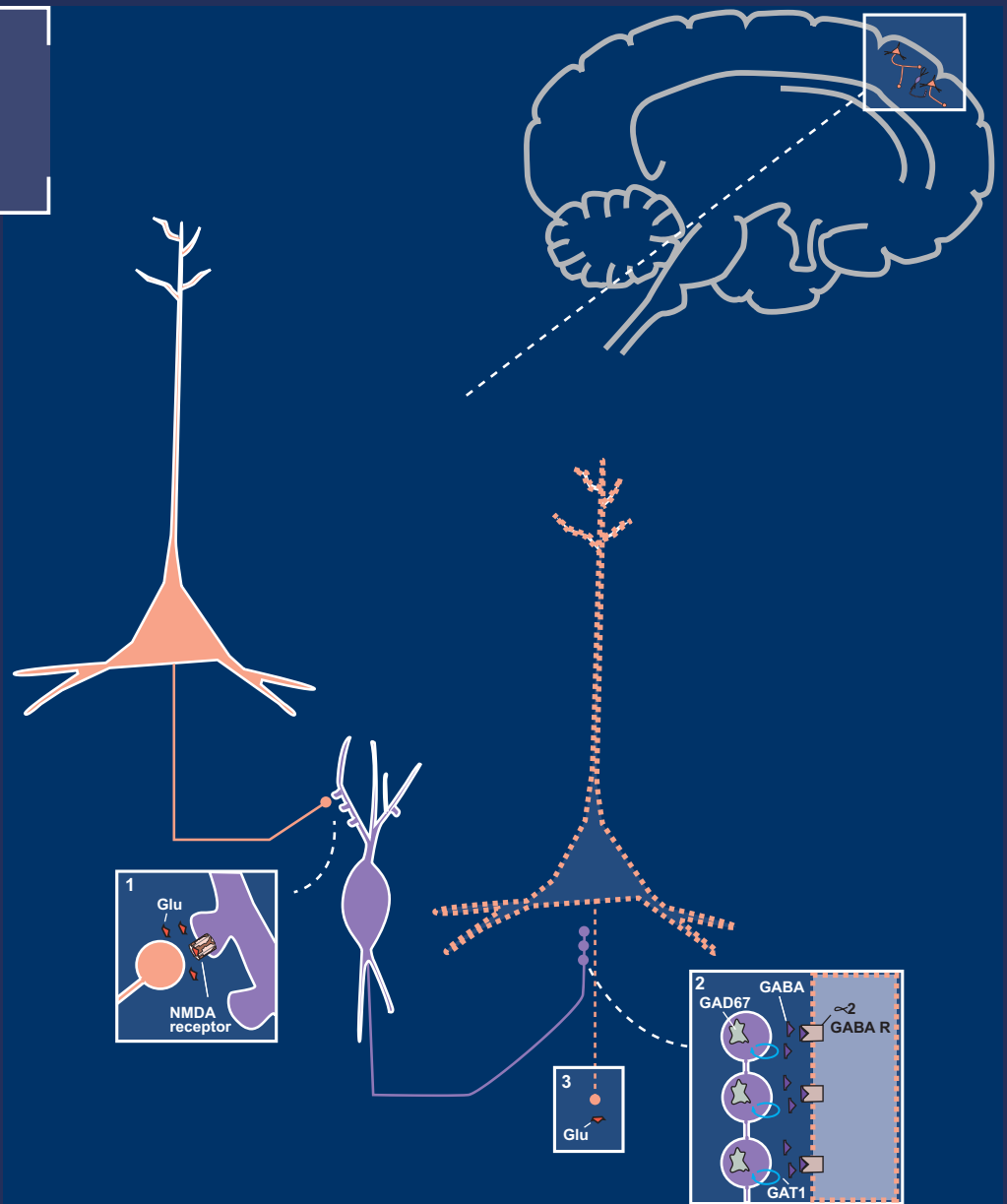


VOLUME 19 | Supplement 1

December 2014

ISSN: 1092-8529



journals.cambridge.org/cns

CNS SPECTRUMS

EDITOR-IN-CHIEF: **STEPHEN M. STAHL**

The journal of the
 **Neuroscience
Education Institute**

 **CAMBRIDGE
UNIVERSITY PRESS**

Editor-in-Chief

Stephen M. Stahl, Adjunct Professor of Psychiatry at the University of California San Diego, USA;
Honorary Visiting Senior Fellow at the University of Cambridge, UK.

Field Editors

Joseph F. Goldberg, Icahn School of Medicine at Mount Sinai, USA
Thomas E. Schlaepfer, University Hospital Bonn, Germany
Carlos A. Zarate, National Institute of Mental Health, USA

Deputy Editor

Thomas L. Schwartz, SUNY Upstate Medical University at Syracuse, USA

Editorial Board

Maria Conceição do Rosario, University of São Paulo Medical School, Brazil
Jeffrey L. Cummings, Cleveland Clinic, USA
Thilo Deckersbach, Harvard Medical School, USA
Koen Demyttenaere, University Psychiatric Center KuLeuven, Belgium
Karen D. Ersche, University of Cambridge, UK
Robert L. Findling, Case Western Reserve University, USA
Joseph F. Goldberg, Icahn School of Medicine at Mount Sinai, USA
Mark S. George, Medical University of South Carolina, USA
Eric Hollander, Albert Einstein College of Medicine and Montefiore Medical Center, USA
Daphne Holt, Harvard Medical School, USA
Peter B. Jones, University of Cambridge, UK
Andres M. Kanner, University of Miami, USA
Anthony D. Loebel, New York University School of Medicine, USA
Donatella Marazziti, University of Pisa, Italy
Herbert Y. Meltzer, Northwestern University, USA
Philip Mitchell, University of New South Wales, Australia
Jun Nakamura, University of Occupational and Environmental Health, Japan
Humberto Nicolini, National Mexican Institute of Psychiatry, Mexico
Andrew A. Nierenberg, Harvard Medical School, USA
Stefano Pallanti, University of Florence, Italy
Katharine A. Phillips, Brown University, USA
Diego A. Pizzagalli, Harvard Medical School, USA
Mark H. Pollack, Rush University Medical Center, USA
Mark H. Rapaport, Emory University, USA
Irismar Reis de Oliveira, Universidade Federal da Bahia, Brazil
Trevor W. Robbins, University of Cambridge, UK
Peter P. Roy-Byrne, University of Washington School of Medicine, USA
Barbara J. Sahakian, University of Cambridge, UK
Gerard Sanacora, Yale University School of Medicine, USA
Alan F. Schatzberg, Stanford University School of Medicine, USA
Thomas L. Schwartz, SUNY Upstate Medical University in Syracuse, USA
Jordan W. Smoller, Harvard Medical School, USA
Dan J. Stein, University of Cape Town (UCT), South Africa
Stephen Strakowski, University of Cincinnati, USA
T. Scott Stroup, Columbia University, USA
Frank I. Tarazi, Harvard Medical School, USA
Michael E. Thase, University of Pennsylvania, USA
Michael Trimble, National Hospital for Neurology, Queen Square, London
Madhukar H. Trivedi, University of Texas Southwestern Medical Center, USA
Karen Dineen Wagner, The University of Texas Medical Branch, USA
Katherine D. Warburton, Department of State Hospitals, USA
Stephen R. Wisniewski, University of Pittsburgh, USA
Shigeto Yamawaki, Hiroshima University, Japan
Carlos A. Zarate, Jr., National Institute of Mental Health, USA
Joseph Zohar, Tel Aviv University, Israel

Content Editor

Lisa Arrington, Cambridge University Press (larrington@cambridge.org)

Cover Image: The image on the cover shows a hypothetical model whereby glutamate is released from an intracortical pyramidal neuron and binds to an NMDA receptor on a GABA-ergic interneuron. GABA is then released and binds to receptors on the axon of another glutamate pyramidal neuron. This inhibits the neuron, thus reducing the release of cortical glutamate. The GABA interneuron and its NMDA synapse from the first neuron to the second is the hypothetical site of glutamate dysfunction in schizophrenia.

Stahl's Essential Psychopharmacology, 4th edition, by Stephen M. Stahl
Copyright © 2014 Stephen M. Stahl. Reproduced with permission.

CNS SPECTRUMS

CME SUPPLEMENT

CONTENTS

Treatment of bipolar depression: making sensible decisions

Leslie Citrome 1

Treatment resistance and other complicating factors in the management of schizophrenia

Martin T. Strassnig and Philip D. Harvey 13

Mechanism of action of narcolepsy medications

Chandan R. Gowda and Leslie P. Lundt 25

Thinking and acting beyond the positive: the role of the cognitive and negative symptoms in schizophrenia

Maren Carbon and Christoph U. Correll 35

Modulating the serotonin system in the treatment of major depressive disorder

Debbi Ann Morrissette and Stephen M. Stahl 54

CAMBRIDGE

JOURNALS

Behavioral and Brain Sciences

Editors

Barbara L. Finlay, *Cornell University, USA*

Paul Bloom, *Yale University, USA*

Behavioral and Brain Sciences, with its imposing ISI Impact Factor of 12.818, is an internationally renowned journal with an innovative format. Significant and controversial pieces of work are published from researchers in psychology, neuroscience, behavioral biology or cognitive science, together with 20–30 commentaries on each article from specialists in these disciplines, plus the author's response to them. The result is a unique forum for communication, criticism, stimulation, and unification of research in behavioral and brain sciences – from molecular neurobiology to artificial intelligence and the philosophy of the mind.



Behavioral and Brain Sciences is available online at:
<http://journals.cambridge.org/bbs>

To subscribe contact Customer Services

in Cambridge:

Phone +44 (0)1223 326070

Fax +44 (0)1223 325150

Email journals@cambridge.org

in New York:

Phone +1 (845) 353 7500

Fax +1 (845) 353 4141

Email

subscriptions_newyork@cambridge.org

Free email alerts

Keep up-to-date with new material – sign up at

journals.cambridge.org/register

For free online content visit:
<http://journals.cambridge.org/bbs>



CAMBRIDGE
UNIVERSITY PRESS