

## Effects of resveratrol on changes induced by high-fat feeding on clock genes in rats

Jonatan Miranda<sup>1,2</sup>, María P. Portillo<sup>1,2</sup>, Juan Antonio Madrid<sup>3</sup>, Noemí Arias<sup>1,2</sup>,  
M. Terasa Macarulla<sup>1,2</sup> and Marta Garaulet<sup>3\*</sup>

<sup>1</sup>Department of Nutrition and Food Sciences, Faculty of Pharmacy, University of the Basque Country (UPV/EHU), Paseo de la Universidad 7, 01006 Vitoria, Spain

<sup>2</sup>CIBERobn Physiopathology of Obesity and Nutrition, Institute of Health Carlos III (ISCIII), Madrid, Spain

<sup>3</sup>Department of Physiology, Faculty of Biology, University of Murcia, Campus Espinardo 30100 Murcia, Spain

(Submitted 4 May 2012 – Final revision received 8 February 2013 – Accepted 8 February 2013 – First published online 28 March 2013)

### Abstract

In mammals, the main component of the circadian system is the suprachiasmatic nucleus in the hypothalamus. However, circadian clocks are also present in most peripheral tissues, such as adipose tissue. The aim of the present study was to analyse the potential effects of resveratrol on changes induced by high-fat feeding in the expression of clock genes and clock-controlled genes in the white adipose tissue from rats. For this purpose, rats were divided into three groups: a control group, fed a standard diet, and two other groups, either fed a high-fat diet supplemented with resveratrol (RSV) or no resveratrol (HF). The expression of clock genes and clock-controlled genes was analysed by RT-PCR. Protein expression and fatty acid synthase (FAS) activity were also analysed. When comparing the controls, the RSV group showed similar patterns of response to the HF group, except for reverse erythroblastosis virus  $\alpha$  (*Rev-Erba*), which was down-regulated. The expression of this gene reached the same levels as in control rats. The response pattern of protein expression for *Rev-Erba* was similar to that found for gene expression. High-fat feeding up-regulated all adipogenic genes and resveratrol did not modify them. In the HF group, the activity of FAS tended to increase, while resveratrol decreased. In conclusion, resveratrol reverses the change induced by high-fat feeding in the expression of *Rev-Erba* in adipose tissue, which means that clock machinery is a target for this polyphenol. This change seems to be related to reduced lipogenesis, which might be involved in the body fat-lowering effect of this molecule.

**Key words:** High-fat feeding: Clock genes: Resveratrol: Rats

Overweight and obesity are a real health problem in the twenty-first century. According to the International Obesity Task Force, there are more than 1000 million overweight adults in the world, of whom at least 475 million are obese<sup>(1)</sup>. Although not exclusively, the phenomenon of obesity in present-day society is largely due to changes in lifestyle: (1) high-fat feeding; (2) high snacking frequency; (3) reduction in the total daily sleep period; (4) increase in the exposure to bright light during the night; (5) nocturnal feeding<sup>(2)</sup>. This background induces the brain to lose its perception of internal and external rhythms, and therefore to disrupt its circadian rhythms.

In mammals, the circadian timing system is composed of several endogenous clocks. The main component of this circadian system is the suprachiasmatic nucleus of the hypothalamus, but circadian clocks are also present in most peripheral tissues as is the case of adipose tissue<sup>(3,4)</sup>.

Recent research has revealed relationships between adipose tissue clock gene desynchronisation and the development of certain diseases, such as obesity<sup>(5–7)</sup>.

Input signals, such as light (light/dark changes) or meal times (intake/fast), set the clock of the mammal circadian system. Hence, the modification of these signals leads to clock gene disruption. It has been well reported that different periodicities in constant exposure of mice or human subjects to bright or dim light lead to a disruption between internal and external rhythms and are connected with a larger body mass gain and increased insulin:glucose ratio<sup>(8,9)</sup>. Similarly, elevated nocturnal feeding has been correlated with an increased risk of overweight in some studies<sup>(10,11)</sup>. Different publications have also confirmed the metabolic consequences (gain of more body mass) of unusual feeding timing<sup>(12,13)</sup>.

As mentioned previously, high-fat feeding, one of the characteristic unhealthy lifestyle choices in developed

**Abbreviations:** *Bmal1*, aryl hydrocarbon receptor nuclear translocator-like; HF, rats fed a commercial high-fat diet; *Rev-Erba*, reverse erythroblastosis virus  $\alpha$ ; RSV, rats fed a commercial high-fat diet supplemented with resveratrol added daily in amounts that ensured a dose of 30 mg/kg body weight/d.

\* **Corresponding author:** Professor M. Garaulet, fax +34 868883930, email garaulet@um.es

countries, is partially responsible for increased obesity. Several articles have pointed out that it produces progressive derangements in temporal communication among different food intake signals by modifying the strength, duration and frequency of circadian rhythms<sup>(14,15)</sup>. In this context, it has been demonstrated that high-fat feeding causes a phase delay in adiponectin circadian rhythm. Conversely, fasting has opposite effects, resulting in a phase advance<sup>(16,17)</sup>. Thus, it could be proposed that fasting or energy restriction could reverse circadian rhythmicity disruption in clock genes caused by high-fat feeding.

Scientific research is constantly working to find new molecules, either drugs or ingredients in the diet, which are effective in preventing excess accumulation of body fat and associated complications. This is the case of *trans*-resveratrol (3,4',5-trihydroxystilbene), a polyphenol present in different foods (berries and some nuts) and beverages of plant origin (wine and juice)<sup>(18)</sup>. The effects of this molecule on circadian rhythmicity in adipose tissue have not been previously studied; however, considering that many health benefits associated with resveratrol have been attributed to its ability to mimic the effects of a energy-restrictive diet<sup>(19)</sup>, resveratrol may be a useful tool in avoiding circadian disruption caused by high-fat feeding. The evidence that resveratrol regulates the expression of clock genes period homologue 1 (*Per1*), *Per2* and aryl hydrocarbon receptor nuclear translocator-like (*Bmal1*) in Rat-1 fibroblast cells<sup>(20)</sup> is in good accordance with this proposal.

Thus, the purpose of the present study was to analyse the potential effect of resveratrol on changes induced by high-fat feeding in the expression of different clock genes and clock-controlled genes in white adipose tissue.

## Materials and methods

### *Animals, diets and experimental design*

Male Wistar rats (Harlan Ibérica), 6 weeks old, were individually housed in polycarbonate metabolism cages (Tecniplast Gazzada). The animals were housed in a temperature-controlled facility ( $22 \pm 2^\circ\text{C}$ ) and maintained under a light-dark cycle with 12 h light and 12 h darkness per d (lights on 22.00 hours, lights off 10.00 hours). The experiment took place in accordance with the institution's guide for the care and use of laboratory animals (CUEID CEBA/30/2010). After a 6 d adaptation period, the animals were randomly divided into three groups (*n* 8) and fed experimental diets for 6 weeks. The experimental diets were supplied by Harlan Ibérica. The control group was fed a commercial standard diet. Of these experimental groups, one (control group) was fed a commercial standard diet (reference TD.06 416), which provided 15.5 kJ/g (3.7 kcal/g) and 10% of energy as fat. The other two groups, high-fat group (HF) and resveratrol group (RSV), were fed a commercial high-fat diet (reference TD.06 415), which provided 19.3 kJ/g (4.6 kcal/g) and 45% of energy as fat. In the RSV group, resveratrol was daily added to the fresh diet, as described previously<sup>(21)</sup>, in amounts that assured a dose of 30 mg/kg body weight per d. The diet was provided to rats at 10.00 hours,

when the dark phase started in the animal facility room. All animals had free access to the diet and water.

Body weight and food intake were measured daily. At the end of the experimental period, rats were killed under anaesthesia (chloral hydrate) by cardiac exsanguination at the beginning of their activity phase, between 10.00 and 12.00 hours (from 0 to 2 h after dark clock onset). Although it is well known that rats eat mainly during the dark phase, in order to avoid any potential differences among them induced by spontaneous feeding, and to mimic the natural feeding rhythm of animals, all rats were fasted during the last 12 h before killing. Adipose tissues from the epididymal, perirenal, mesenteric and subcutaneous regions were dissected and weighed and then immediately frozen. All samples were stored at  $-80^\circ\text{C}$  until analysis.

The experimental procedure used in the present study followed the guidelines of the Animal Usage of the University of Basque Country (CUEID CEBA/30/2010).

### *RNA extraction and quantitative real-time PCR*

Total RNA was isolated from the epididymal adipose tissue and liver using Trizol (Invitrogen) according to the manufacturer's instructions. After DNase treatment (Ambion; The RNA Company, Applied Biosystems), 1.5  $\mu\text{g}$  of total RNA were reverse transcribed into complementary DNA (iScript cDNA Synthesis Kit; Bio-Rad) according to the manufacturer's instructions. A 9.5  $\mu\text{l}$  aliquot of each diluted complementary DNA sample was used for PCR amplification in a 25  $\mu\text{l}$  reaction volume. The complementary DNA samples were amplified on an iCycler-MyiQ real-time PCR detection system (Bio-Rad) in the presence of SYBR Green master mix (Applied Biosystems) and a 300 nM concentration of each of the sense and antisense primers. Specific primers were synthesised commercially (Integrated DNA Technologies), and the sequences are listed in Table 1<sup>(22–24)</sup>. mRNA levels in all samples were normalised to the values of *18S* and the results expressed as fold changes of the threshold cycle ( $C_t$ ) value relative to the controls using the  $2^{-\Delta\Delta C_t}$  method<sup>(25)</sup>.

### *Western blot*

Epididymal nuclear proteins were extracted and quantified according to the manufacturer's instructions (Nuclear Extraction Kit; Cayman Chemical Company). Immunoblot analysis was performed using 20  $\mu\text{g}$  of nuclear extracts separated by electrophoresis in a 10% SDS-polyacrylamide gel and transferred to polyvinylidene difluoride membranes. Phospho-reverse erythroblastosis virus (Rev-Erb $\alpha$  Ser55/59) levels were detected via specific antibody (1:1000; Cell Signaling Technology).

### *Fatty acid synthase activity*

For the analysis of fatty acid synthase activity, 1 g of epididymal adipose tissue was homogenised in 5 ml of buffer (pH 7.6) containing 150 mM-KCl, 1 mM-MgCl<sub>2</sub>, 10 mM-*N*-acetyl-cysteine and 0.5 mM-dithiothreitol. After centrifugation at 100 000 **g** for 40 min at  $4^\circ\text{C}$ , the supernatant fraction was used for the analysis.

**Table 1.** Primers for PCR amplification of each gene studied (SYBR® Green RT-PCR)

Primers	Sense primer	Antisense primer
<i>Bmal1</i>	5'-GCAATCTGAGCTGCCTCGTT-3'	5'-CCCGTATTCCCCGTTCACT-3' <sup>(22)</sup>
<i>C/EBPβ</i>	5'-GAG CGACGAGTACAAGAT GCG-3'	5'-GCTGCTCCACCTTCTTCT GC-3'
<i>Cry1</i>	5'-AAGTCATCGTGCATTTCA-3'	5'-TCATCATGGTCGTCGGACAGA-3' <sup>(22)</sup>
<i>Clock</i>	5'-TCTCTTCCAAACCAGACGCC-3'	5'-TGCGGCATACTGGATGGAAT-3' <sup>(23)</sup>
<i>LPL</i>	5'-CAGCTGGGCCTAACTTTGAG-3'	5'-CCTCTCTGCAATCACACGAA-3'
<i>Npas2</i>	5'-CGGGACCAGTTCAATGTTCT-3'	5'-CCATCTAACGCCTCCAACAT-3' <sup>(23)</sup>
<i>PPARα</i>	5'-GAGAAAGCAAACCTGAAAGCAGAGA-3'	5'-GAAGGGCGGGTTATTGCTG-3'
<i>PPARγ</i>	5'-ATTCTGGCCACCAACTTCGG-3'	5'-TGGAAGCCTGATGCTTTATCCCCA-3'
<i>Per2</i>	5'-CCCATCCCACACTTGCCCTC-3'	5'-CACTGTGCCAGCCGGG-3' <sup>(22)</sup>
<i>Rev-Erbα</i>	5'-ACAGCTGACACCACCCAGATC-3'	5'-CATGGGCATAGGTGAAGATTTCT-3' <sup>(23)</sup>
<i>Rora</i>	5'-CCCGATGTCTTCAAATCCTTAGG-3'	5'-TCAGTCAGATGCATAGAACACAAACTC-3' <sup>(23)</sup>
<i>SREBP1c</i>	5'-GGAGCCATGGATTGCACATT-3'	5'-GCTTCCAGAGAGGAGCCAG-3' <sup>(24)</sup>
<i>Sirt1</i>	5'-GACGACGAGGGCGAGGAG-3'	5'-ACAGGAGGTTGTCTCGGTAGC-3'
<i>18S</i>	5'-GTGGGCCTGCGCTTAAT-3'	5'-GCCAGAGTCTCGTTCGTTATC-3'

*Bmal1*, aryl hydrocarbon receptor nuclear translocator-like; *C/EBP*, CCAAT/enhancer-binding protein; *Cry*, cryptochrome; *Clock*, clock homologue; *LPL*, lipoprotein lipase; *Npas*, neuronal PAS domain protein; *Per*, period homologue; *Rev-Erb*, reverse erythroblastosis virus; *Ror*, retinoid-related orphan receptor; *SREBP*, sterol regulatory element-binding protein; *Sirt*, sirtuin.

Enzyme activity was measured by using a spectrophotometric method, as described previously<sup>(26)</sup>, and expressed as nmol NADPH consumed/min per mg protein.

### Statistical analysis

Results are presented as means with their standard errors. Statistical analysis was performed with SPSS Statistics 19.0 (IBM, Inc.) using one-way ANOVA, followed by Tukey's *post hoc* test. For body weight and energy intake time courses, ANOVA with repeated measures were used. Significance was assessed at the  $P < 0.05$  level.

## Results

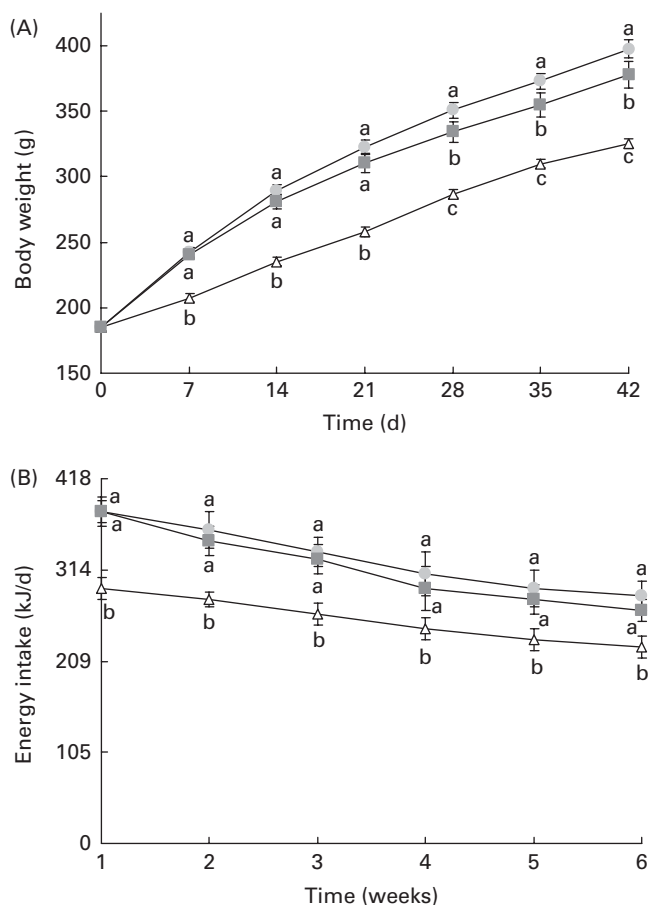
### Body weight and adipose tissue weights

The final body weight and adipose tissue weights were significantly higher in animals from the HF groups than those from the control group (Fig. 1(A) and Table 2). Resveratrol significantly reduced body weight and the sum of adipose tissues, but these parameters did not reach the values observed for the control rats (Fig. 1(A) and Table 2). Although no significant differences in terms of food intake (g) were found between the control rats and rats fed the high-fat diets (control *v.* HF and RSV), energy intake was significantly higher in these rats than in the control rats. However, no differences in this parameter were found between the rats from the HF and RSV groups (Fig. 1(B)).

### Clock genes and clock-controlled genes in adipose tissue

Fig. 2 represents clock and clock-controlled gene mRNA levels, expressed as values relative to the controls (control group), in the epididymal adipose tissue from rats in the HF and RSV groups. High-fat feeding led to the up-regulation of the negative elements (*Per2* and cryptochrome 1 (*Cry1*)) and clock-controlled genes (*PPARα*, *Rev-Erbα* and retinoid-related orphan receptor (*Rora*)), with the exception of sirtuin (*Sirt1*). With regard to the positive elements, *Bmal1* was

down-regulated and clock homologue (*Clock*) and neuronal PAS domain protein 2 (*Npas2*) remained unchanged. The RSV group showed a similar pattern of response to the HF group when compared with the controls, except for



**Fig. 1.** (A) Body weight and (B) energy intake time courses in rats fed on the experimental diets for 6 weeks. Values are means for eight rats per group, with their standard errors represented by vertical bars. <sup>a,b,c</sup> Mean values with unlike letters were significantly different ( $P < 0.05$ ).  $\Delta$ , Group fed a commercial standard diet;  $\square$ , group fed a commercial high-fat diet;  $\blacksquare$ , group fed a commercial high-fat diet in which resveratrol was added daily in amounts that ensured a dose of 30 mg/kg body weight per d.

**Table 2.** Liver weight and adipose tissue weights in rats fed on the experimental diets for 6 weeks (Mean values with their standard errors, *n* 8 animals per group)

	Control		HF		RSV		<i>P</i> (ANOVA)
	Mean	SEM	Mean	SEM	Mean	SEM	
Liver weight (g)	8.8 <sup>b</sup>	0.3	10.2 <sup>a</sup>	0.4	9.4 <sup>a</sup>	0.2	< 0.05
White adipose tissue weights (g)							
Perirenal	6.01 <sup>c</sup>	0.57	15.70 <sup>a</sup>	1.07	13.13 <sup>b</sup>	1.05	< 0.001
Epididymal	6.66 <sup>c</sup>	0.49	16.18 <sup>a</sup>	0.85	13.40 <sup>b</sup>	1.03	< 0.001
Mesenteric	3.11 <sup>b</sup>	0.16	5.62 <sup>a</sup>	0.34	5.14 <sup>a</sup>	0.20	< 0.001
Subcutaneous	6.90 <sup>b</sup>	0.70	17.72 <sup>a</sup>	1.95	15.06 <sup>a</sup>	1.52	< 0.001
Σ Adipose tissues	22.6 <sup>c</sup>	1.67	54.37 <sup>a</sup>	4.05	45.08 <sup>b</sup>	2.86	< 0.001

HF, rats fed a commercial high-fat diet; RSV, rats fed a commercial high-fat diet supplemented with resveratrol added daily in amounts that ensured a dose of 30 mg/kg body weight/d.  
<sup>a,b,c</sup>Mean values within a row with unlike superscript letters were significantly different.

*Rev-Erbα*, which was down-regulated ( $P < 0.05$ ). The expression of this gene reached the same levels as in the control rats.

Due to the fact that *Rev-Erbα* was the only gene significantly modified by resveratrol, its protein expression was also analysed. The pattern of response of protein expression was similar to that found for gene expression, although statistical significance was not reached. Rats from the HF group showed increased values when compared with the control rats (50%). By contrast, no differences were found between the control group and the RSV group (Fig. 3).

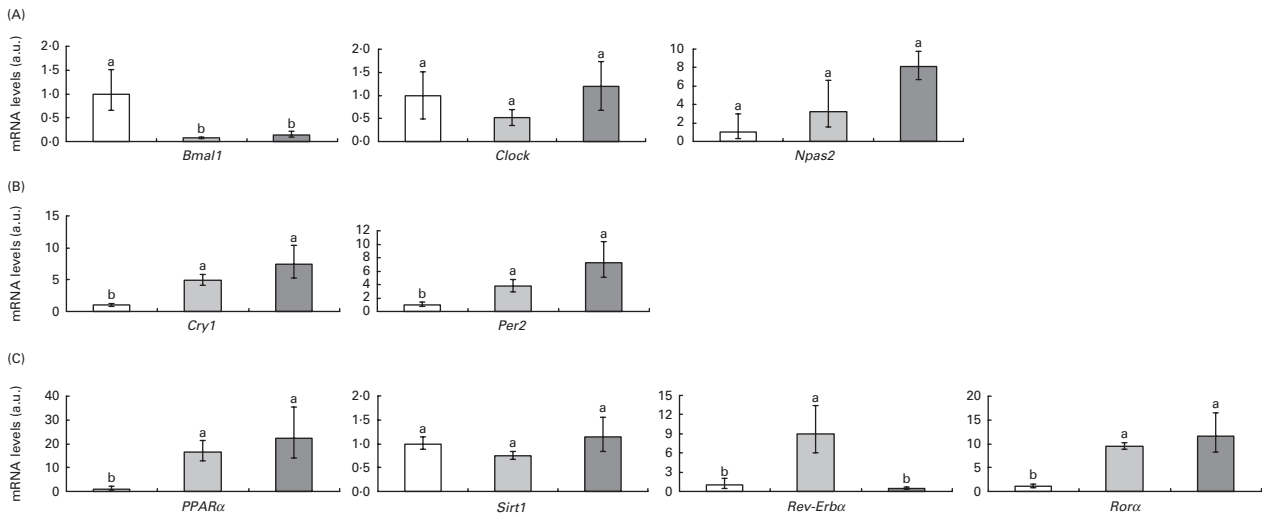
*Parameters controlled by reverse erythroblastosis virus α in adipose tissue*

*Rev-Erbα* is an important transcription factor in the control of adipogenesis and *de novo* lipogenesis. For this reason, the expression of the genes CCAAT-enhancer-binding

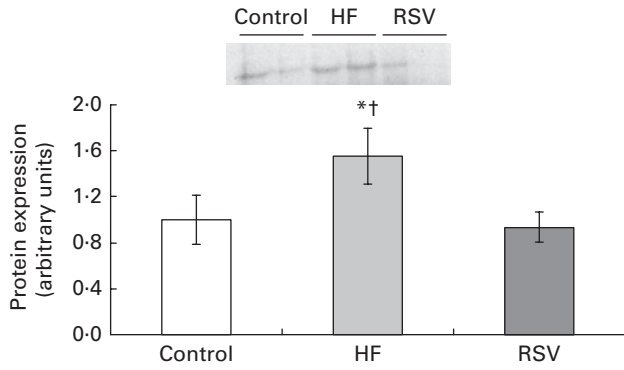
protein (*C/EBPβ*), sterol regulatory element-binding protein (*SREBP1c*), *PPARγ* and lipoprotein lipase (*LPL*), as well as the activity of fatty acid synthase, were also analysed. High-fat feeding up-regulated all adipogenic genes and resveratrol did not affect this response (Fig. 4). As far as fatty acid synthase was concerned, high-fat feeding tended to increase its activity ( $P < 0.09$ ) and resveratrol decreased it ( $P < 0.03$ ) (Fig. 5).

*Clock genes and clock-controlled genes in the liver*

In the liver, high-fat feeding down-regulated two positive elements, *Bmal1* and *Npas2*, and up-regulated the negative elements and *PPARα*. *Clock*, *Reb-Erbα*, *Rora* and *Sirt1* gene expression remained unchanged. As in adipose tissue, resveratrol down-regulated ( $P < 0.05$ ) the expression of *Rev-Erbα* in rats fed the high-fat diet (Fig. 6).



**Fig. 2.** (A) Positive elements (aryl hydrocarbon receptor nuclear translocator-like (*Bmal1*), clock homologue (*Clock*) and neuronal PAS domain protein 2 (*Npas2*), (B) negative elements (cryptochrome 1 (*Cry1*) and period homologue 2 (*Per2*)) and (C) clock-controlled genes (*PPARα*, sirtuin (*Sirt1*), reverse erythroblastosis virus α (*Rev-Erbα*) and retinoid-related orphan receptor α (*Rora*)) mRNA levels expressed as values relative to the controls (control group), in the epididymal adipose tissue of rats fed on the experimental diets for 6 weeks (□, group fed a commercial standard diet, used as a control; ▒, group fed a commercial high-fat diet; ▓, group fed a commercial high-fat diet in which resveratrol was daily added in amounts that ensured a dose of 30 mg/kg body weight per d). Values are means for eight rats per group, with their standard errors represented by vertical bars. <sup>a,b</sup>Mean values with unlike letters were significantly different ( $P < 0.05$ ). a.u., Arbitrary units.



**Fig. 3.** Reverse erythroblastosis virus  $\alpha$  levels of protein expression, presented as values relative to the controls (control group), in the epididymal adipose tissue of rats fed on the experimental diets for 6 weeks (control, group fed a commercial standard diet, used as a control; HF, group fed a commercial high-fat diet; RSV, group fed a commercial high-fat diet in which resveratrol was added daily in amounts that ensured a dose of 30 mg/kg body weight per d). Values are means for eight rats per group, with their standard errors represented by vertical bars. \* Mean value was different from that of the control group ( $P < 0.05$ ). † Mean value was different from that of the RSV group ( $P < 0.05$ ).

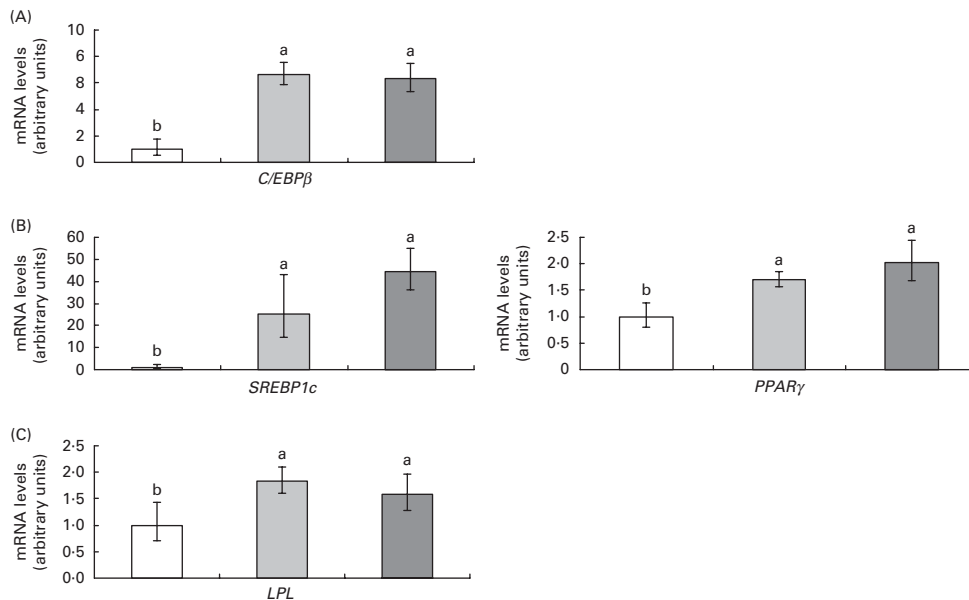
**Discussion**

The regulation of the peripheral clock and the clock-controlled genes present in the adipose tissue is still unclear<sup>(27)</sup>. In the present study, we have analysed the effects of resveratrol on changes induced by high-fat feeding in a wide range of genes included in the clock machinery of adipose tissue: the positive elements of the clock (*Bmal*, *Clock* and *Npas2*), the negatives ones (*Cry1* and *Per2*) and most of the clock-controlled genes, which connect the circadian clock with adipose tissue metabolism, such as *Rora*, *Rev-Erba*, *Sirt1* and *PPARa*.

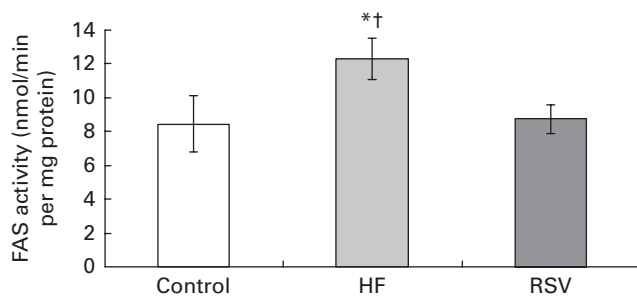
The effect of a high-fat diet on the expression of clock genes has previously been reported<sup>(13,16,17)</sup>. Although the results obtained with regard to the expression of clock genes and clock-controlled genes in rats fed a high-fat diet were not part of the original scope of the present study, they do provide additional information as studies published up to date have been carried out in mice, while the present study was performed in rats. Moreover, these results are necessary to assess the effects of resveratrol on changes induced by high-fat feeding. It is difficult to make comparisons between previous studies and the present study due to the fact that, for example, in the study by Barnea *et al.*<sup>(16,17)</sup>, mice were killed after a 24 h fast. Nevertheless, and in spite of this difference, in the present study, *Bmal1* was altered by the high-fat diet, as Barnea *et al.*<sup>(17)</sup> similarly observed in their studies. In addition, we also observed changes in the negative elements, as well as in most of the clock-controlled genes.

Despite the scientific community’s attention to biomolecules in recent years because of their beneficial effects on health, very little is known about its potential effects on the clock system. Thus, having focused the present study on resveratrol, we have demonstrated for the first time that this biomolecule can reverse the effect of high-fat feeding on *Rev-Erba* gene expression in the adipose tissue. We have also analysed the protein expression of this gene, finding a similar response pattern.

It is important not to forget that, as gene expression was measured only at one point, it is not possible to infer whether the observed differences among the experimental groups are due to a phase shift or to differences in gene expression degree. Nevertheless, this is a first approach to analyse whether clock machinery mediates the body fat-lowering



**Fig. 4.** mRNA levels of genes ((A) CCAAT-enhancer-binding protein (*C/EBPβ*), (B) sterol regulatory element-binding protein 1c (*SREBP1c*) and *PPARγ* and (C) lipoprotein lipase (*LPL*)) related to adipogenesis in the epididymal adipose tissue from rats fed on the experimental diets for 6 weeks (□, group fed a commercial standard diet, used as a control; ▒, group fed a commercial high-fat diet; ■, group fed a commercial high-fat diet in which resveratrol was added daily in amounts that ensured a dose of 30 mg/kg body weight per d). Values are means for eight rats per group, with their standard errors represented by vertical bars. <sup>a,b</sup> Mean values with unlike letters were significantly different ( $P < 0.05$ ).



**Fig. 5.** Fatty acid synthase (FAS) activity in the epididymal adipose tissue from rats fed a commercial high-fat diet in which resveratrol was added daily in amounts that ensured a dose of 30 mg/kg body weight per d. Control, group fed a commercial standard diet, used as a control; HF, group fed a commercial high-fat diet; RSV, group fed a commercial high-fat diet in which resveratrol was added daily in amounts that ensured a dose of 30 mg/kg body weight per d. Values are means for eight rats per group, with their standard errors represented by vertical bars. \* Mean value was different from that of the control group ( $P < 0.09$ ). † Mean value was significantly different from that of the RSV group ( $P < 0.03$ ).

effect of resveratrol, and therefore further studies should be carried out.

*Rev-Erba* is a clock-controlled gene induced during adipogenesis<sup>(28,29)</sup>. In order to analyse whether changes observed in the present study in the expression of this gene were related to changes in adipogenesis, the expression of several genes involved in this metabolic process was examined. As expected, and in agreement with the literature<sup>(30)</sup>, adipogenic genes were up-regulated in rats from the HF group, suggesting that, under high-fat feeding conditions, the up-regulation of *Rev-Erba* was related to increased adipogenesis. By contrast, in comparison with the HF group, the down-regulation of *Rev-Erba* observed in the RSV group was not accompanied by reduced adipogenesis as adipogenic genes remained unchanged.

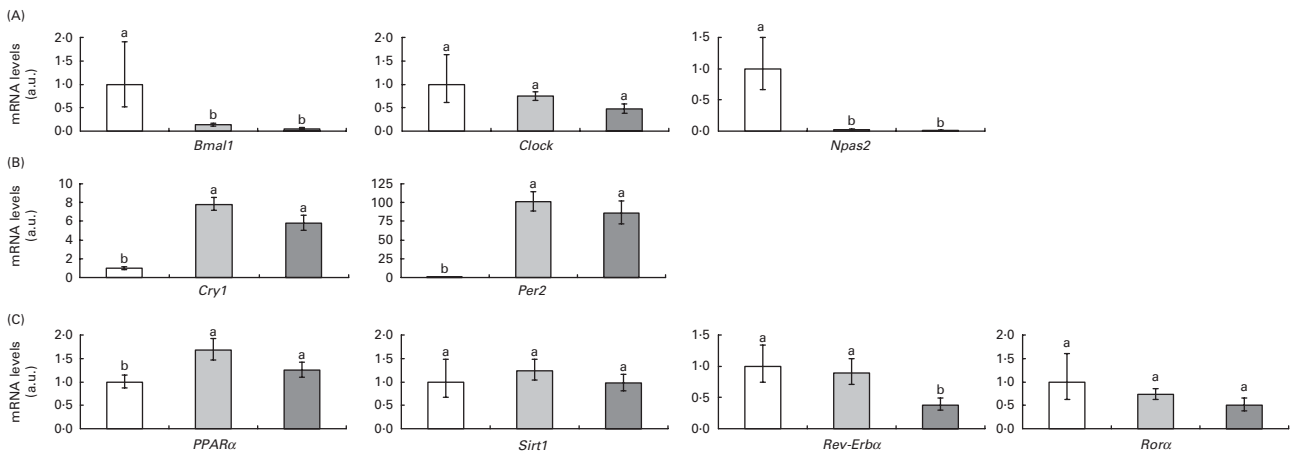
Moreover, in the case of SREBP, *Rev-Erba* participates not only in its gene expression regulation but also in its translocation

to the nucleus<sup>(31)</sup>, meaning that it regulates the maturation, and thus the activation, of this family of transcription factors. SREBP1c, which regulates adipogenesis, also plays a crucial role in the regulation of *de novo* lipogenesis by controlling the transcription of fatty acid synthase, a key enzyme in this metabolic process<sup>(32)</sup>. We analysed the activity of this enzyme in order to check whether in the present study the down-regulation induced by resveratrol in *Rev-Erba* was related to reduced lipogenesis. We further observed that it followed the same pattern of response as *Rev-Erba* in terms of both gene and protein expression. This means that enzyme activity was increased by high-fat feeding and decreased by resveratrol. According to these data, it can be proposed that resveratrol prevents fat accumulation induced by high-fat feeding by reducing lipogenesis in the adipose tissue, at least in part via *Rev-Erba*.

*Rev-Erba* also plays an important role in maintaining proper timing of the circadian system<sup>(28)</sup>. Thus, in the case of the HF group, the differential response of *Bmal1* expression with respect to the other clock genes and clock-controlled genes obtained in the present study could also be related to the expression of *Rev-Erba*, as this gene acts as a negative regulator of *Bmal1*<sup>(28)</sup>. This situation did not take place in the case of the RSV-treated rats in which both *Bmal1* and *Rev-Erba* were down-regulated. Consequently, further research is needed to gain more insight into the relationship between *Bmal1* and *Rev-Erba*.

Although the present study focused on adipose tissue, we also analysed the expression of clock genes and clock-controlled genes in the liver in order to know whether the effects of resveratrol were tissue-dependent. We observed that rats from the RSV group showed a down-regulation of *Rev-Erba* in this organ, similar to that observed in the epididymal adipose tissue. This result reinforces the potential use of resveratrol as a molecule affecting clock machinery.

It has been reported that many health benefits associated with resveratrol have been attributed to its ability to mimic



**Fig. 6.** mRNA levels of the analysed clock genes, (A) positive elements (aryl hydrocarbon receptor nuclear translocator-like (*Bmal1*), clock homologue (*Clock*) and neuronal PAS domain protein 2 (*Npas2*)) and (B) negative elements (cryptochrome 1 (*Cry1*) and period homologue 2 (*Per2*)), and (C) the clock-controlled genes (*PPARα*, sirtuin (*Sirt1*), reverse erythroblastosis virus  $\alpha$  (*Rev-Erba*) and retinoid-related orphan receptor (*Rora*)) in the liver from rats fed on the experimental diets for 6 weeks (□, group fed a commercial standard diet, used as a control; ▒, group fed a commercial high-fat diet; ■, group fed a commercial high-fat diet in which resveratrol was added daily in amounts that ensured a dose of 30 mg/kg body weight per d). Values are means for eight rats per group, with their standard errors represented by vertical bars. <sup>a,b</sup> Mean values with unlike letters were significantly different ( $P < 0.05$ ). a.u., arbitrary units.

the effects of an energy-restrictive diet<sup>(19)</sup>. On the other hand, it has been proposed that fasting or energy restriction could reverse circadian rhythmicity disruption in *Rev-Erba* caused by high-fat feeding, by influencing the circadian phase or the mRNA level. In good accordance with these facts, in the present study, resveratrol down-regulated *Rev-Erba*, imitating the reported effects of energy restriction.

In conclusion, resveratrol reverses the alteration induced by high-fat feeding in the expression of *Rev-Erba* in the adipose tissue, which means that clock machinery is a target for this polyphenol in its protective role on obesity. This change is related to reduced lipogenesis, which might be involved in the body fat-lowering effect of this molecule.

### Acknowledgements

The present study was supported by grants from the Instituto de Salud Carlos III (RETIC PREDIMED, CIBEROBn), the Spanish Government of Science and Innovation (BFU2011-24720 and AGL2011-27406-ALI), the Tomás Pascual and Pilar Gómez-Cuétara Foundations, the Government of the Basque Country (IT-386-10, IT-572-13), the Séneca Foundation from the Government of Murcia (15123/PI/10) and the University of the Basque Country (UPV/EHU) (ELDUNANOTEK UFI11/32). The contributions of each author were as follows: M. T. M. and N. A. took care of the animals during the experimental period and prepared the experimental diets; J. M. and N. A. performed the RNA quantification by real-time RT-PCR, Western blot analysis and enzyme activity assessment; J. A. M. carried out the bibliography revision; M. G. and M. P. P supervised the results and wrote the manuscript. None of the authors has any conflict of interest to declare.

### References

1. International Obesity Task Force I (2012) *Obesity Prevalence Worldwide*. International Association for the Study of Obesity. <http://www.iaso.org/iotf/obesity/> (accessed December 2012).
2. Delezie J & Challet E (2011) Interactions between metabolism and circadian clocks: reciprocal disturbances. *Ann N Y Acad Sci* **1243**, 30–46.
3. Kohsaka A & Bass J (2007) A sense of time: how molecular clocks organize metabolism. *Trends Endocrinol Metab* **18**, 4–11.
4. Reppert SM & Weaver DR (2002) Coordination of circadian timing in mammals. *Nature* **418**, 935–941.
5. Turek FW, Joshu C, Kohsaka A, *et al.* (2005) Obesity and metabolic syndrome in circadian Clock mutant mice. *Science* **308**, 1043–1045.
6. Yoshida C, Shikata N, Seki S, *et al.* (2012) Early nocturnal meal skipping alters the peripheral clock and increases lipogenesis in mice. *Nutr Metab (Lond)* **9**, 78.
7. Doi M (2012) Circadian clock-deficient mice as a tool for exploring disease etiology. *Biol Pharm Bull* **35**, 1385–1391.
8. Karatsoreos IN, Bhagat S, Bloss EB, *et al.* (2011) Disruption of circadian clocks has ramifications for metabolism, brain, and behavior. *Proc Natl Acad Sci U S A* **108**, 1657–1662.
9. Martino TA, Tata N, Belsham DD, *et al.* (2007) Disturbed diurnal rhythm alters gene expression and exacerbates

cardiovascular disease with rescue by resynchronization. *Hypertension* **49**, 1104–1113.

10. Colles SL, Dixon JB & O'Brien PE (2007) Night eating syndrome and nocturnal snacking: association with obesity, binge eating and psychological distress. *Int J Obes (Lond)* **31**, 1722–1730.
11. Lundgren JD, Smith BM, Spresser C, *et al.* (2010) The relationship of night eating to oral health and obesity in community dental clinic patients. *Gen Dent* **58**, e134–e139.
12. Mistlberger RE, Lukman H & Nadeau BG (1998) Circadian rhythms in the Zucker obese rat: assessment and intervention. *Appetite* **30**, 255–267.
13. Kohsaka A, Laposky AD, Ramsey KM, *et al.* (2007) High-fat diet disrupts behavioral and molecular circadian rhythms in mice. *Cell Metab* **6**, 414–421.
14. Cha MC, Chou CJ & Boozer CN (2000) High-fat diet feeding reduces the diurnal variation of plasma leptin concentration in rats. *Metabolism* **49**, 503–507.
15. Havel PJ, Townsend R, Chaump L, *et al.* (1999) High-fat meals reduce 24-h circulating leptin concentrations in women. *Diabetes* **48**, 334–341.
16. Barnea M, Madar Z & Froy O (2009) High-fat diet delays and fasting advances the circadian expression of adiponectin signaling components in mouse liver. *Endocrinology* **150**, 161–168.
17. Barnea M, Madar Z & Froy O (2010) High-fat diet followed by fasting disrupts circadian expression of adiponectin signaling pathway in muscle and adipose tissue. *Obesity (Silver Spring)* **18**, 230–238.
18. Frémont L (2000) Biological effects of resveratrol. *Life Sci* **66**, 663–673.
19. Barger JL, Kayo T, Vann JM, *et al.* (2008) A low dose of dietary resveratrol partially mimics caloric restriction and retards aging parameters in mice. *PLoS One* **3**, e2264.
20. Oike H & Kobori M (2008) Resveratrol regulates circadian clock genes in Rat-1 fibroblast cells. *Biosci Biotechnol Biochem* **72**, 3038–3040.
21. Macarulla MT, Alberdi G, Gómez S, *et al.* (2009) Effects of different doses of resveratrol on body fat and serum parameters in rats fed a hypercaloric diet. *J Physiol Biochem* **65**, 369–376.
22. Farnell YZ, Allen GC, Nahm SS, *et al.* (2008) Neonatal alcohol exposure differentially alters clock gene oscillations within the suprachiasmatic nucleus, cerebellum, and liver of adult rats. *Alcohol Clin Exp Res* **32**, 544–552.
23. Tosini G, Kasamatsu M & Sakamoto K (2007) Clock gene expression in the rat retina: effects of lighting conditions and photoreceptor degeneration. *Brain Res* **1159**, 134–140.
24. Orolin J, Vecera R, Markova I, *et al.* (2009) Differences in hepatic expression of genes involved in lipid homeostasis between hereditary hypertriglyceridemic rats and healthy Wistar rats and in their response to dietary cholesterol. *Food Chem Toxicol* **47**, 2624–2630.
25. Livak K & Schmittgen T (2001) Analysis of relative gene expression data using real-time quantitative PCR and the 2<sup>-</sup>(Delta Delta C(T)) method. *Methods* **25**, 402–408.
26. Miranda J, Churrua I, Fernández-Quintela A, *et al.* (2009) Weak effect of *trans*-10, *cis*-12-conjugated linoleic acid on body fat accumulation in adult hamsters. *Br J Nutr* **102**, 1583–1589.
27. Sukumaran S, Xue B, Jusko WJ, *et al.* (2010) Circadian variations in gene expression in rat abdominal adipose tissue and relationship to physiology. *Physiol Genomics* **42A**, 141–152.
28. Preitner N, Damiola F, Lopez-Molina L, *et al.* (2002) The orphan nuclear receptor REV-ERB $\alpha$  controls circadian

- transcription within the positive limb of the mammalian circadian oscillator. *Cell* **110**, 251–260.
29. Fontaine C, Dubois G, Duguay Y, *et al.* (2003) The orphan nuclear receptor Rev-Erbalpha is a peroxisome proliferator-activated receptor (PPAR) gamma target gene and promotes PPARgamma-induced adipocyte differentiation. *J Biol Chem* **278**, 37672–37680.
  30. Tchoukalova YD, Fitch M, Rogers PM, *et al.* (2012) *In vivo* adipogenesis in rats measured by cell kinetics in adipocytes and plastic-adherent stroma-vascular cells in response to high-fat diet and thiazolidinedione. *Diabetes* **61**, 137–144.
  31. Le Martelot G, Claudel T, Gatfield D, *et al.* (2009) REV-ERB-alpha participates in circadian SREBP signaling and bile acid homeostasis. *PLoS Biol* **7**, e1000181.
  32. Amemiya-Kudo M, Shimano H, Hasty A, *et al.* (2002) Transcriptional activities of nuclear SREBP-1a, -1c, and -2 to different target promoters of lipogenic and cholesterologenic genes. *J Lipid Res* **43**, 1220–1235.