

Reading the Isotopic Clocks.

Your research in age determination and stable isotopes requires reliable data and custom service. Teledyne Isotopes has the expertise and experience to meet these requirements.

We have been pioneers in the industry since 1955 and are the only commercial laboratory that offers all major age determination techniques.

These include:

Radiocarbon

Stable isotopes: $^{13}\text{C}/^{12}\text{C}$ • $^{18}\text{O}/^{16}\text{O}$ • H/D
K/Ar • Rb/Sr • U/Pb • Pb/Pb

We can assure you of reliable data because of well-staffed and well-equipped labs, intercalibration with major universities and government facilities, and through use of N.B.S. and international standards.

For the most reliable reading of the isotopic clocks, come to the experts.

 **TELEDYNE ISOTOPES**

50 Van Buren Avenue
Westwood, NJ 07675
201/664-7070
Tele: 134474



T I T L E S I N ARCHAEOLOGY

The Upper Paleolithic of the Central Russian Plain

Olga Soffer

University of Illinois, Urbana

"Soffer has clearly delineated many of the problems, and her work will surely influence the direction of investigation for years to come."

— R.S. Davis in SCIENCE

"... one of the best books of 1986."

— OMNI

In Paperback: \$24.95/ISBN: 0-12-654271-6

Casebound: \$49.95/ISBN: 0-12-654270-8

539 pages, 1985

Guilá Naquitz

Archaic Foraging and Early Agriculture in Oaxaca, Mexico

Edited by

Kent V. Flannery

University of Michigan, Ann Arbor

"This is must reading for all those interested in early moves toward an agricultural life."

— M.D. Coe in SCIENCE

CONTENTS (Section Headings): The Problem and the Model. The Cultural and Environmental Setting. Excavation and Artifact Analysis. Comparing the Archaic and Modern Environments. Analysis of Subsistence. Spatial Analysis of Living Floors. Simulating Foraging and Early Agriculture in Oaxaca. Summary and Conclusions. References. Index.

\$74.50/ISBN: 0-12-259830-X

538 pages, 1986

Working at Archaeology

Lewis R. Binford

University of New Mexico, Albuquerque

"Working at Archaeology is a handy source for some of the most important writings of Lewis R. Binford. Collectively, these papers furnish a new and powerful framework for explaining aspects of assemblage composition on a regional scale."

— AMERICAN ANTIQUITY

\$29.50/ISBN: 0-12-100060-5

463 pages, 1983

Radiocarbon Dating

An Archaeological Perspective

R.E. Taylor

University of California, Riverside

CONTENTS: Elements of the Radiocarbon Method. Definition of Major Anomalies. Samples and Sample Pretreatment. Measurement Techniques. Evaluation of Radiocarbon Data. Radiocarbon Dating in Historical Perspective. Index. Bibliography.

\$49.95 (tentative)/ISBN: 0-12-684860-2

214 pages, April 1987

The Horner Site

The Type Site of the Cody Cultural Complex

Edited by

George C. Frison

University of Wyoming, Laramie

Lawrence C. Todd

University of Denver, Colorado

CONTENTS: G. C. Frison, Introduction. W. R. Wedel, History of the Princeton and Smithsonian Investigations at the Horner Site. L. C. Todd, R. V. Witter, and G. C. Frison, Excavation and Documentation of the Princeton and Smithsonian Horner Site Assemblages. G. C. Frison, The University of Wyoming Investigations at the Horner Site. L. C. Todd, Taphonomy of the Horner II Bonebed. B. A. Bradley and G. C. Frison, Projectile Points and Specialized Bifaces from the Horner Site. G. C. Frison, The Tool Assemblage, Tool Use, Unfinished Bifaces, and Stone Flaking Material Sources for the Horner Site. J. Albanese, Geological Investigations. D. N. Walker, Horner Site Mammalian Local Fauna. R. G. Reider, Soil Formation and Paleoenvironmental Interpretation at the Horner Site, Park County, Wyoming. G. C. Frison, L. C. Todd, and B. A. Bradley, Summary and Concluding Remarks. Appendices. References. Index.

In preparation/ISBN: 0-12-268565-2

c. 584 pages, May 1987

Order from your local bookseller or directly from



ACADEMIC PRESS

Harcourt Brace Jovanovich, Publishers

Orlando, FL 32887-0510, U.S.A.

Call Toll Free 1-800-321-5068

Orlando San Diego New York Austin
Boston London Sydney Tokyo Toronto

Prices are subject to change without notice.

BC/IV — 12047

Prehistory of the Americas

Stuart J. Fiedel

Professor Fiedel introduces the development of the prehistoric cultures of North, Central, and South America from about 10,000 B.C. to A.D. 1530. Beginning with an examination of the archaeological evidence for the earliest human migration from Asia to the New World, he traces the rapid expansion of Paleo-Indian hunters; the adaptation of Archaic hunter-gatherers to village life; and the rise and fall of chiefdoms and states.
Cloth about \$49.50 Paper about \$14.95

Reading the Past

Current Approaches to Interpretation in Archaeology

Ian Hodder

Hodder argues that interpretation of meaning in archaeology depends on how one reconstructs the facts – adoptive, economic, and social – by which past societies are explained. Symbolism and ideology are discussed in relation to history and social practice, and general accounts are provided of systems theory in archaeology.

Cloth \$34.50 Paper \$9.95

The Origins and Development of the Andean State

Editors: Jonathan Haas, Shelia Pozorski, and Thomas Pozorski

The work of leading scholars actively engaged in fieldwork in Peru, this volume brings together recent research on the evolution of civilization in the Andean region of South America.

Contributors: Richard Daggett, Robert A. Feldman, Jonathan Haas, Charles M. Hastings, William H. Isbell, Alexandra Ulana Klymshyn, Carol J. Mackey, Betty J. Meggers, Thomas Pozorski, Shelia Pozorski, Katharina J. Schreiber, Izumi Shimada, John Topic, Theresa Topic, Malcolm C. Webb, David J. Wilson.

New Directions in Archaeology

About \$44.50

The Archaeology of Contextual Meanings

Editor: Ian Hodder

This companion volume to *Archaeology as Long-term History* focuses on the symbolism of artifacts. It both refines current theory and method relation to interpretation, and shows, by examples, how to conduct this sort of archaeological work.

Contributors: Sheena Crawford, Liv Gibbs, Ian Hodder, Robert Jameson, Nick Merriman, Keith Ray, Tony Sinclair, Marie Louise Sorenson, Timothy Taylor, Linda Therkorn, Sarah Williams.

New Directions in Archaeology

About \$39.50

Archaeology as Long Term History

Editor: Ian Hodder

This volume emphasizes the archaeological significance of historical method and philosophy. Drawing particularly on the work of R.G. Collingwood, the contributors show that the notion of "history seen from within" is a viable approach that can be applied in ethnoarchaeology and in both historic and prehistoric archaeology.

New Directions in Archaeology

About \$39.50

Documentary Archaeology in the New World

Editor: Mary C. Beaudry

Designed to appeal to a broad spectrum of archaeologists and historians, this book outlines a fresh approach to the archaeological study of the historic cultures of North America that places history alongside anthropology, cultural geography, and a whole range of cognate disciplines.

Contributors: Lawrence E. Babits, Mary C. Beaudry, Joanne Bowen, Kathleen Joan Bragdon, Marley R. Brown III, Julia B. Curtis, Henry Langhorne, Janet Long, George L. Miller, Henry M. Miller, Stephen Mrozowski, Fraser D. Neiman, Adrian Praetzellis, Peter R. Schmidt, Nancy S. Seasholes, Garry Wheeler Stone, Anne E. Yentsch.

New Directions in Archaeology

About \$44.50

At bookstores or order from

Cambridge University Press

32 East 57th Street, NY, NY 10022.

Cambridge toll-free numbers for orders only:

800-872-7423, outside NY state. 800-227-0247, NY State only.

MasterCard and Visa accepted.

PEOPLING OF THE AMERICAS PUBLICATIONS

Center for the Study of Early Man • Institute for Quaternary Studies
University of Maine

CURRENT RESEARCH IN THE PLEISTOCENE

Current Research in the Pleistocene is an annual journal focusing on the interdisciplinary topic of the peopling and environments of the Western Hemisphere before 10,000 yr. B.P. Specialists from all over the world submit short statements on their current research, new ideas, and newly completed projects. Because of the international scope of the topic, **CRP** will publish articles in languages other than English, together with an English translation.

Topics covered in **CRP** are archaeology, taphonomy (bone modification), physical anthropology, and paleoenvironments (plants, vertebrates, and geosciences). Starting with volume 3, each issue includes a special section of invited papers featuring a particular geographic region: volume 3, Asia, and volume 4, South America. A separate section lists recent relevant dissertations.

Collectively, these concise reports provide an overview of trends and developments in New World early human studies and allied fields, all in a single source. Although brief, the articles in **CRP** are referenced and frequently illustrated, and may be the only source of information available for many years about new sites and theories.

Approximately 140 pages per volume, reference maps, author and extensive subject indices.

Volume 1, 1984	\$ 5.00
Volumes 2 through 4	\$12.00 each
Outside North America, add \$6.00 per volume.	
Institutional, per volume worldwide —	\$15.00

BOOKS

Understanding Stone Tools: A Cognitive Approach by David E. Young and Robson Bonnichsen	\$ 27.00
Archaeological Sediments in Context Julie Stein and William R. Farrand, editors	\$ 19.00
Environments and Extinctions: Man in Late Glacial North America Jim I. Mead and David J. Meltzer, editors	\$ 22.00
New Evidence for the Pleistocene Peopling of the Americas Alan L. Bryan, editor	\$ 32.00
	<hr/>
	\$100.00

Now get all four books for only \$90.00
(\$130.00 outside North America)

Make checks payable to the Center for the Study of Early Man, 495 College Avenue, Orono, ME 04473. Maine residents add 5% state sales tax. Prices include shipping and handling and are subject to change without notice. All orders must be prepaid in U.S. funds. Allow 6-8 weeks for delivery.



From Texas

New and important books



ANCIENT CHALCATZINGO

Edited by DAVID C. GROVE

The most complete archaeological report yet published on a Formative period site in Mesoamerica, with 228 photographs, 243 drawings, 52 maps, 91 tables, and a wealth of data and insight. Providing a panorama of 3,000 years of cultural development, *Ancient Chalcatzingo* will quickly become a standard reference source and a major publication of its time. \$75.00 hardcover

STONE TOOL USE AT CERROS The Ethnoarchaeological and Use-Wear Evidence

By SUZANNE M. LEWENSTEIN

"... an outstanding piece of research. By no means is the application of this work limited to Cerros. Its major value is its application to use-wear analysis and to lithic research in complex societies." —HARRY J. SHAFER

"This will serve as a standard for years to come, both in terms of methodology and in substantive results." —PAYSON D. SHEETS

Profusely illustrated. \$42.50 hardcover (May publication)

NATIVE AMERICAN MATHEMATICS

Edited by MICHAEL P. CLOSS

The first book to focus on mathematical development indigenous to the New World. Spanning time from the prehistoric to the present, the thirteen essays attest to the variety of mathematical development present in the Americas. The data are drawn from diverse cultures and from multidisciplinary approaches. Heavily illustrated. \$35.00 hardcover

THE WAY OF THE DEAD INDIANS Guajiro Myths and Symbols

By MICHEL PERRIN

Translated by MICHAEL FINEBERG

"... strikingly demonstrates that a native society... may still be a treasure trove of knowledge which proves accessible to a meticulous and gifted observer... The Guajiro myths reveal an elaborate philosophy, the existence of which was entirely unknown." —CLAUDE LÉVI-STRAUSS

\$12.95 paperback \$30.00 hardcover

Write for a free catalog of books on anthropology, archaeology, and ethnology.



University of Texas Press

BOX 7819 AUSTIN, TEXAS 78713 (512) 471-4032

\$2 shipping
on all mail orders

The New Archaeology from Smithsonian Institution Press

Artifacts of the Spanish Colonies of Florida and the Caribbean, 1500–1800

**Volume I: Ceramics, Glassware,
and Beads**

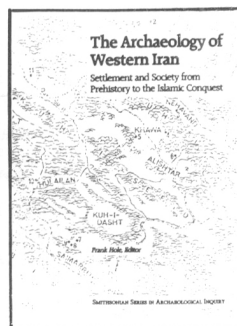
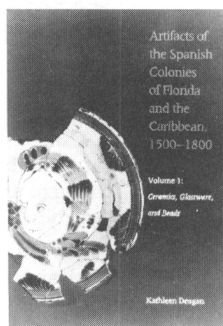
Kathleen Deagan

6 color, 114 b&w illus.

7 x 10 208 pp

Cloth: \$35.00 Paper: \$19.95

June 1987



The Archaeology of Western Iran

**Settlement and Society from
Prehistory to the Islamic
Conquest**

Frank Hole, editor

*First in the Smithsonian Series in
Archaeological Inquiry*

90 tables, 39 line drawings

8 1/2 x 11 406 pp.

Cloth: \$49.95 May 1987

Spring 1988 titles

Prehispanic Settlement Patterns in the Lower Santa Valley, Peru

David Wilson

Health, Disease, and Social Organization in the Moundville Community

Mary Lucas Powell

Mississippian Emergence The Evolution of Ranked Agricultural Societies in Eastern North America

Bruce D. Smith

The Recovery of Meaning Historical Archaeology in the Eastern United States

*Mark P. Leone and Parker B. Potter,
editors*

Being reprinted

The Peoples and Cultures of Ancient Peru

Luis G. Lumbreras



**Smithsonian Institution Press • P.O. Box 4866,
Hampden Station, Baltimore, MD 21211 • (301) 338-6963**

**53rd ANNUAL MEETING
SOCIETY FOR AMERICAN ARCHAEOLOGY**

Phoenix Hilton Hotel
Phoenix, Arizona

Wednesday, April 27–Sunday, May 1, 1988

Annual Meeting Chair: Sylvia W. Gaines, Department of Anthropology,
Arizona State University, Tempe, AZ 85287.

GUIDELINES FOR CONTRIBUTIONS

The privilege of participating in the annual meeting as a presenter, chair, or discussant is restricted to paid-up members. However, representatives of other disciplines or archaeologists who are not North American residents may request a waiver of this requirement.

Society policy states that a person may not deliver more than one paper although that person may, at the same meeting, chair a session or serve as junior author of a paper presented by someone else. *All* presenters, chairs, and discussants are required to pay the established registration fee for the annual meeting; registration fee must accompany the Contributor Index Form. The registration fee requirement may be waived upon written request only for reasons of hardship. Meeting registration fees will be refunded for any paper that is declined.

Complete symposia proposals (with abstracts of papers), abstracts of contributed papers, abstracts of research reports, and abstracts for poster sessions must reach the program chairperson no later than *October 1, 1987*. *All proposals and abstracts must be submitted on appropriate SAA forms*, which are mailed to all SAA members with the ballot. In cases of co-authorship of papers, only the *presenting* author (whether senior or junior author) need submit a Contributor Index Form. Additional forms may be obtained from the Society at its headquarters address.

Because it is no longer possible to accommodate all the individuals wishing to make presentations at the annual meeting, the Program Committee will evaluate each submission for professionalism and redundancy with other submissions. Symposia organizers and authors of contributed papers, research papers, and poster sessions will be notified of the Program Committee's decision to accept or decline the submission by January 15, 1988. Abstracts of all papers and research reports accepted for presentation will be published in the final program. Long abstracts are no longer required.

SYMPOSIA—A symposium consists of a group of papers on a common theme. The symposium topic and the individual papers within it will be reviewed. Changes, such as consolidation of two symposia or changes in the individual papers, may be recommended. Symposia organizers should contact the Program Chair no later than September 1, 1987 in order that the *Guidelines for Symposium Organizers* and a special symposium form can be sent to them. Complete symposia proposals must be submitted *as a package* by the symposium organizer(s) and must be received by *October 1, 1987*. The package must include for every paper presented in the symposium: 2 copies of the SAA Short Abstract Form, 2 copies of the SAA Contributor Index Form, and the meeting registration fee. (The symposium organizer should collect and submit all meeting registration fees for his or her symposium presenters.) The deadline for all submissions is *October 1, 1987*.

CONTRIBUTED PAPERS (20 minutes)—Contributed papers are to be distinguished from Research Reports in that they generalize, synthesize, or compare and are addressed to problems of theory, method, culture history, or culture process. Contributed papers must follow the same format as the symposia papers, and each proposed presentation must include: 2 copies of the SAA Short Abstract Form, 2 copies of the SAA Contributor Index Form, and the meeting registration fee.

RESEARCH REPORTS (10 minutes)—A research report is an oral presentation that describes the results of a recent field or laboratory research project. Each proposed presentation must include: 2 copies of the SAA Short Abstract Form, 2 copies of the SAA Contributor Index Form, and the meeting registration fee.

POSTER SESSION—Like the research report, the poster session is a description of the results of a recent field or laboratory research project. The poster session is especially appropriate for research results that can be described graphically better than verbally. Each proposed presentation must include: 2 copies of the SAA Short Abstract Form, 2 copies of the SAA Contributor Index Form, and the meeting registration fee.

Please follow these instructions carefully. Incorrect or late submissions can be considered only if space and time allow. All other scheduling and room requests for committee meetings, promotional booths, etc. should be directed to Jerome A. Miller, 1511 K St N.W. Suite 716, Washington, DC 20005.

CONTENTS

Editor's Corner	<i>Patty Jo Watson</i> 228
Uses of the Past: Archaeology in the Service of the State	<i>Don D. Fowler</i> 229
Surface Collection, Sampling, and Research Design: A Retrospective	<i>Charles L. Redman</i> 249
Conquest and Consolidation: A Comparison of the Wari and Inka Occupations of a Highland Peruvian Valley	<i>Katharina J. Schreiber</i> 266
A Postulated Tsunami and Its Effects on Cultural Development in the Peruvian Early Horizon	<i>Robert McK. Bird</i> 285
Application of Allometry to Zooarchaeology	<i>Elizabeth J. Reitz, Irvy R. Quitmyer, H. Stephen Hale, Sylvia J. Scudder, and Elizabeth S. Wing</i> 304
REPORTS	
Recognition of Bituminous Coal Contaminants in Radiocarbon Samples	<i>Kenneth B. Tankersley, Cheryl Ann Munson, and Donald Smith</i> 318
The Siphon Technique: An Addition to the Flotation Process	<i>George Gumerman, IV and Bruce J. Umemoto</i> 330
Defining and Measuring Midden Catchment Intimachay: A December Solstice Observatory at Machu Picchu, Peru	<i>James L. Boone, III</i> 336 <i>David S. P. Dearborn, Katharina J. Schreiber, and Raymond E. White</i> 346
Evidence for Early Maize (<i>Zea mays</i>) from the Icehouse Bottom Site, Tennessee	<i>Jefferson Chapman and Gary D. Crites</i> 352
Domesticated Chenopodium in Prehistoric Eastern North America: New Accelerator Dates from Eastern Kentucky	<i>Bruce D. Smith and C. Wesley Cowan</i> 355
New Evidence Concerning the Chronology and Paleoethnobotany of Salts Cave, Kentucky	<i>Paul S. Gardner</i> 358
Linguistic Divergence and the Collapse of Preclassic Civilization in Southern Mesoamerica	<i>Bruce H. Dahlin, Robin Quizar, and Andrea Dahlin</i> 367
Precolumbian Animal Domesticates from Salango, Ecuador	<i>Peter W. Stahl and Presley Norton</i> 382
COMMENTS	
Additional Information on Split-Twig and Other Willow Figurines from the Greater Southwest	<i>Stephen C. Jett</i> 392
Comment on Oneota Ridged Field Agriculture in Southwestern Wisconsin	<i>David F. Overstreet</i> 396
Floodplain Agriculture in the Driftless Area: A Reply to Overstreet	<i>James P. Gallagher, Robert F. Boszhardt, Robert F. Sasso, and Katherine Stevenson</i> 398
CURRENT RESEARCH, edited by Lynne Goldstein	
Far North, California and the Great Basin	405
REVIEWS AND BOOK NOTES, edited by Jerald T. Milanich	413