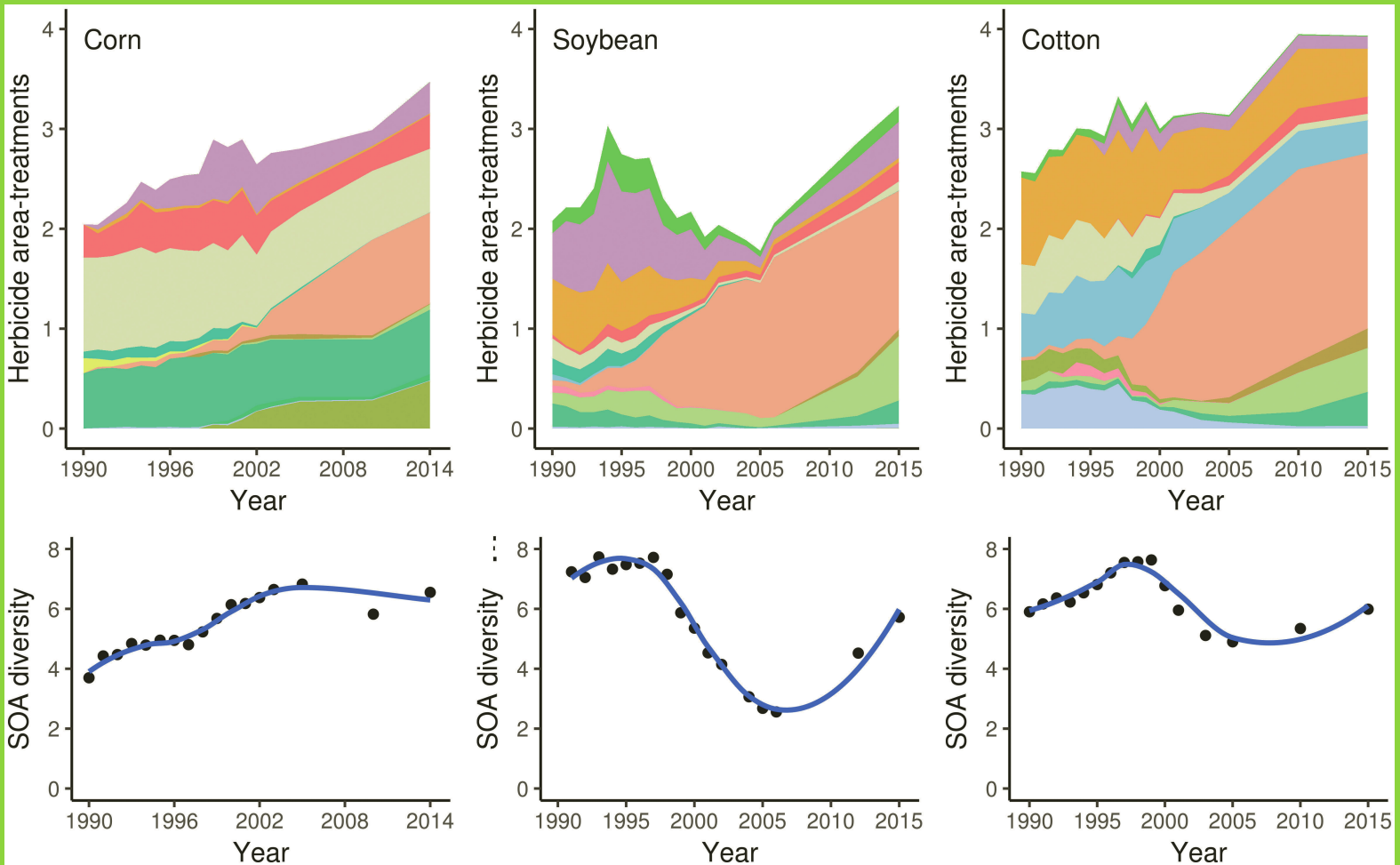


# WEED SCIENCE



# WEED SCIENCE

*Published six times a year by the Weed Science Society of America*

William K. Vencill, *Editor*

The Weed Science Society of America publishes original research and scholarship in the form of peer-reviewed articles in three international journals. *Weed Science* is focused on understanding “why” phenomena occur in agricultural crops. As such, it focuses on fundamental research directly related to all aspects of weed science in agricultural systems. *Weed Technology* focuses on understanding “how” weeds are managed. As such, it is focused on more applied aspects concerning the management of weeds in agricultural systems. *Invasive Plant Science and Management* is a broad-based journal that focuses not only on fundamental and applied research on invasive plant biology, ecology, management, and restoration of invaded non-crop areas, but also on the many other aspects relevant to invasive species, including educational activities, policy issues, and case study reports. Topics for *Weed Science* include the biology and ecology of weeds in agricultural, forestry, aquatic, turf, recreational, rights-of-ways, and other settings; genetics of weeds and herbicide resistance; chemistry, biochemistry, physiology and molecular action of herbicides and plant growth regulators used to manage undesirable vegetation, and herbicide resistance; ecology of cropping and non-cropping systems as it relates to weed management; biological and ecological aspects of weed control tools including biological agents, herbicide resistant crops, etc.; effects of weed management on soil, air, and water. Symposia papers and reviews are accepted. Consult the editor for additional information.

## Associate Editors (Assignment Year)

**Muthukumar V Bagavathiannan**, Texas A&M, College Station, TX 77843 (2015)  
**Carlene Chase**, Horticultural Sciences Department, University of Florida, Gainesville, FL 32611 (2016)  
**Bhagirath Singh Chauhan**, Queensland Alliance for Agriculture and Food Innovation (QAAFI), The University of Queensland, Queensland, Australia (2014)  
**Sharon Clay**, South Dakota State University Plant Science Department, Brookings, SD 57007 (2002)  
**Adam Davis**, USDA-ARS, Global Change and Photosynthesis Research, Urbana, IL 61801 (2007)  
**Franck E. Dayan**, USDA-ARS-NPURU, National Center for Natural Products Research, University, MS 38677 (2003)  
**Anita Dille**, Kansas State University, Department of Agronomy, Manhattan, KS 66506 (2013)  
**Timothy Grey**, Department of Crop and Soil Science, University of Georgia, Tifton, GA 31793 (2009)  
**Marie Jasieniuk**, Department of Plant Sciences, University of California, Davis, CA 95616 (2016)  
**Prashant Jha**, Montana State University, Bozeman, MT 59717 (2017)  
**Ramon Leon**, West Florida Research and Education Center, University of Florida, Jay, FL 32565 (2016)  
**John L. Lindquist**, Department of Agronomy, University of Nebraska, Lincoln, NE 68583-0817 (2002)  
**Vijay Nandula**, Mississippi State University, Delta Research & Extension Center, Stoneville, MS 38776 (2008)  
**Chris Preston**, Australian Weed Management, University of Adelaide, PMB1, Glen Osmond, SA 5064, Australia (2003)  
**Neha Rana**, Monsanto, Chesterfield, MO 63005 (2017)  
**Dean Riechers**, Department of Crop Sciences, University of Illinois, Urbana, IL 61801 (2011)  
**Hilary Sandler**, University of Massachusetts–Amherst Cranberry Station, East Wareham, MA 02538 (2008)  
**Steven Seefeldt**, USDA-ARS, University of Alaska, Fairbanks, AK 99775 (2011)  
**Patrick J. Tranel**, Department of Crop Sciences, University of Illinois, 360 ERML, Urbana, IL 61801 (2002)  
**Martin M. Williams II**, USDA-ARS Global Change and Photosynthesis Research, Urbana, IL 61801 (2008)  
Tracy Candelaria, *Managing Editor*

## Officers of the Weed Science Society of America

Scott Senseman, <i>President</i>	Darrin Dodds, <i>Secretary</i>
Larry Steckel, <i>President-Elect</i>	Phil Banks, <i>Treasurer</i>
William Curran, <i>Vice President</i>	Sarah Ward, <i>Director of Publications</i>
Janis McFarland, <i>Past President</i>	Mark Bernards, <i>Chair, Constitution and Operating Procedures</i>

*Weed Science* (ISSN 0043-1745) is an official publication of the Weed Science Society of America, 12011 Tejon Street, Suite 700, Westminster, CO 80234 (720-977-7940). It contains refereed papers describing the results of research that elucidates the nature of phenomena relating to all aspects of weeds and their control. It is published bimonthly, one volume per year, six issues per year beginning in January.

Membership includes online access to *Weed Science*, *Weed Technology*, *Invasive Plant Science and Management*, and the online *WSSA Newsletter*. Dues should be sent to WSSA, 12011 Tejon Street, Suite 700, Westminster, CO 80234 no later than December 1 of each year. Membership in the society is on a calendar-year basis only.

New subscriptions and renewals begin with the first issue of the current volume. Please visit the *Weed Science* subscription page at <https://www.cambridge.org/core/journals/weed-science/subscribe>; Email: [subscriptions\\_newyork@cambridge.org](mailto:subscriptions_newyork@cambridge.org) in USA, [journals@cambridge.org](mailto:journals@cambridge.org) outside USA.

*Weed Science* publishes six times a year in January, March, May, July, September, and November. Annual institutional electronic subscription rates: US \$431.00; UK £300.00.

Please use Editorial Manager to access manuscript submissions (<http://www.editorialmanager.com/ws>). Authors are asked to pay \$65 per page as a portion of the cost of publication, plus an additional processing charge of \$55 per manuscript if none of the authors are WSSA members. The Editor can make exceptions in advance when justified.

The Weed Science Society of America fully subscribes to the belief that progress in science depends upon the sharing of ideas, information, and materials among qualified investigators. Authors of papers published in *Weed Science* are therefore encouraged, whenever practicable and when state and federal laws permit, to share genotypically unique, propagative materials they might possess with other workers in the area who request such materials for the purpose of scientific research.

*Weed Science* published by the Weed Science Society of America.  
Copyright 2018 by the Weed Science Society of America.  
All rights reserved. Reproduction in part or whole prohibited.

### On the Cover:

Images show herbicide use and diversity of herbicide sites of action in major row crops in the United States. Image by Andrew Kniss.

# WEED SCIENCE

Journal of the Weed Science Society of America

Volume 66 Number 2 March–April 2018

## PHYSIOLOGY/CHEMISTRY/BIOCHEMISTRY

- A Statewide Survey of PPO-Inhibitor Resistance and the Prevalent Target-Site Mechanisms in Palmer amaranth (*Amaranthus palmeri*) Accessions from Arkansas. *Vijay K. Varanasi, Chad Brabham, Jason K. Norsworthy, Haozhen Nie, Bryan G. Young, Michael Houston, Tom Barber, and Robert C. Scott* ..... 149
- Reduced Translocation Is Associated with Antagonism of Glyphosate by Glufosinate in Giant Foxtail (*Setaria faberi*) and Velvetleaf (*Abutilon theophrasti*). *Thierry E. Besançon, Donald Penner, and Wesley J. Everman* ..... 159

## WEED BIOLOGY AND ECOLOGY

- Variation in Response and Resistance to Glyphosate and Glufosinate in California Populations of Italian Ryegrass (*Lolium perenne* ssp. *multiflorum*). *Elizabeth Karn, Roland Beffa, and Marie Jasieniuk* ..... 168
- Evolutionary Adaptations of Palmer Amaranth (*Amaranthus palmeri*) to Nitrogen Fertilization and Crop Rotation History Affect Morphology and Nutrient-Use Efficiency. *Washington Bravo, Ramon G. Leon, Jason A. Ferrell, Michael J. Mulvaney, and C. Wesley Wood* ..... 180
- Seed Longevity and Dormancy State Suggest Management Strategies for Garlic Mustard (*Alliaria petiolata*) and Japanese Stiltgrass (*Microstegium vimineum*) in Deciduous Forest Sites. *Mame E. Redwood, Glenn R. Matlack, and Cynthia D. Huebner* ..... 190
- Seed Dormancy and Seed Morphology Related to Weed Susceptibility to Biofumigation. *Maxime Lefebvre, Maryse L. Leblanc, and Alan K. Watson* ..... 199
- Effect of Rhizome Fragmentation, Clover Competition, Shoot-Cutting Frequency, and Cutting Height on Quackgrass (*Elymus repens*). *Dorothee Kolberg, Lars Olav Brandsæter, Göran Bergkvist, Knut Asbjørn Solhaug, Bo Melander, and Björn Ringselle* ..... 215
- Control Recommendations for Black Medic (*Medicago lupulina*) Based on Growth and Development in Competition with Strawberry. *Shaun M. Sharpe, Nathan S. Boyd, Peter J. Dittmar, Greg E. MacDonald, Rebecca L. Darnell, and Jason A. Ferrell* ..... 226
- Target and Non-target site Mechanisms Confer Resistance to Glyphosate in Canadian Accessions of *Conyza canadensis*. *Eric R. Page, Christopher M. Grainger, Martin Laforest, Robert E. Nurse, Istvan Rajcan, Jichul Bae, and François J. Tardif* ..... 234

## WEED MANAGEMENT

- Target-Site Point Mutation Conferring Resistance to Trifluralin in Rigid Ryegrass (*Lolium rigidum*). *Benjamin Fleet, Jenna Malone, Christopher Preston, and Gurjeet Gill* ..... 246
- Effect of Fumigation with 1,3-Dichloropropene and Chloropicrin on Fomesafen Dissipation in Eggplant Plasticulture Production. *Thomas V. Reed, Nathan S. Boyd, P. Christopher Wilson, and Peter J. Dittmar* ..... 254
- Genetically Engineered Herbicide-Resistant Crops and Herbicide-Resistant Weed Evolution in the United States. *Andrew R. Kniss* ..... 260