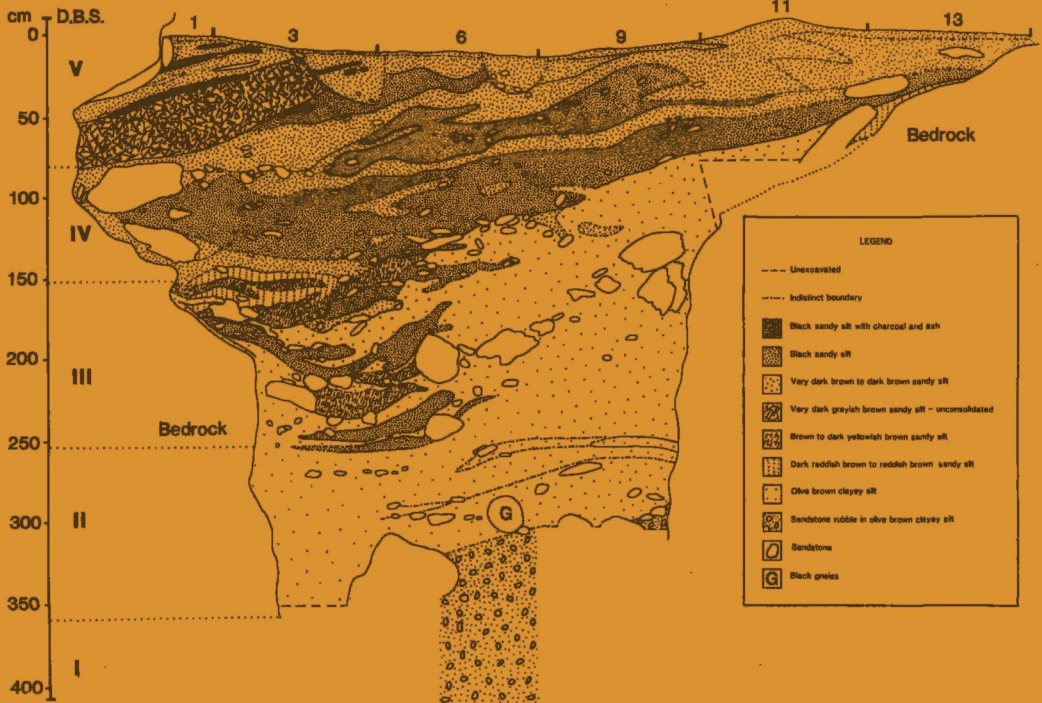


ZONES

UNITS



AMERICAN ANTIQUITY

JOURNAL OF THE SOCIETY FOR AMERICAN ARCHAEOLOGY

VOLUME 53 NUMBER 2

APRIL 1988

OFFICERS OF THE SOCIETY FOR AMERICAN ARCHAEOLOGY

- President:* DENA DINCAUZE, Department of Anthropology, University of Massachusetts, Amherst, MA 01003.
- President-elect:* JEREMY A. SABLOFF, Department of Anthropology, University of Pittsburgh, Pittsburgh, PA 15260.
- Secretary:* BRUCE D. SMITH, Department of Anthropology, National Museum of Natural History, Smithsonian Institution, Washington, DC 20560.
- Secretary-elect:* LYNNE GOLDSTEIN, Department of Anthropology, University of Wisconsin, Milwaukee, WI 53201
- Treasurer:* ROBERT J. SHARER, Department of Anthropology, University Museum, University of Pennsylvania, Philadelphia, PA 19104.
- Editor:* W. RAYMOND WOOD, Department of Anthropology, University of Missouri, Columbia, MO 65211.
- Executive Committee Members:* KATHLEEN A. DEAGAN, Florida State Museum, Department of Anthropology, Gainesville, FL 32611; J. JEFFERSON REID, Department of Anthropology, University of Arizona, Tucson, AZ 85721; NAN A. ROTHSCHILD, Department of Anthropology, Barnard College, 606 West 120th Street, New York, NY 10027; DAVID HURST THOMAS, Department of Anthropology, American Museum of Natural History, Central Park W. at 79th St., New York, NY 10024.
- Executive Director:* JEROME A. MILLER, Society for American Archaeology, 808 17th St., N.W., Suite 200, Washington, DC 20006.

EDITORIAL STAFF OF AMERICAN ANTIQUITY

- Editor:* W. RAYMOND WOOD, Department of Anthropology, University of Missouri, Columbia, MO 65211.
- Associate Editor:* MICHAEL J. O'BRIEN, Department of Anthropology, University of Missouri, Columbia, MO 65211.
- Associate Editor for Reviews and Book Notes:* SUSAN C. VEHIK, Department of Anthropology, University of Oklahoma, Norman, OK 73019.
- Associate Editor for Current Research:* THOMAS F. LYNCH, Department of Anthropology, Cornell University, Ithaca, NY 14853.
- Associate Editor for Obituaries:* LARRY J. ZIMMERMAN, Department of Social Behavior, University of South Dakota, Vermillion, SD 57069.
- Consulting Editor for Mathematics and Statistics:* STEPHEN E. PLOG, Department of Anthropology, University of Virginia, Charlottesville, VA 22903.
- Assistant Editor:* TERESITA MAJEWSKI.
- Editorial Assistants:* BARBARA E. BARMAN and CHRISTOPHER B. PULLIAM.

AMERICAN ANTIQUITY (ISSN 0002-7316) is published quarterly in January, April, July, and October. Subscription is by membership in the Society for American Archaeology, 808 17th St., N.W., Suite 200, Washington, DC 20006. Annual dues for individual U.S. and Canadian members are \$50.00, institutional subscribers \$75.00, students and retired (over 65), \$25.00, foreign members \$40.00. Annual membership dues include \$25.00 for the subscription to *American Antiquity*. Spouses of members are eligible for joint memberships at \$10.00 per year (subscription not included). *American Antiquity* is not available for exchange. Address requests for individual or institutional memberships, instructions for changes of address, and orders for back issues to: Society for American Archaeology, 808 17th St., N.W., Suite 200, Washington, DC 20006. Claims for non-receipt and for damaged copies must be made within 90 days (U.S.) or 180 days (non-U.S.) of the publication date for free replacement. Non-U.S. deliveries cannot be guaranteed; non-U.S. members and subscribers may purchase replacement copies at a 20% discount. *American Antiquity* is printed at The Allen Press, Lawrence, Kansas 66044.

Second class postage paid at Washington, DC and additional mailing offices. POSTMASTER: Send address changes to *American Antiquity*, % Society for American Archaeology, 808 17th St., N.W., Suite 200, Washington, DC 20006.

NOTICE TO AUTHORS

American Antiquity publishes papers on the archaeology of the Western hemisphere and closely related subjects. Material for the Articles, Reports, Forum, and Comments sections should be submitted to the Editor, publications for review to the Associate Editor for Reviews and Book Notes, and information for Current Research to the Associate Editor for Current Research. **Authors should submit an original and two copies of their manuscripts. A detailed guide to stylistic and technical matters of manuscript preparation appeared in April, 1983 (vol. 48, no. 2).**

AMERICAN ANTIQUITY

VOLUME 53 NUMBER 2

APRIL 1988

W. Raymond Wood, *Editor*

Associate Editors: Susan C. Vehik (*Reviews and Book Notes*),
Thomas F. Lynch (*Current Research*), Larry J. Zimmerman (*Obituaries*)
and Michael J. O'Brien

Assistant Editor: Teresita Majewski

Editorial Assistants: Barbara E. Barman and Christopher B. Pulliam

CONTENTS

OBITUARY

Roy Selman Dickens, Jr., 1938–1986 *H. Trawick Ward and R. P. Stephen Davis, Jr.* 227

ARTICLES

- Coming into the Country: Early Paleoindian
Hunting and Mobility *Robert L. Kelly and Lawrence C. Todd* 231
- Archaeological Visibility and the
Underclass of Southwestern Prehistory *Steadman Upham* 245
- Early Archaic Settlement in the
Southeastern United States: A Case
Study from the Savannah River Valley *David G. Anderson and Glen T. Hanson* 262
- Myth, Environment, and the Orientation
of the Templo Mayor of Tenochtitlan *A. F. Aveni, E. E. Calnek, and H. Hartung* 287

REPORTS

- The Treatment of Human Remains on
Navajo Lands *Anthony L. Klesert and Michael J. Andrews* 310
- Stable Carbon- and Nitrogen-Isotope
Ratios of Bone Collagen Used to
Study Coral-Reef and Terrestrial
Components of Prehistoric Bahamian Diet *William F. Keegan and Michael J. DeNiro* 320
- Content, Provenience, and Significance
of the *Codex Vergara* and the *Código de
Santa María Asunción* *Barbara J. Williams and H. R. Harvey* 337
Olivier de Montmollin 351
- Tenam Rosario—A Political Microcosm
The Paleoindian Component at Charlie
Lake Cave (HbRf 39), British Columbia *Knut R. Fladmark, Jonathan C. Driver,
and Diana Alexander* 371

ADDENDUM

Sharon L. Brock 385

COMMENTS

- A Phonetic Version of the Maya Glyph for North *Michael P. Closs* 386
- A Phonetic Glyph for Zenith: Reply to Closs *Victoria R. Bricker* 394

American Antiquity is indexed in the *Social Sciences and Humanities Index* and in *Anthropological Literature*. Articles appearing in this journal are annotated and indexed in *Historical Abstracts* and in *American History and Life*.

Copyright © 1988 by the Society for American Archaeology. All rights reserved.

ISSN 0002-7316

Reply to: A Phonetic Version of the Maya Glyph for North	<i>Clemency Chase Coggins</i>	401
Response to Coggins and Bricker	<i>Michael P. Closs</i>	402
CURRENT RESEARCH, edited by Thomas F. Lynch		
Far North, Northwest, California and the Great Basin		412
REVIEWS AND BOOK NOTES, edited by Susan C. Vehik		
Reviews		
Plew, Woods, and Pavesic (editors): Stone Tool Analysis: Essays in Honor of Don E. Crabtree	<i>Stanley A. Ahler</i>	425
Akazawa and Aikens (editors): Prehistoric Hunter- Gatherers in Japan: New Research Methods	<i>Peter Bleed</i>	426
Mead and Meltzer (editors): Environments and Extinctions: Man in Late Glacial North America	<i>Peter T. Bobrowsky</i>	427
Parsons: The Origins of Maya Art: Monumental Stone Sculpture of Kaminaljuyú, Guatemala, and the Southern Pacific Coast	<i>Clemency Chase Coggins</i>	428
Renfrew and Cherry (editors): Peer Polity Interaction and Socio-Political Change	<i>Carole L. Crumley</i>	429
Ballereau, Niemeyer F., and Pizarro W.: Les Gravures Rupestres de la Quebrada las Pintadas de Marquesa (Norte Chico, Chile)	<i>Tom D. Dillehay</i>	430
Meltzer, Fowler, and Sabloff (editors): American Archaeology Past and Future: A Celebration of the Society for American Archaeology 1935–1985	<i>Gary M. Feinman</i>	431
Rapp and Gifford (editors): Archaeological Geology	<i>C. Reid Ferring</i>	433
Schiffer (editor): Advances in Archaeological Method and Theory, Vol. 9	<i>Ronald Hicks</i>	435
Jenkins and Krause: The Tombigbee Watershed in Southeastern Prehistory	<i>Timothy A. Kohler</i>	436
Silver: Economic Structures of the Ancient Near East	<i>C. C. Lamberg-Karlovsky</i>	437
Ebeling: Handbook of Indian Foods and Fibers of Arid America	<i>Paul E. Minnis</i>	438
Book Notes		
The George Reeves Site (11-S-650); Excavations at Tepe Yahya, Iran 1967–1975; The Early Periods; Economy and Interaction along the Lower Chaco River: The Navajo Mine Archeological Program, Mining Area III, San Juan County, New Mexico; Contributions to Ozark Prehistory; Archaeological Parks: Integrating Preservation, Interpretation, and Recreation; Proceedings of the Sixteenth Conference on Underwater Archaeology; Paleolithic Archaeology in Iran; Ceramic Decoration and Social Organization, Regional Variations Seen in Material from South Swedish Passage-Graves; Pinson Mounds: A Middle Woodland Ceremonial Center; Guide to Fossil Man		438

The cover illustration is taken from Figure 3 in the Report by Knut R. Fladmark, Jonathan C. Driver, and Diana Alexander.
