

PUBLISHED FOR THE SOCIETY BY SLACK INCORPORATED

INFECTION CONTROL AND HOSPITAL EPIDEMIOLOGYTM

EDITORIAL

Volume 25: An Important Milestone Despite Continuing Infection Control Challenges

BARRY M. FARR, MD, MSc

7

ORIGINAL ARTICLES

An Insidious Nosocomial Outbreak Due to *Salmonella enteritidis*

CRISTINA GUALLAR, MD; JAVIER ARIZA, MD; M^a ANGELES DOMINGUEZ, MD; CARMEN PEÑA, MD; IMMA GRAU, MD; R. VERDAGUER, MD; LLUM TORRENS, RN; FRANCISCO GUDIOL, MD

10

Knowledge, Attitudes, and Practices of Food Service Staff Regarding Food Hygiene in Shiraz, Iran

MEHRDAD ASKARIAN, MD, MPH; GHOLAMHOSEIN KABIR, PhD; MARIA AMINBAIG, MD; ZIAD A. MEMISH, MD, CIC, FACP, FRCPC, FIDSA; PEYMAN JAFARI, MSc

16

Does the Architecture of Hospital Facilities Influence Nosocomial Infection Rates? A Systematic Review

M. DETTENKOFER, MD; S. SEEGER, MD; G. ANTES, PHD; E. MOTSCHALL; M. SCHUMACHER, PHD; F. D. DASCHNER, MD

21

Preliminary Results for a New Final Package Test to Assess the Quality of Sterile Package Systems

HARTMUT DUNKELBERG, MD; SILKE WEDEKIND, MS

26

Injection Practices in Romania: Progress and Challenges

CATHERINE DENTINGER, FNP, MS; LILI PASAT, MD; MIRCEA POPA, MD, PhD; YVAN J. F. HUTIN, MD, MSc; ERIC E. MAST, MD, MPH

30

Infection Control Programs in Italian Hospitals

MARIA LUISA MORO, MD; NICOLA PETROSILLO, MD; CLAUDIA GANDIN, MD; ANTONINO BELLA

36

An Approach to the Study of Potentially Preventable Nosocomial Infections

JOSÉ ROSSELLÓ-URGELL, MD, PhD; JOSEP VAQUÉ-RAFART, MD, PhD; EDUARDO HERMOSILLA-PÉREZ; ALEJANDRO ALLEPUZ-PALAU, MD; THE EPINE WORKING GROUP

41

Effect of Education and Performance Feedback on Rates of Catheter-Associated Urinary Tract Infection in Intensive Care Units in Argentina

VICTOR DANIEL ROSENTHAL, MD, MSc, CIC; SANDRA GUZMAN, RN, ICP; NASIA SAFDAR, MD

47

Footwear Exchange Has No Influence on the Incidence of Febrile Neutropenia in Patients Undergoing Chemotherapy for Hematologic Malignancies

HIROYUKI SUGAHARA, MD, PhD; MASAO MIZUKI, MD, PhD; SAYOKO MATSUMAE, RN; YOSHIKO NABETANI, RN; MOTOKO KIKUCHI, RN; YUZURU KANAKURA, MD, PhD

51

Serial Nosocomial Transmission of *Plasmodium falciparum* Malaria From Patient to Nurse to Patient

RICHARD L. ALWEIS, MD; KERRIE DiROSARIO, RN, CIC; GIUSEPPE CONIDI, MPH; KEVIN C. KAIN, MD; RICHARD OLANS, MD; JOHN L. TULLY, MD

55

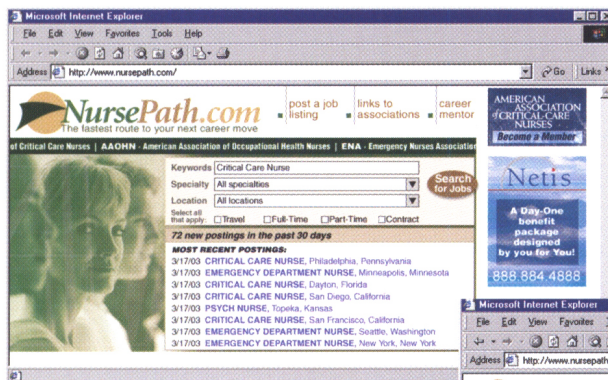
Susceptibilities of *Candida* Species to Amphotericin B and Fluconazole: The Emergence of Fluconazole Resistance in *Candida tropicalis*

YUN-LIANG YANG, PhD; YONG-AN HO, BSc; HSIAO-HSU CHENG, BSc; MONTO HO, MD; HSIU-JUNG LO, PhD

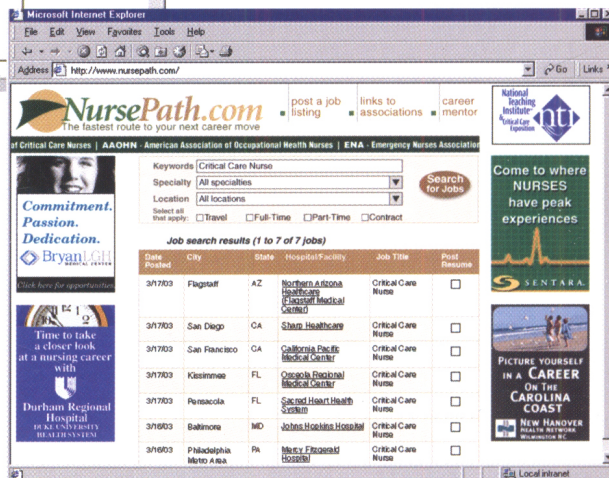
60

Continued inside.

**Step 1:
Log On.**



**Step 2:
See Jobs.**



**Step 3:
Get Job.**

It's that easy!

NursePath.com
The fastest route to your next career move

- Daily job postings on the home page
- Search hundreds of jobs by title, location or hospital/facility
- Choose from the best career opportunities in nursing



Brought to you by

AMERICAN ASSOCIATION OF CRITICAL-CARE NURSES

JOURNAL OF Psychosocial Nursing AND MENTAL HEALTH SERVICES

JOURNAL OF NURSING EDUCATION

The Journal of Continuing Education in Nursing

JOURNAL OF GERONTOLOGICAL NURSING

The Official Journal of The Society for Healthcare Epidemiology of America INFECTION CONTROL AND HOSPITAL EPIDEMIOLOGY

INFECTION CONTROL AND HOSPITAL EPIDEMIOLOGY™

CONTENTS

Continued from cover

ORIGINAL ARTICLE

Genetic Analysis of *Pseudomonas aeruginosa* by Enterobacterial Repetitive Intergenic Consensus Polymerase Chain Reaction (PCR) and Arbitrarily Primed PCR: Gel Analysis Compared With Microchip Gel Electrophoresis

ROUDABEH J. JAMASBI, PHD; STEPHEN J. KENNEL, PHD; LARRY C. WATERS, PHD; LINDA J. FOOTE, BS;
J. MICHAEL RAMSEY, PHD

65

TOPICS IN LONG-TERM CARE

Performance Improvement in the Long-Term-Care Setting: Building on the Foundation of Infection Control

KURT B. STEVENSON, MD, MPH; MARK LOEB, MD, MSC

72

CONCISE COMMUNICATIONS

Independent Prognostic Factors for Fatality in Patients With Urinary Tract Infection Caused by *Serratia marcescens*

JIEN-WEI LIU, MD; YU-MAI HSU, RN; YEN-FEN HUANG, RN

80

Clinical and Microbiological Profile of Urinary Tract Infection at a Tertiary-Care Center in Lebanon

ROULA FADEL, PHARM D; GHENWA K. DAKDOUKI, MD; ZEINA A. KANAFANI, MD; GEORGE F. ARAJ, PHD; SOUHA S. KANJ, MD

82

Multicenter Study of the Prevalence of Nosocomial Infections in Italian Hospitals

CARLO DI PIETRANTONJ, MSC; LORENZA FERRARA, MD; G. LOMOLINO, MD

85

LETTER TO THE EDITOR

***Pasteurella multocida* Peritonitis: Another Risk of Animal-Assisted Therapy**

JOHN SILLERY; JAMES HARGREAVES, DO; PHILIP MARIN, MD; EDGAR LERMA, MD; CATHY KUZNIA, SM (ASCP);
CLAUDETTE ABBE, MT (ASCP)

5

Full-text articles available online at ICHEJournal.com

THE PUBLICATION OF ADVERTISING IN THE JOURNAL DOES NOT CONSTITUTE ANY GUARANTEE OR ENDORSEMENT BY THE SOCIETY FOR HEALTHCARE EPIDEMIOLOGY OF AMERICA OR SLACK INCORPORATED OF THE ADVERTISED PRODUCT OR SERVICE OR OF CLAIMS MADE BY THE ADVERTISER. THE PUBLICATION OF ARTICLES AND OTHER EDITORIAL MATERIAL IN THE JOURNAL DOES NOT NECESSARILY REPRESENT THE POLICY RECOMMENDATIONS OR ENDORSEMENT BY THE SOCIETY.

PUBLISHER: Infection Control and Hospital Epidemiology (ISSN-0195-9417, Canadian GST#129780466) is published exclusively by SLACK Incorporated 12 times a year. Address: 6900 Grove Road, Thorofare, NJ 08086. Telephone: (856) 848-1000.

SHEA: 19 Mantua Rd., Mt. Royal, NJ 08061; telephone, 856-423-0087; fax, 856-423-3420; e-mail address, sheahq@talley.com.

COPYRIGHT 2004 The Society for Healthcare Epidemiology of America, Inc., and SLACK Incorporated. All rights reserved. No part of this publication may be reproduced without written permission from the publisher. Printed in the USA.

SUBSCRIPTIONS: Requests should be addressed to the publisher (except Japan). In Japan, contact Woodbell Incorporated, 4-22-11, Kitakasai, Edogawaku, Tokyo 134, Japan. Subscription rates in the United States and possessions: Individual: One year-\$139.00; Two years-\$199.00; Three years-\$259.00; Institutional: One year-\$269.00; Two years-\$459.00; Three years-\$639.00. Fellows: \$54.50 per year with proof of training status. Canada: add 7% Goods & Services tax; Overseas: add \$49.00 each year for delivery by air service. Single copies of current issues may be obtained for \$24.00.

INSTRUCTIONS TO AUTHORS: Authors may submit manuscripts prepared in accordance with the 2001 revision of the "Uniform Requirements for Manuscripts Submitted to Biomedical Journals." A digital version is available at www.icmje.org. Submit to RapidReview.com. All submissions must be accompanied by copyright form(s) signed by all authors.

REPRINTS: All requests to reprint or use material published herein should be addressed to John Kain, SLACK Incorporated, 6900 Grove Road, Thorofare, NJ 08086. For reprint orders and prices, contact John Kain at (856) 848-1000. Authorization to photocopy items for internal or personal use, or the internal or personal use of specific clients, is granted by SLACK Incorporated, provided that the base fee of \$1.00 per copy, plus \$.20 per page is paid directly to Copyright Clearance Center, 222 Rosewood Drive, Danvers, MA 01923; phone (978) 750-8400. This consent does not extend to other kinds of copying, such as for general distribution, resale, advertising and promotional purposes, or for creating new collective works.

CHANGE OF ADDRESS: Notice should be sent to the publisher 6 weeks in advance of effective date. Include old and new addresses with zip codes. The publisher cannot accept responsibility for undelivered copies. Periodicals postage paid at Thorofare, New Jersey 08086-9447 and at additional mailing offices. POSTMASTER: Send address changes to SLACK Incorporated, 6900 Grove Road, Thorofare, NJ 08086.

INFECTION CONTROL AND HOSPITAL EPIDEMIOLOGY is listed in Index Medicus, Current Contents-Clinical Practice, Hospital Literature Index, Cumulative Index to Nursing & Allied Health Literature, Nursing Abstracts, Laboratory Performance Information Exchange System, and RNDex Top 100.

EDITORIAL OFFICE

SLACK Incorporated
6900 Grove Road
Thorofare, NJ 08086
(856) 848-1000; (856) 848-6091 (FAX)
E-mail: iche@slackinc.com

EDITOR

Barry M. Farr, MD, MSc

DEPUTY EDITORS

David P. Calfee, MD, MS

William R. Jarvis, MD

SENIOR ASSOCIATE EDITORS

C. Glen Mayhall, MD

Gina Pugliese, RN, MS

William Schaffner, MD

ASSOCIATE EDITORS

Donald A. Goldmann, MD

Didier Pittet, MD, MS

Andreas Widmer, MD, MS

SECTION EDITORS**Beyond Infection Control:****The New Hospital Epidemiology**

Wing Hong Seto, MD

Hong Kong

Disinfection and Sterilization

William A. Rutala, PhD, MPH

Chapel Hill, North Carolina

From the Laboratory

Marcus Zervos, MD

Royal Oak, Michigan

Infections in Immunocompromised Patients

Kent Sepkowitz, MD

New York City, New York

Information Management

John A. Sellick, DO

Amherst, New York

Issues in Surgery

James T. Lee, MD, PhD

St. Paul, Minnesota

Medical News

Gina Pugliese, RN, MS

Chicago, Illinois

Martin S. Favero, PhD

Irvine, California

Practical Healthcare Epidemiology

Loreen A. Herwaldt, MD

Iowa City, Iowa

Statistics for Hospital Epidemiology

David Birnbaum, PhD, MPH

Sidney, British Columbia, Canada

Topics in Long-Term Care

Philip W. Smith, MD

Omaha, Nebraska

Topics in Occupational Medicine

David Weber, MD, MPH

Chapel Hill, North Carolina

INFECTION CONTROL AND HOSPITAL EPIDEMIOLOGY™

EDITORIAL ADVISORY BOARD

- | | |
|----------------------------------|------------------------------------|
| J. Wesley Alexander, MD | Cincinnati, Ohio |
| Miriam Alter, PhD, MD | Atlanta, Georgia |
| Hilary Babcock, MD | St. Louis, Missouri |
| Elise Beltrami, MD, MPH | Atlanta, Georgia |
| Rich Besser, MD | Atlanta, Georgia |
| Marc Bonten, MD, PhD | Utrecht, the Netherlands |
| John M. Boyce, MD | New Haven, Connecticut |
| Christian Brun-Buisson, MD | Creteil, France |
| John P. Burke, MD | Salt Lake City, Utah |
| Yehuda Carmeli, MD, MPH | Tel Aviv, Israel |
| Carol Chenoweth, MD | Ann Arbor, Michigan |
| Sara Cosgrove, MD | Baltimore, Maryland |
| Donald E. Craven, MD | Burlington, Massachusetts |
| Erika D'Agata, MD, MPH | Cambridge, Massachusetts |
| Franz Daschner, MD | Freiburg, Germany |
| Patch Dellinger, MD | Seattle, Washington |
| Charles E. Edmiston, Jr., PhD | Milwaukee, Wisconsin |
| Theodore C. Eickhoff, MD | Denver, Colorado |
| Jean Yves Fagon, MD, MPH | Paris, France |
| Mark Farrington | Cambridge, England, United Kingdom |
| Victoria J. Fraser, MD | St. Louis, Missouri |
| Richard A. Garibaldi, MD | Farmington, Connecticut |
| Petra Gastmeier, MD | Berlin, Germany |
| Dale N. Gerding, MD | Hines, Illinois |
| Stephan Harbarth, MD, MS | Geneva, Switzerland |
| Anthony Harris, MD, MPH | Baltimore, Maryland |
| David K. Henderson, MD | Bethesda, Maryland |
| Peter N.R. Heselbine, MD | San Juan, California |
| Karen Hoffmann, RN, CIC, MS | Chapel Hill, North Carolina |
| Janine Jagger, MPH, PhD | Charlottesville, Virginia |
| John Jernigan, MD, MS | Atlanta, Georgia |
| Jacob L. Kool, MD, PhD | Fort Collins, Colorado |
| Ebbing Lautenbach, MD, MPH, MSCE | Philadelphia, Pennsylvania |
| Allison McGeer, MD | Toronto, Ontario, Canada |
| John E. McGowan, Jr., MD | Atlanta, Georgia |
| Leonard Mermel, DO | Providence, Rhode Island |
| Robert R. Muder, MD | Pittsburgh, Pennsylvania |
| Carlene A. Muto, MD, MS | Pittsburgh, Pennsylvania |
| Joseph M. Mylotte, MD, CIC | Buffalo, New York |
| Lindsay Nicolle, MD | Winnipeg, Manitoba, Canada |
| Juhani Ojajarvi, MD | Helsinki, Finland |
| Michael T. Osterholm, PhD, MPH | Minneapolis, Minnesota |
| David Paterson, MD | Pittsburgh, Pennsylvania |
| Jan Evans Patterson, MD | San Antonio, Texas |
| Sindy M. Paul, MD | Yardley, Pennsylvania |
| David Pegues, MD | Los Angeles, California |
| Michael A. Pfaller, MD | Iowa City, Iowa |
| Samuel Ponce de Leon, MD, MSc | Mexico City, Mexico |
| Isaam Raad, MD | Houston, Texas |
| Jordi Rello, MD, PhD | Tarragona, Spain |
| Manfred L. Rotter, MD, DipBact | Vienna, Austria |
| Henning Ruden, MD | Berlin, Germany |
| Lisa Saiman, MD, MPH | New York, New York |
| Syed Sattar, PhD | Ottawa, Ontario, Canada |
| William E. Scheckler, MD | Madison, Wisconsin |
| Andrew E. Simor, MD | Toronto, Ontario, Canada |
| Denis Spelman, MD | Prahan, Victoria, Australia |
| Susan Springthorpe, MSc | Ottawa, Ontario, Canada |
| Jeffrey R. Starke, MD | Houston, Texas |
| Janet Stout, PhD | Pittsburgh, Pennsylvania |
| Michael L. Tapper, MD | New York, New York |
| Clyde Thornsberry, PhD | Franklin, Tennessee |
| Jerome Tokars, MD, PhD | Atlanta, Georgia |
| Timothy R. Townsend, MD | Baltimore, Maryland |
| Antoni Trilla, MD, PhD | Barcelona, Spain |
| Robert A. Weinstein, MD | Chicago, Illinois |
| Sergio B. Wey, MD | São Paulo, Brazil |

SLACK Incorporated

6900 Grove Road
Thorofare, New Jersey 08086
(856) 848-1000

**Executive Vice President**

Richard N. Roash

Vice President, Publishing Operations

John C. Carter

Editorial Director

Jennifer Kilpatrick

Executive Editor

Shirley P. Strunk, ELS

Assistant Editor

Jaime Underwood

Circulation Manager

Lester J. Robeson, CCCP

Production Director

Christine Malin

Production Coordinator

Joanne Patterson

Vice President, U.S. Advertising

Wayne McCourt

Pharmaceutical Group Sales Director

Robin Geller

Advertising Sales Representative

Michael Raftery

Advertising Sales Administrator

Theresa Ficarra

Classified/Recruitment Sales Manager

Kristy Irwin

Classified/Recruitment Sales

Kelly Bove and Stacey Goldberg

Director of Reprint Sales

John Kain

Submit Manuscripts Online



INFECTION CONTROL AND HOSPITAL EPIDEMIOLOGY is pleased to announce it is now processing manuscript submissions via **Rapid Review** – a comprehensive tool to manage manuscripts, reviewers, correspondence and workflow. Submitting manuscripts has never been easier!

Take advantage of these benefits:

- Quicker and easier manuscript submission
- Immediate acknowledgement of submissions
- Authors can check an article status online
- Password-protected site for privacy

To submit your manuscripts online, visit **RapidReview.com**

The Official Journal of The Society for Healthcare Epidemiology of America

INFECTION CONTROL AND
HOSPITAL EPIDEMIOLOGY™

The Divisions of Clinical Epidemiology and Infectious Disease at the University of Utah are recruiting an Associate Hospital Epidemiologist to join the faculty at the Assistant Professor level. In conjunction with the Hospital Epidemiologist, this individual will provide medical oversight and physician leadership in infection control, occupational health, infection-related quality improvement, and antimicrobial management at the University of Utah Hospital and Clinics. The University of Utah has state-of-the art electronic surveillance and computer decision support programs in place. Opportunities for career development in infection control informatics and epidemiologic research abound. This faculty position represents an outstanding opening for a highly qualified academic physician with experience and training in epidemiology and infection control.

Please send letter of interest and CV to:

Matthew Samore, MD
Chief of Clinical Epidemiology
UNIVERSITY OF UTAH

30 N 1900 E, AC 230A SOM, Salt Lake City, UT 84132
or email: matthew.samore@hsc.utah.edu

The University of Utah is an EEO/AA employer and encourages applications from women and minorities.

The Society for Healthcare Epidemiology of America



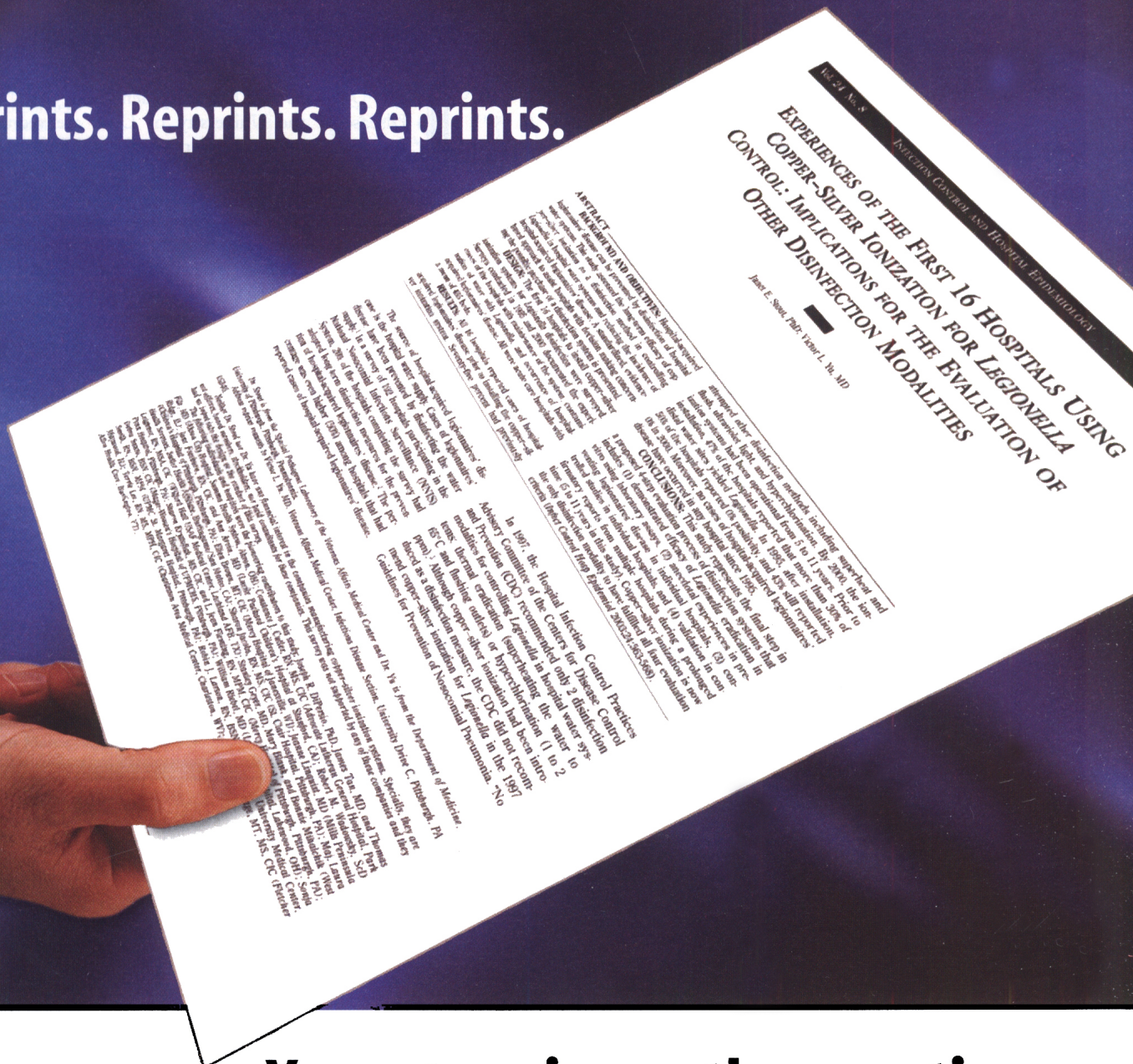
APRIL 17–20, 2004

14TH ANNUAL SCIENTIFIC MEETING

WYNDHAM FRANKLIN PLAZA HOTEL • PHILADELPHIA, PENNSYLVANIA

www.shea-online.org

Reprints. Reprints. Reprints.



Your story is worth repeating.

When your article is featured in *INFECTION CONTROL AND HOSPITAL EPIDEMIOLOGY*, don't bury it in the archives – spread the word with an *INFECTION CONTROL AND HOSPITAL EPIDEMIOLOGY* reprint. Article reprints offer an easy solution to help you distribute information to your patients and colleagues.

Call today for a FREE quote and learn how *INFECTION CONTROL AND HOSPITAL EPIDEMIOLOGY* can help you.

Our professional customized article reprints offer:*

- Quick turn-around time
- Full color or black-and-white reproduction
- 8.5" x 11" booklet bound format
- High-quality glossy stock

For a FREE quote, call John Kain, Director of Reprint Sales, at **1-800-257-8290**, ext. 238 (856-848-1000 in N.J. or outside the U.S.), e-mail: jkain@slackinc.com or visit us online at slackinc.com/reprints.

Also available electronically — call for details.