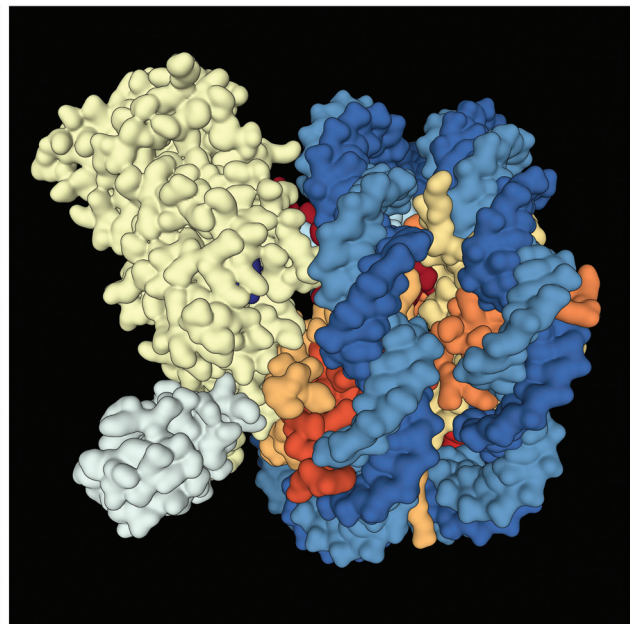
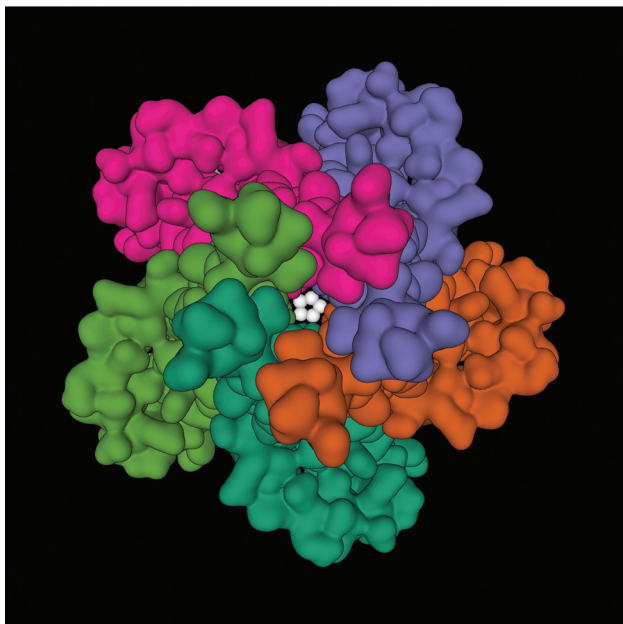
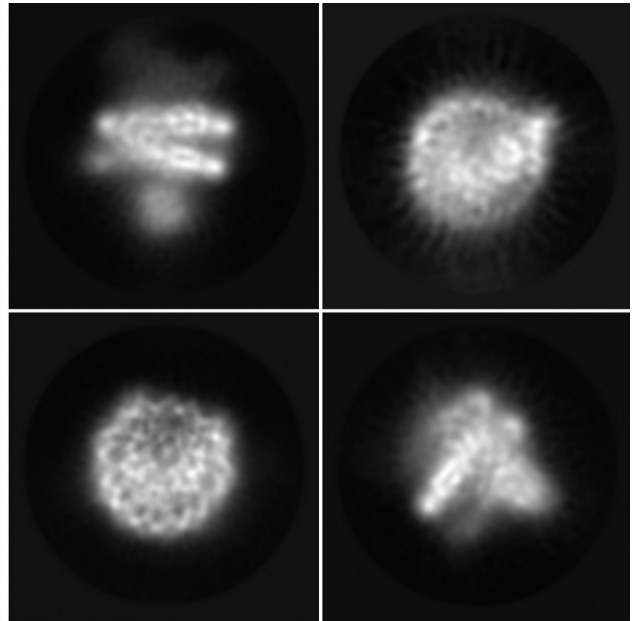


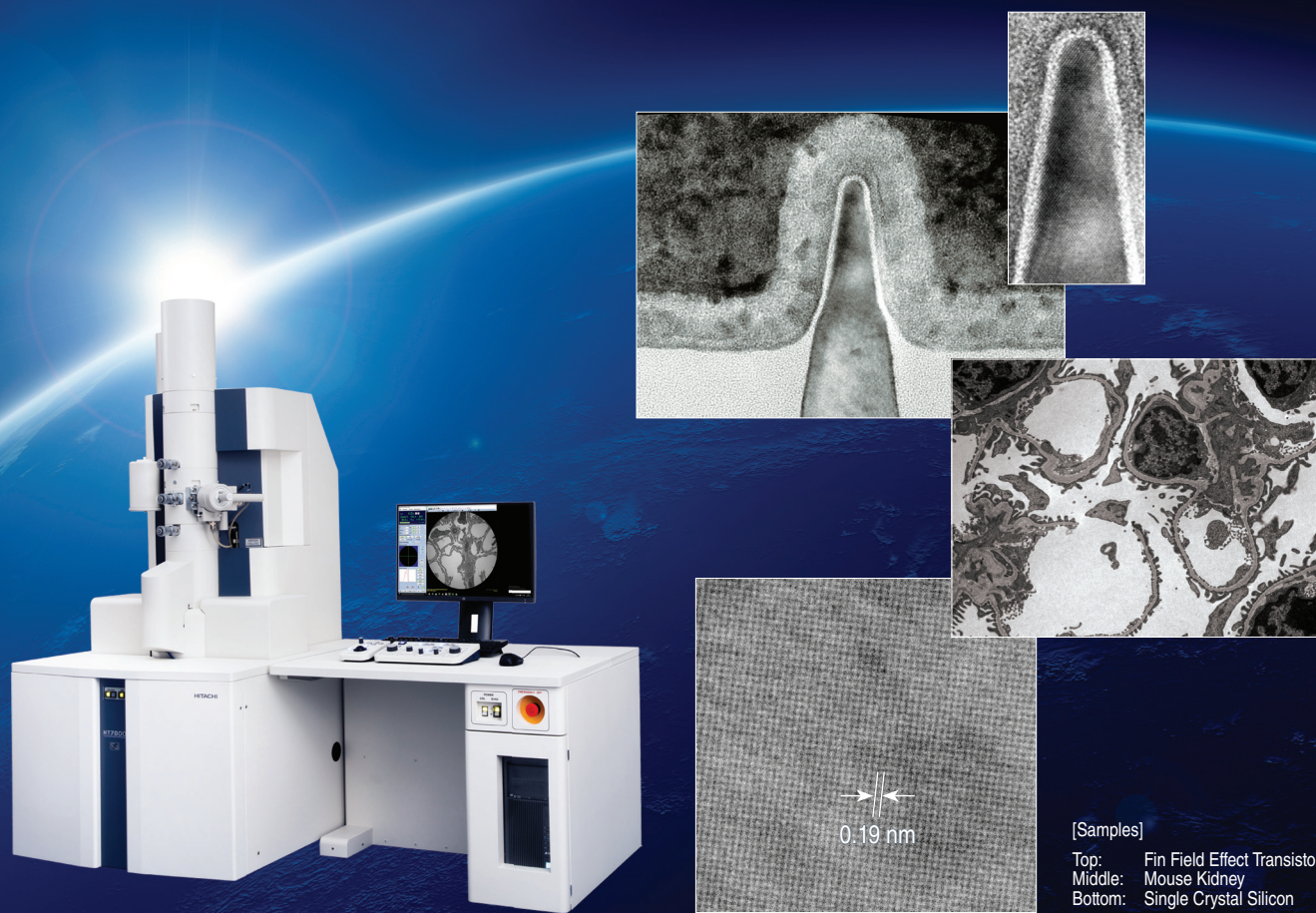
Microscopy TODAY

Volume 28 Number 3 2020 May



The NEXT Generation of 120 kV TEM

Innovation, Performance, and Reliability—The Hitachi *HT7800* Series



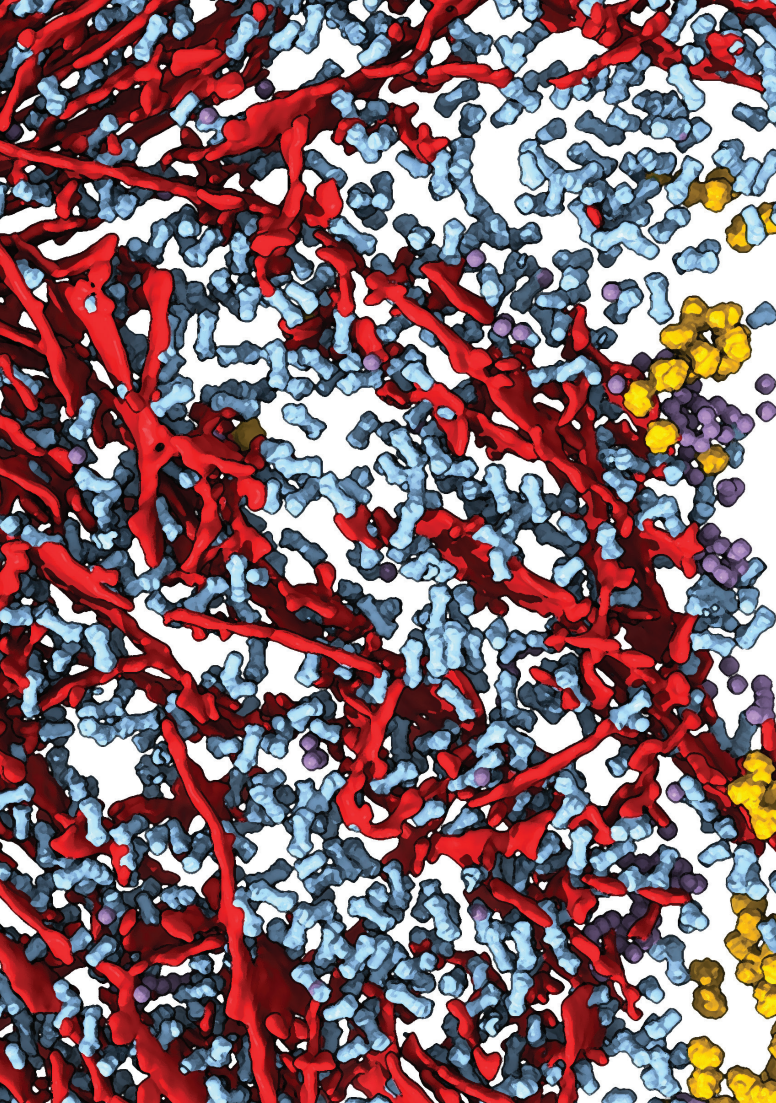
[Samples]

Top: Fin Field Effect Transistor
Middle: Mouse Kidney
Bottom: Single Crystal Silicon

Hitachi's advanced electron optics and dual-mode lens technology redefine the boundaries of 120 kV TEM performance. With ≤ 0.19 nm on-axis resolution, the highest contrast in its class, and diverse analytical capabilities for Materials Science and Life Science fields, the *HT7800* Series provides a complete solution for all your TEM imaging needs.

For more details, contact us at: microscopy@hitachi-hta.com

Innovation ♦ Synergy ♦ Solutions



M&M 2020

MICROSCOPY & MICROANALYSIS

August 2-6 • Milwaukee, WI

Visit the M&M Website for
Up-to-Date Information

www.microscopy.org/MandM/2020

'Molecular Sociology' Revealed by in situ Cryo-Electron Tomograph by
Qiang Guo, Max-Planck-Institute of Biochemistry, Germany

**MSA**
Microscopy Society of America

**MAS**
Microanalysis Society

Early Bird Savings Deadline: **July 2**



at the forefront of cryo innovation...



DIATOME Diamond Knives

DIATOME DIAMOND KNIVES FOR CRYO APPLICATIONS:

cryo 25°, 35°, 45°

Available for wet or dry sectioning.

cryo immuno

The first cryo knife with a diamond platform, guarantees the best possible sectioning for cryo-immuno-chemistry.

histo AFM

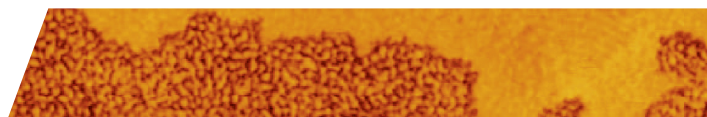
Specially tested to ensure that they meet the increased quality requirements of AFM investigation..

histo cryo

Available as boats for wet cryo sectioning, and triangular holders for dry cryo sectioning. Made of a special copper/nickel alloy, which guarantees the best heat/cold transmission.

trimtool 20, 45, and 90

One trimming tool for all of your trimming needs, be it at room or cryo temperatures.

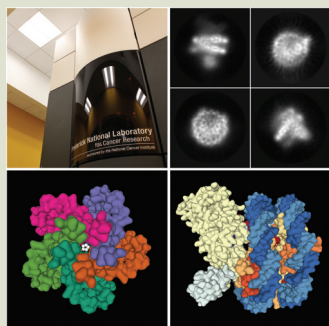


DIATOME U.S. P.O. Box 550 • 1560 Industry Rd. • Hatfield, PA 19440
Tel: (215) 412-8390 • Fax: (215) 412-8450 • email: info@emsdiasum.com or stacie@ems-secure.com

www.emsdiasum.com

Contents

About the Cover



A Titan Krios microscope at the National Cryo-EM Facility and selected results. 2D classes produced on the fly during data collection (upper right), and two recent cryo-EM structures obtained from data collected at the facility (5-HT_{3A} serotonin receptor and Dot1L nucleosome complex) are highlighted. For details, see the article by Baxa et al.

National Cryo-EM Facility

12 The National Cryo-EM Facility at Frederick National Laboratory: Operational Procedures, Methods, and Outputs

Ulrich Baxa, Thomas J. Edwards, Matt Hutchison, Adam D. Wier, Joseph Finney, Helen Wang, and Sriram Subramaniam

Light Microscopy

18 ELVIS: A Correlated Light-Field and Digital Holographic Microscope for Field and Laboratory Investigations

Taewoo Kim, Eugene Serabyn, Maximilian Schadegg, Kurt Liewer, Nathan Oborny, J. Kent Wallace, Stephanie Rider, Manuel Bedrossian, Christian Lindensmith, and Jay Nadeau

Spectroscopy

26 Optical Photothermal Infrared Microspectroscopy with Simultaneous Raman – A New Non-Contact Failure Analysis Technique for Identification of <10 μm Organic Contamination in the Hard Drive and other Electronics Industries

Mustafa Kansiz, Craig Prater, Eoghan Dillon, Michael Lo, Jay Anderson, Curtis Marcott, Abel Demissie, Yanling Chen, and Gary Kunkel

38 AFM-in-SEM as a Tool for Comprehensive Sample Surface Analysis

Veronika Novotna, Josef Horak, Martin Konecny, Veronika Hegrova, Ondrej Novotny, Zdenek Novacek, and Jan Neuman

Scanned Probe Microscopy

48 Electrical and Mechanical Characterization of Li Ion Battery Electrode using PinPoint™ SSRM

John Paul Pineda, Cathy Lee, Byong Kim, and Keibock Lee

Microscopy 101

54 Recipes for Consistent Selected Area Electron Diffraction Results: Part 2: Recording the SAED Pattern

Scott D. Walck

Pioneers of Microscopy

60 Nestor Zaluzec: Next Question, Please

Cameron Varano

Highlights from *Microscopy and Microanalysis*

66 Determination of Mass Attenuation Coefficients of Th, U, Np, and Pu for Oxygen K α X-Rays Using an Electron Microprobe

66 Confocal Analysis of Distribution and Persistence of Sindbis Virus (TaV-GFP) Infection in Midguts of *Aedes aegypti* Mosquitoes

67 Introducing and Controlling Water Vapor in Closed-Cell *In Situ* Electron Microscopy Gas Reactions

Departments

7 Editorial

8 Carmichael's Concise Review

62 Industry News

64 Product News

68 Crossword Puzzle

70 NetNotes

78 Calendar of Meetings

81 Dear Abbe

82 Index of Advertisers

your source
for cryo-SEM/
cryo FIB/SEM
preparation
equipment...

PP3010 Cryo-SEM/Cryo-FIB/SEM Preparation System

A highly automated, easy to use, column-mounted, gas-cooled cryo preparation system suitable for most makes and models of SEM, FE-SEM and FIB/SEM..

PP3004 QuickLok

Ambient temperature airlock for SEM, FIB/SEM, beamline and vacuum platforms.

PP3005 SEMCool

Non-airlock cryo cooling for SEM, FIB/SEM, beamline and vacuum platforms

PP3006 CoolLok

Cryo transfer systems for SEM, FIB/SEM, beamline and vacuum platforms

EMS has it!



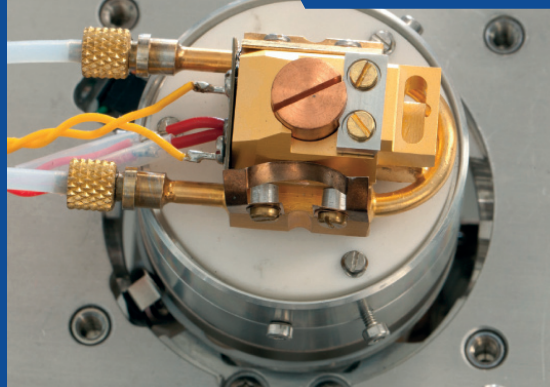
PP3010 Cryo-SEM/Cryo-FIB/SEM Preparation System



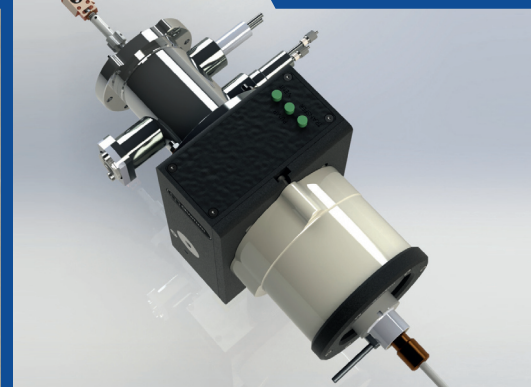
PP3004 QuickLok



PP3005 SEMCool



PP3006 CoolLok



**PLEASE CONTACT US
FOR MORE INFORMATION...**

OUR MAIN INTERACTIVE WEBSITE:

www.emsdiasum.com

**Electron
Microscopy
Sciences**

P.O. Box 550 • 1560 Industry Rd.
Hatfield, Pa 19440

Tel: (215) 412-8400 • Fax: (215) 412-8450

email: info@emsdiasum.com

or stacie@ems-secure.com

https://doi.org/10.1017/S1523200014710181 Published online by Cambridge University Press