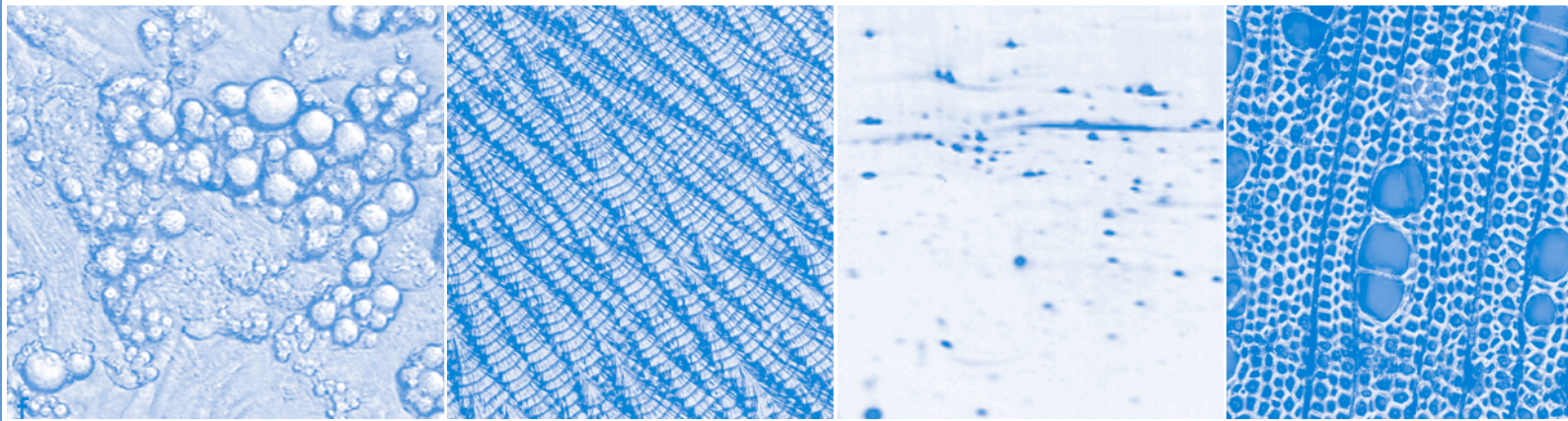


# British Journal of Nutrition

Published online by Cambridge University Press

**BJN** An International Journal of Nutritional Science

Volume 105 Number 10 28 May 2011



Published on behalf of The Nutrition Society by Cambridge University Press

ISSN 0007-1145

**Aims and Scope**

The *British Journal of Nutrition* is an international, peer-reviewed journal publishing original papers, review articles, short communications and technical notes on human and clinical nutrition, animal nutrition and basic science as applied to nutrition. Correspondence is encouraged in a Nutrition Discussion Forum. The Journal recognizes the multidisciplinary nature of nutritional science and encourages the submission of material from all of the specialities involved in research and clinical practice. The Journal also publishes supplements on topics of particular interest.

The *British Journal of Nutrition* is published twice monthly by Cambridge University Press on behalf of  
The Nutrition Society.

The *British Journal of Nutrition* is available online to subscribers at [journals.cambridge.org/bjn](http://journals.cambridge.org/bjn)  
Tables of contents and abstracts are available free at the same website.

---

**Editor-in-Chief**

P C Calder, *School of Medicine, University of Southampton, Southampton, UK*

**Deputy Editors**

F Bellisle, *INRA, University of Paris, Bobigny, France*

D R Jacobs Jr, *School of Public Health, University of Minnesota, Minneapolis, MN, USA*

R J Wallace, *Gut Health Programme, Rowett Institute of Nutrition and Health, University of Aberdeen, Aberdeen, UK*

S J Whiting, *College of Pharmacy and Nutrition, University of Saskatchewan, Saskatoon, Sask., Canada*

I S Wood, *Institute of Ageing and Chronic Disease, University of Liverpool, Liverpool, UK*

**Reviews Editors**

D J Millward, *Faculty of Health and Medical Sciences, University of Surrey, UK*

P Aggett

**Systematic Reviews Editor**

M Makrides, *Women's and Children's Health Research Institute and University of Adelaide, Adelaide, Australia*

**Supplements Editor**

J Woodside, *Nutrition and Metabolism Group, Centre for Public Health, Queen's University, Belfast, UK*

**Book Reviews Editor**

O B Kennedy, *School of Food Biosciences, University of Reading, Reading, UK*

**Editorial Board**

J J B Anderson, *Chapel Hill, NC, USA*

Y Bao, *Norwich, UK*

J H Beattie, *Aberdeen, UK*

G Bell, *Stirling, UK*

M Blaut, *Bergholz-Rehbrücke, Germany*

G C Burdge, *Southampton, UK*

A E Buyken, *Dortmund, Germany*

J Buyse, *Leuven, Belgium*

K D Cashman, *Cork, Ireland*

R S Chapkin, *College Station, TX, USA*

M S Choi, *Daegu, Korea*

A Collins, *Oslo, Norway*

S J Duthie, *Aberdeen, UK*

K Eder, *Giessen, Germany*

U Ekelund, *Cambridge, UK*

A Esmailzadeh, *Isfahan, Iran*

B A Fielding, *Oxford, UK*

J L Firkins, *Columbus, OH, USA*

J K Friel, *Winnipeg, MB, Canada*

M Fukushima, *Obihiro City, Japan*

S Garnett, *Sydney, Australia*

B A Griffin, *Surrey, UK*

J C G Halford, *Liverpool, UK*

E Herrera, *Madrid, Spain*

D J Hoffman, *New Brunswick, NJ, USA*

E J Johnson, *Boston, MA, USA*

S J Kaushik, *Saint Pée-sur-Nivelle, France*

D S Kelley, *Davis, Ca., USA*

C W C Kendall, *Toronto, Ont., Canada*

J P Lallès, *Rennes, France*

A Laviano, *Rome, Italy*

H J Lightowler, *Oxford, UK*

A M López-Sobaler, *Madrid, Spain*

J A Lovegrove, *Reading, UK*

R D Mattes, *West Lafayette, IN, USA*

C Mayer, *Aberdeen, UK*

S McCann, *Buffalo, NY, USA*

J P McClung, *Natick, MA, USA*

N M McKeown, *Boston, MA, USA*

D McMurray, *College Station, TX, USA*

J G Mercer, *Aberdeen, UK*

A M Minihane, *Norwich, UK*

T A Mori, *Perth, Australia*

M Murphy, *Reus, Spain*

P Nestel, *Southampton, UK*

U Nöthlings, *Kiel, Germany*

M C Ocké, *Bilthoven, The Netherlands*

J H Y Park, *Chuncheon, Korea*

S B Pedersen, *Lyngby, Denmark*

E Perissinotto, *Padova, Italy*

C J Petry, *Cambridge, UK*

S M Phillips, *Hamilton, Ont., Canada*

S Proctor, *Edmonton, Alta., Canada*

V Ravindran, *Palmerston North,*

*New Zealand*

W D Rees, *Aberdeen, UK*

G Rimbach, *Kiel, Germany*

S M Robinson, *Southampton, UK*

E Ros, *Barcelona, Spain*

S Salminen, *Turku, Finland*

M B Schulze, *Nuthetal, Germany*

T Sheehy, *Cork, Ireland*

A J Sinclair, *Geelong, Australia*

C R Sirtori, *Milan, Italy*

K S Swanson, *Urbana, IL, USA*

F Visioli, *Madrid, Spain*

M R Yeomans, *Sussex, UK*

**Publications Staff**

C Goodstein (*Publications Manager*), C Jackson (*Deputy Publications Manager*), L Weeks,

H Zdravics and C T Hughes (*Publications Officers*) and S Hui (*Publications Assistant*)

The Nutrition Society has as its objective the advancement of the scientific study of nutrition and its applications to the  
maintenance of human and animal health.

Application of membership is invited from anyone whose work has contributed to the scientific knowledge of nutrition, whether  
such work has been in the laboratory, the field or the clinic, and whether experimental, clinical, agricultural or statistical  
in nature. There is also a student membership scheme with reduced subscriptions.

Particulars of The Nutrition Society and application forms for membership are available from The Nutrition Society, 10 Cambridge Court,  
210 Shepherds Bush Road, London W6 7NJ, UK. Tel: +44 (0)20 7602 0228, Fax: +44 (0)20 7602 1756, Email: [office@nutsoc.org.uk](mailto:office@nutsoc.org.uk)

The Nutrition Society Home Page is at <http://www.nutritionssociety.org>

## Contents

**Invited Commentary**

- Cardiovascular effects of chronic and acute whey protein ingestion.  
*K. D. Ballard* 1415–1417

**Review Article**

- The possible role of selenium status in adverse pregnancy outcomes.  
*A. B. Mariath, D. P. Bergamaschi, P. H. C. Rondó, A. C. D'A. Tanaka,  
P. de Fragas Hinnig, J. F. Abbade & S. G. Diniz* 1418–1428

**Molecular Nutrition**

- Influence of dietary spices on the *in vivo* absorption of ingested  $\beta$ -carotene in experimental rats.  
*S. Veda & K. Srinivasan* 1429–1438
- Atheroprotective effects of dietary L-arginine increase with age in cholesterol-fed rabbits.  
*S. G. Cremers, S. J. Wolfram & P. D. Weinberg* 1439–1447

**Metabolism and Metabolic Studies**

- Effects of hydroxytyrosol-enriched sunflower oil consumption on CVD risk factors.  
*M. Vázquez-Velasco, L. E. Díaz, R. Lucas, S. Gómez-Martínez, S. Bastida, A. Marcos  
& F. J. Sánchez-Muniz* 1448–1452
- Feeding sunflower oil to partially defaunated the rumen increases nitrogen retention,  
urea-nitrogen recycling to the gastrointestinal tract and the anabolic use of recycled  
urea-nitrogen in growing lambs.  
*K. Doranalli & T. Mutsvangwa* 1453–1464
- A whey-based glutathione-enhancing diet decreases allergen-induced airway contraction  
in a guinea-pig model of asthma.  
*J. Kloek, E. Mortaz, I. Van Ark, N. Bloksma, J. Garssen, F. P. Nijkamp & G. Folkerts* 1465–1470

**Developmental Biology**

- Growth, body composition and hormonal status of growing pigs exhibiting a normal or small  
weight at birth and exposed to a neonatal diet enriched in proteins.  
*A. Morise, B. Sève, K. Macé, C. Magliola, I. Le Huërou-Luron & I. Louveau* 1471–1479

**Microbiology**

- Dietary resistant and butyrylated starches have different effects on the faecal bacterial flora of  
azoxymethane-treated rats.  
*G. C. J. Abell, C. T. Christophersen, A. L. McOrist & J. M. Clarke* 1480–1485

**Human and Clinical Nutrition**

- Natural evolution of weight status in Duchenne muscular dystrophy: a retrospective audit.  
*L. Martigne, J. Salleron, M. Mayer, J.-M. Cuisset, A. Carpentier, V. Neve, V. Tiffreau,  
D. Guimber & F. Gottrand* 1486–1491
- A whole-grain cereal-rich diet increases plasma betaine, and tends to decrease total and  
LDL-cholesterol compared with a refined-grain diet in healthy subjects.  
*A. B. Ross, S. J. Bruce, A. Blondel-Lubrano, S. Oguey-Araymon, M. Beaumont,  
A. Bourgeois, C. Nielsen-Moennoz, M. Vigo, L.-B. Fay, S. Kochhar, R. Bibiloni,  
A.-C. Pittet, S. Emady-Azar, D. Grathwohl & S. Rezzi* 1492–1502
- Current guidelines for nut consumption are achievable and sustainable: a hazelnut intervention.  
*S. L. Tey, R. Brown, A. Chisholm, A. Gray, S. Williams & C. Delahunty* 1503–1511
- Acute effects of whey protein isolate on blood pressure, vascular function and inflammatory  
markers in overweight postmenopausal women.  
*S. Pal & V. Ellis* 1512–1519

**Dietary Surveys and Nutritional Epidemiology**

- Major dietary patterns and their associations with cardiovascular risk factors among women  
in West Bengal, India.  
*D. Ganguli, N. Das, I. Saha, P. Biswas, S. Datta, B. Mukhopadhyay, D. Chaudhuri,  
S. Ghosh & S. Dey* 1520–1529
- Relative validity of fruit and vegetable intake estimated from an FFQ, using carotenoid and  
flavonoid biomarkers and the method of triads.  
*M. H. Carlsen, A. Carlsen, I. T. L. Lillegaard, J. M. Gran, C. A. Drevon, R. Blomhoff  
& L. F. Andersen* 1530–1538

The association of diabetes and BMI among Melanesian and Indian Fijians aged $\geq 40$ years. <i>G. Brian, J. Ramke, A. Page, L. Maher, J. Szetu &amp; M. Q. Qoqonokana</i>	1539–1545
Chromium and iron content in duplicate meals at a university residence: daily intake and dialysability. <i>C. Cabrera-Vique &amp; M. Mesías</i>	1546–1552
<b><i>Behaviour, Appetite and Obesity</i></b>	
An open study of the effectiveness of a multi-component weight-loss intervention for adults with intellectual disabilities and obesity. <i>C. A. Melville, S. Boyle, S. Miller, S. Macmillan, V. Penpraze, C. Pert, D. Spanos, L. Matthews, N. Robinson, H. Murray &amp; C. R. Hankey</i>	1553–1562