

A reassessment of the extinction risk of the Critically Endangered Oxapampa poison frog *Ameerega planipaleae* (Dendrobatidae)

ARIADNE ANGULO, RUDOLF VON MAY and JAVIER ICOCHEA

Abstract Assessments of extinction risk are required to inform conservation action, but the usefulness of assessments is undermined if they are not current. *Ameerega planipaleae*, a poison frog endemic to the cloud forests of central Peru, was last assessed in 2004. We therefore sought to provide updated data to inform the reassessment of this species. Based on our findings, we recommend that this frog remain categorized as Critically Endangered, but under modified criteria, and that conservation actions are taken to reduce the pressures of local threats, especially the overuse of agrochemicals.

Keywords *Ameerega planipaleae*, cloud forest, conservation actions, Critically Endangered, *Epipedobates*, habitat loss, Oxapampa poison frog, Peru

The identification of species at high risk of extinction is fundamental for conservation of biodiversity (Collen et al., 2016). The IUCN Red List Categories and Criteria (2012) were developed for objective and quantitative assessment of the extinction risk of species. Application of these criteria for the IUCN Red List of Threatened Species and for national assessments is used to inform conservation planning, monitoring and management (Hoffmann et al., 2010). For this, however, it is imperative that species are reassessed regularly, at least every 10 years (The Rules of Procedure for IUCN Red List Assessments 2017–2020; IUCN, 2016).

Ameerega planipaleae, a frog of the family Dendrobatidae, was originally described as *Epipedobates planipaleae* by Morales & Velazco (1998), who indicated that the species was known only from its type locality, in the Llamaquizú River Basin, on the western slope of Yanachaga–Chemillén National Park, Oxapampa province, Pasco region, Peru. Although subsequent studies have recorded the species at its type locality (Medina-Müller & Chávez, 2008; Chávez et al., 2012), the geographical coordinates provided by Morales & Velazco (1998) do not match the description of the locality, placing the species outside the Llamaquizú

River Basin. Relatively little is known about this frog's natural history (Chávez et al., 2012), although it is diurnal, mostly active in the afternoon, and can be found in the leaf litter of secondary forests (Chávez et al., 2012). Habitat loss has been a concern since the species was first described. Morales & Velazco (1998) found individuals in a swampy forest fragment, isolated by loss of surrounding habitat. The area surrounding the frog's known range comprises farms and buildings (Chávez et al., 2012). The most recent migration of people from the Andes has pushed agriculture and livestock farming onto the higher valley slopes, and cultivation of *Capsicum* (known locally as *rocoto*), in particular, has driven loss of primary forest and use of agrochemicals, and constitutes the main threat in the Yanachaga–Chemillén National Park buffer zone, especially in Chacos (Laura Contreras, 2007), where *A. planipaleae* occurs.

According to the information available at the time of its 2004 assessment, *A. planipaleae* was assessed as Critically Endangered based on criteria B1ab(iii) (Icochea et al., 2004). Previously the most recent sightings of this species were in the buffer zone of Yanachaga–Chemillén National Park, where 11 individuals were observed over multiple surveys during May 2007–April 2008, with a total sampling effort of 23 person-days (von May et al., 2008). Seven individuals were recorded by M. Medina-Müller and G. Chávez over 22 person-days of surveys during May 2007–January 2008 (Medina-Müller & Chávez, 2008), and four individuals were recorded by R. von May on 25 April 2008.

We sought to locate *A. planipaleae* and identify any threats to its survival, and combine our findings with all available published data to reassess the species' conservation status. Between April 2014 and July 2015 we conducted four surveys, for a total of 12 person-days, in the cloud forest of Yanachaga–Chemillén National Park and its buffer zone. Three of these surveys included the Llamaquizú River Basin (April/August 2014 and November/December 2014), covering both dry and rainy seasons.

Visual encounter surveys (Crump & Scott, 1994) were used, during daytime. Acoustic recordings of the species' advertisement calls were played, to entice males to respond (King, 2015), because *A. planipaleae* is difficult to locate visually and calls are a reliable way to locate males (it is the only diurnal frog species with this type of call in the area). Species presence was assessed based on both the visual encounter and auditory surveys. Coordinates of sites, recorded with a global positioning system, were used to calculate extent

ARIADNE ANGULO (Corresponding author), RUDOLF VON MAY* and JAVIER ICOCHEA
IUCN SSC Amphibian Specialist Group, 3701 Lake Shore Blvd W, P.O. Box 48586, Toronto, Ontario, M8W 1P5, Canada. E-mail aangulo@amphibians.org

*Also at: Museum of Zoology & Department of Ecology and Evolutionary Biology, University of Michigan, Ann Arbor, Michigan, USA

Received 19 January 2018. Revision requested 29 March 2018.
Accepted 13 April 2018. First published online 13 September 2018.

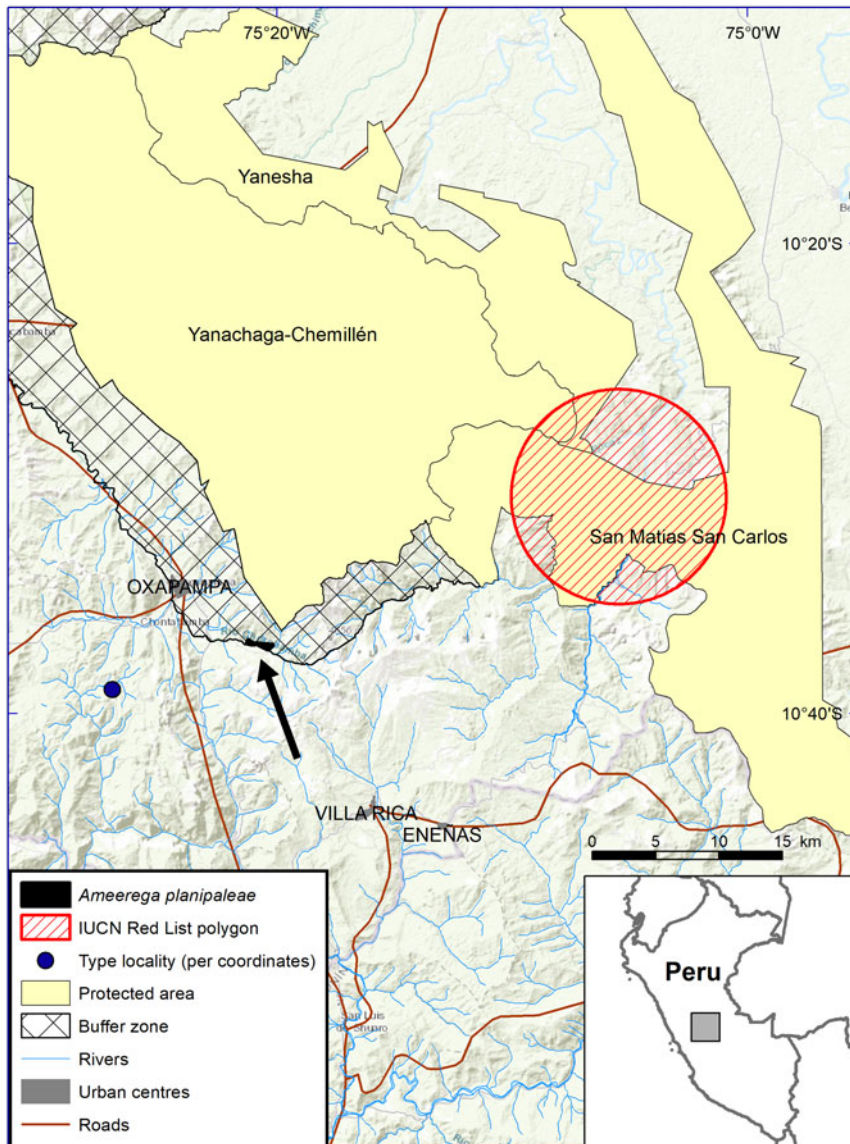


FIG. 1 The distribution of *A. planipaleae* in Peru and the current IUCN Red List polygon for the species, the known range and described type locality in the Chacos sector in the buffer zone of the Yanachaga–Chemillén National Park (indicated by the arrow), and the supposed location of the type locality in the species’ description, which does not align with the description of the type locality in the Llamaquizú River Basin.

of occurrence (EOO) and area of occupancy (AOO) (IUCN, 2012), with *GeoCAT* (Bachman et al., 2011). Our local field team also identified sites aurally.

We located *A. planipaleae* at 10 sites (one in April 2014, three in August 2014, three in November 2014 and three in July 2015) in close proximity to each other (the furthest distance between sites was 2.03 km, with a mean distance of 0.88 km) over altitudes of 1,924–2,080 m. Four of the records were visual (three adults and one juvenile) and seven (of males) were auditory. These records gave an estimated EOO of 0.542 km², in the Chacos sector of the National Park’s buffer zone. Combining these records with one published georeferenced record (Chávez et al., 2012; geographical coordinates from the species description of Morales & Velasco, 1998, and Medina-Müller & Chávez, 2008, were not used as they are believed to be erroneous) increased the known EOO to 0.740 km² and the known AOO (with a cell size of 2 km) to 8 km².

Although *A. planipaleae* has not been found in trade, and all species of the genus *Ameerega* are included in Appendix II of CITES (CITES, 2017), there is a general demand for poison frogs for the pet trade (CITES, 2018) and therefore detailed information for the 10 sites is not included here, as primary literature has been used to locate species coveted by the pet trade (Neslen, 2016). This information will, however, be made available to scientists, conservationists and government officials upon request.

All of the known sites for this species fall outside the species’ range polygon in the IUCN Red List, which is 21–23 km east–north-east of the sites we located (Fig. 1). This is probably a result of the constraints of the mapping technology available at the time of the 2004 assessment. The IUCN Red List polygon does not include the type locality coordinates provided in the species description (Morales & Velasco, 1998), which lie further west of both the polygon and the documented sites for this species.

Ameerega planipaleae occurs in an area heavily impacted by human use, and is associated with various modified habitats: secondary forests close to plantations of pines, small streams and ditches, an inactive fish farm, and small-holdings with *Capsicum* and *Passiflora* crops that are heavily sprayed with agrochemicals such as Herbosato and Paraquat (the latter is based on information provided by a local farmer, a field team member who has knowledge of local agricultural practices, and discarded agrochemical waste that we found). Laura Contreras (2007) also noted the pervasiveness of *Capsicum* crops and associated agrochemical use in this area. The level of agrochemical use in the province is such that an agrochemical waste recycling project is being implemented (SPDA, 2018).

Ameerega planipaleae, like other species of *Ameerega*, has aquatic larvae, and the adults found were all in close proximity to running water, which often receives agrochemical runoff. To date, there are no records of the species within Yanachaga–Chemillén National Park, in spite of efforts by Park staff to locate the frog within the Park boundary closest to the Chacos buffer zone sector to the south of the Park.

Based on published information and our data, we make the following extinction risk assessment for *A. planipaleae*: (1) The species has an estimated EOO of 0.740 km², adjusted to 8 km² (as EOO should not exceed AOO; IUCN Standards and Petitions Subcommittee, 2016), which is within the threshold for Critically Endangered (100 km²) under criterion B1. (2) The species has an estimated AOO of 8 km², which is within the threshold for Critically Endangered (10 km²) under criterion B2. (3) The ubiquitous use of agrochemicals throughout much of the species' restricted range and the species' obligatory association with water merit considering it a single threat-defined location. (4) There is ongoing decline of the terrestrial and aquatic habitats of the species as a result of heavy and continued use of agrochemicals, loss of forest to agriculture, and afforestation with commercial tree species.

We therefore propose that *A. planipaleae* remain categorized as Critically Endangered but based on criteria B1ab(iii) + 2ab(iii) rather than B1ab(iii). Given the species' restricted range and the ongoing threats, conservationists need to work with the local community to reduce the use of agrochemicals and explore more benign options to control crop pests, and to investigate the use of native species as commercially viable options for timber plantations. Raising awareness of these issues is also important, as is the continued monitoring of the status of *A. planipaleae*.

Acknowledgements We thank the staff of Yanachaga–Chemillén National Park for their support, in particular park directors Genaro Yarupaitán and Salomé Antezano. Werner Loechele transported the team to field sites and Dante López and Edgar Curi provided field support in Chacos. The Servicio Nacional Forestal y de Fauna Silvestre

(SERFOR, Resolución Directoral No. 0288–2014–MINAGRI–DGFFS/DGEFFS and Resolución de Dirección General No. 105–2014–SERFOR–DGGSPFFS) and the Servicio Nacional de Áreas Naturales Protegidas por el Estado (SERNANP, Resolución Jefatural No. 004–2014–SERNANP–DGANP–JEF) issued research permits for field work outside and within protected areas, respectively. This study was supported by Mohamed bin Zayed Species Conservation Fund Project No. 13257928 and Global Wildlife Conservation. The Department of Herpetology at the Museo de Historia Natural de San Marcos houses specimens collected. IUCN facilitated use of geographical information system data and software. RvM thanks the National Geographic Society (Grant # 9191–12) for support. This is publication 6 of Peru's Amphibian Specialist Group.

Author contributions All authors designed the project, conducted fieldwork and wrote the article.

Conflicts of interest None.

Ethical standards This research complies with the journal's Code of Conduct for authors.

References

- BACHMAN, S., MOAT, J., HILL, A.W., DE LA TORRE, J. & SCOTT, B. (2011) Supporting Red List threat assessments with GeoCAT: geospatial conservation assessment tool. *ZooKeys*, 150, 117–126.
- CHÁVEZ, G., COSMÓPOLIS, C.H. & LUJÁN, L. (2012) Annotated checklist and ecological notes of anurans from the southern region of Yanachaga Chemillén National Park, central Andes of Peru. *Herpetotropicos*, 8, 23–38.
- CITES (2017) *Appendices I, II and III, Valid from 4 October 2017*. <https://cites.org/eng/app/appendices.php> [accessed 18 January 2018].
- CITES (2018) *CITES Trade Database*. <https://trade.cites.org/> [accessed 18 January 2018].
- COLLEN, B., DULVY, N.K., GASTON, K.J., GÄRDENFORS, U., KEITH, D. A., PUNT, A.E. et al. (2016) Clarifying misconceptions of extinction risk assessment with the IUCN Red List. *Biology Letters*, 12, 20150843.
- CRUMP, M.L. & SCOTT, N.J. (1994) Visual encounter surveys. In *Measuring and Monitoring Biological Diversity. Standard Methods for Amphibians* (eds W.R. Heyer, M.A. Donnelly, R.W. McDiarmid, L.A. Hayek & M.S. Foster), pp. 84–92. Smithsonian Institution Press, Washington, DC, USA.
- HOFFMANN, M., HILTON-TAYLOR, C., ANGULO, A., BÖHM, M., BROOKS, T.M., BUTCHART, S.H.M. et al. (2010) The impact of conservation on the status of the world's vertebrates. *Science*, 330, 1503–1509.
- ICOCHEA, J., LEHR, E., JUNGFER, K.-H. & LÖTTERS, S. (2004) *Ameerega planipaleae*. In *The IUCN Red List of Threatened Species 2004:e.T29432A9496764*. <http://dx.doi.org/10.2305/IUCN.UK.2004.RLTS.T29432A9496764.en> [accessed 23 May 2016].
- IUCN (2012) *IUCN Red List Categories and Criteria: Version 3.1*. 2nd edition. IUCN, Gland, Switzerland, and Cambridge, UK.
- IUCN (2016) *Rules of Procedure for IUCN Red List Assessments 2017–2020. Version 3.0. Approved by the IUCN SSC Steering Committee in September 2016*. http://cmsdocs.s3.amazonaws.com/keydocuments/Rules_of_Procedure_for_Red_List_2017-2020.pdf [accessed 18 January 2018].
- IUCN STANDARDS & PETITIONS SUBCOMMITTEE (2016) *Guidelines for using the IUCN Red List Categories and Criteria. Version 12*. <http://www.iucnredlist.org/documents/RedListGuidelines.pdf> [accessed 18 January 2018].

- KING, S.L. (2015) You talkin' to me? Interactive playback is a powerful yet underused tool in animal communication research. *Biology Letters*, 11, 20150403.
- LAURA CONTRERAS, C.R. (2007) *Campaña de educación para la conservación de los bosques – Parque Nacional Yanachaga Chemillén. Informe Final*. [Http://www.portalces.org/sites/default/files/yanachagua_chemillen.pdf](http://www.portalces.org/sites/default/files/yanachagua_chemillen.pdf) [accessed 18 January 2018].
- MEDINA-MÜLLER, M. & CHÁVEZ, G. (2008) *Ameerega planipaleae*: color pattern variation and its relevance to *Ameerega* taxonomy (Amphibia: Dendrobatidae). *Herpetotropicos*, 4, 64–65.
- MORALES, V.R. & VELAZCO, P.M. (1998) Una nueva especie de *Epipedobates* (Amphibia, Anura, Dendrobatidae) de Perú. *Amphibia–Reptilia*, 19, 369–376.
- NESLEN, A. (2016) *Researchers alter wildlife papers after poachers use location data to target new species*. [Https://www.rawstory.com/2016/01/researchers-alter-wildlife-papers-after-poachers-use-location-data-to-target-new-species/](https://www.rawstory.com/2016/01/researchers-alter-wildlife-papers-after-poachers-use-location-data-to-target-new-species/) [accessed 18 January 2018].
- SPDA (SOCIEDAD PERUANA DE DERECHO AMBIENTAL) (2018) *Oxapampa: Agricultores aprenderán a reciclar envases de agroquímicos*. [Http://www.actualidadambiental.pe/?p=48814](http://www.actualidadambiental.pe/?p=48814) [accessed 24 March 2018].
- VON MAY, R., CATENAZZI, A., ANGULO, A., BROWN, J. L., CARRILLO, J., CHÁVEZ, G. et al. (2008) Current state of conservation knowledge on threatened amphibian species in Peru. *Tropical Conservation Science*, 1, 376–396.